

RECORD OF SURVEY FOR:  
ROSEBURG RESOURCES CO.  
ALL QUARTERS, SECTION 2,  
T. 20 S., R 9 W., WILLAMETTE MERIDIAN  
DOUGLAS COUNTY, OREGON  
13 NOVEMBER 2025

FILED  
DATE: 12-2-2025 BY: BS  
THIS SURVEY CONSISTS OF:  
MAP: M186-49  
NARRATIVE:  
CORNER RPT:  
DOUGLAS COUNTY  
SURVEYOR

NARRATIVE:

THE PURPOSE OF THIS SURVEY WAS TO SUBDIVIDE SECTION 2, TOWNSHIP 20 SOUTH, RANGE 9 WEST OF THE WILLAMETTE MERIDIAN, MONUMENT THE WEST 1/16 CORNER BETWEEN SECTIONS 2 & 11, AND THE SOUTHWEST 1/16 CORNER, AND MARK TRUE LINE AS SHOWN.

A CONTROL TRAVERSE WAS RUN TO TIE EXISTING CORNERS FOR THE SUBDIVISION OF SECTION 2 AND CALCULATING THE POSITION OF THE SOUTHWEST 1/16 CORNER AND THE WEST 1/16 CORNER ON THE SOUTH LINE OF SECTION 2. THE NORTH 1/4 CORNER OF SECTION 2 WAS FOUND LYING HORIZONTAL AND OUT OF POSITION WITH NO REMAINING ACCESSORIES. THE 1953 BLM MONUMENT WAS RE-SET AT RECORD BEARING AND DISTANCE FROM THE SOUTH 1/4 CORNER OF SECTION 35.

THE POSITION FOR THE SOUTHWEST 1/16 CORNER FALLS UNDER AN OLD GROWTH ROOTWAD. A 5/8" X 30" REBAR WITH A YPC MARKED LS 1091 WAS SET ON LINE 30' FROM THE CALCULATED POSITION AS SHOWN IN DETAIL "A" WITH GALVANIZED STEEL POST SET ALONGSIDE.

THE BASIS OF BEARING FOR THIS SURVEY WAS THE BUREAU OF LAND MANAGERMENTS DEPENDENT RESURVEY OF TOWNSHIP 20 SOUTH, RANGE 9 WEST, WILLAMETTE MERIDIAN, APPROVED 3-23-1960.

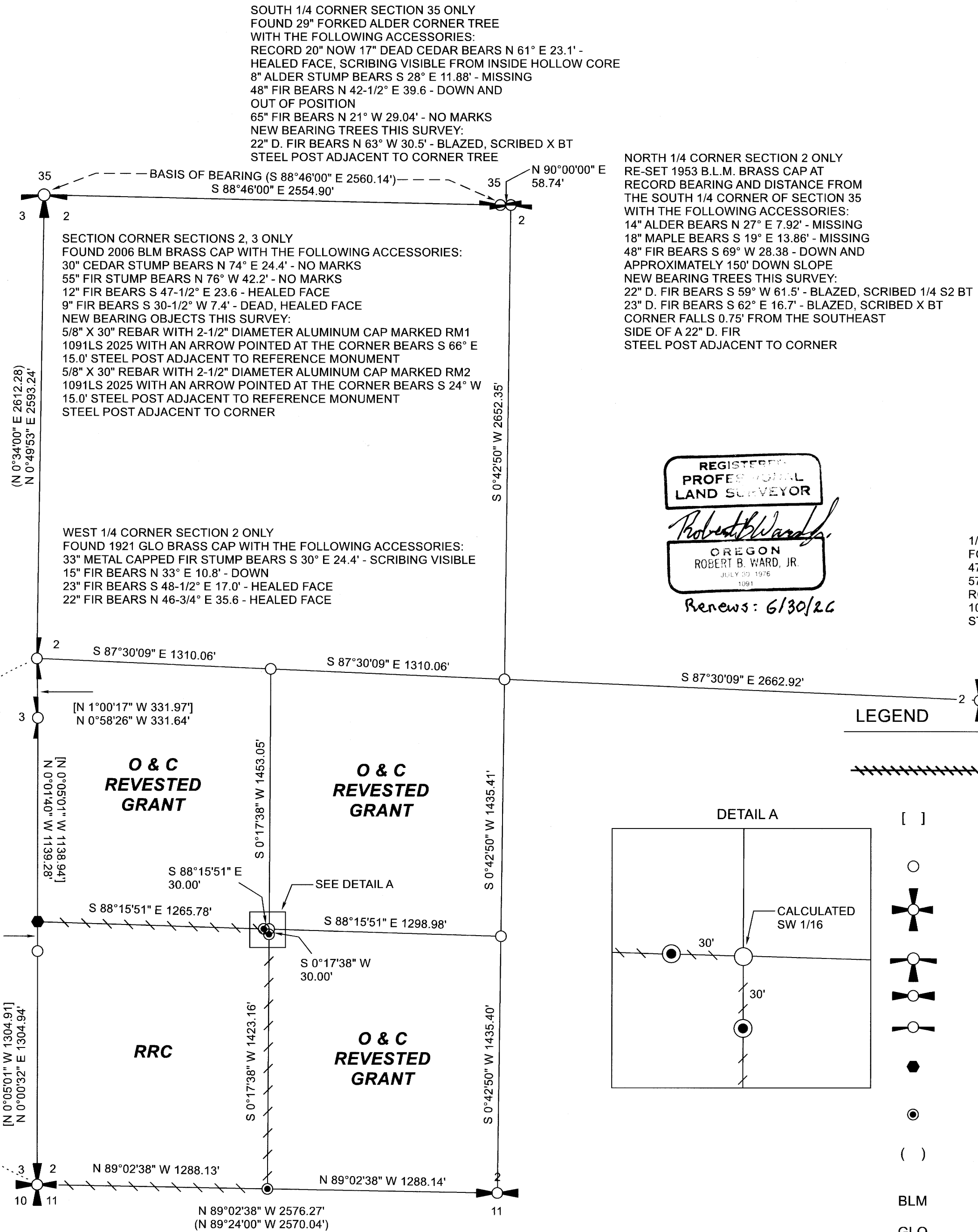
THIS SURVEY WAS PERFORMED USING A NIKON N2 TOTAL STATION AND TRIMBLE R10 RTK GPS.

BEARINGS TO BEARING TREES ADDED ARE BASED ON A SILVA RANGER HAND COMPASS WITH A DECLINATION OF 14.5° EAST AND DISTANCES ARE MEASURED HORIZONTALLY WITH A STEEL TAPE TO AN ALUMINUM NAIL AT SIDE CENTER. BEARINGS AND DISTANCES FOR ANY MONUMENTS SET ARE BASED ON SURVEY MEASURE.

EAST 1/4 CORNER SECTION 3 ONLY  
FOUND 1921 GLO BRASS CAP WITH THE FOLLOWING ACCESSORIES:  
41" METAL CAPPED FIR STUMP BEARS S 86° W 23.8' - HEALED FACE  
38" METAL CAPPED FIR STUMP BEARS N 37° W 58.1' - NO MARKS  
22" FIR BEARS S 73° W 15.4' - HEALED FACE  
23" FIR BEARS N 39-1/2° W 4.2' - HEALED FACE

SOUTH 1/16 CORNER SECTION 2 ONLY  
FOUND 2016 BLM ALUMINUM CAP WITH THE FOLLOWING ACCESSORIES:  
12" ALDER BEARS N 70° E 35.9' - SCRIBING VISIBLE  
24" HEMLOCK BEARS S 11-1/2° E 62.2' - SCRIBING VISIBLE  
ALUMINUM POST ADJACENT TO CORNER

SECTION CORNER SECTIONS 2, 3, 10, 11  
FOUND 1921 GLO BRASS CAP WITH THE FOLLOWING ACCESSORIES:  
5" CHINQUAPIN BEARS N 78° E 12.8' - BARK SCRIBING VISIBLE  
15" FIR BEARS S 2-1/2° E 21.9' - HEALED FACE  
21" FIR BEARS S 53° W 3.4' - HEALED FACE  
9" FIR BEARS N 23° W 5.5' - HEALED FACE  
2" CONCRETE FILLED IRON PIPE ALONGSIDE 1921 GLO CORNER MONUMENT  
STEEL POST ADJACENT TO CORNER



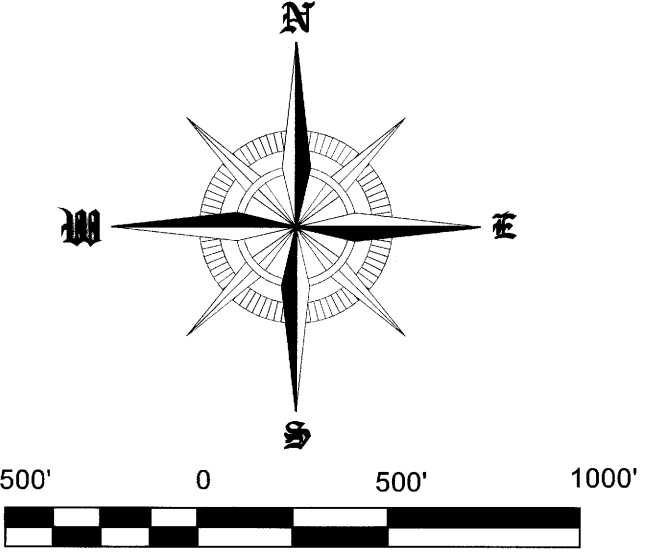
NORTH 1/4 CORNER SECTION 2 ONLY  
RE-SET 1953 B.L.M. BRASS CAP AT RECORD BEARING AND DISTANCE FROM THE SOUTH 1/4 CORNER OF SECTION 35 WITH THE FOLLOWING ACCESSORIES:  
14" ALDER BEARS N 27° E 7.92' - MISSING  
18" MAPLE BEARS S 19° E 13.86' - MISSING  
48" FIR BEARS S 69° W 28.38' - DOWN AND APPROXIMATELY 150' DOWN SLOPE  
NEW BEARING TREES THIS SURVEY:  
22" D. FIR BEARS S 59° W 61.5' - BLAZED, SCRIBED 1/4 S2 BT  
23" D. FIR BEARS S 62° E 16.7' - BLAZED, SCRIBED X BT  
CORNER FALLS 0.75' FROM THE SOUTHEAST SIDE OF A 22" D. FIR  
STEEL POST ADJACENT TO CORNER

SECTION CORNER SECTIONS 2, 3 ONLY  
FOUND 2006 BLM BRASS CAP WITH THE FOLLOWING ACCESSORIES:  
30" CEDAR STUMP BEARS N 74° E 24.4' - NO MARKS  
55" FIR STUMP BEARS N 76° W 42.2' - NO MARKS  
12" FIR BEARS S 47-1/2° E 23.6' - HEALED FACE  
9" FIR BEARS S 30-1/2° W 7.4' - DEAD, HEALED FACE  
NEW BEARING OBJECTS THIS SURVEY:  
5/8" X 30" REBAR WITH 2-1/2" DIAMETER ALUMINUM CAP MARKED RM1  
1091LS 2025 WITH AN ARROW POINTED AT THE CORNER BEARS S 66° E  
15.0' STEEL POST ADJACENT TO REFERENCE MONUMENT  
5/8" X 30" REBAR WITH 2-1/2" DIAMETER ALUMINUM CAP MARKED RM2  
1091LS 2025 WITH AN ARROW POINTED AT THE CORNER BEARS S 24° W  
15.0' STEEL POST ADJACENT TO REFERENCE MONUMENT  
STEEL POST ADJACENT TO CORNER

WEST 1/4 CORNER SECTION 2 ONLY  
FOUND 1921 GLO BRASS CAP WITH THE FOLLOWING ACCESSORIES:  
33" METAL CAPPED FIR STUMP BEARS S 30° E 24.4' - SCRIBING VISIBLE  
15" FIR BEARS N 33° E 10.8' - DOWN  
23" FIR BEARS S 48-1/2° E 17.0' - HEALED FACE  
22" FIR BEARS N 46-3/4° E 35.6' - HEALED FACE

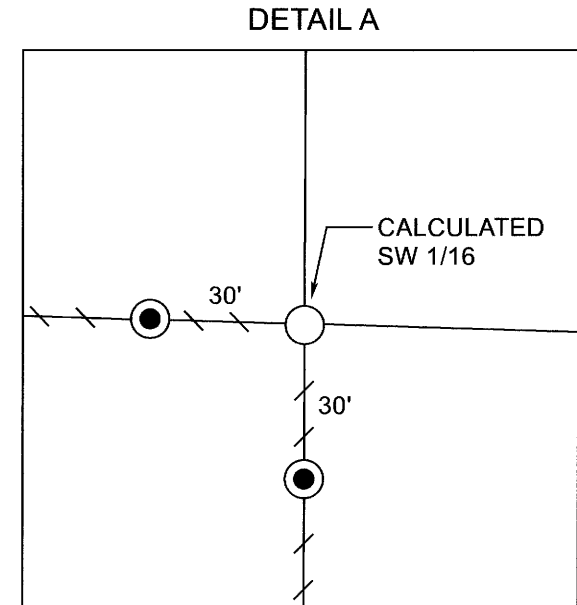
1/4 CORNER SECTIONS 1, 2  
FOUND 1953 GLO BRASS CAP WITH THE FOLLOWING ACCESSORIES:  
47" D. FIR BEARS S 61° E 19.8' - BARK SCRIBE VISIBLE  
57" D. FIR BEARS S 20-1/2° E 47.5' - HEALED FACE  
ROTTED FIR STUMP BEARS N 49° W 34.3' - HEALED FACE  
10" D. FIR BEARS N 86° W 36.5' - HEALED FACE  
STEEL POST ADJACENT TO CORNER

REGISTERED  
PROFESSIONAL  
LAND SURVEYOR  
*Robert B. Ward, Jr.*  
OREGON  
ROBERT B. WARD, JR.  
JULY 29, 1976  
1991  
Renews: 6/30/26



LEGEND

- PROPERTY LINE MARKED WITH RED PAINTED BLAZES, RED FLAGGING, AND 5-1/2" GALVANIZED STEEL POSTS SET AT AN AVERAGE INTERVAL OF 200'
- RECORD DATA PER BLM DEPENDENT RESURVEY APPROVED 7-2-2018
- CALCULATED POSITION
- FOUND SECTION CORNER AS NOTED
- FOUND SECTION CORNER AS NOTED
- FOUND 1/4 CORNER AS NOTED
- FOUND 1/4 CORNER AS NOTED
- FOUND SOUTH 1/16 CORNER SECTION 2 ONLY
- SET 5/8" X 30" REBAR WITH YPC MARKED LS 1091 UNLESS OTHERWISE NOTED
- RECORD DATA PER BLM DEPENDENT RESURVEY APPROVED 3-23-1960
- BLM BUREAU OF LAND MANAGEMENT
- GLO GENERAL LAND OFFICE
- RRC ROSEBURG RESOURCES COMPANY
- YPC YELLOW PLASTIC CAP



W 1/16 CORNER SECTIONS 2, 11  
SET 5/8" X 30" REBAR WITH 2-1/2" ALUMINUM CAP MARKED AS SHOWN WITH THE FOLLOWING ACCESSORIES:  
14" D. FIR BEARS S 83° E 42.13' BLAZED, SCRIBED W 1/16 S11 BT  
18" D. FIR BEARS N 5° E 18.00' BLAZED, SCRIBED W 1/16 S2 BT  
STEEL POST APPROXIMATELY 1.0' NORTH OF CORNER

1/4 CORNER SECTIONS 2, 11  
FOUND 1953 GLO BRASS CAP WITH THE FOLLOWING ACCESSORIES:  
59" METAL CAPPED FIR STUMP BEARS N 29° E 19.1' TO A 5/8" IRON ROD IN CENTER OF STUMP WITH YPC MARKED LS 1137 - HEALED FACE  
57" METAL CAPPED FIR STUMP BEARS S 21° E 11.4' TO A 5/8" IRON ROD IN CENTER OF STUMP - HEALED FACE  
16" FIR BEARS N 25° E 10.6' - HEALED FACE  
9" FIR BEARS S 5° W 3.9' - HEALED FACE  
ALUMINUM POST ADJACENT TO CORNER

FILE NAME		
25-105 1.TRV		
SCALE	DATE	DRAWN BY
500 Ft/In	11-13-2025	CAK
JOB	REVISION	SHEET
25-105	1/1	1/1

This map drawn with TRAVERSE PC, Software

TAX MAP 20-09-00 TAX LOT 600

NORTHWEST Land Surveying, Inc.  
(541) 997-9201  
www.northwestlandsurveying.com  
P.O. Box 2827  
Florence, OR 97439  
Fax (541) 992-0743

MAP FILE M186-49

MAP FILE M186-49