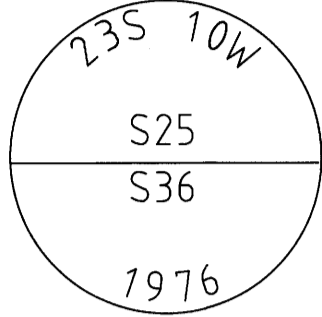


**CADASTRAL SURVEY LOCATED THE NE 1/4 OF SECTION 36, TOWNSHIP 23 SOUTH,
RANGE 10 WEST, W.M., DOUGLAS COUNTY, OREGON.**

FILED
DATE: 5/27/25 BY: KC
THIS SURVEY CONSISTS OF:
MAP: M186-3A+B
NARRATIVE: _____
CORNER RPT.: _____
DOUGLAS COUNTY SURVEYOR

NOTE 1

1/4 CORNER COMMON TO SECTIONS 25 & 36 PLSS 640200
FOUND MONUMENT:
A 2" IRON PIPE WITH BRASS CAP AS SET PER MAP FILE M62-48 MARKED AS SHOWN.
FOUND BT'S:
A 50" HEMLOCK STUMP, 4' WITH HEALED FACE BEARS S61°E 21.4' (PER CS FILE NO. 58/128). ADDED NEW TAG.
A 36" FIR, WITH HEALED FACE AND TAG, BEARS N45°W 9.1' (PER CS FILE NO. 58/128).
FOUND BO:
A STEEL FENCE POST BEARS N15°W 3.2' (ORIGIN UNKNOWN).

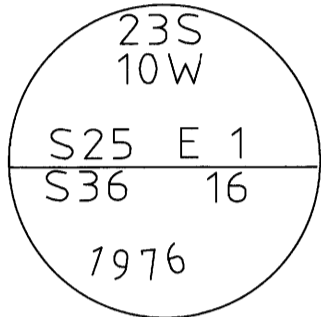


NOTE 5

NORTH-EAST 1/16 CORNER OF SECTION 36 PLSS 660160
SET MONUMENT:
A 5/8" IRON ROD WITH RED PLASTIC CAP MARKED "STYS 86454PLS".
NEW BT'S:
A 16" FIR, FACED AND SCRIBED "NE 1/16 S36 BT" WITH X-CHOP AND TAG BEARS N42°E 16.1' TO A SPIKE AT SIDE CENTER.
A 9" FIR, FACED AND SCRIBED "NE 1/16 S36 BT" WITH X-CHOP AND TAG BEARS S02°E 9.3' TO A SPIKE AT SIDE CENTER.

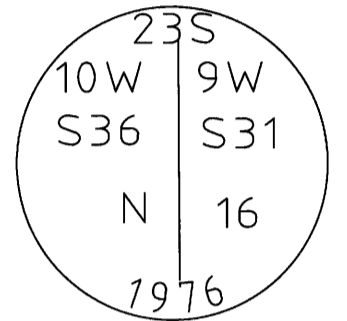
NOTE 2

EAST 1/16 CORNER COMMON TO SECTIONS 25 & 36 PLSS 660200
FOUND MONUMENT:
A 2" IRON PIPE WITH BRASS CAP AS SET PER MAP FILE M62-48 MARKED AS SHOWN. CORNER FALLS SOUTH 1.5' OF FENCE CORNER. FENCE RUNS NORTH AND WEST.
NEW BT'S:
A 13" FIR, FACED & SCRIBED "1/16 S25 BT" WITH X-CHOP AND TAG BEARS N64°E 24.3' TO A SPIKE AT SIDE CENTER.
A 13" FIR, FACED & SCRIBED "1/16 S36 BT" WITH X-CHOP AND TAG BEARS S30°E 31.9' TO A SPIKE AT SIDE CENTER.



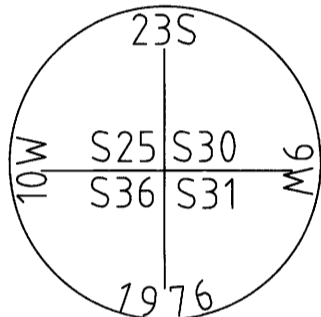
NOTE 6

NORTH 1/16 CORNER COMMON TO SECTIONS 31 & 36 PLSS 700160
RESET MONUMENT:
A 2" IRON PIPE WITH BRASS CAP AS SET PER MAP FILE M62-48 AND MARKED AS SHOWN, WAS FOUND COMPLETELY LAID OVER OUT OF THE GROUND. RECORD BT'S COULD NOT BE FOUND. WE TAKE THE ORIGINAL MONUMENT AND SET IT AT A CALCULATED MID POINT BETWEEN THE NE SECTION CORNER AND THE 1/4 CORNER TO THE SOUTH TO BEST RESTORE ITS ORIGINAL POSITION.
FOUND BO:
A 3/4" IRON PIPE, BENT AND WELL RUSTED, BEARS S4°W 14.8' (S11°W 13.5' PER CS FILE NO. 58/128).
NEW BO'S:
A STEEL POST BEARS NORTH 4.0'.
A STEEL POST BEARS WEST 4.0'.



NOTE 3

SECTION CORNER COMMON TO SECTIONS 25, 30, 31 & 36 PLSS 700200
FOUND MONUMENT:
A 2" IRON PIPE WITH BRASS CAP AS SET PER MAP FILE M62-48 MARKED AS SHOWN.
FOUND BT'S:
A 14" FIR STUMP, WITH HEALED FACE AND TAG, BEARS N35°W 11.2' (CS FILE NO. 58/128).
A 12" FIR STUMP, WITH TAG, BEARS S87°W 15.2' (CS FILE NO. 58/128).
NEW BT'S:
A 18" FIR, FACED & SCRIBED "SW S30 BT" WITH X-CHOP AND TAG BEARS N32°E 31.0' TO A SPIKE AT SIDE CENTER.
A 17" FIR, FACED & SCRIBED "SW S30 BT" WITH X-CHOP AND TAG BEARS N70°E 32.8' TO A SPIKE AT SIDE CENTER.
A 13" FIR, FACED & SCRIBED "NE S36 BT" WITH X-CHOP AND TAG BEARS S47°W 21.8' TO A SPIKE AT SIDE CENTER.
A 12" FIR, FACED & SCRIBED "SE S25 BT" WITH X-CHOP AND TAG BEARS N80°W 33.9' TO A SPIKE AT SIDE CENTER.



NOTE 7

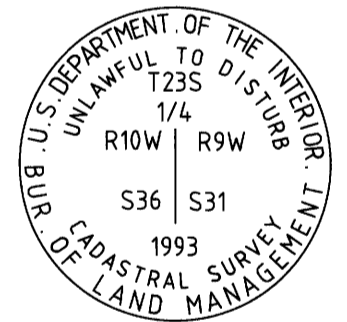
CENTER 1/4 CORNER OF SECTION 36 PLSS 640140
FOUND MONUMENT:
A 3/4" IRON PIPE AS SET PER CS FILE NO. 41/327.
NEW BT'S:
A 42" FIR, FACED & SCRIBED "1/4 S36 BT" WITH X-CHOP AND TAG BEARS S11°E 23.4' TO A SPIKE AT SIDE CENTER.
AN 11" FIR, FACED & SCRIBED "1/4 S36 BT" WITH X-CHOP AND TAG BEARS S39°W 11.4' TO A SPIKE AT SIDE CENTER.
A 24" FIR, FACED AND SCRIBED "1/4 S36 BT" WITH X-CHOP AND TAG BEARS N81°W 12.7' TO A SPIKE AT SIDE CENTER.
A 21" FIR, FACED AND SCRIBED "1/4 S36 BT" WITH X-CHOP AND TAG BEARS N07°W 18.3' TO A SPIKE AT SIDE CENTER.

NOTE 4

CENTER-NORTH 1/16 CORNER OF SECTION 36 PLSS 640160
SET MONUMENT:
A 5/8" IRON ROD WITH RED PLASTIC CAP MARKED "STYS 86454PLS".
FOUND BT:
A 33" MAPLE, WITH HEALED FACE, BEARS S87°E 167.4' (WE FIND A TREE IN THIS LOCATION WITH REMNANTS OF PAINT IN THE HEALED FACE, HOWEVER ITS CORRECT DESCRIPTION IS A MYRTLE BEARING S87°E 166.8' PER CS 65/116-4).
NEW BT:
AN 18" MYRTLE, FACED & SCRIBED "CN 1/16 S36 BT" WITH X-CHOP AND TAG BEARS S80°W 56.9' TO A SPIKE AT SIDE CENTER.
NEW BO:
A 5/8" IRON ROD WITH PLASTIC CAP MARKED 86454PLS BEARS S88°E 141.1'.

NOTE 8

1/4 CORNER COMMON TO SECTIONS 31 & 36 PLSS 700140
FOUND MONUMENT:
A 2-1/2" IRON PIPE WITH BRASS CAP AS SET PER DCSO RECORDS VOL 52 PAGE 19658 AND MARKED AS SHOWN.
FOUND BT'S:
A 42" FIR STUMP, ROTTED WITH NO VISIBLE MARKS, BEARS N19°E 30.0' (CS FILE NO. 41/327).
A 20" FIR STUMP, ROTTED WITH NO VISIBLE MARKS, BEARS EAST 12.0' (DCSO RECORDS VOL.6 P.2629).
A 36" FIR STUMP, ROTTED WITH NO VISIBLE MARKS, BEARS S02°W 12.0' (DCSO RECORDS VOL.6 P.2629).
NEW BT'S:
A 19" FIR, FACED & SCRIBED "1/4 S31 BT" WITH X-CHOP AND TAG BEARS N31°E 7.7' TO A SPIKE AT SIDE CENTER.
A 9" FIR, FACED & SCRIBED "1/4 S31 BT" WITH X-CHOP AND TAG BEARS S22°E 11.5' TO A SPIKE AT SIDE CENTER.
A 20" FIR, FACED & SCRIBED "1/4 S36 BT" WITH X-CHOP AND TAG BEARS S62°W 23.8' TO A SPIKE AT SIDE CENTER.
A 16" FIR, FACED & SCRIBED "1/4 S36 BT" WITH X-CHOP AND TAG BEARS N47°W 21.5' TO A SPIKE AT SIDE CENTER.



PO BOX 778
COOS BAY, OR 97420
541-294-6915
WWW.ESTABROOKLANDSURVEYING.COM

PREPARED FOR:
WEYERHAEUSER COMPANY
63459 OLIVE BARBER ROAD
COOS BAY, OR 97420

DRAWN BY: BAC
CHECKED BY: SRS
JOB NO.: 2025-057
DATE: 5/1/2025
SHEET: 2 OF 2

REGISTERED PROFESSIONAL LAND SURVEYOR
Stephan R. Stys
OREGON
NOVEMBER 14, 2022
STEPHAN R. STYS
86454PLS
EXPIRES 06/30/26