

CADASTRAL SURVEY LOCATED THE NE 1/4 OF SECTION 36, TOWNSHIP 23 SOUTH, RANGE 10 WEST, W.M., DOUGLAS COUNTY, OREGON.

FILED
DATE: 5/11/25 BY: KC
THIS SURVEY CONSISTS OF:
MAP: M186-3A+B
NARRATIVE:
CORNER RPT.:
DOUGLAS COUNTY SURVEYOR

NARRATIVE
THE PURPOSE OF THIS SURVEY WAS TO SET MONUMENTS AND MARK BOUNDARY LINES FOR RESOURCE MANAGEMENT.

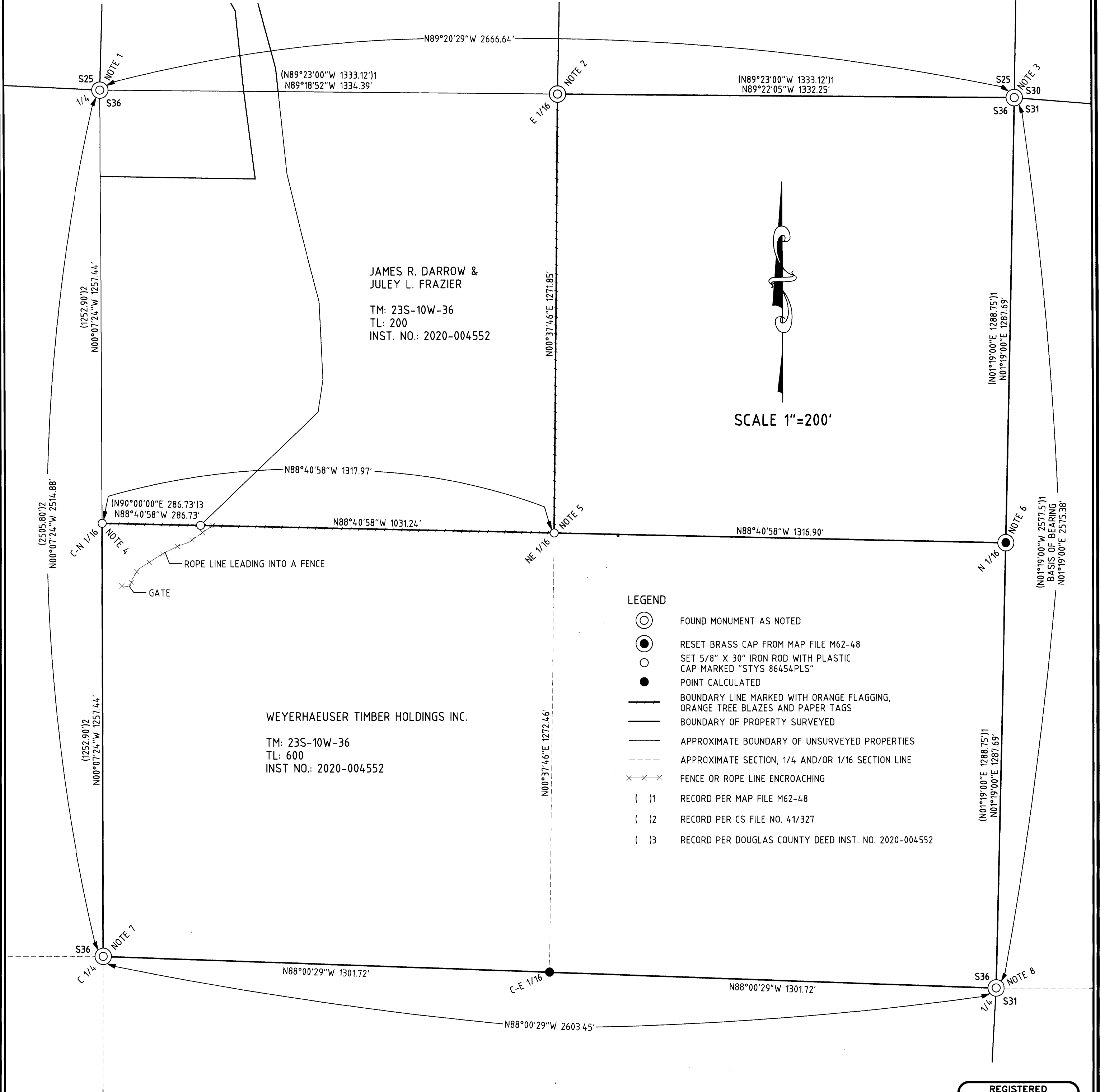
THE PROCEDURE WAS TO LOCATE AND TIE RECORD MONUMENTS PER CS FILE NO. 41/327 AND MAP FILE M62-48. THE NORTH 1/16 CORNER COMMON TO SECTIONS 31 & 36, A 2" IRON PIPE WITH BRASS CAP AS SET PER MAP FILE M62-48, WAS FOUND COMPLETELY LAID OVER AND OUT OF THE GROUND. RECORD BT'S (2 STUMPS) COULD NOT BE FOUND. WE TAKE SAID MONUMENT AND SET IT AT A CALCULATED MID-POINT BETWEEN THE NORTHEAST SECTION CORNER AND THE 1/4 CORNER TO THE SOUTH TO BEST RESTORE ITS INTENDED POSITION. WE THEN TRAVERSED BETWEEN FOUND MONUMENTS AND MARKED THE BOUNDARY WITH ORANGE FLAGGING, ORANGE TREE BLAZES AND PAPER TAGS.

EQUIPMENT USED WAS A NIKON DTM 522 K2 TOTAL STATION WITH TDS RANGER DATA COLLECTOR.

ASSISTING PERSONNEL WERE BLUE JAMES, XANDER THALHEIMER, JOHN RONDEAU AND ABIGAIL VASHAW.

BASIS OF BEARING
THE BASIS OF BEARING IS ASSUMED PER MAP FILE M62-48.

RECORD REFERENCE INFORMATION
MAP FILE M62-48, BY: MICHAEL S. MCDOWELL, DATED: DECEMBER, 1976.
CS FILE NO. 41/327, BY: THEODORE S. ELLINGSON, DATED: NOVEMBER, 1954.
DOUGLAS COUNTY DEED RECORDS INSTRUMENT NO. 2020-004552.



- LEGEND**
- FOUND MONUMENT AS NOTED
 - RESET BRASS CAP FROM MAP FILE M62-48
 - SET 5/8" X 30" IRON ROD WITH PLASTIC CAP MARKED "STYS 86454PLS"
 - POINT CALCULATED
 - BOUNDARY LINE MARKED WITH ORANGE FLAGGING, ORANGE TREE BLAZES AND PAPER TAGS
 - BOUNDARY OF PROPERTY SURVEYED
 - - - APPROXIMATE BOUNDARY OF UNSURVEYED PROPERTIES
 - - - APPROXIMATE SECTION, 1/4 AND/OR 1/16 SECTION LINE
 - x x x FENCE OR ROPE LINE ENCROACHING
 - ()1 RECORD PER MAP FILE M62-48
 - ()2 RECORD PER CS FILE NO. 41/327
 - ()3 RECORD PER DOUGLAS COUNTY DEED INST. NO. 2020-004552



PO BOX 778
COOS BAY, OR 97420
541-294-6915
WWW.ESTABROOKLANDSURVEYING.COM

PREPARED FOR:
WEYERHAEUSER COMPANY
63459 OLIVE BARBER ROAD
COOS BAY, OR 97420

DRAWN BY: BAC
CHECKED BY: SRS
JOB NO.: 2025-057
DATE: 5/1/2025
SHEET: 1 OF 2

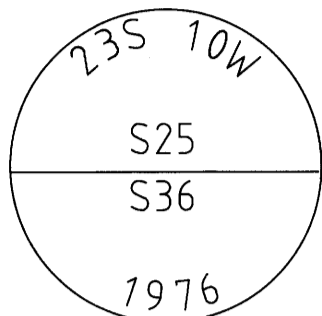
REGISTERED PROFESSIONAL LAND SURVEYOR
Stephan Stys
OREGON
NOVEMBER 8, 2022
STEPHAN R. STYS
86454PLS
EXPIRES 06/30/26

**CADASTRAL SURVEY LOCATED THE NE 1/4 OF SECTION 36, TOWNSHIP 23 SOUTH,
RANGE 10 WEST, W.M., DOUGLAS COUNTY, OREGON.**

FILED
DATE: 5/27/25 BY: KC
THIS SURVEY CONSISTS OF:
MAP: M186-3A+B
NARRATIVE: _____
CORNER RPT.: _____
DOUGLAS COUNTY SURVEYOR

NOTE 1

1/4 CORNER COMMON TO SECTIONS 25 & 36 PLSS 640200
FOUND MONUMENT:
A 2" IRON PIPE WITH BRASS CAP AS SET PER MAP FILE M62-48 MARKED AS SHOWN.
FOUND BT'S:
A 50" HEMLOCK STUMP, 4' WITH HEALED FACE BEARS S61°E 21.4' (PER CS FILE NO. 58/128). ADDED NEW TAG.
A 36" FIR, WITH HEALED FACE AND TAG, BEARS N45°W 9.1' (PER CS FILE NO. 58/128).
FOUND BO:
A STEEL FENCE POST BEARS N15°W 3.2' (ORIGIN UNKNOWN).

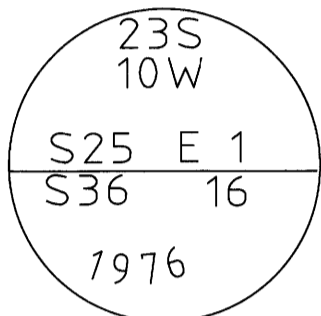


NOTE 5

NORTH-EAST 1/16 CORNER OF SECTION 36 PLSS 660160
SET MONUMENT:
A 5/8" IRON ROD WITH RED PLASTIC CAP MARKED "STYS 86454PLS".
NEW BT'S:
A 16" FIR, FACED AND SCRIBED "NE 1/16 S36 BT" WITH X-CHOP AND TAG BEARS N42°E 16.1' TO A SPIKE AT SIDE CENTER.
A 9" FIR, FACED AND SCRIBED "NE 1/16 S36 BT" WITH X-CHOP AND TAG BEARS S02°E 9.3' TO A SPIKE AT SIDE CENTER.

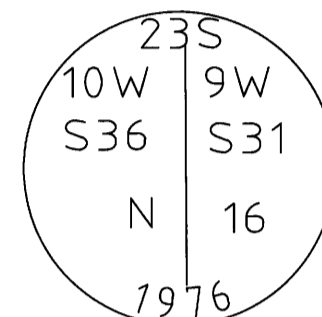
NOTE 2

EAST 1/16 CORNER COMMON TO SECTIONS 25 & 36 PLSS 660200
FOUND MONUMENT:
A 2" IRON PIPE WITH BRASS CAP AS SET PER MAP FILE M62-48 MARKED AS SHOWN. CORNER FALLS SOUTH 1.5' OF FENCE CORNER. FENCE RUNS NORTH AND WEST.
NEW BT'S:
A 13" FIR, FACED & SCRIBED "1/16 S25 BT" WITH X-CHOP AND TAG BEARS N64°E 24.3' TO A SPIKE AT SIDE CENTER.
A 13" FIR, FACED & SCRIBED "1/16 S36 BT" WITH X-CHOP AND TAG BEARS S30°E 31.9' TO A SPIKE AT SIDE CENTER.



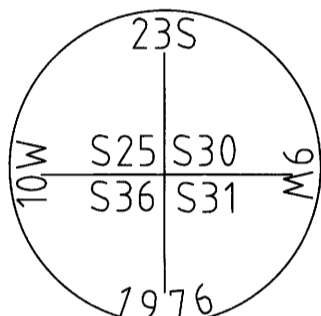
NOTE 6

NORTH 1/16 CORNER COMMON TO SECTIONS 31 & 36 PLSS 700160
RESET MONUMENT:
A 2" IRON PIPE WITH BRASS CAP AS SET PER MAP FILE M62-48 AND MARKED AS SHOWN, WAS FOUND COMPLETELY LAID OVER OUT OF THE GROUND. RECORD BT'S COULD NOT BE FOUND. WE TAKE THE ORIGINAL MONUMENT AND SET IT AT A CALCULATED MID POINT BETWEEN THE NE SECTION CORNER AND THE 1/4 CORNER TO THE SOUTH TO BEST RESTORE ITS ORIGINAL POSITION.
FOUND BO:
A 3/4" IRON PIPE, BENT AND WELL RUSTED, BEARS S4°W 14.8' (S11°W 13.5' PER CS FILE NO. 58/128).
NEW BO'S:
A STEEL POST BEARS NORTH 4.0'.
A STEEL POST BEARS WEST 4.0'.



NOTE 3

SECTION CORNER COMMON TO SECTIONS 25, 30, 31 & 36 PLSS 700200
FOUND MONUMENT:
A 2" IRON PIPE WITH BRASS CAP AS SET PER MAP FILE M62-48 MARKED AS SHOWN.
FOUND BT'S:
A 14" FIR STUMP, WITH HEALED FACE AND TAG, BEARS N35°W 11.2' (CS FILE NO. 58/128).
A 12" FIR STUMP, WITH TAG, BEARS S87°W 15.2' (CS FILE NO. 58/128).
NEW BT'S:
A 18" FIR, FACED & SCRIBED "SW S30 BT" WITH X-CHOP AND TAG BEARS N32°E 31.0' TO A SPIKE AT SIDE CENTER.
A 17" FIR, FACED & SCRIBED "SW S30 BT" WITH X-CHOP AND TAG BEARS N70°E 32.8' TO A SPIKE AT SIDE CENTER.
A 13" FIR, FACED & SCRIBED "NE S36 BT" WITH X-CHOP AND TAG BEARS S47°W 21.8' TO A SPIKE AT SIDE CENTER.
A 12" FIR, FACED & SCRIBED "SE S25 BT" WITH X-CHOP AND TAG BEARS N80°W 33.9' TO A SPIKE AT SIDE CENTER.



NOTE 7

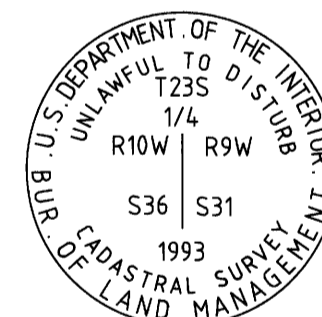
CENTER 1/4 CORNER OF SECTION 36 PLSS 640140
FOUND MONUMENT:
A 3/4" IRON PIPE AS SET PER CS FILE NO. 41/327.
NEW BT'S:
A 42" FIR, FACED & SCRIBED "1/4 S36 BT" WITH X-CHOP AND TAG BEARS S11°E 23.4' TO A SPIKE AT SIDE CENTER.
AN 11" FIR, FACED & SCRIBED "1/4 S36 BT" WITH X-CHOP AND TAG BEARS S39°W 11.4' TO A SPIKE AT SIDE CENTER.
A 24" FIR, FACED AND SCRIBED "1/4 S36 BT" WITH X-CHOP AND TAG BEARS N81°W 12.7' TO A SPIKE AT SIDE CENTER.
A 21" FIR, FACED AND SCRIBED "1/4 S36 BT" WITH X-CHOP AND TAG BEARS N07°W 18.3' TO A SPIKE AT SIDE CENTER.

NOTE 4

CENTER-NORTH 1/16 CORNER OF SECTION 36 PLSS 640160
SET MONUMENT:
A 5/8" IRON ROD WITH RED PLASTIC CAP MARKED "STYS 86454PLS".
FOUND BT:
A 33" MAPLE, WITH HEALED FACE, BEARS S87°E 167.4' (WE FIND A TREE IN THIS LOCATION WITH REMNANTS OF PAINT IN THE HEALED FACE, HOWEVER ITS CORRECT DESCRIPTION IS A MYRTLE BEARING S87°E 166.8' PER CS 65/116-4).
NEW BT:
AN 18" MYRTLE, FACED & SCRIBED "CN 1/16 S36 BT" WITH X-CHOP AND TAG BEARS S80°W 56.9' TO A SPIKE AT SIDE CENTER.
NEW BO:
A 5/8" IRON ROD WITH PLASTIC CAP MARKED 86454PLS BEARS S88°E 141.1'.

NOTE 8

1/4 CORNER COMMON TO SECTIONS 31 & 36 PLSS 700140
FOUND MONUMENT:
A 2-1/2" IRON PIPE WITH BRASS CAP AS SET PER DCSO RECORDS VOL 52 PAGE 19658 AND MARKED AS SHOWN.
FOUND BT'S:
A 42" FIR STUMP, ROTTED WITH NO VISIBLE MARKS, BEARS N19°E 30.0' (CS FILE NO. 41/327).
A 20" FIR STUMP, ROTTED WITH NO VISIBLE MARKS, BEARS EAST 12.0' (DCSO RECORDS VOL.6 P.2629).
A 36" FIR STUMP, ROTTED WITH NO VISIBLE MARKS, BEARS S02°W 12.0' (DCSO RECORDS VOL.6 P.2629).
NEW BT'S:
A 19" FIR, FACED & SCRIBED "1/4 S31 BT" WITH X-CHOP AND TAG BEARS N31°E 7.7' TO A SPIKE AT SIDE CENTER.
A 9" FIR, FACED & SCRIBED "1/4 S31 BT" WITH X-CHOP AND TAG BEARS S22°E 11.5' TO A SPIKE AT SIDE CENTER.
A 20" FIR, FACED & SCRIBED "1/4 S36 BT" WITH X-CHOP AND TAG BEARS S62°W 23.8' TO A SPIKE AT SIDE CENTER.
A 16" FIR, FACED & SCRIBED "1/4 S36 BT" WITH X-CHOP AND TAG BEARS N47°W 21.5' TO A SPIKE AT SIDE CENTER.



PO BOX 778
COOS BAY, OR 97420
541-294-6915
WWW.ESTABROOKLANDSURVEYING.COM

PREPARED FOR:
WEYERHAEUSER COMPANY
63459 OLIVE BARBER ROAD
COOS BAY, OR 97420

DRAWN BY: BAC
CHECKED BY: SRS
JOB NO.: 2025-057
DATE: 5/1/2025
SHEET: 2 OF 2

REGISTERED PROFESSIONAL LAND SURVEYOR
Stephan R. Stys
OREGON
NOVEMBER 14, 2022
STEPHAN R. STYS
86454PLS
EXPIRES 06/30/26