

FILED  
 Date: 8-25-2025 By: [Signature]  
 This survey consists of:  
 Map: M186-27  
 Narrative:  
 Corner Rept.:  
 DOUGLAS COUNTY  
 SURVEYOR

MAP FILE M186-27



**LEGEND**

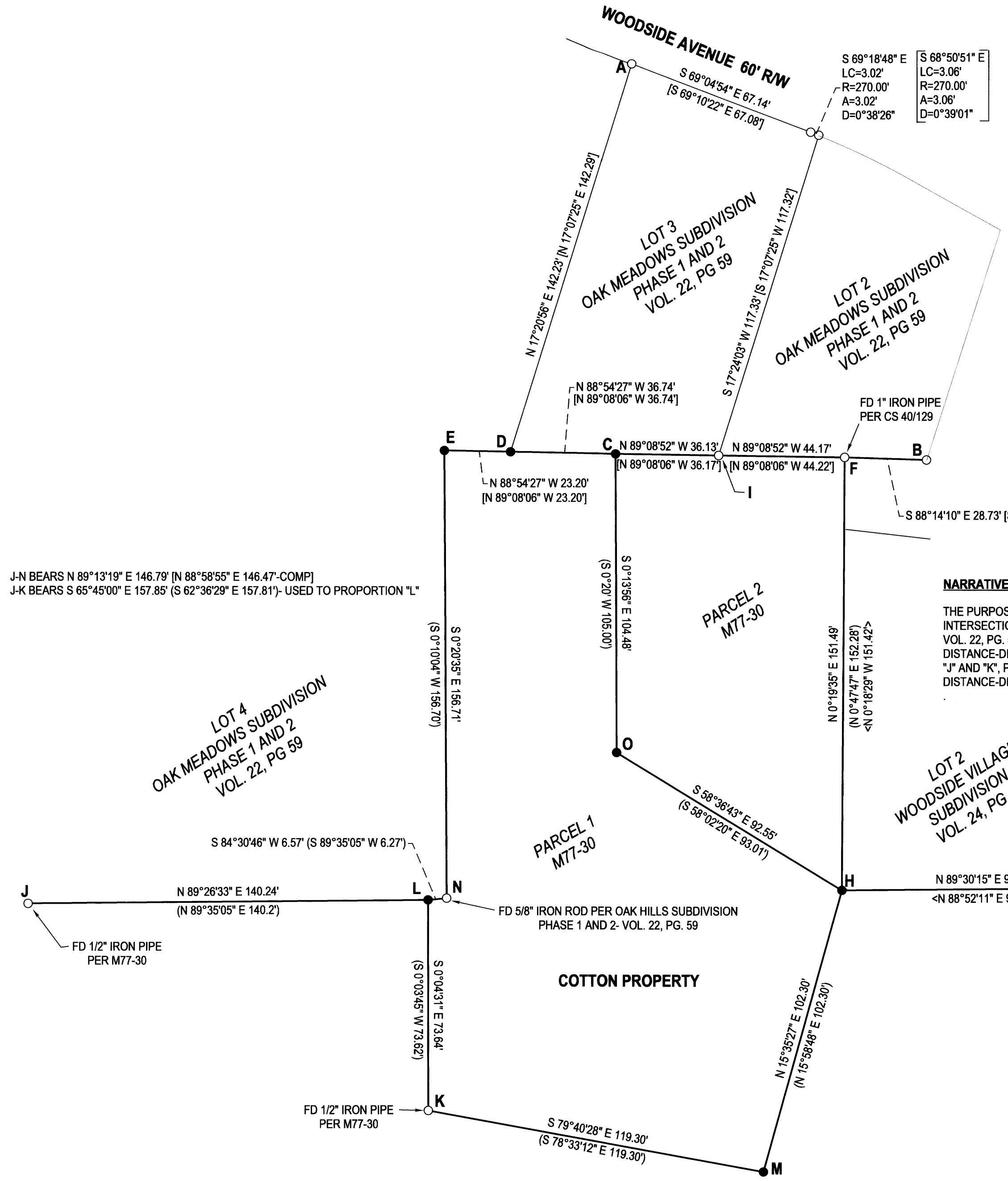
- FOUND 5/8" IRON ROD PER VOL. 22, PG. 59 UNLESS OTHERWISE NOTED
- SET 5/8"x30" IRON ROD w/CAP STAMPED "HIBBS-LS 52989"
- △ CALCULATED POSITION
- ( ) RECORD PER M77-30
- [ ] RECORD PER OAK MEADOWS SUBDIVISION PHASE 1 AND 2, VOL. 22, PG. 59
- <> RECORD PER WOODSIDE VILLAGE SUBDIVISION, VOL. 24, PG. 3

FIELD CREW: KADIN BAKER, SAGE BAKER  
 EQUIPMENT: TRIMBLE R10 RECEIVER W/ ORGN  
 OFFICE: NEIL HIBBS  
 DRAFTING: NEIL HIBBS

**NARRATIVE:**

THE PURPOSE OF THIS SURVEY WAS TO SET THE MISSING CORNERS OF THE COTTON PROPERTY. POINT "D" WAS SET AT A PROPORTIONED DISTANCE-DISTANCE INTERSECTION FROM POINTS "A" AND "I" PER VOL. 22, PG. 59. POINT "C" WAS SET ON AN EXTENSION OF LINE "B-F" AT RECORD DISTANCE FROM "D" PER VOL. 22, PG. 59. POINT "E" WAS SET ON AN EXTENSION OF LINE "C-D" AT A RECORD DISTANCE PER VOL. 22, PG. 59. POINT "H" WAS SET AT A PROPORTIONED DISTANCE-DISTANCE INTERSECTION FROM POINTS "F" AND "G". POINT "L" WAS SET AT A PROPORTIONED DISTANCE-DISTANCE INTERSECTION FROM POINTS "J" AND "K". POINT "M" WAS SET AT A RECORD DISTANCE-DISTANCE INTERSECTION FROM POINTS "K" AND "H" PER M77-30. POINT "O" WAS SET AT A PROPORTIONED DISTANCE-DISTANCE INTERSECTION FROM POINTS "C" AND "H" PER M77-30.

BASE OF BEARINGS- OREGON COORDINATE REFERENCE SYSTEM- O.C.R.S.  
 COTTAGE GROVE TO CANYONVILLE ZONE



J-N BEARS N 89°13'19" E 146.79' [N 88°58'55" E 146.47'-COMP]  
 J-K BEARS S 65°45'00" E 157.85' [S 62°36'29" E 157.81']- USED TO PROPORTION "L"

<b>SURVEY</b> LYING IN THE SW 1/4 OF SEC. 22, T27S, R6W WILLAMETTE MERIDIAN, DOUGLAS COUNTY, OREGON		REGISTERED PROFESSIONAL LAND SURVEYOR   OREGON JANUARY 12, 1990 F. NEIL HIBBS 52989 EXPIRATION DATE 6/30/2027	
CLIENT: THE COTTON FAMILY TRUST 3115 W. WOODSIDE AVE. ROSEBURG, OR. 97470	NEIL HIBBS LAND SURVEYING, INC 4739 LOOKINGGLASS RD. ROSEBURG, OR. 97471 phone: 541-957-9303 neilhibbslandsurv@gmail.com		
DWG SCALE: 1"= 30'	JOB NO.: 2975-01	DATE: AUGUST 2025	PAGE 1 OF 1

MAP FILE M186-27