

# CADASTRAL SURVEY LOCATED IN THE NW 1/4 OF SECTION 11, TOWNSHIP 22 SOUTH, RANGE 12 WEST, W.M., DOUGLAS COUNTY, OREGON.

FILED  
DATE: 5/27/25 BY: ICC  
THIS SURVEY CONSISTS OF:  
MAP: M186-2  
NARRATIVE: \_\_\_\_\_  
CORNER RPT.: \_\_\_\_\_  
DOUGLAS COUNTY SURVEYOR

**NARRATIVE**

THE PURPOSE OF THIS SURVEY WAS TO SET MONUMENTS AND MARK BOUNDARY LINES FOR RESOURCE MANAGEMENT.

THE PROCEDURE WAS TO LOCATE AND TIE RECORD MONUMENTS PER MAP FILE M33-29, MAP FILE M97-63, C.S. FILE NO. 63/50-4 AND C.S. FILE 58/298. WE SET THE CENTER-WEST 1/16 CORNER AT A MIDPOINT BETWEEN THE CENTER 1/4 AND THE WEST 1/4 OF SECTION 11 TO CLEARLY INDICATE A CHANGE IN ANGLE OF THE LINE TO BE MARKED. WE THEN TRAVERSED BETWEEN OUR SET AND FOUND MONUMENTS AND MARKED THE BOUNDARY WITH ORANGE FLAGGING AND ORANGE TREE BLAZES.

EQUIPMENT USED WAS A NIKON DTM 522 K2 TOTAL STATION WITH TDS RANGER DATA COLLECTOR.

ASSISTING PERSONNEL WERE BLUE JAMES, XANDER THALHEIMER, JOHN RONDEAU.

**BASIS OF BEARING**

THE BASIS OF BEARING IS ASSUMED PER MAP FILE M33-29.

**RECORD REFERENCE INFORMATION**

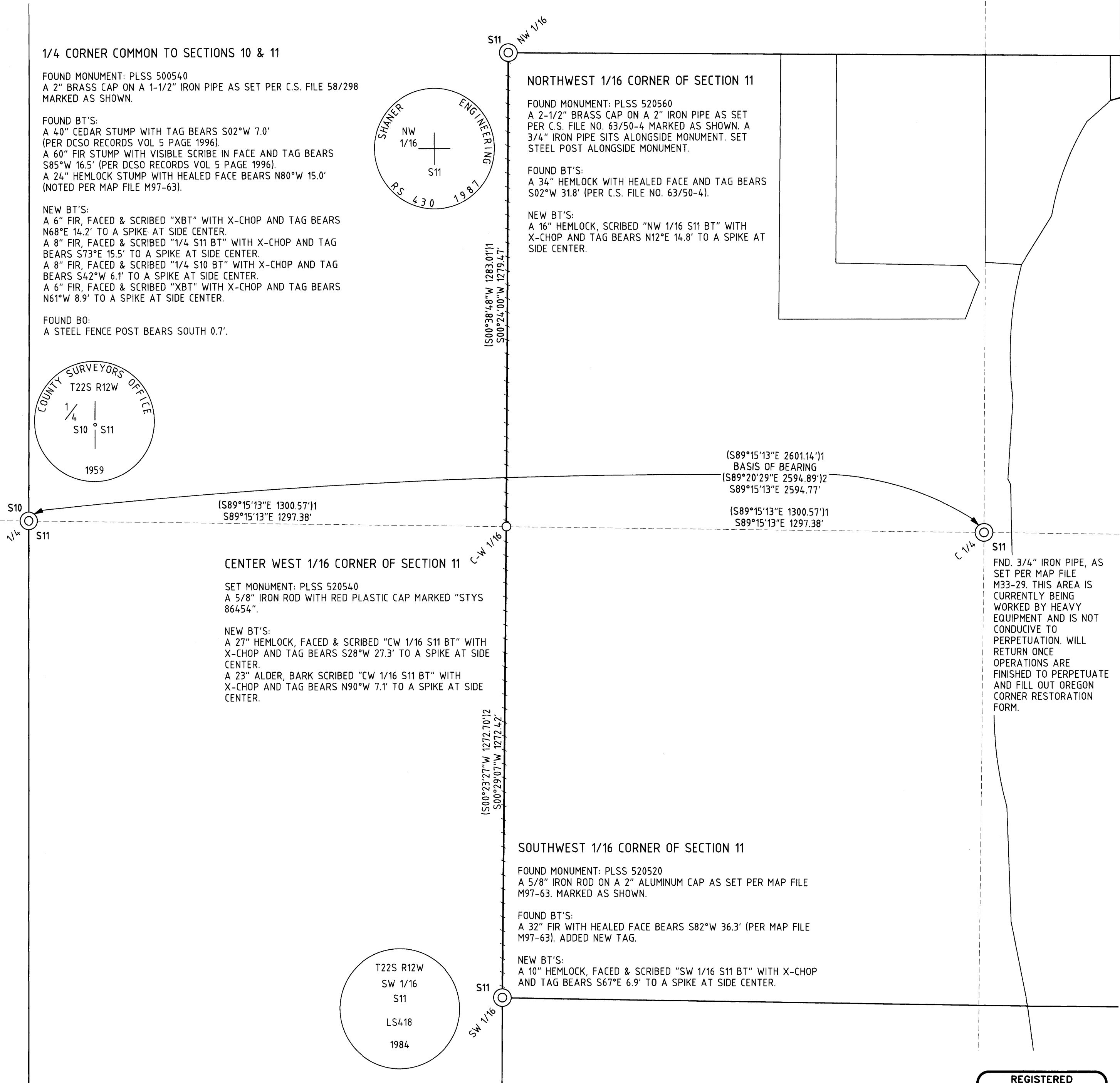
MAP FILE M33-29, BY: RICHARD J. HINTZ, DATED: JANUARY, 1968.  
MAP FILE M97-63, BY: BURTON W. HOLT, DATED: OCTOBER, 1984.

**LEGEND**

- FOUND MONUMENT AS NOTED
- SET 5/8" X 30" IRON ROD WITH PLASTIC CAP MARKED "STYS 86454PLS"
- BOUNDARY LINE MARKED WITH ORANGE FLAGGING AND ORANGE TREE BLAZES
- APPROXIMATE BOUNDARY OF UNSURVEYED PROPERTIES
- APPROXIMATE SECTION, 1/4 AND/OR 1/16 SECTION LINE
- ( 1 ) RECORD PER MAP FILE M33-29
- ( 2 ) RECORD PER MAP FILE M97-63



SCALE 1"=200'



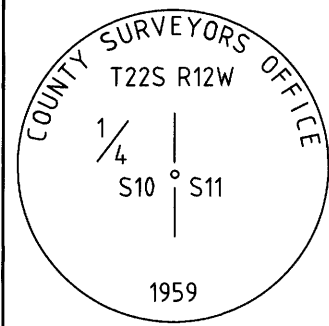
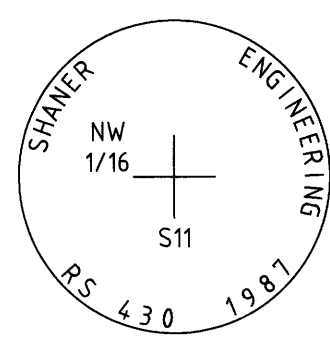
**1/4 CORNER COMMON TO SECTIONS 10 & 11**

FOUND MONUMENT: PLSS 500540  
A 2" BRASS CAP ON A 1-1/2" IRON PIPE AS SET PER C.S. FILE 58/298 MARKED AS SHOWN.

FOUND BT'S:  
A 40" CEDAR STUMP WITH TAG BEARS S02°W 7.0' (PER DCSO RECORDS VOL 5 PAGE 1996).  
A 60" FIR STUMP WITH VISIBLE SCRIBE IN FACE AND TAG BEARS S85°W 16.5' (PER DCSO RECORDS VOL 5 PAGE 1996).  
A 24" HEMLOCK STUMP WITH HEALED FACE BEARS N80°W 15.0' (NOTED PER MAP FILE M97-63).

NEW BT'S:  
A 6" FIR, FACED & SCRIBED "XBT" WITH X-CHOP AND TAG BEARS N68°E 14.2' TO A SPIKE AT SIDE CENTER.  
A 8" FIR, FACED & SCRIBED "1/4 S11 BT" WITH X-CHOP AND TAG BEARS S73°E 15.5' TO A SPIKE AT SIDE CENTER.  
A 8" FIR, FACED & SCRIBED "1/4 S10 BT" WITH X-CHOP AND TAG BEARS S42°W 6.1' TO A SPIKE AT SIDE CENTER.  
A 6" FIR, FACED & SCRIBED "XBT" WITH X-CHOP AND TAG BEARS N61°W 8.9' TO A SPIKE AT SIDE CENTER.

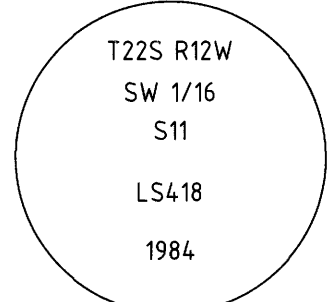
FOUND BO:  
A STEEL FENCE POST BEARS SOUTH 0.7'.



**CENTER WEST 1/16 CORNER OF SECTION 11**

SET MONUMENT: PLSS 520540  
A 5/8" IRON ROD WITH RED PLASTIC CAP MARKED "STYS 86454".

NEW BT'S:  
A 27" HEMLOCK, FACED & SCRIBED "CW 1/16 S11 BT" WITH X-CHOP AND TAG BEARS S28°W 27.3' TO A SPIKE AT SIDE CENTER.  
A 23" ALDER, BARK SCRIBED "CW 1/16 S11 BT" WITH X-CHOP AND TAG BEARS N90°W 7.1' TO A SPIKE AT SIDE CENTER.



REGISTERED  
PROFESSIONAL  
LAND SURVEYOR

*Stephan R. Stys*  
OREGON  
NOVEMBER 6, 2022  
STEPHAN R. STYS  
86454PLS  
EXPIRES 06/30/26



**PO BOX 778  
COOS BAY, OR 97420  
541-294-6915  
WWW.ESTABROOKLANDSURVEYING.COM**

**PREPARED FOR:**  
MOORE MILL & / SMITH RIVER LAND  
LUMBER CO. / & CATTLE CO.  
PO BOX 2777 / 19678 LOWER SMITH RIVER RD  
BANDON, OR 97411 / REEDSPORT, OR 97467

**DRAWN BY: BAC  
CHECKED BY: SRS  
JOB NO.: 2025-054  
DATE: 5/6/2025  
SHEET: 1 OF 1**