

**RECORD OF SURVEY**  
for  
**TIMBERLAB HOLDINGS INC.**  
in the  
NW 1/4 OF SECTION 17  
T 22 S, R 5 W, W.M.  
DOUGLAS COUNTY, OREGON

MAY 15, 2025

- LEGEND**
- ... FOUND MONUMENT AS NOTED
  - + ... COMPUTED POINT, NOTHING FOUND OR SET
  - ... SET MONUMENT - 5/8" X 30" REBAR WITH RED CAP
  - ( ) R1 ... RECORD DATA FROM CS M149-78
  - ( ) R1\* ... CALCULATED RECORD DATA FROM CS M149-78
  - ( ) R2 ... RECORD DATA FROM CS M153-74
  - ( ) R3 ... RECORD DATA FROM SOUTH DRAIN PLAT PER VOL 1, PAGE 1
  - ( ) R4 ... RECORD DATA FROM INSTRUMENT No. 2014-010551
  - AC ... ALUMINUM CAP

**NARRATIVE**

THE PURPOSE OF THIS SURVEY IS TO MONUMENT THE EXTERIOR BOUNDARY OF MY CLIENTS PROPERTIES PER INSTRUMENT NUMBERS 2014-009205, 2014-010551 AND 2023-006684 PER DOUGLAS COUNTY RECORDS. I FOUND AND HELD MONUMENTS (D), (E) AND (F) TO ESTABLISH THE WEST RIGHT OF WAY LINE OF CEDAR STREET. I HELD MONUMENTS (A), (B) AND (D) TO ESTABLISH THE SOUTH RIGHT OF WAY LINE OF DRAIN AVENUE. I HELD MONUMENTS (Q), (V) & (W) TO ESTABLISH THE RIGHT OF WAY OF WAY FIR STREET. I HELD MONUMENT (L), AND RECORD DISTANCE OF 80 FEET FROM MONUMENT (F) TO ESTABLISH THE NORTH RIGHT OF WAY LINE OF LANE STREET. I HELD 30 FEET FROM MONUMENTS (U), (R), (S) & (T) TO ESTABLISH THE REMAINING CENTERLINE OF LANE STREET. I PROPORTIONED BLOCKS 32, 33 AND 34 WHILE HOLDING FULL RIGHT OF WAYS FOR THE VACATED STREETS AND ALLEY WAYS.

**CURVE TABLE**

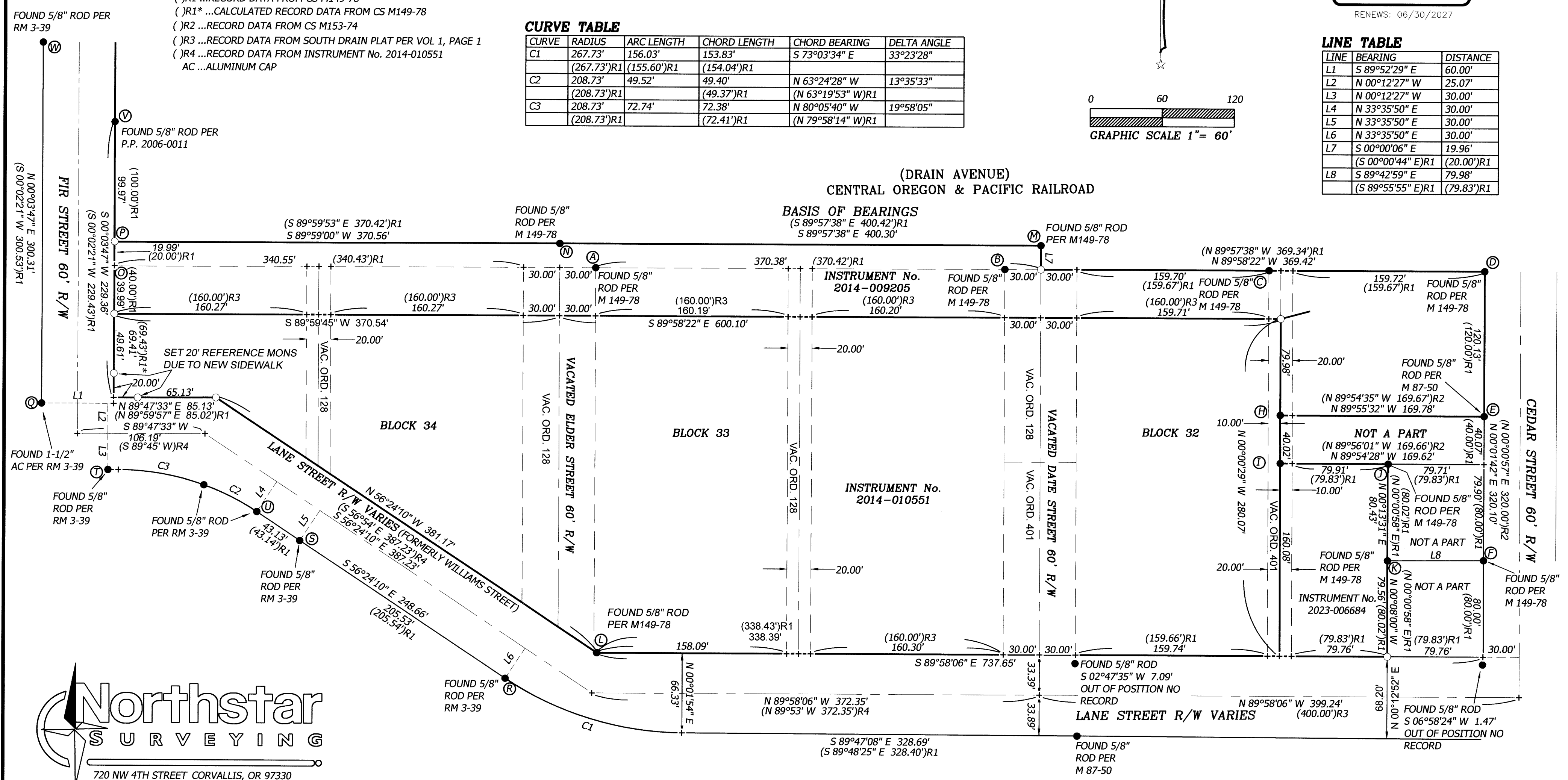
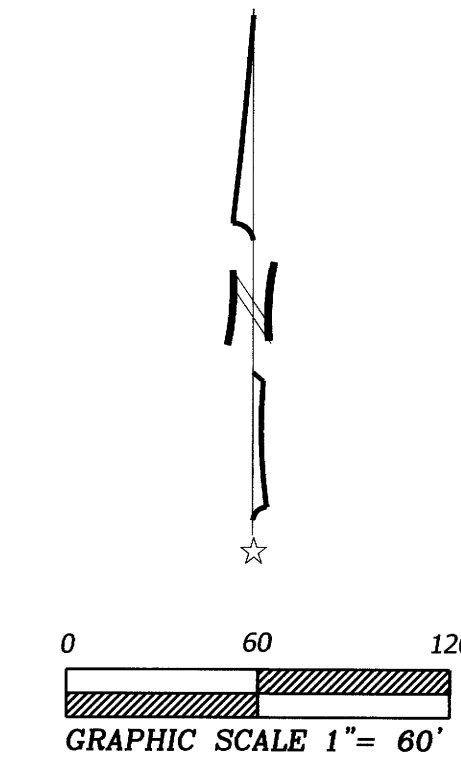
CURVE	RADIUS	ARC LENGTH	CHORD LENGTH	CHORD BEARING	DELTA ANGLE
C1	267.73'	156.03'	153.83'	S 73°03'34" E	33°23'28"
	(267.73')R1	(155.60')R1	(154.04')R1		
C2	208.73'	49.52'	49.40'	N 63°24'28" W	13°35'33"
	(208.73')R1		(49.37')R1	(N 63°19'53" W)R1	
C3	208.73'	72.74'	72.38'	N 80°05'40" W	19°58'05"
	(208.73')R1		(72.41')R1	(N 79°58'14" W)R1	

FILED  
Date: 8-6-2025 By: [Signature]  
This survey consists of:  
Map: M186-18  
Narrative:  
Corner Rpt:  
DOUGLAS COUNTY SURVEYOR

REGISTERED PROFESSIONAL LAND SURVEYOR  
[Signature]  
OREGON  
JANUARY 10, 2023  
DAVID ANDREW HALLOCK  
099849  
RENEWS: 06/30/2027

**LINE TABLE**

LINE	BEARING	DISTANCE
L1	S 89°52'29" E	60.00'
L2	N 00°12'27" W	25.07'
L3	N 00°12'27" W	30.00'
L4	N 33°35'50" E	30.00'
L5	N 33°35'50" E	30.00'
L6	N 33°35'50" E	30.00'
L7	S 00°00'06" E	19.96'
	(S 00°00'44" E)R1	(20.00')R1
L8	S 89°42'59" E	79.98'
	(S 89°55'55" E)R1	(79.83')R1



**Northstar SURVEYING**  
720 NW 4TH STREET CORVALLIS, OR 97330  
(541) 757-9050 FAX (541) 757-7578  
www.northstarsurveying.com

MAP FILE M186-18

MAP FILE M186-18