

**206—FOUND MONUMENT**

CORNER J-19, (GCDB 540500)  
1/4 CORNER OF SECTIONS 11 & 14 T. 24 S., R. 06 W., W.M.

APRIL 7, 1853 (ORIGINAL)  
ROBERT ELDER AND HENRY GILE, DEPUTY SURVEYORS  
UNDER CONTRACT #31  
(DCSO RECORDS VOLUME 8, PAGE 3145)  
SET 1/4 SECTION POST, FROM WHICH:  
A Y.OAK 12" DIA., BEARS S 18° W, 33 LKS. DIST.  
A Y.OAK 14" DIA., BEARS N 80° E, 5 LKS. DIST.

AUGUST 13, 1970  
V.R. TRACY, DOUGLAS COUNTY SURVEYOR  
(C.S. FILE 52/102-7)  
CORNER NOT FOUND AND NO TRACE OF OLD BT'S, LOGGED AND BURNED MANY YEARS AGO

SEPTEMBER 5, 1973 — AUGUST 19, 1975  
BLM DEPENDENT RESURVEY  
BY DANIEL L. BERRY, CHARLES E. AKIN JR, AND GLENN S. BAUGHMAN  
UNDER GROUP NO. 826 AND 856  
UNDER CONTRACT NO. 52500-CT5-1116  
(DCSO RECORDS VOLUME 37, PAGE 15240)  
POINT FOR THE 1/4 SECTION CORNER OF SECTIONS 11 & 14, AT PROPORTIONATE DISTANCE, THERE IS NO REMAINING EVIDENCE OF THE ORIGINAL CORNER  
SET AN IRON POST, 28" LONG, 2-1/2" DIA., 24" IN THE GROUND, WITH BRASS CAP MKD: T24S R6W 1/4 S11 S14 1973  
FROM WHICH:  
A CEDAR 25" DIA., BEARS N 41-1/2° E, 151 LKS. DIST. MKD: 1/4 S11 BT  
A MADRONE 5" DIA., BEARS S 81° E, 104-1/2 LKS. DIST. MKD: 1/4 S14 BT

AUGUST 2, 2023  
GARRETT FINCH AND CREW WITH MINISTER AND GLAESER SURVEYING  
FOUND 3-1/4" BLM BRASS CAP, 0.4" ABOVE GROUND FROM WHICH:  
A 42" CEDAR BEARS N 41-1/2° E, 102.7" WITH HEALED BLAZE (1973)  
(SET CHAINING NAIL AT SIDE CENTER, BT SIGNS ON FRONT AND REAR, AND PAINTED RED BAND FOR EXISTING BT)

ESTABLISHED THE FOLLOWING:  
A 21" CEDAR BEARS S 61° E, 7.4' MKD: 1/4 S14 BT  
(SET CHAINING NAIL AT SIDE CENTER, BT SIGNS ON FRONT AND BACK AND PAINTED RED BAND FOR NEW BT)

**207—FOUND MONUMENT**

CORNER H-19, (GCDB 540520)  
CS 1/16 CORNER OF SECTION 11 T. 24 S., R. 06 W., W.M.

SEPTEMBER 5, 1973 — AUGUST 19, 1975  
BLM DEPENDENT RESURVEY  
BY DANIEL L. BERRY, CHARLES E. AKIN JR, AND GLENN S. BAUGHMAN  
UNDER GROUP NO. 826 AND 856  
UNDER CONTRACT NO. 52500-CT5-1116  
(DCSO RECORDS VOLUME 37, PAGE 15249)  
POINT FOR THE CENTER S 1/16 SECTION CORNER OF SECTION 11,  
SET AN IRON POST, 28" LONG, 2-1/2" DIA., 23" IN THE GROUND, WITH BRASS CAP MARKED: C S 1/16 S11 C 1975  
FROM WHICH:  
A CEDAR 13" DIA., BEARS N 72° E, 300 LKS. DIST. MKD: CS 1/16 S11 BT  
A WHITE FIR 8" DIA., BEARS S 88° W, 66 LKS. DSIT. MKD: CS 1/16 S11 BT

AUGUST 2, 2023  
GARRETT FINCH AND CREW WITH MINISTER AND GLAESER SURVEYING  
FOUND 3-1/4" BLM BRASS CAP, 0.6" ABOVE GROUND FROM WHICH:  
AN EAST/WEST WIRE FENCE BEARS SOUTH 9.0'  
A 30" FIR BEARS S 88° W, 44.4' WITH HEALED BLAZE AND SIGN (1975)  
A 36" CEDAR BEARS N 72° E, 198.2' WITH HEALED BLAZE (1975)  
(SET CHAINING NAIL AT SIDE CENTER, BT SIGNS ON FRONT AND REAR, AND PAINTED RED BAND FOR EXISTING BT'S)

ESTABLISHED THE FOLLOWING:  
A 29" FIR BEARS S 38° E, 31.9' MKD: C S 1/16 S11 BT  
(SET CHAINING NAIL AT SIDE CENTER, BT SIGNS ON FRONT AND BACK AND PAINTED RED BAND FOR NEW BT)

**208—FOUND MONUMENT**

CORNER J-21, (GCDB 600500)  
CORNER OF SECTIONS 11, 12, 13 & 14 T. 24 S., R. 06 W., W.M.

APRIL 7, 1853 (ORIGINAL)  
ROBERT ELDER AND HENRY GILE, DEPUTY SURVEYORS  
(DCSO RECORDS VOLUME 8, PAGE 3138)  
SET POST CORNER TO SECTIONS 11, 12, 13 & 14, FROM WHICH:  
A Y.OAK 13" DIA., BEARS N 52-1/2° W, 120 LKS. DIST.  
A Y.OAK 16" DIA., BEARS N 73° E, 72 LKS. DIST.  
A Y.OAK 12" DIA., BEARS S 38° W, 25 LKS. DIST.  
A Y.OAK 17" DIA., BEARS S 79° E, 48 LKS. DIST.

AUGUST 13, 1970  
DOUGLAS COUNTY SURVEYORS OFFICE  
VERNON RAY TRACY & V. PERRON, CREW  
(C.S. FILE 52/102-8)  
FOUND:  
ORIG. 16" NOW 24" W.OAK, ALIVE, N 73° E, 47.5', SHOWS FAINT SCAR  
ORIG. 12" NOW 20" W.OAK, ALIVE, S 38° W, 16.5', OPEN WITH REVERSE SCRIBE  
ORIG. 17" NOW 25" W.OAK, ALIVE, S 79° E, 31.7', PREVIOUSLY OPENED, NEARLY REHEALED, RESCRIBED S13 ABOVE SCAR  
NW ORIG. BT, DOWN AND BADLY DECAYED  
SET BRASS CAP AT CORNER MKD:  
COUNTY SURVEYORS OFFICE T24S R6W S11 S12 S13 S14 1970  
NEW BT'S:  
A 13" W.OAK BEARS S 8° E, 25.0' MKD: T24S R6W S13 CS BT  
A 12" D.FIR BEARS N 66° E, 22.8' MKD: T24S R6W S12 CS BT  
A 9" W.OAK BEARS N 20° W, 29.1' MKD: T24S R6W S11 CS BT  
A 50" D.FIR BEARS S 56° W, 12.3' BARKS SCRIBED: T24S R6W S14 CS BT  
CORNER LIES ON WEST SLOPE IN OAK, LAUREL AND SCATTERED FIR

SEPTEMBER 5, 1973 — AUGUST 19, 1975  
BLM DEPENDENT RESURVEY  
BY DANIEL L. BERRY, CHARLES E. AKIN JR, AND GLENN S. BAUGHMAN  
UNDER GROUP NO. 826 AND 856  
UNDER CONTRACT NO. 52500-CT5-1116  
(DCSO RECORDS VOLUME 37, PAGE 15236)  
THE CORNER OF SECTIONS 11, 12, 13 & 14, PERPETUATED AND RECORDED BY VERNON R. TRACY, DEPUTY SURVEYOR, IN 1970, MONUMENTED WITH AN IRON POST, 1-1/2" DIA., FIRMLY SET, PROJECTING 12" ABOVE GROUND WITH BRASS CAP MKD: COUNTY SURVEYORS OFFICE T24S S11 S12 S13 S14 R6W 1970  
FROM WHICH THE REMAINS OF THE ORIGINAL BEARING TREES:  
A WHITE OAK, 25" DIA., BEARS N 73° E, 72 LKS. DIST., WITH HEALED BLAZE  
A WHITE OAK, 24" DIA., BEARS S 79° E, 48 LKS. DIST., WITH HEALED BLAZE  
A WHITE OAK, 20" DIA., BEARS S 38° W, 25 LKS. DIST., WITH FRAGMENTARY SCRIBE MARKS VISIBLE ON PARTIALLY HEALED BLAZE  
AND BEARING TREES MKD. BY TRACY:  
A FIR 13" DIA., BEARS N 66° E, 35 LKS. DIST., WITH HEALED BLAZE  
A WHITE OAK 15" DIA., BEARS S 9° E, 38 LKS. DIST., WITH SCRIBE MARKS:  
T24S R6W S13 CS BT VISIBLE ON PARTIALLY HEALED BLAZE  
A FIR 50" DIA., BEARS S 54° W, 19 LKS. DIST., WITH SCRIBE MARKS:  
T24S R6W S14 CS BT VISIBLE ON BARK  
A WHITE OAK 9" DIA., BEARS N 20° W, 44 LKS. DIST., WITH SCRIBE MARKS:  
T24S R6W S11 CS BT VISIBLE ON PARTIALLY HEALED BLAZE  
CORNER IS LOCATED ON A SPUR, SLOPES WEST.

AUGUST 3, 2023  
GARRETT FINCH AND CREW WITH MINISTER AND GLAESER SURVEYING  
FOUND 2-1/2" COUNTY SURVEYORS BRASS CAP, 1.4" ABOVE GROUND FROM WHICH:  
A 23" OAK BEARS S 38° W, 16.5' WITH PARTIALLY HEALED BLAZE (1853)  
A 55" FIR SNAG BEARS S 50° W, 12.1' WITH ILLIGIBLE BARK SCRIBE (1970)  
A 12" OAK BEARS N 20° W, 29.5' WITH HEALED BLAZE AND SIGN (1970)  
A 25" FIR BEARS N 66° E, 23.1' WITH HEALED BLAZE AND SIGN (1970)  
A 16" OAK BEARS S 8° E, 25.2' WITH HEALED BLAZE AND SIGN (1970)  
A ROOTHOLE BEARS N 73° E, 49.3' WITH OAK TRUNK ALONGSIDE (1853)  
(SET CHAINING NAIL AT SIDE CENTER, BT SIGNS ON FRONT AND REAR, AND PAINTED RED BAND FOR EXISTING BT'S)

**209—FOUND MONUMENT**

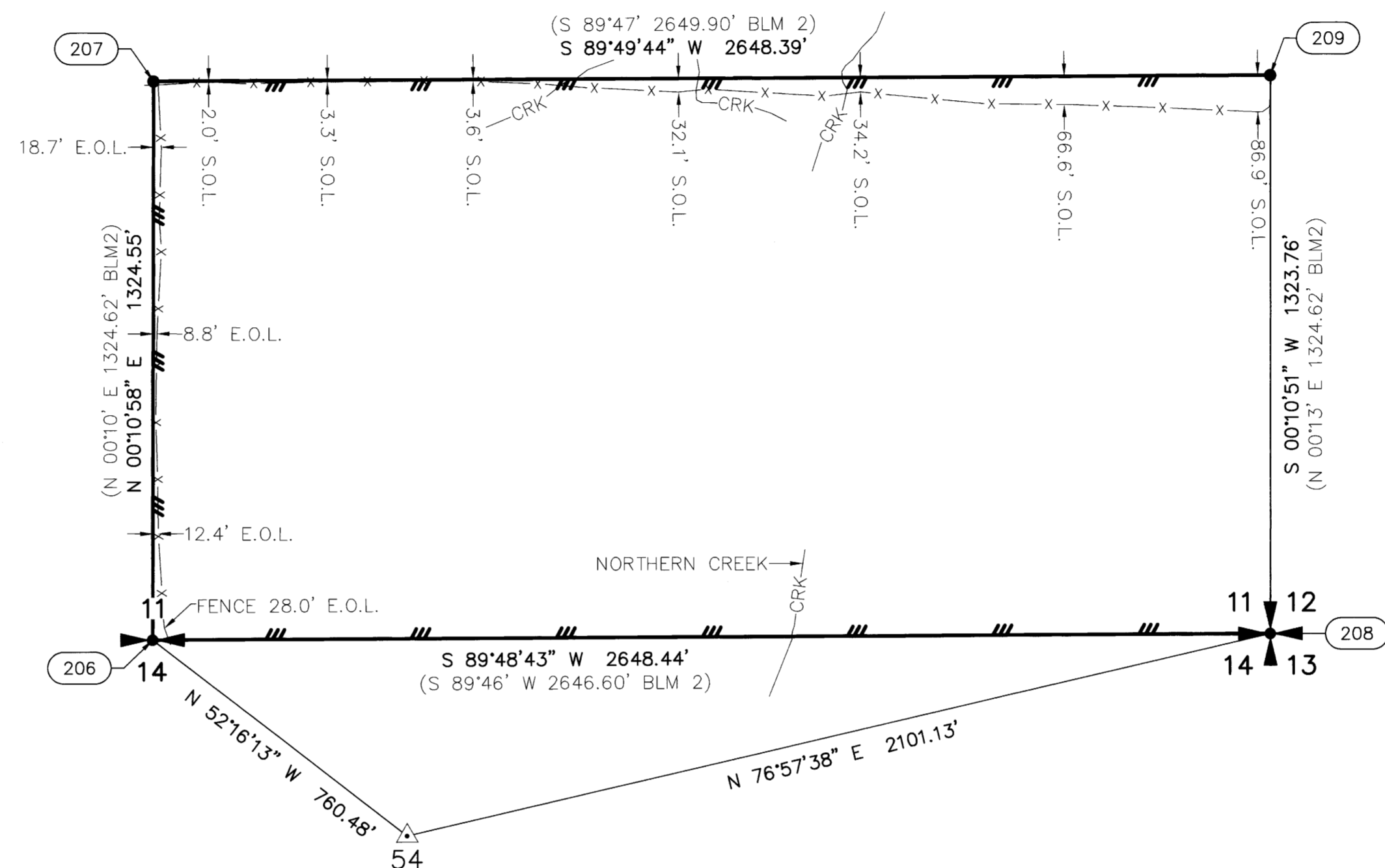
CORNER H-21, (GCDB 600520)  
S 1/16 CORNER OF SECTIONS 11 & 12 T. 24 S., R. 06 W., W.M.

SEPTEMBER 5, 1973 — AUGUST 19, 1975  
BLM DEPENDENT RESURVEY  
BY DANIEL L. BERRY, CHARLES E. AKIN JR, AND GLENN S. BAUGHMAN  
UNDER GROUP NO. 826 AND 856  
UNDER CONTRACT NO. 52500-CT5-1116  
(DCSO RECORDS VOLUME 37, PAGE 5238)  
POINT FOR THE S 1/16 SECTION CORNER OF SECTIONS 11 & 12,  
SET AN IRON POST, 28" LONG, 2-1/2" DIA., 24" IN THE GROUND, WITH BRASS CAP MKD: S 1/16 S11 S12 1973  
FROM WHICH:  
A FIR 15" DIA., BEARS N 61° E, 39 LKS. DIST. MKD: S 1/16 S12 BT  
A WHITE OAK 7" DIA., BEARS N 42° W, 30 LKS. DIST. MKD: S 1/16 S11 BT

AUGUST 3, 2023  
GARRETT FINCH AND CREW WITH MINISTER AND GLAESER SURVEYING  
FOUND 3-1/4" BLM BRASS CAP, 0.5" ABOVE GROUND FROM WHICH:  
A NORTH/SOUTH WIRE FENCE BEARS EAST 1.3'  
A ROOTHOLE BEARS N 42° W, 19.8' (1973)

ESTABLISHED THE FOLLOWING:  
AN 8" FIR BEARS N 66° W, 16.3' MKD: S 1/16 S11 BT  
A 9" OAK BEARS S 32° E, 18.2' MKD: S 1/16 S12 BT  
(SET CHAINING NAIL AT SIDE CENTER, BT SIGNS ON FRONT AND BACK AND PAINTED RED BAND FOR NEW BT)

MONUMENT TABLE			
POINT NO.	NORTHING	EASTING	DESCRIPTION
206	239458.00	152650.11	3-1/4" BRASS DISK
207	240782.54	152654.33	3-1/4" BRASS DISK
208	239466.69	155298.53	2-1/2" BRASS DISK
209	240790.44	155302.71	3-1/4" BRASS DISK



REGISTERED PROFESSIONAL LAND SURVEYOR  
 2/29/2024  
 Daniel A. Renton  
 OREGON  
 JUNE 30, 1997  
 DANIEL A. RENTON  
 2830  
 Expires 12-31-2024

SCALE 1 INCH = 300 FEET

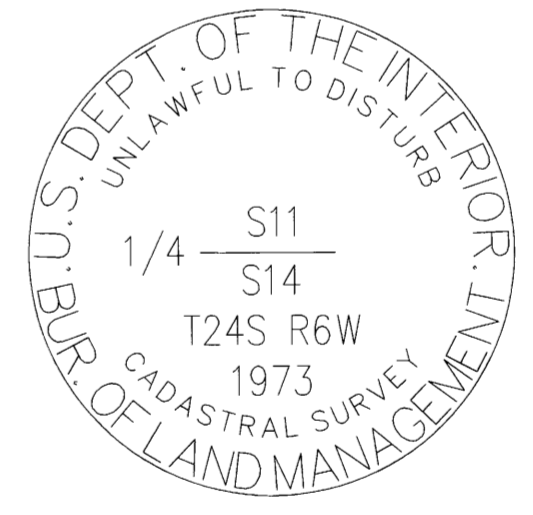
**RECORD OF SURVEY**

LOCATED IN A PORTION OF  
GOV'T LOTS 3 & 4 IN THE NW 1/4 OF SECTION 5  
THE SW 1/4, SE 1/4 OF THE SE 1/4 OF SECTION 11  
THE NE 1/4, SE 1/4 OF THE NW 1/4 OF SECTION 15  
T. 24 S., R. 6 W., W.M.  
MEAN MUSTARD & GALAGHER CANYON 1—TASK A  
DOUGLAS COUNTY, OREGON  
CONTRACT NO. 1204T020D0010  
TASK ORDER NO. 140L4322F0063

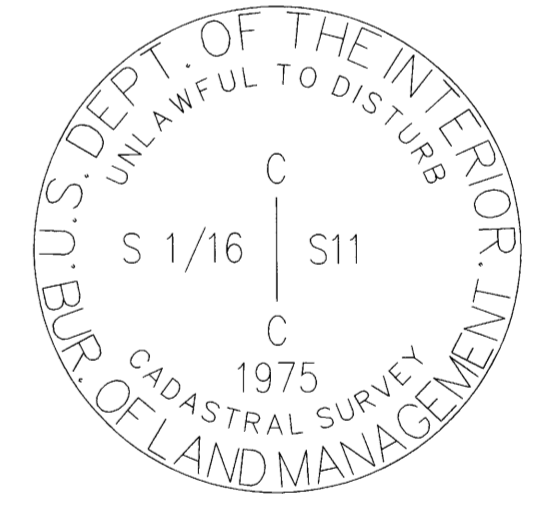
FILED  
DATE: 9-11-2024 BY: [Signature]  
THIS SURVEY CONSISTS OF:  
MAP: M185-6 A-D  
NARRATIVE:  
CORNER RPT:  
DOUGLAS COUNTY SURVEYOR

- LEGEND:**
- INDICATES MONUMENT FOUND AS NOTED IN TABLES
  - ⊙ INDICATES 5/8" X 30" REBAR WITH 2" ALUMINUM CAP, SET SEE MONUMENT DETAILS SHEET 2
  - △ INDICATES MGS CONTROL POINT SEE CONTROL TABLE, SHEET 1
  - (S#) INDICATES RECORD DATA PER SURVEY REFERENCE NUMBER
  - (BLM#) INDICATES RECORD DATA PER BUREAU OF LAND MANAGEMENT NUMBER
  - T. INDICATES TOWNSHIP
  - R. INDICATES RANGE
  - SEC. INDICATES SECTION
  - GLO INDICATES GENERAL LAND OFFICE
  - BT INDICATES BEARING TREE
  - CH INDICATES CHAINS (1 CHAIN=66 FEET)
  - LKS INDICATES LINKS (1 LINK=0.66 FEET)
  - W/ INDICATES WITH
  - RPC INDICATES RED PLASTIC CAP
  - ALUM. INDICATES ALUMINUM
  - CONT. INDICATES CONTINUED
  - N.O.L. INDICATES NORTH OF LINE
  - E.O.L. INDICATES EAST OF LINE
  - S.O.L. INDICATES SOUTH OF LINE
  - W.O.L. INDICATES WEST OF LINE
  - — — INDICATES BOUNDARY LINE, MARKED AND POSTED
  - — — INDICATES SECTION SUBDIVISION
  - CRK — INDICATES CENTERLINE OF CREEK
  - — — INDICATES CENTERLINE OF ROAD
  - x — x — INDICATES FENCE LINE

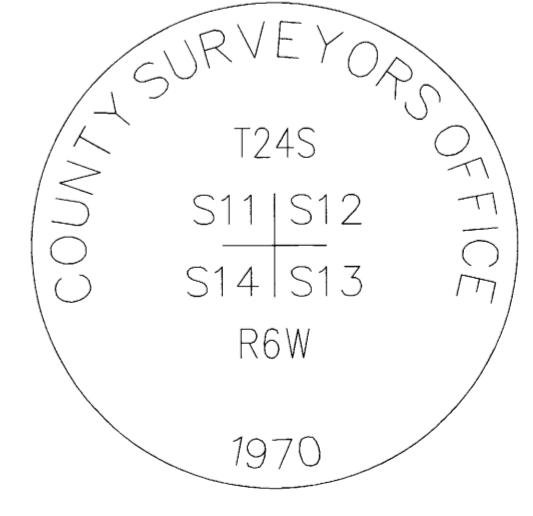
**PLSS CORNERS**



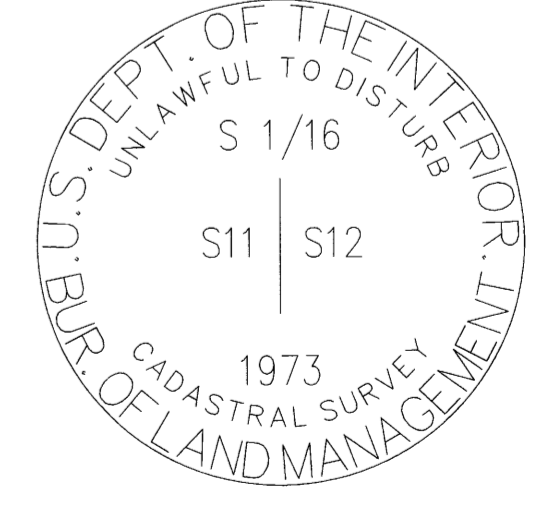
POINT NUMBER: 206



POINT NUMBER: 207



POINT NUMBER: 208



POINT NUMBER: 209

**BLM REFERENCES:**

2) (1975) BUREAU OF LAND MANAGEMENT RESURVEY AND NOTES FOR T. 24 S., R. 6 W., W.M.  
EXECUTED BY DANIEL L. BERRY, CHARLES E. AKIN, GLENN S. BAUGHMAN  
GROUP #826 & #856 — CONTRACT #52500-CT5-1116  
COMMENCED 9/5/1973 — COMPLETED 8/19/1975  
DEPENDENT RESURVEY DATED 8/18/1977 (5590)

MINISTER—GLAESER SURVEYING INC.  
2200 E. EVERGREEN BLVD.  
VANCOUVER, WA 98661  
(360) 694-3313

SCALE: 1"=300'  
JOB NO. 22-319  
DATE: 2/29/2024  
CALC BY: DAR  
DRAWN BY: RDH  
CHECKED BY: DAR  
SHEET 4 OF 4