

202-FOUND MONUMENT

CORNER J-14, (GCDB 420500) W 1/16 CORNER OF SECTIONS 10 & 15 T. 24 S., R. 06 W., W.M.

SEPTEMBER 5, 1973 - AUGUST 19, 1975 BLM DEPENDENT RESURVEY BY DANIEL L. BERRY, CHARLES E. AKIN JR, AND GLENN S. BAUGHMAN UNDER GROUP NO. 826 AND 856 UNDER CONTRACT NO. 52500-CT5-1116 (DCSO RECORDS VOLUME 37, PAGE 15248) THE W 1/16 SECTION CORNER OF SECTIONS 10 & 15, ESTABLISHED BY ROSEBURG LUMBER CO., IN 1973, MONUMENTED WITH A WOODEN POST, 4" SQUARE, FIRMLY SET, PROJECTING 4" ABOVE GROUND, FROM WHICH BEARING TREES MARKED BY ROSEBURG LUMBER CO: A FIR 13" DIA., BEARS N 22-1/2' E, 30-1/2 LKS. DIST., NO MARKS VISIBLE ON OPEN BLAZE A FIR 37" DIA., BEARS S 83' E, 32 LKS. DIST., NO MARKS VISIBLE ON OPEN BLAZE AT THE CORNER POINT, SET AN IRON POST, 28" LONG, 2-1/2" DIA., 24" IN THE GROUND, WITH BRASS CAP MKD: W 1/16 S10 S15 1973 FROM WHICH NEW BEARING TREES: A FIR 13" DIA., BEARS N 41' E, 44-1/2 LKS. DIST. MKD: W 1/16 S10 BT A FIR 18" DIA., BEARS S 84' E, 51 LKS. DIST. MKD: W 1/16 S15 BT RESET WOODEN POST ALONGSIDE IRON POST.

SEPTEMBER 5, 1991 - OCTOBER 2, 1991 BLM DEPENDENT RESURVEY BY WAYNE L. ROGERS, CADASTRAL SURVEYOR UNDER GROUP NO. 1623 (DCSO RECORDS VOLUME 50, PAGES 19228-229) THE W 1/16 SECTION CORNER OF SECTIONS 10 & 15, MONUMENTED WITH AN IRON POST, 2-1/2" DIA., FIRMLY SET, PROJECTING 4" ABOVE GROUND, WITH BRASS CAP MKD: W 1/16 S10 S15 1973 FROM WHICH THE BEARING TREES MKD. BY ROSEBURG LUMBER CO. IN 1973: A FIR 17" DIA., BEARS N 22-1/2' E, 30-1/2 LKS. DIST., WITH HEALED BLAZE A FIR 9" DIA., BEARS S 83' E, 32 LKS. DIST., WITH HEALED BLAZE AND BEARING TREES MKD. BY BERRY, AKIN, AND BAUGHMAN: A FIR 16" DIA., BEARS N 41' E, 44-1/2 LKS. DIST., WITH HEALED BLAZE A FIR 20" DIA., BEARS S 84' E, 51 LKS. DIST., WITH HEALED BLAZE

AUGUST 1, 2023 GARRETT FINCH AND CREW WITH MINISTER AND GLAESER SURVEYING FOUND 3-1/4" BLM BRASS CAP, 0.6" ABOVE GROUND FROM WHICH: AN EAST/WEST WIRE FENCE BEARS NORTH 1.3' A 25" FIR BEARS S 88' E, 33.7', WITH HEALED BLAZE AND SIGN (1973) A 9" FIR SNAG BEARS S 83' E, 20.6' WITH SIGN (1973) A 20" FIR BEARS N 41' E, 29.1' WITH HEALED BLAZE AND SIGN (1973) A 23" FIR BEARS N 22' E, 20.2' WITH SIGN (1973) (SET CHAINING NAIL AT SIDE CENTER, BT SIGNS ON FRONT AND REAR, AND PAINTED RED BAND FOR EXISTING BT'S)

203-FOUND MONUMENT

CORNER L-14, (GCDB 420440) C-W 1/16 CORNER OF SECTION 15 T. 24 S., R. 06 W., W.M.

SEPTEMBER 5, 1991 - OCTOBER 2, 1991 BLM DEPENDENT RESURVEY BY WAYNE L. ROGERS, CADASTRAL SURVEYOR UNDER GROUP NO. 1623 (DCSO RECORDS VOLUME 50, PAGES 19230-1) THE POINT FOR THE CENTER WEST 1/16 SECTION CORNER OF SECTION 15, SET A STAINLESS STEEL POST, 28" LONG, 2-1/2" DIA., 22" IN THE GROUND, WITH BRASS CAP MKD: W 1/16 C-C S15 1991 FROM WHICH: A FIR 24" DIA., BEARS S 72' W, 43 LKS. DIST. MKD: CW 1/16 S15 BT A FIR 26" DIA., BEARS N 16' W, 40 LKS. DIST. MKD: CW 1/16 S15 BT DEPOSIT A WHITE "DEEP-1" MAGNETIC MARKER AT BASE OF STAINLESS POST

SEPTEMBER 4, 1998 MARK F. SMALLLEY (MAP FILE M129-12) FOUND 1991 CADASTRAL BRASS CAP ON IRON PIPE FROM WHICH: 24" FIR BEARS S 72' W, 28.4' HEALED 26" FIR BEARS N 16' W, 26.4' HEALED

AUGUST 1, 2023 GARRETT FINCH AND CREW WITH MINISTER AND GLAESER SURVEYING FOUND 3-1/4" BLM BRASS CAP, 0.5' ABOVE GROUND FROM WHICH: A 30" FIR BEARS S 72' W, 28.3' WITH HEALED BLAZE AND SIGN (1991) A 29" FIR STUMP BEARS N 16' W, 26.9' WITH HEALED BLAZE AND SIGN (1991) (SET CHAINING NAIL AT SIDE CENTER, BT SIGNS ON FRONT AND REAR, AND PAINTED RED BAND FOR EXISTING BT'S)

ESTABLISHED THE FOLLOWING: AN 11" FIR BEARS N 20' E, 30.1' MKD: CW 1/16 S15 BT (SET CHAINING NAIL AT SIDE CENTER, BT SIGNS ON FRONT AND BACK AND PAINTED RED BAND FOR NEW BT)

SURVEY REFERENCES:

- 1) (2012) SWEEDEN SURVEY MAP FILE M163-27 SECTION 15, T. 24 S., R. 6 W., W.M.
2) (1998) SMALLLEY SURVEY MAP FILE M129-12 SECTION 15, T. 24 S., R. 6 W., W.M.

BLM REFERENCES:

- 2) (1975) BUREAU OF LAND MANAGEMENT RESURVEY AND NOTES FOR T. 24 S., R. 6 W., W.M. EXECUTED BY DANIEL L. BERRY, CHARLES E. AKIN, GLENN S. BAUGHMAN GROUP #826 & #856 - CONTRACT #52500-CT5-1116 COMMENCED 9/5/1973 - COMPLETED 8/19/1975 DEPENDENT RESURVEY DATED 8/18/1977 (5590)
3) (1991) BUREAU OF LAND MANAGEMENT RESURVEY AND NOTES FOR T. 24 S., R. 6 W., W.M. EXECUTED BY WAYNE L. ROGERS GROUP #1623 COMMENCED 9/5/1991 - COMPLETED 10/2/1991 DEPENDENT RESURVEY DATED 6/27/1994 (6591)

204-FOUND MONUMENT

CORNER J-15, (GCDB 440500) 1/4 CORNER OF SECTIONS 10 & 15 T. 24 S., R. 06 W., W.M.

1853 GLO SURVEY BY R. ELDER UNDER CONTRACT NO. 21 (DCSO RECORDS VOLUME 8, PAGE 3151) SET 1/4 SECTION POST FROM WHICH: A FIR 36" DIA., BEARS S 14' E, 30 LKS (ALL RECORDS BELOW S 14' W, 30 LKS.) A FIR 24" DIA., BEARS N 33' W, 56 LKS.

SEPTEMBER 5, 1973 - AUGUST 19, 1975 BLM DEPENDENT RESURVEY BY DANIEL L. BERRY, CHARLES E. AKIN JR, AND GLENN S. BAUGHMAN UNDER GROUP NO. 826 AND 856 UNDER CONTRACT NO. 52500-CT5-1116 (DCSO RECORDS VOLUME 37, PAGES 15247-48) THE 1/4 CORNER OF SECTIONS 10 & 15, PERPETUATED BY PERSON(S) UNKNOWN, MONUMENTED WITH A WOODEN POST, 4" SQUARE, FIRMLY SET, PROJECTING 10" ABOVE GROUND, FROM WHICH THE REMAINS OF THE ORIGINAL BEARING TREES: A SAWED FIR STUMP, 48" DIA., BEARS S 14' W, 30 LKS. DIST., NO MARKS VISIBLE ON OPENED BLAZE AT THE CORNER POINT, SET AN IRON POST, 28" LONG, 2-1/2" DIA., 24" IN THE GROUND, WITH BRASS CAP MKD: 1/4 S10 S15 T24S R6W 1973 FROM WHICH NEW BEARING TREES: A FIR 10" DIA., BEARS N 79' E, 53 LKS. DIST. MKD: 1/4 S10 BT A FIR 6" DIA., BEARS S 63' W, 20 LKS. DIST. MKD: 1/4 S15 BT RESET WOODEN POST ALONGSIDE IRON POST. FROM THIS POINT, A LOCAL CORNER ESTABLISHED BY ROSEBURG LUMBER CO., IN 1973, BEARS N 28' W, 0.05 CH. DIST., MONUMENTED WITH AND IRON PIPE, 1-1/2" DIA., FIRMLY SET, PROJECTING 28" ABOVE GROUND, FROM WHICH BEARING TREES MKD. BY ROSEBURG LUMBER CO: A FIR 10" DIA., BEARS N 77-1/2' E, 24 LKS. DIST., NO MARKS VISIBLE ON OPEN BLAZE A FIR 4" DIA., BEARS S 19' W, 12 LKS. DIST., NO MARKS VISIBLE ON OPEN BLAZE

SEPTEMBER 5, 1991 - OCTOBER 2, 1991 BLM DEPENDENT RESURVEY BY WAYNE L. ROGERS, CADASTRAL SURVEYOR UNDER GROUP NO. 1623 (DCSO RECORDS VOLUME 50, PAGE 19228) FROM THE 1/4 SECTION CORNER OF SECTIONS 10 & 15, MONUMENTED WITH AN IRON POST, 2-1/2" DIA., FIRMLY SET, PROJECTING 4" ABOVE GROUND, WITH BRASS CAP MKD: 1/4 S10 S15 T24S R6W 1973 FROM WHICH THE REMAINS OF AN ORIGINAL BEARING TREE: A SAWED FIR STUMP, 48" DIA., BEARS S 14' W, 30 LKS. DIST., NO MARKS VISIBLE ON OPENED BLAZE AND BEARING TREES MKD. BY BERRY, AKIN, AND BAUGHMAN: A FIR 18" DIA., BEARS N 79' E, 53 LKS. DIST., WITH HEALED BLAZE A FIR 13" DIA., BEARS S 63' W, 20 LKS. DIST., WITH HEALED BLAZE FROM THIS POINT, A LOCAL CORNER ESTABLISHED BY ROSEBURG LUMBER CO., IN 1973, BEARS N 28' W, 0.05 CH. DIST., MONUMENTED WITH AND IRON PIPE, 1-1/2" DIA., FIRMLY SET, PROJECTING 28" ABOVE GROUND, FROM WHICH BEARING TREES MKD. BY ROSEBURG LUMBER CO: A FIR 10" DIA., BEARS N 77-1/2' E, 24 LKS. DIST., NO MARKS VISIBLE ON HEALED BLAZE A FIR 4" DIA., BEARS S 19' W, 12 LKS. DIST., HEALED BLAZE

SEPTEMBER 5, 1991 - OCTOBER 2, 1991 BLM DEPENDENT RESURVEY BY WAYNE L. ROGERS, CADASTRAL SURVEYOR UNDER GROUP NO. 1623 (DCSO RECORDS VOLUME 50, PAGE 19228) FROM THE 1/4 SECTION CORNER OF SECTIONS 10 & 15, MONUMENTED WITH AN IRON POST, 2-1/2" DIA., FIRMLY SET, PROJECTING 4" ABOVE GROUND, WITH BRASS CAP MKD: 1/4 S10 S15 T24S R6W 1973 FROM WHICH THE REMAINS OF AN ORIGINAL BEARING TREE: A SAWED FIR STUMP, 48" DIA., BEARS S 14' W, 30 LKS. DIST., NO MARKS VISIBLE ON OPENED BLAZE AND BEARING TREES MKD. BY BERRY, AKIN, AND BAUGHMAN: A FIR 18" DIA., BEARS N 79' E, 53 LKS. DIST., WITH HEALED BLAZE A FIR 13" DIA., BEARS S 63' W, 20 LKS. DIST., WITH HEALED BLAZE FROM THIS POINT, A LOCAL CORNER ESTABLISHED BY ROSEBURG LUMBER CO., IN 1973, BEARS N 28' W, 0.05 CH. DIST., MONUMENTED WITH AND IRON PIPE, 1-1/2" DIA., FIRMLY SET, PROJECTING 28" ABOVE GROUND, FROM WHICH BEARING TREES MKD. BY ROSEBURG LUMBER CO: A FIR 10" DIA., BEARS N 77-1/2' E, 24 LKS. DIST., NO MARKS VISIBLE ON HEALED BLAZE A FIR 4" DIA., BEARS S 19' W, 12 LKS. DIST., HEALED BLAZE

FEBRUARY 2, 2012 CARL SWEEDEN WITH SWEEDEN LAND SURVEYING (DCSO RECORDS M163-27) FOUND 3-1/4" 1973 BRASS CAP FROM WHICH: A 48" SAWED STUMP BEARS S 14' W, 19.8' ROTTING WITH SAWN FACE A 23" SAWN W.FIR STUMP (6.5' HIGH) BEARS N 79' E, 35', FAINT SCAR ON FACE A 20" D.FIR BEARS S 63' W, 13.2', VERY FAINT SCAR, TAG A 1-1/2" IRON PIPE BEARS N 28' W, 3.3' ROSEBURG LUMBER CO. BT'S TO IRON PIPE: A 22" SAWN FIR STUMP (2' HIGH) BEARS N 77-30' E, 15.8' AN 11" FIR BEARS S 19' W, 7.9' DOUBLE SCAR, TAG

AUGUST 1, 2023 GARRETT FINCH AND CREW WITH MINISTER AND GLAESER SURVEYING FOUND 3-1/4" BLM BRASS CAP, 0.5' ABOVE GROUND FROM WHICH: AN EAST/WEST WIRE FENCE BEARS NORTH 2' A NORTH/SOUTH BARB WIRE FENCE BEARS EAST 0.4' A 1-1/2" IRON PIPE BEARS N 28' W 3.3' (1973 ROSEBURG LUMBER CO.) A 12" FIR BEARS S 42' W, 7.2' TO BLM BRASS CAP WITH HEALED DOUBLE BLAZE AND SIGN (1973 RECORD TO ROSEBURG IRON PIPE, S 19' W, 12 LKS.) A 24" FIR BEARS S 63' W, 14.0' WITH HEALED BLAZE AND SIGN (1973) A 38" STUMP (4' HIGH) BEARS S 14' W, 19.5' (ORIG.) A 17" ROTTED STUMP BEARS N 68' E, 14.6' TO BLM BRASS CAP (1973 RECORD TO ROSEBURG IRON PIPE, N 77-1/2' E, 24 LKS.) A 13" ROTTED STUMP (6' HIGH) BEARS N 72' E, 35.1' (1973) (SET CHAINING NAIL AT SIDE CENTER, BT SIGNS ON FRONT AND REAR, AND PAINTED RED BAND FOR EXISTING BT'S)

ESTABLISHED THE FOLLOWING: A 7" FIR BEARS N 83' E, 7.3' MKD: 1/4 S10 BT (SET CHAINING NAIL AT SIDE CENTER, BT SIGNS ON FRONT AND BACK AND PAINTED RED BAND FOR NEW BT)

MONUMENT TABLE with columns: POINT NO., NORTHING, EASTING, DESCRIPTION. Rows include points 202, 203, 204, and 205 with their respective coordinates and descriptions.

205-FOUND MONUMENT

CORNER L-15, (GCDB 440440) C 1/4 CORNER OF SECTION 15 T. 24 S., R. 06 W., W.M.

SEPTEMBER 5, 1991 - OCTOBER 2, 1991 BLM DEPENDENT RESURVEY BY WAYNE L. ROGERS, CADASTRAL SURVEYOR UNDER GROUP NO. 1623 (DCSO RECORDS VOLUME 50, PAGE 19230) POINT FOR THE CENTER 1/4 SECTION CORNER OF SECTION 15, AT INTERSECTION WITH THE EAST AND WEST CENTERLINE. SET A STAINLESS STEEL POST, 28" LONG, 2-1/2" DIA., 24" IN THE GROUND, WITH BRASS CAP MKD: T24S R6W C 1/4 S15 1991 FROM WHICH: A FIR 9" DIA., BEARS N 37' E, 33 LKS. DIST. MKD: C 1/4 S15 BT A FIR 12" DIA., BEARS N 50' W, 14 LKS. DIST. MKD: C 1/4 S15 BT DEPOSIT A WHITE "DEEP-1" MAGNETIC MARKER AT BASE OF STAINLESS STEEL POST

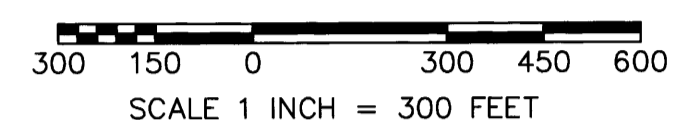
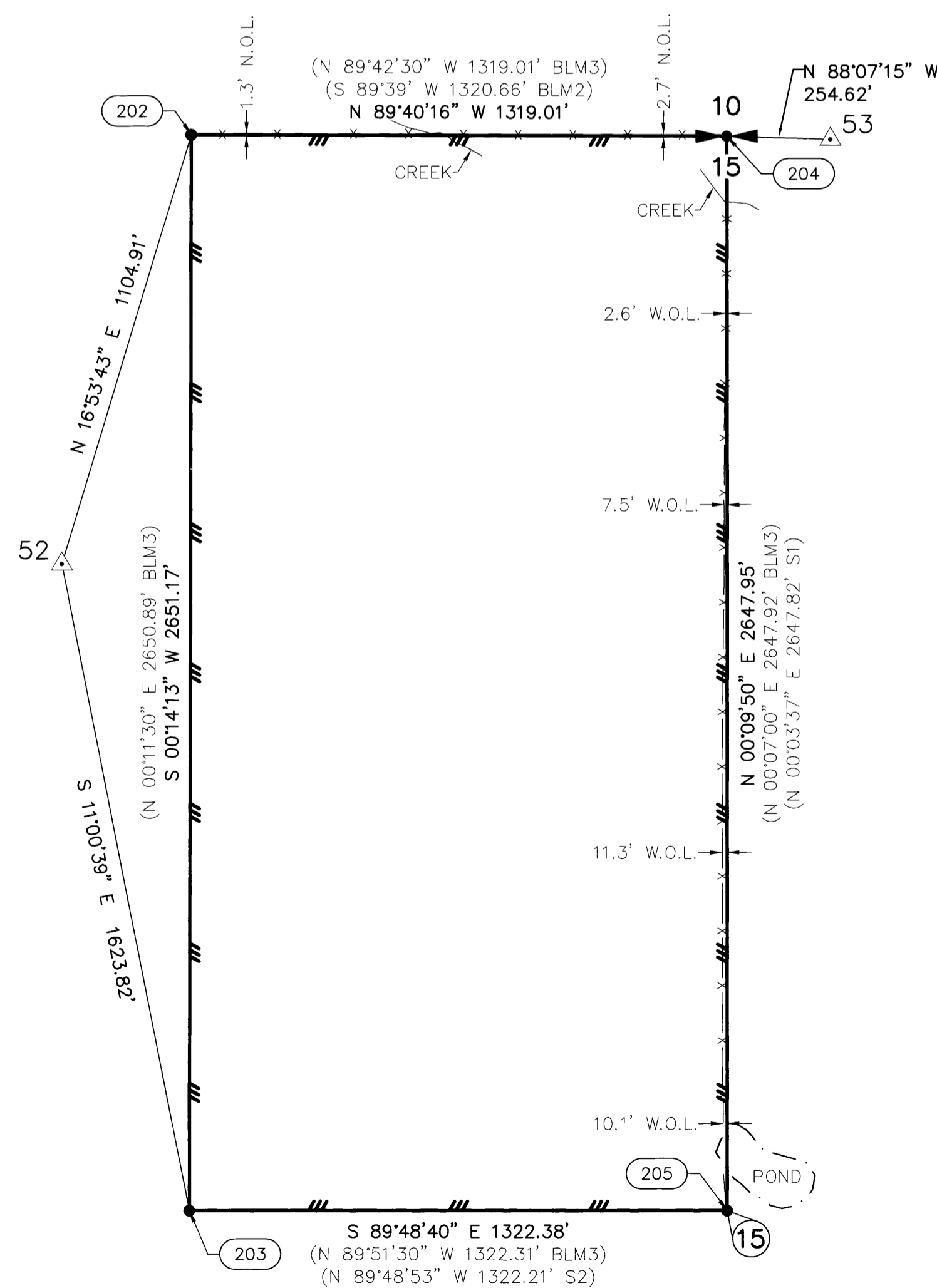
SEPTEMBER 4, 1998 MARK F. SMALLLEY (MAP FILE M129-12) FOUND 1991 CADASTRAL BRASS CAP ON IRON PIPE FROM WHICH: 9" FIR BEARS N 37' E, 21.8' HEALED 13" FIR BEARS N 50' W, 9.2' PART HEALED SCRIBED: 13" FIR BEARS S 30' W, 9.6' MKD: C 1/4 BT 10" FIR BEARS S 15' E, 10.6' MKD: C 1/4 BT

FEBRUARY 2, 2012 CARL SWEEDEN WITH SWEEDEN LAND SURVEYING (DCSO RECORDS M163-27) FOUND 3-1/4" 1991 BRASS CAP FROM WHICH: A 9" D.FIR, DOWN, BEARS N 37' E, 21.8' TO ROTHOLE, TAG STILL ON TREE A 13" SAWN D.FIR STUMP (14' HIGH) BEARS N 50'W, 9.2', SCAR ON FACE, TAG A 13" SAWN D.FIR STUMP (4' HIGH) BEARS S 30' W, 9.6', SCRIBE VISIBLE, TAG A 9" SAWN D.FIR STUMP (4' HIGH) BEARS S 15' E, 10.6', SCRIBE VISIBLE

SEPTEMBER 17, 2018 F. NEIL HIBBS FOUND BRASS CAP AND BT'S OF RECORD C 1/4 PLSS #440440

AUGUST 1, 2023 GARRETT FINCH AND CREW WITH MINISTER AND GLAESER SURVEYING FOUND 3-1/4" BLM BRASS CAP, 0.3" ABOVE GROUND FROM WHICH: A NORTH/SOUTH BARB WIRE FENCE BEARS 2.5' WEST A 9" ROTTED STUMP BEARS S 25' E, 10.3' TO SIDE CENTER, MKD. C 1/4 BT WITH NAIL/WASHER LS2354 AT BASE OF BLAZE & SIGN, 9.8' TO NAIL AT FACE (1998) A 12" ROTTEN STUMP BEARS S 28' W, 9.5' TO SIDE CENTER, MKD: C 1/4 BT WITH NAIL/WASHER LS2354 AT BASE OF BLAZE & SIGN, 8.7' TO NAIL AT FACE (1998) A 12" SNAG BEARS N 45' W, 10.7' WITH HEALED BLAZE AND SIGNS (1991) (SET CHAINING NAIL AT SIDE CENTER, BT SIGNS ON FRONT AND REAR, AND PAINTED RED BAND FOR EXISTING BT'S)

ESTABLISHED THE FOLLOWING: A 23" CEDAR BEARS N 21' W, 30.3' MKD: C 1/4 S15 BT A 7" FIR BEARS S 73' E, 18.6' MKD: C 1/4 S15 BT (SET CHAINING NAIL AT SIDE CENTER, BT SIGNS ON FRONT AND BACK AND PAINTED RED BAND FOR NEW BT)

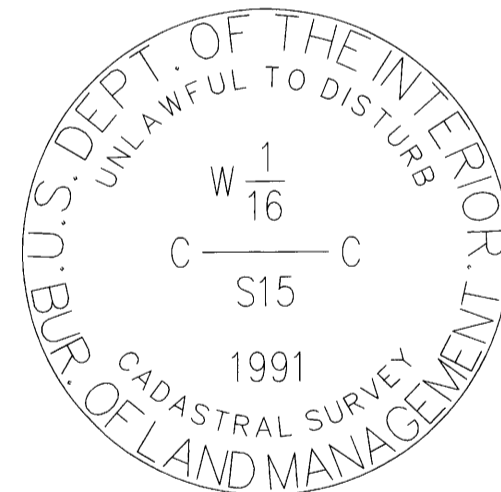
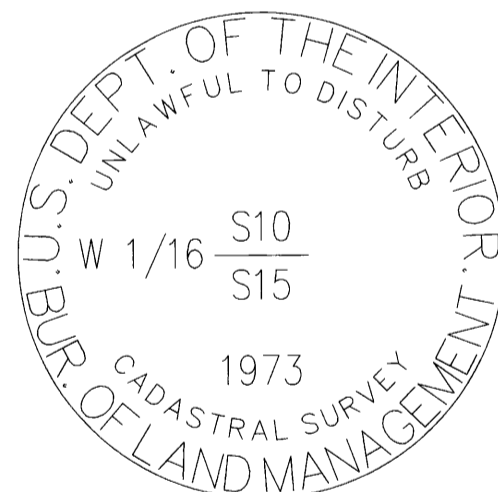
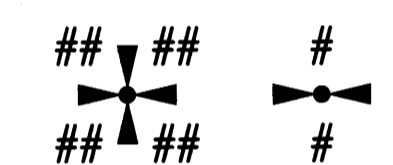


RECORD OF SURVEY

LOCATED IN A PORTION OF GOV'T LOTS 3 & 4 IN THE NW 1/4 OF SECTION 11 THE SW 1/4, SE 1/4 OF THE SE 1/4 OF SECTION 11 THE NE 1/4, SE 1/4 OF THE NW 1/4 OF SECTION 15 T. 24 S., R. 6 W., W.M. MEAN MUSTARD & GALAGHER CANYON 1-TASK A DOUGLAS COUNTY, OREGON CONTRACT NO. 1204T020D0010 TASK ORDER NO. 140L4322F0063

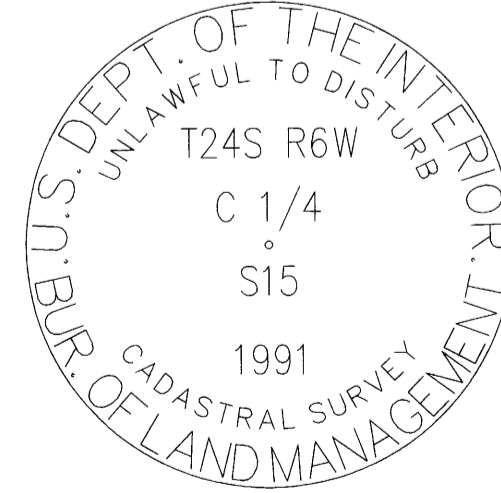
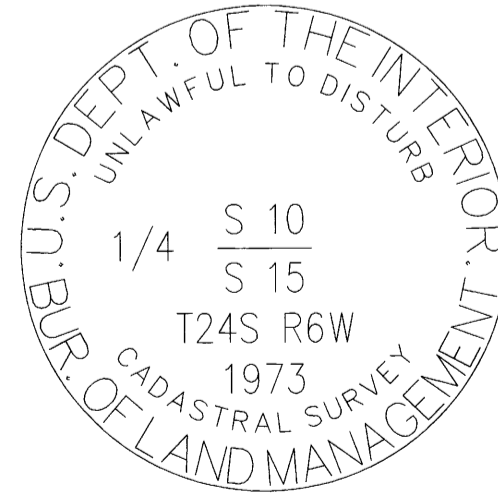
- LEGEND:
• INDICATES MONUMENT FOUND AS NOTED IN TABLES
○ INDICATES 5/8" X 30" REBAR WITH 2" ALUMINUM CAP, SET SEE MONUMENT DETAILS SHEET 2
△ INDICATES MGS CONTROL POINT SEE CONTROL TABLE, SHEET 1
(S#) INDICATES RECORD DATA PER SURVEY REFERENCE NUMBER
(BLM#) INDICATES RECORD DATA PER BUREAU OF LAND MANAGEMENT NUMBER
T. INDICATES TOWNSHIP
R. INDICATES RANGE
SEC. INDICATES SECTION
GLO. INDICATES GENERAL LAND OFFICE
BT INDICATES BEARING TREE
CH INDICATES CHAINS (1 CHAIN=66 FEET)
LKS INDICATES LINKS (1 LINK=0.66 FEET)
W/ INDICATES WITH
RPC INDICATES RED PLASTIC CAP
ALUM. INDICATES ALUMINUM
CONT. INDICATES CONTINUED
N.O.L. INDICATES NORTH OF LINE
E.O.L. INDICATES EAST OF LINE
S.O.L. INDICATES SOUTH OF LINE
W.O.L. INDICATES WEST OF LINE
--- INDICATES BOUNDARY LINE, MARKED AND POSTED
--- INDICATES SECTION SUBDIVISION
---CRK--- INDICATES CENTERLINE OF CREEK
--- -- -- INDICATES CENTERLINE OF ROAD
---x---x--- INDICATES FENCE LINE

PLSS CORNERS



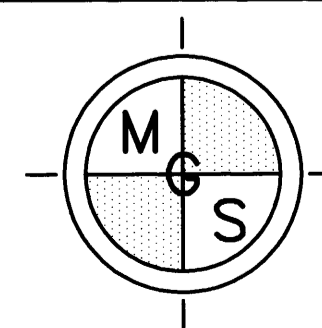
POINT NUMBER: 202

POINT NUMBER: 203



POINT NUMBER: 204

POINT NUMBER: 205



MINISTER-GLAESER SURVEYING INC. 2200 E. EVERGREEN BLVD. VANCOUVER, WA 98661 (360) 694-3313

FILED DATE 2-11-2024 BY: RB THIS SURVEY CONSISTS OF: MAP: M185-5 A-D NARRATIVE: CORNER RPT: DOUGLAS COUNTY SURVEYOR

SCALE: 1"=300' JOB NO. 22-319 DATE: 2/29/2024 CALC BY: DAR DRAWN BY: RDH CHECKED BY: DAR SHEET 3 OF 4