

200-FOUND MONUMENT

CORNER A-7, (GCDB 240700) 1/4 CORNER OF SECTION 5 T. 24 S., R. 06 W., W.M. AND SECTION 32 T. 23 S., R. 06 W., W.M.

APRIL 7, 1853 ORIGINAL CORNER BY ROBERT ELDER AND HENRY GILE, DEPUTY SURVEYORS UNDER CONTRACT NO. 31 (DCSO RECORDS VOLUME 6, PAGE 2389) SET 1/4 SECTION POST FROM WHICH: A FIR 7" DIA., BEARS N 3° W, 32 LKS. A FIR 9" DIA., BEARS S 3° W, 31 LKS.

JULY 18, 1891 GLO SURVEY BY WILLIAM R. WHIPPLE, DEPUTY SURVEYOR UNDER CONTRACT NO. 577 (DCSO RECORDS VOLUME 8, PAGES 3180-81) THE 1/4 SECTION CORNER, POST GONE, REESTABLISH SAME BY SETTING A FIR POST, 4 FT LONG, 4" SQUARE, 24" IN THE GROUND, FOR 1/4 SECTION CORNER MKD: 1/4 S ON NORTH FACE, FROM WHICH: STUMP OR ORIGINAL BEARING TREE, BEARS S 3° W, 31 LKS. DIST. NO TRACE OF OTHER BEARING TREE TO BE SEEN EXCEPT THAT THERE IS SOME ROTTEN WOOD LYING WHERE IT STOOD. MARKED NEW BEARING TREES AS FOLLOWS: A FIR 60" DIA., BEARS N 48°45' E, 56 LKS. DIST. MKD: 1/4 S BT A FIR 20" DIA., BEARS S 68°45' E, 57 LKS. DIST. MKD: 1/4 S BT

JUNE 1943 - OCTOBER 1957 BLM RESURVEY BY OTIS GOULD, JOSEPH GAWRON AND ORVILLE EGGEN, CADASTRAL SURVEYORS UNDER GROUP NO. 244 (DCSO RECORDS VOLUME 30, PAGE 12647) 1/4 SECTION CORNER DETERMINED AT RECORD BEARING AND DISTANCE FROM REMAINS OF THE ORIGINAL BEARING TREES: A FIR STUMP 56" DIA., BEARS N 48° E, 59 LKS. DIST. MKD: 1/4 S32 BT A FIR 30" DIA., BEARS S 72° E, 59 LKS. DIST. MKD: 1/4 S5 AT THE CORNER POINT, SET AN IRON POST, 3 FT LONG, 2" DIA., 27" IN THE GROUND AND IN A MOUND OF STONE, 3 FT BASE, TO TOP, WITH BRASS CAP MKD: T23S R6W 1/4 S32 S5 T24S 1957 FROM WHICH: A HEMLOCK 10" DIA., BEARS N 58° W, 11-1/2 LKS. DIST. MKD: 1/4 S32 BT A FIR 16" DIA., BEARS S 61° W, 79-1/2 LKS. DIST. MKD: 1/4 S5 BT

SEPTEMBER 1, 1966 DOUGLAS COUNTY SURVEYORS OFFICE VERNON RAY TRACY, JACK HERITAGE, V. PERRON, CREW (C.S. 52/102-28) FOUND: GLO BRASS CAP MKD: T23S R6W 1/4 S32-5 T24-6W 1957 16" NOW 18" W.FIR STUMP BEARS S 61° W, 52.8 FT NEARLY HEALED BLAZES, PARTIAL SCRIBE MARKS VISIBLE. ORIGINAL NE BT IS STUMP ORIGINAL SE BT, TURNED OUT NEW BT'S: 9" HEMLOCK S 40-1/2° E, 30.8 FT MKD: 1/4 S5 CS BT 10" D.FIR N 38° W, 86.5 FT MKD: 1/4 S32 CS BT CORNER LIES IN OLD, LOGGED-OFF UNIT

JUNE 9, 1986 - AUGUST 22, 1995 BLM CORRECTIVE DEPENDENT RESURVEY BY WAYNE L. ROGERS, BOYD W. PETERSON, PHILIP G. GRIFFIN, DALE T. BEDELL, CADASTRAL SURVEYORS AND ROBERT H. BROWNING, SURVEYING TECHNICIAN UNDER GROUP NO. 1266 (DCSO RECORDS VOLUME 51, PAGES 19450-51) THE 1/4 SECTION CORNER OF SECTION 5 AND 32, MONUMENTED WITH AN IRON POST, 2" DIA., FIRMLY SET, PROJECTING 4" ABOVE A MOUND OF STONE, 3 FT BASE, TO TOP, WITH BRASS CAP MKD: T23S R6W 1/4 S32 S5 T24S R6W 1957 FROM WHICH THE REMAINS OF BEARING TREES MKD. BY WHIPPLE: A SAWED FIR STUMP, 66" DIA., BEARS N 48° E, 59 LKS. DIST. WITH KNIFE MARKS 1/4 S VISIBLE ON OPEN BLAZE FACING SOUTH A ROTHOLE, BEARS S 72° E, 59 LKS. DIST. ALONGSIDE OF WHICH IS LYING A FIR, 30" DIA., NO MARKS VISIBLE ON OPEN BLAZE AND A BEARING TREE MKD. BY GOULD, GAWRON AND EGGEN: A HEMLOCK, 28" DIA., BEARS S 61° W, 79-1/2 LKS. DIST. WITH HEALED DOUBLE BLAZE (RECORD, FIR) AND BEARING TREES MKD BY VERNON TRACY, DEPUTY COUNTY SURVEYOR IN 1966, AS INDICATED IN GOVERNMENT CORNER RENEWAL NO. 55: A HEMLOCK 18" DIA., BEARS S 40-1/2° E, 46-1/2 LKS. DIST. WITH HEALED BLAZE A ROOTWAD, BEARS N 38° W, 131 LKS. DIST. ALONGSIDE OF WHICH IS LYING A ROTTED FIR LOG, 10" DIA., WITH FRAGMENTARY SCRIBE MARKS VISIBLE ON ROTTED BLAZE AND A NEW BEARING TREE: A FIR, 10" DIA., BEARS N 41° W, 12 LKS. DIST. MKD: 1/4 S32 BT

JUNE 2010 ROBERT B. WARD JR., RON RICE AND JOSH REED, CREW (C.S. FILE 65/69-25) FOUND BLM BRASS CAP (PROPERLY MARKED) DATED 1957 WITH THE FOLLOWING ACCESSORIES: A 66" FIR STUMP BEARS N 48° E, 38.9' HEALED FACE A 34" W.FIR BEARS S 61° W, 52.5' HEALED FACE (BLM REPORTED HEMLOCK) A 20" HEMLOCK BEARS S 40-1/2° E, 30.7' HEALED FACE

AUGUST 1, 2023 GARRETT FINCH AND CREW WITH MINISTER AND GLAESER SURVEYING FOUND 3-1/4" GLO BRASS CAP, 0.9" ABOVE GROUND WITH MOUND OF STONE FROM WHICH: A 13" FIR BEARS N 41° W, 7.7 FT WITH HEALED BLAZE AND BT SIGN (1993) A 17" FIR BEARS N 22° E, 8.7 FT WITH HEALED BLAZE AND BT SIGN (NO RECORD) A 19" SNAG BEARS S 42° E, 30.7 FT WITH HEALED BLAZE AND BT SIGN (2010) A 37" HEMLOCK BEARS S 60° W, 52.5 FT WITH HEALED BLAZE AND BT SIGN (2010) A ROTHOLE BEARS S 71° E, 40.6 FT WITH 24" TRUNK ALONGSIDE WITH BLAZE (1891) A 66" STUMP (4' HIGH) BEARS N 48° E, 39.4 FT (SET CHAINING NAIL AT SIDE CENTER, BT SIGNS ON FRONT AND REAR, AND PAINTED RED BAND FOR EXISTING BT'S)

BLM REFERENCES:

- 1) (1957) BUREAU OF LAND MANAGEMENT RESURVEY AND NOTES FOR T. 23 S., R. 6 W., W.M. EXECUTED BY OTIS O. GOULD, JOSEPH S. GAWRON, ORVILLE N. EGGEN GROUP NO. #244 COMMENCED 6/1/1943 - COMPLETED 10/17/57 PLAT MAP DATED 8/24/1960 (822)

201-FOUND MONUMENT

CORNER A-5, (GCDB 200700) CORNER OF SECTIONS 5 & 6 T. 24 S., R. 06 W., W.M. AND SECTIONS 31 & 32 T. 23 S., R. 06 W., W.M.

APRIL 7, 1853 ORIGINAL CORNER BY ROBERT ELDER AND HENRY GILE, DEPUTY SURVEYORS UNDER CONTRACT NO. 31 (DCSO RECORDS VOLUME 6, PAGES 2389-90) SET POST CORNER TO SECTIONS 5, 6, 31 AND 32 FROM WHICH: A FIR 15" DIA., BEARS N 22° E, 53 LKS. DIST. MKD: T23S R6W S32 BT A FIR 16" DIA., BEARS N 62° W, 60 LKS. DIST. MKD: T23S R6W S31 BT A FIR 10" DIA., BEARS S 57° W, 8 LKS. DIST. MKD: T24S R6W S6 BT A FIR 10" DIA., BEARS S 47° E, 10 LKS. DIST. MKD: T24S R6W S5 BT

JUNE 1883 GLO SURVEY BY JOHN MCQUINN UNDER CONTRACT NO. 466 FOUND A 4" SQUARE POST SET FIRMLY IN GROUND MKD T23S S32 ON NE, R6W S5 ON SE, T24S S6 ON SW, AND T31 ON NW FACES WITH 5 NOTCHES ON EAST AND 1 NOTCH ON WEST EDGES FROM WHICH: A FIR 15" DIA., BEARS N 22° E, 53 LKS. DIST. MKD: T23S R6W S32 BT A FIR 16" DIA., BEARS N 62° W, 60 LKS. DIST. MKD: T23S R6W S31 BT A FIR 10" DIA., BEARS S 57° W, 8 LKS. DIST. MKD: T24S R6W S6 BT A FIR 10" DIA., BEARS S 47° E, 10 LKS. DIST. MKD: T24S R6W S5 BT

JULY 18, 1891 GLO SURVEY BY WILLIAM R. WHIPPLE, DEPUTY SURVEYOR UNDER CONTRACT NO. 577 (DCSO RECORDS VOLUME 8, PAGE 3180) (FOUND OK ON PAGES 3190-91) THE SECTION CORNER, I REESTABLISHED BY SETTING A CEDAR POST, 4' LONG, 4" SQUARE, 24" IN THE GROUND MKD. T23S S32 ON NE, T24S S5 ON SE, R6W S6 ON SW, AND S31 ON NW FACE WITH 6 NOTCHES ON S AND 5 NOTCHES ON E EDGES, FROM WHICH ORIGINAL BEARING TREES: A FIR 15" DIA., BEARS N 22° E, 53 LKS. DIST. MKD: T23S R6W S32 BT A FIR 10" DIA., BEARS S 47° E, 10 LKS. DIST. MKD: T24S R6W S5 BT A FIR 10" DIA., BEARS S 57° W, 8 LKS. DIST. MKD: T24S R6W S6 BT A FIR 16" DIA., BEARS N 62° W, 60 LKS. DIST. MKD: T23S R6W S31 BT

JUNE 1943 - OCTOBER 1957 BLM RESURVEY BY OTIS GOULD, JOSEPH GAWRON AND ORVILLE EGGEN, CADASTRAL SURVEYORS UNDER GROUP NO. 244 (DCSO RECORDS VOLUME 30, PAGE 12648) THE SECTION CORNER, DETERMINED AT RECORD BEARING AND DISTANCES FROM THE ONLY REMAINING BEARING TREE: A FIR 24" DIA., BEARS N 22° E, 53 LKS. DIST. MKD. BT ON OPEN BLAZE AT THE CORNER POINT, SET AN IRON POST, 3' LONG, 2" DIA., 30" IN THE GROUND, AND IN A MOUND OF STONE, 3' BASE, TO TOP, WITH BRASS CAP MKD: T23S R6W S31 S32 S5 S6 T24S 1957 FROM WHICH: A HEMLOCK 12" DIA., BEARS S 63° E, 35 LKS. DIST. MKD: T24S R6W S5 BT A HEMLOCK 8" DIA., BEARS S 3° W, 17 LKS. DIST. MKD: T24S R6W S6 BT A FIR 30" DIA., BEARS N 74° W, 57 LKS. DIST. MKD: T23S R6W S31 BT

JUNE 9, 1986 - AUGUST 22, 1995 BLM CORRECTIVE DEPENDENT RESURVEY BY WAYNE L. ROGERS, BOYD W. PETERSON, PHILIP G. GRIFFIN, DALE T. BEDELL, CADASTRAL SURVEYORS AND ROBERT H. BROWNING, SURVEYING TECHNICIAN UNDER GROUP NO. 1266 (DCSO RECORDS VOLUME 51, PAGE 19451) FOUND AND USED

DECEMBER 4, 1996 MARK SMALLY FOR ROSEBURG FOREST PRODUCTS (C.S. 65/15-6F) FOUND: 1957 GLO I.P.B.C. A 16" HEMLOCK, BEARS S 3° W, 17 LKS. GOOD SCRIBE VISIBLE A 40" FIR, BEARS S 74° W, 57 LKS. GOOD HEALED FACE (DIAGRAM SHOWS AND REC IS NW NOT SW, ADDED 6/14/2010). A 16" HEMLOCK, BEARS S 63° E, 35 LKS. FAIR VISIBLE SCRIBE A 27" FIR, BEARS N 22° E, 53 LKS., POOR, VISIBLE SCRIBE NEW ACCESSORIES: AN 8" HEMLOCK, BEARS S 74° W, 25.1' SCRIBED: S6 BT AN 11" HEMLOCK, BEARS S 7° W, 20.9' SCRIBED: S6 BT

JUNE 2010 ROBERT WARD, RON RICE AND JOSH REED, CREW (C.S. FILE 65/69-30) FOUND BLM BRASS CAP (PROPERLY MARKED) DATED 1957 WITH THE FOLLOWING ACCESSORIES: A 30" FIR, BEARS N 22° E, 35.0' OPEN FACE AN 18" HEMLOCK, BEARS S 63° E, 23.1' HEALED FACE BLOW DOWN A 17" HEMLOCK, BEARS S 30° W, 11.2' ROTTED FACE A 40" FIR, BEARS N 74° W, 37.6' HEALED FACE A 13" HEMLOCK, BEARS S 20° W, 20.6' HEALED FACE

JANUARY 2016 RONALD L. RICE AND CODY KIEVIT (C.S. FILE 65/93-6) FOUND BLM BRASS CAP DATED 1957 A 17" HEMLOCK STUMP, BEARS S 30° W, 11.2' ROTTED FACE A 40" D.FIR METAL CAPPED STUMP, BEARS N 74° W, 37.6' HEALED FACE A 13" HEMLOCK STUMP, BEARS S 20° W, 20.6' HEALED FACE NEW: CORNER FALLS IN RECENTLY LOGGED AREA. NO NEW ACCESSORIES ESTABLISHED. SET 60D NAIL AT SIDE CENTER OF ALL BEARING TREE STUMPS. ADDED GALVANIZED SHEET METAL CAP TO NW BEARING TREE STUMP AS NOTED ABOVE. NOTE: CORNER HAS STEEL POST ADJACENT TO IT. ALL BT'S HAVE RED PAINTED BANDS AND YELLOW TAGS. COMPASS DECLINATION 16° E

JULY 31, 2023 GARRETT FINCH AND CREW WITH MINISTER AND GLAESER SURVEYING FOUND 3-1/4" GLO BRASS CAP, 0.4" ABOVE GROUND FROM WHICH: A 19" STUMP (6' HIGH) BEARS S 30° W, 12.0 FT WITH HEALED BLAZE, BT AND ROSEBURG TIMBER SIGN AND SIDE NAIL (2010) A 12" STUMP (6' HIGH) BEARS S 18° W, 21.1 FT WITH HEALED BLAZE, ROSEBURG TIMBER SIGN AND SIDE NAIL (2010) A 36" STUMP (6' HIGH) BEARS N 65° W, 37.6 FT WITH HEALED BLAZE, ROSEBURG TIMBER SIGN AND METAL TOP (2016) (SET CHAINING NAIL AT SIDE CENTER, BT SIGNS ON FRONT AND REAR, AND PAINTED RED BAND FOR EXISTING BT'S)

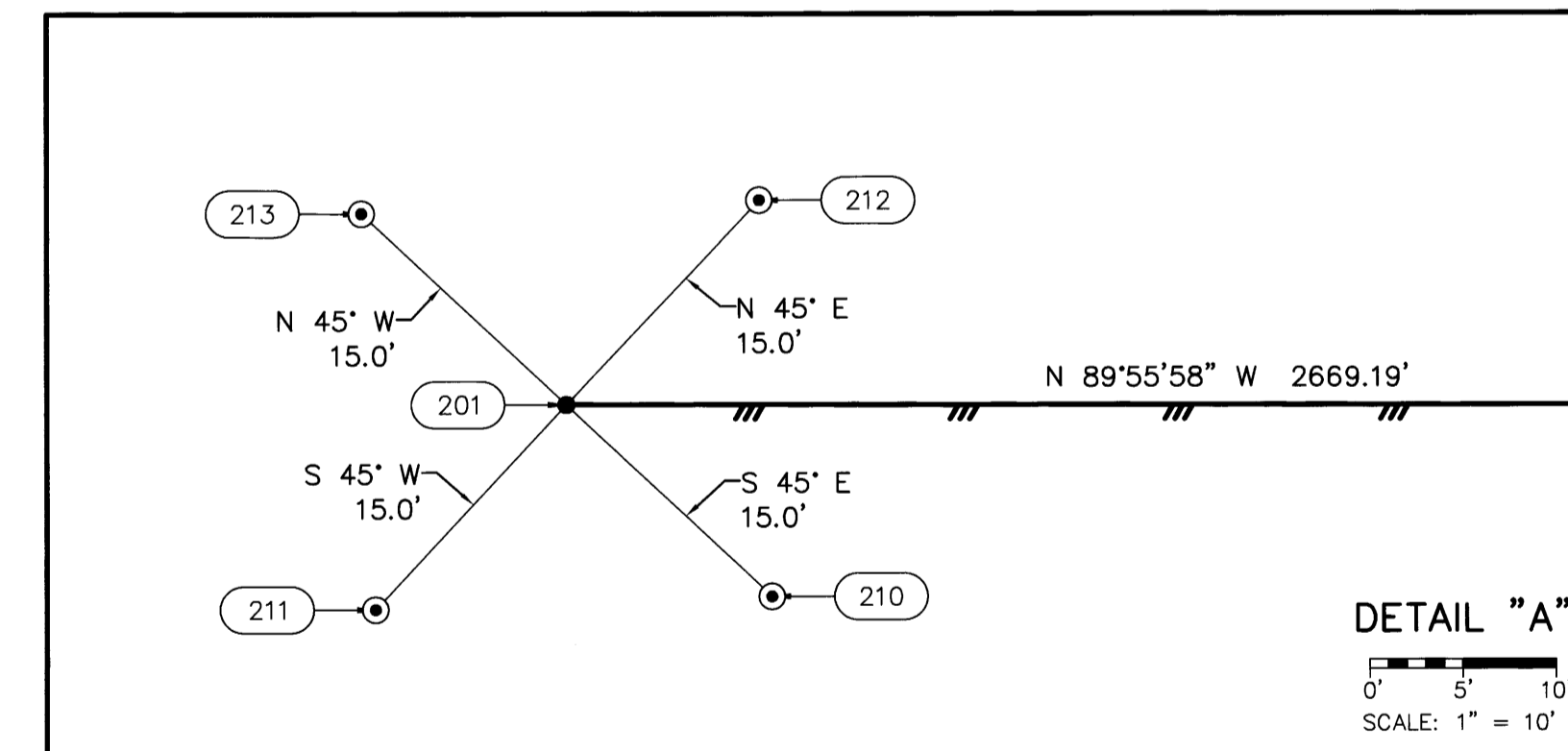
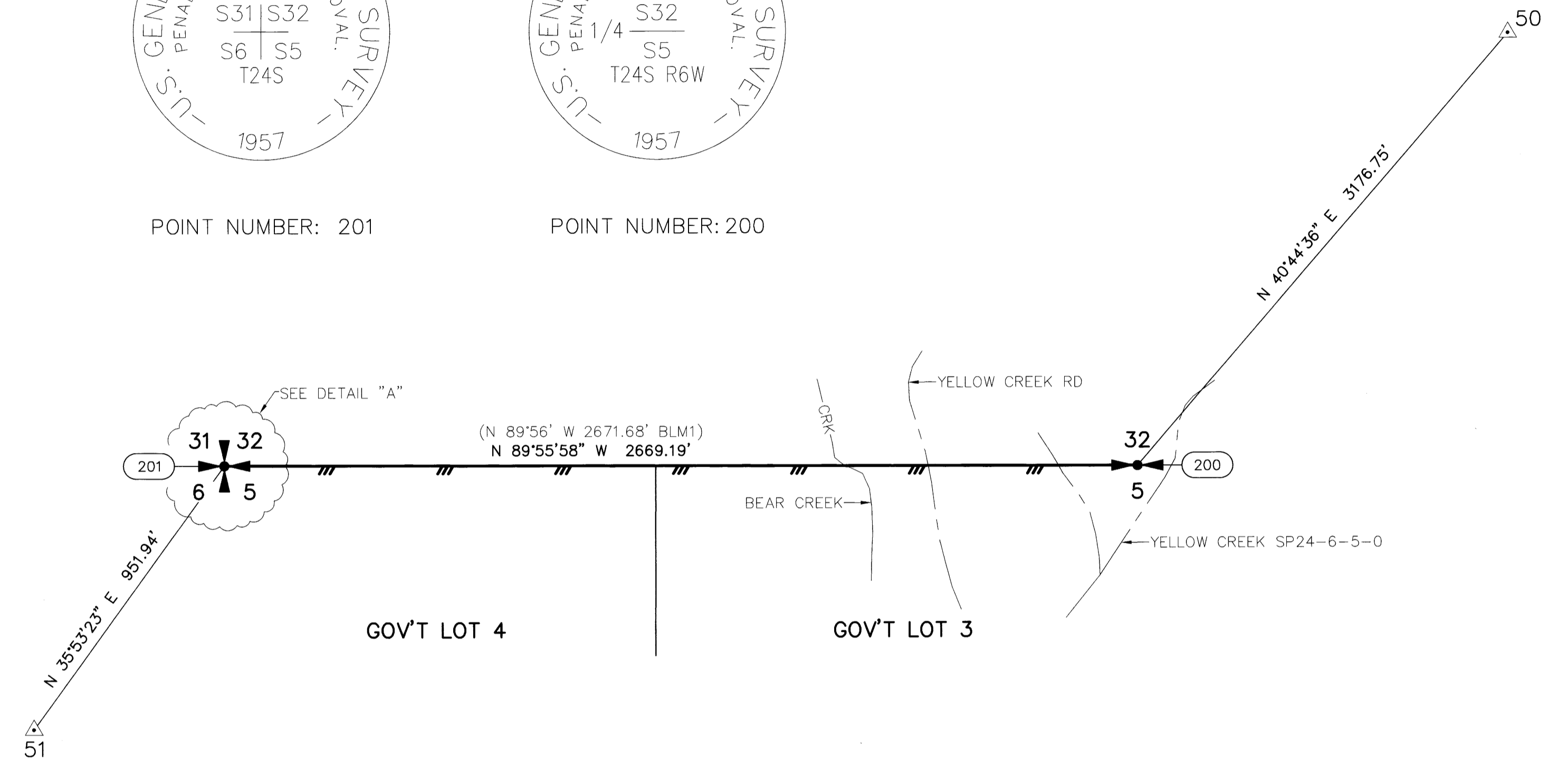
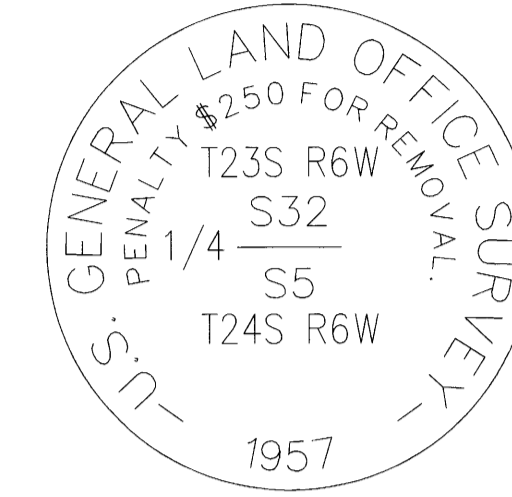
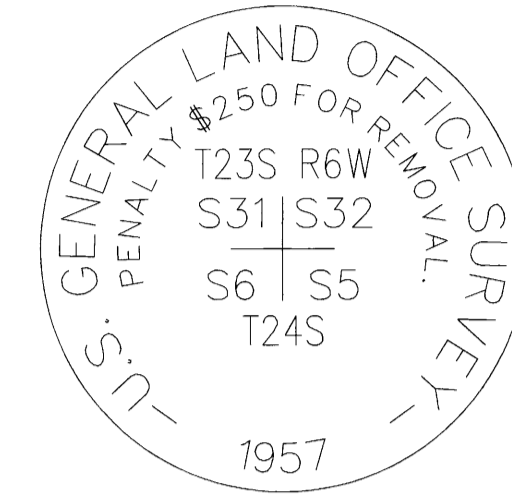
ESTABLISHED THE FOLLOWING: A 5/8" IRON ROD W/ 2" ALUMINUM CAP BEARS S 45° E, 15.0 FT A 5/8" IRON ROD W/ 2" ALUMINUM CAP BEARS S 45° W, 15.0 FT A 5/8" IRON ROD W/ 2" ALUMINUM CAP BEARS N 45° W, 15.0 FT A 5/8" IRON ROD W/ 2" ALUMINUM CAP BEARS N 45° E, 15.0 FT (SEE DETAIL "A" FOR CAP STAMPING)

RECORD OF SURVEY

LOCATED IN A PORTION OF GOV'T LOTS 3 & 4 IN THE NW 1/4 OF SECTION 5 THE SW 1/4, SE 1/4 OF THE SE 1/4 OF SECTION 11 THE NE 1/4, SE 1/4 OF THE NW 1/4 OF SECTION 15 T. 24 S., R. 6 W., W.M. MEAN MUSTARD & GALLAGHER CANYON 1-TASK A DOUGLAS COUNTY, OREGON CONTRACT NO. 1204T020D0010 TASK ORDER NO. 140L4322F0063

FILED DATE: 9-11-2024 BY: [Signature] THIS SURVEY CONSISTS OF: MAP: M185-5 A-D NARRATIVE: CORNER RPT: DOUGLAS COUNTY SURVEYOR

MONUMENT TABLE with columns: POINT NO., NORTHING, EASTING, DESCRIPTION. Rows for points 200 and 201.



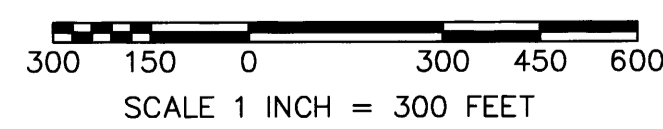
POINT NUMBER: 210

POINT NUMBER: 211



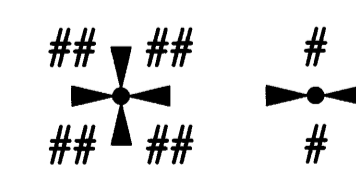
POINT NUMBER: 212

POINT NUMBER: 213



- LEGEND: INDICATES MONUMENT FOUND AS NOTED IN TABLES, INDICATES 5/8" X 30" REBAR WITH 2" ALUMINUM CAP, SEE MONUMENT DETAILS SHEET 2, INDICATES MGS CONTROL POINT, SEE CONTROL TABLE, SHEET 1, (S#) INDICATES RECORD DATA PER SURVEY REFERENCE NUMBER, (BLM#) INDICATES RECORD DATA PER BUREAU OF LAND MANAGEMENT NUMBER, T. INDICATES TOWNSHIP, R. INDICATES RANGE, SEC. INDICATES SECTION, GLO INDICATES GENERAL LAND OFFICE, BT INDICATES BEARING TREE, CH INDICATES CHAINS (1 CHAIN=66 FEET), LKS INDICATES LINKS (1 LINK=0.66 FEET), W/ INDICATES WITH, RPC INDICATES RED PLASTIC CAP, ALUM. INDICATES ALUMINUM, CONT. INDICATES CONTINUED, N.O.L. INDICATES NORTH OF LINE, E.O.L. INDICATES EAST OF LINE, S.O.L. INDICATES SOUTH OF LINE, W.O.L. INDICATES WEST OF LINE, --- INDICATES BOUNDARY LINE, MARKED AND POSTED, --- INDICATES SECTION SUBDIVISION, ---CRK--- INDICATES CENTERLINE OF CREEK, --- INDICATES CENTERLINE OF ROAD, ---x---x--- INDICATES FENCE LINE

PLSS CORNERS



Minister-Glaeser Surveying Inc. logo and contact information: 2200 E. EVERGREEN BLVD. VANCOUVER, WA 98661 (360) 694-3313. Includes scale: 1"=300', job no. 22-319, date 2/29/2024, and drawing details.