

NARRATIVE:

THE PURPOSE OF THIS SURVEY WAS TO FULFILL THE CONTRACT (1204T020D0010/140L4322F0063) REQUIREMENTS FOR MEAN MUSTARD & GALLAGHER CANYON – TASK A CADASTRAL SURVEY AS LISTED BELOW:

- SECTION 5, T. 24 S., R. 6 W., W.M.
- SECTION 11, T. 24 S., R. 6 W., W.M.
- SECTION 15, T. 24 S., R. 6 W., W.M.

DOUGLAS COUNTY, OREGON

LOCATION OF PROJECT:

THIS PROJECT IS LOCATED APPROXIMATELY 7 MILES SOUTHWEST OF RICE HILL, DOUGLAS COUNTY, OREGON.

GENERAL NOTES:

THIS CONTRACT IS FOR BOUNDARY LINE MARKING/POSTING AND BOUNDARY LINE MAINTENANCE. WE COMPLETED THE MAINTENANCE OF 10 CORNERS, AND SURVEYED AND POSTED 3.26 MILES OF BOUNDARY.

ALL BOUNDARY WORK COMPLIED WITH THE SURVEY SPECIFICATIONS AND PROCEDURES OUTLINED IN THE BUREAU OF LAND MANAGEMENT MANUAL OF SURVEYING INSTRUCTIONS (2009). ALL CORNERS WERE MAINTAINED TO THE SPECIFICATIONS CONTAINED IN SECTION C OF THE R6 2020 CADASTRAL SURVEY IDIQ STANDARDS. SURVEY AND LAND RECORDS RESEARCH WAS PERFORMED TO VERIFY THE CHAIN OF SURVEY AT EACH CORNER PRIOR TO MAINTAINING THE CORNERS AND MARKING AND POSTING THE BOUNDARIES. BOUNDARY DELINEATOR POSTS AND SIGNS (SEE EXAMPLE SIGNS BELOW) WERE SET ALONG THE BOUNDARY WHERE GAPS IN THE EXISTING POSTING ARE FOUND AND THE BOUNDARY LINE BLAZING WAS ADDED OR REFRESHED. FENCE ENCROACHMENTS WERE FOUND IN SECTIONS 11 AND 15, SEE SHEETS 3 AND 4.

THE EXISTING MONUMENTS SHOWN HEREIN WERE FOUND AT ACCEPTABLE POSITIONS, WERE MONUMENTED PROPERLY AND STANDARD CORNER MAINTENANCE WAS PERFORMED.

ALL CORNER SEARCH AND EVALUATION WAS PERFORMED BY DANIEL RENTON, PLS 2830. THE PROJECT AREA IS ACCESSED BY COUNTY ROADS, PRIVATE ROADS AND OTHER FOREST ROADS.

ALL NECESSARY SIGNS AND POSTS WERE PROVIDED BY THE BUREAU OF LAND MANAGEMENT.

THE BEARINGS SHOWN HEREIN FOR BEARING TREES WERE MEASURED USING A BRUNTON GEO TRANSIT COMPASS (MAGNETIC DECLINATION=15' EAST)

THE DISTANCES AND DIAMETERS SHOWN HEREIN FOR BEARING TREES WERE MEASURED USING A STEEL LOGGERS TAPE.

TASK AND CORNERS MAINTAINED:

SECTION 5, T. 24 S., R. 6 W., W.M.

- TIE POSITIONS, VERIFY AND MAINTAIN THE FOLLOWING CORNERS:
 - MONUMENT 200, CORNER A-7, (GCDB 240700) 1/4 CORNER OF SECTION 5 & SECTION 32
 - MONUMENT 201, CORNER A-5, (GCDB 200700) CORNER OF SECTIONS 5, 6, 31 & 32
- SURVEY LINE, MARK AND POST BOUNDARY SHOWN HEREIN

SECTION 11, T. 24 S., R. 6 W., W.M.

- TIE POSITIONS, VERIFY AND MAINTAIN THE FOLLOWING CORNERS:
 - MONUMENT 206, CORNER J-19, (GCDB 540500) 1/4 CORNER OF SECTIONS 11 & 14
 - MONUMENT 207, CORNER H-19, (GCDB 540520) C 1/4 CORNER OF SECTION 15
 - MONUMENT 208, CORNER J-21, (GCDB 600500) CORNER OF SECTIONS 11, 12, 13 & 14
 - MONUMENT 209, CORNER H-21, (GCDB 600520) S 1/16 CORNER OF SECTIONS 11 & 12
- SURVEY LINE, MARK AND POST BOUNDARY SHOWN HEREIN

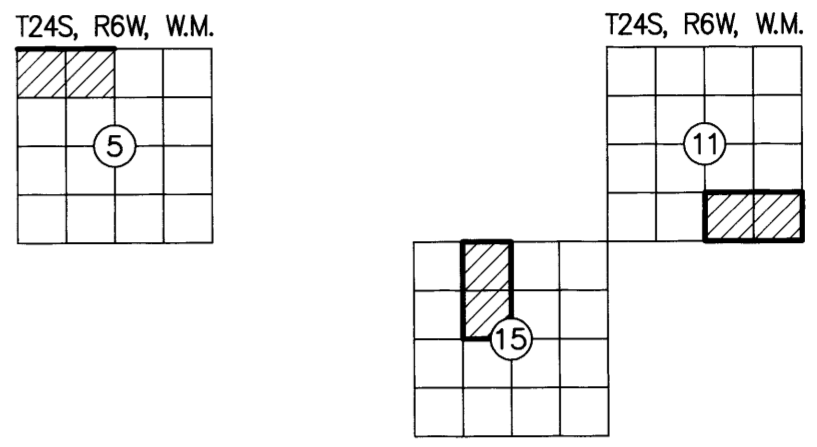
SECTION 15, T. 24 S., R. 6 W., W.M.

- TIE POSITIONS, VERIFY AND MAINTAIN THE FOLLOWING CORNERS:
 - MONUMENT 202, CORNER J-14, (GCDB 420500) W 1/16 CORNER OF SECTIONS 10 & 15
 - MONUMENT 203, CORNER L-14, (GCDB 420440) C-W 1/16 CORNER OF SECTION 15
 - MONUMENT 204, CORNER J-15, (GCDB 440500) 1/4 CORNER OF SECTIONS 10 & 15
 - MONUMENT 205, CORNER L-15, (GCDB 440440) C 1/4 CORNER OF SECTION 15
- SURVEY LINE, MARK AND POST BOUNDARY SHOWN HEREIN

RECORD OF SURVEY

FILED
DATE: 8-11-2024 BY: [Signature]
THIS SURVEY CONSISTS OF:
MAP: M185-5 A-D
NARRATIVE:
CORNER RPT:
DOUGLAS COUNTY SURVEYOR

LOCATED IN A PORTION OF
GOV'T LOTS 3 & 4 IN THE NW 1/4 OF SECTION 5
THE SW 1/4, SE 1/4 OF THE SE 1/4 OF SECTION 11
THE NE 1/4, SE 1/4 OF THE NW 1/4 OF SECTION 15
T. 24 S., R. 6 W., W.M.
MEAN MUSTARD & GALLAGHER CANYON 1-TASK A
DOUGLAS COUNTY, OREGON
CONTRACT NO. 1204T020D0010
TASK ORDER NO. 140L4322F0063



SURVEY FOR: UNITED STATES DEPARTMENT OF THE INTERIOR BUREAU OF LAND MANAGEMENT
ROSEBURG DISTRICT OFFICE
777 NW GARDEN VALLEY BLVD
ROSEBURG, OR 97471

SHEET INDEX

SHEET 1	VICINITY MAP, EQUIPMENT LIST, CONTROL DIAGRAM AND TABLE, CONTROL PROCEDURE, CERTIFICATES, REFERENCES, POSTED SIGNS, AND NARRATIVE
SHEET 2	SECTION 5 SITE DETAILS, FOUND MONUMENT COORDINATE TABLE, REFERENCES, LEGEND AND MONUMENT DETAILS
SHEET 3	SECTION 15 SITE DETAILS, FOUND MONUMENT COORDINATE TABLE, REFERENCES, LEGEND AND MONUMENT DETAILS
SHEET 4	SECTION 11 SITE DETAILS, FOUND MONUMENT COORDINATE TABLE, REFERENCES, LEGEND AND MONUMENT DETAILS

EQUIPMENT LIST:

2018 GMC SIERRA 2500HD SURVEY TRUCK
TRIMBLE R12 GNSS BASE RECEIVER
TRIMBLE R12i GNSS ROVER RECEIVER
TRIMBLE S7 3" TOTAL STATION
BRUNTON GEO TRANSIT COMPASS FOR BT'S (MAGNETIC DECLINATION=15' EAST)
TRIMBLE TDL 450HX 35-WATT RADIO
TRIMBLE TSC5 DATA COLLECTOR WITH TRIMBLE ACCESS SOFTWARE
AUTODESK CIVIL 3D 2023
TRIMBLE BUSINESS CENTER
STAR-NET LEAST SQUARES ADJUSTMENT SOFTWARE

BASIS OF BEARING: N 85°35'34" E ALONG THE CONTROL LINE BETWEEN (MGS CONTROL POINT 52) AND (MGS CONTROL POINT 54)
OREGON COORDINATE REFERENCE SYSTEM (OCRS), COTTAGE GROVE-CANYONVILLE ZONE, INTERNATIONAL FEET.

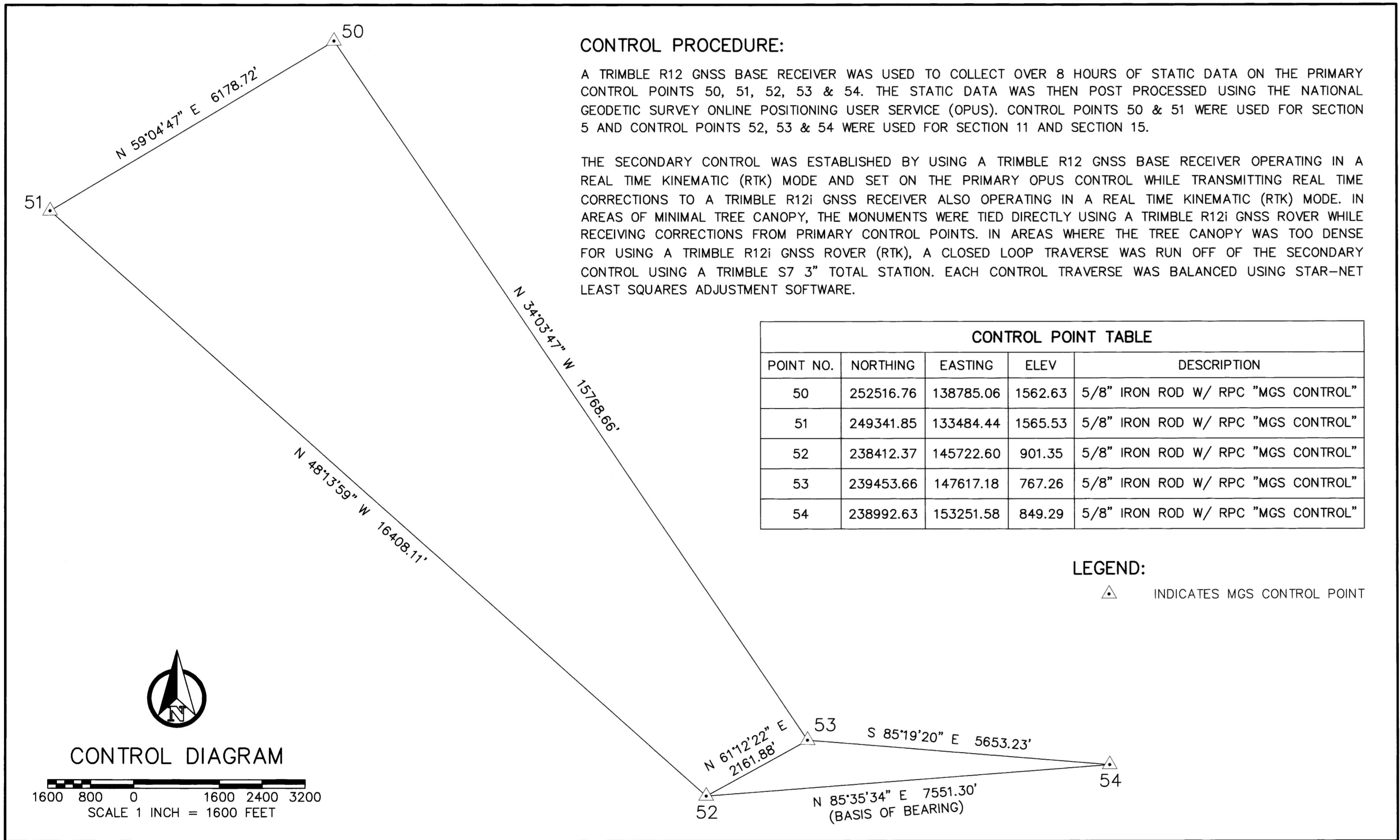
SURVEY REFERENCES:

- (2012) SWEDEN SURVEY
MAP FILE M163-27
SECTION 15, T. 24 S., R. 6 W., W.M.

BLM REFERENCES:

- (1957) BUREAU OF LAND MANAGEMENT RESURVEY AND NOTES FOR T. 23 S., R. 6 W., W.M.
EXECUTED BY OTIS O. GOULD, JOSEPH S. GAWRON, ORVILLE N. EGGEN
GROUP #244
COMMENCED 6/1/1943 – COMPLETED 10/17/57
PLAT MAP DATED 8/24/1960 (822)
- (1975) BUREAU OF LAND MANAGEMENT RESURVEY AND NOTES FOR T. 24 S., R. 6 W., W.M.
EXECUTED BY DANIEL L. BERRY, CHARLES E. AKIN, GLENN S. BAUGHMAN
GROUP #826 & #856 – CONTRACT #52500-C15-1116
COMMENCED 9/5/1973 – COMPLETED 8/19/1975
DEPENDENT RESURVEY DATED 8/18/1977 (5590)
- (1991) BUREAU OF LAND MANAGEMENT RESURVEY AND NOTES FOR T. 24 S., R. 6 W., W.M.
EXECUTED BY WAYNE L. ROGERS
GROUP #1623
COMMENCED 9/5/1991 – COMPLETED 10/2/1991
DEPENDENT RESURVEY DATED 6/27/1994 (6591)

MINISTER AND GLAESER SURVEYING, INC. MAKES NO WARRANTIES AS TO MATTERS OF UNWRITTEN TITLE SUCH AS ADVERSE POSSESSION, ACQUIESCENCE, ESTOPPEL, ETC.



CONTROL PROCEDURE:

A TRIMBLE R12 GNSS BASE RECEIVER WAS USED TO COLLECT OVER 8 HOURS OF STATIC DATA ON THE PRIMARY CONTROL POINTS 50, 51, 52, 53 & 54. THE STATIC DATA WAS THEN POST PROCESSED USING THE NATIONAL GEODETIC SURVEY ONLINE POSITIONING USER SERVICE (OPUS). CONTROL POINTS 50 & 51 WERE USED FOR SECTION 5 AND CONTROL POINTS 52, 53 & 54 WERE USED FOR SECTION 11 AND SECTION 15.

THE SECONDARY CONTROL WAS ESTABLISHED BY USING A TRIMBLE R12 GNSS BASE RECEIVER OPERATING IN A REAL TIME KINEMATIC (RTK) MODE AND SET ON THE PRIMARY OPUS CONTROL WHILE TRANSMITTING REAL TIME CORRECTIONS TO A TRIMBLE R12i GNSS RECEIVER ALSO OPERATING IN A REAL TIME KINEMATIC (RTK) MODE. IN AREAS OF MINIMAL TREE CANOPY, THE MONUMENTS WERE TIED DIRECTLY USING A TRIMBLE R12i GNSS ROVER WHILE RECEIVING CORRECTIONS FROM PRIMARY CONTROL POINTS. IN AREAS WHERE THE TREE CANOPY WAS TOO DENSE FOR USING A TRIMBLE R12i GNSS ROVER (RTK), A CLOSED LOOP TRAVERSE WAS RUN OFF OF THE SECONDARY CONTROL USING A TRIMBLE S7 3" TOTAL STATION. EACH CONTROL TRAVERSE WAS BALANCED USING STAR-NET LEAST SQUARES ADJUSTMENT SOFTWARE.

POINT NO.	NORTHING	EASTING	ELEV.	DESCRIPTION
50	252516.76	138785.06	1562.63	5/8" IRON ROD W/ RPC "MGS CONTROL"
51	249341.85	133484.44	1565.53	5/8" IRON ROD W/ RPC "MGS CONTROL"
52	238412.37	145722.60	901.35	5/8" IRON ROD W/ RPC "MGS CONTROL"
53	239453.66	147617.18	767.26	5/8" IRON ROD W/ RPC "MGS CONTROL"
54	238992.63	153251.58	849.29	5/8" IRON ROD W/ RPC "MGS CONTROL"

LEGEND:

△ INDICATES MGS CONTROL POINT

LAND SURVEY MONUMENT

PLEASE DO NOT DISTURB

THIS MONUMENT WAS LOCATED AS PART OF AN OFFICIAL LAND SURVEY. IT HELPS DEFINE LAND OWNERSHIP LINES.

FOR FURTHER INFORMATION CONTACT THE BUREAU OF LAND MANAGEMENT

UNITED STATES DEPARTMENT OF THE INTERIOR
BUREAU OF LAND MANAGEMENT

BOUNDARY

NO TIMBER MAY BE CUT OR REMOVED WITHOUT AUTHORIZATION

T. R. SEC. LINE IS APPROX. FT.
CORNER IS APPROX. FT.

POSTED BY DATE

BLM OFFICE IS LOCATED AT

UNITED STATES DEPARTMENT OF THE INTERIOR
BUREAU OF LAND MANAGEMENT

BEARING TREE

IT IS UNLAWFUL TO DESTROY, DEFACE, CHANGE OR REMOVE ANY CORNER OF THE PUBLIC LAND SURVEYS OR TO CUT DOWN OR DEFACE ANY BEARING TREE PERTAINING TO SUCH SURVEYS.

CORNER IS APPROXIMATELY DISTANCE DIRECTION

T. R. SEC. POSTED BY DATE

REGISTERED PROFESSIONAL LAND SURVEYOR

[Signature]
OREGON
JUNE 30, 1997
DANIEL A. RENTON
2830
Expires 12-31-2024

MINISTER-GLAESER SURVEYING INC.

2200 E. EVERGREEN BLVD.
VANCOUVER, WA 98661
(360) 694-3313

SCALE: 1"=1600'
JOB NO. 22-319
DATE: 2/29/2024
CALC BY: DAR
DRAWN BY: RDH
CHECKED BY: DAR
SHEET 1 OF 4