

NARRATIVE:

THE PURPOSE OF THIS SURVEY WAS TO FULFILL THE CONTRACT (1204T020D0010/140L4322F0063) REQUIREMENTS FOR MEAN MUSTARD & GALLAGHER CANYON – TASK A CADASTRAL SURVEY AS LISTED BELOW:

- SECTION 5, T. 24 S., R. 6 W., W.M.
- SECTION 11, T. 24 S., R. 6 W., W.M.
- SECTION 15, T. 24 S., R. 6 W., W.M.

LOCATION OF PROJECT:
THIS PROJECT IS LOCATED APPROXIMATELY 7 MILES SOUTHWEST OF RICE HILL, DOUGLAS COUNTY, OREGON.

GENERAL NOTES:
THIS CONTRACT IS FOR BOUNDARY LINE MARKING/POSTING AND BOUNDARY LINE MAINTENANCE. WE COMPLETED THE MAINTENANCE OF 10 CORNERS, AND SURVEYED AND POSTED 3.26 MILES OF BOUNDARY.
ALL BOUNDARY WORK COMPLIED WITH THE SURVEY SPECIFICATIONS AND PROCEDURES OUTLINED IN THE BUREAU OF LAND MANAGEMENT MANUAL OF SURVEYING INSTRUCTIONS (2009). ALL CORNERS WERE MAINTAINED TO THE SPECIFICATIONS CONTAINED IN SECTION C OF THE R6 2020 CADASTRAL SURVEY IDIQ STANDARDS. SURVEY AND LAND RECORDS RESEARCH WAS PERFORMED TO VERIFY THE CHAIN OF SURVEY AT EACH CORNER PRIOR TO MAINTAINING THE CORNERS AND MARKING AND POSTING THE BOUNDARIES. BOUNDARY DELINEATOR POSTS AND SIGNS (SEE EXAMPLE SIGNS BELOW) WERE SET ALONG THE BOUNDARY WHERE GAPS IN THE EXISTING POSTING ARE FOUND AND THE BOUNDARY LINE BLAZING WAS ADDED OR REFRESHED. FENCE ENCROACHMENTS WERE FOUND IN SECTIONS 11 AND 15, SEE SHEETS 3 AND 4.

THE EXISTING MONUMENTS SHOWN HEREIN WERE FOUND AT ACCEPTABLE POSITIONS, WERE MONUMENTED PROPERLY AND STANDARD CORNER MAINTENANCE WAS PERFORMED.

ALL CORNER SEARCH AND EVALUATION WAS PERFORMED BY DANIEL RENTON, PLS 2830. THE PROJECT AREA IS ACCESSED BY COUNTY ROADS, PRIVATE ROADS AND OTHER FOREST ROADS.

ALL NECESSARY SIGNS AND POSTS WERE PROVIDED BY THE BUREAU OF LAND MANAGEMENT.

THE BEARINGS SHOWN HEREIN FOR BEARING TREES WERE MEASURED USING A BRUNTON GEO TRANSIT COMPASS (MAGNETIC DECLINATION=15' EAST)

THE DISTANCES AND DIAMETERS SHOWN HEREIN FOR BEARING TREES WERE MEASURED USING A STEEL LOGGERS TAPE.

TASK AND CORNERS MAINTAINED:

- SECTION 5, T. 24 S., R. 6 W., W.M.
- TIE POSITIONS, VERIFY AND MAINTAIN THE FOLLOWING CORNERS:
MONUMENT 200, CORNER A-7, (GCDB 240700) 1/4 CORNER OF SECTION 5 & SECTION 32
MONUMENT 201, CORNER A-5, (GCDB 200700) CORNER OF SECTIONS 5, 6, 31 & 32
- SURVEY LINE, MARK AND POST BOUNDARY SHOWN HEREIN

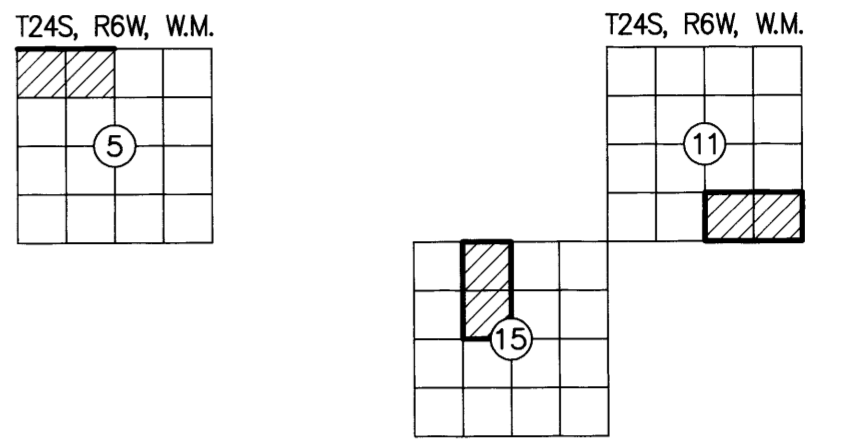
- SECTION 11, T. 24 S., R. 6 W., W.M.
- TIE POSITIONS, VERIFY AND MAINTAIN THE FOLLOWING CORNERS:
MONUMENT 206, CORNER J-19, (GCDB 540500) 1/4 CORNER OF SECTIONS 11 & 14
MONUMENT 207, CORNER H-19, (GCDB 540520) C 1/4 CORNER OF SECTION 15
MONUMENT 208, CORNER J-21, (GCDB 600500) CORNER OF SECTIONS 11, 12, 13 & 14
MONUMENT 209, CORNER H-21, (GCDB 600520) S 1/16 CORNER OF SECTIONS 11 & 12
- SURVEY LINE, MARK AND POST BOUNDARY SHOWN HEREIN

- SECTION 15, T. 24 S., R. 6 W., W.M.
- TIE POSITIONS, VERIFY AND MAINTAIN THE FOLLOWING CORNERS:
MONUMENT 202, CORNER J-14, (GCDB 420500) W 1/16 CORNER OF SECTIONS 10 & 15
MONUMENT 203, CORNER L-14, (GCDB 420440) C-W 1/16 CORNER OF SECTION 15
MONUMENT 204, CORNER J-15, (GCDB 440500) 1/4 CORNER OF SECTIONS 10 & 15
MONUMENT 205, CORNER L-15, (GCDB 440440) C 1/4 CORNER OF SECTION 15
- SURVEY LINE, MARK AND POST BOUNDARY SHOWN HEREIN

RECORD OF SURVEY

FILED
DATE: 8-11-2024 BY: [Signature]
THIS SURVEY CONSISTS OF:
MAP: M185-5 A-D
NARRATIVE:
CORNER RPT:
DOUGLAS COUNTY SURVEYOR

LOCATED IN A PORTION OF
GOV'T LOTS 3 & 4 IN THE NW 1/4 OF SECTION 5
THE SW 1/4, SE 1/4 OF THE SE 1/4 OF SECTION 11
THE NE 1/4, SE 1/4 OF THE NW 1/4 OF SECTION 15
T. 24 S., R. 6 W., W.M.
MEAN MUSTARD & GALLAGHER CANYON 1-TASK A
DOUGLAS COUNTY, OREGON
CONTRACT NO. 1204T020D0010
TASK ORDER NO. 140L4322F0063



SURVEY FOR: UNITED STATES DEPARTMENT OF THE INTERIOR BUREAU OF LAND MANAGEMENT
ROSEBURG DISTRICT OFFICE
777 NW GARDEN VALLEY BLVD
ROSEBURG, OR 97471

SHEET INDEX

SHEET 1	VICINITY MAP, EQUIPMENT LIST, CONTROL DIAGRAM AND TABLE, CONTROL PROCEDURE, CERTIFICATES, REFERENCES, POSTED SIGNS, AND NARRATIVE
SHEET 2	SECTION 5 SITE DETAILS, FOUND MONUMENT COORDINATE TABLE, REFERENCES, LEGEND AND MONUMENT DETAILS
SHEET 3	SECTION 15 SITE DETAILS, FOUND MONUMENT COORDINATE TABLE, REFERENCES, LEGEND AND MONUMENT DETAILS
SHEET 4	SECTION 11 SITE DETAILS, FOUND MONUMENT COORDINATE TABLE, REFERENCES, LEGEND AND MONUMENT DETAILS

EQUIPMENT LIST:

- 2018 GMC SIERRA 2500HD SURVEY TRUCK
- TRIMBLE R12 GNSS BASE RECEIVER
- TRIMBLE R12i GNSS ROVER RECEIVER
- TRIMBLE S7 3" TOTAL STATION
- BRUNTON GEO TRANSIT COMPASS FOR BT'S (MAGNETIC DECLINATION=15' EAST)
- TRIMBLE TDL 450HX 35-WATT RADIO
- TRIMBLE TSC5 DATA COLLECTOR WITH TRIMBLE ACCESS SOFTWARE
- AUTODESK CIVIL 3D 2023
- TRIMBLE BUSINESS CENTER
- STAR-NET LEAST SQUARES ADJUSTMENT SOFTWARE

BASIS OF BEARING: N 85°35'34" E ALONG THE CONTROL LINE BETWEEN (MGS CONTROL POINT 52) AND (MGS CONTROL POINT 54)
OREGON COORDINATE REFERENCE SYSTEM (OCRS), COTTAGE GROVE-CANYONVILLE ZONE, INTERNATIONAL FEET.

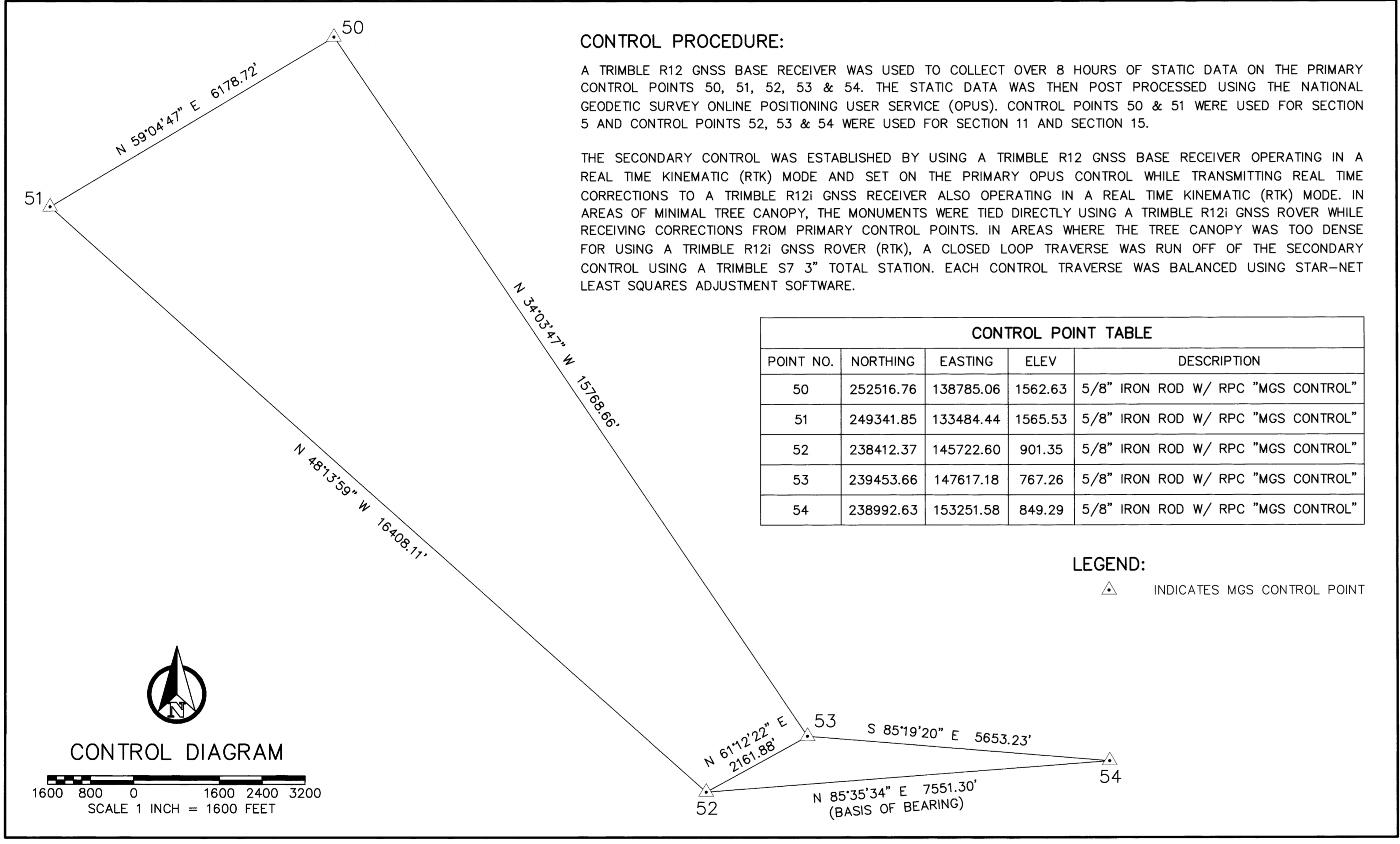
SURVEY REFERENCES:

- (2012) SWEDEN SURVEY
MAP FILE M163-27
SECTION 15, T. 24 S., R. 6 W., W.M.

BLM REFERENCES:

- (1957) BUREAU OF LAND MANAGEMENT RESURVEY AND NOTES FOR T. 23 S., R. 6 W., W.M.
EXECUTED BY OTIS O. GOULD, JOSEPH S. GAWRON, ORVILLE N. EGGEN
GROUP #244
COMMENCED 6/1/1943 - COMPLETED 10/17/57
PLAT MAP DATED 8/24/1960 (822)
- (1975) BUREAU OF LAND MANAGEMENT RESURVEY AND NOTES FOR T. 24 S., R. 6 W., W.M.
EXECUTED BY DANIEL L. BERRY, CHARLES E. AKIN, GLENN S. BAUGHMAN
GROUP #826 & #856 - CONTRACT #52500-C75-1116
COMMENCED 9/5/1973 - COMPLETED 8/19/1975
DEPENDENT RESURVEY DATED 8/18/1977 (5590)
- (1991) BUREAU OF LAND MANAGEMENT RESURVEY AND NOTES FOR T. 24 S., R. 6 W., W.M.
EXECUTED BY WAYNE L. ROGERS
GROUP #1623
COMMENCED 9/5/1991 - COMPLETED 10/2/1991
DEPENDENT RESURVEY DATED 6/27/1994 (6591)

MINISTER AND GLAESER SURVEYING, INC. MAKES NO WARRANTIES AS TO MATTERS OF UNWRITTEN TITLE SUCH AS ADVERSE POSSESSION, ACQUIESCENCE, ESTOPPEL, ETC.



CONTROL PROCEDURE:

A TRIMBLE R12 GNSS BASE RECEIVER WAS USED TO COLLECT OVER 8 HOURS OF STATIC DATA ON THE PRIMARY CONTROL POINTS 50, 51, 52, 53 & 54. THE STATIC DATA WAS THEN POST PROCESSED USING THE NATIONAL GEODETIC SURVEY ONLINE POSITIONING USER SERVICE (OPUS). CONTROL POINTS 50 & 51 WERE USED FOR SECTION 5 AND CONTROL POINTS 52, 53 & 54 WERE USED FOR SECTION 11 AND SECTION 15.

THE SECONDARY CONTROL WAS ESTABLISHED BY USING A TRIMBLE R12 GNSS BASE RECEIVER OPERATING IN A REAL TIME KINEMATIC (RTK) MODE AND SET ON THE PRIMARY OPUS CONTROL WHILE TRANSMITTING REAL TIME CORRECTIONS TO A TRIMBLE R12i GNSS RECEIVER ALSO OPERATING IN A REAL TIME KINEMATIC (RTK) MODE. IN AREAS OF MINIMAL TREE CANOPY, THE MONUMENTS WERE TIED DIRECTLY USING A TRIMBLE R12i GNSS ROVER WHILE RECEIVING CORRECTIONS FROM PRIMARY CONTROL POINTS. IN AREAS WHERE THE TREE CANOPY WAS TOO DENSE FOR USING A TRIMBLE R12i GNSS ROVER (RTK), A CLOSED LOOP TRAVERSE WAS RUN OFF OF THE SECONDARY CONTROL USING A TRIMBLE S7 3" TOTAL STATION. EACH CONTROL TRAVERSE WAS BALANCED USING STAR-NET LEAST SQUARES ADJUSTMENT SOFTWARE.

POINT NO.	NORTHING	EASTING	ELEV.	DESCRIPTION
50	252516.76	138785.06	1562.63	5/8" IRON ROD W/ RPC "MGS CONTROL"
51	249341.85	133484.44	1565.53	5/8" IRON ROD W/ RPC "MGS CONTROL"
52	238412.37	145722.60	901.35	5/8" IRON ROD W/ RPC "MGS CONTROL"
53	239453.66	147617.18	767.26	5/8" IRON ROD W/ RPC "MGS CONTROL"
54	238992.63	153251.58	849.29	5/8" IRON ROD W/ RPC "MGS CONTROL"

LEGEND:
△ INDICATES MGS CONTROL POINT

LAND SURVEY MONUMENT

PLEASE DO NOT DISTURB

THIS MONUMENT WAS LOCATED AS PART OF AN OFFICIAL LAND SURVEY. IT HELPS DEFINE LAND OWNERSHIP LINES.

FOR FURTHER INFORMATION CONTACT THE BUREAU OF LAND MANAGEMENT

UNITED STATES DEPARTMENT OF THE INTERIOR
BUREAU OF LAND MANAGEMENT

BOUNDARY

NO TIMBER MAY BE CUT OR REMOVED WITHOUT AUTHORIZATION

T. R. SEC. LINE IS APPROX. FT.
CORNER IS APPROX. FT.
POSTED BY DATE
BLM OFFICE IS LOCATED AT

UNITED STATES DEPARTMENT OF THE INTERIOR
BUREAU OF LAND MANAGEMENT

BEARING TREE

IT IS UNLAWFUL TO DESTROY, DEFACE, CHANGE OR REMOVE ANY CORNER OF THE PUBLIC LAND SURVEYS OR TO CUT DOWN OR DEFACE ANY BEARING TREE PERTAINING TO SUCH SURVEYS.

CORNER IS APPROXIMATELY DISTANCE DIRECTION
T. R. SEC. POSTED BY DATE

REGISTERED PROFESSIONAL LAND SURVEYOR

[Signature]
OREGON
JUNE 30, 1997
DANIEL A. RENTON
2830
Expires 12-31-2024

MINISTER-GLAESER SURVEYING INC.

2200 E. EVERGREEN BLVD.
VANCOUVER, WA 98661
(360) 694-3313

SCALE: 1"=1600'
JOB NO. 22-319
DATE: 2/29/2024
CALC BY: DAR
DRAWN BY: RDH
CHECKED BY: DAR
SHEET 1 OF 4

200-FOUND MONUMENT

CORNER A-7, (GCDB 240700) 1/4 CORNER OF SECTION 5 T. 24 S., R. 06 W., W.M. AND SECTION 32 T. 23 S., R. 06 W., W.M.

APRIL 7, 1853 ORIGINAL CORNER BY ROBERT ELDER AND HENRY GILE, DEPUTY SURVEYORS UNDER CONTRACT NO. 31 (DCSO RECORDS VOLUME 6, PAGE 2389) SET 1/4 SECTION POST FROM WHICH: A FIR 7" DIA., BEARS N 3° W, 32 LKS. A FIR 9" DIA., BEARS S 3° W, 31 LKS.

JULY 18, 1891 GLO SURVEY BY WILLIAM R. WHIPPLE, DEPUTY SURVEYOR UNDER CONTRACT NO. 577 (DCSO RECORDS VOLUME 8, PAGES 3180-81) THE 1/4 SECTION CORNER, POST GONE, REESTABLISH SAME BY SETTING A FIR POST, 4 FT LONG, 4" SQUARE, 24" IN THE GROUND, FOR 1/4 SECTION CORNER MKD: 1/4 S ON NORTH FACE, FROM WHICH: STUMP OR ORIGINAL BEARING TREE, BEARS S 3° W, 31 LKS. DIST. NO TRACE OF OTHER BEARING TREE TO BE SEEN EXCEPT THAT THERE IS SOME ROTTEN WOOD LYING AROUND WHERE IT STOOD. MARKED NEW BEARING TREES AS FOLLOWS: A FIR 60" DIA., BEARS N 48°45' E, 56 LKS. DIST. MKD: 1/4 S BT A FIR 20" DIA., BEARS S 68°45' E, 57 LKS. DIST. MKD: 1/4 S BT

JUNE 1943 - OCTOBER 1957 BLM RESURVEY BY OTIS GOULD, JOSEPH GAWRON AND ORVILLE EGGEN, CADASTRAL SURVEYORS UNDER GROUP NO. 244 (DCSO RECORDS VOLUME 30, PAGE 12647) 1/4 SECTION CORNER DETERMINED AT RECORD BEARING AND DISTANCE FROM REMAINS OF THE ORIGINAL BEARING TREES: A FIR STUMP 56" DIA., BEARS N 48° E, 59 LKS. DIST. MKD: 1/4 S32 BT A FIR 30" DIA., BEARS S 72° E, 59 LKS. DIST. MKD: 1/4 S5 AT THE CORNER POINT, SET AN IRON POST, 3 FT LONG, 2" DIA., 27" IN THE GROUND AND IN A MOUND OF STONE, 3 FT BASE, TO TOP, WITH BRASS CAP MKD: T23S R6W 1/4 S32 S5 T24S 1957 FROM WHICH: A HEMLOCK 10" DIA., BEARS N 58° W, 11-1/2 LKS. DIST. MKD: 1/4 S32 BT A FIR 16" DIA., BEARS S 61° W, 79-1/2 LKS. DIST. MKD: 1/4 S5 BT

SEPTEMBER 1, 1966 DOUGLAS COUNTY SURVEYORS OFFICE VERNON RAY TRACY, JACK HERITAGE, V. PERRON, CREW (C.S. 52/102-28) FOUND: GLO BRASS CAP MKD: T23S R6W 1/4 S32-5 T24-6W 1957 16" NOW 18" W.FIR STUMP BEARS S 61° W, 52.8 FT NEARLY HEALED BLAZES, PARTIAL SCRIBE MARKS VISIBLE. ORIGINAL NE BT IS STUMP ORIGINAL SE BT, TURNED OUT NEW BT'S: 9" HEMLOCK S 40-1/2° E, 30.8 FT MKD: 1/4 S5 CS BT 10" D.FIR N 38° W, 86.5 FT MKD: 1/4 S32 CS BT CORNER LIES IN OLD, LOGGED-OFF UNIT

JUNE 9, 1986 - AUGUST 22, 1995 BLM CORRECTIVE DEPENDENT RESURVEY BY WAYNE L. ROGERS, BOYD W. PETERSON, PHILIP G. GRIFFIN, DALE T. BEDELL, CADASTRAL SURVEYORS AND ROBERT H. BROWNING, SURVEYING TECHNICIAN UNDER GROUP NO. 1266 (DCSO RECORDS VOLUME 51, PAGES 19450-51) THE 1/4 SECTION CORNER OF SECTION 5 AND 32, MONUMENTED WITH AN IRON POST, 2" DIA., FIRMLY SET, PROJECTING 4" ABOVE A MOUND OF STONE, 3 FT BASE, TO TOP, WITH BRASS CAP MKD: T23S R6W 1/4 S32 S5 T24S R6W 1957 FROM WHICH THE REMAINS OF BEARING TREES MKD. BY WHIPPLE: A SAWED FIR STUMP, 66" DIA., BEARS N 48° E, 59 LKS. DIST. WITH KNIFE MARKS 1/4 S VISIBLE ON OPEN BLAZE FACING SOUTH A ROTHOLE, BEARS S 72° E, 59 LKS. DIST. ALONGSIDE OF WHICH IS LYING A FIR, 30" DIA., NO MARKS VISIBLE ON OPEN BLAZE AND A BEARING TREE MKD. BY GOULD, GAWRON AND EGGEN: A HEMLOCK, 28" DIA., BEARS S 61° W, 79-1/2 LKS. DIST. WITH HEALED DOUBLE BLAZE (RECORD, FIR) AND BEARING TREES MKD BY VERNON TRACY, DEPUTY COUNTY SURVEYOR IN 1966, AS INDICATED IN GOVERNMENT CORNER RENEWAL NO. 55: A HEMLOCK 18" DIA., BEARS S 40-1/2° E, 46-1/2 LKS. DIST. WITH HEALED BLAZE A ROOTWAD, BEARS N 38° W, 131 LKS. DIST. ALONGSIDE OF WHICH IS LYING A ROTTED FIR LOG, 10" DIA., WITH FRAGMENTARY SCRIBE MARKS VISIBLE ON ROTTED BLAZE AND A NEW BEARING TREE: A FIR, 10" DIA., BEARS N 41° W, 12 LKS. DIST. MKD: 1/4 S32 BT

JUNE 2010 ROBERT B. WARD JR., RON RICE AND JOSH REED, CREW (C.S. FILE 65/69-25) FOUND BLM BRASS CAP (PROPERLY MARKED) DATED 1957 WITH THE FOLLOWING ACCESSORIES: A 66" FIR STUMP BEARS N 48° E, 38.9' HEALED FACE A 34" W.FIR BEARS S 61° W, 52.5' HEALED FACE (BLM REPORTED HEMLOCK) A 20" HEMLOCK BEARS S 40-1/2° E, 30.7' HEALED FACE

AUGUST 1, 2023 GARRETT FINCH AND CREW WITH MINISTER AND GLAESER SURVEYING FOUND 3-1/4" GLO BRASS CAP, 0.9" ABOVE GROUND WITH MOUND OF STONE FROM WHICH: A 13" FIR BEARS N 41° W, 7.7 FT WITH HEALED BLAZE AND BT SIGN (1993) A 17" FIR BEARS N 22° E, 8.7 FT WITH HEALED BLAZE AND BT SIGN (NO RECORD) A 19" SNAG BEARS S 42° E, 30.7 FT WITH HEALED BLAZE AND BT SIGN (2010) A 37" HEMLOCK BEARS S 60° W, 52.5 FT WITH HEALED BLAZE AND BT SIGN (2010) A ROTHOLE BEARS S 71° E, 40.6 FT WITH 24" TRUNK ALONGSIDE WITH BLAZE (1891) A 66" STUMP (4' HIGH) BEARS N 48° E, 39.4 FT (SET CHAINING NAIL AT SIDE CENTER, BT SIGNS ON FRONT AND REAR, AND PAINTED RED BAND FOR EXISTING BT'S)

BLM REFERENCES:

- 1) (1957) BUREAU OF LAND MANAGEMENT RESURVEY AND NOTES FOR T. 23 S., R. 6 W., W.M. EXECUTED BY OTIS O. GOULD, JOSEPH S. GAWRON, ORVILLE N. EGGEN GROUP NO. #244 COMMENCED 6/1/1943 - COMPLETED 10/17/57 PLAT MAP DATED 8/24/1960 (822)

201-FOUND MONUMENT

CORNER A-5, (GCDB 200700) CORNER OF SECTIONS 5 & 6 T. 24 S., R. 06 W., W.M. AND SECTIONS 31 & 32 T. 23 S., R. 06 W., W.M.

APRIL 7, 1853 ORIGINAL CORNER BY ROBERT ELDER AND HENRY GILE, DEPUTY SURVEYORS UNDER CONTRACT NO. 31 (DCSO RECORDS VOLUME 6, PAGES 2389-90) SET POST CORNER TO SECTIONS 5, 6, 31 AND 32 FROM WHICH: A FIR 15" DIA., BEARS N 22° E, 53 LKS. DIST. MKD: T23S R6W S32 BT A FIR 16" DIA., BEARS N 62° W, 60 LKS. DIST. MKD: T23S R6W S31 BT A FIR 10" DIA., BEARS S 57° W, 8 LKS. DIST. MKD: T24S R6W S6 BT A FIR 10" DIA., BEARS S 47° E, 10 LKS. DIST. MKD: T24S R6W S5 BT

JUNE 1883 GLO SURVEY BY JOHN MCQUINN UNDER CONTRACT NO. 466 FOUND A 4" SQUARE POST SET FIRMLY IN GROUND MKD T23S S32 ON NE, R6W S5 ON SE, T24S S6 ON SW, AND T31 ON NW FACES WITH 5 NOTCHES ON EAST AND 1 NOTCH ON WEST EDGES FROM WHICH: A FIR 15" DIA., BEARS N 22° E, 53 LKS. DIST. MKD: T23S R6W S32 BT A FIR 16" DIA., BEARS N 62° W, 60 LKS. DIST. MKD: T23S R6W S31 BT A FIR 10" DIA., BEARS S 57° W, 8 LKS. DIST. MKD: T24S R6W S6 BT A FIR 10" DIA., BEARS S 47° E, 10 LKS. DIST. MKD: T24S R6W S5 BT

JULY 18, 1891 GLO SURVEY BY WILLIAM R. WHIPPLE, DEPUTY SURVEYOR UNDER CONTRACT NO. 577 (DCSO RECORDS VOLUME 8, PAGE 3180) (FOUND OK ON PAGES 3190-91) THE SECTION CORNER, I REESTABLISHED BY SETTING A CEDAR POST, 4' LONG, 4" SQUARE, 24" IN THE GROUND MKD. T23S S32 ON NE, T24S S5 ON SE, R6W S6 ON SW, AND S31 ON NW FACE WITH 6 NOTCHES ON S AND 5 NOTCHES ON E EDGES, FROM WHICH ORIGINAL BEARING TREES: A FIR 15" DIA., BEARS N 22° E, 53 LKS. DIST. MKD: T23S R6W S32 BT A FIR 10" DIA., BEARS S 47° E, 10 LKS. DIST. MKD: T24S R6W S5 BT A FIR 10" DIA., BEARS S 57° W, 8 LKS. DIST. MKD: T24S R6W S6 BT A FIR 16" DIA., BEARS N 62° W, 60 LKS. DIST. MKD: T23S R6W S31 BT

JUNE 1943 - OCTOBER 1957 BLM RESURVEY BY OTIS GOULD, JOSEPH GAWRON AND ORVILLE EGGEN, CADASTRAL SURVEYORS UNDER GROUP NO. 244 (DCSO RECORDS VOLUME 30, PAGE 12648) THE SECTION CORNER, DETERMINED AT RECORD BEARING AND DISTANCES FROM THE ONLY REMAINING BEARING TREE: A FIR 24" DIA., BEARS N 22° E, 53 LKS. DIST. MKD. BT ON OPEN BLAZE AT THE CORNER POINT, SET AN IRON POST, 3' LONG, 2" DIA., 30" IN THE GROUND, AND IN A MOUND OF STONE, 3' BASE, TO TOP, WITH BRASS CAP MKD: T23S R6W S31 S32 S5 S6 T24S 1957 FROM WHICH: A HEMLOCK 12" DIA., BEARS S 63° E, 35 LKS. DIST. MKD: T24S R6W S5 BT A HEMLOCK 8" DIA., BEARS S 3° W, 17 LKS. DIST. MKD: T24S R6W S6 BT A FIR 30" DIA., BEARS N 74° W, 57 LKS. DIST. MKD: T23S R6W S31 BT

JUNE 9, 1986 - AUGUST 22, 1995 BLM CORRECTIVE DEPENDENT RESURVEY BY WAYNE L. ROGERS, BOYD W. PETERSON, PHILIP G. GRIFFIN, DALE T. BEDELL, CADASTRAL SURVEYORS AND ROBERT H. BROWNING, SURVEYING TECHNICIAN UNDER GROUP NO. 1266 (DCSO RECORDS VOLUME 51, PAGE 19451) FOUND AND USED

DECEMBER 4, 1996 MARK SMALLLEY FOR ROSEBURG FOREST PRODUCTS (C.S. 65/15-6F) FOUND: 1957 GLO I.P.B.C. A 16" HEMLOCK, BEARS S 3° W, 17 LKS. GOOD SCRIBE VISIBLE A 40" FIR, BEARS S 74° W, 57 LKS. GOOD HEALED FACE (DIAGRAM SHOWS AND REC IS NW NOT SW, ADDED 6/14/2010). A 16" HEMLOCK, BEARS S 63° E, 35 LKS. FAIR VISIBLE SCRIBE A 27" FIR, BEARS N 22° E, 53 LKS., POOR, VISIBLE SCRIBE NEW ACCESSORIES: AN 8" HEMLOCK, BEARS S 74° W, 25.1' SCRIBED: S6 BT AN 11" HEMLOCK, BEARS S 7° W, 20.9' SCRIBED: S6 BT

JUNE 2010 ROBERT WARD, RON RICE AND JOSH REED, CREW (C.S. FILE 65/69-30) FOUND BLM BRASS CAP (PROPERLY MARKED) DATED 1957 WITH THE FOLLOWING ACCESSORIES: A 30" FIR, BEARS N 22° E, 35.0' OPEN FACE AN 18" HEMLOCK, BEARS S 63° E, 23.1' HEALED FACE BLOW DOWN A 17" HEMLOCK, BEARS S 30° W, 11.2' ROTTED FACE A 40" FIR, BEARS N 74° W, 37.6' HEALED FACE A 13" HEMLOCK, BEARS S 20° W, 20.6' HEALED FACE

JANUARY 2016 RONALD L. RICE AND CODY KIEVIT (C.S. FILE 65/93-6) FOUND BLM BRASS CAP DATED 1957 A 17" HEMLOCK STUMP, BEARS S 30° W, 11.2' ROTTED FACE A 40" D.FIR METAL CAPPED STUMP, BEARS N 74° W, 37.6' HEALED FACE A 13" HEMLOCK STUMP, BEARS S 20° W, 20.6' HEALED FACE NEW: CORNER FALLS IN RECENTLY LOGGED AREA. NO NEW ACCESSORIES ESTABLISHED. SET 60D NAIL AT SIDE CENTER OF ALL BEARING TREE STUMPS. ADDED GALVANIZED SHEET METAL CAP TO NW BEARING TREE STUMP AS NOTED ABOVE. NOTE: CORNER HAS STEEL POST ADJACENT TO IT. ALL BT'S HAVE RED PAINTED BANDS AND YELLOW TAGS. COMPASS DECLINATION 16° E

JULY 31, 2023 GARRETT FINCH AND CREW WITH MINISTER AND GLAESER SURVEYING FOUND 3-1/4" GLO BRASS CAP, 0.4" ABOVE GROUND FROM WHICH: A 19" STUMP (6' HIGH) BEARS S 30° W, 12.0 FT WITH HEALED BLAZE, BT AND ROSEBURG TIMBER SIGN AND SIDE NAIL (2010) A 12" STUMP (6' HIGH) BEARS S 18° W, 21.1 FT WITH HEALED BLAZE, ROSEBURG TIMBER SIGN AND SIDE NAIL (2010) A 36" STUMP (6' HIGH) BEARS N 65° W, 37.6 FT WITH HEALED BLAZE, ROSEBURG TIMBER SIGN AND METAL TOP (2016) (SET CHAINING NAIL AT SIDE CENTER, BT SIGNS ON FRONT AND REAR, AND PAINTED RED BAND FOR EXISTING BT'S)

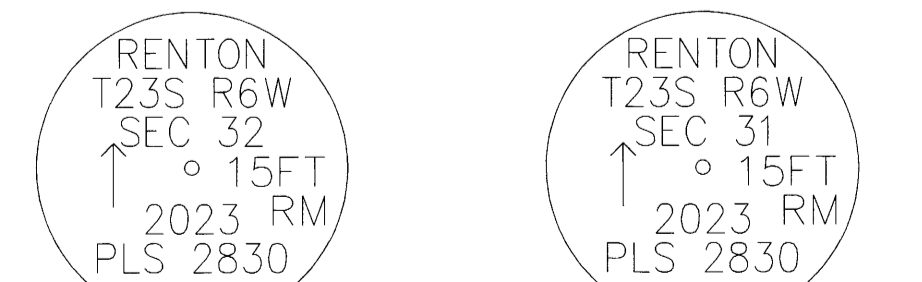
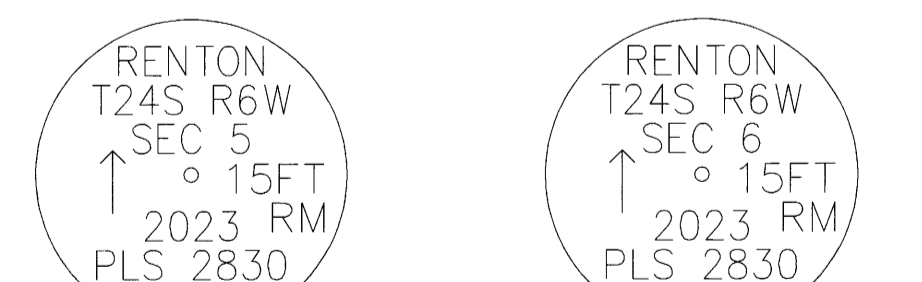
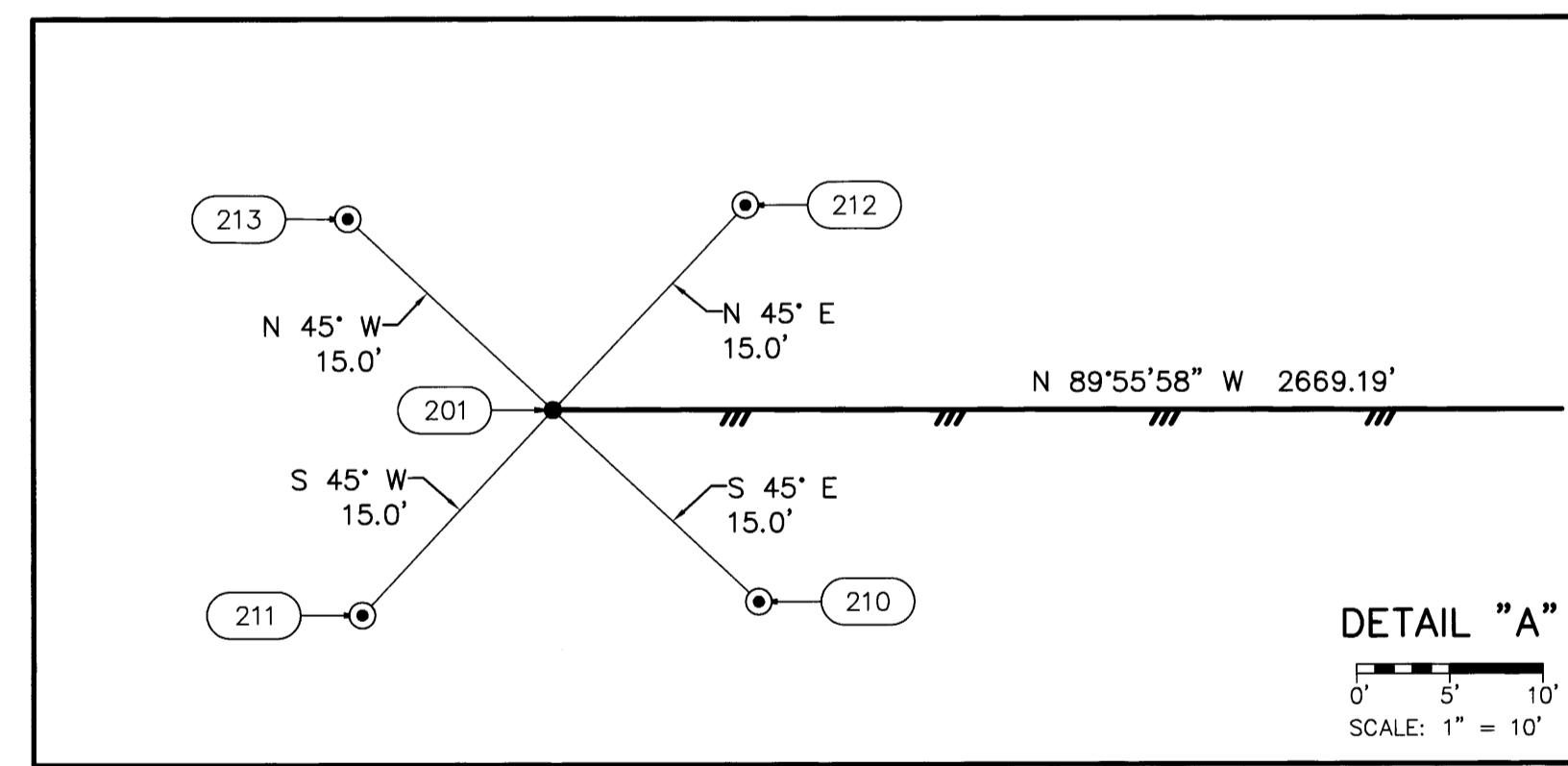
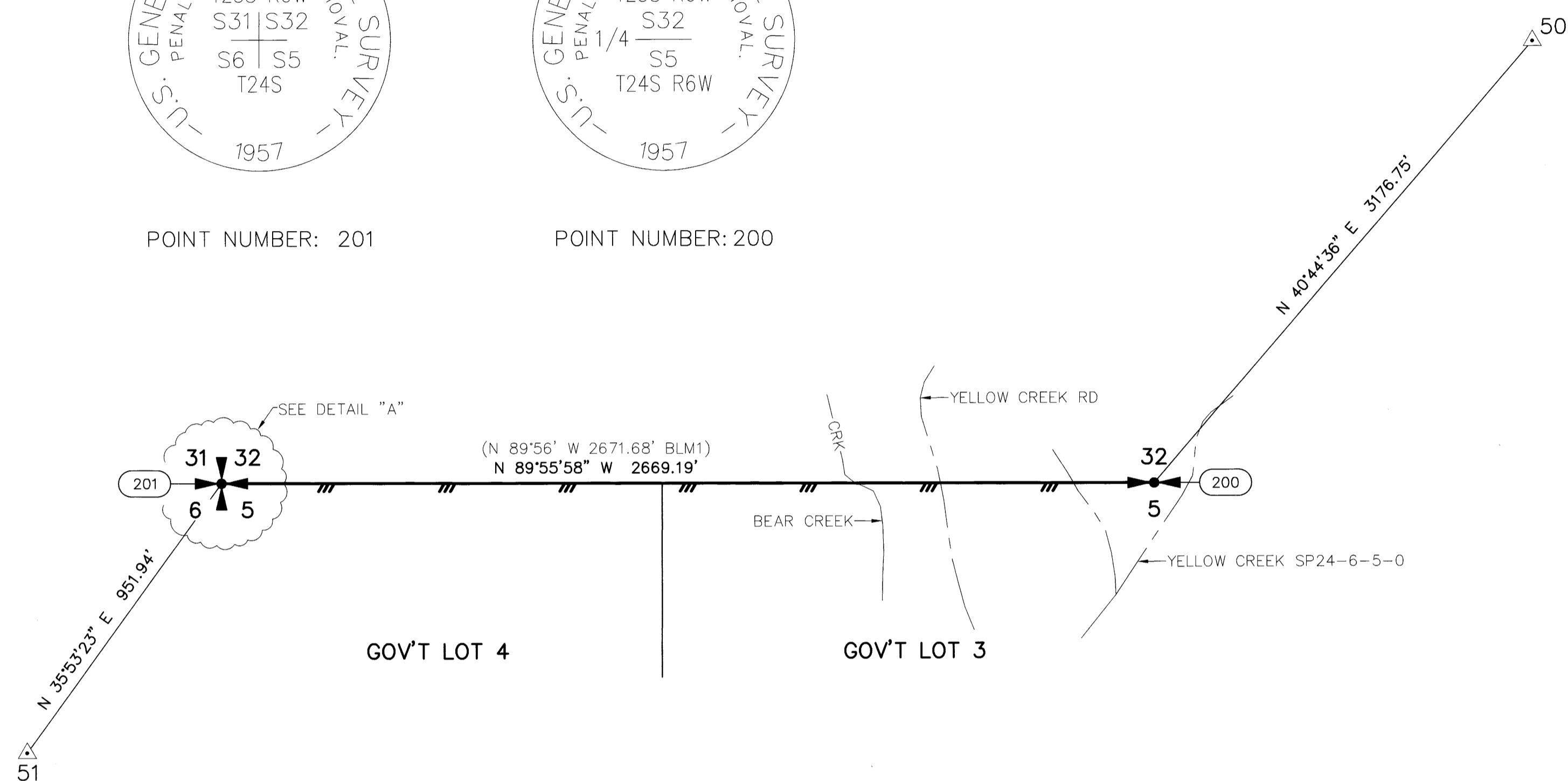
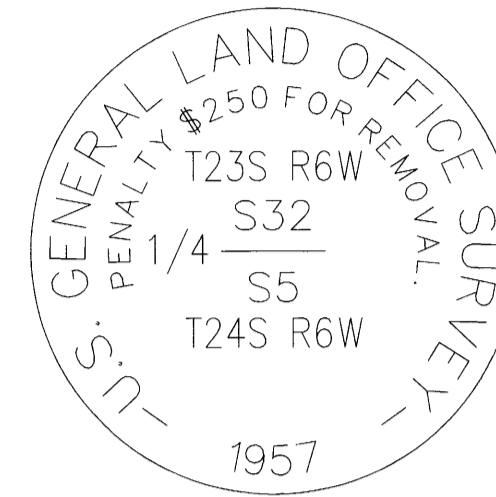
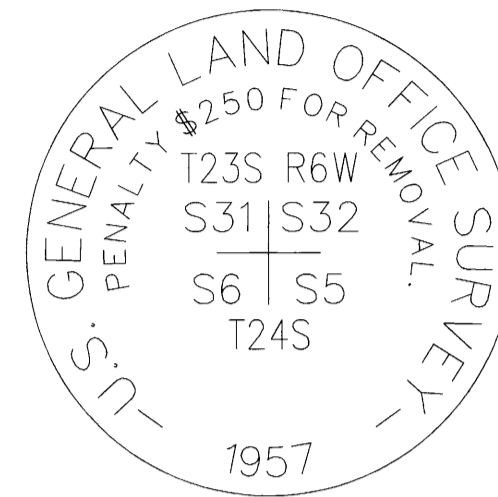
ESTABLISHED THE FOLLOWING: A 5/8" IRON ROD W/ 2" ALUMINUM CAP BEARS S 45° E, 15.0 FT A 5/8" IRON ROD W/ 2" ALUMINUM CAP BEARS S 45° W, 15.0 FT A 5/8" IRON ROD W/ 2" ALUMINUM CAP BEARS N 45° W, 15.0 FT A 5/8" IRON ROD W/ 2" ALUMINUM CAP BEARS N 45° E, 15.0 FT (SEE DETAIL "A" FOR CAP STAMPING)

RECORD OF SURVEY

LOCATED IN A PORTION OF GOV'T LOTS 3 & 4 IN THE NW 1/4 OF SECTION 5 THE SW 1/4, SE 1/4 OF THE SE 1/4 OF SECTION 11 THE NE 1/4, SE 1/4 OF THE NW 1/4 OF SECTION 15 T. 24 S., R. 6 W., W.M. MEAN MUSTARD & GALLAGHER CANYON 1-TASK A DOUGLAS COUNTY, OREGON CONTRACT NO. 1204T020D0010 TASK ORDER NO. 140L4322F0063

FILED DATE: 9-11-2024 BY: [Signature] THIS SURVEY CONSISTS OF: MAP: M185-5 A-D NARRATIVE: CORNER RPT: DOUGLAS COUNTY SURVEYOR

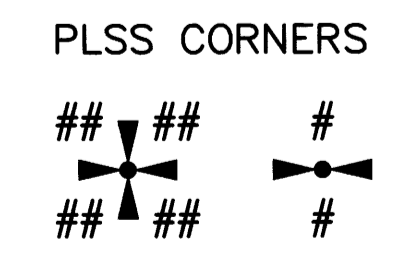
MONUMENT TABLE with columns: POINT NO., NORTHING, EASTING, DESCRIPTION. Rows for points 200 and 201.



REGISTERED PROFESSIONAL LAND SURVEYOR, DANIEL A. RENTON, 2830, Expires 12-31-2024

SCALE 1 INCH = 300 FEET

- LEGEND: INDICATES MONUMENT FOUND AS NOTED IN TABLES, INDICATES 5/8" X 30" REBAR WITH 2" ALUMINUM CAP, SEE MONUMENT DETAILS SHEET 2, INDICATES MGS CONTROL POINT, SEE CONTROL TABLE, SHEET 1, (S#) INDICATES RECORD DATA PER SURVEY REFERENCE NUMBER, (BLM#) INDICATES RECORD DATA PER BUREAU OF LAND MANAGEMENT NUMBER, T. INDICATES TOWNSHIP, R. INDICATES RANGE, SEC. INDICATES SECTION, GLO INDICATES GENERAL LAND OFFICE, BT INDICATES BEARING TREE, CH INDICATES CHAINS (1 CHAIN=66 FEET), LKS INDICATES LINKS (1 LINK=0.66 FEET), W/ INDICATES WITH, RPC INDICATES RED PLASTIC CAP, ALUM. INDICATES ALUMINUM, CONT. INDICATES CONTINUED, N.O.L. INDICATES NORTH OF LINE, E.O.L. INDICATES EAST OF LINE, S.O.L. INDICATES SOUTH OF LINE, W.O.L. INDICATES WEST OF LINE, --- INDICATES BOUNDARY LINE, MARKED AND POSTED, --- INDICATES SECTION SUBDIVISION, ---CRK--- INDICATES CENTERLINE OF CREEK, --- INDICATES CENTERLINE OF ROAD, ---x---x--- INDICATES FENCE LINE



MINISTER-GLAESER SURVEYING INC., 2200 E. EVERGREEN BLVD., VANCOUVER, WA 98661 (360) 694-3313, SCALE: 1"=300', JOB NO. 22-319, DATE: 2/29/2024, CALC BY: DAR, DRAWN BY: RDH, CHECKED BY: DAR, SHEET 2 OF 4

202-FOUND MONUMENT

CORNER J-14, (GCDB 420500) W 1/16 CORNER OF SECTIONS 10 & 15 T. 24 S., R. 06 W., W.M.

SEPTEMBER 5, 1973 - AUGUST 19, 1975 BLM DEPENDENT RESURVEY BY DANIEL L. BERRY, CHARLES E. AKIN JR, AND GLENN S. BAUGHMAN UNDER GROUP NO. 826 AND 856 UNDER CONTRACT NO. 52500-CT5-1116 (DCSO RECORDS VOLUME 37, PAGE 15248) THE W 1/16 SECTION CORNER OF SECTIONS 10 & 15, ESTABLISHED BY ROSEBURG LUMBER CO., IN 1973, MONUMENTED WITH A WOODEN POST, 4" SQUARE, FIRMLY SET, PROJECTING 4" ABOVE GROUND, FROM WHICH BEARING TREES MARKED BY ROSEBURG LUMBER CO: A FIR 13" DIA., BEARS N 22-1/2' E, 30-1/2 LKS. DIST., NO MARKS VISIBLE ON OPEN BLAZE A FIR 37" DIA., BEARS S 83' E, 32 LKS. DIST., NO MARKS VISIBLE ON OPEN BLAZE AT THE CORNER POINT, SET AN IRON POST, 28" LONG, 2-1/2" DIA., 24" IN THE GROUND, WITH BRASS CAP MKD: W 1/16 S10 S15 1973 FROM WHICH NEW BEARING TREES: A FIR 13" DIA., BEARS N 41' E, 44-1/2 LKS. DIST. MKD: W 1/16 S10 BT A FIR 18" DIA., BEARS S 84' E, 51 LKS. DIST. MKD: W 1/16 S15 BT RESET WOODEN POST ALONGSIDE IRON POST.

SEPTEMBER 5, 1991 - OCTOBER 2, 1991 BLM DEPENDENT RESURVEY BY WAYNE L. ROGERS, CADASTRAL SURVEYOR UNDER GROUP NO. 1623 (DCSO RECORDS VOLUME 50, PAGES 19228-229) THE W 1/16 SECTION CORNER OF SECTIONS 10 & 15, MONUMENTED WITH AN IRON POST, 2-1/2" DIA., FIRMLY SET, PROJECTING 4" ABOVE GROUND, WITH BRASS CAP MKD: W 1/16 S10 S15 1973 FROM WHICH THE BEARING TREES MKD. BY ROSEBURG LUMBER CO. IN 1973: A FIR 17" DIA., BEARS N 22-1/2' E, 30-1/2 LKS. DIST., WITH HEALED BLAZE A FIR 9" DIA., BEARS S 83' E, 32 LKS. DIST., WITH HEALED BLAZE AND BEARING TREES MKD. BY BERRY, AKIN, AND BAUGHMAN: A FIR 16" DIA., BEARS N 41' E, 44-1/2 LKS. DIST., WITH HEALED BLAZE A FIR 20" DIA., BEARS S 84' E, 51 LKS. DIST., WITH HEALED BLAZE

AUGUST 1, 2023 GARRETT FINCH AND CREW WITH MINISTER AND GLAESER SURVEYING FOUND 3-1/4" BLM BRASS CAP, 0.6" ABOVE GROUND FROM WHICH: AN EAST/WEST WIRE FENCE BEARS NORTH 1.3' A 25" FIR BEARS S 88' E, 33.7', WITH HEALED BLAZE AND SIGN (1973) A 9" FIR SNAG BEARS S 83' E, 20.6' WITH SIGN (1973) A 20" FIR BEARS N 41' E, 29.1' WITH HEALED BLAZE AND SIGN (1973) A 23" FIR BEARS N 22' E, 20.2' WITH SIGN (1973) (SET CHAINING NAIL AT SIDE CENTER, BT SIGNS ON FRONT AND REAR, AND PAINTED RED BAND FOR EXISTING BT'S)

203-FOUND MONUMENT

CORNER L-14, (GCDB 420440) C-W 1/16 CORNER OF SECTION 15 T. 24 S., R. 06 W., W.M.

SEPTEMBER 5, 1991 - OCTOBER 2, 1991 BLM DEPENDENT RESURVEY BY WAYNE L. ROGERS, CADASTRAL SURVEYOR UNDER GROUP NO. 1623 (DCSO RECORDS VOLUME 50, PAGES 19230-1) THE POINT FOR THE CENTER WEST 1/16 SECTION CORNER OF SECTION 15, SET A STAINLESS STEEL POST, 28" LONG, 2-1/2" DIA., 22" IN THE GROUND, WITH BRASS CAP MKD: W 1/16 C-C S15 1991 FROM WHICH: A FIR 24" DIA., BEARS S 72' W, 43 LKS. DIST. MKD: CW 1/16 S15 BT A FIR 26" DIA., BEARS N 16' W, 40 LKS. DIST. MKD: CW 1/16 S15 BT DEPOSIT A WHITE "DEEP-1" MAGNETIC MARKER AT BASE OF STAINLESS POST

SEPTEMBER 4, 1998 MARK F. SMALLLEY (MAP FILE M129-12) FOUND 1991 CADASTRAL BRASS CAP ON IRON PIPE FROM WHICH: 24" FIR BEARS S 72' W, 28.4' HEALED 26" FIR BEARS N 16' W, 26.4' HEALED

AUGUST 1, 2023 GARRETT FINCH AND CREW WITH MINISTER AND GLAESER SURVEYING FOUND 3-1/4" BLM BRASS CAP, 0.5' ABOVE GROUND FROM WHICH: A 30" FIR BEARS S 72' W, 28.3' WITH HEALED BLAZE AND SIGN (1991) A 29" FIR STUMP BEARS N 16' W, 26.9' WITH HEALED BLAZE AND SIGN (1991) (SET CHAINING NAIL AT SIDE CENTER, BT SIGNS ON FRONT AND REAR, AND PAINTED RED BAND FOR EXISTING BT'S)

ESTABLISHED THE FOLLOWING: AN 11" FIR BEARS N 20' E, 30.1' MKD: CW 1/16 S15 BT (SET CHAINING NAIL AT SIDE CENTER, BT SIGNS ON FRONT AND BACK AND PAINTED RED BAND FOR NEW BT)

SURVEY REFERENCES:

- 1) (2012) SWEEDEN SURVEY MAP FILE M163-27 SECTION 15, T. 24 S., R. 6 W., W.M.
2) (1998) SMALLLEY SURVEY MAP FILE M129-12 SECTION 15, T. 24 S., R. 6 W., W.M.

BLM REFERENCES:

- 2) (1975) BUREAU OF LAND MANAGEMENT RESURVEY AND NOTES FOR T. 24 S., R. 6 W., W.M. EXECUTED BY DANIEL L. BERRY, CHARLES E. AKIN, GLENN S. BAUGHMAN GROUP #826 & #856 - CONTRACT #52500-CT5-1116 COMMENCED 9/5/1973 - COMPLETED 8/19/1975 DEPENDENT RESURVEY DATED 8/18/1977 (5590)
3) (1991) BUREAU OF LAND MANAGEMENT RESURVEY AND NOTES FOR T. 24 S., R. 6 W., W.M. EXECUTED BY WAYNE L. ROGERS GROUP #1623 COMMENCED 9/5/1991 - COMPLETED 10/2/1991 DEPENDENT RESURVEY DATED 6/27/1994 (6591)

204-FOUND MONUMENT

CORNER J-15, (GCDB 440500) 1/4 CORNER OF SECTIONS 10 & 15 T. 24 S., R. 06 W., W.M.

1853 GLO SURVEY BY R. ELDER UNDER CONTRACT NO. 21 (DCSO RECORDS VOLUME 8, PAGE 3151) SET 1/4 SECTION POST FROM WHICH: A FIR 36" DIA., BEARS S 14' E, 30 LKS (ALL RECORDS BELOW S 14' W, 30 LKS.) A FIR 24" DIA., BEARS N 33' W, 56 LKS.

SEPTEMBER 5, 1973 - AUGUST 19, 1975 BLM DEPENDENT RESURVEY BY DANIEL L. BERRY, CHARLES E. AKIN JR, AND GLENN S. BAUGHMAN UNDER GROUP NO. 826 AND 856 UNDER CONTRACT NO. 52500-CT5-1116 (DCSO RECORDS VOLUME 37, PAGES 15247-48) THE 1/4 CORNER OF SECTIONS 10 & 15, PERPETUATED BY PERSON(S) UNKNOWN, MONUMENTED WITH A WOODEN POST, 4" SQUARE, FIRMLY SET, PROJECTING 10" ABOVE GROUND, FROM WHICH THE REMAINS OF THE ORIGINAL BEARING TREES: A SAWED FIR STUMP, 48" DIA., BEARS S 14' W, 30 LKS. DIST., NO MARKS VISIBLE ON OPENED BLAZE AT THE CORNER POINT, SET AN IRON POST, 28" LONG, 2-1/2" DIA., 24" IN THE GROUND, WITH BRASS CAP MKD: 1/4 S10 S15 T24S R6W 1973 FROM WHICH NEW BEARING TREES: A FIR 10" DIA., BEARS N 79' E, 53 LKS. DIST. MKD: 1/4 S10 BT A FIR 6" DIA., BEARS S 63' W, 20 LKS. DIST. MKD: 1/4 S15 BT RESET WOODEN POST ALONGSIDE IRON POST. FROM THIS POINT, A LOCAL CORNER ESTABLISHED BY ROSEBURG LUMBER CO., IN 1973, BEARS N 28' W, 0.05 CH. DIST., MONUMENTED WITH AND IRON PIPE, 1-1/2" DIA., FIRMLY SET, PROJECTING 28" ABOVE GROUND, FROM WHICH BEARING TREES MKD. BY ROSEBURG LUMBER CO: A FIR 10" DIA., BEARS N 77-1/2' E, 24 LKS. DIST., NO MARKS VISIBLE ON OPEN BLAZE A FIR 4" DIA., BEARS S 19' W, 12 LKS. DIST., NO MARKS VISIBLE ON OPEN BLAZE

SEPTEMBER 5, 1991 - OCTOBER 2, 1991 BLM DEPENDENT RESURVEY BY WAYNE L. ROGERS, CADASTRAL SURVEYOR UNDER GROUP NO. 1623 (DCSO RECORDS VOLUME 50, PAGE 19228) FROM THE 1/4 SECTION CORNER OF SECTIONS 10 & 15, MONUMENTED WITH AN IRON POST, 2-1/2" DIA., FIRMLY SET, PROJECTING 4" ABOVE GROUND, WITH BRASS CAP MKD: 1/4 S10 S15 T24S R6W 1973 FROM WHICH THE REMAINS OF AN ORIGINAL BEARING TREE: A SAWED FIR STUMP, 48" DIA., BEARS S 14' W, 30 LKS. DIST., NO MARKS VISIBLE ON OPENED BLAZE AND BEARING TREES MKD. BY BERRY, AKIN, AND BAUGHMAN: A FIR 18" DIA., BEARS N 79' E, 53 LKS. DIST., WITH HEALED BLAZE A FIR 13" DIA., BEARS S 63' W, 20 LKS. DIST., WITH HEALED BLAZE FROM THIS POINT, A LOCAL CORNER ESTABLISHED BY ROSEBURG LUMBER CO., IN 1973, BEARS N 28' W, 0.05 CH. DIST., MONUMENTED WITH AND IRON PIPE, 1-1/2" DIA., FIRMLY SET, PROJECTING 28" ABOVE GROUND, FROM WHICH BEARING TREES MKD. BY ROSEBURG LUMBER CO: A FIR 10" DIA., BEARS N 77-1/2' E, 24 LKS. DIST., NO MARKS VISIBLE ON HEALED BLAZE A FIR 4" DIA., BEARS S 19' W, 12 LKS. DIST., HEALED BLAZE

SEPTEMBER 5, 1991 - OCTOBER 2, 1991 BLM DEPENDENT RESURVEY BY WAYNE L. ROGERS, CADASTRAL SURVEYOR UNDER GROUP NO. 1623 (DCSO RECORDS VOLUME 50, PAGE 19228) FROM THE 1/4 SECTION CORNER OF SECTIONS 10 & 15, MONUMENTED WITH AN IRON POST, 2-1/2" DIA., FIRMLY SET, PROJECTING 4" ABOVE GROUND, WITH BRASS CAP MKD: 1/4 S10 S15 T24S R6W 1973 FROM WHICH THE REMAINS OF AN ORIGINAL BEARING TREE: A SAWED FIR STUMP, 48" DIA., BEARS S 14' W, 30 LKS. DIST., NO MARKS VISIBLE ON OPENED BLAZE AND BEARING TREES MKD. BY BERRY, AKIN, AND BAUGHMAN: A FIR 18" DIA., BEARS N 79' E, 53 LKS. DIST., WITH HEALED BLAZE A FIR 13" DIA., BEARS S 63' W, 20 LKS. DIST., WITH HEALED BLAZE FROM THIS POINT, A LOCAL CORNER ESTABLISHED BY ROSEBURG LUMBER CO., IN 1973, BEARS N 28' W, 0.05 CH. DIST., MONUMENTED WITH AND IRON PIPE, 1-1/2" DIA., FIRMLY SET, PROJECTING 28" ABOVE GROUND, FROM WHICH BEARING TREES MKD. BY ROSEBURG LUMBER CO: A FIR 10" DIA., BEARS N 77-1/2' E, 24 LKS. DIST., NO MARKS VISIBLE ON HEALED BLAZE A FIR 4" DIA., BEARS S 19' W, 12 LKS. DIST., HEALED BLAZE

FEBRUARY 2, 2012 CARL SWEEDEN WITH SWEEDEN LAND SURVEYING (DCSO RECORDS M163-27) FOUND 3-1/4" 1973 BRASS CAP FROM WHICH: A 48" SAWED STUMP BEARS S 14' W, 19.8' ROTTING WITH SAWN FACE A 23" SAWN W.FIR STUMP (6.5' HIGH) BEARS N 79' E, 35', FAINT SCAR ON FACE A 20" D.FIR BEARS S 63' W, 13.2', VERY FAINT SCAR, TAG A 1-1/2" IRON PIPE BEARS N 28' W, 3.3' ROSEBURG LUMBER CO. BT'S TO IRON PIPE: A 22" SAWN FIR STUMP (2' HIGH) BEARS N 77-30' E, 15.8' AN 11" FIR BEARS S 19' W, 7.9' DOUBLE SCAR, TAG

AUGUST 1, 2023 GARRETT FINCH AND CREW WITH MINISTER AND GLAESER SURVEYING FOUND 3-1/4" BLM BRASS CAP, 0.5' ABOVE GROUND FROM WHICH: AN EAST/WEST WIRE FENCE BEARS NORTH 2' A NORTH/SOUTH BARB WIRE FENCE BEARS EAST 0.4' A 1-1/2" IRON PIPE BEARS N 28' W 3.3' (1973 ROSEBURG LUMBER CO.) A 12" FIR BEARS S 42' W, 7.2' TO BLM BRASS CAP WITH HEALED DOUBLE BLAZE AND SIGN (1973 RECORD TO ROSEBURG IRON PIPE, S 19' W, 12 LKS.) A 24" FIR BEARS S 63' W, 14.0' WITH HEALED BLAZE AND SIGN (1973) A 38" STUMP (4' HIGH) BEARS S 14' W, 19.5' (ORIG.) A 17" ROTTED STUMP BEARS N 68' E, 14.6' TO BLM BRASS CAP (1973 RECORD TO ROSEBURG IRON PIPE, N 77-1/2' E, 24 LKS.) A 13" ROTTED STUMP (6' HIGH) BEARS N 72' E, 35.1' (1973) (SET CHAINING NAIL AT SIDE CENTER, BT SIGNS ON FRONT AND REAR, AND PAINTED RED BAND FOR EXISTING BT'S)

ESTABLISHED THE FOLLOWING: A 7" FIR BEARS N 83' E, 7.3' MKD: 1/4 S10 BT (SET CHAINING NAIL AT SIDE CENTER, BT SIGNS ON FRONT AND BACK AND PAINTED RED BAND FOR NEW BT)

MONUMENT TABLE with columns: POINT NO., NORTHING, EASTING, DESCRIPTION. Rows include points 202, 203, 204, and 205 with their respective coordinates and descriptions.

205-FOUND MONUMENT

CORNER L-15, (GCDB 440440) C 1/4 CORNER OF SECTION 15 T. 24 S., R. 06 W., W.M.

SEPTEMBER 5, 1991 - OCTOBER 2, 1991 BLM DEPENDENT RESURVEY BY WAYNE L. ROGERS, CADASTRAL SURVEYOR UNDER GROUP NO. 1623 (DCSO RECORDS VOLUME 50, PAGE 19230) POINT FOR THE CENTER 1/4 SECTION CORNER OF SECTION 15, AT INTERSECTION WITH THE EAST AND WEST CENTERLINE. SET A STAINLESS STEEL POST, 28" LONG, 2-1/2" DIA., 24" IN THE GROUND, WITH BRASS CAP MKD: T24S R6W C 1/4 S15 1991 FROM WHICH: A FIR 9" DIA., BEARS N 37' E, 33 LKS. DIST. MKD: C 1/4 S15 BT A FIR 12" DIA., BEARS N 50' W, 14 LKS. DIST. MKD: C 1/4 S15 BT DEPOSIT A WHITE "DEEP-1" MAGNETIC MARKER AT BASE OF STAINLESS STEEL POST

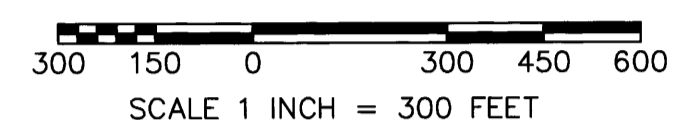
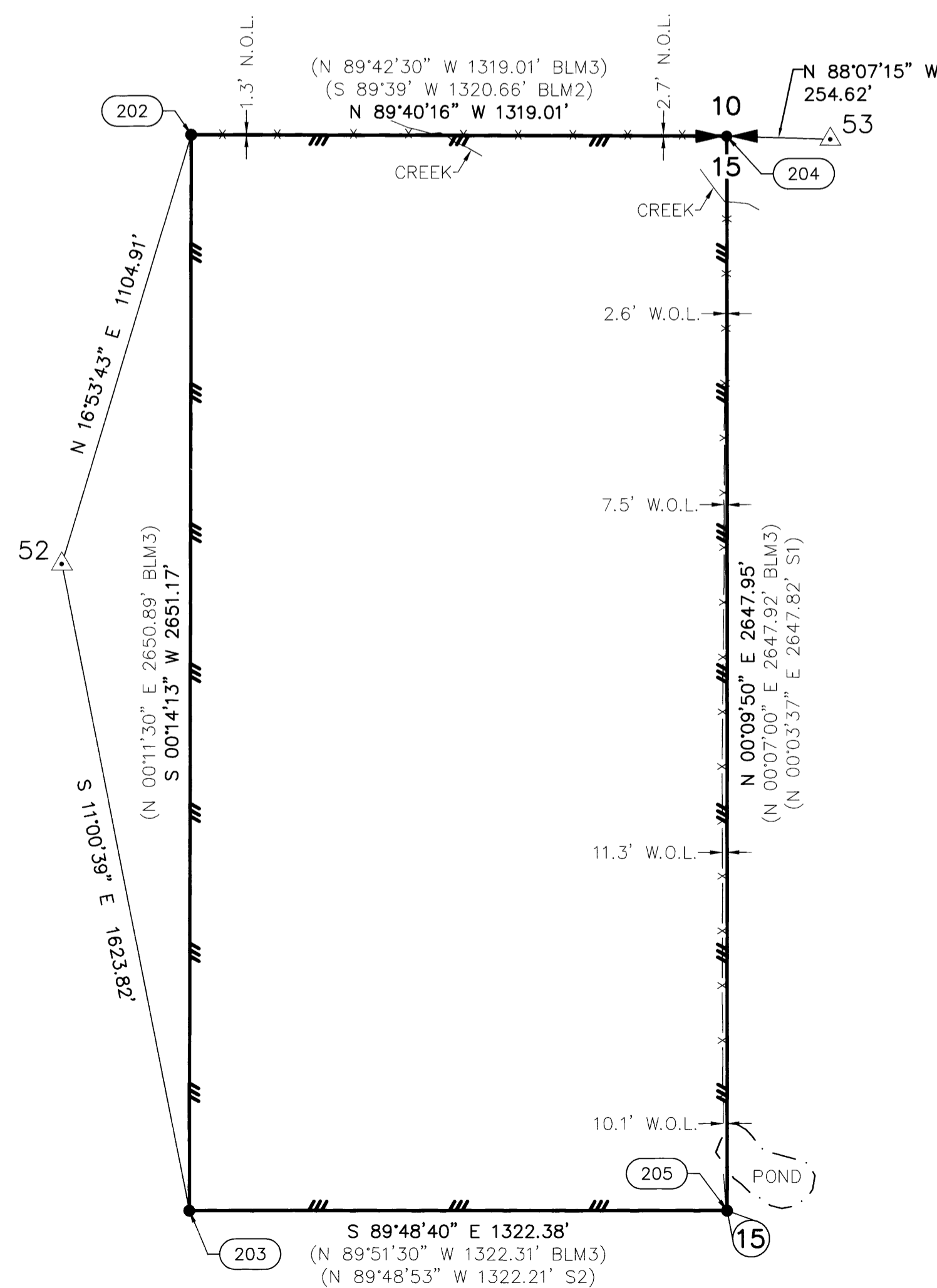
SEPTEMBER 4, 1998 MARK F. SMALLLEY (MAP FILE M129-12) FOUND 1991 CADASTRAL BRASS CAP ON IRON PIPE FROM WHICH: 9" FIR BEARS N 37' E, 21.8' HEALED 13" FIR BEARS N 50' W, 9.2' PART HEALED SCRIBED: 13" FIR BEARS S 30' W, 9.6' MKD: C 1/4 BT 10" FIR BEARS S 15' E, 10.6' MKD: C 1/4 BT

FEBRUARY 2, 2012 CARL SWEEDEN WITH SWEEDEN LAND SURVEYING (DCSO RECORDS M163-27) FOUND 3-1/4" 1991 BRASS CAP FROM WHICH: A 9" D.FIR, DOWN, BEARS N 37' E, 21.8' TO ROTHOLE, TAG STILL ON TREE A 13" SAWN D.FIR STUMP (14' HIGH) BEARS N 50'W, 9.2', SCAR ON FACE, TAG A 13" SAWN D.FIR STUMP (4' HIGH) BEARS S 30' W, 9.6', SCRIBE VISIBLE, TAG A 9" SAWN D.FIR STUMP (4' HIGH) BEARS S 15' E, 10.6', SCRIBE VISIBLE

SEPTEMBER 17, 2018 F. NEIL HIBBS FOUND BRASS CAP AND BT'S OF RECORD C 1/4 PLSS #440440

AUGUST 1, 2023 GARRETT FINCH AND CREW WITH MINISTER AND GLAESER SURVEYING FOUND 3-1/4" BLM BRASS CAP, 0.3" ABOVE GROUND FROM WHICH: A NORTH/SOUTH BARB WIRE FENCE BEARS 2.5' WEST A 9" ROTTED STUMP BEARS S 25' E, 10.3' TO SIDE CENTER, MKD. C 1/4 BT WITH NAIL/WASHER LS2354 AT BASE OF BLAZE & SIGN, 9.8' TO NAIL AT FACE (1998) A 12" ROTTEN STUMP BEARS S 28' W, 9.5' TO SIDE CENTER, MKD: C 1/4 BT WITH NAIL/WASHER LS2354 AT BASE OF BLAZE & SIGN, 8.7' TO NAIL AT FACE (1998) A 12" SNAG BEARS N 45' W, 10.7' WITH HEALED BLAZE AND SIGNS (1991) (SET CHAINING NAIL AT SIDE CENTER, BT SIGNS ON FRONT AND REAR, AND PAINTED RED BAND FOR EXISTING BT'S)

ESTABLISHED THE FOLLOWING: A 23" CEDAR BEARS N 21' W, 30.3' MKD: C 1/4 S15 BT A 7" FIR BEARS S 73' E, 18.6' MKD: C 1/4 S15 BT (SET CHAINING NAIL AT SIDE CENTER, BT SIGNS ON FRONT AND BACK AND PAINTED RED BAND FOR NEW BT)

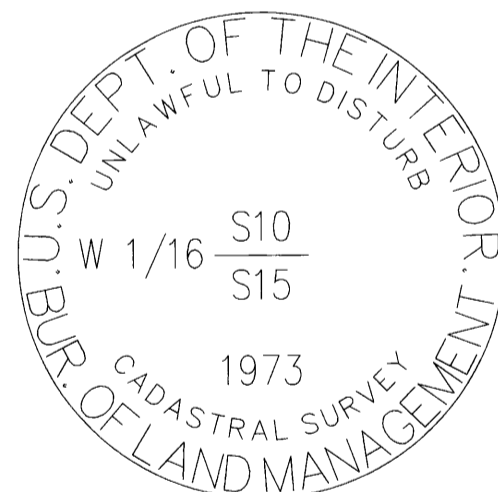
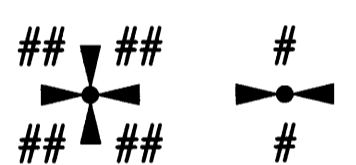


RECORD OF SURVEY

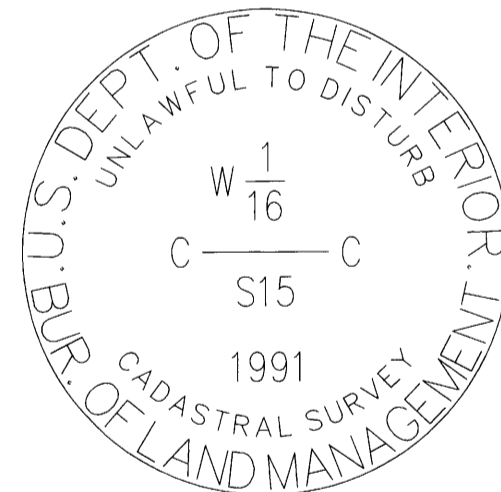
LOCATED IN A PORTION OF GOV'T LOTS 3 & 4 IN THE NW 1/4 OF SECTION 11 THE SW 1/4, SE 1/4 OF THE SE 1/4 OF SECTION 11 THE NE 1/4, SE 1/4 OF THE NW 1/4 OF SECTION 15 T. 24 S., R. 6 W., W.M. MEAN MUSTARD & GALAGHER CANYON 1-TASK A DOUGLAS COUNTY, OREGON CONTRACT NO. 1204T020D0010 TASK ORDER NO. 140L4322F0063

- LEGEND:
• INDICATES MONUMENT FOUND AS NOTED IN TABLES
○ INDICATES 5/8" X 30" REBAR WITH 2" ALUMINUM CAP, SET SEE MONUMENT DETAILS SHEET 2
△ INDICATES MGS CONTROL POINT SEE CONTROL TABLE, SHEET 1
(S#) INDICATES RECORD DATA PER SURVEY REFERENCE NUMBER
(BLM#) INDICATES RECORD DATA PER BUREAU OF LAND MANAGEMENT NUMBER
T. INDICATES TOWNSHIP
R. INDICATES RANGE
SEC. INDICATES SECTION
GLO. INDICATES GENERAL LAND OFFICE
BT INDICATES BEARING TREE
CH INDICATES CHAINS (1 CHAIN=66 FEET)
LKS INDICATES LINKS (1 LINK=0.66 FEET)
W/ INDICATES WITH
RPC INDICATES RED PLASTIC CAP
ALUM. INDICATES ALUMINUM
CONT. INDICATES CONTINUED
N.O.L. INDICATES NORTH OF LINE
E.O.L. INDICATES EAST OF LINE
S.O.L. INDICATES SOUTH OF LINE
W.O.L. INDICATES WEST OF LINE
--- INDICATES BOUNDARY LINE, MARKED AND POSTED
--- INDICATES SECTION SUBDIVISION
---CRK--- INDICATES CENTERLINE OF CREEK
--- -- -- INDICATES CENTERLINE OF ROAD
---x---x--- INDICATES FENCE LINE

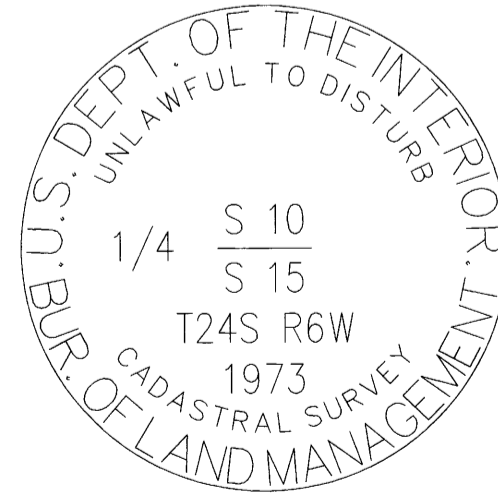
PLSS CORNERS



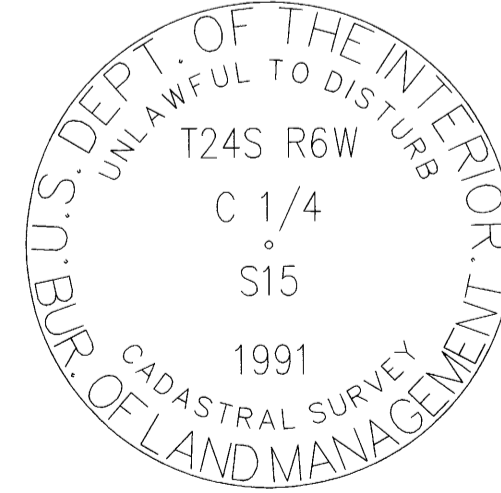
POINT NUMBER: 202



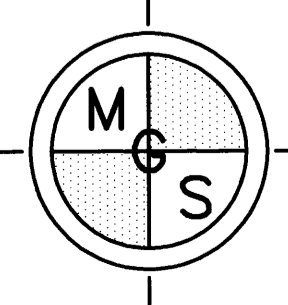
POINT NUMBER: 203



POINT NUMBER: 204



POINT NUMBER: 205



MINISTER-GLAESER SURVEYING INC. 2200 E. EVERGREEN BLVD. VANCOUVER, WA 98661 (360) 694-3313

FILED DATE 2-11-2024 BY: RB THIS SURVEY CONSISTS OF: MAP: M185-5 A-D NARRATIVE: CORNER RPT: DOUGLAS COUNTY SURVEYOR

SCALE: 1"=300' JOB NO. 22-319 DATE: 2/29/2024 CALC BY: DAR DRAWN BY: RDH CHECKED BY: DAR SHEET 3 OF 4

206—FOUND MONUMENT

CORNER J-19, (GCDB 540500)
1/4 CORNER OF SECTIONS 11 & 14 T. 24 S., R. 06 W., W.M.

APRIL 7, 1853 (ORIGINAL)
ROBERT ELDER AND HENRY GILE, DEPUTY SURVEYORS
UNDER CONTRACT #31
(DCSO RECORDS VOLUME 8, PAGE 3145)
SET 1/4 SECTION POST, FROM WHICH:
A Y.OAK 12" DIA., BEARS S 18° W, 33 LKS. DIST.
A Y.OAK 14" DIA., BEARS N 80° E, 5 LKS. DIST.

AUGUST 13, 1970
V.R. TRACY, DOUGLAS COUNTY SURVEYOR
(C.S. FILE 52/102-7)
CORNER NOT FOUND AND NO TRACE OF OLD BT'S, LOGGED AND BURNED MANY YEARS AGO

SEPTEMBER 5, 1973 — AUGUST 19, 1975
BLM DEPENDENT RESURVEY
BY DANIEL L. BERRY, CHARLES E. AKIN JR, AND GLENN S. BAUGHMAN
UNDER GROUP NO. 826 AND 856
UNDER CONTRACT NO. 52500-CT5-1116
(DCSO RECORDS VOLUME 37, PAGE 15240)
POINT FOR THE 1/4 SECTION CORNER OF SECTIONS 11 & 14, AT PROPORTIONATE DISTANCE, THERE IS NO REMAINING EVIDENCE OF THE ORIGINAL CORNER
SET AN IRON POST, 28" LONG, 2-1/2" DIA., 24" IN THE GROUND, WITH BRASS CAP MKD: T24S R6W 1/4 S11 S14 1973
FROM WHICH:
A CEDAR 25" DIA., BEARS N 41-1/2° E, 151 LKS. DIST. MKD: 1/4 S11 BT
A MADRONE 5" DIA., BEARS S 81° E, 104-1/2 LKS. DIST. MKD: 1/4 S14 BT

AUGUST 2, 2023
GARRETT FINCH AND CREW WITH MINISTER AND GLAESER SURVEYING
FOUND 3-1/4" BLM BRASS CAP, 0.4" ABOVE GROUND FROM WHICH:
A 42" CEDAR BEARS N 41-1/2° E, 102.7" WITH HEALED BLAZE (1973)
(SET CHAINING NAIL AT SIDE CENTER, BT SIGNS ON FRONT AND REAR, AND PAINTED RED BAND FOR EXISTING BT)

ESTABLISHED THE FOLLOWING:
A 21" CEDAR BEARS S 61° E, 7.4' MKD: 1/4 S14 BT
(SET CHAINING NAIL AT SIDE CENTER, BT SIGNS ON FRONT AND BACK AND PAINTED RED BAND FOR NEW BT)

207—FOUND MONUMENT

CORNER H-19, (GCDB 540520)
CS 1/16 CORNER OF SECTION 11 T. 24 S., R. 06 W., W.M.

SEPTEMBER 5, 1973 — AUGUST 19, 1975
BLM DEPENDENT RESURVEY
BY DANIEL L. BERRY, CHARLES E. AKIN JR, AND GLENN S. BAUGHMAN
UNDER GROUP NO. 826 AND 856
UNDER CONTRACT NO. 52500-CT5-1116
(DCSO RECORDS VOLUME 37, PAGE 15249)
POINT FOR THE CENTER S 1/16 SECTION CORNER OF SECTION 11,
SET AN IRON POST, 28" LONG, 2-1/2" DIA., 23" IN THE GROUND, WITH BRASS CAP MARKED: C S 1/16 S11 C 1975
FROM WHICH:
A CEDAR 13" DIA., BEARS N 72° E, 300 LKS. DIST. MKD: CS 1/16 S11 BT
A WHITE FIR 8" DIA., BEARS S 88° W, 66 LKS. DSIT. MKD: CS 1/16 S11 BT

AUGUST 2, 2023
GARRETT FINCH AND CREW WITH MINISTER AND GLAESER SURVEYING
FOUND 3-1/4" BLM BRASS CAP, 0.6" ABOVE GROUND FROM WHICH:
AN EAST/WEST WIRE FENCE BEARS SOUTH 9.0'
A 30" FIR BEARS S 88° W, 44.4' WITH HEALED BLAZE AND SIGN (1975)
A 36" CEDAR BEARS N 72° E, 198.2' WITH HEALED BLAZE (1975)
(SET CHAINING NAIL AT SIDE CENTER, BT SIGNS ON FRONT AND REAR, AND PAINTED RED BAND FOR EXISTING BT'S)

ESTABLISHED THE FOLLOWING:
A 29" FIR BEARS S 38° E, 31.9' MKD: C S 1/16 S11 BT
(SET CHAINING NAIL AT SIDE CENTER, BT SIGNS ON FRONT AND BACK AND PAINTED RED BAND FOR NEW BT)

208—FOUND MONUMENT

CORNER J-21, (GCDB 600500)
CORNER OF SECTIONS 11, 12, 13 & 14 T. 24 S., R. 06 W., W.M.

APRIL 7, 1853 (ORIGINAL)
ROBERT ELDER AND HENRY GILE, DEPUTY SURVEYORS
(DCSO RECORDS VOLUME 8, PAGE 3138)
SET POST CORNER TO SECTIONS 11, 12, 13 & 14, FROM WHICH:
A Y.OAK 13" DIA., BEARS N 52-1/2° W, 120 LKS. DIST.
A Y.OAK 16" DIA., BEARS N 73° E, 72 LKS. DIST.
A Y.OAK 12" DIA., BEARS S 38° W, 25 LKS. DIST.
A Y.OAK 17" DIA., BEARS S 79° E, 48 LKS. DIST.

AUGUST 13, 1970
DOUGLAS COUNTY SURVEYORS OFFICE
VERNON RAY TRACY & V. PERRON, CREW
(C.S. FILE 52/102-8)
FOUND:
ORIG. 16" NOW 24" W.OAK, ALIVE, N 73° E, 47.5', SHOWS FAINT SCAR
ORIG. 12" NOW 20" W.OAK, ALIVE, S 38° W, 16.5', OPEN WITH REVERSE SCRIBE
ORIG. 17" NOW 25" W.OAK, ALIVE, S 79° E, 31.7', PREVIOUSLY OPENED, NEARLY REHEALED, RESCRIBED S13 ABOVE SCAR
NW ORIG. BT, DOWN AND BADLY DECAYED
SET BRASS CAP AT CORNER MKD:
COUNTY SURVEYORS OFFICE T24S R6W S11 S12 S13 S14 1970
NEW BT'S:
A 13" W.OAK BEARS S 8° E, 25.0' MKD: T24S R6W S13 CS BT
A 12" D.FIR BEARS N 66° E, 22.8' MKD: T24S R6W S12 CS BT
A 9" W.OAK BEARS N 20° W, 29.1' MKD: T24S R6W S11 CS BT
A 50" D.FIR BEARS S 56° W, 12.3' BARKS SCRIBED: T24S R6W S14 CS BT
CORNER LIES ON WEST SLOPE IN OAK, LAUREL AND SCATTERED FIR

SEPTEMBER 5, 1973 — AUGUST 19, 1975
BLM DEPENDENT RESURVEY
BY DANIEL L. BERRY, CHARLES E. AKIN JR, AND GLENN S. BAUGHMAN
UNDER GROUP NO. 826 AND 856
UNDER CONTRACT NO. 52500-CT5-1116
(DCSO RECORDS VOLUME 37, PAGE 15236)
THE CORNER OF SECTIONS 11, 12, 13 & 14, PERPETUATED AND RECORDED BY VERNON R. TRACY, DEPUTY SURVEYOR, IN 1970, MONUMENTED WITH AN IRON POST, 1-1/2" DIA., FIRMLY SET, PROJECTING 12" ABOVE GROUND WITH BRASS CAP MKD: COUNTY SURVEYORS OFFICE T24S S11 S12 S13 S14 R6W 1970
FROM WHICH THE REMAINS OF THE ORIGINAL BEARING TREES:
A WHITE OAK, 25" DIA., BEARS N 73° E, 72 LKS. DIST., WITH HEALED BLAZE
A WHITE OAK, 24" DIA., BEARS S 79° E, 48 LKS. DIST., WITH HEALED BLAZE
A WHITE OAK 20" DIA., BEARS S 38° W, 25 LKS. DIST., WITH FRAGMENTARY SCRIBE MARKS VISIBLE ON PARTIALLY HEALED BLAZE
AND BEARING TREES MKD. BY TRACY:
A FIR 13" DIA., BEARS N 66° E, 35 LKS. DIST., WITH HEALED BLAZE
A WHITE OAK 15" DIA., BEARS S 9° E, 38 LKS. DIST., WITH SCRIBE MARKS:
T24S R6W S13 CS BT VISIBLE ON PARTIALLY HEALED BLAZE
A FIR 50" DIA., BEARS S 54° W, 19 LKS. DIST., WITH SCRIBE MARKS:
T24S R6W S14 CS BT VISIBLE ON BARK
A WHITE OAK 9" DIA., BEARS N 20° W, 44 LKS. DIST., WITH SCRIBE MARKS:
T24S R6W S11 CS BT VISIBLE ON PARTIALLY HEALED BLAZE
CORNER IS LOCATED ON A SPUR, SLOPES WEST.

AUGUST 3, 2023
GARRETT FINCH AND CREW WITH MINISTER AND GLAESER SURVEYING
FOUND 2-1/2" COUNTY SURVEYORS BRASS CAP, 1.4" ABOVE GROUND FROM WHICH:
A 23" OAK BEARS S 38° W, 16.5' WITH PARTIALLY HEALED BLAZE (1853)
A 55" FIR SNAG BEARS S 50° W, 12.1' WITH ILLIGIBLE BARK SCRIBE (1970)
A 12" OAK BEARS N 20° W, 29.5' WITH HEALED BLAZE AND SIGN (1970)
A 25" FIR BEARS N 66° E, 23.1' WITH HEALED BLAZE AND SIGN (1970)
A 16" OAK BEARS S 8° E, 25.2' WITH HEALED BLAZE AND SIGN (1970)
A ROOTHOLE BEARS N 73° E, 49.3' WITH OAK TRUNK ALONGSIDE (1853)
(SET CHAINING NAIL AT SIDE CENTER, BT SIGNS ON FRONT AND REAR, AND PAINTED RED BAND FOR EXISTING BT'S)

209—FOUND MONUMENT

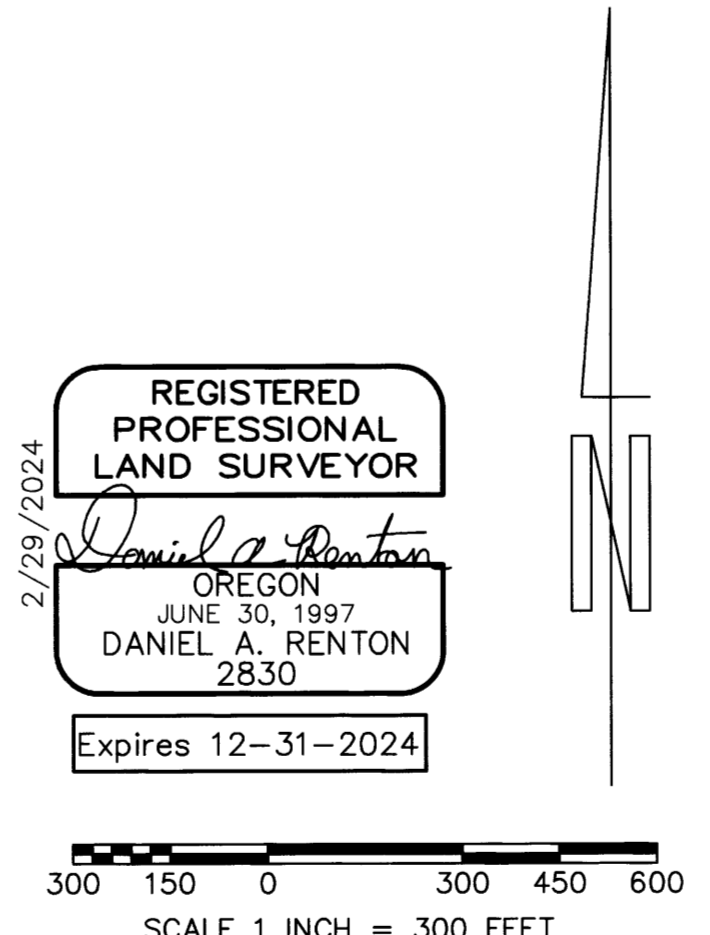
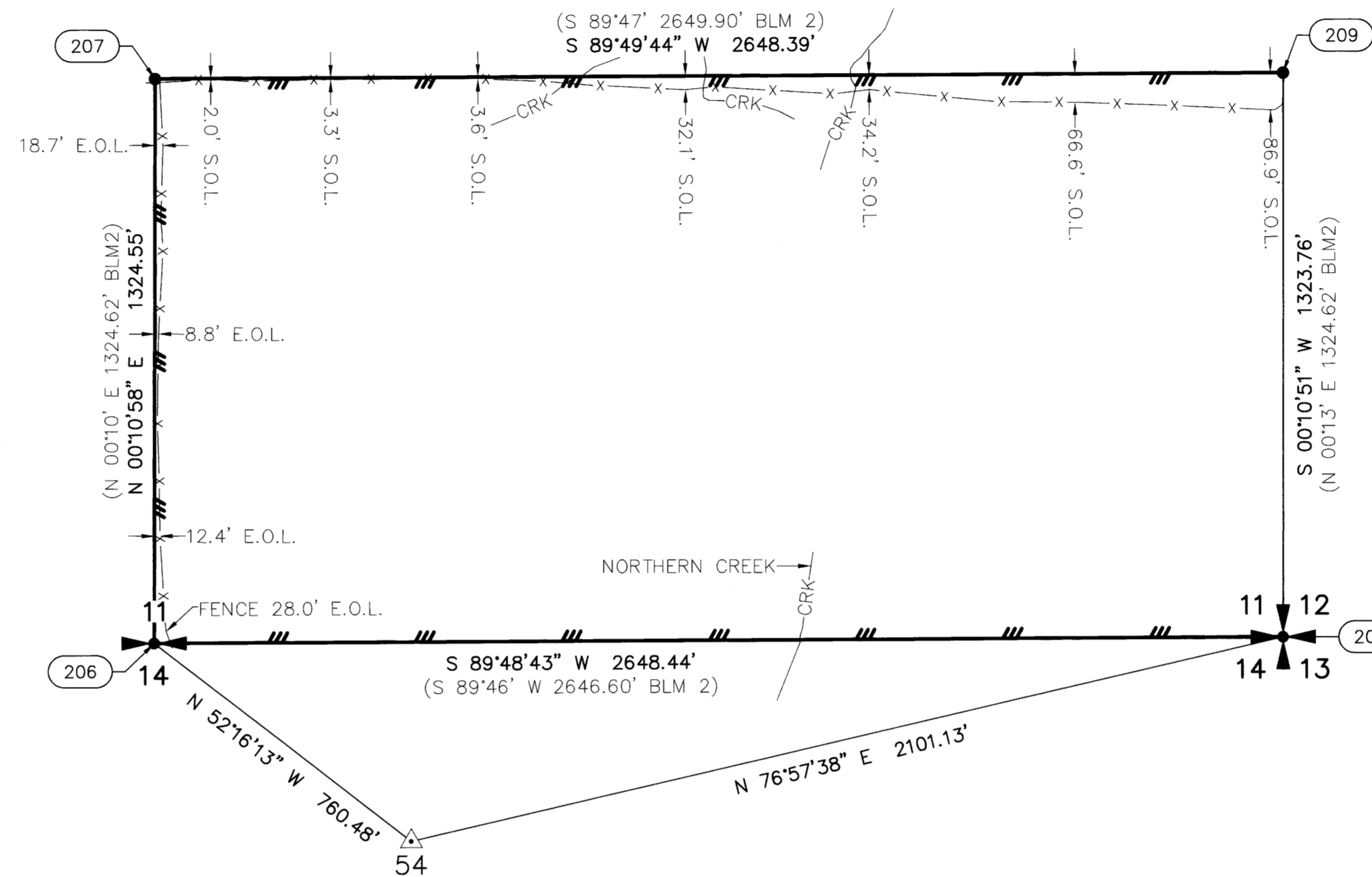
CORNER H-21, (GCDB 600520)
S 1/16 CORNER OF SECTIONS 11 & 12 T. 24 S., R. 06 W., W.M.

SEPTEMBER 5, 1973 — AUGUST 19, 1975
BLM DEPENDENT RESURVEY
BY DANIEL L. BERRY, CHARLES E. AKIN JR, AND GLENN S. BAUGHMAN
UNDER GROUP NO. 826 AND 856
UNDER CONTRACT NO. 52500-CT5-1116
(DCSO RECORDS VOLUME 37, PAGE 5238)
POINT FOR THE S 1/16 SECTION CORNER OF SECTIONS 11 & 12,
SET AND IRON POST, 28" LONG, 2-1/2" DIA., 24" IN THE GROUND, WITH BRASS CAP MKD: S 1/16 S11 S12 1973
FROM WHICH:
A FIR 15" DIA., BEARS N 61° E, 39 LKS. DIST. MKD: S 1/16 S12 BT
A WHITE OAK 7" DIA., BEARS N 42° W, 30 LKS. DIST. MKD: S 1/16 S11 BT

AUGUST 3, 2023
GARRETT FINCH AND CREW WITH MINISTER AND GLAESER SURVEYING
FOUND 3-1/4" BLM BRASS CAP, 0.5" ABOVE GROUND FROM WHICH:
A NORTH/SOUTH WIRE FENCE BEARS EAST 1.3'
A ROOTHOLE BEARS N 42° W, 19.8' (1973)

ESTABLISHED THE FOLLOWING:
AN 8" FIR BEARS N 66° W, 16.3' MKD: S 1/16 S11 BT
A 9" OAK BEARS S 32° E, 18.2' MKD: S 1/16 S12 BT
(SET CHAINING NAIL AT SIDE CENTER, BT SIGNS ON FRONT AND BACK AND PAINTED RED BAND FOR NEW BT)

MONUMENT TABLE			
POINT NO.	NORTHING	EASTING	DESCRIPTION
206	239458.00	152650.11	3-1/4" BRASS DISK
207	240782.54	152654.33	3-1/4" BRASS DISK
208	239466.69	155298.53	2-1/2" BRASS DISK
209	240790.44	155302.71	3-1/4" BRASS DISK



REGISTERED PROFESSIONAL LAND SURVEYOR
2/29/2024
Daniel A. Renton
OREGON
JUNE 30, 1997
DANIEL A. RENTON
2830
Expires 12-31-2024

RECORD OF SURVEY

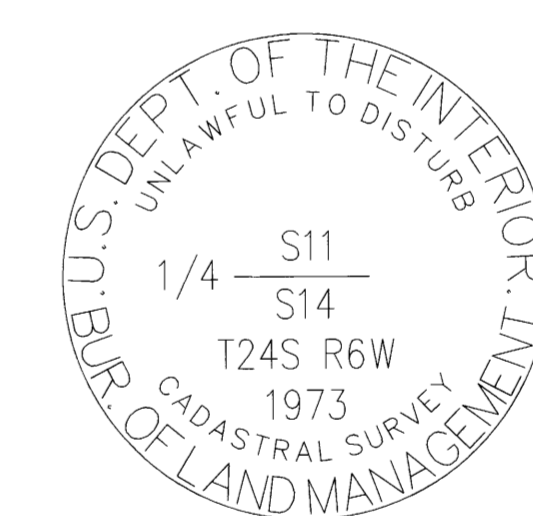
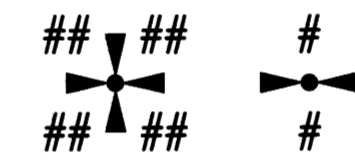
LOCATED IN A PORTION OF
GOV'T LOTS 3 & 4 IN THE NW 1/4 OF SECTION 5
THE SW 1/4, SE 1/4 OF THE SE 1/4 OF SECTION 11
THE NE 1/4, SE 1/4 OF THE NW 1/4 OF SECTION 15
T. 24 S., R. 6 W., W.M.
MEAN MUSTARD & GALLAGHER CANYON 1—TASK A
DOUGLAS COUNTY, OREGON
CONTRACT NO. 1204T020D0010
TASK ORDER NO. 140L4322F0063

FILED
DATE: 9-11-2024 BY: [Signature]
THIS SURVEY CONSISTS OF:
MAP: M185-6 A-D
NARRATIVE:
CORNER RPT:
DOUGLAS COUNTY SURVEYOR

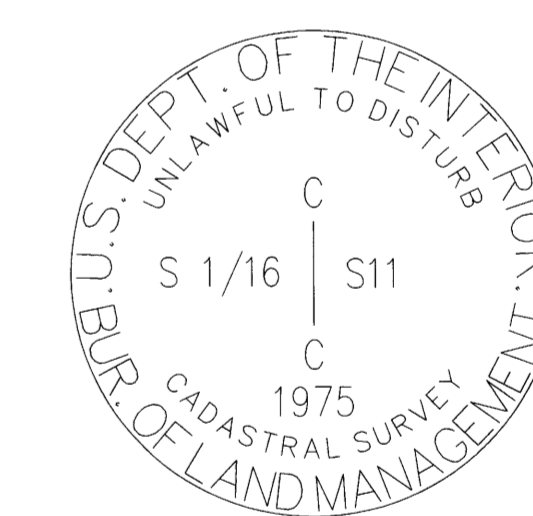
LEGEND:

- INDICATES MONUMENT FOUND AS NOTED IN TABLES
- ⊙ INDICATES 5/8" X 30" REBAR WITH 2" ALUMINUM CAP, SET SEE MONUMENT DETAILS SHEET 2
- △ INDICATES MGS CONTROL POINT SEE CONTROL TABLE, SHEET 1
- (S#) INDICATES RECORD DATA PER SURVEY REFERENCE NUMBER
- (BLM#) INDICATES RECORD DATA PER BUREAU OF LAND MANAGEMENT NUMBER
- T. INDICATES TOWNSHIP
- R. INDICATES RANGE
- SEC. INDICATES SECTION
- GLO INDICATES GENERAL LAND OFFICE
- BT INDICATES BEARING TREE
- CH INDICATES CHAINS (1 CHAIN=66 FEET)
- LKS INDICATES LINKS (1 LINK=0.66 FEET)
- W/ INDICATES WITH
- RPC INDICATES RED PLASTIC CAP
- ALUM. INDICATES ALUMINUM
- CONT. INDICATES CONTINUED
- N.O.L. INDICATES NORTH OF LINE
- E.O.L. INDICATES EAST OF LINE
- S.O.L. INDICATES SOUTH OF LINE
- W.O.L. INDICATES WEST OF LINE
- — — INDICATES BOUNDARY LINE, MARKED AND POSTED
- — — INDICATES SECTION SUBDIVISION
- CRK — INDICATES CENTERLINE OF CREEK
- — — INDICATES CENTERLINE OF ROAD
- x - x - INDICATES FENCE LINE

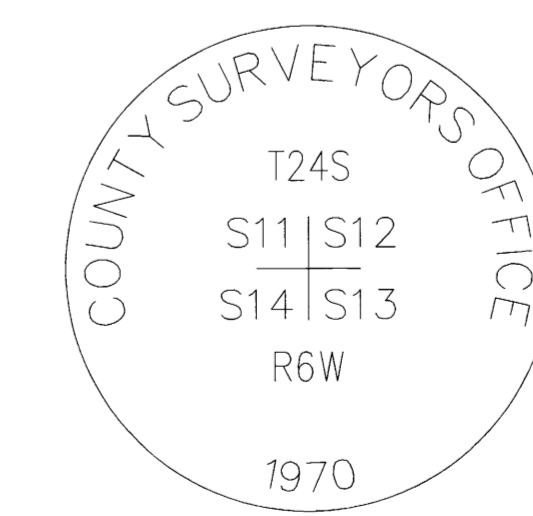
PLSS CORNERS



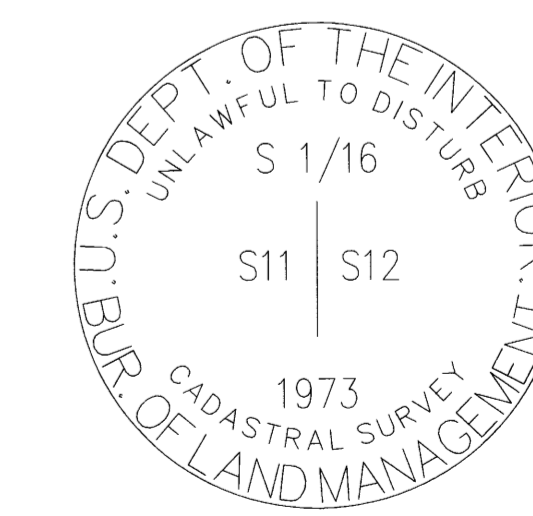
POINT NUMBER: 206



POINT NUMBER: 207



POINT NUMBER: 208



POINT NUMBER: 209

BLM REFERENCES:
2) (1975) BUREAU OF LAND MANAGEMENT RESURVEY AND NOTES FOR T. 24 S., R. 6 W., W.M.
EXECUTED BY DANIEL L. BERRY, CHARLES E. AKIN, GLENN S. BAUGHMAN
GROUP #826 & #856 — CONTRACT #52500-CT5-1116
COMMENCED 9/5/1973 — COMPLETED 8/19/1975
DEPENDENT RESURVEY DATED 8/18/1977 (5590)

MINISTER—GLAESER SURVEYING INC.
 2200 E. EVERGREEN BLVD.
 VANCOUVER, WA 98661
 (360) 694-3313

SCALE: 1"=300'
JOB NO. 22-319
DATE: 2/29/2024
CALC BY: DAR
DRAWN BY: RDH
CHECKED BY: DAR
SHEET 4 OF 4