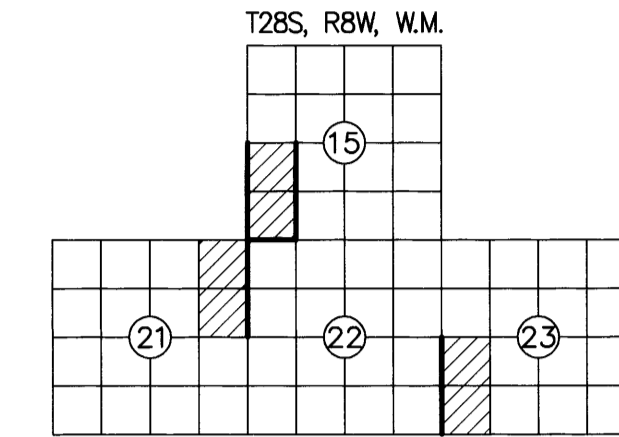


RECORD OF SURVEY

FILED
 DATE: 2-11-2024 BY: *DA*
 THIS SURVEY CONSISTS OF:
 MAP: M185-4A
 NARRATIVE:
 CORNER RPT:
 DOUGLAS COUNTY SURVEYOR

LOCATED IN A PORTION OF
 THE SW 1/4 OF SECTION 15
 THE NE 1/4 OF SECTION 21
 THE SW 1/4 OF SECTION 23
 T. 28 S., R. 8 W., W.M.
 RESTON PIECES-TASK 1
 DOUGLAS COUNTY, OREGON
 CONTRACT NO. 1204T020D0010
 TASK ORDER NO. 140L4322F0063



NARRATIVE:

THE PURPOSE OF THIS SURVEY WAS TO FULFILL THE CONTRACT (1204T020D0010/140L4322F0063) REQUIREMENTS FOR RESTON PIECES - TASK 1 CADASTRAL SURVEY AS LISTED BELOW:

- SECTION 15, T. 28 S., R. 8 W., W.M.
- SECTION 21, T. 28 S., R. 8 W., W.M.
- SECTION 23, T. 28 S., R. 8 W., W.M.

LOCATION OF PROJECT:

THIS PROJECT IS LOCATED APPROXIMATELY 16 MILES SOUTHWEST OF ROSEBURG, AND 1.2 MILES SOUTHWEST OF COOS BAY WAGON RD AND RESTON RD, DOUGLAS COUNTY, OREGON.

GENERAL NOTES:

THIS CONTRACT IS FOR BOUNDARY LINE MARKING/POSTING AND BOUNDARY LINE MAINTENANCE. WE COMPLETED THE MAINTENANCE OF 8 CORNERS, AND SURVEYED AND POSTED 2.25 MILES OF BOUNDARY.

ALL BOUNDARY WORK COMPLIED WITH THE SURVEY SPECIFICATIONS AND PROCEDURES OUTLINED IN THE BUREAU OF LAND MANAGEMENT MANUAL OF SURVEYING INSTRUCTIONS (2009). ALL CORNERS WERE MAINTAINED TO THE SPECIFICATIONS CONTAINED IN SECTION C OF THE R6 2020 CADASTRAL SURVEY IDIQ STANDARDS. SURVEY AND LAND RECORDS RESEARCH WAS PERFORMED TO VERIFY THE CHAIN OF SURVEY AT EACH CORNER PRIOR TO MAINTAINING THE CORNERS AND MARKING AND POSTING THE BOUNDARIES. BOUNDARY DELINEATOR POSTS AND SIGNS (SEE EXAMPLE SIGNS BELOW) WERE SET ALONG THE BOUNDARY WHERE GAPS IN THE EXISTING POSTING ARE FOUND AND THE BOUNDARY LINE BLAZING WAS ADDED OR REFRESHED. SIGNS OF ENCROACHMENT AND/OR TRESPASS WERE NOT FOUND.

THE EXISTING MONUMENTS SHOWN HEREIN WERE FOUND AT ACCEPTABLE POSITIONS, WERE MONUMENTED PROPERLY AND STANDARD CORNER MAINTENANCE WAS PERFORMED.

ALL CORNER SEARCH AND EVALUATION WAS PERFORMED BY DANIEL RENTON, PLS 2830. THE PROJECT AREA IS ACCESSED BY COUNTY ROADS, PRIVATE ROADS AND OTHER FOREST ROADS.

ALL NECESSARY SIGNS AND POSTS WERE PROVIDED BY THE BUREAU OF LAND MANAGEMENT.

THE BEARINGS SHOWN HEREIN FOR BEARING TREES WERE MEASURED USING A BRUNTON GEO TRANSIT COMPASS (MAGNETIC DECLINATION=15' EAST)

THE DISTANCES AND DIAMETERS SHOWN HEREIN FOR BEARING TREES WERE MEASURED USING A STEEL LOGGERS TAPE.

TASK AND CORNERS MAINTAINED:

- SECTION 15, T. 28 S., R. 8 W., W.M.
- TIE POSITIONS, VERIFY AND MAINTAIN THE FOLLOWING CORNERS:
 MONUMENT 207, CORNER N-13, (GCDB 400400) CORNER OF SECTIONS 15, 16, 21 & 22
 MONUMENT 208, (GCDB 420400) W 1/16 CORNER OF SECTIONS 15 & 22
 MONUMENT 210, (GCDB 420440) C-W 1/16 CORNER OF SECTION 15
 MONUMENT 211, CORNER L-13, (GCDB 400440) 1/4 CORNER OF SECTIONS 15 & 16
 - SURVEY LINE, MARK AND POST BOUNDARY SHOWN HEREIN

- SECTION 21, T. 28 S., R. 8 W., W.M.
- TIE POSITIONS, VERIFY AND MAINTAIN THE FOLLOWING CORNERS:
 MONUMENT 209, CORNER P-13, (GCDB 400340) 1/4 CORNER OF SECTIONS 21 & 22
 MONUMENT 212, (NOT IN CONTRACT, SHOWN FOR REFERENCE ONLY)
 - SURVEY LINE, MARK AND POST BOUNDARY SHOWN HEREIN

- SECTION 23, T. 28 S., R. 8 W., W.M.
- TIE POSITIONS, VERIFY AND MAINTAIN THE FOLLOWING CORNERS:
 MONUMENT 204, CORNER R-17, (GCDB 500300) CORNER OF SECTIONS 22, 23, 26 & 27
 MONUMENT 205, (GCDB 500320) S 1/16 CORNER OF SECTIONS 22 & 23
 MONUMENT 206, CORNER R-17, (GCDB 500340) 1/4 CORNER OF SECTIONS 22 & 23
 - SURVEY LINE, MARK AND POST BOUNDARY SHOWN HEREIN

SURVEY FOR: UNITED STATES DEPARTMENT OF THE INTERIOR BUREAU OF LAND MANAGEMENT
 ROSEBURG DISTRICT OFFICE
 777 NW GARDEN VALLEY BLVD
 ROSEBURG, OR 97471

SHEET INDEX

- SHEET 1 VICINITY MAP, EQUIPMENT LIST, CONTROL DIAGRAM AND TABLE, CONTROL PROCEDURE, CERTIFICATES, POSTED SIGNS AND NARRATIVE
 SHEET 2 SITE DETAILS, FOUND MONUMENT COORDINATE TABLE, REFERENCES, LEGEND AND MONUMENT DETAILS
 SHEET 3 CORNER HISTORY

EQUIPMENT LIST:

- 2018 GMC SIERRA 2500HD SURVEY TRUCK
- TRIMBLE R12 GNSS BASE RECEIVER
- TRIMBLE R12i GNSS ROVER RECEIVER
- TRIMBLE S7 3" TOTAL STATION
- BRUNTON GEO TRANSIT COMPASS FOR BT'S (MAGNETIC DECLINATION=15' EAST)
- TRIMBLE TDL 450HX 35-WATT RADIO
- TRIMBLE TSC5 DATA COLLECTOR WITH TRIMBLE ACCESS SOFTWARE
- AUTODESK CIVIL 3D 2023
- TRIMBLE BUSINESS CENTER
- STAR-NET LEAST SQUARES ADJUSTMENT SOFTWARE

BASIS OF BEARING: S 61°29'12" E ALONG THE CONTROL LINE BETWEEN (MGS CONTROL POINT 53) AND (MGS CONTROL POINT 54)
 OREGON COORDINATE REFERENCE SYSTEM (OCRS), COTTAGE GROVE-CANYONVILLE ZONE, INTERNATIONAL FEET.

CONTROL PROCEDURE:

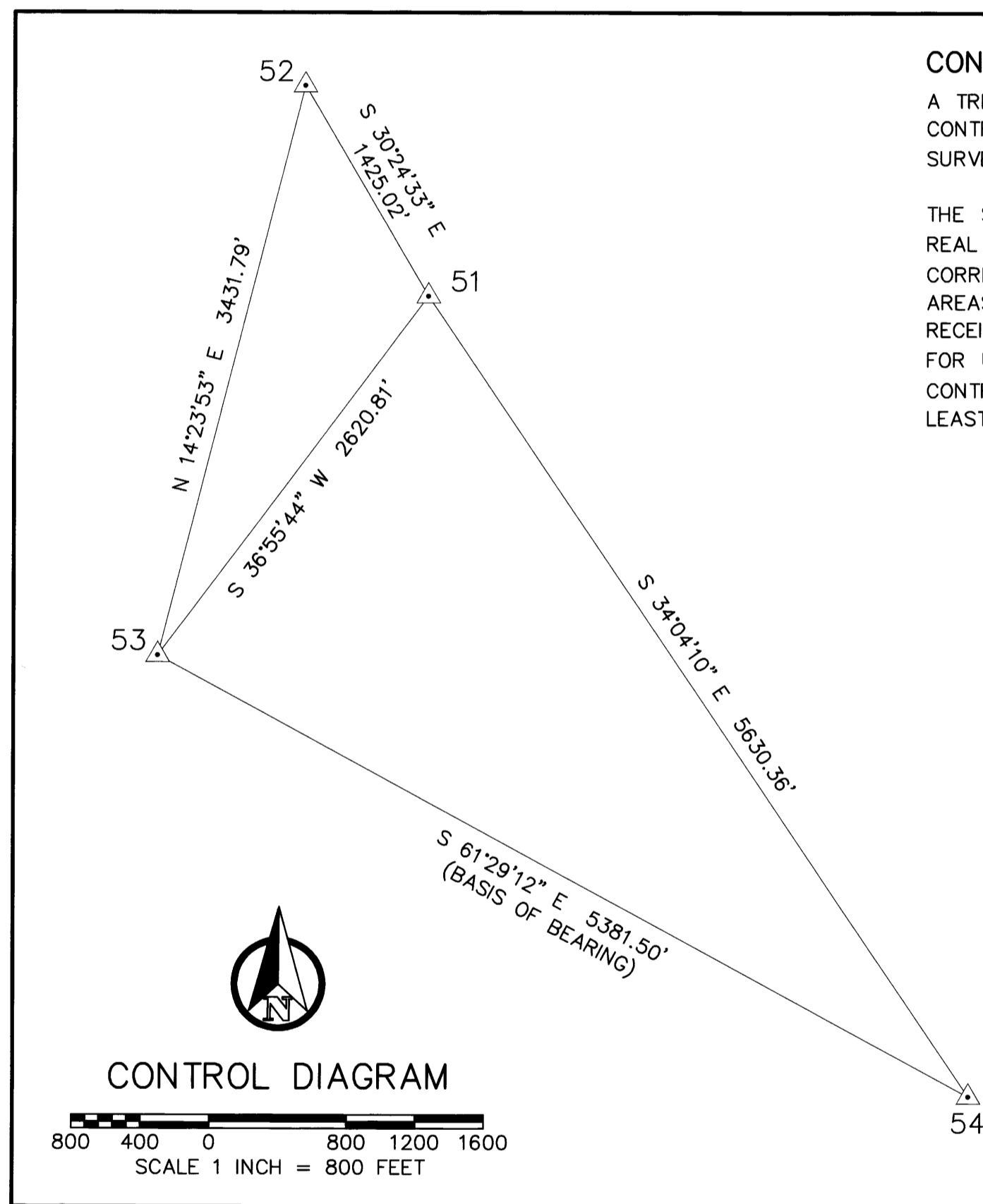
A TRIMBLE R12 GNSS BASE RECEIVER WAS USED TO COLLECT OVER 8 HOURS OF STATIC DATA ON THE PRIMARY CONTROL POINTS 51, 52, 53 & 54. THE STATIC DATA WAS THEN POST PROCESSED USING THE NATIONAL GEODETIC SURVEY ONLINE POSITIONING USER SERVICE (OPUS).

THE SECONDARY CONTROL WAS ESTABLISHED BY USING A TRIMBLE R12 GNSS BASE RECEIVER OPERATING IN A REAL TIME KINEMATIC (RTK) MODE AND SET ON THE PRIMARY OPUS CONTROL WHILE TRANSMITTING REAL TIME CORRECTIONS TO A TRIMBLE R12i GNSS RECEIVER ALSO OPERATING IN A REAL TIME KINEMATIC (RTK) MODE. IN AREAS OF MINIMAL TREE CANOPY, THE MONUMENTS WERE TIED DIRECTLY USING A TRIMBLE R12i GNSS ROVER WHILE RECEIVING CORRECTIONS FROM PRIMARY CONTROL POINTS. IN AREAS WHERE THE TREE CANOPY WAS TOO DENSE FOR USING A TRIMBLE R12i GNSS ROVER (RTK), A CLOSED LOOP TRAVERSE WAS RUN OFF OF THE SECONDARY CONTROL USING A TRIMBLE S7 3" TOTAL STATION. EACH CONTROL TRAVERSE WAS BALANCED USING STAR-NET LEAST SQUARES ADJUSTMENT SOFTWARE.

POINT NO.	NORTHING	EASTING	ELEV	DESCRIPTION
51	109220.02	83600.04	992.93	5/8" IR W/ YPC "RENTON PLS2830"
52	110449.01	82878.73	1004.35	1/2" IR W/ RPC "MGS CONTROL"
53	107125.00	82025.40	1403.22	5/8" IR W/ RPC "MGS CONTROL"
54	104556.07	86754.16	1142.29	5/8" IR W/ 2" ALUM. CAP "RESTON 4 2023"

LEGEND:

△ INDICATES MGS CONTROL POINT



CONTROL DIAGRAM

SCALE 1 INCH = 800 FEET

UNITED STATES DEPARTMENT OF THE INTERIOR
 BUREAU OF LAND MANAGEMENT

BOUNDARY

NO TIMBER MAY BE CUT OR REMOVED WITHOUT AUTHORIZATION

T. R. SEC. LINE IS APPROX. FT.
 CORNER IS APPROX. FT.
 POSTED BY DATE
 BLM OFFICE IS LOCATED AT

UNITED STATES DEPARTMENT OF THE INTERIOR
 BUREAU OF LAND MANAGEMENT

BEARING TREE

IT IS UNLAWFUL TO DESTROY, DEFACE, CHANGE OR REMOVE ANY CORNER OF THE PUBLIC LAND SURVEYS OR TO CUT DOWN OR DEFACE ANY BEARING TREE PERTAINING TO SUCH SURVEYS.

CORNER IS APPROXIMATELY DISTANCE DIRECTION
 T. R. SEC. POSTED BY DATE

LAND SURVEY MONUMENT

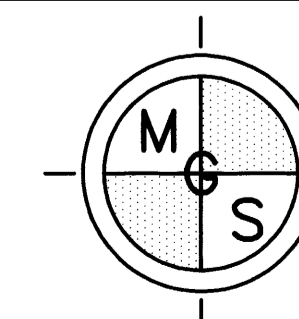
PLEASE DO NOT DISTURB

THIS MONUMENT WAS LOCATED AS PART OF AN OFFICIAL LAND SURVEY. IT HELPS DEFINE LAND OWNERSHIP LINES.

FOR FURTHER INFORMATION CONTACT THE BUREAU OF LAND MANAGEMENT

REGISTERED PROFESSIONAL LAND SURVEYOR
 OREGON
 JUNE 30, 1997
 DANIEL A. RENTON
 2830
 Expires 12-31-2024

MINISTER AND GLAESER SURVEYING, INC. MAKES NO WARRANTIES AS TO MATTERS OF UNWRITTEN TITLE SUCH AS ADVERSE POSSESSION, ACQUIESCENCE, ESTOPPEL, ETC.



MINISTER-GLAESER SURVEYING INC.
 2200 E. EVERGREEN BLVD.
 VANCOUVER, WA 98661
 (360) 694-3313

SCALE: 1"=800'
 JOB NO. 22-319
 DATE: 2/29/2024
 CALC BY: DAR
 DRAWN BY: RDH
 CHECKED BY: DAR
 SHEET 1 OF 3