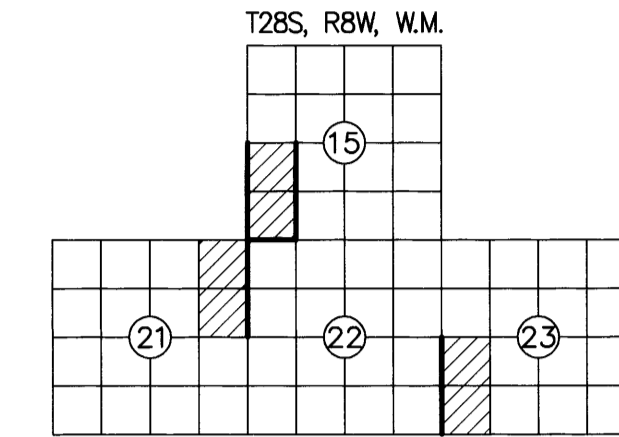


RECORD OF SURVEY

FILED
 DATE: 2-11-2024 BY: [Signature]
 THIS SURVEY CONSISTS OF:
 MAP: M185-4A
 NARRATIVE:
 CORNER RPT:
 DOUGLAS COUNTY SURVEYOR

LOCATED IN A PORTION OF THE SW 1/4 OF SECTION 15 THE NE 1/4 OF SECTION 21 THE SW 1/4 OF SECTION 23 T. 28 S., R. 8 W., W.M. RESTON PIECES-TASK 1 DOUGLAS COUNTY, OREGON CONTRACT NO. 1204T020D0010 TASK ORDER NO. 140L4322F0063



NARRATIVE:

THE PURPOSE OF THIS SURVEY WAS TO FULFILL THE CONTRACT (1204T020D0010/140L4322F0063) REQUIREMENTS FOR RESTON PIECES - TASK 1 CADASTRAL SURVEY AS LISTED BELOW:

- SECTION 15, T. 28 S., R. 8 W., W.M.
- SECTION 21, T. 28 S., R. 8 W., W.M.
- SECTION 23, T. 28 S., R. 8 W., W.M.

LOCATION OF PROJECT:

THIS PROJECT IS LOCATED APPROXIMATELY 16 MILES SOUTHWEST OF ROSEBURG, AND 1.2 MILES SOUTHWEST OF COOS BAY WAGON RD AND RESTON RD, DOUGLAS COUNTY, OREGON.

GENERAL NOTES:

THIS CONTRACT IS FOR BOUNDARY LINE MARKING/POSTING AND BOUNDARY LINE MAINTENANCE. WE COMPLETED THE MAINTENANCE OF 8 CORNERS, AND SURVEYED AND POSTED 2.25 MILES OF BOUNDARY.

ALL BOUNDARY WORK COMPLIED WITH THE SURVEY SPECIFICATIONS AND PROCEDURES OUTLINED IN THE BUREAU OF LAND MANAGEMENT MANUAL OF SURVEYING INSTRUCTIONS (2009). ALL CORNERS WERE MAINTAINED TO THE SPECIFICATIONS CONTAINED IN SECTION C OF THE R6 2020 CADASTRAL SURVEY IDIQ STANDARDS. SURVEY AND LAND RECORDS RESEARCH WAS PERFORMED TO VERIFY THE CHAIN OF SURVEY AT EACH CORNER PRIOR TO MAINTAINING THE CORNERS AND MARKING AND POSTING THE BOUNDARIES. BOUNDARY DELINEATOR POSTS AND SIGNS (SEE EXAMPLE SIGNS BELOW) WERE SET ALONG THE BOUNDARY WHERE GAPS IN THE EXISTING POSTING ARE FOUND AND THE BOUNDARY LINE BLAZING WAS ADDED OR REFRESHED. SIGNS OF ENCROACHMENT AND/OR TRESPASS WERE NOT FOUND.

THE EXISTING MONUMENTS SHOWN HEREIN WERE FOUND AT ACCEPTABLE POSITIONS, WERE MONUMENTED PROPERLY AND STANDARD CORNER MAINTENANCE WAS PERFORMED.

ALL CORNER SEARCH AND EVALUATION WAS PERFORMED BY DANIEL RENTON, PLS 2830. THE PROJECT AREA IS ACCESSED BY COUNTY ROADS, PRIVATE ROADS AND OTHER FOREST ROADS.

ALL NECESSARY SIGNS AND POSTS WERE PROVIDED BY THE BUREAU OF LAND MANAGEMENT.

THE BEARINGS SHOWN HEREIN FOR BEARING TREES WERE MEASURED USING A BRUNTON GEO TRANSIT COMPASS (MAGNETIC DECLINATION=15' EAST)

THE DISTANCES AND DIAMETERS SHOWN HEREIN FOR BEARING TREES WERE MEASURED USING A STEEL LOGGERS TAPE.

TASK AND CORNERS MAINTAINED:

- SECTION 15, T. 28 S., R. 8 W., W.M.
- TIE POSITIONS, VERIFY AND MAINTAIN THE FOLLOWING CORNERS: MONUMENT 207, CORNER N-13, (GCDB 400400) CORNER OF SECTIONS 15, 16, 21 & 22 MONUMENT 208, (GCDB 420400) W 1/16 CORNER OF SECTIONS 15 & 22 MONUMENT 210, (GCDB 420440) C-W 1/16 CORNER OF SECTION 15 MONUMENT 211, CORNER L-13, (GCDB 400440) 1/4 CORNER OF SECTIONS 15 & 16
 - SURVEY LINE, MARK AND POST BOUNDARY SHOWN HEREIN

SECTION 21, T. 28 S., R. 8 W., W.M.

- TIE POSITIONS, VERIFY AND MAINTAIN THE FOLLOWING CORNERS: MONUMENT 209, CORNER P-13, (GCDB 400340) 1/4 CORNER OF SECTIONS 21 & 22 MONUMENT 212, (NOT IN CONTRACT, SHOWN FOR REFERENCE ONLY)
- SURVEY LINE, MARK AND POST BOUNDARY SHOWN HEREIN

SECTION 23, T. 28 S., R. 8 W., W.M.

- TIE POSITIONS, VERIFY AND MAINTAIN THE FOLLOWING CORNERS: MONUMENT 204, CORNER R-17, (GCDB 500300) CORNER OF SECTIONS 22, 23, 26 & 27 MONUMENT 205, (GCDB 500320) S 1/16 CORNER OF SECTIONS 22 & 23 MONUMENT 206, CORNER R-17, (GCDB 500340) 1/4 CORNER OF SECTIONS 22 & 23
- SURVEY LINE, MARK AND POST BOUNDARY SHOWN HEREIN

SURVEY FOR: UNITED STATES DEPARTMENT OF THE INTERIOR BUREAU OF LAND MANAGEMENT ROSEBURG DISTRICT OFFICE 777 NW GARDEN VALLEY BLVD ROSEBURG, OR 97471

SHEET INDEX

- SHEET 1 VICINITY MAP, EQUIPMENT LIST, CONTROL DIAGRAM AND TABLE, CONTROL PROCEDURE, CERTIFICATES, POSTED SIGNS AND NARRATIVE
- SHEET 2 SITE DETAILS, FOUND MONUMENT COORDINATE TABLE, REFERENCES, LEGEND AND MONUMENT DETAILS
- SHEET 3 CORNER HISTORY

EQUIPMENT LIST:

- 2018 GMC SIERRA 2500HD SURVEY TRUCK
- TRIMBLE R12 GNSS BASE RECEIVER
- TRIMBLE R12i GNSS ROVER RECEIVER
- TRIMBLE S7 3" TOTAL STATION
- BRUNTON GEO TRANSIT COMPASS FOR BT'S (MAGNETIC DECLINATION=15' EAST)
- TRIMBLE TDL 450HX 35-WATT RADIO
- TRIMBLE TSC5 DATA COLLECTOR WITH TRIMBLE ACCESS SOFTWARE
- AUTODESK CIVIL 3D 2023
- TRIMBLE BUSINESS CENTER
- STAR-NET LEAST SQUARES ADJUSTMENT SOFTWARE

BASIS OF BEARING: S 61°29'12" E ALONG THE CONTROL LINE BETWEEN (MGS CONTROL POINT 53) AND (MGS CONTROL POINT 54) OREGON COORDINATE REFERENCE SYSTEM (OCRS), COTTAGE GROVE-CANYONVILLE ZONE, INTERNATIONAL FEET.

CONTROL PROCEDURE:

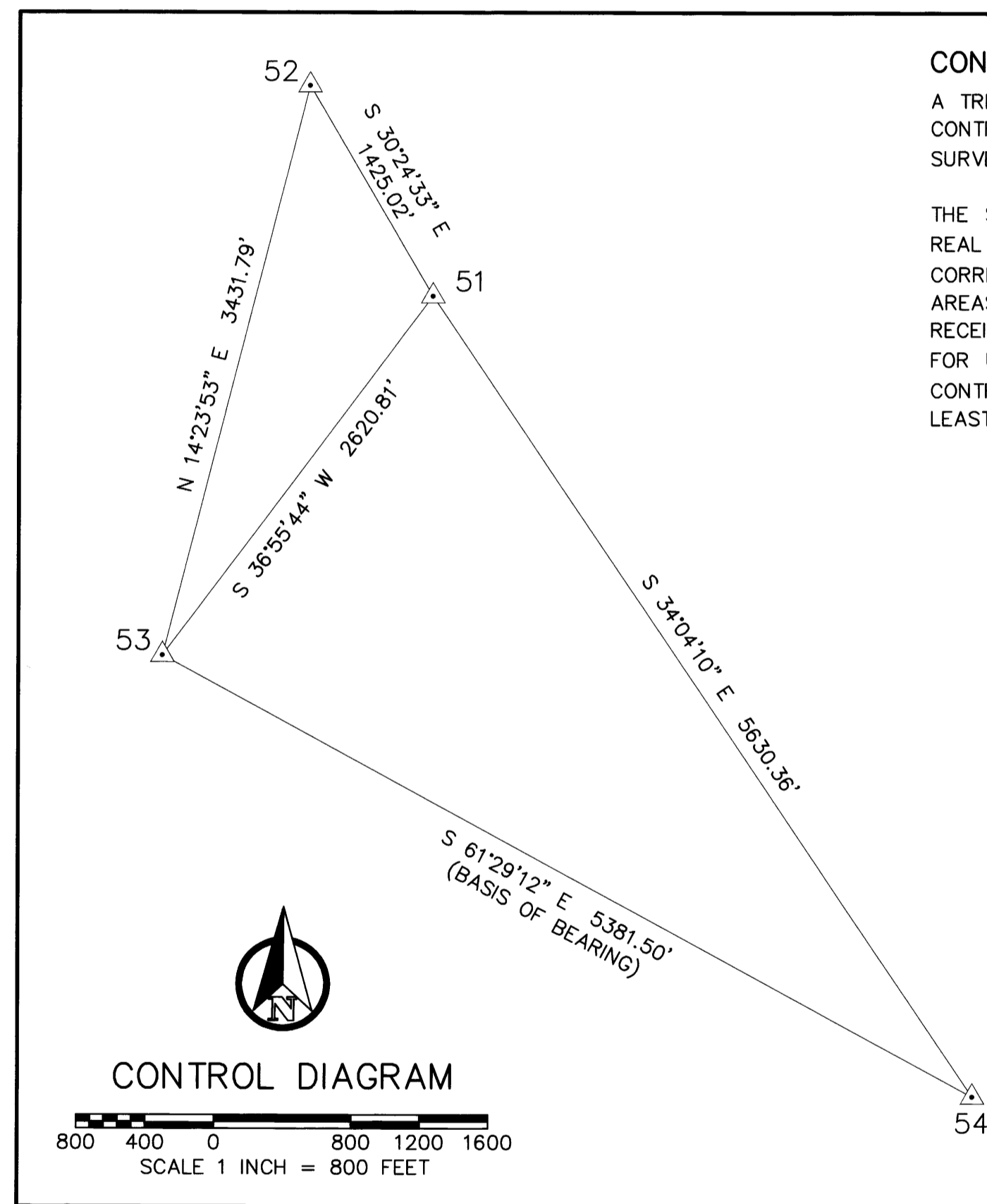
A TRIMBLE R12 GNSS BASE RECEIVER WAS USED TO COLLECT OVER 8 HOURS OF STATIC DATA ON THE PRIMARY CONTROL POINTS 51, 52, 53 & 54. THE STATIC DATA WAS THEN POST PROCESSED USING THE NATIONAL GEODETIC SURVEY ONLINE POSITIONING USER SERVICE (OPUS).

THE SECONDARY CONTROL WAS ESTABLISHED BY USING A TRIMBLE R12 GNSS BASE RECEIVER OPERATING IN A REAL TIME KINEMATIC (RTK) MODE AND SET ON THE PRIMARY OPUS CONTROL WHILE TRANSMITTING REAL TIME CORRECTIONS TO A TRIMBLE R12i GNSS RECEIVER ALSO OPERATING IN A REAL TIME KINEMATIC (RTK) MODE. IN AREAS OF MINIMAL TREE CANOPY, THE MONUMENTS WERE TIED DIRECTLY USING A TRIMBLE R12i GNSS ROVER WHILE RECEIVING CORRECTIONS FROM PRIMARY CONTROL POINTS. IN AREAS WHERE THE TREE CANOPY WAS TOO DENSE FOR USING A TRIMBLE R12i GNSS ROVER (RTK), A CLOSED LOOP TRAVERSE WAS RUN OFF OF THE SECONDARY CONTROL USING A TRIMBLE S7 3" TOTAL STATION. EACH CONTROL TRAVERSE WAS BALANCED USING STAR-NET LEAST SQUARES ADJUSTMENT SOFTWARE.

POINT NO.	NORTHING	EASTING	ELEV	DESCRIPTION
51	109220.02	83600.04	992.93	5/8" IR W/ YPC "RENTON PLS2830"
52	110449.01	82878.73	1004.35	1/2" IR W/ RPC "MGS CONTROL"
53	107125.00	82025.40	1403.22	5/8" IR W/ RPC "MGS CONTROL"
54	104556.07	86754.16	1142.29	5/8" IR W/ 2" ALUM. CAP "RESTON 4 2023"

LEGEND:

△ INDICATES MGS CONTROL POINT



CONTROL DIAGRAM

SCALE 1 INCH = 800 FEET

UNITED STATES DEPARTMENT OF THE INTERIOR BUREAU OF LAND MANAGEMENT

BOUNDARY

NO TIMBER MAY BE CUT OR REMOVED WITHOUT AUTHORIZATION

T. R. SEC. LINE IS APPROX. FT.

CORNER IS APPROX. FT.

POSTED BY DATE

BLM OFFICE IS LOCATED AT

UNITED STATES DEPARTMENT OF THE INTERIOR BUREAU OF LAND MANAGEMENT

BEARING TREE

IT IS UNLAWFUL TO DESTROY, DEFACE, CHANGE OR REMOVE ANY CORNER OF THE PUBLIC LAND SURVEYS OR TO CUT DOWN OR DEFACE ANY BEARING TREE PERTAINING TO SUCH SURVEYS.

CORNER IS APPROXIMATELY DISTANCE DIRECTION

T. R. SEC. POSTED BY DATE

LAND SURVEY MONUMENT

PLEASE DO NOT DISTURB

THIS MONUMENT WAS LOCATED AS PART OF AN OFFICIAL LAND SURVEY. IT HELPS DEFINE LAND OWNERSHIP LINES.

FOR FURTHER INFORMATION CONTACT THE BUREAU OF LAND MANAGEMENT

REGISTERED PROFESSIONAL LAND SURVEYOR

2/29/2024

Daniel A. Renton

OREGON JUNE 30, 1997 DANIEL A. RENTON 2830

Expires 12-31-2024

MINISTER AND GLAESER SURVEYING, INC. MAKES NO WARRANTIES AS TO MATTERS OF UNWRITTEN TITLE SUCH AS ADVERSE POSSESSION, ACQUIESCENCE, ESTOPPEL, ETC.

SCALE: 1"=800'

JOB NO. 22-319

DATE: 2/29/2024

CALC BY: DAR

DRAWN BY: RDH

CHECKED BY: DAR

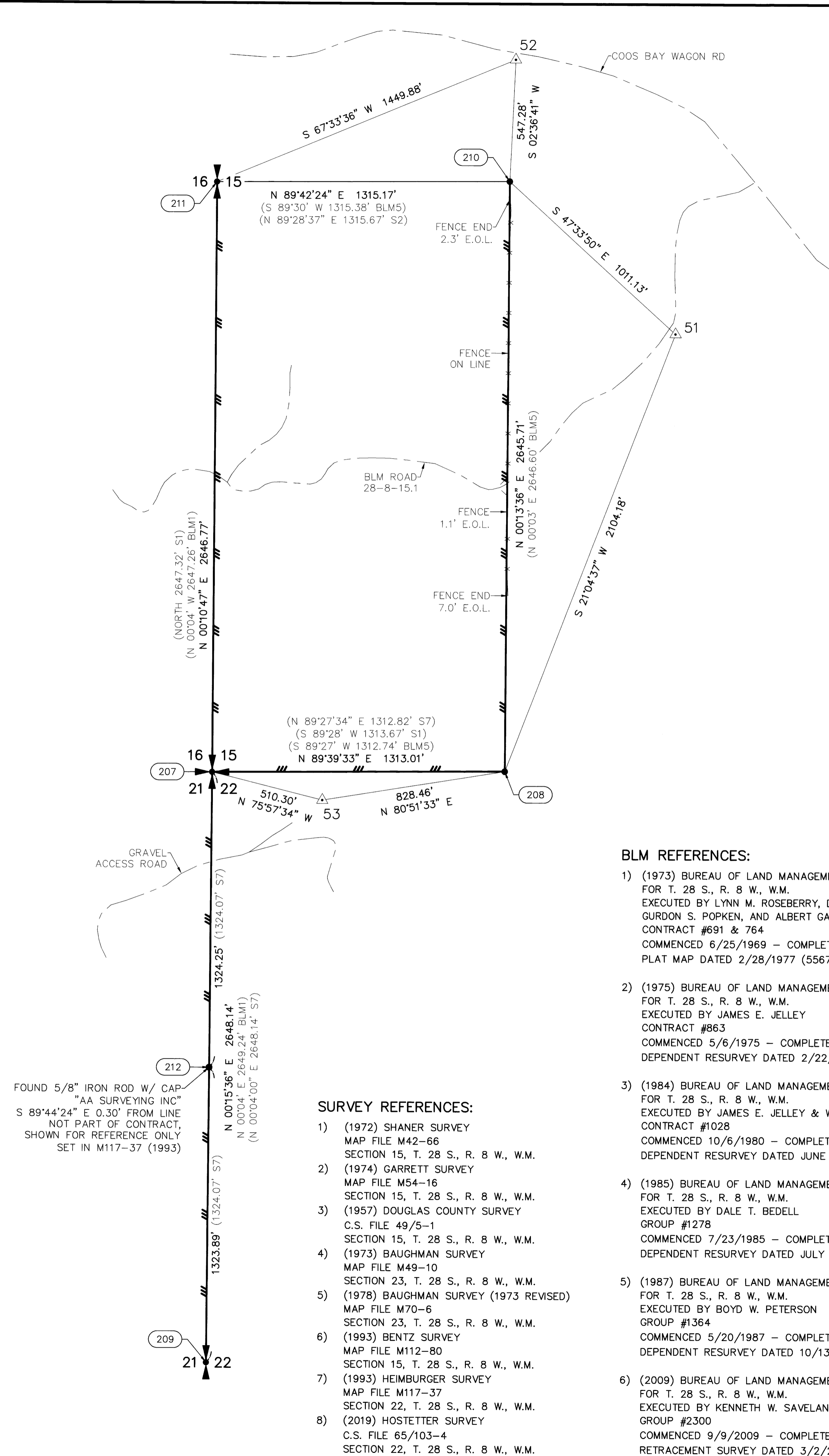
SHEET 1 OF 3

MINISTER-GLAESER SURVEYING INC. 2200 E. EVERGREEN BLVD. VANCOUVER, WA 98661 (360) 694-3313

RECORD OF SURVEY

FILED
 DATE: 3-11-2024 BY: *JD*
 THIS SURVEY CONSISTS OF:
 MAP: M185-4 A-C
 NARRATIVE:
 CORNER RPT:
 DOUGLAS COUNTY
 SURVEYOR

LOCATED IN A PORTION OF
 THE SW 1/4 OF SECTION 15
 THE NE 1/4 OF SECTION 21
 THE SW 1/4 OF SECTION 23
 T. 28 S., R. 8 W., W.M.
 RESTON PIECES-TASK 1
 DOUGLAS COUNTY, OREGON
 CONTRACT NO. 1204T020D0010
 TASK ORDER NO. 140L4322F0063



SURVEY REFERENCES:

- (1972) SHANER SURVEY
 MAP FILE M42-66
 SECTION 15, T. 28 S., R. 8 W., W.M.
- (1974) GARRETT SURVEY
 MAP FILE M54-16
 SECTION 15, T. 28 S., R. 8 W., W.M.
- (1957) DOUGLAS COUNTY SURVEY
 C.S. FILE 49/5-1
 SECTION 15, T. 28 S., R. 8 W., W.M.
- (1973) BAUGHMAN SURVEY
 MAP FILE M49-10
 SECTION 23, T. 28 S., R. 8 W., W.M.
- (1978) BAUGHMAN SURVEY (1973 REVISED)
 MAP FILE M70-6
 SECTION 23, T. 28 S., R. 8 W., W.M.
- (1993) BENTZ SURVEY
 MAP FILE M112-80
 SECTION 15, T. 28 S., R. 8 W., W.M.
- (1993) HEIMBURGER SURVEY
 MAP FILE M117-37
 SECTION 22, T. 28 S., R. 8 W., W.M.
- (2019) HOSTETTER SURVEY
 C.S. FILE 65/103-4
 SECTION 22, T. 28 S., R. 8 W., W.M.

BLM REFERENCES:

- (1973) BUREAU OF LAND MANAGEMENT RESURVEY AND NOTES FOR T. 28 S., R. 8 W., W.M. EXECUTED BY LYNN M. ROSEBERRY, DANIEL L. BERRY, GURDON S. POPKEN, AND ALBERT GARRISON CONTRACT #691 & 764 COMMENCED 6/25/1969 - COMPLETED 4/26/1973 PLAT MAP DATED 2/28/1977 (5567)
- (1975) BUREAU OF LAND MANAGEMENT RESURVEY AND NOTES FOR T. 28 S., R. 8 W., W.M. EXECUTED BY JAMES E. JELLEY CONTRACT #863 COMMENCED 5/6/1975 - COMPLETED 7/23/1975 DEPENDENT RESURVEY DATED 2/22/1978 (5638)
- (1984) BUREAU OF LAND MANAGEMENT RESURVEY AND NOTES FOR T. 28 S., R. 8 W., W.M. EXECUTED BY JAMES E. JELLEY & WAYNE L. ROGERS CONTRACT #1028 COMMENCED 10/6/1980 - COMPLETED 5/10/1984 DEPENDENT RESURVEY DATED JUNE 22, 1984 (5969)
- (1985) BUREAU OF LAND MANAGEMENT RESURVEY AND NOTES FOR T. 28 S., R. 8 W., W.M. EXECUTED BY DALE T. BEDELL GROUP #1278 COMMENCED 7/23/1985 - COMPLETED 10/10/1985 DEPENDENT RESURVEY DATED JULY 22, 1988 (6223)
- (1987) BUREAU OF LAND MANAGEMENT RESURVEY AND NOTES FOR T. 28 S., R. 8 W., W.M. EXECUTED BY BOYD W. PETERSON GROUP #1364 COMMENCED 5/20/1987 - COMPLETED 8/12/1987 DEPENDENT RESURVEY DATED 10/13/1989 (6283)
- (2009) BUREAU OF LAND MANAGEMENT RETRACEMENT SURVEY FOR T. 28 S., R. 8 W., W.M. EXECUTED BY KENNETH W. SAVELAND GROUP #2300 COMMENCED 9/9/2009 - COMPLETED 10/6/2009 RETRACEMENT SURVEY DATED 3/2/2011 (7471)

MONUMENT DETAILS
 NOT TO SCALE

POINT NUMBER: 204

POINT NUMBER: 205

POINT NUMBER: 206

POINT NUMBER: 207

POINT NUMBER: 208

POINT NUMBER: 209

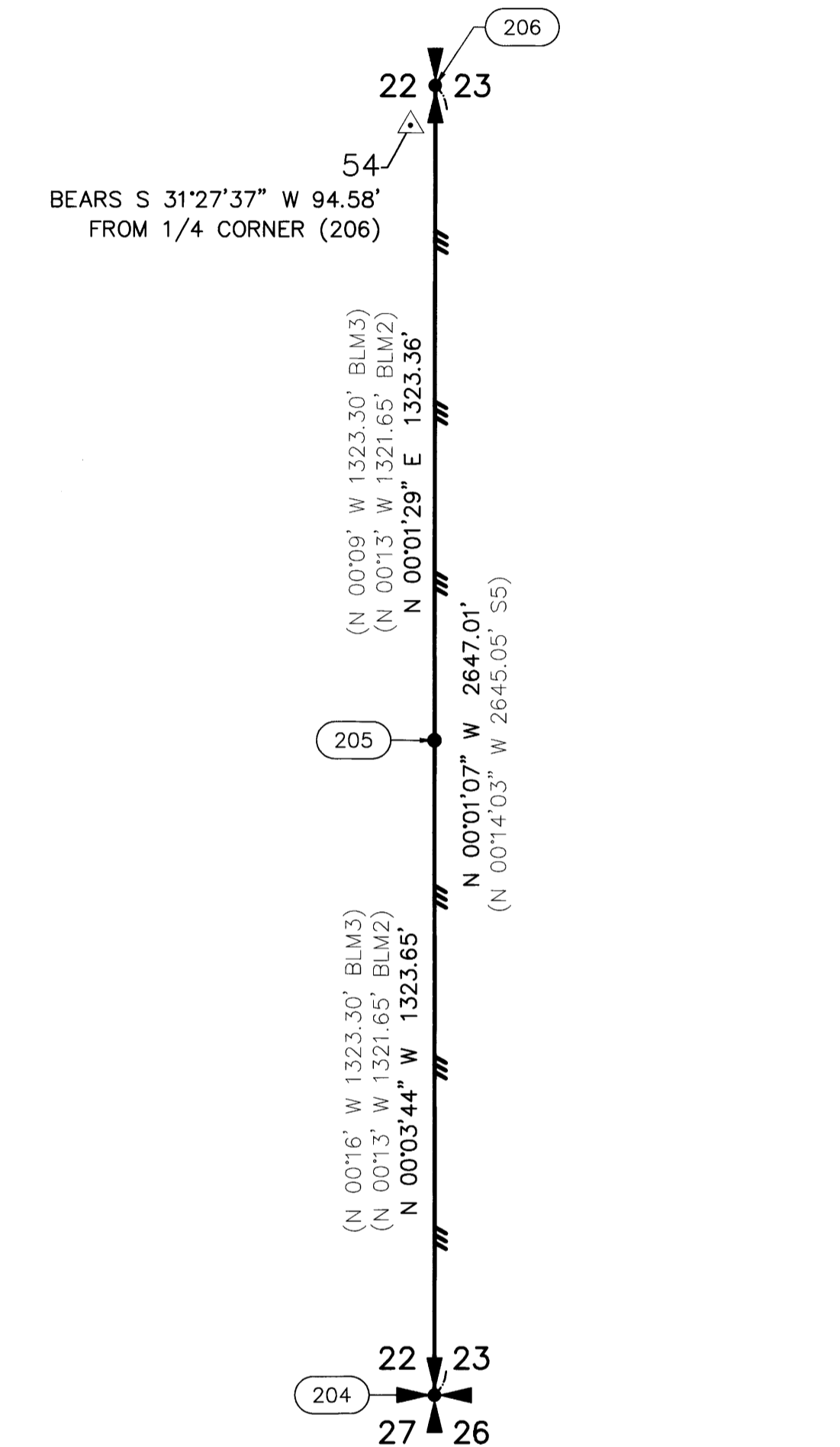
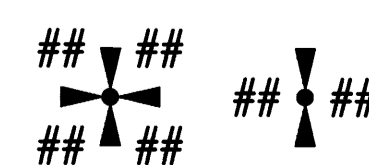
POINT NUMBER: 210

POINT NUMBER: 211

LEGEND:

- INDICATES MONUMENT FOUND AS NOTED IN TABLE, SEE SHEET 3
- △ INDICATES MGS CONTROL POINT SEE CONTROL TABLE, SHEET 1
- (S#) INDICATES RECORD DATA PER SURVEY REFERENCE NUMBER
- (BLM#) INDICATES BUREAU OF LAND MANAGEMENT RECORD DATA
- T. INDICATES TOWNSHIP
- R. INDICATES RANGE
- SEC. INDICATES SECTION
- BT INDICATES BEARING TREE
- CH INDICATES CHAINS (1 CHAIN=66 FEET)
- LKS INDICATES LINKS (1 LINK=0.66 FEET)
- W/ INDICATES WITH
- YPC INDICATES YELLOW PLASTIC CAP
- RPC INDICATES RED PLASTIC CAP
- ALUM. INDICATES ALUMINUM
- CONT. INDICATES CONTINUED
- IR INDICATES IRON ROD
- /— INDICATES BOUNDARY LINE, MARKED AND POSTED
- /— INDICATES SECTION SUBDIVISION
- CRK— INDICATES CENTERLINE OF CREEK
- — — INDICATES CENTERLINE OF ROAD

PLSS CORNERS



MONUMENT TABLE			
POINT NO.	NORTHING	EASTING	DESCRIPTION
204	101989.74	86804.38	2-1/2" BRASS CAP
205	103313.39	86802.95	3-1/4" BRASS CAP
206	104636.75	86803.52	3-1/4" BRASS CAP
207	107248.80	81530.34	2-1/2" BRASS CAP
208	107256.61	82843.33	2-1/2" BRASS CAP
209	104600.69	81518.32	3-1/4" BRASS CAP
210	109902.30	82853.80	3-1/4" BRASS CAP
211	109895.56	81538.64	3-1/4" BRASS CAP
212	105924.56	81524.63	5/8" IRON ROD W/ CAP

REGISTERED
 PROFESSIONAL
 LAND SURVEYOR
Daniel A. Reston
 OREGON
 JUNE 30, 1997
 DANIEL A. RESTON
 2830
 Expires 12-31-2024

SCALE 1 INCH = 300 FEET

MINISTER-GLAESER
 SURVEYING INC.
 2200 E. EVERGREEN BLVD.
 VANCOUVER, WA 98661
 (360) 694-3313

SCALE: 1"=300'
 JOB NO. 22-319
 DATE: 2/29/2024
 CALC BY: DAR
 DRAWN BY: RDH
 CHECKED BY: DAR
 SHEET 2 OF 3

204-FOUND MONUMENT

CORNER R-17, (GCDB 500300)
CORNER OF SECTIONS 22, 23, 26 & 27 T. 28 S., R. 08 W., W.M.

APRIL 12, 1855
GLO SURVEY BY DENNIS HATHORN, DEPUTY SURVEYOR
UNDER CONTRACT NO. 57
(DCSO RECORDS VOL. 14, PAGE 5802)
SET POST COR. SECS. 22, 23, 26, AND 27, FROM WHICH:
A FIR 18" DIA., BEARS N 78° E, 29 LKS. DIST.
A FIR 15" DIA., BEARS S 72° E, 49 LKS. DIST.
A FIR 6" DIA., BEARS N 70° W, 38 LKS. DIST.
A FIR 24" DIA., BEARS S 5° W, 62 LKS. DIST.

JULY - AUGUST 1957
DOUGLAS CO. SURVEYORS OFFICE
JAMES BYRON, DEPUTY - MILO GODFREY; J. FEE, CREW
(C.S. FILE 49/5-28)
FOUND - ORIG. 24" FIR, NOW 4" FIR, SHOWS GOOD BARK SCRIBE
"T28S R8W S22 S 5° W, 40.9'
ALL OTHER ORIGINAL BTS DOWN.
SET BRASS CAP AT COR. MKD:
COUNTY SURVEYORS OFFICE
T28S R8W S22 S23 S26 S27 1957

NEW BTS:
8" R.FIR S 55° W, 37.0'. SCRIBED T28S R8W S27 CS BT
10" R.FIR N 89° W, 46.0'. SCRIBED T28S R8W S22 CS BT
10" CEDAR N 21° E, 17.5'. SCRIBED S23 CS BT
16" MAPLE S 36° E, 58.8'. SCRIBED T28S S26 CS BT

JUNE 1969 - APRIL 1973
BLM RESURVEY BY LYNN ROSEBERRY; DANIEL BERRY; GORDON POPKEN AND ALBERT GARRISON, CADASTRAL SURVEYORS
UNDER GROUP NO. 691 AND 764
(DCSO RECORDS VOL. 36, PAGE 15075)
FOR THE CORNER OF SECTIONS 22, 23, 26, & 27, PERPETUATED BY JAMES W. BYRON, DEPUTY COUNTY SURVEYOR IN 1957, MONUMENTED WITH AN IRON POST, 1-1/2" DIA., FIRMLY SET, PROTRUDING 10" ABOVE GROUND, WITH BRASS CAP MKD: COUNTY SURVEYORS OFFICE T28S R8W S22 23 26 27 1957
FROM WHICH THE REMAINS OF THE ORIGINAL BEARING TREES:
A ROOT HOLE, BEARS N 78° E, 29 LKS. DIST.
A ROOT HOLE, BEARS S 72° E, 49 LKS. DIST.
A ROOT HOLE, BEARS S 05° W, 62 LKS. DIST.
AND BEARING TREES MARKED BY BYRON:
A CEDAR 20" DIA., BEARS N 18° E, 26 LKS. DIST. WITH HEALED BLAZE
A MAPLE 19" DIA., BEARS S 36° E, 90 LKS. DIST. WITH HEALED BLAZE
A FIR 18" DIA., BEARS S 55° W, 55 LKS. DIST. WITH HEALED BLAZE
A FIR 18" DIA., BEARS N 89-1/2° W, 69 LKS. DIST. WITH HEALED BLAZE

JANUARY 1973
GLENN BAUGHMAN
(MAP FILE M70-6)
FOUND BRASS CAP COUNTY SURVEYORS OFFICE 1957

MAY - JULY 1975
BLM RESURVEY BY JAMES E. JELLEY, CADASTRAL SURVEYOR
UNDER GROUP NO. 863
(DCSO RECORDS VOL. 38, PAGES 15567-68)
THE CORNER OF SECTIONS 22, 23, 26 & 27, PERPETUATED AND RECORDED BY JAMES W. BYRON, DEPUTY COUNTY SURVEYOR, IN 1957, MONUMENTED WITH AN IRON POST, 1-1/2" DIA., FIRMLY SET, PROJECTING 10" ABOVE GROUND, WITH BRASS CAP MKD:
COUNTY SURVEYORS OFFICE
T28S R8W S22 S23 S26 S27 1957
FROM WHICH THE ORIGINAL BEARING TREES:
A ROOTHOLE, BEARS N 78° E, 29 LKS. DIST.
A ROOTHOLE, BEARS S 72° E, 49 LKS. DIST.
A ROOTHOLE, BEARS S 5° W, 62 LKS. DIST.
AND BEARING TREES MKD. BY BYRON:
A CEDAR, 22" DIA., BEARS N 18° E, 26 LKS. DIST., WITH HEALED BLAZE
A MAPLE, 19" DIA., BEARS S 36° E, 90 LKS. DIST., WITH HEALED BLAZE
A FIR, 18" DIA., BEARS S 55° W, 55 LKS. DIST., WITH HEALED BLAZE
A FIR, 18" DIA., BEARS N 89-1/2° W, 69 LKS. DIST., WITH HEALED BLAZE

OCTOBER 1980 - MAY 1984
BLM RESURVEY BY JAMES E. JELLEY AND WAYNE L. ROGERS, CADASTRAL SURVEYORS
UNDER GROUP NO. 1028
(DCSO RECORDS VOL. 45, PAGE 17389)
THE CORNER OF SECTIONS 22, 23, 26 & 27, MONUMENTED WITH AN IRON POST, 1-1/4" DIA., FIRMLY SET, PROJECTING 14" ABOVE GROUND, WITH BRASS CAP MKD: COUNTY SURVEYORS OFFICE T28S R8W S22 S23 S26 S27 1957
FROM WHICH THE BEARING TREES MKD. BY JAMES W. BYRON, DEPUTY COUNTY SURVEYOR, IN 1957:
A CEDAR, 25" DIA., BEARS N 18° E, 26 LKS. DIST., WITH HEALED BLAZE
A MAPLE, 23" DIA., BEARS S 36° E, 90 LKS. DIST., WITH HEALED BLAZE
A FIR, 21" DIA., BEARS S 55° W, 55 LKS. DIST., WITH HEALED BLAZE
A FIR, 21" DIA., BEARS N 89-1/2° W, 69 LKS. DIST., WITH HEALED BLAZE

MAY 15, 2023
DANIEL E. SAILY
(MAP FILE M182-25)
SECTION CORNER FOR SECTIONS 22, 23, 26, & 27 (PLSS 500300)
FOUND 1957 DCSO BRASS CAP AND IRON PIPE. THE TOP OF THE CAP IS 1.2' ABOVE GROUND ON STEEP EAST FACING SLOPE. SET A GALVANIZED STEEL POST 1' NORTH FROM WHICH:
A 34" CEDAR BEARS N 18-1/4° E, 17.9' (RECORD N 18° E, 26 LKS.) WITH WELL HEALED FACE AND BLM TAG
A 36" DOUGLAS FIR BEARS S 89-1/2° W, 45.4' (RECORD N 89-1/2°, 69 LKS) WITH WELL HEALED FACE AND BLM TAG
A 33" DOUGLAS FIR BEARS S 54-1/4° W, 36.4' (RECORD S 55° W, 55 LKS.) WITH WELL HEALED FACE AND BLM TAG
NEW 35" DOUGLAS FIR BEARS S 31-1/2° E, 16.9' MKD: T28S R8W S26 BT W/ TAG

JUNE 13, 2023
GARRETT FINCH AND CREW WITH MINISTER AND GLAESER SURVEYING
FOUND 2-1/2" COUNTY SURVEYORS OFFICE BRASS CAP, 1.4' ABOVE GROUND FROM WHICH:
A FIR 36" DIA., BEARS S 31-1/2° E, 17.1' MKD: T28S R8W S26 BT (2023)
A CEDAR 36" DIA., BEARS N 21° E, 17.8' WITH HEALED BLAZE AND BT SIGNS (1957)
A FIR 39" DIA., BEARS N 78° W, 46.0' WITH HEALED BLAZE AND BT SIGNS (1957)
A FIR 34" DIA., BEARS S 70° W, 37.3' WITH HEALED BLAZE AND BT SIGN (1957)
A MAPLE (DEAD) 22" DIA., BEARS S 30° E, 59.8' WITH HEALED BLAZE (1957)
(SET CHAINING NAIL AT SIDE CENTER, BT SIGNS ON FRONT AND BACK, AND PAINTED RED BAND FOR EXISTING BT'S)

205-FOUND MONUMENT

CORNER Q-17, (GCDB 500320)
S 1/16 CORNER OF SECTIONS 22 & 23 T. 28 S., R. 08 W., W.M.

MAY - JULY 1975
BLM RESURVEY BY JAMES E. JELLEY, CADASTRAL SURVEYOR
UNDER GROUP NO. 863
(DCSO RECORDS VOLUME 38, PAGE 15568)
SET AN IRON POST, 28" LONG, 2-1/2" DIA., 24" IN THE GROUND, WITH BRASS CAP MKD: S 1/16 S22 S23 1975
FROM WHICH:
A FIR, 9" DIA., BEARS N 77° E, 20 LKS. DIST., MKD. S 1/16 S23 BT
A FIR, 7" DIA., BEARS N 41-1/2° W, 25-1/2 LKS. DIST. MKD. S 1/16 S22 BT

205 CONT.

OCTOBER 1980 - MAY 1984
BLM RESURVEY BY JAMES E. JELLEY AND WAYNE L. ROGERS, CADASTRAL SURVEYORS
UNDER GROUP NO. 1028
(DCSO RECORDS VOLUME 45, PAGE 17390)
THE S 1/16 SECTION CORNER OF SECTIONS 22 & 23, MONUMENTED WITH AN IRON POST, 2-1/2" DIA., FIRMLY SET, PROJECTING 5" ABOVE GROUND, WITH BRASS CAP MKD: S 1/16 S22 S23 1975
FROM WHICH BEARING TREES MKD. BY JELLEY:
A FIR, 13" DIA., BEARS N 77° E, 20 LKS. DIST., WITH HEALED BLAZE
A FIR, 10" DIA., BEARS N 41-1/2° W, 25-1/2 LKS. DIST., WITH HEALED BLAZE

JULY - OCTOBER 1985
BLM RESURVEY BY DALE T. BEDELL, CADASTRAL SURVEYOR
UNDER GROUP NO. 1278
(DCSO RECORDS VOLUME 48, PAGE 18262)
THE S 1/16 CORNER OF SECTIONS 22 & 23, MONUMENTED WITH AN IRON POST, 2-1/2" DIA., FIRMLY SET, PROJECTING 6" ABOVE GROUND, WITH BRASS CAP MKD: S 1/16 S22 S23 1975
FROM WHICH:
A FIR, 15" DIA., BEARS N 77° E, 20 LKS. DIST., WITH HEALED BLAZE
A FIR, 12" DIA., BEARS N 41-1/2° W, 25-1/2 LKS. DIST., WITH HEALED BLAZE

JUNE 16, 2023
GARRETT FINCH AND CREW WITH MINISTER AND GLAESER SURVEYING
FOUND 3-1/4" BLM BRASS CAP, 0.6' ABOVE GROUND FROM WHICH:
A FIR 29" DIA., BEARS N 77° E, 13.1' WITH HEALED BLAZE AND BT SIGN (1975)
A FIR 30" DIA., BEARS N 41-1/2° W, 17.1' WITH HEALED BLAZE (1975)
(SET CHAINING NAIL AT SIDE CENTER, BT SIGNS ON FRONT AND BACK, AND PAINTED RED BAND FOR EXISTING BT'S)

206-FOUND MONUMENT

CORNER R-17, (GCDB 500340)
1/4 CORNER OF SECTIONS 22 & 23 T. 28 S., R. 08 W., W.M.

APRIL 12, 1855
GLO SURVEY BY DENNIS HATHORN, DEPUTY SURVEYOR
UNDER CONTRACT NO. 57
(DCSO RECORDS VOL. 14, PAGE 5803)
MARKED A FIR 12" DIA. FOR 1/4 SEC. COR., FROM WHICH
A FIR 12" DIA., BEARS N 75° E, 30 LKS. DIST.
A FIR 12" DIA., BEARS N 30° W, 40 LKS. DIST.

MAY - JULY 1975
BLM RESURVEY BY JAMES E. JELLEY, CADASTRAL SURVEYOR
UNDER CONTRACT NO. 863
(DCSO RECORDS VOL. 38, PAGES 15568-69)
POINT FOR THE 1/4 SEC. COR., AT PROPORTIONATE DISTANCE; THERE IS NO REMAINING EVIDENCE OF THE ORIGINAL CORNER.
SET AN IRON POST, 28" LONG, 2-1/2" DIA., 24" IN THE GROUND, WITH THE BRASS CAP MKD:
1/4 S22 S23 T28S R8W 1975
FROM WHICH:
A FIR 6" DIA., BEARS N 50-1/2° E, 12 LKS. DIST. MKD. 1/4 S23 BT
A W.FIR 6" DIA., BEARS N 79° W, 20 LKS. DIST. MKD. 1/4 S22 BT

OCTOBER 1980 - MAY 1984
BLM RESURVEY BY JAMES E. JELLEY AND WAYNE L. ROGERS, CADASTRAL SURVEYORS
UNDER GROUP NO. 1028
(DCSO RECORDS VOL. 45, PAGE 17390)
THE 1/4 CORNER OF SECTIONS 22 & 23, MONUMENTED WITH AN IRON POST, 2-1/2" DIA., FIRMLY SET, PROJECTING 4" ABOVE GROUND, WITH BRASS CAP MKD: T28S R8W 1/4 S22 S23 1975
FROM WHICH BEARING TREES MKD. BY JELLEY:
A FIR, 8" DIA., BEARS N 50-1/2° E, 12 LKS. DIST., WITH HEALED BLAZE
A GRAND FIR, 8" DIA., BEARS N 79° W, 20 LKS. DIST., WITH HEALED BLAZE

JULY - OCTOBER 1985
BLM RESURVEY BY DALE T. BEDELL, CADASTRAL SURVEYOR
UNDER GROUP NO. 1278
(DCSO RECORDS VOL. 48, PAGE 18262)
THE 1/4 SECTION CORNER OF SECTION 22 & 23, MONUMENTED WITH AN IRON POST, 2-1/2" DIA., FIRMLY SET, PROTRUDING 4" ABOVE GROUND, WITH BRASS CAP MKD: T28S R8W 1/4 S22 S23 1975
FROM WHICH THE BEARING TREES MKD. BY JELLEY:
A FIR, 10" DIA., BEARS N 50-1/2° E, 12 LKS. DIST., WITH HEALED BLAZE
A FIR, 9" DIA., BEARS N 79° W, 20 LKS. DIST., WITH HEALED BLAZE

JULY 2001
MARK SMALLLEY - FOR: ROSEBURG RESOURCES
(MAP FILE M138-50)
FOUND:
1975 BLM BRASS CAP ON IRON PIPE
11" (6") FIR N 50-1/2° E, 7.9' HEALED
11" (6") FIR N 79° W, 13.2' HEALED
SCRIBED:
11" FIR N 53° W, 24.5' "1/4 S BT"
11" FIR S 87° E, 18.1' "1/4 S BT"

JUNE 13, 2023
GARRETT FINCH AND CREW WITH MINISTER AND GLAESER SURVEYING
FOUND 3-1/4" BLM BRASS CAP, 0.6' ABOVE GROUND FROM WHICH:
A FIR 14" DIA., BEARS N 79° W, 13.1' WITH 2 HEALED BLAZES AND BT SIGN (1975)
A FIR 16" DIA., BEARS N 53° W, 24.5' WITH HEALED BLAZE AND BT SIGN (2001)
A FIR 16" DIA., BEARS N 50-1/2° E, 8.0' WITH HEALED BLAZE AND BT SIGN (1975)
A FIR 14" DIA., BEARS S 87° E, 18.1' WITH HEALED BLAZE AND BT SIGN (2001)
(SET CHAINING NAIL AT SIDE CENTER, BT SIGNS ON FRONT AND BACK, AND PAINTED RED BAND FOR EXISTING BT'S)

207-FOUND MONUMENT

CORNER N-13, (GCDB 400400)
CORNER OF SECTIONS 15, 16, 21 & 22 T. 28 S., R. 08 W., W.M.

APRIL 12, 1855
GLO SURVEY BY DENNIS HATHORN, DEPUTY SURVEYOR
UNDER CONTRACT NO. 57
(DCSO RECORDS VOL. 14, PAGE 5809)
SET POST, COR. SEC. 15, 16, 21 AND 22 FROM WHICH:
A FIR 9" DIA., BEARS S 45° W, 54 LKS. DIST.
A FIR 12" DIA., BEARS N 70° W, 37 LKS. DIST.
A FIR 10" DIA., BEARS N 20° E, 89 LKS. DIST. (ERROR ON DCSO COR. RENEWAL)
A FIR 30" DIA., BEARS S 62° E, 50 LKS. DIST.

1875
GLO SURVEY BY WINFIELD S. CHAPMAN
FOUND POST, WITNESS TREES STANDING

207 CONT.

JULY - AUGUST 1957
DOUGLAS CO. SURVEYORS OFFICE
JAMES BYRON, DEPUTY - MILO GODFREY; J. FEE, CREW
(C.S. FILE 49/5-1)
FOUND:

ORIG. SE. BT, NOW 36" SNAG. THIS TREE WAS BARK SCRIBED. BARK WITH SCRIBING "R8" LAYING ON GROUND AT BASE OF TREE.
FOUND EVIDENCE OF FIR TREE AT RECORD DIST. & BRG. FOR SW. ORIGINAL BT.
FOUND NO EVIDENCE OF NE. ORIG. BT., NOR SW. ORIG. BT.
(WHICH WOULD FALL IN CAT ROAD)
SET BRASS CAP AT COR. MKD:
COUNTRY SURVEYORS OFFICE
T28S R8W S16 S15 S21 S22 1957
FROM WHICH:
14" W.FIR BEARS N 82° W, 46.7'. SCRIBED T28S R8W S16 CS BT
30" R.FIR BEARS S 47° W, 39.0'. SCRIBED S21 T28S R8W CS BT
15" W.FIR BEARS N 86° W, 42.0'. SCRIBED S16 T28S R8W CS BT, DAMAGED SEVERELY
10" R.FIR BEARS N 73° E, 60.0'. SCRIBED S15 T28S R8W CS BT
26" HEMLOCK BEARS S 2-1/2° E, 39.5'. SCRIBED S22 T28S R8W CS BT

JUNE 1969 - APRIL 1973
BLM RESURVEY BY LYNN ROSEBERRY; DANIEL BERRY; GORDON POPKEN AND ALBERT GARRISON, CADASTRAL SURVEYORS
UNDER GROUP NO. 691 AND 764
(DCSO RECORDS VOL. 36 PAGES 15077-78)
THE SEC. COR., PERPETUATED AND RECORDED BY BYRON IN 1957, MONUMENTED WITH AN IRON POST 1-1/2" DIA., FIRMLY SET, PROTRUDING 8" ABOVE GROUND WITH BRASS CAP MKD. IN 1957 FROM WHICH THE REMAINS OF THE ORIGINAL BEARING TREE:
A ROOT HOLE BEARS S 62° E, 50 LKS. DIST. WITH A DOWN AND DECAYED FIR ALONGSIDE, NO MARKS VISIBLE
AND BEARING TREES MKD. BY BYRON:
A FIR 17" DIA., BEARS N 73° E, 87-1/2 LKS. DIST., WITH HEALED DOUBLE BLAZE
A HEMLOCK 26" DIA., BEARS S 2-1/2° E, 60 LKS. DIST. WITH HEALED DOUBLE BLAZE
A FIR 30" DIA., BEARS S 45° W, 62 LKS. DIST. WITH HEALED BLAZE
A SAWED WHITE FIR STUMP 15" DIA., BEARS N 86° W, 64 LKS. DIST., NO MARKS VISIBLE
A FIR SNAG 14" DIA., BEARS N 83-1/2° W, 71 LKS. DIST., WITH HEALED DOUBLE BLAZE
AND A BEARING TREE MKD. BY ROSEBERRY IN 1969:
A FIR 20" DIA., BEARS N 57° W, 141 LKS. DIST., WITH SCRIBE MARKS:
T28S R8W S16 BT VISIBLE ON PARTIALLY HEALED BLAZE

AUGUST 1972
BRUCE SHANER WITH SHANER ENGINEERING
(MAP FILE M42-66)
FOUND BRASS CAP MKD. COUNTY SURVEYORS OFFICE T28S R8W 16, 15, 21, 22 1957
FROM WHICH:
A W.FIR 14" DIA. SNAG, BEARS N 82° W, 46.7' (REC. N 86° W, 42.0')
A W.FIR 22" DIA., BEARS N 56° W, 94.4' W/ SCRIBING
A D.FIR 20" DIA., BEARS N 73° E, 58.5' (REC. 60.0')
A HEMLOCK 26" DIA., BEARS S 2-1/2° E, 39.5'
A D.FIR 30" DIA., BEARS S 47° W, 40.5' (REC. 39.0')

MAY - JULY 1975
COR. FD. AND USED IN BLM RESURVEY BY JAMES E. JELLEY, CADASTRAL SURVEYOR
UNDER GROUP NO. 863
(DCSO RECORDS VOL. 38 PAGES 15563-84)
MAY - AUGUST 1987
BLM RESURVEY BY BOYD W. PETERSON
UNDER GROUP NO. 1364
(DCSO RECORDS VOL. 48 PAGE 18404)
THE SEC. COR., MONUMENTED WITH AN IRON POST 1-1/4" DIA., FIRMLY SET, PROJECTING 6" ABOVE GROUND WITH BRASS CAP MKD. IN 1957 FROM WHICH THE REMAINS OF BEARING TREES MKD. BY BYRON IN 1957:
A FIR 25" DIA., BEARS N 73° E, 87-1/2 LKS. DIST., WITH HEALED DOUBLE BLAZE
A HEMLOCK SNAG 26" DIA., BEARS S 3-3/4° E, 60 LKS. DIST., WITH FRAGMENTARY SCRIBING VISIBLE ON PARTIALLY HEALED BLAZE
A SAWED FIR STUMP 30" DIA., BEARS S 45° W, 62 LKS. DIST., NO MARKS VISIBLE AND NEW BEARING TREES:
A FIR 6" DIA., BEARS S 52° E, 15 LKS. DIST., MKD. T28S R8W S22 BT
A FIR 4" DIA., BEARS S 57° W, 20-1/2 LKS. DIST., MKD. X BT
A FIR 5" DIA., BEARS N 69-1/2° W, 30 LKS. DIST., MKD. T28S R8W S16 BT

JULY 1993
MARK HEIMBURGER WITH AA SURVEYING SERVICE, INC.
(MAP FILE M117-37)
FOUND DCSO BRASS CAP 1957

SEPTEMBER - OCTOBER 2009
BLM RETRACEMENT BY KENNETH W. SAVELAND, CADASTRAL SURVEYOR
UNDER GROUP NO. 2300
(DCSO RECORDS VOL. 56 PAGES 22272-3)
THE COR. OF SECS. 15, 16, 21, AND 22, ESTABLISHED BY HATHORN IN 1856, PERPETUATED FROM ORIGINAL EVIDENCE NO LONGER EXISTENCE BY JAMES W. BYRON, DEPUTY COUNTY SURVEYOR IN 1957, FILED IN DOUGLAS COUNTY SURVEYOR'S OFFICE, C.S. FILE NO. 49/5, MONUMENTED WITH AN IRON POST, 1-1/4" DIA., FIRMLY SET, PROJECTING 7" ABOVE GROUND, WITH BRASS CAP (PROPERLY) MKD.
FROM WHICH THE REMAINS OF BTS MKD. BY BYRON, REPORTED BY PETERSON:
A FIR 32" DIA., BEARS N 73° E, 57.8', WITH A HEALED BLAZE
A ROOTHOLE BEARS S 3-3/4° E, 39.6', DOWNHILL OF WHICH IS A HEMLOCK SNAG, SIZE INDETERMINATE, WITH NO MARKS VISIBLE ON A HOLLOWED BLAZE
A SAWED FIR STUMP, 28" DIA., BEARS S 45° W, 40.9', WITH NO MARKS VISIBLE AND A METAL COVER
AND REMAINING BTS MKD. BY PETERSON:
A FIR, 10" DIA., BEARS S 57° W, 13.5', WITH A HEALED DOUBLE BLAZE
A FIR, 13" DIA., BEARS N 69-1/2° W, 19.8', WITH A HEALED BLAZE
AND A NEW BEARING TREE
A FIR, 10 INS. DIAM., BEARS S 7-1/2° E, 19.7', MKD. T28S R8W S22 BT

JULY 1993
MARK HEIMBURGER WITH AA SURVEYING SERVICE, INC.
(MAP FILE M117-37)
FOUND DCSO BRASS CAP 1957

JUNE 16, 2023
GARRETT FINCH AND CREW WITH MINISTER AND GLAESER SURVEYING
FOUND 2-1/2" COUNTY SURVEYORS OFFICE BRASS CAP, 0.5' ABOVE GROUND FROM WHICH:
A FIR 17" DIA., BEARS N 71° W, 19.7' WITH HEALED BLAZE AND BT SIGN (1987)
A FIR 14" DIA., BEARS S 57° W, 13.7' WITH 2 HEALED BLAZES AND BT SIGN (1987)
A STUMP 27" DIA., BEARS S 45° W, 40.6' WITH TIN TOP AND BT SIGN (1957)
A FIR 13" DIA., BEARS S 7-1/2° E, 19.7' WITH HEALED BLAZE AND BT SIGN (2009)
A FIR 36" DIA., BEARS N 73° E, 56.7' WITH HEALED BLAZE AND BT SIGN (1957)
A ROTTED STUMP 18" DIA., BEARS S 2-1/2° E, 39.3' (1957)
(SET CHAINING NAIL AT SIDE CENTER, BT SIGNS ON FRONT AND BACK, AND PAINTED RED BAND FOR EXISTING BT'S)

208-FOUND MONUMENT

CORNER N-14, (GCDB 420400)
W 1/16 CORNER OF SECTIONS 15 & 22 T. 28 S., R. 08 W., W.M.

AUGUST 1972
BRUCE SHANER WITH SHANER ENGINEERING
(MAP FILE M42-66)
SET BRASS CAP MKD: T28S R8W W 1/16 S15 S22 1972
FROM WHICH:
A W.FIR 18" DIA., BEARS N 66° E, 15.8' MKD: W 1/16 S15 BT
A D.FIR 14" DIA., BEARS S 67° W, 84.9' MKD: W 1/16 S22 BT

ESTABLISHED THE FOLLOWING:
A FIR 21" DIA., BEARS S 54° W, 12.5' MKD: CW 1/16 S15 BT
(SET CHAINING NAIL AT SIDE CENTER, BT SIGNS ON FRONT AND BACK AND PAINTED RED BAND FOR NEW BT)

ESTABLISHED THE FOLLOWING:
A FIR 21" DIA., BEARS S 54° W, 12.5' MKD: CW 1/16 S15 BT
(SET CHAINING NAIL AT SIDE CENTER, BT SIGNS ON FRONT AND BACK AND PAINTED RED BAND FOR EXISTING BT'S)

208 CONT.

MAY 1987 - AUGUST 1987
BLM DEPENDENT RESURVEY BY BOYD W. PETERSON
UNDER CONTRACT NO. 1364
(DCSO RECORDS VOLUME 48, PAGE 18403)
THE W 1/16 CORNER OF SECTIONS 15 & 22, MONUMENTED WITH AN IRON POST, 1-1/4" DIA., FIRMLY SET, PROJECTING 12" ABOVE GROUND, WITH BRASS CAP MKD: T28S R8W W 1/16 S15 S22 1972
FROM WHICH BEARING TREES MKD BY SHANER:
A W.FIR 25" DIA., BEARS N 67° E, 24 LKS. DIST., WITH HEALED BLAZE
A FIR 18" DIA., BEARS S 67-1/4° W, 128 LKS. DIST., WITH HEALED BLAZE

JULY 1993
MARK HEIMBURGER WITH AA SURVEYING SERVICE, INC.
(MAP FILE M117-37)
FOUND BRASS CAP 1972 PER M42-66

JUNE 16, 2023
GARRETT FINCH AND CREW WITH MINISTER AND GLAESER SURVEYING
FOUND 2-1/2" BRASS CAP, 1' ABOVE GROUND FROM WHICH:
A ROTTED STUMP 12" DIA., BEARS N 67° E, 14.5' (1972)
(SET CHAINING NAIL AT SIDE CENTER, BT SIGNS ON FRONT AND BACK, AND PAINTED RED BAND FOR EXISTING BT'S)

ESTABLISHED THE FOLLOWING:
A FIR 18" DIA., BEARS N 58° E, 9.1' MKD: W 1/16 S15 BT
A MADRONE 6" DIA., BEARS S 10° W, 19.2' MKD: W 1/16 S22 BT
(SET CHAINING NAIL AT SIDE CENTER, BT SIGNS ON FRONT AND BACK AND PAINTED RED BAND FOR NEW BT)

JUNE 1969 - APRIL 1973
BLM RESURVEY BY LYNN ROSEBERRY; DANIEL BERRY; GORDON POPKEN AND ALBERT GARRISON, CADASTRAL SURVEYORS
UNDER GROUP NO. 691 AND 764
(DCSO RECORDS VOL. 36, PAGE 15077)
POINT FOR THE 1/4 SEC. COR., AT PROPORTIONATE DISTANCE; THERE IS NO REMAINING EVIDENCE OF THE ORIGINAL CORNER.
SET AN IRON POST, 28" LONG, 2-1/2" DIA., 24" IN THE GROUND, WITH BRASS CAP MKD: T28S R8W 1/4 S21 S22 1973
FROM WHICH:
A FIR 15" DIA., BEARS N 66° E, 38 LKS. DIST. MKD. 1/4 S22 BT
A FIR 10" DIA., BEARS N 49° W, 70 LKS. DIST. MKD. 1/4 S21 BT

JULY - OCTOBER 1985
BLM RESURVEY BY DALE T. BEDELL, CADASTRAL SURVEYOR
UNDER GROUP NO. 1278
(DCSO RECORDS VOL. 48, PAGE 18263)
THE 1/4 SECTION CORNER OF SECTIONS 21 & 22, MONUMENTED WITH AN IRON POST, 2-1/2" DIA., FIRMLY SET, PROJECTING 6" ABOVE GROUND, WITH BRASS CAP MKD: T28S R8W 1/4 S21 S22 1973
FROM WHICH THE BEARING TREES MKD. BY ROSEBERRY, BERRY, POPKEN AND GARRISON:
A FIR, 20" DIA., BEARS N 66° E, 38 LKS. DIST., WITH HEALED BLAZE
A FIR, 12" DIA., BEARS N 49° W, 70 LKS. DIST., WITH HEALED BLAZE

JUNE 1993
MARK HEIMBURGER WITH AA SURVEYING SERVICE, INC.
(MAP FILE M117-37)
FOUND BLM BRASS CAP 1973

JANUARY 2019
TONY HOSTETTER- FOR: WEYERHAEUSER CO.
(C.S. FILE 65/103-4)
FOUND-1973 BLM BRASS CAP AS DESCRIBED IN (DCSO VOL. 36, PAGE 15077)
FROM WHICH:
27" FIR, FACE EVIDENT, BLM TAG, BEARS; N 66° E, 25.1'. TO CENTER
18" FIR, FACE EVIDENT, BLM TAG, BEARS; N 49° W, 46.2'. TO CENTER
NEW BTS:
9" FIR, MARKED "X", BT TAG, S 4° E, 5.5'. TO SPIKE
13" FIR, MKD "X", BT TAG, S 51° E, 10.9'. TO SPIKE (TAG READS N 51° E)
6" CEDAR, MKD "X", BT TAG, N 48° E, 5.9'. TO SPIKE

JUNE 15, 2023
GARRETT FINCH AND CREW WITH MINISTER AND GLAESER SURVEYING
FOUND 3-1/4" BLM BRASS CAP, 0.4' ABOVE GROUND FROM WHICH:
A FIR 10" DIA., BEARS S 04° E, 6.2' (SIDE) MKD. "X" AT BREAST HEIGHT (2019)
[RECORD 5.5', MONUMENT TO SPIKE AT FACE OF TREE]
A FIR 14" DIA., BEARS S 51° W, 11.8' (SIDE) MKD. "X" AT BREAST HEIGHT (2019)
[RECORD S 51° E (TAG N 51° E), 10.9', MONUMENT TO SPIKE AT FACE OF TREE]
A FIR 28" DIA., BEARS N 66° E, 25.5' MKD. "X" AT BREAST HEIGHT (1973)
A FIR 18" DIA., BEARS N 49° W, 45.6' WITH HEALED BLAZE AND BT SIGN (1973)
(SET CHAINING NAIL AT SIDE CENTER, BT SIGNS ON FRONT AND BACK, AND PAINTED RED BAND FOR EXISTING BT'S)

210-FOUND MONUMENT
CORNER L-14, (GCDB 420440)
C-W 1/16 CORNER OF SECTION 15 T. 28 S., R. 08 W., W.M.

MAY - AUGUST 1987
BLM RESURVEY BY BOYD W. PETERSON
UNDER GROUP NO. 1364
(DCSO RECORDS VOLUME 48, PAGE 18413)
POINT FOR CENTER W 1/16 SECTION CORNER OF SECTION 15, SET A STAINLESS STEEL POST, 28" LONG, 2-1/2" DIA., 26" IN THE GROUND, WITH BRASS CAP MKD: C W 1/16 C S15 1987
FROM WHICH:
A FIR 5" DIA., BEARS N 79-1/2° E, 48 LKS. DIST., MKD: X BT
A FIR 10" DIA., BEARS N 44-1/4° W, 22 LKS. DIST., MKD: CW 1/16 S15 BT
DEPOSIT WHITE "DEEP-1" MAGNETIC MARKER AT BASE OF STAINLESS STEEL POST

JUNE 14, 2023
GARRETT FINCH AND CREW WITH MINISTER AND GLAESER SURVEYING
FOUND 3-1/4" BLM BRASS CAP, 0.4' ABOVE GROUND FROM WHICH:
A FIR 18" DIA., BEARS N 44-1/2° W, 15.0' WITH HEALED BLAZE (1987)
A ROTTED STUMP 16" DIA., BEARS N 79-1/2° E, 31.7' (1987)
(SET CHAINING NAIL AT SIDE CENTER, BT SIGNS ON FRONT AND BACK, AND PAINTED RED BAND FOR EXISTING BT'S)

ESTABLISHED THE FOLLOWING:
A FIR 21" DIA., BEARS S 54° W, 12.5' MKD: CW 1/16 S15 BT
(SET CHAINING NAIL AT SIDE CENTER, BT SIGNS ON FRONT AND BACK AND PAINTED RED BAND FOR NEW BT)