

112-FOUND MONUMENT

CORNER J-11, (GCDB 340500) 1/4 CORNER OF SECTIONS 9 & 16 T. 28 S., R. 7 W., W.M.

MAY 30, 1854 (ORIGINAL) NATHANIEL FORD UNDER CONTRACT NO. 44 (DCSO RECORD VOLUME 14, PAGE 5772) SET 1/4 SECTION POST AT AVERAGE DISTANCE, FROM WHICH: A W.OAK 15" DIA., BEARS N 80° E, 125 LKS. A W.OAK 30" DIA., BEARS S 10° E, 37 LKS.

JULY - AUGUST 1975 BLM RESURVEY BY JAMES E. JELLEY UNDER GROUP NO. 878 (DCSO RECORDS VOLUME 37, PAGES 15419-20) POINT FOR THE 1/4 SECTION CORNER OF SECTION 9 & 16, AT PROPORTIONATE DISTANCE; THERE IS NO REMAINING EVIDENCE OF THE ORIGINAL CORNER SET AN IRON POST, 28" LONG, 2-1/2" DIA., 24" IN THE GROUND, WITH BRASS CAP MKD: 1/4 S9 S16 T28S R7W 1975 FROM WHICH: A FIR 17" DIA., BEARS N 77-1/2° E, 38 LKS. MKD: 1/4 S9 BT A FIR 6" DIA., BEARS S 36° E, 51 LKS. MKD: 1/4 S16 BT

APRIL 1983 - JANUARY 1984 BLM RESURVEY BY BISHOP & ROGERS UNDER GROUP NO. 1124 (DCSO RECORDS VOLUME 46, PAGE 17759) POINT FOR THE 1/4 CORNER OF SECTIONS 9 & 16, MONUMENTED WITH AN IRON POST, 2-1/2" DIA., FIRMLY SET, PROJECTING 6" ABOVE GROUND, WITH BRASS CAP MKD: T28S R7W 1/4 S9 S16 1975 FROM WHICH BEARING TREES MKD BY JELLEY: A FIR 18" DIA., BEARS N 60-3/4° E, 38 LKS. DIST. WITH HEALED BLAZE (RECORD N 77-1/2° E) A FIR 8" DIA., BEARS S 36° E, 51 LKS. DIST. WITH HEALED BLAZE

JUNE 1984 GLENN BAUGHMAN, L.S. #536 FOR GLIDE LUMBER PRODUCTS (C.S. FILE 58/144; RM 3-62) FOUND: 2-1/2" IRON PIPE WITH BRASS CAP FROM WHICH: A 20" D.FIR BEARS N 64° E, 24.4' (RECORD N 77-1/2° E, 25.1') AN 8" D.FIR BEARS S 36° E, 33.4' SET IRON ROD BEARS N 73°46'16" E, 4.52' FROM FOUND BRASS CAP A 20" D.FIR BEARS N 58° E, 20.1' WITH HEALED BLAZE (1975) AN 8" D.FIR BEARS S 30-1/2° E, 32.1' WITH HEALED BLAZE (SAME BT'S WERE USED FOR BOTH THE IRON PIPE AND IRON ROD)

NOVEMBER 1988 HOWARD W. JOHNSTONE, L.S. #498 (MAP FILE M101-45) FOUND 5/8" IRON ROD WITH PLASTIC CAP MKD: BAUGHMAN TECH. SERV. FROM WHICH: A FIR 20" DIA., BEARS N 58° E, 20.1' HEALED A FIR 8" DIA., BEARS S 30-1/2° E, 32.1' HEALED THE 1975 CAD. BCIP BEARS S 73°38'15" W, 4.48'

MARCH 9, 2023 GARRETT FINCH AND CREW WITH MINISTER AND GLAESER SURVEYING FOUND 3-1/4" BRASS CAP, 0.7" ABOVE GROUND FROM WHICH: A 5/8" IRON ROD BEARS N 74°37'25" E, 4.48' (SURVEY COORDINATES) A FIR 24" DIA., BEARS N 60° E, 24.5' WITH HEALED BLAZE AND BT SIGN (1975) A STUMP 12" DIA. (7" HIGH), BEARS S 40° E, 33.6' WITH HEALED BLAZE (1975) (SET CHAINING NAIL AT SIDE CENTER, BT SIGNS ON FRONT AND REAR, AND PAINTED RED BAND FOR EXISTING BT'S)

ESTABLISHED THE FOLLOWING: A FIR 10" DIA., BEARS S 52° E, 21.7' MKD: 1/4 S16 BT (SET CHAINING NAIL AT SIDE CENTER, NAIL AND WASHER STAMPED "PLS 2830" AT BASE OF BLAZE, BT SIGNS ON FRONT AND BACK AND PAINTED RED BAND FOR NEW BT)

113-FOUND MONUMENT

CORNER H-11, (GCDB 340520) CENTER S 1/16 CORNER OF SECTIONS 9 T. 28 S., R. 7 W., W.M.

APRIL 1983 - JANUARY 1984 BLM RESURVEY BY BISHOP & ROGERS UNDER GROUP NO. 1124 (DCSO RECORDS VOLUME 46, PAGE 17756) POINT FOR THE CENTER S 1/16 SECTION CORNER OF SECTION 9 SET AN ALUMINUM POST, 28" LONG, 2-1/2" DIA., 24" IN THE GROUND, WITH ALUMINUM CAP MKD: S 1/16 C-C S9 1983 FROM WHICH: A W.FIR 8" DIA., BEARS N 10-3/4° E, 17 LKS. DIST. MKD: CS 1/16 S9 BT A FIR 12" DIA., BEARS S 76-1/2° W, 14 LKS. DIST. MKD: CS 1/16 S9 BT

DECEMBER 1996 VIRGIL L. BROADWATER (MAP FILE M126-18) FOUND ALUMINUM CAP MKD: T28S R7W WM C-C S 1/16 S9 1983

MARCH 8, 2023 GARRETT FINCH AND CREW WITH MINISTER AND GLAESER SURVEYING FOUND 3-1/4" ALUMINUM CAP, 0.5" ABOVE GROUND FROM WHICH: A FIR 16" DIA., BEARS N 12° E, 11.6' WITH HEALED DOUBLE BLAZE (1983) A FIR 14" DIA. (DEAD), BEARS S 76° W, 8.4' WITH HEALED DOUBLE BLAZE (1983) (SET CHAINING NAIL AT SIDE CENTER, BT SIGNS ON FRONT AND REAR, AND PAINTED RED BAND FOR EXISTING BT'S)

ESTABLISHED THE FOLLOWING: A FIR 16" DIA., BEARS S 54° W, 32.6' MKD: CS 1/16 S9 BT (SET CHAINING NAIL AT SIDE CENTER, NAIL AND WASHER STAMPED "PLS 2830" AT BASE OF BLAZE, BT SIGNS ON FRONT AND BACK AND PAINTED RED BAND FOR NEW BT)

114-FOUND MONUMENT

CORNER F-12, (GCDB 360560) NE 1/16 CORNER OF SECTION 9 T. 28 S., R. 7 W., W.M.

APRIL 1983 - JANUARY 1984 BLM SUBDIVISION OF SECTION BY BISHOP & ROGERS UNDER GROUP NO. 1124 (DCSO RECORDS VOLUME 46, PAGE 17759) POINT FOR THE NE 1/16 SECTION CORNER OF SECTION 9, SET AN IRON POST 28" LONG, 2-1/2" DIA., 24" IN THE GROUND, WITH BRASS CAP MKD: NE 1/16 S9 1983 FROM WHICH: A FIR 7" DIA., BEARS S 68-1/4° E, 21-1/2 LKS. DIST. MKD: NE 1/16 S9 BT A FIR 10" DIA., BEARS N 18-1/4° W, 16-1/2 LKS. DIST. MKD: NE 1/16 S9 BT FROM THIS POINT A FENCE CORNER BEARS S 45° W, 1.55 CHAINS DIST., WITH FENCING EXTENDING N 02° W AND N 84° W

FEBRUARY 13, 2018 GREGORY D. LANG (PARTITION PLAT 2018-0004) FOUND BRASS CAP AT THE NE 1/16TH CORNER SECTION 9

114 CONT.

MARCH 7, 2023 GARRETT FINCH AND CREW WITH MINISTER AND GLAESER SURVEYING FOUND 3" BRASS CAP, 0.6" ABOVE GROUND FROM WHICH: A STUMP 24" DIA. (2" HIGH), BEARS N 14° W, 10.4' (1983) A FIR 16" DIA., BEARS S 68° E, 13.9' WITH HEALED DOUBLE BLAZE (1983) (SET CHAINING NAIL AT SIDE CENTER, BT SIGNS ON FRONT AND REAR, AND PAINTED RED BAND FOR EXISTING BT'S)

ESTABLISHED THE FOLLOWING: A FIR 24" DIA., BEARS S 70° W, 17.3' MKD: NE 1/16 S9 BT (SET CHAINING NAIL AT SIDE CENTER, NAIL AND WASHER STAMPED "PLS 2830" AT BASE OF BLAZE, BT SIGNS ON FRONT AND BACK AND PAINTED RED BAND FOR NEW BT)

115-FOUND MONUMENT

CORNER F-11, (GCDB 340560) CENTER N 1/16 CORNER OF SECTION 9 T. 28 S., R. 7 W., W.M.

APRIL 1983 - JANUARY 1984 BLM SUBDIVISION OF SECTION BY BISHOP & ROGERS UNDER GROUP NO. 1124 (DCSO RECORDS VOLUME 46, PAGE 17757) POINT FOR THE CENTER N 1/16 SECTION CORNER OF SECTION 9, SET AN IRON POST, 28" LONG, 2-1/2" DIA., 24" IN THE GROUND, WITH BRASS CAP MKD: N 1/16 C-C S9 1983 FROM WHICH: A FIR 15" DIA., BEARS N 56-1/4° E, 77 LKS. DIST. MKD: CN 1/16 S9 BT A W.OAK 8" DIA., BEARS N 83-1/2° W, 189 LKS. DIST. MKD: CN 1/16 S9 BT FROM THIS POINT A FENCE BEARS S 20-1/2° E, 156 LKS. WITH FENCES EXTENDING N, S, E, & W

MARCH 22, 1984 BRUCE A. SHANER (MAP FILE M96-19) FOUND BLM BRASS CAP FOR THE CN 1/16 CORNER SECTION 9

FEBRUARY 13, 2018 GREGORY D. LANG (PARTITION PLAT 2018-0004) FOUND BRASS CAP AT THE CN 1/16 CORNER SECTION 9 RECORD TIE TO FENCE CORNER PER BLM S 20°30'00" E 102.96'

JULY 26, 2000 GREGORY D. LANG (MAP FILE M135-25) FOUND BRASS CAP FOR AT THE CN 1/16 CORNER OF SECTION 9 FROM WHICH: A FIR 25-1/2" DIA., BEARS N 56-1/4° E, 50.82' AN ASH 17" DIA., BEARS N 83-1/2° W, 124.74'

AUGUST 27, 2019 GREGORY D. LANG (MAP FILE M175-77) FOUND BRASS CAP AT THE CN 1/16 CORNER OF SECTION 9

FEBRUARY 2, 2023 F. NEIL HIBBS (MAP FILE M178-61) FOUND BRASS CAP AND BT'S OF RECORD AT THE CN 1/16 CORNER OF SECTION 9

MARCH 21, 2023 GARRETT FINCH AND CREW WITH MINISTER AND GLAESER SURVEYING FOUND 3-1/4" BRASS CAP, 0.4" ABOVE GROUND FROM WHICH: AN EAST/WEST WIRE FENCE BEARS SOUTH 95.8' A NORTH/SOUTH WIRE FENCE BEARS EAST 34.5' AN OAK 20" DIA., BEARS N 79° W, 125.1' WITH HEALED BLAZE (1983) (NO PAINT, NAILS OR SIGNS ADDED TO TREE PER LANDOWNER REQUEST)

ESTABLISHED THE FOLLOWING: A FIR 18" DIA., BEARS S 52° E, 124.8' MKD: CN 1/16 S9 BT (SET CHAINING NAIL AT SIDE CENTER, NAIL AND WASHER STAMPED "PLS 2830" AT BASE OF BLAZE, BT SIGNS ON FRONT AND BACK AND PAINTED RED BAND FOR NEW BT)

117-FOUND MONUMENT

CORNER G-12, (GCDB 360540) WC TO CENTER E 1/16 CORNER OF SECTION 9 T. 28 S., R. 7 W., W.M.

APRIL 1983 - JANUARY 1984 BLM SUBDIVISION OF SECTION BY BISHOP & ROGERS UNDER GROUP NO. 1124 (DCSO RECORDS VOLUME 46, PAGE 17758) POINT FOR THE CENTER E 1/16 SECTION CORNER OF SECTION 9 IS LOCATED ON A STEEP ROCK BLUFF, 35' HIGH, WHERE IT IS IMPRACTICABLE TO ESTABLISH A PERMANENT MONUMENT. POINT SELECTED FOR THE WITNESS CORNER TO THE CENTER E 1/16 SECTION CORNER OF SECTION 9, SET AN ALUMINUM POST, 28" LONG, 2-1/2" DIA., 24" IN THE GROUND, WITH ALUMINUM CAP MKD: WC E 1/16 C-C S9 1983 FROM WHICH: A MADRONE 10" DIA., BEARS N 34° E, 49 LKS. DIST. MKD: X BT A FIR 12" DIA., BEARS S 66-1/2° W, 19 LKS. DIST. MKD: X BT

MARCH 21, 2023 GARRETT FINCH AND CREW WITH MINISTER AND GLAESER SURVEYING FOUND 3-1/4" ALUMINUM CAP, 1.5" ABOVE GROUND WITH MOUND OF STONE FROM WHICH: A MADRONE 12" DIA., BEARS N 34° E, 32.7' WITH PARTIAL HEALED BLAZE WITH SCRIBING VISIBLE AND BT SIGN (1983) A ROOTHOLE BEARS S 60° W, 14.9' WITH 12" TRUNK ALONGSIDE AND BT SIGN (1983) (SET CHAINING NAIL AT SIDE CENTER, BT SIGNS ON FRONT AND REAR, AND PAINTED RED BAND FOR EXISTING BT'S)

ESTABLISHED THE FOLLOWING: A FIR 30" DIA., BEARS S 28° W, 56.1' MKD: X ON UPPER BLAZE AND MKD: BT ON LOWER BLAZE (SET CHAINING NAIL AT SIDE CENTER, NAIL AND WASHER STAMPED "PLS 2830" AT BASE OF BLAZE, BT SIGNS ON FRONT AND BACK AND PAINTED RED BAND FOR NEW BT)

118-FOUND MONUMENT

CORNER G-13, (GCDB 400540) 1/4 CORNER OF SECTIONS 9 & 10 T. 28 S., R. 7 W., W.M.

MAY 30, 1854 (ORIGINAL) NATHANIEL FORD UNDER CONTRACT NO. 44 (DCSO RECORD VOLUME 14, PAGES 5766-67) SET 1/4 SECTION POST, FROM WHICH: A B.OAK 6" DIA., BEARS S 40° E, 21 LKS. DIST. A B.OAK 12" DIA., BEARS N 80° W, 22 LKS. DIST.

MARCH 16, 1922 G.G. STEWART, DEPUTY COUNTY SURVEYOR, A.O. STRICKLAND, A. DYSERT & A. ERICKSON (VOLUME 3, PAGE 108) RENEW OLD BT, ONE STANDING AND ONE DOWN SET IRON PIPE, MARKED: A FIR 10" DIA., BEARS N 51° E, 22.0' A B.OAK 18" DIA., BEARS N 80° W, 14.5' (O.B.T.)

118 CONT.

MARCH 1961 DOUGLAS COUNTY SURVEYORS OFFICE JAMES BYRON, DEPUTY & MILO GODFREY & CLETE PUTNAM (C.S. FILE 49/50-37) FOUND BOTH BT'S AND 1/2" IRON PIPE AT CORNER. ALL AS RECORDED BY STEWART, 1922. THE B.OAK TO NW, NOW SNAG, SHOWS GOOD SCRIBING BT THE FIR TO NE, NOW STUMP SET BRASS CAP AT CORNER MKD: COUNTY SURVEYORS OFFICE 1/4 S9 S10 T28S R7W 1961 NEW BT'S: AN 8" R.FIR BEARS S 68° E, 31.9' SCRIBED: 1/4 S10 CS BT A 15" R.FIR BEARS N 19° W, 5.7' SCRIBED: 1/4 S9 CS BT

SEPTEMBER 6, 1972 JAMES W. BYRON (MAP FILE M46-36) FOUND BRASS CAP

DECEMBER 2, 1978 VIRGIL L. BROADWATER (MAP FILE M74-50) BRASS DISK

APRIL 1983 - JANUARY 1984 BLM RESURVEY BY BISHOP & ROGERS UNDER GROUP NO. 1124 (DCSO RECORDS VOLUME 46, PAGES 17747-48) BEGINNING AT THE 1/4 SECTION CORNER OF SECTIONS 9 & 10, PERPETUATED AND RECORDED BY G.G. STEWART, DEPUTY DOUGLAS COUNTY SURVEYOR, IN 1922, FROM ORIGINAL EVIDENCE NO LONGER IN EXISTENCE, AND FURTHER PERPETUATED AND RECORDED BY JAMES W. BYRON, DEPUTY DOUGLAS COUNTY SURVEYOR, IN 1961. MONUMENTED WITH AN IRON POST, 1-1/2" DIA., FIRMLY SET, PROJECTING 12" ABOVE THE GROUND, WITH BRASS CAP MKD: COUNTY SURVEYORS OFFICE T28S 1/4 S9 S10 R7W 1961 FROM WHICH THE REMAINS OF THE BEARING TREES MARKED BY BYRON: A FIR 14" DIA., BEARS S 68° E, 49 LKS. DIST. WITH HEALED BLAZE A FIR STUMP 17" DIA., BEARS N 20° W, 8 LKS. DIST. WITH HEALED BLAZE AND A NEW BEARING TREE: A FIR 17" DIA., BEARS S 56-3/4° W, 23 LKS. DIST. MKD: 1/4 S9 BT

MARCH 31, 1993 MAURICE E. FARR (MAP FILE M118-67) FOUND BRASS CAP

MARCH 9, 2023 GARRETT FINCH AND CREW WITH MINISTER AND GLAESER SURVEYING FOUND 2-1/2" BRASS CAP, 1.2" ABOVE GROUND FROM WHICH: A ROOTHOLE BEARS N 72° E, 18' WITH 22" DIA., OAK TRUNK ALONGSIDE AND BT SIGN FROM 2002 (NO RECORD) A FIR 24" DIA., BEARS S 62° W, 14.8' WITH HEALED BLAZE AND BT SIGN (1983) A FIR STUMP 16" DIA. (7" HIGH), BEARS N 14° W, 5.5' WITH PARTIALLY HEALED BLAZE (1961) A FIR STUMP 14" DIA., ROTTED, BEARS S 72° E, 32.0' (1983) (SET CHAINING NAIL AT SIDE CENTER, BT SIGNS ON FRONT AND REAR, AND PAINTED RED BAND FOR EXISTING BT'S)

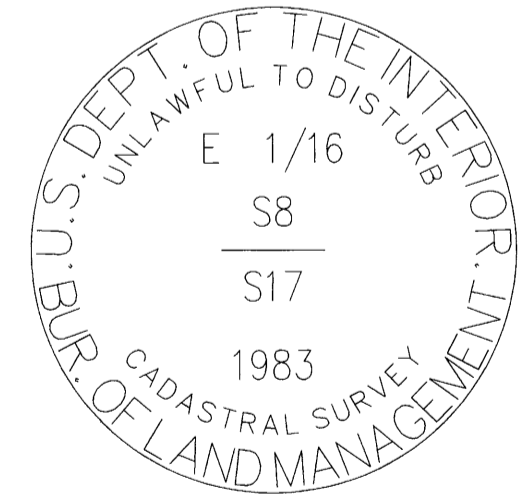
ESTABLISHED THE FOLLOWING: A FIR 12" DIA., BEARS N 22° E, 22.1' MKD: 1/4 S10 BT (SET CHAINING NAIL AT SIDE CENTER, NAIL AND WASHER STAMPED "PLS 2830" AT BASE OF BLAZE, BT SIGNS ON FRONT AND BACK AND PAINTED RED BAND FOR NEW BT)

119-FOUND MONUMENT

CORNER G-11, (GCDB 340540) CENTER 1/4 CORNER OF SECTION 9 T. 28 S., R. 7 W., W.M.

APRIL 1983 - JANUARY 1984 BLM SUBDIVISION OF SECTION BY BISHOP & ROGERS UNDER GROUP NO. 1124 (DCSO VOLUME 46, PAGES 17756-57) POINT FOR THE CENTER 1/4 CORNER OF SECTION 9, AT INTERSECTION WITH THE EAST AND WEST CENTERLINE, SET AN IRON POST, 28" LONG, 2-1/2" DIA., 24" IN THE GROUND, WITH BRASS CAP MKD: T28S R7W C 1/4 S9 1983 FROM WHICH: A CEDAR 8" DIA., BEARS N 8° E, 11 LKS. MKD: C 1/4 S9 BT A FIR 10" DIA., BEARS S 12° E, 19 LKS. MKD: C 1/4 S9 BT

MARCH 7, 2023 GARRETT FINCH AND CREW WITH MINISTER AND GLAESER SURVEYING FOUND 3" BRASS CAP, 0.5" ABOVE GROUND FROM WHICH: A FIR 16" DIA., BEARS S 24° E, 12.7' WITH HEALED BLAZE AND BT SIGN (1983) A CEDAR 12" DIA., BEARS N 15° E, 7.4' WITH PARTIALLY HEALED BLAZE (1983) (SET CHAINING NAIL AT SIDE CENTER, BT SIGNS ON FRONT AND REAR, AND PAINTED RED BAND FOR EXISTING BT'S)



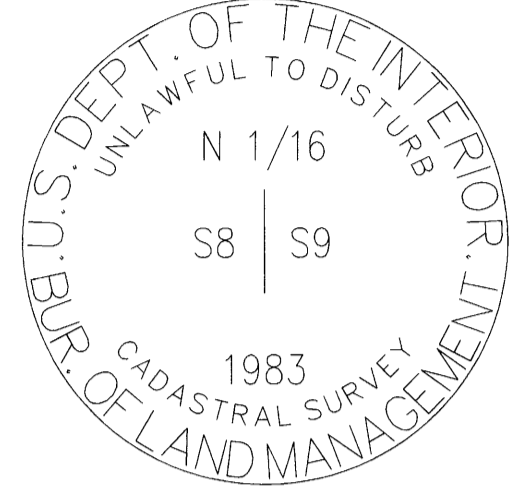
POINT NUMBER: 110



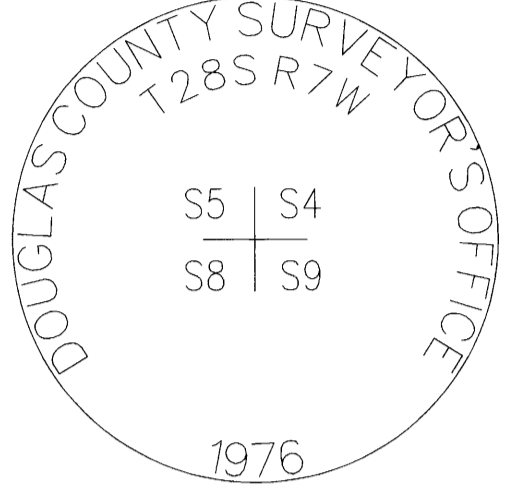
RECORD OF SURVEY

LOCATED IN A PORTION OF THE SE 1/4 OF THE SE 1/4 OF SECTION 8 THE NW 1/4, NE 1/4, SW 1/4 OF SECTION 9 T. 28 S., R. 7 W., W.M. PETTY LARSONY-TASK E DOUGLAS COUNTY, OREGON CONTRACT NO. 1204T020D0010 TASK ORDER NO. 140L4322F0063

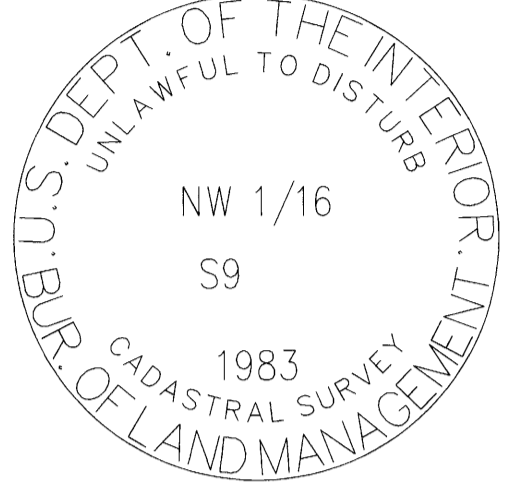
FILED DATE: 3-5-2024 BY: [Signature] THIS SURVEY CONSISTS OF: MAP: M185-3 AD NARRATIVE: CORNER RPT: DOUGLAS COUNTY SURVEYOR



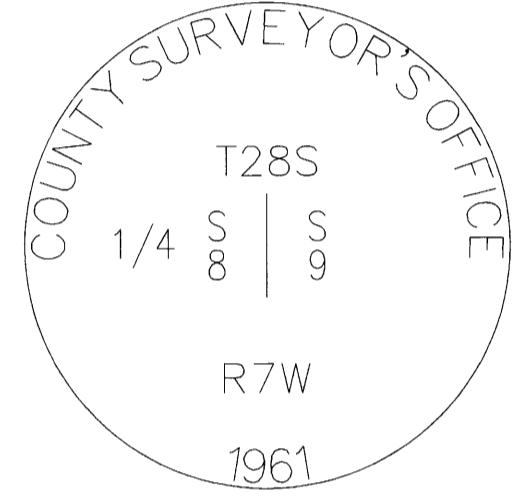
POINT NUMBER: 100



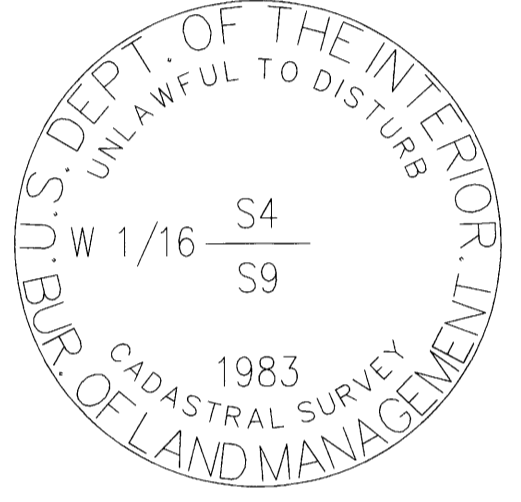
POINT NUMBER: 101



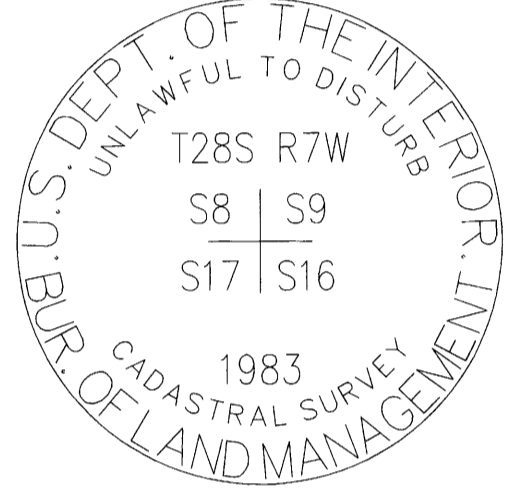
POINT NUMBER: 102



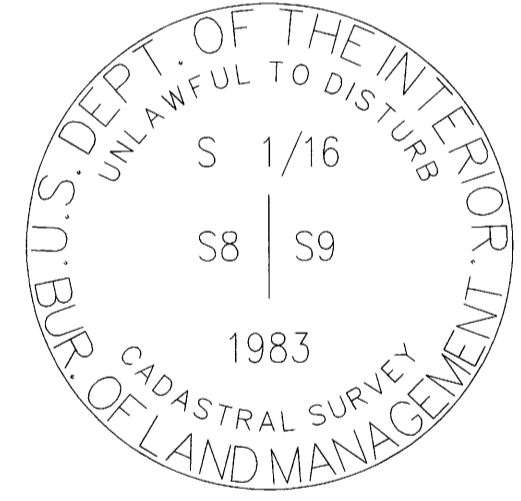
POINT NUMBER: 104



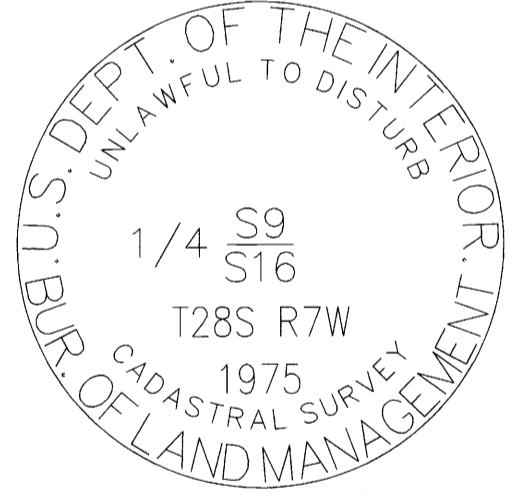
POINT NUMBER: 108



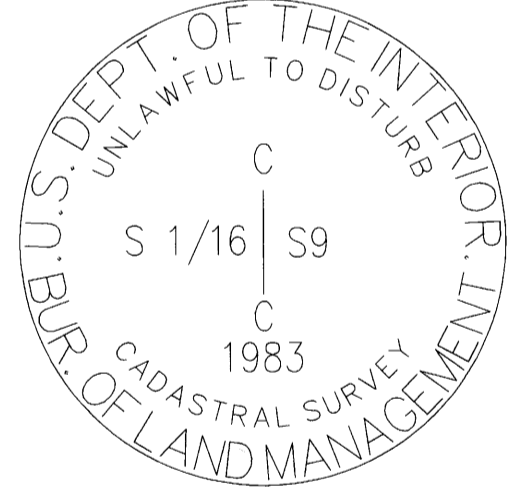
POINT NUMBER: 109



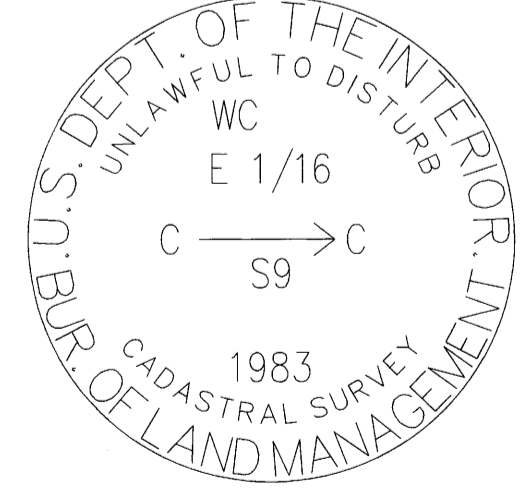
POINT NUMBER: 111



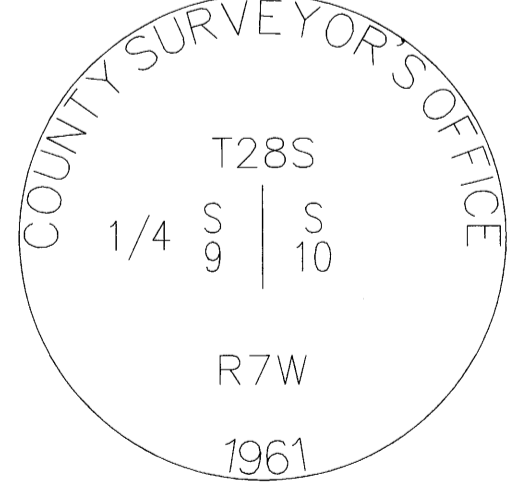
POINT NUMBER: 112



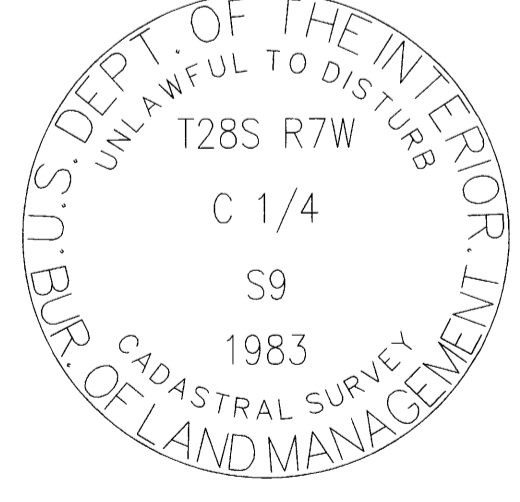
POINT NUMBER: 113



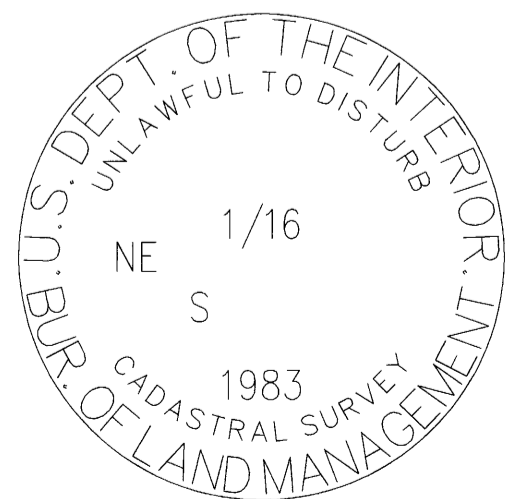
POINT NUMBER: 117



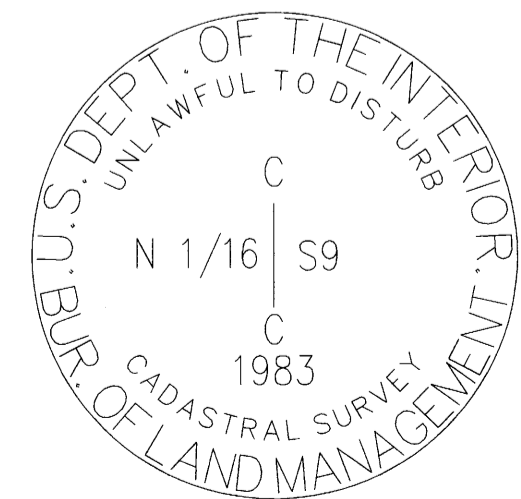
POINT NUMBER: 118



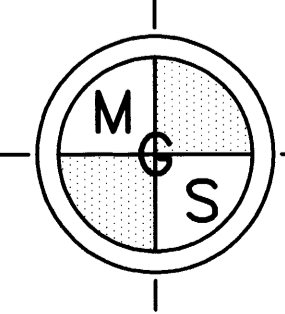
POINT NUMBER: 119



POINT NUMBER: 114



POINT NUMBER: 115



MINISTER-GLAESER SURVEYING INC. 2200 E. EVERGREEN BLVD. VANCOUVER, WA 98661 (360) 694-3313

SCALE: N/A JOB NO. 22-319 DATE: 2/26/2024 CALC BY: DAR DRAWN BY: RDH CHECKED BY: DAR SHEET 4 OF 4