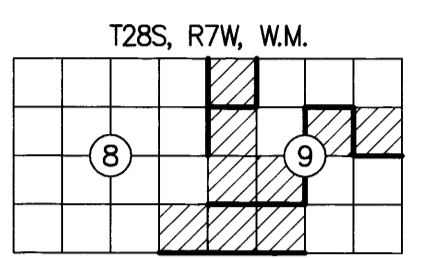


# RECORD OF SURVEY

FILED  
DATE: 3-5-2024 BY: [Signature]  
THIS SURVEY CONSISTS OF:  
MAP: M105-3-A-D  
NARRATIVE:  
CORNER RPT:  
DOUGLAS COUNTY SURVEYOR

LOCATED IN A PORTION OF  
THE SE 1/4 OF THE SE 1/4 OF SECTION 8  
THE NW 1/4, NE 1/4, SW 1/4 OF SECTION 9  
T. 28 S., R. 7 W., W.M.  
PETTY LARSONY-TASK E  
DOUGLAS COUNTY, OREGON  
CONTRACT NO. 1204T020D0010  
TASK ORDER NO. 140L4322F0063



SURVEY FOR: UNITED STATES DEPARTMENT OF THE INTERIOR BUREAU OF LAND MANAGEMENT  
ROSEBURG DISTRICT OFFICE  
777 NW GARDEN VALLEY BLVD  
ROSEBURG, OR 97471

### SHEET INDEX

- SHEET 1 VICINITY MAP, EQUIPMENT LIST, CONTROL DIAGRAM AND TABLE, CONTROL PROCEDURE, CERTIFICATES, POSTED SIGNS, AND NARRATIVE
- SHEET 2 SITE DETAILS, FOUND MONUMENT COORDINATE TABLE, REFERENCES, AND LEGEND
- SHEET 3 CORNER MONUMENT HISTORY
- SHEET 4 CORNER MONUMENT HISTORY AND MONUMENT DETAILS

### EQUIPMENT LIST:

- 2018 GMC SIERRA 2500HD SURVEY TRUCK
- TRIMBLE R12 GNSS BASE RECEIVER
- TRIMBLE R12i GNSS ROVER RECEIVER
- TRIMBLE S7 3" TOTAL STATION
- BRUNTON GEO TRANSIT COMPASS FOR BT'S (MAGNETIC DECLINATION=15' EAST)
- TRIMBLE TDL 450HX 35-WATT RADIO
- TRIMBLE TSC5 DATA COLLECTOR WITH TRIMBLE ACCESS SOFTWARE
- AUTODESK CIVIL 3D 2023
- TRIMBLE BUSINESS CENTER
- STAR-NET LEAST SQUARES ADJUSTMENT SOFTWARE

**BASIS OF BEARING:** N 39°38'22" W ALONG THE CONTROL LINE BETWEEN (MGS CONTROL POINT 55) AND (MGS CONTROL POINT 53)  
OREGON COORDINATE REFERENCE SYSTEM (OCRS), COTTAGE GROVE-CANYONVILLE ZONE, INTERNATIONAL FEET.

### NARRATIVE:

THE PURPOSE OF THIS SURVEY WAS TO FULFILL THE CONTRACT (1204T020D0010/140L4322F0063) REQUIREMENTS FOR PETTY LARSONY - TASK E CADASTRAL SURVEY AS LISTED BELOW:

- SECTION 8, T. 28 S., R. 7 W., W.M.
- SECTION 9, T. 28 S., R. 7 W., W.M.

### LOCATION OF PROJECT:

THIS PROJECT IS LOCATED APPROXIMATELY 10.3 MILES SOUTHWEST OF ROSEBURG, DOUGLAS COUNTY, OREGON.

### GENERAL NOTES:

THIS CONTRACT IS FOR BOUNDARY LINE MARKING/POSTING AND BOUNDARY LINE MAINTENANCE. WE COMPLETED THE MAINTENANCE OF 15 CORNERS, AND SURVEYED AND POSTED 3.40 MILES OF BOUNDARY.

ALL BOUNDARY WORK COMPLIED WITH THE SURVEY SPECIFICATIONS AND PROCEDURES OUTLINED IN THE BUREAU OF LAND MANAGEMENT MANUAL OF SURVEYING INSTRUCTIONS (2009). ALL CORNERS WERE MAINTAINED TO THE SPECIFICATIONS CONTAINED IN SECTION C OF THE R6 2020 CADASTRAL SURVEY IDIQ STANDARDS. SURVEY AND LAND RECORDS RESEARCH WAS PERFORMED TO VERIFY THE CHAIN OF SURVEY AT EACH CORNER PRIOR TO MAINTAINING THE CORNERS AND MARKING AND POSTING THE BOUNDARIES. BOUNDARY DELINEATOR POSTS AND SIGNS (SEE EXAMPLE SIGNS BELOW) WERE SET ALONG THE BOUNDARY WHERE GAPS IN THE EXISTING POSTING ARE FOUND AND THE BOUNDARY LINE BLAZING WAS ADDED OR REFRESHED. FENCE ENCROACHMENTS WERE FOUND IN SECTIONS 8 AND 9, SEE SHEET 2 FOR SITE DETAILS.

THE EXISTING MONUMENTS SHOWN HEREIN WERE FOUND AT ACCEPTABLE POSITIONS, WERE MONUMENTED PROPERLY AND STANDARD CORNER MAINTENANCE WAS PERFORMED.

ALL CORNER SEARCH AND EVALUATION WAS PERFORMED BY DANIEL RENTON, PLS 2830. THE PROJECT AREA IS ACCESSED BY COUNTY ROADS, PRIVATE ROADS AND OTHER FOREST ROADS.

ALL NECESSARY SIGNS AND POSTS WERE PROVIDED BY THE BUREAU OF LAND MANAGEMENT.

THE BEARINGS SHOWN HEREIN FOR BEARING TREES WERE MEASURED USING A BRUNTON GEO TRANSIT COMPASS (MAGNETIC DECLINATION=15' EAST)

THE DISTANCES AND DIAMETERS SHOWN HEREIN FOR BEARING TREES WERE MEASURED USING A STEEL LOGGERS TAPE.

### TASK AND CORNERS MAINTAINED:

- SECTION 8, T. 28 S., R. 7 W., W.M.
  - TIE POSITION, VERIFY AND MAINTAIN THE FOLLOWING CORNER:
    - MONUMENT 110 (GCDB 260500) E 1/16 CORNER OF SECTIONS 8 & 17
    - SURVEY LINE, MARK AND POST BOUNDARY SHOWN HEREIN
- SECTION 9, T. 28 S., R. 7 W., W.M.
  - TIE POSITIONS, VERIFY AND MAINTAIN THE FOLLOWING CORNERS:
    - MONUMENT 100, CORNER F-9, (GCDB 300560) N 1/16 CORNER OF SECTIONS 8 & 9
    - MONUMENT 101, CORNER E-9, (GCDB 300600) CORNER OF SECTIONS 4, 5, 8 & 9
    - MONUMENT 102, CORNER F-10, (GCDB 320560) NW 1/16 CORNER OF SECTION 9
    - MONUMENT 104, CORNER G-9, (GCDB 300540) 1/4 CORNER OF SECTIONS 8 & 9
    - MONUMENT 108, CORNER E-10, (GCDB 320600) W 1/16 CORNER OF SECTIONS 4 & 9
    - MONUMENT 109, CORNER J-9, (GCDB 300500) CORNER OF SECTIONS 8, 9, 16 & 17
    - MONUMENT 111, CORNER H-9, (GCDB 300520) S 1/16 CORNER OF SECTIONS 8 & 9
    - MONUMENT 112, CORNER J-11, (GCDB 340500) 1/4 CORNER OF SECTIONS 9 & 16
    - MONUMENT 113, CORNER H-11, (GCDB 340520) CENTER S 1/16 CORNER OF SECTIONS 9
    - MONUMENT 114, CORNER F-12, (GCDB 360560) CENTER E 1/16 CORNER OF SECTION 9
    - MONUMENT 115, CORNER F-11, (GCDB 340560) CENTER N 1/16 CORNER OF SECTION 9
    - MONUMENT 117, CORNER G-12, (GCDB 360540) WC TO CENTER E 1/16 CORNER OF SECTION 9
    - MONUMENT 118, CORNER G-13, (GCDB 400540) 1/4 CORNER OF SECTIONS 9 & 10
    - MONUMENT 119, CORNER G-11, (GCDB 340540) CENTER 1/4 CORNER OF SECTION 9
    - SURVEY LINE, MARK AND POST BOUNDARY SHOWN HEREIN

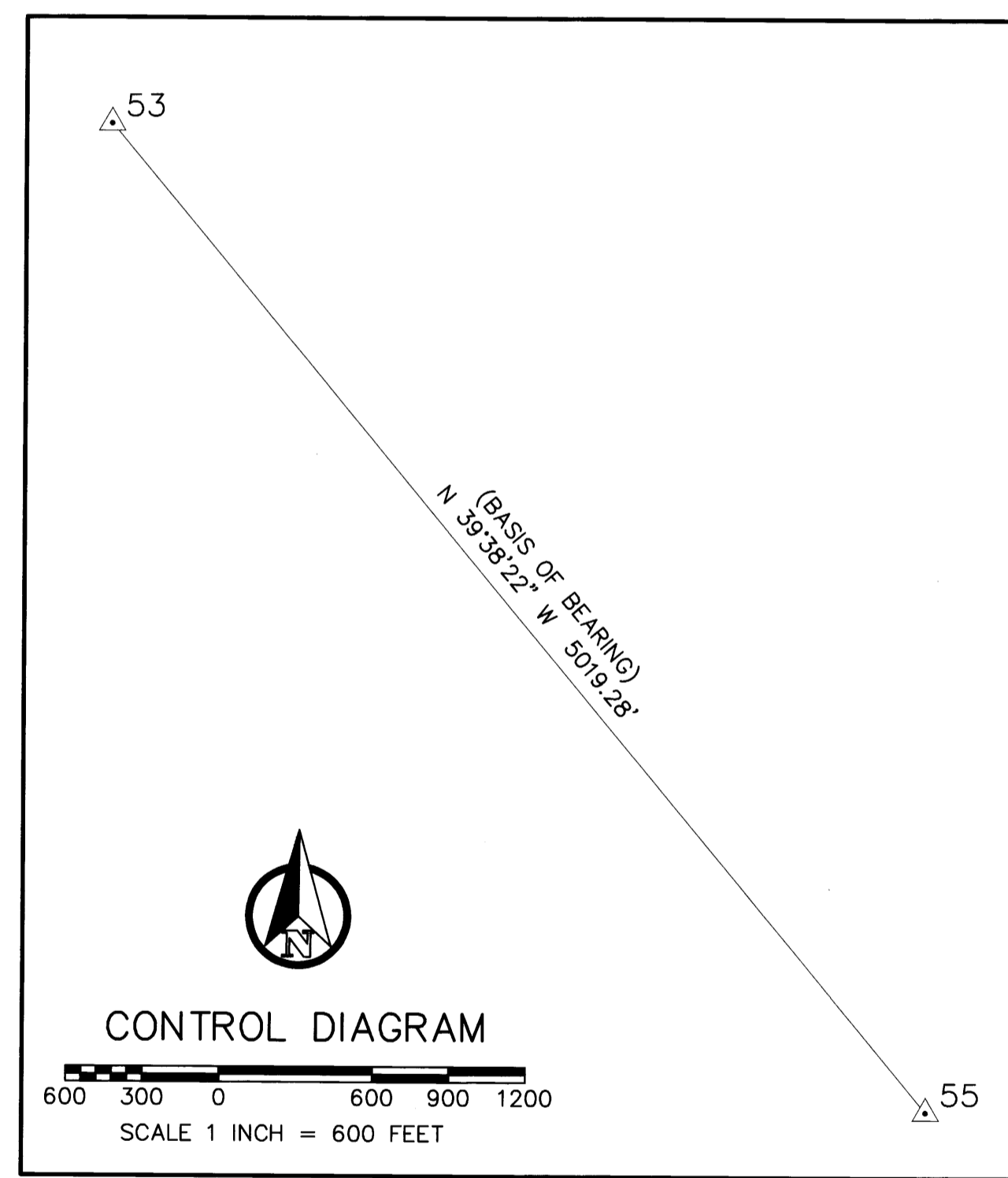
### CONTROL PROCEDURE:

A TRIMBLE R12 GNSS BASE RECEIVER WAS USED TO COLLECT OVER 8 HOURS OF STATIC DATA ON THE PRIMARY CONTROL POINTS 53 & 55. THE STATIC DATA WAS THEN POST PROCESSED USING THE NATIONAL GEODETIC SURVEY ONLINE POSITIONING USER SERVICE (OPUS).

THE SECONDARY CONTROL WAS ESTABLISHED BY USING A TRIMBLE R12 GNSS BASE RECEIVER OPERATING IN A REAL TIME KINEMATIC (RTK) MODE AND SET ON THE PRIMARY OPUS CONTROL WHILE TRANSMITTING REAL TIME CORRECTIONS TO A TRIMBLE R12i GNSS RECEIVER ALSO OPERATING IN A REAL TIME KINEMATIC (RTK) MODE. IN AREAS OF MINIMAL TREE CANOPY, THE MONUMENTS WERE TIED DIRECTLY USING A TRIMBLE R12i GNSS ROVER WHILE RECEIVING CORRECTIONS FROM PRIMARY CONTROL POINTS. IN AREAS WHERE THE TREE CANOPY WAS TOO DENSE FOR USING A TRIMBLE R12i GNSS ROVER (RTK), A CLOSED LOOP TRAVERSE WAS RUN OFF OF THE SECONDARY CONTROL USING A TRIMBLE S7 3" TOTAL STATION. EACH CONTROL TRAVERSE WAS BALANCED USING STAR-NET LEAST SQUARES ADJUSTMENT SOFTWARE.

CONTROL POINT TABLE			
POINT NO.	NORTHING	EASTING	DESCRIPTION
53	116496.83	108993.68	5/8" IRON ROD W/ 2" ALUMINUM CAP "PETTY-2"
55	112631.61	112195.75	1-1/8" BRASS DISK "SURVEY MARK"

LEGEND:  
△ INDICATES MGS CONTROL POINT



UNITED STATES DEPARTMENT OF THE INTERIOR BUREAU OF LAND MANAGEMENT

## BOUNDARY

NO TIMBER MAY BE CUT OR REMOVED WITHOUT AUTHORIZATION

T.  R.  SEC.  LINE IS APPROX.  FT.

CORNER IS APPROX.  FT.

POSTED BY  DATE

BLM OFFICE IS LOCATED AT

UNITED STATES DEPARTMENT OF THE INTERIOR BUREAU OF LAND MANAGEMENT

## BEARING TREE

IT IS UNLAWFUL TO DESTROY, DEFACE, CHANGE OR REMOVE ANY CORNER OF THE PUBLIC LAND SURVEYS OR TO CUT DOWN OR DEFACE ANY BEARING TREE PERTAINING TO SUCH SURVEYS.

CORNER IS APPROXIMATELY  DISTANCE  DIRECTION

T.  R.  SEC.  POSTED BY  DATE

## LAND SURVEY MONUMENT

### PLEASE DO NOT DISTURB

THIS MONUMENT WAS LOCATED AS PART OF AN OFFICIAL LAND SURVEY. IT HELPS DEFINE LAND OWNERSHIP LINES.

FOR FURTHER INFORMATION CONTACT THE BUREAU OF LAND MANAGEMENT

REGISTERED PROFESSIONAL LAND SURVEYOR

Daniel A. Renton

OREGON

JUNE 30, 1997

DANIEL A. RENTON 2830

Expires 12-31-2024

MINISTER AND GLAESER SURVEYING, INC. MAKES NO WARRANTIES AS TO MATTERS OF UNWRITTEN TITLE SUCH AS ADVERSE POSSESSION, ACQUESCENCE, ESTOPPEL, ETC.

MINISTER-GLAESER SURVEYING INC.

2200 E. EVERGREEN BLVD. VANCOUVER, WA 98661 (360) 694-3313

SCALE: 1"=600'

JOB NO. 22-319

DATE: 2/26/2024

CALC BY: DAR

DRAWN BY: RDH

CHECKED BY: DAR

SHEET 1 OF 4

# RECORD OF SURVEY

FILED  
 DATE: 3-5-2024 BY: [Signature]  
 THIS SURVEY CONSISTS OF:  
 MAP: M185-3-A-D  
 NARRATIVE:  
 CORNER RPT:  
 DOUGLAS COUNTY SURVEYOR

LOCATED IN A PORTION OF  
 THE SE 1/4 OF THE SE 1/4 OF SECTION 8  
 THE NW 1/4, NE 1/4, SW 1/4 OF SECTION 9  
 T. 28 S., R. 7 W., W.M.  
 PETTY LARSONY-TASK E  
 DOUGLAS COUNTY, OREGON  
 CONTRACT NO. 1204T020D0010  
 TASK ORDER NO. 140L4322F0063

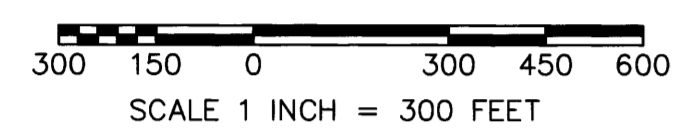
- SURVEY REFERENCES:**
- (1957) SURVEY, MAP FILE M4-74
  - (1966) POWELL SURVEY, C.S. FILE 52/79-1
  - (1969) BOYER SURVEY, MAP FILE M38-26
  - (1969) BOYER SURVEY, MAP FILE M38-49
  - (1971) BOYER SURVEY, MAP FILE M41-43
  - (1972) BROADWATER SURVEY, MAP FILE M44-46
  - (1974) NORTHRAFT SURVEY, MAP FILE M54-54
  - (1974) BAUGHMAN SURVEY, MAP FILE M55-1
  - (1976) BROADWATER SURVEY, MAP FILE M68-69
  - (1978) BROADWATER SURVEY, MAP FILE M74-50
  - (1984) BAUGHMAN SURVEY, C.S. FILE 58/144, R.M. 3-62
  - (1984) SHANER SURVEY, MAP FILE M96-19
  - (1988) JOHNSTONE SURVEY, MAP FILE M101-45
  - (1994) FARR SURVEY, MAP FILE M118-67
  - (1996) BROADWATER SURVEY, MAP FILE M126-18
  - (2000) LANG SURVEY, MAP FILE M135-25
  - (2018) PARTITION PLAT BY LANG, 2018-0004
  - (2019) BOUNDARY LINE ADJUSTMENT BY LANG, MAP FILE M175-77
  - (2023) HIBBS SURVEY, MAP FILE M178-61

- BLM REFERENCES:**
- (1854) GLO ORIGINAL SURVEY AND NOTES FOR T. 28 S., R. 7 W., W.M. EXECUTED BY NATHANIEL FORD CONTRACT #44 MAY 30, 1854 SURVEYED MARCH 9, 1855 PLAT MAP DATED AUGUST 6, 1928 (975)
  - (1975) BUREAU OF LAND MANAGEMENT RESURVEY AND NOTES FOR T. 28 S., R. 7 W., W.M. EXECUTED BY JAMES E. JELLEY GROUP #878 COMMENCED 7/24/1975 - COMPLETED 8/20/1975 DEPENDENT RESURVEY DATED 3/3/1978 (5634)
  - (1983) BUREAU OF LAND MANAGEMENT RESURVEY AND NOTES FOR T. 28 S., R. 7 W., W.M. EXECUTED BY LANCE J. BISHOP & WAYNE L. ROGERS GROUP #1124 COMMENCED 4/18/1983 - COMPLETED 1/6/1984 DEPENDENT RESURVEY DATED 2/15/1985 (6038)
  - (1991) BUREAU OF LAND MANAGEMENT RESURVEY AND NOTES FOR T. 28 S., R. 7 W., W.M. EXECUTED BY BRYAN S. SEIBOLD & ROBERT J. CHAPPEL GROUP #1585 COMMENCED 5/1/1991 - COMPLETED 5/26/1994 DEPENDENT RESURVEY DATED 11/12/1997 (6802 & 6803)

MONUMENT TABLE			
POINT NO.	NORTHING	EASTING	DESCRIPTION
100	116761.32	108610.65	3-1/4" ALUMINUM CAP
101	118059.78	108623.00	2-1/2" BRASS CAP
102	116650.26	109858.37	3" BRASS CAP
104	115465.80	108599.64	2-1/2" BRASS CAP
108	117909.13	109857.67	3" BRASS CAP
109	112936.60	108555.46	3-1/4" ALUMINUM CAP
110	112942.95	107202.79	3-1/4" BRASS CAP
111	114201.23	108577.52	3-1/4" ALUMINUM CAP
112	112788.18	111140.89	3-1/4" BRASS CAP
113	114052.26	111128.71	3-1/4" ALUMINUM CAP
114	116496.99	112412.33	3" BRASS CAP
115	116536.63	111105.79	3-1/4" BRASS CAP
117	115238.66	112408.01	3-1/4" ALUMINUM CAP
118	115160.00	113717.62	2-1/2" BRASS CAP
119	115316.21	111116.85	3" BRASS CAP
121	112862.83	109850.46	5/8" IRON ROD W/ YPC
123	116524.69	111499.43	5/8" IRON ROD W/ YPC
124	116535.60	111139.58	5/8" IRON ROD W/ YPC
125	114126.43	109854.30	5/8" IRON ROD W/ YPC
127	117757.15	111094.42	2-1/2" BRASS CAP

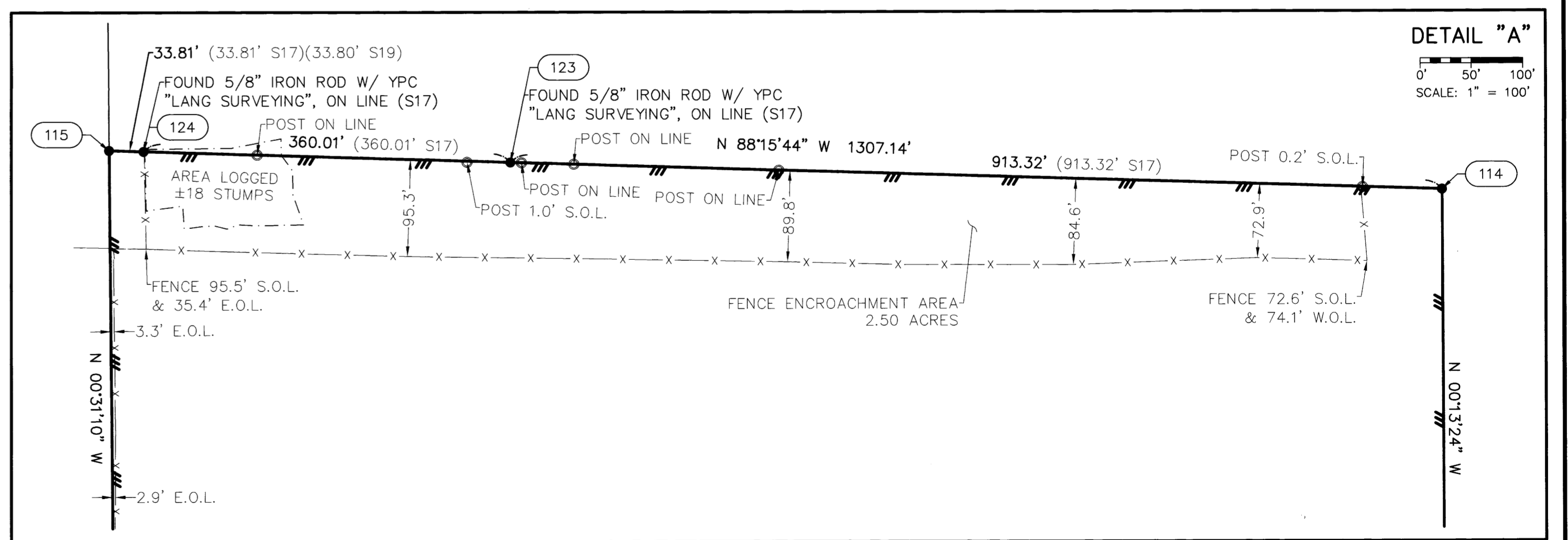
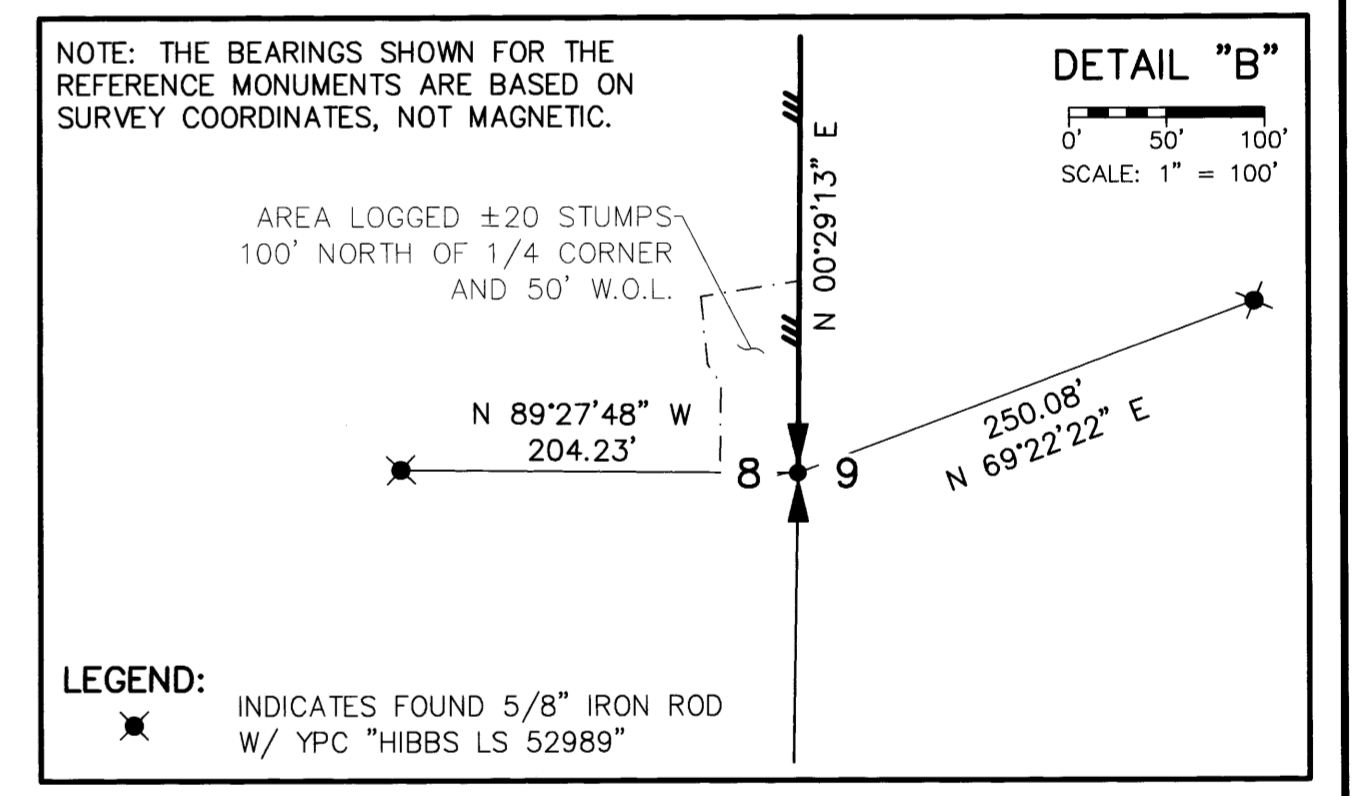
LINE TABLE		
LINE	BEARING	DISTANCE
L1	N 55°22'27" W	465.48'
L2	S 20°54'59" W	1103.77'

REGISTERED PROFESSIONAL LAND SURVEYOR  
 Daniel A. Renton  
 OREGON  
 JUNE 30, 1997  
 DANIEL A. RENTON  
 2830  
 Expires 12-31-2024



- LEGEND:**
- INDICATES MONUMENT FOUND AS NOTED IN TABLES ON SHEETS 3 & 4
  - △ INDICATES MGS CONTROL POINT SEE CONTROL TABLE ON SHEET 1
  - (S#) INDICATES RECORD DATA PER SURVEY REFERENCE NUMBER
  - (BLM#) INDICATES RECORD DATA PER BUREAU OF LAND MANAGEMENT REFERENCE NUMBER
  - T. INDICATES TOWNSHIP
  - R. INDICATES RANGE
  - SEC. INDICATES SECTION
  - GLO INDICATES GENERAL LAND OFFICE
  - BT INDICATES BEARING TREE
  - CH INDICATES CHAINS (1 CHAIN=66 FEET)
  - LKS INDICATES LINKS (1 LINK=0.66 FEET)
  - MKD INDICATES MARKED
  - WC INDICATES WITNESS CORNER
  - W/ INDICATES WITH
  - YPC INDICATES YELLOW PLASTIC CAP
  - ALUM. INDICATES ALUMINUM
  - CONT. INDICATES CONTINUED
  - N.O.L. INDICATES NORTH OF LINE
  - E.O.L. INDICATES EAST OF LINE
  - S.O.L. INDICATES SOUTH OF LINE
  - W.O.L. INDICATES WEST OF LINE
  - INDICATES BOUNDARY LINE, MARKED AND POSTED
  - - - INDICATES SECTION SUBDIVISION
  - x-x- INDICATES CENTERLINE OF ROAD
  - x-x- INDICATES FENCE LINE

- PLSS CORNERS**
- ## ## # # #
  - ## ## # # #
  - ## ## # # #
  - ## ## # # #



SCALE: 1"=300'  
 JOB NO. 22-319  
 DATE: 2/26/2024  
 CALC BY: DAR  
 DRAWN BY: RDH  
 CHECKED BY: DAR  
 SHEET 2 OF 4

**MINISTER-GLAESER SURVEYING INC.**  
 2200 E. EVERGREEN BLVD.  
 VANCOUVER, WA 98661  
 (360) 694-3313

100—FOUND MONUMENT

CORNER F-9, (GCDB 300560) N 1/16 CORNER OF SECTIONS 8 & 9 T. 28 S., R. 7 W., W.M.

FEBRUARY 1972 VIRGIL L. BROADWATER (MAP FILE M44-46) SET 1" IRON PIPE, 30" IN GROUND, 6" ABOVE GROUND FROM WHICH: A D.FIR 12" DIA., BEARS N 42°30' E, 17.0' MKD: 1/16 S9 BT A MADRONE 16" DIA., BEARS S 17°30' E, 15.6' MKD: 1/16 S9 BT A D.FIR 14" DIA., BEARS N 79°30' W, 29.1' MKD: 1/16 S8 BT

APRIL 1983 - JANUARY 1984 BLM RESURVEY BY BISHOP AND ROGERS UNDER GROUP NO. 1124 (DCSO RECORDS VOLUME 46, PAGE 17752)

THE N 1/16 SECTION CORNER OF SECTIONS 8 & 9, ESTABLISHED AND RECORDED BY VIRGIL L. BROADWATER, REGISTERED LAND SURVEYOR NO. 682, IN 1972, AND ACCEPTED AS THE CORNER, MONUMENTED WITH AN IRON PIPE, 1" DIA., FIRMLY SET, PROJECTING 4" ABOVE THE GROUND, FROM WHICH BEARING TREES MKD. BY BROADWATER: A FIR 14" DIA., BEARS N 42-1/2° E, 27 LKS. DIST. WITH SCRIBE MARKS 1/16 VISIBLE ON AN OPENED BLAZE A MADRONE 16" DIA., BEARS S 17-1/2° E, 24 LKS DIST. WITH SCRIBE MARKS 1/16 S9 BT VISIBLE ON A PARTIALLY HEALED BLAZE A FIR 16" DIA., BEARS N 79-1/2° W, 45 LKS. DIST. WITH HEALED BLAZE AND A BEARING TREE OF NO KNOWN RECORD. A FIR 14" DIA., BEARS S 04° E, 22 LKS. DIST. WITH HEALED BLAZE AT THE CORNER POINT, SET AN ALUMINUM POST, 28" LONG, 2-1/2" DIA., 22" IN THE GROUND, DIRECTLY ATOP THE 1" IRON PIPE, WITH ALUMINUM CAP MKD: N 1/16 S8 S9 1983

MARCH 3, 2023 GARRETT FINCH AND CREW WITH MINISTER AND GLAESER SURVEYING FOUND 3-1/4" ALUMINUM CAP, 0.5' ABOVE GROUND FROM WHICH: A STUMP 10" DIA. (4" HIGH), BEARS N 82° W, 40.0' (NO RECORD) A STUMP 12" DIA, BEARS S 88° W, 34.0' WITH HEALED BLAZE (NO RECORD) A STUMP 6" DIA. (3" HIGH), BEARS N 20° E, 14.1' (NO RECORD) A STUMP 12" DIA. (5" HIGH), BEARS N 76° W, 29.5' WITH HEALED BLAZE (1972) A STUMP 8" DIA., BEARS S 48° E, 8.2' TO ROOTHOLE, STUMP BROKEN OFF AND LYING ALONGSIDE WITH HEALED BLAZE (NO RECORD) A STUMP 12" DIA., BEARS N 40° E, 17.5' TO ROOTHOLE, STUMP BROKEN OFF AND LYING ALONGSIDE (1972) NOTE: ALL STUMPS FOUND HAD A METAL TOP (SET CHAINING NAIL AT SIDE CENTER, BT SIGNS ON FRONT AND REAR, AND PAINTED RED BAND FOR EXISTING BT'S)

ESTABLISHED THE FOLLOWING: A FIR 8" DIA., BEARS N 18° W, 16.5' MKD: N 1/16 S8 BT A FIR 6" DIA., BEARS N 46° E, 18.7' MKD: N 1/16 S9 BT (SET CHAINING NAIL AT SIDE CENTER, NAIL AND WASHER STAMPED "PLS 2830" AT BASE OF BLAZE, BT SIGNS ON FRONT AND BACK AND PAINTED RED BAND FOR NEW BT)

101—FOUND MONUMENT

CORNER E-9, (GCDB 300600) CORNER OF SECTIONS 4, 5, 8 & 9 T. 28 S., R. 7 W., W.M.

MAY 30, 1854 (ORIGINAL) NATHANIEL FORD UNDER CONTRACT NO. 44 (DCSO RECORD VOLUME 14, PAGE 5772) SET A POST, CORNER OF SECTIONS 4, 5, 8 & 9, FROM WHICH: A B.OAK 10" DIA., BEARS S 33° E, 64 LKS. DIST. A B.OAK 7" DIA., BEARS N 40° E, 65 LKS. DIST. A B.OAK 18" DIA., BEARS S 78° W, 26 LKS. DIST. A W.OAK 8" DIA., BEARS N 40° W, 762 LKS. DIST.

1924 GLO RESURVEY BY MENSCH (DCSO RECORDS VOLUME 14, PAGES 5891-92) INTERSECT THE POINT FOR SECTION CORNER LOCATED BY RECORD MEASUREMENT FROM THE ORIGINAL BEARING TREES, MARKS ON WHICH THESE TREES ARE OVERGROWN, BLAZES ARE PLAIN. NE TREE OPENED. AT THE EXACT CORNER POINT, SET AN IRON POST, 3' LONG, 2" DIA., 28" IN THE GROUND, WITH BRASS CAP MKD: T28S R7W S4 S5 S8 S9 1924 FROM WHICH THE ORIGINAL BEARING TREES: A B.OAK 14" DIA., BEARS N 79° E, 65 LKS. DIST. A B.OAK 18" DIA., BEARS S 70° E, 64 LKS. DIST. (NOT S 33° E) A B.OAK 30" DIA., BEARS S 80° W, 26 LKS. DIST. (NOT S 78° W) A W.OAK 20" DIA., BEARS N 38° W, 162 LKS. DIST. (NOT N 40° W, 762 LKS.) NEW BT'S: AN ASH 8" DIA., BEARS N 77° E, 18 LKS. DIST. MKD: T28S R7W S4 BT A CEDAR 10" DIA., BEARS S 77° E, 19 LKS. DIST. MKD: T28S R7W S9 BT A FIR 16" DIA., BEARS S 55° W, 34 LKS. DIST. MKD: T28S R7W S8 BT A CEDAR 10" DIA., BEARS N 62° W, 23 LKS. DIST. MKD: T28S R7W S5 BT

FEBRUARY - MARCH 1961 DOUGLAS COUNTY SURVEYORS OFFICE JAMES W. BYRON, MILO GODFREY, & CLETE PUTNAM (C.S. FILE 49/50-36) FOUND BRASS CAP AT CORNER FROM WHICH: A STUMP OF 8" NOW 14" ASH, BEARS N 77° E, 11.9' SHOWS GOOD SCRIBING NOW 16" CEDAR, DOWN, BEARS N 62° W, 15.2' SHOWS GOOD SCAR NO OTHER ORIGINAL OR 1924 SURVEY BT'S FOUND NEW BT'S: A W.OAK 6" DIA., BEARS N 41° E, 27.3' MKD: S4 T28S R7W CS BT A CEDAR 18" DIA., BEARS S 61-1/2° W, 49.5' MKD: S8 T28S R7W CS BT A W.OAK 5" DIA., BEARS N 19° E, 23.5' MKD: S4 CS BT NO TREES NEAR TO NW A R.FIR 18" DIA., BEARS S 5-1/2° E, 56.0' MKD: T28S R7W CS BT

FEBRUARY 1972 VIRGIL BROADWATER (MAP FILE M44-46) FOUND BRASS CAP

NOVEMBER 1974 HERBERT L. NORTHCRAFT FOUND 2 WITNESS TREES FOR CORNER AND NO BRASS CAP AN OAK, 6" DIA., BEARS N 41° E, 27.3' A FIR, 16" DIA., BEARS S 5-1/2° W, 56.1' AN OAK, 6" DIA., BEARS N 19° E, 23.5' (DISREGARDED)

OCTOBER 4, 1976 DOUGLAS COUNTY SURVEYORS OFFICE L.E. MONREAN & P.L. EARLE (C.S. FILE 59/74-22) FOUND NO TRACE OF BRASS CAP SET IN 1924 DID NOT FIND ANY ORIGINAL OR 1924 RESURVEY BT'S THREE BT'S FROM 1961 RENEWAL STILL STANDING, FROM WHICH I SET A BRASS CAP AFTER OPENING A W.OAK AND FINDING SCRIBING "T28S R7W S4 CS" ON THE UPPER BLAZE SET A BRAS CAP AT SECTION CORNER STAMPED: DOUGLAS COUNTY SURVEYORS OFFICE T28S R7W S4 S5 S8 S9 1976 FROM WHICH: A W.OAK 6" NOW 8" BEARS N 41° E, 27.3' WITH DOUBLE BLAZE AND MKD: T28S R7W S4 CS ON UPPER BLAZE AND LOWER BLAZE IS WELL HEALED A W.OAK 5" NOW 7" BEARS N 19° E, 23.5' WITH WELL HEALED DOUBLE BLAZE A R.FIR 18" NOW 24" BEARS S 2-1/2° E, 56.0' (REC S 5-1/2° E) WITH WELL HEALED DOUBLE BLAZE A CEDAR 18", NOW A WINDFALL, BEARS S 61-1/2° W, 49.5' LAYING BLAZE DOWN NEW BT: A 7" I.CEDAR BEARS N 65-1/2° W, 26.1' WITH DOUBLE BLAZE MKD: T28S R7W S5 CS BT

101 CONT.

APRIL 1983 - JANUARY 1984 BLM RESURVEY BY BISHOP AND ROGERS UNDER GROUP NO. 1124 (DCSO RECORDS VOLUME 46, PAGES 17752-53) THE CORNER OF SECTIONS 4, 5, 8 & 9, PERPETUATED & RECORDED BY JAMES W. BYRON, DEPUTY DOUGLAS COUNTY SURVEYOR, IN 1961, FROM A BT MARKED BY MENSCH, NO LONGER IN EXISTENCE, AND FURTHER PERPETUATED AND RECORDED BY LARRY MONREAN, DEPUTY DOUGLAS COUNTY SURVEYOR, IN 1976, MONUMENTED WITH AN IRON PIPE, 1-1/4" DIA., PROJECTING 10" ABOVE GROUND, WITH PROPERLY MARKED BRASS CAP. FROM WHICH THE REMAINS OF BEARING TREES MKD. BY BYRON: A W.OAK 6" DIA., BEARS N 19° E, 36 LKS. WITH HEALED DOUBLE BLAZE A W.OAK 8" DIA., BEARS N 41° E, 41 LKS. WITH MARKS T28S R7W S4 CS VISIBLE ON OPENED BLAZE A FIR 18" DIA., BEARS S 5-1/2° E, 86 LKS. WITH HEALED DOUBLE BLAZE AND BEARING TREES MKD. BY MONREAN: A CEDAR 8" DIA., BEARS N 65-1/2° W, 40 LKS. DIST. WITH SCRIBE MARKS T28S R7W S5 CS BT VISIBLE ON PARTIALLY HEALED BLAZE AND A NEW BEARING TREE: A FIR 8" DIA., BEARS S 60-1/2° W, 62 LKS. DIST. MKD: T28S R7W S8 BT

MAY 1991 - MAY 1994 BLM DEPENDENT RESURVEY BY BRYAN S. SEIBOLD, ROBERT J. CHAPPEL, CADASTRAL SURVEYORS UNDER GROUP NO. 1585

(DCSO RECORDS VOLUME 52, PAGES 2001-4) THE CORNER OF SECTIONS 4, 5, 8 & 9, MONUMENTED WITH AN IRON POST, 1-1/2" DIA., FIRMLY SET, PROJECTING 3" ABOVE GROUND, WITH BRASS CAP MKD: DOUGLAS COUNTY SURVEYORS OFFICE T28S R7W S4 S5 S8 S9 1976 FROM WHICH THE REMAINS OF THE BEARING TREES MKD. BY JAMES W. BYRON, DEPUTY COUNTY SURVEYOR, IN 1961: AN OAK 7" DIA., BEARS N 16-1/2° E, 36 LKS. DIST. WITH HEALED DOUBLE BLAZE (REC. N 19° E) AN OAK 9" DIA., BEARS N 39-1/2° E, 41 LKS DIST. WITH FRAGMENTARY SCRIBE MARKS VISIBLE ON PARTIALLY HEALED UPPER BLAZE OF DOUBLE BLAZE (REC. N 41° E) A FIR 20" DIA., BEARS S 5-1/2° E, 86 LKS. DIST. WITH HEALED DOUBLE BLAZE AND A BEARING TREE MKD. BY LARRY E. MONREAN, DEPUTY COUNTY SURVEYOR, IN 1976: A CEDAR 10" DIA., BEARS N 65-1/2° W, 40 LKS. DIST. WITH FRAGMENTARY SCRIBE MARKS VISIBLE ON PARTIALLY HEALED DOUBLE BLAZE AND A BEARING TREE MKD. BY ROGERS AND BISHOP: A FIR 12" DIA., BEARS S 60-1/2° W, 62 LKS. DIST. WITH HEALED DOUBLE BLAZE THE CORNER IS LOCATED NORTH, 0.40 CHAINS DIST. OF A DIRT ROAD, 20 LKS. WIDE, BEARS NE & SW

MARCH 20, 2023 GARRETT FINCH AND CREW WITH MINISTER AND GLAESER SURVEYING FOUND 2-1/2" BRASS CAP, 0.2' ABOVE GROUND FROM WHICH: AN OAK 8" DIA., BEARS N 18° E, 23.4' WITH BT SIGN (1961) AN OAK 12" DIA., BEARS N 40° E, 27.3' WITH HEALED BLAZE (1961) A CEDAR 12" DIA., BEARS N 62° W, 26.0' WITH HEALED BLAZE (1976) A FIR 16" DIA., BEARS S 59° W, 40.5' WITH HEALED BLAZE (1984) A FIR 22" DIA., BEARS S 07° E, 55.9' WITH HEALED BLAZE (1976) (SET CHAINING NAIL AT SIDE CENTER, BT SIGNS ON FRONT AND REAR, AND PAINTED RED BAND FOR EXISTING BT'S)

102—FOUND MONUMENT

CORNER F-10, (GCDB 320560) NW 1/16 CORNER OF SECTION 9 T. 28 S., R. 7 W., W.M.

APRIL 1983 - JANUARY 1984 BLM RESURVEY BY BISHOP AND ROGERS UNDER GROUP NO. 1124 (DCSO RECORDS VOLUME 46, PAGE 17760) THE CORNER OF THE NW 1/16 SECTION CORNER OF SECTION 9, SET AN IRON POST, 28" LONG, 2-1/2" DIA., 24" IN THE GROUND, WITH BRASS CAP MKD: NW 1/16 S9 1983 FROM WHICH: A FIR 10" DIA., BEARS N 71-1/4° E, 9 LKS. DIST. MKD: NW 1/16 S9 BT A FIR 8" DIA., BEARS S 23-1/2° E, 52 LKS. DIST. MKD: NW 1/16 S9 BT

MARCH 22, 1984 BRUCE A. SHANER (MAP FILE M96-19) FOUND BLM BRASS CAP FOR THE NW 1/16 CORNER SECTION 9

JULY 26, 2000 GREGORY D. LANG (MAP FILE M135-25) FOUND BRASS CAP AT THE NW 1/16 CORNER FROM WHICH: A 15-1/2" FIR BEARS N 71-1/4° E, 5.94' A 14-1/2" FIR BEARS S 23-1/2° E, 34.32'

FEBRUARY 2, 2023 F. NEIL HIBBS (MAP FILE M178-61) FOUND BRASS CAP AND BT'S OF RECORD FOR THE NW 1/16 CORNER SECTION 9

MARCH 6, 2023 GARRETT FINCH AND CREW WITH MINISTER AND GLAESER SURVEYING FOUND 3" BRASS CAP, 0.4' ABOVE GROUND IN EAST/WEST BARB WIRE FENCE LINE FROM WHICH: A 7" DIA. WOOD POST BEARS 1.7' WEST A FIR 16" DIA. (DEAD), BEARS N 70° E, 5.9' WITH HEALED BLAZE (BLM 1984) A FIR 14" DIA. (DEAD), BEARS S 24° E, 34.4' WITH HEALED BLAZE (BLM 1984) (SET CHAINING NAIL AT SIDE CENTER, BT SIGNS ON FRONT AND REAR, AND PAINTED RED BAND FOR EXISTING BT'S)

ESTABLISHED THE FOLLOWING: A FIR 10" DIA., BEARS N 00° E, 86.1' MKD: NW 1/16 S9 BT A FIR 8" DIA., BEARS N 68° W, 62.7' MKD: NW 1/16 S9 BT (SET CHAINING NAIL AT SIDE CENTER, NAIL AND WASHER STAMPED "PLS 2830" AT BASE OF BLAZE, BT SIGNS ON FRONT AND BACK AND PAINTED RED BAND FOR NEW BT'S)

104—FOUND MONUMENT

CORNER G-9, (GCDB 300540) 1/4 CORNER OF SECTIONS 8 & 9 T. 28 S., R. 7 W., W.M.

MAY 30, 1854 (ORIGINAL) NATHANIEL FORD UNDER CONTRACT NO. 44 (DCSO RECORD VOLUME 14, PAGE 5772) SET 1/4 SECTION POST, FROM WHICH: A B.OAK 30" DIA., BEARS S 20° E, 150 LKS. A B.OAK 7" DIA., BEARS S 25° W, 165 LKS.

FEBRUARY 1953 CLAUDE KERR (C.S. FILE 41/120) A 3 X 4 CEDAR STAKE WAS SET BY PROPORTIONAL MEASURE (2567.1') A 12" CEDAR BEARS N 70° E, 11.6' MKD: 1/4 S BT A 12" LAUREL BEARS S 76° W, 26.6'

FEBRUARY - MARCH 1961 DOUGLAS COUNTY SURVEYOR OFFICE JAMES BYRON, MILO GODFREY & CLETE PUTNAM (C.S. FILE 49/50-37) FOUND BOTH BT'S AS RECORDED BY KERR, 1953 SET BRASS CAP AT CORNER MKD: COUNTY SURVEYORS OFFICE T28S 1/4 S8 S9 R7W 1961

104 CONT.

FEBRUARY 18, 1972 VIRGIL L. BROADWATER (C.S. FILE 55/239 AND M44-46) FOUND BRASS CAP, SET 1961 COUNTY SURVEYOR 18" CEDAR BEARS N 70° E, 11.6' SHOWS GOOD SCAR 15" MADRONE BEARS S 76° W, 27.0'

FEBRUARY 27, 1978 VIRGIL L. BROADWATER (MAP FILE M68-69) FOUND BRASS CAP

DECEMBER 2, 1978 VIRGIL L. BROADWATER (MAP FILE M74-50) FOUND BRASS DISK

APRIL 1983 - JANUARY 1984 BLM RESURVEY BY BISHOP & ROGERS UNDER GROUP NO. 1124 (DCSO RECORDS VOLUME 46, PAGES 17751)

THE 1/4 SECTION CORNER OF SECTIONS 8 & 9, REESTABLISHED BY PROPORTIONAL MEASUREMENT BY CLAUDE KERR, REGISTERED LOGGING ENGINEER, NO. 2125, IN 1953, PERPETUATED BY JAMES W. BYRON, DEPUTY DOUGLAS COUNTY SURVEYOR, IN 1961, AND ACCEPTED AS THE CORNER, MONUMENTED WITH AN IRON PIPE, 1-1/4" DIA., PROJECTING 8" ABOVE GROUND, WITH BRASS CAP MKD: COUNTY SURVEYORS OFFICE T28S 1/4 S8 S9 R7W 1961 FROM WHICH BEARING TREES BY KERR: A CEDAR 18" DIA., BEARS N 74-3/4° E, 19 LKS. DIST. WITH HEALED DOUBLE BLAZE A MADRONE 18" DIA., BEARS S 76-1/2° W, 42 LKS. DIST. WITH HEALED DOUBLE BLAZE

DECEMBER 1996 VIRGIL BROADWATER (MAP FILE M126-18) FOUND BRASS CAP MKD: COUNTY SURVEYORS OFFICE T28S 1/4 S8 S9 R7W 1961

MARCH 6, 2023 GARRETT FINCH AND CREW WITH MINISTER AND GLAESER SURVEYING FOUND 2-1/2" BRASS CAP, 0.7' ABOVE GROUND FROM WHICH: A CEDAR STUMP 30" DIA. (2" HIGH), BEARS N 80° E, 12.2' (1984) A MADRONE STUMP 28" DIA. (2"HIGH), BEARS S 72° W, 27.6' (1984) A 5/8" IRON ROD WITH YPC "HIBBS LS 52989" BEARS S 88° W, 204.2' A 5/8" IRON ROD WITH YPC "HIBBS LS 52989" BEARS N 68° E, 218.9' NOTE: HIBBS SET CORNERS DURING A SURVEY THAT HAS NOT YET BEEN RECORDED (SET CHAINING NAIL AT SIDE CENTER, BT SIGNS ON FRONT AND REAR, PAINTED RED BAND FOR EXISTING BT'S, AND SET POSTS WITH BT SIGNS AT 5/8" IRON RODS)

ESTABLISHED THE FOLLOWING: A FIR 16" DIA., BEARS N 82° W, 92.3' MKD: 1/4 S8 BT A FIR 10" DIA., BEARS N 18° W, 101.8' MKD: 1/4 S8 BT (SET CHAINING NAIL AT SIDE CENTER, NAIL AND WASHER STAMPED "PLS 2830" AT BASE OF BLAZE, BT SIGNS ON FRONT AND BACK AND PAINTED RED BAND FOR NEW BT'S)

108—FOUND MONUMENT

CORNER E-10, (GCDB 320600) W 1/16 CORNER OF SECTIONS 4 & 9 T. 28 S., R. 7 W., W.M.

OCTOBER 1974 HERBERT L. NORTHCRAFT (MAP FILE M54-54) SET A 5/8"x30" IRON ROD FROM WHICH: A FIR 12" DIA., BEARS S 53° W, 4' A CEDAR 13" DIA., BEARS S 53-1/2° W, 13' A CEDAR 10" DIA., BEARS N 44° W, 29'

NOVEMBER 1974 HERBERT L. NORTHCRAFT (MAP FILE M54-55) SET A 5/8"x30" IRON ROD FROM WHICH: A FIR 12" DIA., BEARS S 53-1/2° W, 4' A CEDAR 10" DIA., BEARS S 53-1/2° W, 13' A CEDAR 10" DIA., BEARS N 44° W, 29'

DECEMBER 1974 GLENN BAUGHMAN (MAP FILE M55-1) FOUND 5/8" IRON ROD PER MAP FILE M54-55

APRIL 1983 - JANUARY 1984 BLM RESURVEY BY BISHOP AND ROGERS UNDER GROUP NO. 1124 (DCSO RECORDS VOLUME 46, PAGE 17750-51) THE W 1/16 SECTION CORNER OF SECTIONS 4 & 9, ESTABLISHED AND RECORDED BY HERBERT L. NORTHCRAFT, REGISTERED LAND SURVEYOR, NO. 750, IN 1974, AND ACCEPTED AS THE CORNER, MONUMENTED WITH AN IRON ROD, 5/8" DIA., PROJECTING 6" ABOVE GROUND, FROM WHICH THE BEARING TREES MKD. BY NORTHCRAFT: A FIR 14" DIA., BEARS S 53° W, 6 LKS. DIST. WITH HEALED BLAZE A CEDAR 8" DIA., BEARS S 53° W, 44 LKS. DIST. WITH HEALED BLAZE AT THE CORNER POINT, SET AN IRON POST, 28" LONG, 2-1/2" DIA., 22" IN THE GROUND, DIRECTLY ATOP THE IRON ROD, WITH BRASS CAP MKD: W 1/16 S4 S9 1983

MARCH 7, 2023 GARRETT FINCH AND CREW WITH MINISTER AND GLAESER SURVEYING FOUND 3" BRASS CAP, 0.4' ABOVE GROUND FROM WHICH: A 2" IRON PIPE LEANING NORTHEAST WITH 5/8" IRON ROD INSIDE, IN THE CENTER OF 7" WIDE CREEK BEARS N 77°58'43" W 15.86' (SURVEY COORDINATES) A FIR 22" DIA., BEARS S 52° W, 4.0' WITH HEALED BLAZE (1974) A CEDAR 10" DIA., BEARS N 42° W, 28.4' PARTIALLY HEALED BLAZE (1974) A CEDAR 8" DIA. (DEAD), BEARS S 50° W, 13.4' PARTIALLY HEALED BLAZE (1974) A CEDAR 10" DIA., BEARS S 08° W, 19.6' WITH HEALED DOUBLE BLAZE (NO RECORD) (SET CHAINING NAIL AT SIDE CENTER, BT SIGNS ON FRONT AND REAR, AND PAINTED RED BAND FOR EXISTING BT'S)

109—FOUND MONUMENT

CORNER J-9, (GCDB 300500) CORNER OF SECTIONS 8, 9, 16 & 17 T. 28 S., R. 7 W., W.M.

MAY 30, 1854 (ORIGINAL) NATHANIEL FORD UNDER CONTRACT NO. 44 (DCSO RECORD VOLUME 14, PAGE 5771) SET 1/4 SECTION POST, FROM WHICH: A B.OAK 7" DIA., BEARS S 63° E, 69 LKS. DIST. A LAUREL 15" DIA., BEARS N 55° E, 110 LKS. DIST. A LAUREL 18" DIA., BEARS N 35° W, 87 LKS. DIST. A B.OAK 18" DIA., BEARS S 60° W, 8 LKS. DIST.

109 CONT.

DECEMBER 2, 1966 DOUGLAS COUNTY SURVEYORS OFFICE JOHN M. POWELL AND CREW (C.S. FILE 52/79-1) FOUND GLO 1924 BRASS CAP, PROPERLY MARKED (SEE MENSCH SURVEY, GLO NOTES, VOLUME 14, PAGE 5892 FOR HIS RECORDED "TIE" TO THIS CORNER) ORIGINAL 7" B.OAK, NOW DOWN, BEARS S 63° E, 39.6' ORIGINAL 15" NOW 36" LAUREL, BEARS N 65° E, 72.6' (REC. N 63° E) ORIGINAL 18" NOW 32" LAUREL, BEARS N 35° W, 57.4' ORIGINAL 18" B.OAK, NOW DOWN, BEARS S 60° W, 5.3' 23" D.FIR BEARS S 44° E, 16.5' SHOWS GOOD SCAR (1924) 24" D.FIR BEARS S 82° W, 27.4' SHOWS GOOD SCAR (1924) 20" D.FIR BEARS N 39° W, 20.2' SHOWS GOOD SCAR (1924) 9" D.FIR BEARS N 51° E, 21.4' OPENED FOR SCRIBE "W S9", FACE ROTTEN, RING COUNT PLACES SCRIBE 1924 NEW BT: 16" D.FIR BEARS N 73° E, SCRIBED T28S R7W S9 CS BT (NO REC. DISTANCE) THIS CORNER ON OLD E-W FENCE LINE

DECEMBER 1996 WILLIAM C. STILES (C.S. FILE 55/32 AND M32-76) FOUND 2-1/2" BRASS CAP MKD: T28S R7W 8 9 16 17

FEBRUARY 1972 VIRGIL BROADWATER (MAP FILE M44-46) FOUND BRASS CAP JULY - AUGUST 1975 BLM RESURVEY BY JAMES E. JELLEY UNDER GROUP NO. 878 (DCSO RECORDS VOLUME 37, PAGE 15420) THE CORNER OF SECTIONS 8, 9, 16 & 17, REHABILITATED BY FRED MENSCH, CADASTRAL ENGINEER, IN 1924, AND NOT OF RECORD, MONUMENTED WITH AN IRON POST, 2" DIA., FIRMLY SET, PROJECTING 6" ABOVE GROUND WITH MARKED BRASS CAP MKD: T28S R7W S8 S9 S16 S17 1924 FROM WHICH THE REMAINS OF THE ORIGINAL BEARING TREES: A MADRONE 32" DIA., BEARS N 57-1/4° E, 100 LKS. DIST., NO MARKS VISIBLE ON DECAYED BLAZE (RECORD N 65° E, 110 LKS.) A ROOTHOLE BEARS S 60° W, 8 LKS. WITH A DOWN B.OAK ALONGSIDE, 36" DIA., NO MARKS VISIBLE A MADRONE 30" DIA., BEARS N 36-1/4° W, 87 LKS, NO MARKS VISIBLE ON DECAYED BLAZE (RECORD N 35° W) AND BEARING TREES MARKED BY MENSCH: A FIR 11" DIA., BEARS N 51° E, 32 LKS. WITH SCRIBE MARKS 7W S VISIBLE ON OPEN BLAZE A FIR 25" DIA., BEARS S 42° E, 24 LKS. WITH HEALED BLAZE A FIR 26" DIA., BEARS S 84° W, 42 LKS. WITH HEALED BLAZE A FIR 28" DIA., BEARS N 39-3/4° W, 31 LKS. WITH HEALED BLAZE AND A BEARING TREE OF WHICH I HAVE NO RECORD: A FIR 20" DIA., BEARS N 74° E, 37-1/2 LKS. DIST. WITH HEALED BLAZE (THIS IS PROBABLY DCSO BT FROM 1966, VL) ADD MARKS 1975 TO BRASS CAP

DECEMBER 1996 WILLIAM C. STILES (C.S. FILE 55/32 AND M32-76) FOUND 2-1/2" BRASS CAP MKD: T28S R7W 8 9 16 17

FEBRUARY 1972 VIRGIL BROADWATER (MAP FILE M44-46) FOUND BRASS CAP

JULY - AUGUST 1975 BLM RESURVEY BY JAMES E. JELLEY UNDER GROUP NO. 878 (DCSO RECORDS VOLUME 37, PAGE 15420) THE CORNER OF SECTIONS 8, 9, 16 & 17, REHABILITATED BY FRED MENSCH, CADASTRAL ENGINEER, IN 1924, AND NOT OF RECORD, MONUMENTED WITH AN IRON POST, 2" DIA., FIRMLY SET, PROJECTING 6" ABOVE GROUND WITH MARKED BRASS CAP MKD: T28S R7W S8 S9 S16 S17 1924 FROM WHICH THE REMAINS OF THE ORIGINAL BEARING TREES: A MADRONE 32" DIA., BEARS N 57-1/4° E, 100 LKS. DIST., NO MARKS VISIBLE ON DECAYED BLAZE (RECORD N 65° E, 110 LKS.) A ROOTHOLE BEARS S 60° W, 8 LKS. WITH A DOWN B.OAK ALONGSIDE, 36" DIA., NO MARKS VISIBLE A MADRONE 30" DIA., BEARS N 36-1/4° W, 87 LKS, NO MARKS VISIBLE ON DECAYED BLAZE (RECORD N 35° W) AND BEARING TREES MARKED BY MENSCH: A FIR 11" DIA., BEARS N 51° E, 32 LKS. WITH SCRIBE MARKS 7W S VISIBLE ON OPEN BLAZE A FIR 25" DIA., BEARS S 42° E, 24 LKS. WITH HEALED BLAZE A FIR 26" DIA., BEARS S 84° W, 42 LKS. WITH HEALED BLAZE A FIR 28" DIA., BEARS N 39-3/4° W, 31 LKS. WITH HEALED BLAZE AND A BEARING TREE OF WHICH I HAVE NO RECORD: A FIR 20" DIA., BEARS N 74° E, 37-1/2 LKS. DIST. WITH HEALED BLAZE (THIS IS PROBABLY DCSO BT FROM 1966, VL) ADD MARKS 1975 TO BRASS CAP

DECEMBER 2, 1978 VIRGIL L. BROADWATER (MAP FILE M74-50) BRASS DISK

APRIL 1983 - JANUARY 1984 BLM RESURVEY BY BISHOP AND ROGERS UNDER GROUP NO. 1124 (DCSO RECORDS VOLUME 46, PAGE 17750) THE CORNER OF SECTIONS 8, 9, 16 & 17, DETERMINED AT RECORD BEARING AND DISTANCE FROM THE REMAINING ORIGINAL BEARING TREE: A MADRONE 36" DIA., BEARS N 57-1/4° E, 100 LKS. DIST., NO MARKS VISIBLE ON PARTIALLY OPENED BLAZE AND THE REMAINS OF BEARING TREES MARKED BY MENSCH: A FIR, 8" DIA., BEARS N 51° E, 32 LKS. DIST. WITH HEALED SINGLE BLAZE A SAWED FIR STUMP 26" DIA., BEARS S 42° E, 24 LKS. DIST. WITH S16 VISIBLE ON CUT OPEN BLAZE A FIR 28" DIA., BEARS S 84° W, 42 LKS. DIST. WITH A HEALED BLAZE A FIR 24" DIA., BEARS N 39-1/4° W, 31 LKS. WITH HEALED FACE ANES RECORD: A FIR 20" DIA., BEARS N 74° E, 37-1/2 LKS. DIST. WITH HEALED BLAZE AT THE CORNER POINT, SET AN ALUMINUM POST, 28" LONG, 2-1/2" DIA., 24" IN THE GROUND, WITH ALUMINUM CAP MKD: T28S R7W S8 S9 S16 S17 1983 FROM WHICH A NEW BEARING TREE: A FIR 6" DIA., BEARS S 40-1/2° E, 241 LKS. DIST. MKD: T28S R7W S16 BT

JULY 1984 GLENN BAUGHMAN (RM 3-62)(C.S. FILE 58/144-12) FOUND 2-1/2" ALUMINUM PIPE WITH BLM ALUMINUM CAP FROM WHICH: A D.FIR 11" DIA., BEARS N 51° E, 21.4' WITH SCRIBE VISIBLE A D.FIR STUMP 29" DIA., BEARS S 42° E, 15.8' WITH SCRIBE VISIBLE A D.FIR 28" DIA., BEARS S 84° W, 27.7' WITH HEALED BLAZE A D.FIR 24" DIA., BEARS N 37° W, 20.4' WITH HEALED BLAZE A D.FIR 21" DIA., BEARS N 74° E, 24.2' WITH SCRIBE VISIBLE A D.FIR 6" DIA., BEARS S 40-1/2° E, 159.1' WITH SCRIBE VISIBLE

SEPTEMBER 1996 VIRGIL BROADWATER (MAP FILE M126-18) FOUND ALUMINUM CAP STAMPED: T28S R7W S8 S9 S16 S17 1983

MARCH 2, 2023 GARRETT FINCH AND CREW WITH MINISTER AND GLAESER SURVEYING FOUND 3-1/4" ALUMINUM CAP, 0.3' ABOVE GROUND FROM WHICH: A BARB WIRE FENCE CORNER RUNNING SOUTH & WEST BEARS NORTHEAST 2.2' A MADRONE 36" DIA., BEARS N 30° W, 56.6' PARTIAL HEALED BLAZE (1854) NOTE: BISHOP AND ROGERS IN 1984 FOUND A 36" MADRONE TO NORTHEAST, HOWEVER NO MADRONE TREES WERE FOUND TO NORTHEAST DURING THIS SURVEY. WE BELIEVE THE 36" MADRONE TREE FOUND THIS SURVEY TO BE ORIGINAL A STUMP 10" DIA. (3.5" HIGH), BEARS N 52° W, 22.0' WITH BT SIGN (1966) A STUMP 10" DIA. (3.5" HIGH), BEARS N 52° W, 22.0' WITH PARTIALLY HEALED BLAZE AND ROTTED SCRIBED MARKS VISIBLE (1924) A STUMP 18" DIA. (3.5" HIGH), BEARS N 73° E, 25.1' WITH BT SIGN (1966) NOTE: C.S. FILE 52/79-1, NO RECORD DISTANCE TO N 73° E BEARING TREE. EXISTING SIGN ON 18" STUMP MKD: S 73° W 25.1' 12-2-66 WE SET A CHAINING NAIL AT 25.1' TO MATCH ORIGINAL BT SIGN A ROTTED STUMP 32" DIA. (2" HIGH), BEARS S 42° E, 15.8' (1924) A STUMP 34" DIA., BEARS S 82° W, 27.4' WITH BT SIGN (1924) (SET CHAINING NAIL AT SIDE CENTER, BT SIGNS ON FRONT AND REAR, AND PAINTED RED BAND FOR EXISTING BT'S)

ESTABLISHED THE FOLLOWING: A FIR 7" DIA., BEARS N 32° E, 17.4

112-FOUND MONUMENT

CORNER J-11, (GCDB 340500) 1/4 CORNER OF SECTIONS 9 & 16 T. 28 S., R. 7 W., W.M.

MAY 30, 1854 (ORIGINAL) NATHANIEL FORD UNDER CONTRACT NO. 44 (DCSO RECORD VOLUME 14, PAGE 5772) SET 1/4 SECTION POST AT AVERAGE DISTANCE, FROM WHICH: A W.OAK 15" DIA., BEARS N 80° E, 125 LKS. A W.OAK 30" DIA., BEARS S 10° E, 37 LKS.

JULY - AUGUST 1975 BLM RESURVEY BY JAMES E. JELLEY UNDER GROUP NO. 878 (DCSO RECORDS VOLUME 37, PAGES 15419-20) POINT FOR THE 1/4 SECTION CORNER OF SECTION 9 & 16, AT PROPORTIONATE DISTANCE; THERE IS NO REMAINING EVIDENCE OF THE ORIGINAL CORNER SET AN IRON POST, 28" LONG, 2-1/2" DIA., 24" IN THE GROUND, WITH BRASS CAP MKD: 1/4 S9 S16 T28S R7W 1975 FROM WHICH: A FIR 17" DIA., BEARS N 77-1/2° E, 38 LKS. MKD: 1/4 S9 BT A FIR 6" DIA., BEARS S 36° E, 51 LKS. MKD: 1/4 S16 BT

APRIL 1983 - JANUARY 1984 BLM RESURVEY BY BISHOP & ROGERS UNDER GROUP NO. 1124 (DCSO RECORDS VOLUME 46, PAGE 17759) POINT FOR THE 1/4 CORNER OF SECTIONS 9 & 16, MONUMENTED WITH AN IRON POST, 2-1/2" DIA., FIRMLY SET, PROJECTING 6" ABOVE GROUND, WITH BRASS CAP MKD: T28S R7W 1/4 S9 S16 1975 FROM WHICH BEARING TREES MKD BY JELLEY: A FIR 18" DIA., BEARS N 60-3/4° E, 38 LKS. DIST. WITH HEALED BLAZE (RECORD N 77-1/2° E) A FIR 8" DIA., BEARS S 36° E, 51 LKS. DIST. WITH HEALED BLAZE

JUNE 1984 GLENN BAUGHMAN, L.S. #536 FOR GLIDE LUMBER PRODUCTS (C.S. FILE 58/144; RM 3-62) FOUND: 2-1/2" IRON PIPE WITH BRASS CAP FROM WHICH: A 20" D.FIR BEARS N 64° E, 24.4' (RECORD N 77-1/2° E, 25.1') AN 8" D.FIR BEARS S 36° E, 33.4' SET IRON ROD BEARS N 73°46'16" E, 4.52' FROM FOUND BRASS CAP A 20" D.FIR BEARS N 58° E, 20.1' WITH HEALED BLAZE (1975) AN 8" D.FIR BEARS S 30-1/2° E, 32.1' WITH HEALED BLAZE (SAME BT'S WERE USED FOR BOTH THE IRON PIPE AND IRON ROD)

NOVEMBER 1988 HOWARD W. JOHNSTONE, L.S. #498 (MAP FILE M101-45) FOUND 5/8" IRON ROD WITH PLASTIC CAP MKD: BAUGHMAN TECH. SERV. FROM WHICH: A FIR 20" DIA., BEARS N 58° E, 20.1' HEALED A FIR 8" DIA., BEARS S 30-1/2° E, 32.1' HEALED THE 1975 CAD. BCIP BEARS S 73°38'15" W, 4.48'

MARCH 9, 2023 GARRETT FINCH AND CREW WITH MINISTER AND GLAESER SURVEYING FOUND 3-1/4" BRASS CAP, 0.7" ABOVE GROUND FROM WHICH: A 5/8" IRON ROD BEARS N 74°37'25" E, 4.48' (SURVEY COORDINATES) A FIR 24" DIA., BEARS N 60° E, 24.5' WITH HEALED BLAZE AND BT SIGN (1975) A STUMP 12" DIA. (7" HIGH), BEARS S 40° E, 33.6' WITH HEALED BLAZE (1975) (SET CHAINING NAIL AT SIDE CENTER, BT SIGNS ON FRONT AND REAR, AND PAINTED RED BAND FOR EXISTING BT'S)

ESTABLISHED THE FOLLOWING: A FIR 10" DIA., BEARS S 52° E, 21.7' MKD: 1/4 S16 BT (SET CHAINING NAIL AT SIDE CENTER, NAIL AND WASHER STAMPED "PLS 2830" AT BASE OF BLAZE, BT SIGNS ON FRONT AND BACK AND PAINTED RED BAND FOR NEW BT)

113-FOUND MONUMENT

CORNER H-11, (GCDB 340520) CENTER S 1/16 CORNER OF SECTIONS 9 T. 28 S., R. 7 W., W.M.

APRIL 1983 - JANUARY 1984 BLM RESURVEY BY BISHOP & ROGERS UNDER GROUP NO. 1124 (DCSO RECORDS VOLUME 46, PAGE 17756) POINT FOR THE CENTER S 1/16 SECTION CORNER OF SECTION 9 SET AN ALUMINUM POST, 28" LONG, 2-1/2" DIA., 24" IN THE GROUND, WITH ALUMINUM CAP MKD: S 1/16 C-C S9 1983 FROM WHICH: A W.FIR 8" DIA., BEARS N 10-3/4° E, 17 LKS. DIST. MKD: CS 1/16 S9 BT A FIR 12" DIA., BEARS S 76-1/2° W, 14 LKS. DIST. MKD: CS 1/16 S9 BT

DECEMBER 1996 VIRGIL L. BROADWATER (MAP FILE M126-18) FOUND ALUMINUM CAP MKD: T28S R7W WM C-C S 1/16 S9 1983

MARCH 8, 2023 GARRETT FINCH AND CREW WITH MINISTER AND GLAESER SURVEYING FOUND 3-1/4" ALUMINUM CAP, 0.5" ABOVE GROUND FROM WHICH: A FIR 16" DIA., BEARS N 12° E, 11.6' WITH HEALED DOUBLE BLAZE (1983) A FIR 14" DIA. (DEAD), BEARS S 76° W, 8.4' WITH HEALED DOUBLE BLAZE (1983) (SET CHAINING NAIL AT SIDE CENTER, BT SIGNS ON FRONT AND REAR, AND PAINTED RED BAND FOR EXISTING BT'S)

ESTABLISHED THE FOLLOWING: A FIR 16" DIA., BEARS S 54° W, 32.6' MKD: CS 1/16 S9 BT (SET CHAINING NAIL AT SIDE CENTER, NAIL AND WASHER STAMPED "PLS 2830" AT BASE OF BLAZE, BT SIGNS ON FRONT AND BACK AND PAINTED RED BAND FOR NEW BT)

114-FOUND MONUMENT

CORNER F-12, (GCDB 360560) NE 1/16 CORNER OF SECTION 9 T. 28 S., R. 7 W., W.M.

APRIL 1983 - JANUARY 1984 BLM SUBDIVISION OF SECTION BY BISHOP & ROGERS UNDER GROUP NO. 1124 (DCSO RECORDS VOLUME 46, PAGE 17759) POINT FOR THE NE 1/16 SECTION CORNER OF SECTION 9, SET AN IRON POST 28" LONG, 2-1/2" DIA., 24" IN THE GROUND, WITH BRASS CAP MKD: NE 1/16 S9 1983 FROM WHICH: A FIR 7" DIA., BEARS S 68-1/4° E, 21-1/2 LKS. DIST. MKD: NE 1/16 S9 BT A FIR 10" DIA., BEARS N 18-1/4° W, 16-1/2 LKS. DIST. MKD: NE 1/16 S9 BT FROM THIS POINT A FENCE CORNER BEARS S 45° W, 1.55 CHAINS DIST., WITH FENCING EXTENDING N 02° W AND N 84° W

FEBRUARY 13, 2018 GREGORY D. LANG (PARTITION PLAT 2018-0004) FOUND BRASS CAP AT THE NE 1/16TH CORNER SECTION 9

114 CONT.

MARCH 7, 2023 GARRETT FINCH AND CREW WITH MINISTER AND GLAESER SURVEYING FOUND 3" BRASS CAP, 0.6" ABOVE GROUND FROM WHICH: A STUMP 24" DIA. (2" HIGH), BEARS N 14° W, 10.4' (1983) A FIR 16" DIA., BEARS S 68° E, 13.9' WITH HEALED DOUBLE BLAZE (1983) (SET CHAINING NAIL AT SIDE CENTER, BT SIGNS ON FRONT AND REAR, AND PAINTED RED BAND FOR EXISTING BT'S)

ESTABLISHED THE FOLLOWING: A FIR 24" DIA., BEARS S 70° W, 17.3' MKD: NE 1/16 S9 BT (SET CHAINING NAIL AT SIDE CENTER, NAIL AND WASHER STAMPED "PLS 2830" AT BASE OF BLAZE, BT SIGNS ON FRONT AND BACK AND PAINTED RED BAND FOR NEW BT)

115-FOUND MONUMENT

CORNER F-11, (GCDB 340560) CENTER N 1/16 CORNER OF SECTION 9 T. 28 S., R. 7 W., W.M.

APRIL 1983 - JANUARY 1984 BLM SUBDIVISION OF SECTION BY BISHOP & ROGERS UNDER GROUP NO. 1124 (DCSO RECORDS VOLUME 46, PAGE 17757) POINT FOR THE CENTER N 1/16 SECTION CORNER OF SECTION 9, SET AN IRON POST, 28" LONG, 2-1/2" DIA., 24" IN THE GROUND, WITH BRASS CAP MKD: N 1/16 C-C S9 1983 FROM WHICH: A FIR 15" DIA., BEARS N 56-1/4° E, 77 LKS. DIST. MKD: CN 1/16 S9 BT A W.OAK 8" DIA., BEARS N 83-1/2° W, 189 LKS. DIST. MKD: CN 1/16 S9 BT FROM THIS POINT A FENCE BEARS S 20-1/2° E, 156 LKS. WITH FENCES EXTENDING N, S, E, & W

MARCH 22, 1984 BRUCE A. SHANER (MAP FILE M96-19) FOUND BLM BRASS CAP FOR THE CN 1/16 CORNER SECTION 9

FEBRUARY 13, 2018 GREGORY D. LANG (PARTITION PLAT 2018-0004) FOUND BRASS CAP AT THE CN 1/16 CORNER SECTION 9 RECORD TIE TO FENCE CORNER PER BLM S 20°30'00" E 102.96'

JULY 26, 2000 GREGORY D. LANG (MAP FILE M135-25) FOUND BRASS CAP FOR AT THE CN 1/16 CORNER OF SECTION 9 FROM WHICH: A FIR 25-1/2" DIA., BEARS N 56-1/4° E, 50.82' AN ASH 17" DIA., BEARS N 83-1/2° W, 124.74'

AUGUST 27, 2019 GREGORY D. LANG (MAP FILE M175-77) FOUND BRASS CAP AT THE CN 1/16 CORNER OF SECTION 9

FEBRUARY 2, 2023 F. NEIL HIBBS (MAP FILE M178-61) FOUND BRASS CAP AND BT'S OF RECORD AT THE CN 1/16 CORNER OF SECTION 9

MARCH 21, 2023 GARRETT FINCH AND CREW WITH MINISTER AND GLAESER SURVEYING FOUND 3-1/4" BRASS CAP, 0.4" ABOVE GROUND FROM WHICH: AN EAST/WEST WIRE FENCE BEARS SOUTH 95.8' A NORTH/SOUTH WIRE FENCE BEARS EAST 34.5' AN OAK 20" DIA., BEARS N 79° W, 125.1' WITH HEALED BLAZE (1983) (NO PAINT, NAILS OR SIGNS ADDED TO TREE PER LANDOWNER REQUEST)

ESTABLISHED THE FOLLOWING: A FIR 18" DIA., BEARS S 52° E, 124.8' MKD: CN 1/16 S9 BT (SET CHAINING NAIL AT SIDE CENTER, NAIL AND WASHER STAMPED "PLS 2830" AT BASE OF BLAZE, BT SIGNS ON FRONT AND BACK AND PAINTED RED BAND FOR NEW BT)

117-FOUND MONUMENT

CORNER G-12, (GCDB 360540) WC TO CENTER E 1/16 CORNER OF SECTION 9 T. 28 S., R. 7 W., W.M.

APRIL 1983 - JANUARY 1984 BLM SUBDIVISION OF SECTION BY BISHOP & ROGERS UNDER GROUP NO. 1124 (DCSO RECORDS VOLUME 46, PAGE 17758) POINT FOR THE CENTER E 1/16 SECTION CORNER OF SECTION 9 IS LOCATED ON A STEEP ROCK BLUFF, 35' HIGH, WHERE IT IS IMPRACTICABLE TO ESTABLISH A PERMANENT MONUMENT. POINT SELECTED FOR THE WITNESS CORNER TO THE CENTER E 1/16 SECTION CORNER OF SECTION 9, SET AN ALUMINUM POST, 28" LONG, 2-1/2" DIA., 24" IN THE GROUND, WITH ALUMINUM CAP MKD: WC E 1/16 C-C S9 1983 FROM WHICH: A MADRONE 10" DIA., BEARS N 34° E, 49 LKS. DIST. MKD: X BT A FIR 12" DIA., BEARS S 66-1/2° W, 19 LKS. DIST. MKD: X BT

MARCH 21, 2023 GARRETT FINCH AND CREW WITH MINISTER AND GLAESER SURVEYING FOUND 3-1/4" ALUMINUM CAP, 1.5" ABOVE GROUND WITH MOUND OF STONE FROM WHICH: A MADRONE 12" DIA., BEARS N 34° E, 32.7' WITH PARTIAL HEALED BLAZE WITH SCRIBING VISIBLE AND BT SIGN (1983) A ROOTHOLE BEARS S 60° W, 14.9' WITH 12" TRUNK ALONGSIDE AND BT SIGN (1983) (SET CHAINING NAIL AT SIDE CENTER, BT SIGNS ON FRONT AND REAR, AND PAINTED RED BAND FOR EXISTING BT'S)

ESTABLISHED THE FOLLOWING: A FIR 30" DIA., BEARS S 28° W, 56.1' MKD: X ON UPPER BLAZE AND MKD: BT ON LOWER BLAZE (SET CHAINING NAIL AT SIDE CENTER, NAIL AND WASHER STAMPED "PLS 2830" AT BASE OF BLAZE, BT SIGNS ON FRONT AND BACK AND PAINTED RED BAND FOR NEW BT)

118-FOUND MONUMENT

CORNER G-13, (GCDB 400540) 1/4 CORNER OF SECTIONS 9 & 10 T. 28 S., R. 7 W., W.M.

MAY 30, 1854 (ORIGINAL) NATHANIEL FORD UNDER CONTRACT NO. 44 (DCSO RECORD VOLUME 14, PAGES 5766-67) SET 1/4 SECTION POST, FROM WHICH: A B.OAK 6" DIA., BEARS S 40° E, 21 LKS. DIST. A B.OAK 12" DIA., BEARS N 80° W, 22 LKS. DIST.

MARCH 16, 1922 G.G. STEWART, DEPUTY COUNTY SURVEYOR, A.O. STRICKLAND, A. DYSERT & A. ERICKSON (VOLUME 3, PAGE 108) RENEW OLD BT, ONE STANDING AND ONE DOWN SET IRON PIPE, MARKED: A FIR 10" DIA., BEARS N 51° E, 22.0' A B.OAK 18" DIA., BEARS N 80° W, 14.5' (O.B.T.)

118 CONT.

MARCH 1961 DOUGLAS COUNTY SURVEYORS OFFICE JAMES BYRON, DEPUTY & MILO GODFREY & CLETE PUTNAM (C.S. FILE 49/50-37) FOUND BOTH BT'S AND 1/2" IRON PIPE AT CORNER. ALL AS RECORDED BY STEWART, 1922. THE B.OAK TO NW, NOW SNAG, SHOWS GOOD SCRIBING BT THE FIR TO NE, NOW STUMP SET BRASS CAP AT CORNER MKD: COUNTY SURVEYORS OFFICE 1/4 S9 S10 T28S R7W 1961 NEW BT'S: AN 8" R.FIR BEARS S 68° E, 31.9' SCRIBED: 1/4 S10 CS BT A 15" R.FIR BEARS N 19° W, 5.7' SCRIBED: 1/4 S9 CS BT

SEPTEMBER 6, 1972 JAMES W. BYRON (MAP FILE M46-36) FOUND BRASS CAP

DECEMBER 2, 1978 VIRGIL L. BROADWATER (MAP FILE M74-50) BRASS DISK

APRIL 1983 - JANUARY 1984 BLM RESURVEY BY BISHOP & ROGERS UNDER GROUP NO. 1124 (DCSO RECORDS VOLUME 46, PAGES 17747-48) BEGINNING AT THE 1/4 SECTION CORNER OF SECTIONS 9 & 10, PERPETUATED AND RECORDED BY G.G. STEWART, DEPUTY DOUGLAS COUNTY SURVEYOR, IN 1922, FROM ORIGINAL EVIDENCE NO LONGER IN EXISTENCE, AND FURTHER PERPETUATED AND RECORDED BY JAMES W. BYRON, DEPUTY DOUGLAS COUNTY SURVEYOR, IN 1961. MONUMENTED WITH AN IRON POST, 1-1/2" DIA., FIRMLY SET, PROJECTING 12" ABOVE THE GROUND, WITH BRASS CAP MKD: COUNTY SURVEYORS OFFICE T28S 1/4 S9 S10 R7W 1961 FROM WHICH THE REMAINS OF THE BEARING TREES MARKED BY BYRON: A FIR 14" DIA., BEARS S 68° E, 49 LKS. DIST. WITH HEALED BLAZE A FIR STUMP 17" DIA., BEARS N 20° W, 8 LKS. DIST. WITH HEALED BLAZE AND A NEW BEARING TREE: A FIR 17" DIA., BEARS S 56-3/4° W, 23 LKS. DIST. MKD: 1/4 S9 BT

MARCH 31, 1993 MAURICE E. FARR (MAP FILE M118-67) FOUND BRASS CAP

MARCH 9, 2023 GARRETT FINCH AND CREW WITH MINISTER AND GLAESER SURVEYING FOUND 2-1/2" BRASS CAP, 1.2" ABOVE GROUND FROM WHICH: A ROOTHOLE BEARS N 72° E, 18' WITH 22" DIA., OAK TRUNK ALONGSIDE AND BT SIGN FROM 2002 (NO RECORD) A FIR 24" DIA., BEARS S 62° W, 14.8' WITH HEALED BLAZE AND BT SIGN (1983) A FIR STUMP 16" DIA. (7" HIGH), BEARS N 14° W, 5.5' WITH PARTIALLY HEALED BLAZE (1961) A FIR STUMP 14" DIA., ROTTED, BEARS S 72° E, 32.0' (1983) (SET CHAINING NAIL AT SIDE CENTER, BT SIGNS ON FRONT AND REAR, AND PAINTED RED BAND FOR EXISTING BT'S)

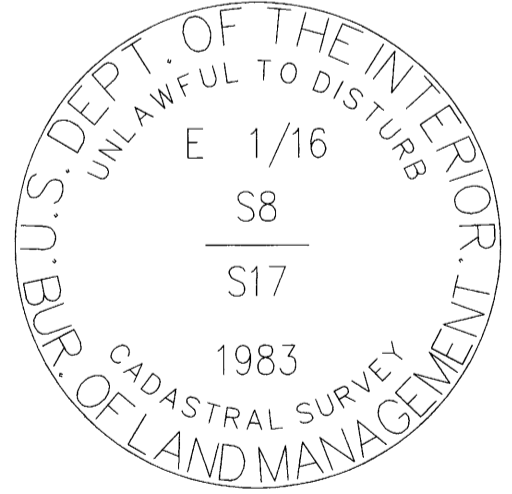
ESTABLISHED THE FOLLOWING: A FIR 12" DIA., BEARS N 22° E, 22.1' MKD: 1/4 S10 BT (SET CHAINING NAIL AT SIDE CENTER, NAIL AND WASHER STAMPED "PLS 2830" AT BASE OF BLAZE, BT SIGNS ON FRONT AND BACK AND PAINTED RED BAND FOR NEW BT)

119-FOUND MONUMENT

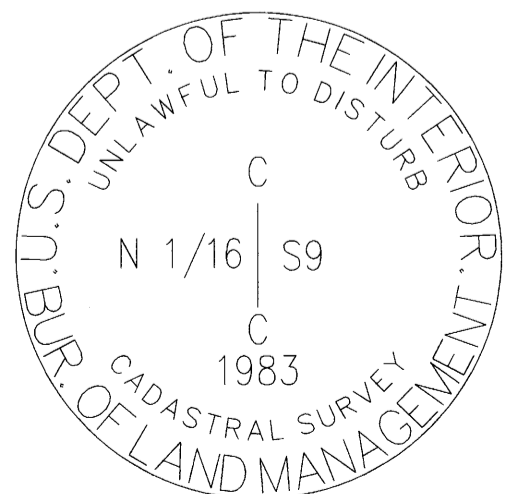
CORNER G-11, (GCDB 340540) CENTER 1/4 CORNER OF SECTION 9 T. 28 S., R. 7 W., W.M.

APRIL 1983 - JANUARY 1984 BLM SUBDIVISION OF SECTION BY BISHOP & ROGERS UNDER GROUP NO. 1124 (DCSO VOLUME 46, PAGES 17756-57) POINT FOR THE CENTER 1/4 CORNER OF SECTION 9, AT INTERSECTION WITH THE EAST AND WEST CENTERLINE, SET AN IRON POST, 28" LONG, 2-1/2" DIA., 24" IN THE GROUND, WITH BRASS CAP MKD: T28S R7W C 1/4 S9 1983 FROM WHICH: A CEDAR 8" DIA., BEARS N 8° E, 11 LKS. MKD: C 1/4 S9 BT A FIR 10" DIA., BEARS S 12° E, 19 LKS. MKD: C 1/4 S9 BT

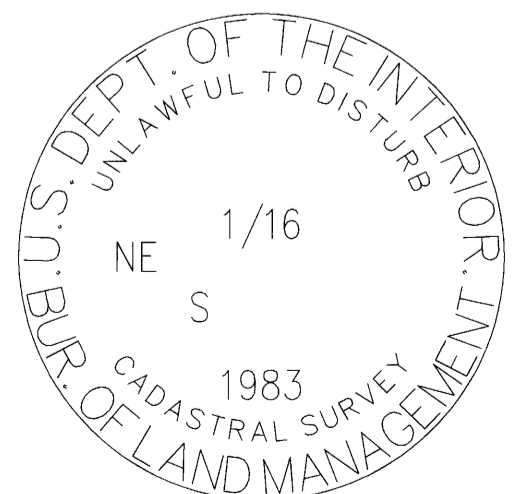
MARCH 7, 2023 GARRETT FINCH AND CREW WITH MINISTER AND GLAESER SURVEYING FOUND 3" BRASS CAP, 0.5" ABOVE GROUND FROM WHICH: A FIR 16" DIA., BEARS S 24° E, 12.7' WITH HEALED BLAZE AND BT SIGN (1983) A CEDAR 12" DIA., BEARS N 15° E, 7.4' WITH PARTIALLY HEALED BLAZE (1983) (SET CHAINING NAIL AT SIDE CENTER, BT SIGNS ON FRONT AND REAR, AND PAINTED RED BAND FOR EXISTING BT'S)



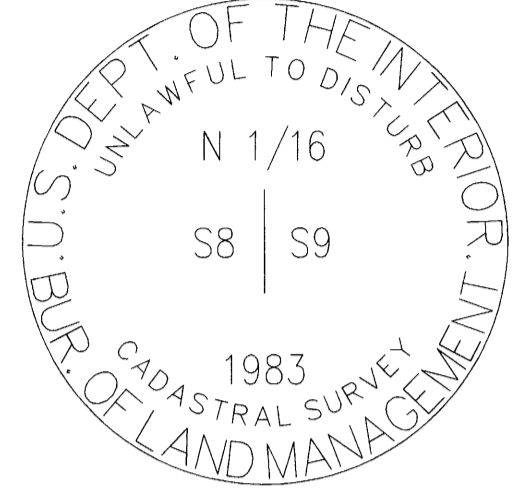
POINT NUMBER: 110



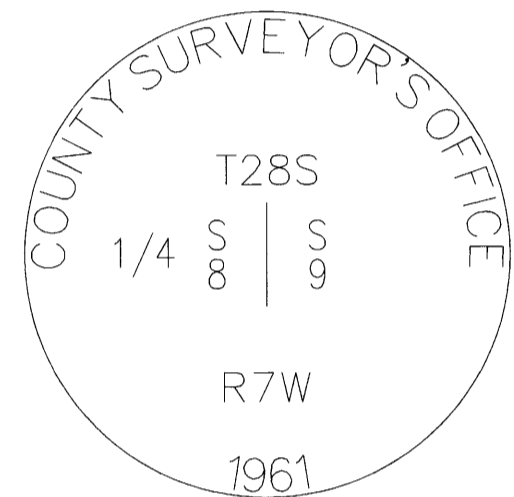
POINT NUMBER: 115



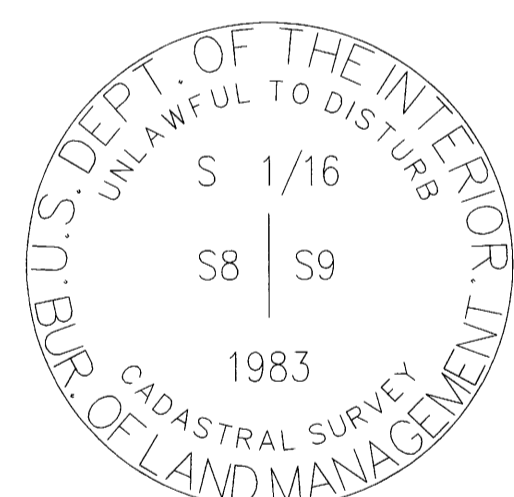
POINT NUMBER: 114



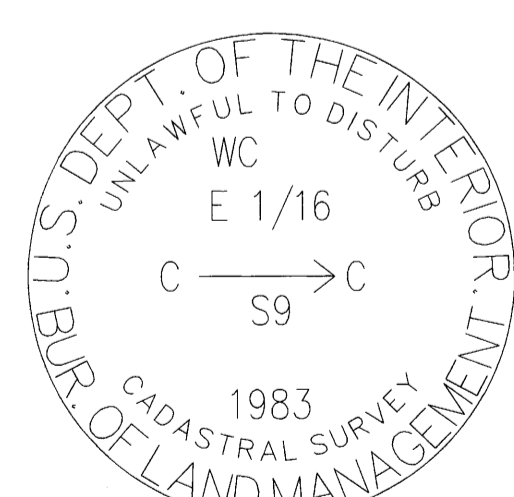
POINT NUMBER: 100



POINT NUMBER: 104



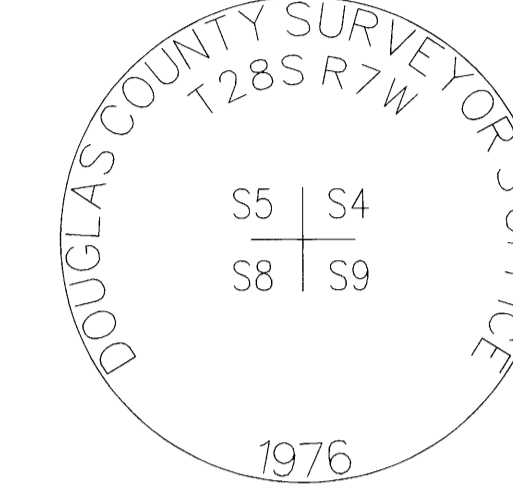
POINT NUMBER: 111



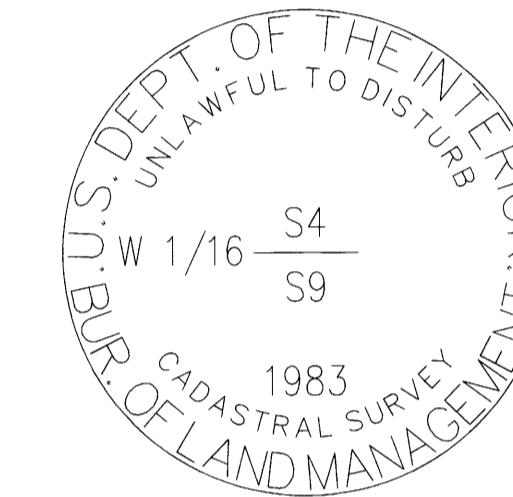
POINT NUMBER: 117

RECORD OF SURVEY

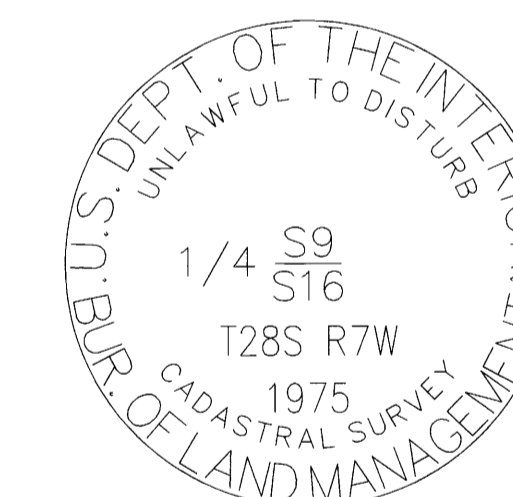
LOCATED IN A PORTION OF THE SE 1/4 OF THE SE 1/4 OF SECTION 8 THE NW 1/4, NE 1/4, SW 1/4 OF SECTION 9 T. 28 S., R. 7 W., W.M. PETTY LARSONY-TASK E DOUGLAS COUNTY, OREGON CONTRACT NO. 1204T020D0010 TASK ORDER NO. 140L4322F0063



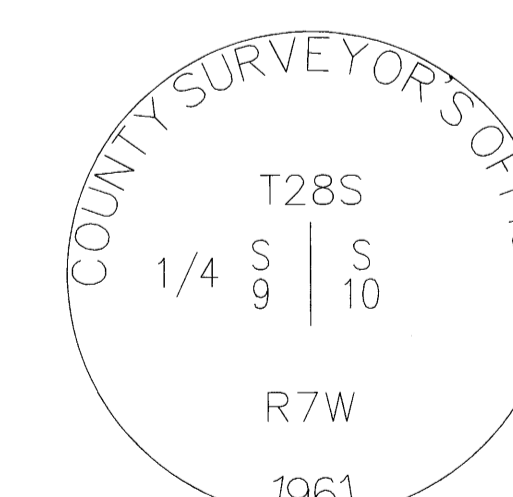
POINT NUMBER: 101



POINT NUMBER: 108



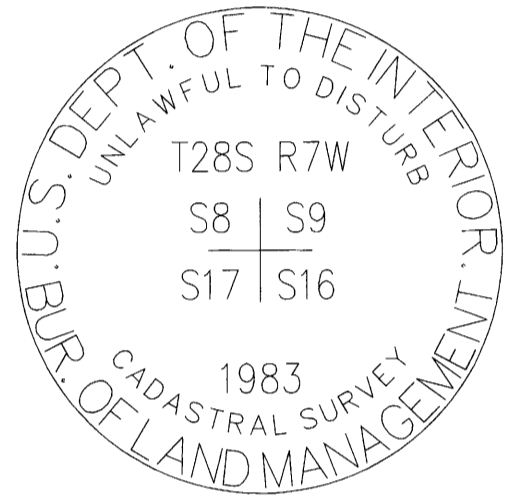
POINT NUMBER: 112



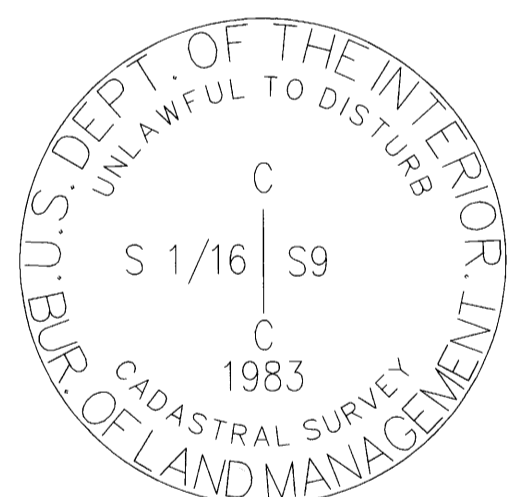
POINT NUMBER: 118



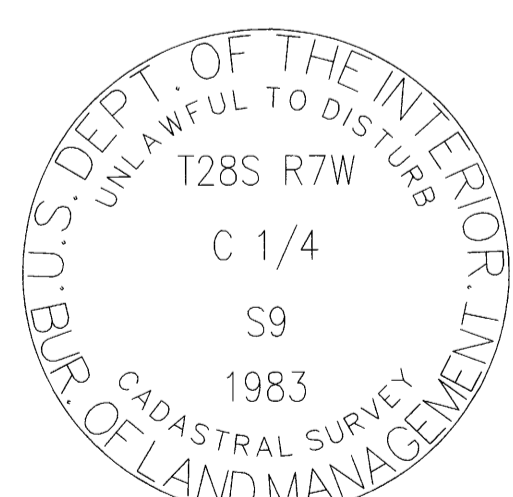
POINT NUMBER: 102



POINT NUMBER: 109



POINT NUMBER: 113



POINT NUMBER: 119

Scale: N/A, Job No. 22-319, Date: 2/26/2024, Calc By: DAR, Drawn By: RDH, Checked By: DAR, Sheet 4 of 4. Includes logo for Minister-Glaeser Surveying Inc., 2200 E. Evergreen Blvd., Vancouver, WA 98661, (360) 694-3313.

Filed 3-5-2024 by 81. This survey consists of: M185-3 AD. Narrative: Corner RPT: Douglas County Surveyor.