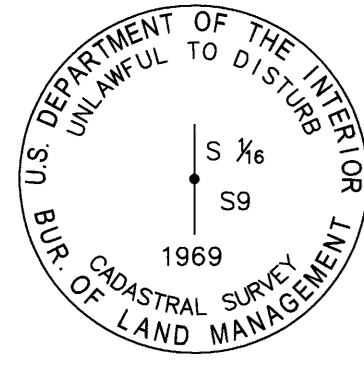


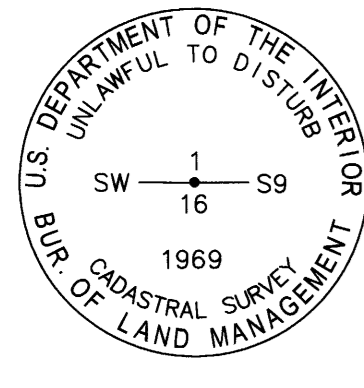
T. 29 S., R. 4 W.



(H-9) (300520)

PREVIOUS RENEWALS/SURVEYS, ETC.: (1969) - DCSO VOL. 39, PG. 15888

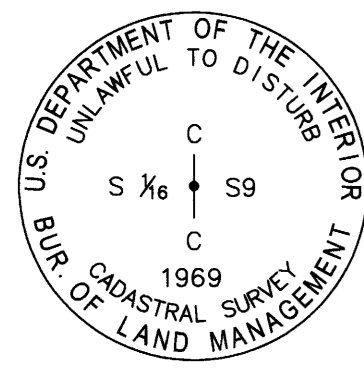
SCOTT TOLDNESS, PLS 90216, 2024 FOUND: (PER 1969) A 3/4" BLM BRASS CAP ON 2 1/2" DIAM. IRON POST, FROM WHICH: (PER 1969) A FIR, 16" DIAM., BEARS N45°E, 45.5 FT. (64 1/2 LKS.) DIST., WITH HEALED BLAZE, (PER 1969) A FIR, 18" DIAM., BEARS S80°E, 15.5 FT. (23 1/2 LKS.) DIST., WITH HEALED BLAZE. ADDED: PAINT, TAGS, NAILS AT RIGHT SIDE CENTER, AND LS WASHER 90216 TO BTs.



(H-10) (320520)

PREVIOUS RENEWALS/SURVEYS, ETC.: (1969) - DCSO VOL. 39, PG. 15905-15906

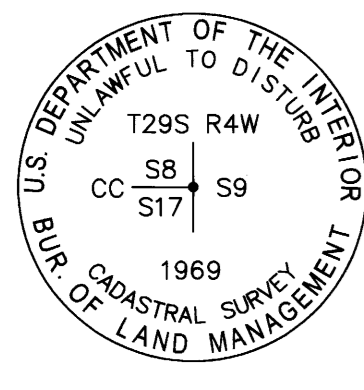
SCOTT TOLDNESS, PLS 90216, 2024 FOUND: (PER 1969) A 3/4" BLM BRASS CAP ON 2 1/2" DIAM. IRON POST, 0.6 FT. ABOVE GROUND, WITH 6" T-POST, N45°W, 0.3 FT., FROM WHICH: (PER 1969) A CEDAR, 29" DIAM., BEARS S61 1/4°E, 23.8 FT. (36 1/2 LKS.) DIST. TO A NAIL IN LEFT SIDE CENTER, WITH HEALED BLAZE, (PER 1969) A CEDAR, 14" DIAM., BEARS N37 3/4°W, 19.8 FT. (30 LKS.) DIST. TO A NAIL IN RIGHT SIDE CENTER, WITH HEALED BLAZE. ADDED: PAINT, SNOW BLAZE, NAILS (PER ABOVE LOCATIONS), TAGS & LS WASHER 90216 TO BTs.



(H-11) (340520)

PREVIOUS RENEWALS/SURVEYS, ETC.: (1969) - DCSO VOL. 39, PG. 15903

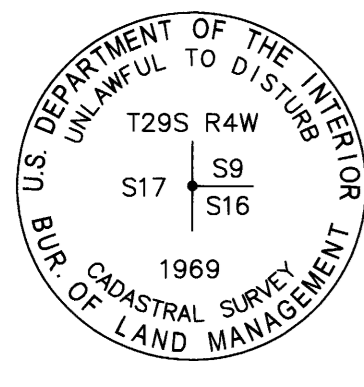
SCOTT TOLDNESS, PLS 90216, 2024 FOUND: (PER 1969) A 3/4" BLM BRASS CAP ON 2 1/2" DIAM. IRON POST, FLUSH WITH GROUND, WITH 6" T-POST, EAST, 3", FROM WHICH: (PER 1969) A FIR STUMP, 14" DIAM., BEARS S62°E, 5.9 FT. (9 LKS.) DIST., WITH HEALED BLAZE & TAG, (PER 1969) A ROTTED FIR STUMP, 19" DIAM., BEARS S89 1/2°W, 35.0 FT. (53 LKS.) DIST., VISIBLE SCRIBE. SET: A FIR, 16" DIAM., BEARS N59 1/4°E, 14.7 FT. DIST. TO A NAIL IN SOUTH SIDE CENTER, SCRIBED "C-S1/16S9BT," W/ LS WASHER 90216, A MADRONE, 16" DIAM., BEARS S5 1/2°W, 9.5 FT. DIST. TO A NAIL IN EAST SIDE CENTER, SCRIBED "C-S1/16S9BT," W/ LS WASHER 90216, A CEDAR, 21" DIAM., BEARS S83 1/2°W, 36.5 FT. DIST. TO A NAIL IN NORTH SIDE CENTER, SCRIBED "C-S1/16S9BT," W/ LS WASHER 90216.



(J-9) (300506) CC SECS. 8 & 17

PREVIOUS RENEWALS/SURVEYS, ETC.: (1899) - DCSO VOL. 15, PG. 6410 (1957) - DCSO C.S. FILE 42/298-1 (1963) - DCSO C.S. FILE 52/126-123 (1973) - DCSO C.S. FILE 59/30 (1977) - DCSO VOL. 39, PG. 15887 (1978) - DCSO C.S. FILE 59/46-57 (1986) - DCSO VOL. 48, PG. 18509-10 (2015) - DCSO M166-38 A-D

SCOTT TOLDNESS, PLS 90216, 2024 FOUND: (PER 1977) A 3/4" BLM BRASS CAP ON 2 1/2" DIAM. IRON POST, FLUSH WITH GROUND, WITH BENT 6" T-POST, EAST, 0.5 FT., FROM WHICH: (PER 1963) A FIR, 36" DIAM., BEARS S12 3/4°W, 46.2 FT. (70 LKS.) DIST. TO A NAIL IN RIGHT SIDE CENTER, WITH HEALED BLAZE & SNOW BLAZE, AND TAG, (PER 1899) A FIR, 38" DIAM., BEARS S29 1/4°W, 21.1 FT. (32 LKS.) DIST. TO A NAIL IN RIGHT SIDE CENTER, WITH HEALED BLAZE & SNOW BLAZE, AND TAG. (PER 1957) A FIR STUMP, 18" DIAM., BEARS N28 1/4°E, 52.8 FT. DIST. WITH TAG, SET: A FIR, 13" DIAM., BEARS N19°W, 17.05 FT. DIST. TO A NAIL IN RIGHT SIDE CENTER, SNOW BLAZED AND SCRIBED "T29SR4WS8BT." ADDED PAINT, NAILS (PER ABOVE LOCATIONS), NEW TAGS AND LS WASHER 90216 TO ALL BTs.

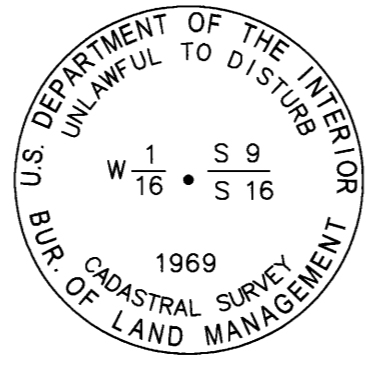


(J-9) (300500) CC SECS. 9 & 16

PREVIOUS RENEWALS/SURVEYS, ETC.: (1854) - DCSO VOL. 15, PG. 6377 (1881) - DCSO VOL. 15, PG. 6395-96 (1899) - DCSO VOL. 15, PG. 6409 (1925) - DCSO VOL. 3, PG. 229 (1950) - DCSO C.S. FILE 40/252 (1957) - DCSO C.S. FILE 42/298-2 (1963) - DCSO C.S. FILE 52/126-123 (1977) - DCSO VOL. 39, PG. 15886-87 (1978) - DCSO C.S. FILE 59/46-58 (1987-1988) - DCSO VOL. 48, PG. 18508-18509

SCOTT TOLDNESS, PLS 90216, 2024 FOUND: (PER 1977) A 3/4" BLM BRASS CAP ON A 2 1/2" DIAM. IRON POST, 0.6 FT. ABOVE GROUND, FROM WHICH: (PER 1978) A FIR, 15" DIAM., BEARS N36°E, 10.8 FT. DIST., WITH HEALED BLAZE AND BT TAG, (PER 1854) A MADRONE STUMP, 15 FT. TALL, BEARS S85°E, 16.5 FT. DIST., WITH HEALED BLAZE AND BT TAG, (PER 1925) A FIR, 24" DIAM., BEARS S43 1/4°E, 28.4 FT. DIST., WITH HEALED BLAZE, BT TAG, & K-TAG, (PER 1925) A FIR, 35" DIAM., BEARS S8 1/2°W, 23.2 FT. DIST., WITH HEALED BLAZE AND BT TAG, (PER 1957) A MADRONE, 30" DIAM., BEARS S14 3/4°W, 91.3 FT. DIST., WITH HEALED BLAZE, (PER 1978) AN IRON ROD, 5/8" DIAM., BEARS S23°E, 60.98 FT. DIST., ADDED: PAINT, NAILS AT SIDE CENTER, AND BT TAGS TO LIVING BTs.

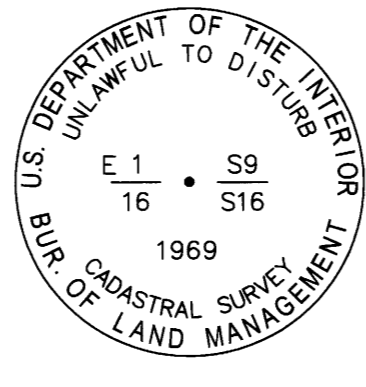
T. 29 S., R. 4 W.



(J-10) (320500)

PREVIOUS RENEWALS/SURVEYS, ETC.: (1925) - DCSO VOL. 3, PG. 229 (1938) - DCSO CS FILE 16/4 AND M3-67 (1969) - DCSO VOL. 39, PG. 15885-15886

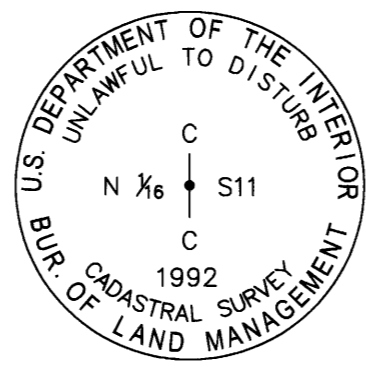
SCOTT TOLDNESS, PLS 90216, 2024 FOUND: (PER 1969) A 3/4" BLM BRASS CAP ON A 2 1/2" DIAM. IRON POST, 0.4 FT. ABOVE GROUND, WITH 6" T-POST, WEST, 0.3 FT., AND 6" U-POST, EAST, 1.0 FEET, FROM WHICH: (PER 1925) A FIR, 56" DIAM., BEARS S8 1/2°E (S13°E 1969), 36.3 FT. (55 LKS.) DIST. TO A NAIL IN LEFT SIDE CENTER, WITH HEALED BLAZE, SET: A CEDAR, 10" DIAM., BEARS N21 1/4°E, 40.0 FT. DIST. TO A NAIL IN RIGHT SIDE CENTER, SCRIBED "W1/16S9BT," A CEDAR, 9" DIAM., BEARS S85 1/4°E, 66.2 FT. DIST. TO A NAIL IN RIGHT SIDE CENTER, SCRIBED "W1/16S16BT." ADDED PAINT, SNOW BLAZE, NAILS (PER ABOVE LOCATIONS), TAGS, AND LS WASHER 90216 TO BTs.



(J-12) (360500)

PREVIOUS RENEWALS/SURVEYS, ETC.: (1938) - DCSO CS FILE 16/4 AND M3-67 (1969) - DCSO VOL. 39, PG. 15884

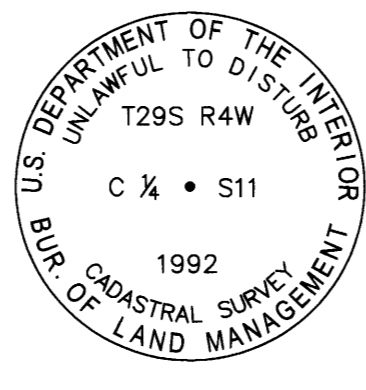
SCOTT TOLDNESS, PLS 90216, 2024 FOUND: (PER 1969) A 3/4" BLM BRASS CAP ON A 2 1/2" DIAM. IRON POST, 0.4 FT. ABOVE GROUND, AT A N. & E. FENCE INTERSECTION, WITH A 3/4" BLM BRASS POST BEARING WEST, 2 FT., FROM WHICH: (PER 1969) A FIR, 29" DIAM., BEARS N29°E, 38.2 FT. (SLOPE) DIST., WITH HEALED BLAZE & TAG BY OBC 8/29/69, (PER 1969) A FIR, 23" DIAM., BEARS SOUTH, 7.3 FT. DIST., WITH HEALED BLAZE & TAG BY OBC 8/29/69. PAINTED BANDS & BLAZES, ADDED NAILS AT SIDE CENTER, AND ADDED BLANK TAG ON REVERSE. ADDED POST NORTH, 5 FT., AND EAST 5 FT., WITH BOUNDARY SIGNS.



(F-19) (540500)

PREVIOUS RENEWALS/SURVEYS, ETC.: (1983) - DCSO M94-61 AND C.S. FILE 58/270 (1992) - DCSO VOL. 52, PG. 19814

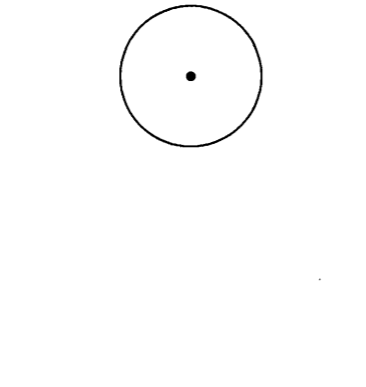
SCOTT TOLDNESS, PLS 90216, 2024 FOUND: (PER 1992) A 3/4" BLM BRASS CAP ON 2 1/2" DIAM. STAINLESS STEEL POST, FROM WHICH: (PER 1992) A FIR, 25" DIAM., BEARS N55 1/2°E, 25.1 FT. DIST., WITH HEALED BLAZE, (PER 1992) A FIR, 24" DIAM., BEARS S82°W, 17.2 FT. DIST., WITH HEALED BLAZE. (PER 1983) A BRASS CAP ON A 1 1/2" DIAM. IRON PIPE MARKED CN 1/16 S11 LS 866 1983, BEARS N85°W 3.65 FT.



(G-19) (540540)

PREVIOUS RENEWALS/SURVEYS, ETC.: (1983) - DCSO M94-61 AND C.S. FILE 58/270 (1992) - DCSO VOL. 52, PG. 19812-19813

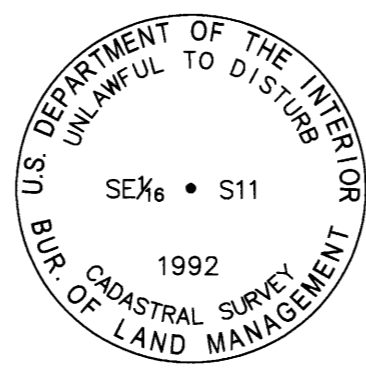
SCOTT TOLDNESS, PLS 90216, 2024 FOUND: (PER 1992) A 3/4" BLM BRASS CAP ON A 2 1/2" DIAM. STAINLESS STEEL POST, 14" BELOW SURFACE OF E. SHOULDER OF LOUIS CREEK RD, FROM WHICH: (PER 1992) A 3/4" BLM BRASS CAP ON A 2 1/2" DIAM. STAINLESS STEEL POST BEARS N45 1/2°E, 13.2 FT. (20 LKS.) DIST., MARKED RM C 1/4 S11 13.20 FT. AND ARROW POINTING TO THE CORNER, (PER 1992) A CEDAR, 23" DIAM., BEARS S81 1/2°E (FROM THE BLM MONUMENT), 50.8 FT. (77 LKS.) DIST., (PER 1983) AN IRON PIPE WITH A BRASS CAP MKD. T29S R4W C 1/4 WC LS866, BEARS S88°41'41"E (FROM THE BLM MONUMENT), 17.95' FT. (38 LKS.) DIST., (PER 1983) AN IRON PIPE WITH AN ILLEGIBLE BRASS CAP, BEARS N10°11'50"W (N1°E) (FROM THE BLM MONUMENT), 36.30 FT. (53 LKS.) DIST.



(H-19) (540520) C-S 1/2 SEC. 11

PREVIOUS RENEWALS/SURVEYS, ETC.: (1992) - DCSO VOL. 52, PG. 19812 (2011) - DCSO M157-41

SCOTT TOLDNESS, PLS 90216, 2024 FOUND: YELLOW PLASTIC CAP MARKED "LANDMARK PLS 2287" ON A 5/8" DIAM. IRON ROD, FROM WHICH: (PER 1992) A FIR STUMP BEARS S67°W, 340.9 FT. (517 LKS.) DIST., (PER 1992) A CEDAR, 36" DIAM., BEARS N68 1/2°W, 294.8 FT. (447 LKS.) DIST. (NO EVIDENCE OF BLM RM BRASS CAP S70°W, 80 LKS.) SET: AN ALUMINUM POST, 5.5 FT. LONG, BEARS S9°W, 2.0 FT. DIST. WITH LINE/BT TAG, A FIR, 12" DIAM., BEARS S88 1/2°E, 188.5 FT. DIST., SCRIBED "CS1/16S11BT" WITH TAG BY 90216.

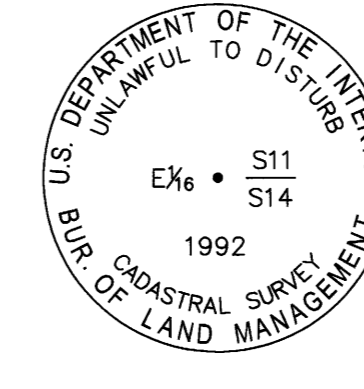


(H-20) (560520)

PREVIOUS RENEWALS/SURVEYS, ETC.: (1992) - DCSO VOL. 52, PG. 19817 (2011) - DCSO M157-41

SCOTT TOLDNESS, PLS 90216, 2024 FOUND: (PER 1992) A 3/4" BLM BRASS CAP ON 2 1/2" DIAM. STAINLESS STEEL POST, FROM WHICH: (PER 1992) A FIR, 19" DIAM., BEARS N17 1/4°E, 17.8 FT. (27 LKS.) DIST. (PER 1992) REMAINS OF A FIR BEAR S82°W, 27.39 FT. (41 1/2 LKS.) DIST. (PER 1992) A T-POST BEARS EAST, 0.2 FT. DIST. SET: A CEDAR, 17" DIAM., BEARS S7 1/4°E, 27.2 FT. DIST., SCRIBED "SE1/16S11BT," WITH TAG BY 90216 10/23/24.

T. 29 S., R. 4 W.



(J-20) (560500)

PREVIOUS RENEWALS/SURVEYS, ETC.: (1992) - DCSO VOL. 52, PG. 19783 (2007) - DCSO M154-15 (2011) - DCSO M157-41

SCOTT TOLDNESS, PLS 90216, 2024 FOUND: (PER 1992) A 3/4" BLM BRASS CAP ON 2 1/2" DIAM. STAINLESS STEEL POST, WITH T-POST ALONGSIDE, FROM WHICH: (PER 1992) A FIR, 20" DIAM., BEARS N23 1/2°W, 4.5 FT. (7 LKS.) DIST., (PER 1992) A FIR STUMP, 18" DIAM., BEARS S42°W, 15.2 FT. (23 LKS.) DIST. SET: A FIR, 6" DIAM., BEARS S30°W, 27.4 FT. DIST., SCRIBED "XBT."

SURVEYOR'S NARRATIVE

PROJECT SCOPE:

TO PROVIDE THE NECESSARY PROFESSIONAL LAND SURVEY SERVICES REQUIRED UNDER THE DEPARTMENT OF INTERIOR, BUREAU OF LAND MANAGEMENT (BLM) CONTRACT NO. 140L43240003, "FY2024 BOUNDARY LINE SURVEY RBDO". THE PROJECT INVOLVES MARKING AND POSTING A TOTAL OF 15.25 MILES OF BOUNDARY LINE AND THE MAINTENANCE OF 58 CORNERS. THIS PROJECT IS LOCATED IN THE BLM ROSEBURG DISTRICT, DOUGLAS COUNTY, OREGON.

THE SURVEY:

THE BLM PROVIDED CONTRACT SPECIFICATIONS. RESEARCH WAS COMPLETED ON THE BLM AND DOUGLAS COUNTY WEBSITES TO ASSURE RECORDS WERE UP TO DATE AND ACCURATE.

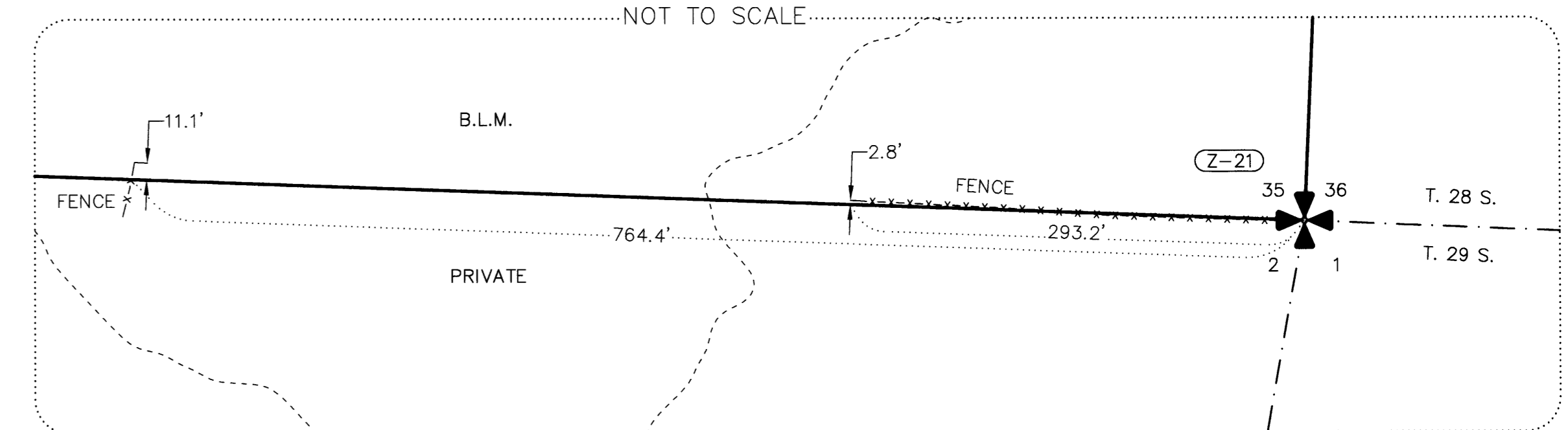
CORNERS WERE MAINTAINED TO THE STANDARDS SET BY THE 2009 B.L.M. MANUAL OF SURVEYING INSTRUCTIONS, OREGON REVISED STATUTES AND CONTRACT SPECIFICATIONS.

LINE WERE MARKED TO CONTRACT SPECIFICATIONS, WITH 5.5 FT. ALUMINUM POSTS OR LINE TREES WITH BLM BOUNDARY SIGNS ATTACHED, AT INTERVALS OF NO MORE THAN 200 FT.

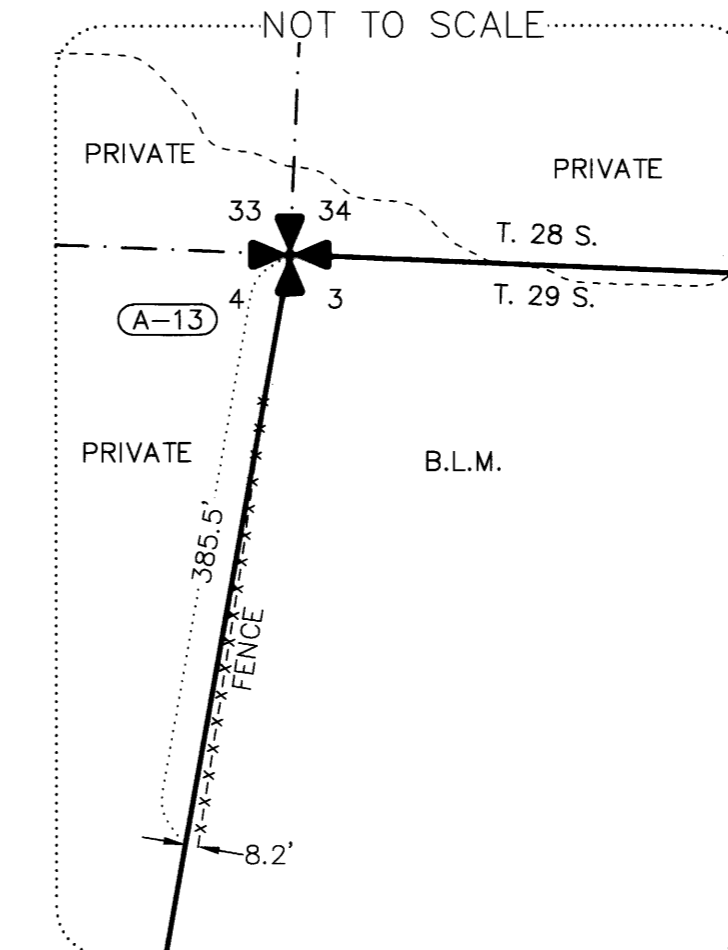
METHODS - EQUIPMENT:

- A. THE CONTROL SURVEY WAS BY GPS STATIC AND RTK OBSERVATIONS, PERFORMED USING TRIMBLE R10 & R12i GPS RECEIVERS AND DATA WAS PROCESSED USING NGS-OPUS AND TRIMBLE BUSINESS CENTER.
B. LAND CORNER TIES AND POSTING PERFORMED USING TRIMBLE R10 & R12i RECEIVERS AND R.T.K. DATA PROCESSED USING TRIMBLE BUSINESS CENTER SOFTWARE.
C. THE BASIS OF BEARING FOR THIS SURVEY IS ON THE TRUE MERIDIAN AS DETERMINED BY GLOBAL POSITIONING SYSTEM (GPS) CONTROL DERIVED FROM N.G.S. O.P.U.S. SOLUTIONS USING A REFERENCE FRAME OF NAD_83 (2011) (EPOCH: 2010.0000).
D. FIELD SURVEY COMMENCED JULY 2024 AND WAS COMPLETED JANUARY 2025.

DETAIL 'A'



DETAIL 'B'



LEGEND

- SECTIONAL CORNER, AS NOTED.
CORNER INDEX (TYP.)
FENCE LINE
APPROXIMATE CREEK CENTERLINE

FILED Date: 1-19-2025 By: M185-79A-P Narrative: Corner Rpt: DOUGLAS COUNTY SURVEYOR

REGISTERED PROFESSIONAL LAND SURVEYOR Scott L. Toldness MAY 20, 2015 SCOTT L. TOLDNESS 90216PLS EXPIRES: 06/30/2026

Professional surveyor information block including company name (GLAHE & ASSOCIATES), address (303 Church Street, Sandpoint, Idaho 83864), phone number (208-285-4474), and survey details (FY2024 BOUNDARY LINE SURVEY - RBDO, DRAWING: 24-033A BLM ROSEBURG ROS, Scale: N/A, Checked By: SLT, Drawn By: SWO, Plot Date: 2/13/2025, Sheet: 4 of 4).