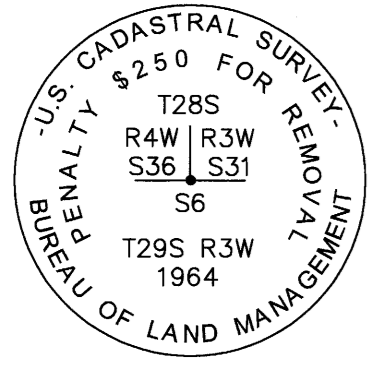


207-58114

T. 28 S., R. 3 W.



Z-1 (100100)

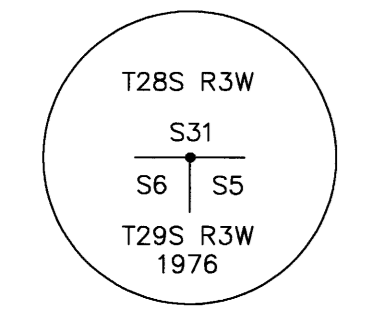
PREVIOUS RENEWALS/SURVEYS, ETC.:

- (1881) - DCSO VOL. 13, PG. 5615
(1964) - DCSO VOL. 33, PG. 13783-84
(1979) - DCSO VOL. 43, PG. 16878
(1989) - DCSO C.S. FILE 64/1-5
(2016) - DCSO C.S. FILE 65/94-2

SCOTT TOLDNESS, PLS 90216, 2024

FOUND: (PER 1964) A 3/4" BLM BRASS CAP ON A 2 1/2" DIAM. IRON POST, 0.6' ABOVE GROUND, FROM WHICH: (PER 1964) A FIR, 55" DIAM., BEARS N48"E, 56.8 FT. DIST. WITH HEALED BLAZE & BT TAG, (PER 1989) A CEDAR, 17" DIAM., BEARS N69 1/2"E, 45.0 FT. DIST. WITH HEALED BLAZE & TAG, (PER 1989) A FIR, 27" DIAM., BEARS N15 3/4"W, 52.5 FT. DIST WITH HEALED BLAZE & TAG. (PER 1979) A DEAD AND DOWN FIR, 11" DIAM., BEARS N70"W, 15.8 FT. DIST. PAINTED AND ADDED BLANK BT TAG TO BACKS OF BTs. REPLACED TAG ON BT AT N48"E WITH UPDATED DIST.

T. 29 S., R. 3 W.



A-5 (200700)

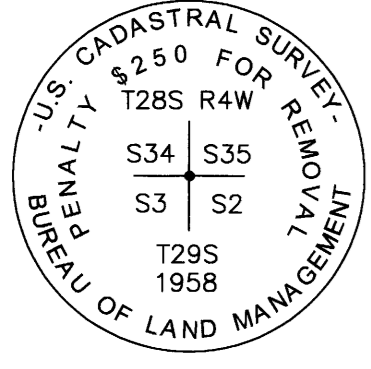
PREVIOUS RENEWALS/SURVEYS, ETC.:

- (1881) - DCSO VOL. 15, PG. 6327
(1908) - DCSO VOL. 13, PG. 5562
(1976) - DCSO M59-77
(1979) - DCSO VOL. 43, PG. 16877
(2006) - DCSO M150-50

SCOTT TOLDNESS, PLS 90216, 2024

FOUND: (PER 1976) BRASS CAP ON A 1 1/2" DIAM. IRON POST, 0.5" ABOVE GROUND, FROM WHICH: (PER 1979) A CEDAR, 14" DIAM., BEARS S70 1/4"E, 37.3 FT. DIST., WITH HEALED BLAZE & TAG, (PER 2006) A CEDAR, 8" DIAM., BEARS S37 1/2"W, 20.8 FT. DIST., WITH HEALED BLAZE & TAG.

T. 28 S., R. 4 W.



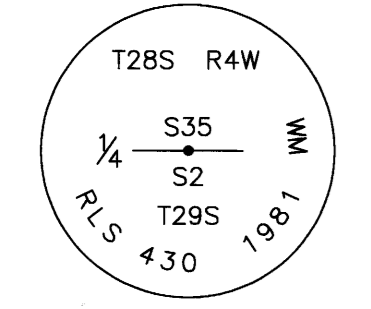
Z-17 (500100)

PREVIOUS RENEWALS/SURVEYS, ETC.:

- (1854) - DCSO VOL. 13, PG. 5607-5608
(1881) - DCSO VOL. 13, PG. 5614
(1958) - DCSO VOL. 29, PG. 12228
(1981) - DCSO ROLL RM 3-54
(2014) - DCSO VOL. 13, PG. 58, PG. 23194-5

SCOTT TOLDNESS, PLS 90216, 2024

FOUND: (PER 1957) A 3/4" BLM BRASS CAP ON A 2 1/2" DIAM. IRON POST, FLUSH W/ GROUND, FROM WHICH: (PER 1881) A FIR SNAG, 14" DIAM., BEARS S60"W, 27.7 FT. DIST. WITH OLD SCRIBE & BLAZE, (PER 1958) A FIR, 29" DIAM., BEARS N29 1/2"E, 7.9 FT. DIST. WITH HEALED BLAZE & K-TAG, (PER 1958) A CEDAR, 41" DIAM., BEARS S81 1/2"W (S80 1/2"W), 37.3 FT. DIST. WITH HEALED BLAZE & ILLEGIBLE BT TAG, (PER 1958) A FIR STUMP, 29" DIAM., BEARS N66 1/2"W, 42.9 FT. DIST. WITH ILLEGIBLE TAGS (PER 1981) A DEAD RED CEDAR, 15" DIAM., BEARS S26 1/2"E (S27"E), 52.0 FT. DIST. WITH HEALED BLAZE AND BT TAG, (PER 2014) A DEAD & DOWN FIR, 11" DIAM., BEARS N67 1/2"W, 13.4 FT. DIST. WITH SEMI-HEALED BLAZE AND BT TAG. SET: A FIR, 32" DIAM., BEARS S82 1/2"E, 6.9 FT. DIST. TO A NAIL IN LEFT SIDE CENTER, SCRIBED T29SR4WS2BT, WITH BT TAG, LS WASHER 90216, AND MAG NAIL AT BOTTOM OF SCRIBE, A FIR, 27 INS. DIAM., BEARS N87"W, 35.3 FT. DIST. TO A NAIL IN LEFT SIDE CENTER, SCRIBED T28SR4WS34BT, WITH BT TAG, LS WASHER 90216, AND MAG NAIL AT BOTTOM OF SCRIBE. PAINTED BTs AND ADDED DISTANCE TO EXISTING BTs.



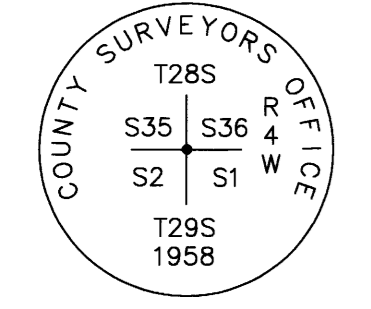
Z-19 (540100)

PREVIOUS RENEWALS/SURVEYS, ETC.:

- (1854) - DCSO VOL. 13, PG. 5608
(1881) - DCSO VOL. 13, PG. 5614
(1981) - DCSO RM 3-54
(2011) - DCSO M157-39

SCOTT TOLDNESS, PLS 90216, 2024

FOUND: (PER 1981) BRASS CAP BY RLS 430, ON A 2" DIAM. IRON PIPE, 0.6 FT. ABOVE GROUND, FROM WHICH: (PER 1981) A FIR, 16" DIAM., BEARS N45"E, 11.2 FT. DIST. TO A NAIL AT LEFT SIDE CENTER, WITH HEALED BLAZE AND BT TAG. (RECORD CALLS N45"E, 10.8 FT. DIST., BT TAG READS S45"W, 11.2 FT. DIST, MATCHING 1981/82 RECORD) (PER 1981) A FIR, 17" DIAM., BEARS S47 3/4"E (S49"E), 11.9 FT. DIST. WITH HEALED BLAZE AND K-TAG, A FIR, 31" DIAM., BEARS N28 1/2"W, 46.3 FT. DIST. TO A NAIL AT RIGHT SIDE CENTER, WITH HEALED BLAZE AND ILLEGIBLE K-TAG, (PER 1881) A ROTTED CEDAR STUMP, 39" DIAM., BEARS S9"W, 27.8 FT. DIST WITH BT TAG. A 2 1/2" DIAM. IRON PIPE (UNRECORDED), BEARS NORTHEAST, 1.4 FT. DIST. ADDED NEW BT TAGS & NAILS (PER ABOVE LOCATIONS) TO BTs.



Z-21 (600100)

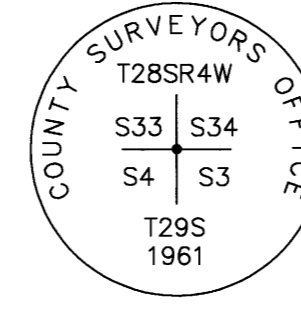
PREVIOUS RENEWALS/SURVEYS, ETC.:

- (1854) - DCSO VOL. 13, PG. 5608
(1881) - DCSO VOL. 13, PG. 5615
(1958) - DCSO C.S. FILE NO. 49/67-2
(1964) - DCSO VOL. 33, PG. 13784-85
(2006) - DCSO VOL. 56, PG 22315 & PLAT T29-4 2011-3
(2011) - DCSO M157-39
(2020) - DCSO M177-20

SCOTT TOLDNESS, PLS 90216, 2024

FOUND: (PER 1958) BRASS CAP ON A 1 1/2" DIAM. IRON POST, 1 FT. ABOVE GROUND, FROM WHICH: (PER 1958) A FIR, 45" DIAM., BEARS N4"W, 15.5 FT. DIST WITH HEALED BLAZE AND TAG (PER 1964) A FIR, 20" DIAM., BEARS N61 1/2"E, 64.7 FT. DIST. WITH HEALED BLAZE AND TAG, (PER 1958) A CEDAR, 26" DIAM, BEARS S2"E, 17.2 FT. DIST. WITH HEALED BLAZE AND TAG, (PER 2006) A FIR, 8" DIAM., BEARS S62 1/2"W, 28.0 FT. DIST. W/ HEALED BLAZE & TAG, (PER 1958) AN OLD ROTTED STUMP BEARS N65"E, 7.5 FT. DIST. WITH SEMI-VISIBLE SCRIBE AND ILLEGIBLE BT TAG, A DOWN ROTTED TREE BEARS APPROXIMATELY WEST, 5 FT. DIST., WITH ILLEGIBLE BT TAG.

T. 29 S., R. 4 W.



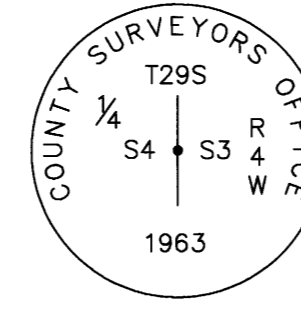
A-13 (400700)

PREVIOUS RENEWALS/SURVEYS, ETC.:

- (1854) - DCSO VOL. 13, PG. 5607
(1881) - DCSO VOL. 13, PG. 5613-14
(1922) - DCSO M2-4, VOL. 3, PG. 113
(1961) - DCSO C.S. FILE NO. 49/67-21
(1993) - DCSO M118-13
(1999) - DCSO M133-18 A & B
(2006) - DCSO 2007-0008
(2007) - DCSO M153-18

SCOTT TOLDNESS, PLS 90216, 2024

FOUND: (PER 1961) A 2 1/2" BRASS CAP ON A 1 1/2" DIAM. IRON PIPE, 1.0' ABOVE GROUND (A 3/4" DIAM. IRON PIPE, 1 FT. TALL ALONG THE N.E. SIDE LEANS N.E.), FROM WHICH: (PER 1961) A FIR, 19" DIAM., BEARS S85"E (S82 1/2"E), 24.4 FT. DIST. WITH HEALED BLAZE, (PER 1961) A FIR, 42" DIAM., BEARS S51 1/2"E, 30.2 FT. DIST. WITH HEALED BLAZE, TAG "CS 8/61," (PER 1922) A FIR STUMP, 48" DIAM., 4.5 FT. TALL, BEARS S68"W, 18.6 FT. (17.0 FT.) DIST. WITH HEALED BLAZE, TAG "CS 57," SET: A FIR, 7" DIAM., BEARS S44 1/2"W, 36.1 FT. DIST. TO A NAIL IN N.W. FACE, SCRIBED T29SR4WS4BT W/ LS WASHER BELOW, TAG "90216 7/25/24." A MAPLE, 11" DIAM., BEARS N9"E, 7.8 FT. DIST. TO A NAIL IN E. FACE, SCRIBED T28SR4WS34BT W/ LS WASHER BELOW & TAG "90216," A LAUREL, 4" DIAM., BEARS N90"W, 11.4 FT. DIST. TO AN LS WASHER IN N. FACE, SCRIBED "X" AT BREAST HEIGHT, AND TAG "90216." ADDED POST S10"W, 5 FT., & EAST, 5 FT., WITH BOUNDARY SIGNS.



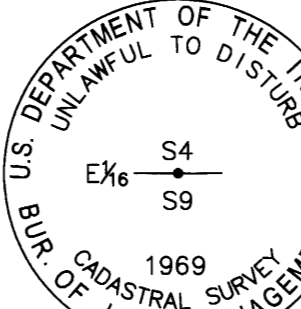
C-13 (400640)

PREVIOUS RENEWALS/SURVEYS, ETC.:

- (1881) - DCSO VOL. 15, PG. 6395
(1922) - DCSO M2-4, VOL. 3, PG. 115
(1963) - DCSO C.S. FILE 52/126-119
(1993) - DCSO M118-13
(2024) - DCSO M184-31

SCOTT TOLDNESS, PLS 90216, 2024

FOUND: (PER 1963) A 2 1/2" BRASS CAP ON A 1 1/2" DIAM. IRON PIPE, 0.9 FT. ABOVE GROUND, FROM WHICH: A STEEL POST BEARS S10"E, 2 FT. DIST., A FIR, 5" DIAM., BEARS S9"E, 5.3 FT. DIST., WITH SCRIBE & TAG "CM BM 6/23 DAVID EDWARDS LAND SURVEYING," (1922) A FIR STUMP, 33" DIAM., BEARS N24 1/2"W, 22.9 FT. DIST., WITH HEALED BLAZE & TAG "K MAC A THOMSON 11/10/54," (PER 1963) A FIR STUMP, 28" DIAM., BEARS S3"E, 28.0 FT. DIST., WITH MOSTLY HEALED FACE. SET: A FIR, 7" DIAM., BEARS N19 1/2"E, 28.4 FT. DIST. TO A NAIL IN N.E. FACE, SCRIBED "1/4S3BT" W/ LS WASHER BELOW TAG BY 90216 7/26/24, A MAPLE, 10" DIAM., BEARS S41 1/2"W, 38.9 FT. DIST. TO A NAIL IN N.W. FACE, SCRIBED "1/4S4BT" W/ LS WASHER BELOW TAG ON FRONT AND BACK BY 90216 7/26/24, A YEW, 20" DIAM., BEARS N41 3/4"W, 4.5 FT. DIST TO A NAIL IN N.E. FACE, SCRIBED "1/4S4BT" W/ LS WASHER BELOW TAGS ON FRONT AND BACK BY 90216 7/26/24. ADDED POST S10"W, 5 FT. AND N10"E, 5 FT. ADDED TAG, NAIL, AND PAINT TO THE 5" FIR.



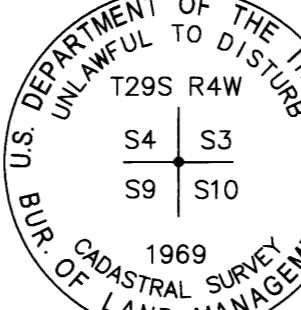
E-12 (360600)

PREVIOUS RENEWALS/SURVEYS, ETC.:

- (1959) - DCSO C.S. FILE 42/345-3
(1969) - DCSO VOL. 39, PG. 15890
(2024) - DCSO M184-31

SCOTT TOLDNESS, PLS 90216, 2024

FOUND: (PER 1969) A 3/4" BLM BRASS CAP ON A 2 1/2" DIAM. IRON POST, 0.6 FT. ABOVE GROUND, FROM WHICH: (PER 1959) A CEDAR, 58" DIAM., BEARS N52 1/4"E, 26.4 FT. (40 LKS.) DIST. TO A NAIL AT FRONT RIGHT CENTER, WITH HEALED BLAZE & BURN TAG BY MARKHAM 1959, (PER 1959) A FIR STUMP, 64" DIAM., 4 FT. TALL, BEARS S47"W, 31.0 FT. (47 LKS.) DIST., WITH BLM TAG, (PER 1959) A MAPLE, 19" DIAM., BEARS N54 1/2"W, 15.8 FT. DIST. TO A NAIL AT RIGHT SIDE CENTER, WITH HEALED BLAZE, SET: A FIR, 13" DIAM., BEARS S56 1/4"E, 11.9 FT. DIST. TO A NAIL IN S.W. FACE, SCRIBED "E1/16S9BT" W/ LS WASHER BELOW, TAG BY 90216 8/14/24, ADDED PAINT, TAGS, & NAILS (PER ABOVE LOCATIONS) TO BTs. ADDED PAINT & TAG TO FOUND STUMP. ADDED POST SOUTH, 5 FT., AND S82"E, 5 FT.



E-13 (400600)

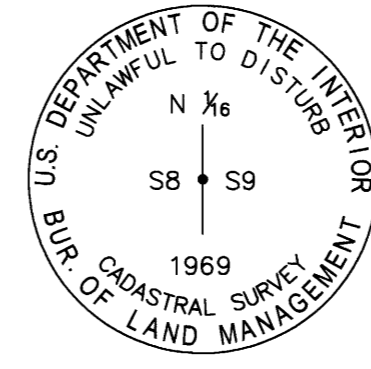
PREVIOUS RENEWALS/SURVEYS, ETC.:

- (1881) - DCSO VOL. 15, PG. 6394
(1950) - DCSO C.S. FILE 40/252
(1959) - DCSO C.S. FILE 42/345-5
(1969) - DCSO VOL. 39, PG. 15877-78
(2005) - DCSO M147-66
(2024) - DCSO M184-31

SCOTT TOLDNESS, PLS 90216, 2024

FOUND: (PER 1969) A 3/4" BLM BRASS CAP ON A 2 1/2" DIAM. IRON POST, 0.4 FT. ABOVE GROUND WITH AN ALUMINUM POST ALONGSIDE AND A POST 2 FT. NORTH, FROM WHICH: (PER 1881) A FIR, 38" DIAM., BEARS N36"E, 19.8 FT. DIST., WITH HACKED "X BT" AND TAG BY CM BM 6/23, (PER 1959) A DEAD STANDING MADRONE, 11" DIAM., BEARS S73"W, 26.1 FT. (35 1/2 LKS.) DIST., WITH TAG BY CS 4/63, (PER 1969) A FIR, 28" DIAM., BEARS N11"W, 57.7 FT. DIST., WITH HEALED BLAZE AND TAG BY AJG 7/28/69, (PER 1959) A FIR STUMP, 20" DIAM., 4.5 FT. TALL, BEARS S26 1/4"E, 14.5 FT. (22 LKS.) DIST., (PER 1959) A MADRONE STUMP, 22" DIAM., 2 FT. TALL, BEARS N9 1/2"E, 35.9 FT. (54 1/2 LKS.) DIST., (PER 1881) A SHATTERED CEDAR, 2 FT. TALL, BEARS S42"W, 11.2 FT. (17 LKS.) DIST., BURN T PIECES LYING ABOUT. SET: A FIR, 24" DIAM., BEARS S90"E, 96.1 FT. DIST. TO A NAIL IN S. FACE, SCRIBED "T29SR4WS10BT" W/ LS WASHER BELOW, TAGS BY 80216 7/24/24, A FIR, 11" DIAM., BEARS S68 1/2"W, 27.0 FT. DIST. TO A NAIL IN N. FACE, SCRIBED "T29SR4WS9BT" W/ LS WASHER BELOW, TAGS BY 90216 7/24/24, PAINTED EXISTING BTs, REPLACED TAGS, AND ADDED NAILS TO S.E. & E. FACES. PAINTED AND TAGGED STUMPS AND STANDING DEAD MADRONE. ADDED POST WEST, 5 FT., AND N10"E, 5 FT., WITH BOUNDARY SIGNS.

T. 29 S., R. 4 W.



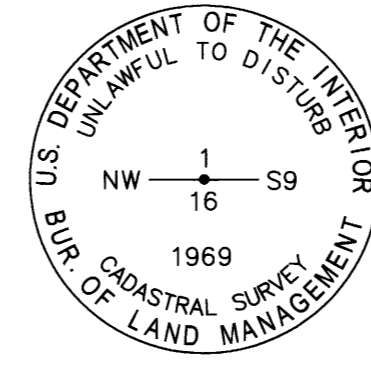
F-9 (300560)

PREVIOUS RENEWALS/SURVEYS, ETC.:

- (1969) - DCSO VOL. 39, PG. 15888-15889

SCOTT TOLDNESS, PLS 90216, 2024

FOUND: (PER 1969) A 3/4" BLM BRASS CAP ON A 2 1/2" DIAM. IRON POST, 3" ABOVE GROUND, WITH 6' T-POST, EAST, 0.3 FT., FROM WHICH: (PER 1969) A HEMLOCK, 22" DIAM., BEARS EAST, 12.9 FT. (19 1/2 LKS) DIST. TO A NAIL AT RIGHT SIDE CENTER, WITH HEALED BLAZE & TAG, (PER 1969) A FIR STUMP, 20" DIAM., BEARS N37"W, 35.4 FT. (55 LKS.) DIST. SET: AN ALDER, 19" DIAM., BEARS N60 1/2"W, 75.0 FT. DIST. TO A NAIL IN E. SIDE CENTER, SCRIBED "N1/16S8BT," A FIR, 23" DIAM., BEARS N39 1/2"W, 64.6 FT. DIST. TO A NAIL IN E. SIDE CENTER, SCRIBED "N1/16S8BT." ADDED TAG, NAILS (PER ABOVE LOCATIONS), AND PAINT TO BTs.



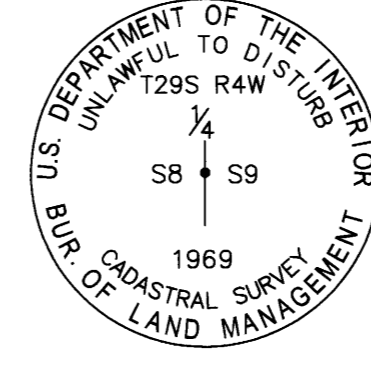
F-10 (320560)

PREVIOUS RENEWALS/SURVEYS, ETC.:

- (1969) - DCSO VOL. 39, PG. 15906 - 15907

SCOTT TOLDNESS, PLS 90216, 2024

FOUND: (PER 1969) A 3/4" BLM BRASS CAP ON A 2 1/2" DIAM. IRON POST, 0.3 FT. ABOVE GROUND, FROM WHICH: (PER 1969) A FIR, 40" DIAM., BEARS S42 1/4"E (S45"E), 5.3 FT. DIST., WITH HEALED BLAZE & TAG, SET: A FIR, 15" DIAM., BEARS N87 1/2"E, 35.1 FT. DIST. TO A NAIL IN LEFT SIDE, BLAZED AND SCRIBED "NW1/16S9BT," W/ LS WASHER PLS 90216, A FIR, 23" DIAM., BEARS S57 1/2"W, 42.1 FT. DIST. TO A NAIL AT RIGHT SIDE CENTER, BLAZED AND SCRIBED "NW1/16S9BT," W/ LS WASHER PLS 90216.



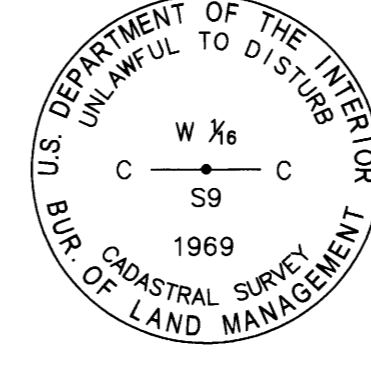
G-9 (300540)

PREVIOUS RENEWALS/SURVEYS, ETC.:

- (1881) - DCSO VOL. 15, PG. 6396
(1899) - DCSO VOL. 15, PG. 6414
(1950) - DCSO C.S. FILE 40/252
(1969) - DCSO VOL. 39, PG. 15888

SCOTT TOLDNESS, PLS 90216, 2024

FOUND: (PER 1969) A 3/4" BLM BRASS CAP ON A 2 1/2" DIAM. IRON POST, 0.3 FT. ABOVE GROUND, FROM WHICH: (PER 1969) A CEDAR, 18" DIAM., BEARS N70 1/2"E (N61"E), 15.8 FT. (24 LKS.) DIST. TO A NAIL, WITH HEALED BLAZE, (PER 1969) A CEDAR, 17" DIAM., BEARS S61"W, 7.9 FT. (12 LKS.) DIST. TO A NAIL, WITH HEALED BLAZE. ADDED: PAINT, SNOW BLAZE, NAILS, AND LS WASHER 90216 AT RIGHT SIDE CENTER OF BTs.



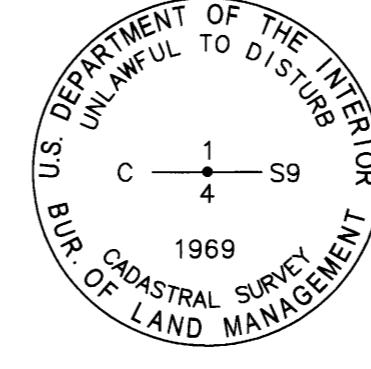
G-10 (320540)

PREVIOUS RENEWALS/SURVEYS, ETC.:

- (1969) - DCSO VOL. 39, PG. 15904-15905

SCOTT TOLDNESS, PLS 90216, 2024

FOUND: (PER 1969) A 3/4" BLM BRASS CAP ON A 2 1/2" DIAM. IRON POST, 0.6 FT. ABOVE GROUND, FROM WHICH: (PER 1969) A MAPLE, 16" DIAM., BEARS N45 1/4"E (N47"E), 50.5 FT. DIST., WITH HEALED BLAZE & ILLEGIBLE BT TAG, (PER 1969) A CEDAR, 28" DIAM., BEARS S0 3/4"W (S1 1/2"W), 22.8 FT DIST., WITH HEALED BLAZE & TAG. ADDED: BT TAGS AND NAILS IN LEFT SIDE CENTER OF BTs.



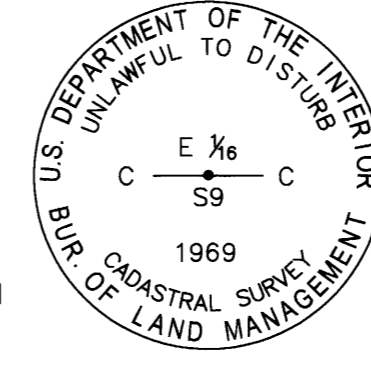
G-11 (340540)

PREVIOUS RENEWALS/SURVEYS, ETC.:

- (1969) - DCSO VOL. 39, PG. 15903

SCOTT TOLDNESS, PLS 90216, 2024

FOUND: (PER 1969) A 3/4" BLM BRASS CAP ON A 2 1/2" DIAM. IRON POST, 1.0 FT. ABOVE GROUND, FROM WHICH: (PER 1969) A FIR, 47" DIAM., BEARS S8"W, 73.5 FT. (109 LKS.) DIST., WITH HEALED BLAZE, (PER 1969) A DEAD STANDING YEW, 18" DIAM., BEARS N30"W, 59.5 FT. (93 LKS.) DIST. SET: A FIR, 20" DIAM., BEARS S80"E, 25.7 FT. DIST. TO A NAIL IN RIGHT SIDE CENTER, SCRIBED "C1/4S9BT," A FIR, 27" DIAM., BEARS S66 1/2"W, 35.8 FT. DIST. TO A NAIL IN LEFT SIDE CENTER, SCRIBED "C1/4S9BT." ADDED NAILS (PER ABOVE LOCATIONS) AND LS WASHER 90216 TO BTs.



G-12 (360540)

PREVIOUS RENEWALS/SURVEYS, ETC.:

- (1969) - DCSO VOL. 39, PG. 15904

SCOTT TOLDNESS, PLS 90216, 2024

FOUND: (PER 1969) A 3/4" BLM BRASS CAP ON A 2 1/2" DIAM. IRON POST, 1.0 FT. ABOVE GROUND, LEANING S., FROM WHICH: (PER 1969) A FIR STUMP, 33" DIAM., 5.5 FT. TALL, BEARS N30"E, 48.2 FT. DIST., WITH TAG BY OC 8/26/69, (PER 1969) A FIR STUMP, 36" DIAM., 5.5 FT. TALL, BEARS S60"E, 69.8 FT. (99 LKS.) DIST., WITH TAG BY OC 8/26/69, SET: A FIR, 14" DIAM., BEARS S65"E, 22.0 FT. DIST. TO A NAIL AT SIDE CENTER, SCRIBED "CE1/16S9BT," W/ LS WASHER BELOW, TAG BY 90216 9/17/24, A CEDAR, 12" DIAM., BEARS N11"W, 24.4 FT. DIST. TO A NAIL, SCRIBED "CE1/16S9BT," W/ LS WASHER BELOW, TAG BY 90216 9/17/24, ADDED POST NORTH, 5 FT., AND SOUTH, 5 FT., WITH BOUNDARY SIGNS.

FILED Date: 1-13-2025 By: S. Sandpoint, Idaho 83864

DOUGLAS COUNTY SURVEYOR

REGISTERED PROFESSIONAL LAND SURVEYOR

S. Sandpoint, Idaho 83864 OREGON MAY 20, 2015 SCOTT L. TOLDNESS 90216PLS

EXPIRES: 06/30/2026

FY2024 BOUNDARY LINE SURVEY - RBDO DRAWING: 24-033A BLM ROSEBURG ROS GLAHE & ASSOCIATES PROFESSIONAL LAND SURVEYORS 303 Church Street Sandpoint, Idaho 83864 208-266-4474 Scale: N/A Checked By: SLT Drawn By: SWO Plot Date: 2/13/2025 Sheet: 3 of 4

M185-29C