

# RECORD OF SURVEY

FOR  
U.S. DEPT. OF THE INTERIOR  
BUREAU OF LAND MANAGEMENT

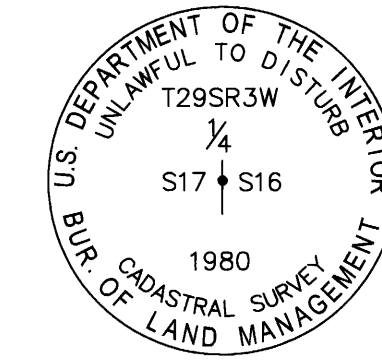
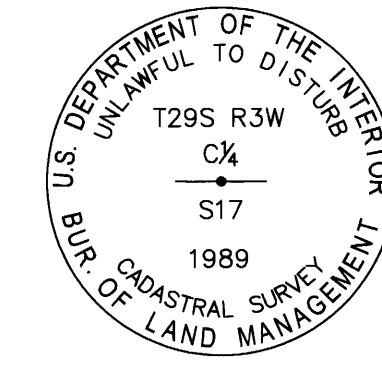
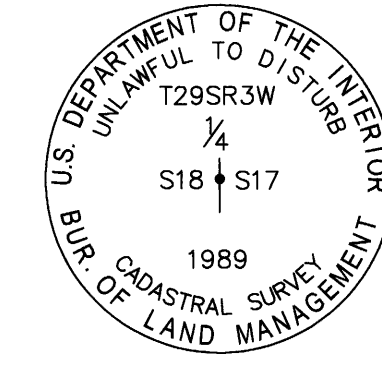
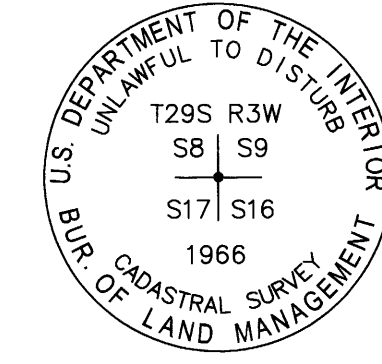
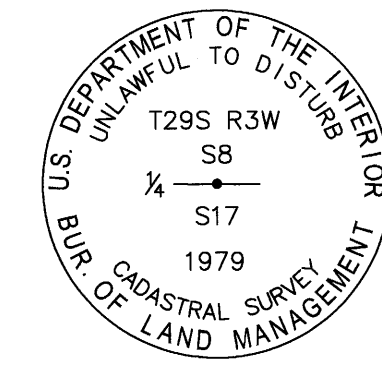
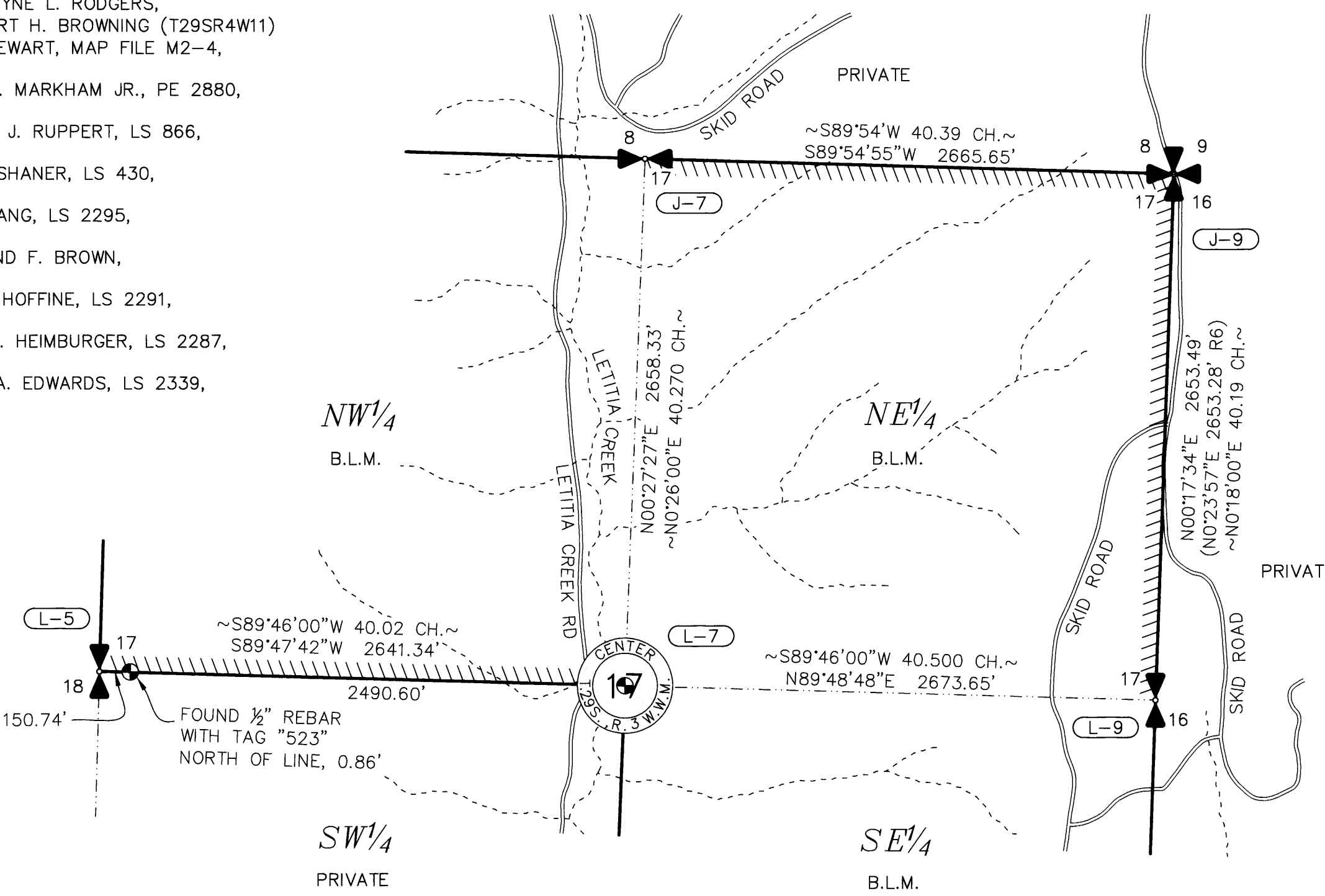
LOCATED IN PORTIONS OF THE S 1/2 OF SEC. 35, T. 28 S., R. 4 W.,  
S 1/2 OF SEC. 31, T. 28 S., R. 3 W.,  
N 1/2 OF SEC. 17, T. 29 S., R. 3 W.,  
SEC. 9, E 1/2 OF SEC. 11, W 1/2 OF SEC. 3, AND THE NE 1/4 OF SEC. 19,  
T. 29 S., R. 4 W., W.M., DOUGLAS COUNTY, OREGON.

## FY2024 BOUNDARY LINE SURVEY - RBDO

### CONTRACT 140L4324C0003

- #### RECORD REFERENCES
- { } 1881 GLO SURVEY BY WILLIAM H. BYARS
  - / / 1964 BLM SURVEY BY DONALD R. BECK
  - [ ] 1967-1977 BLM SURVEY BY LYNN M. ROSEBERRY AND JAMES E. JELLEY
  - | | 1979 BLM SURVEY BY JAMES E. JELLEY AND WAYNE L. ROGERS
  - = = 1987 BLM SURVEY BY BOYD W. PETERSON (T29SR4W19)
  - ~ ~ 1989 BLM SURVEY BY DALE T. BEDELL (T29SR3W17)
  - < > 1992 BLM SURVEY BY WAYNE L. RODGERS, DALE T. BEDELL, & ROBERT H. BROWNING (T29SR4W11)
  - (R1) 1922 SURVEY BY G.G. STEWART, MAP FILE M2-4, VOL. 3, PG. 113-115
  - (R2) 1964 SURVEY BY JOHN H. MARKHAM JR., PE 2880, MAP FILE M28-25
  - (R3) 1976 SURVEY BY WILLIAM J. RUPPERT, LS 866, MAP FILE M60-35
  - (R4) 1981 SURVEY BY BRUCE SHANER, LS 430, ROLL RM 3-54
  - (R5) 1993 SURVEY BY GREG LANG, LS 2295, MAP FILE M18-13
  - (R6) 2000 SURVEY BY RAYMOND F. BROWN, MAP FILE M132-40
  - (R7) 2011 SURVEY BY KEN W. HOFFINE, LS 2291, MAP FILE M157-39
  - (R8) 2011 SURVEY BY MARK A. HEIMBURGER, LS 2287, MAP FILE M157-41
  - (R9) 2024 SURVEY BY DAVID A. EDWARDS, LS 2339, MAP FILE M184-31

### T. 29 S., R. 3 W., SEC. 17



(J-7) (240500)  
PREVIOUS RENEWALS/SURVEYS, ETC.:  
(1857) - DCSO VOL. 15, PG. 6314  
(1881) - DCSO VOL. 15, PG. 6347  
(1991) - DCSO VOL. 43, PG. 16895

SCOTT TOLDNESS, PLS 90216, 2024  
FOUND: (PER 1979) A 3/4" BLM BRASS CAP ON A 2 1/2" DIAM. IRON POST, 0.3 FT. ABOVE GROUND, FROM WHICH:  
(PER 1987) A FIR, 14" DIAM., BEARS S12 1/2 E, 27.2 FT. (41 LKS.) DIST. TO A NAIL, WITH HEALED BLAZE,  
(PER 1987) A FIR, 10" DIAM., BEARS N6 W, 12.2 FT. (18 1/2 LKS.) DIST., TO A NAIL, WITH HEALED BLAZE AND TAG.  
ADDED: PAINT, SNOW BLAZE, NAILS AT RIGHT SIDE CENTER OF BTs, AND LS WASHER 90216, AND NEW TAG TO THE 14" FIR.

(J-9) (300500)  
PREVIOUS RENEWALS/SURVEYS, ETC.:  
(1857) - DCSO VOL. 15, PG. 6307  
(1881) - DCSO VOL. 15, PG. 6345  
(1966) - DCSO VOL. 34, PG. 14044  
(1979-1980) - DCSO VOL. 43, PG. 16887  
(2000) - DCSO M132.40

SCOTT TOLDNESS, PLS 90216, 2024  
FOUND: (PER 1966) A 3/4" BLM BRASS CAP ON 2 1/2" DIAM. IRON POST, 0.4 FT. ABOVE GROUND, WITH 6" T-POST, NORTH, 0.6 FT., FROM WHICH:  
(PER 1966) A FIR, 26" DIAM., BEARS N77 E, 65.3 FT. (99 LKS.) DIST. TO A NAIL IN RIGHT SIDE CENTER, WITH HEALED BLAZE,  
(PER 1966) A MADRONE, 16" DIAM., BEARS S55 E, 73.2 FT. (111 LKS.) DIST. TO A NAIL IN RIGHT SIDE CENTER, WITH OPEN FACE, VISIBLE SCRIBING, AND SNOW BLAZE,  
SET: A FIR, 11" DIAM., BEARS S4 W, 39.2 FT. DIST. TO A NAIL IN LEFT SIDE CENTER, WITH SNOW BLAZE, SCRIBED "T29SR4WS17BT," W/ LS WASHER 90216,  
A MADRONE, 8" DIAM., BEARS N17 1/2 E, 4.14 FT. DIST. TO A NAIL IN RIGHT SIDE, WITH SNOW BLAZE, SCRIBED "T29NR3WS9BT," W/ LS WASHER 90216.  
ADDED PAINT, NAILS (PER ABOVE LOCATIONS), LS WASHER 90216 TO ALL BTs, SNOW BLAZE TO THE 26" FIR,

(L-5) (200440)  
PREVIOUS RENEWALS/SURVEYS, ETC.:  
(1857) - DCSO VOL. 15, PG. 6313-14  
(1881) - DCSO VOL. 15, PG. 6347  
(1951) - DCSO C.S. FILE 40/386-7  
(1962) - DCSO C.S. FILE 52/126-70  
(1989) - DCSO VOL. 50, PG. 18958-59

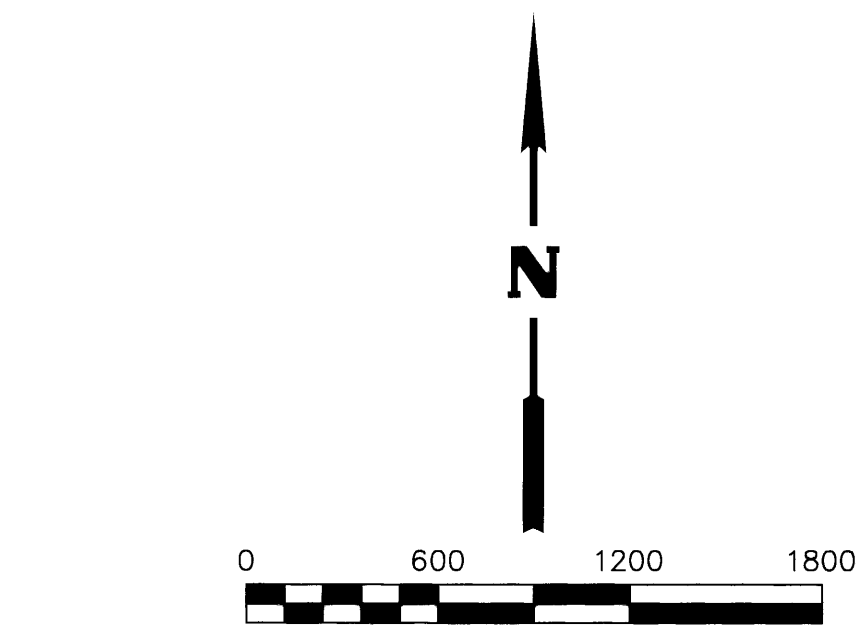
SCOTT TOLDNESS, PLS 90216, 2024  
FOUND: (PER 1989) A 3/4" BLM BRASS CAP ON A 2 1/2" DIAM. STAINLESS STEEL POST, 0.3 FT. ABOVE GROUND, FROM WHICH:  
A CEDAR, 26" DIAM., BEARS S42 E, 19.1 FT. (30 LKS.) DIST. TO A NAIL IN RIGHT SIDE CENTER, WITH HEALED BLAZE,  
(PER 1951) A MADRONE, 20" DIAM., BEARS S50 W, 12.9 FT. (19 1/2 LKS.) DIST. TO A NAIL IN LEFT SIDE CENTER, WITH HEALED BLAZE,  
(PER 1962) A CEDAR, 21" DIAM., BEARS S20 W, 19.1 FT. (29 LKS.) DIST. TO A NAIL IN RIGHT SIDE CENTER, WITH HEALED BLAZE.  
ADDED: PAINT, SNOW BLAZE, NAILS (PER ABOVE LOCATIONS), AND LS WASHER 90216 TO BTs, AND NEW TAG TO THE 21" CEDAR.

(L-7) (240440)  
PREVIOUS RENEWALS/SURVEYS, ETC.:  
(1989) - DCSO VOL. 50, 18961

SCOTT TOLDNESS, PLS 90216, 2024  
FOUND: (PER 1989) A 3/4" BLM BRASS CAP ON A 2 1/2" DIAM. STAINLESS STEEL POST, 0.5 FT. ABOVE GROUND, FROM WHICH:  
(PER 1989) A CEDAR, 23" DIAM., BEARS S26 1/2 E (S26 E), 7.6 FT. (12 LKS.) DIST. TO A NAIL AT LEFT SIDE CENTER, WITH HEALED BLAZE AND ILLEGIBLE TAG,  
(PER 1989) A FIR, 16" DIAM., BEARS N55 1/2 W (N48 W), 11.5 FT. DIST. TO A NAIL AT RIGHT SIDE CENTER, WITH HEALED BLAZE.  
ADDED NAIL (PER ABOVE LOCATIONS) TO BOTH BTs.

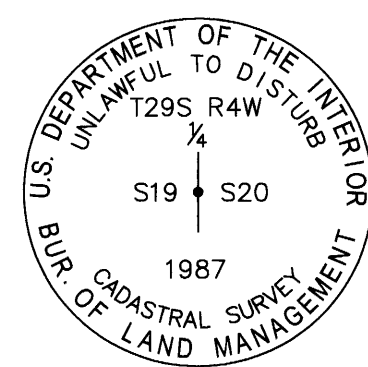
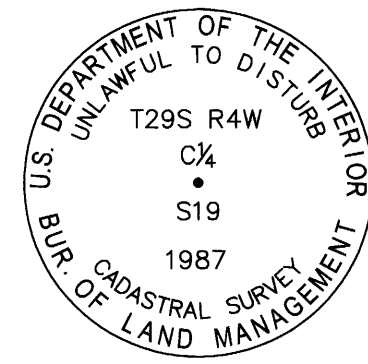
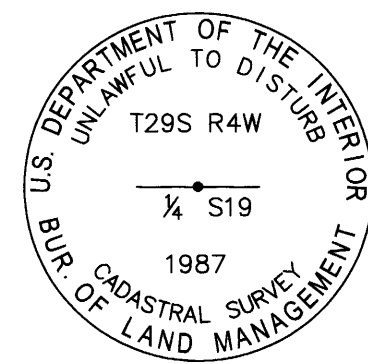
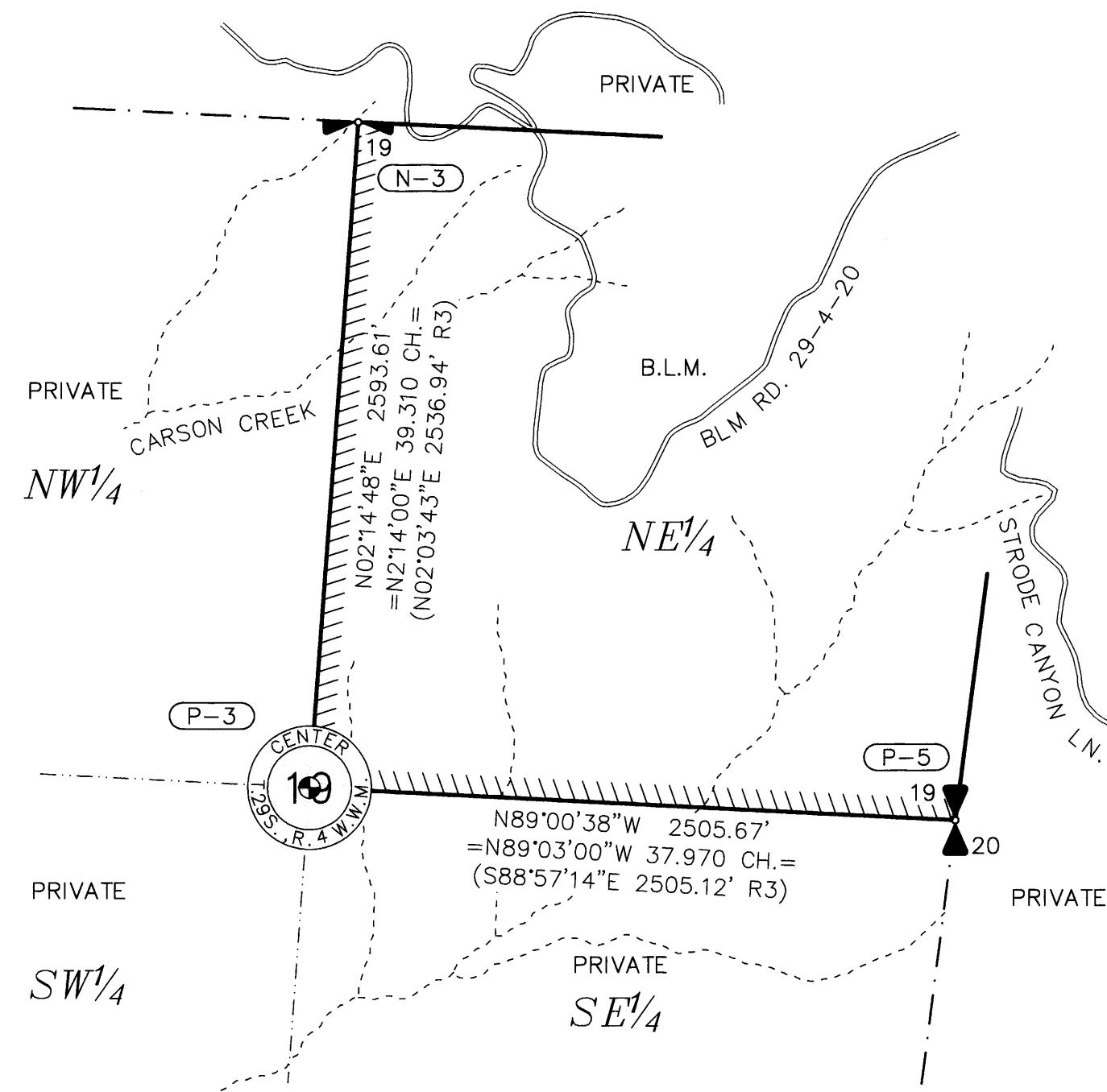
(L-9) (300440)  
PREVIOUS RENEWALS/SURVEYS, ETC.:  
(1857) - DCSO VOL. 15, PG. 6307  
(1980) - DCSO VOL. 43, PG. 16885  
(1989-1990) - DCSO VOL. 50, PG. 18962  
(2000) - DCSO M132-40

SCOTT TOLDNESS, PLS 90216, 2024  
FOUND: (PER 1980) A 3/4" BLM BRASS CAP ON A 2 1/2" DIAM. IRON POST, 0.3 FT. ABOVE GROUND, WITH 6" T-POST, NORTH, 0.3 FT., FROM WHICH:  
(PER 1980) A CEDAR, 23" DIAM., BEARS N25 1/2 E, 139.1 FT. (211 LKS.) DIST. TO A NAIL, WITH BLM TAG,  
(PER 1980) A FIR, 36" DIAM., BEARS S86 W, 47.2 FT. (71 1/2 LKS.) DIST., WITH HEALED BLAZE,  
SET: A FIR, 8" DIAM., BEARS N57 1/2 W, 116.3 FT. DIST. TO A NAIL, SCRIBED "X517BT,"  
A PINE, 9" DIAM., BEARS N35 W, 113.15 FT. TO A NAIL, SCRIBED "X517BT."  
ADDED PAINT, SNOW BLAZES, NAILS IN RIGHT SIDE CENTER, & LS WASHER 90216 TO BTs.  
NO SUITABLE TREES TO THE EAST.



- #### LEGEND
- SECTIONAL CORNER, AS NOTED.
  - FOUND MONUMENTATION, AS NOTED.
  - PROPERTY BOUNDARY MARKED AND POSTED THIS SURVEY
  - CORNER INDEX (TYP.)
  - FENCE LINE
  - APPROXIMATE CREEK CENTERLINE

### T. 29 S., R. 4 W., SEC. 19



(N-3) (140400)  
PREVIOUS RENEWALS/SURVEYS, ETC.:  
(1854) - DCSO VOL. 15, PG. 6382  
(1899) - DCSO VOL. 15, PG. 6417  
(1955) - DCSO C.S. FILE 41/386-2  
(1963) - DCSO C.S. FILE 52/126-132  
(1976) - DCSO M60-35  
(1987) - DCSO VOL. 48, PG. 18514  
(2021) - DCSO M180-11

SCOTT TOLDNESS, PLS 90216, 2024  
FOUND: (PER 1987) A 3/4" BLM BRASS CAP ON 2 1/2" DIAM. IRON POST, 0.2 FT. ABOVE GROUND, FROM WHICH:  
(PER 1987) A FIR, 13" DIAM., BEARS S72 E, 2.6 FT. (4 LKS) DIST. TO A NAIL IN NORTH SIDE CENTER, WITH HEALED BLAZE, SNOW BLAZE, AND TAG BY LONE ROCK TIMBER,  
(PER 1987) A FIR, 14" DIAM., BEARS S30 W, 33.6 FT. (51 LKS.) DIST. TO A NAIL IN EAST SIDE CENTER, WITH HEALED BLAZE, SNOW BLAZE, AND TAG BY LONE ROCK TIMBER.  
ADDED: PAINT, NAILS (PER ABOVE LOCATIONS), & BT TAGS TO BTs.

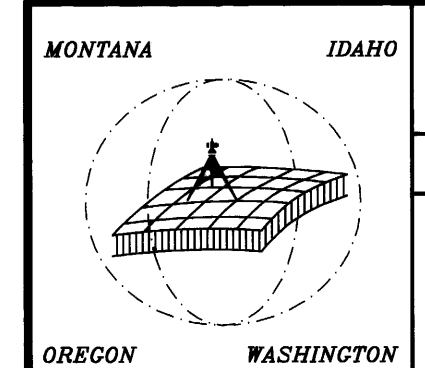
(P-3) (140340)  
PREVIOUS RENEWALS/SURVEYS, ETC.:  
(1976) - DCSO M60-35  
(1987) - DCSO VOL. 48, PG. 18524

SCOTT TOLDNESS, PLS 90216, 2024  
FOUND: (PER 1987) A 3/4" BLM BRASS CAP ON 2 1/2" DIAM. STAINLESS STEEL POST, 0.3 FT. ABOVE GROUND, FROM WHICH:  
(PER 1987) A FIR, 12" DIAM., BEARS S67 1/2 E, 8.9 FT. (13 1/2 LKS.) DIST. TO A NAIL, WITH HEALED BLAZE AND TAG,  
(PER 1987) A FIR, 11" DIAM., BEARS S15 W, 18.5 FT. (28 LKS.) DIST. TO A NAIL, WITH HEALED BLAZE AND TAG.  
ADDED: PAINT, SNOW BLAZE, NAILS, AND LS WASHER 90216 AT LEFT SIDE CENTER OF BTs.

(P-5) (200340)  
PREVIOUS RENEWALS/SURVEYS, ETC.:  
(1854) - DCSO VOL. 15, PG. 6381  
(1976) - DCSO M60-35 (CALCULATED CORNER POSITION SHOWN ONLY)  
(1987) - DCSO VOL. 48, PG. 18511-12

SCOTT TOLDNESS, PLS 90216, 2024  
FOUND: (PER 1987) A 3/4" BLM BRASS CAP ON 2 1/2" DIAM. STAINLESS STEEL POST, 0.3 FT. ABOVE GROUND, AT A W. AND S. FENCE INTERSECTION, FROM WHICH:  
(PER 1987) A FIR, 13" DIAM., BEARS N59 E, 32.0 FT. (48 1/2 LKS.) DIST. TO A NAIL, WITH HEALED BLAZE,  
(PER 1987) A FIR, 10" DIAM., BEARS S68 W, 11.9 FT. (18 LKS.) DIST. TO A NAIL, WITH HEALED BLAZE.  
ADDED: PAINT, SNOW BLAZE, NAILS, AND LS WASHER 90216 AT LEFT SIDE CENTER OF BTs. AND NEW TAG TO THE 10" FIR.

REGISTERED PROFESSIONAL LAND SURVEYOR  
*Scott Toldness*  
OREGON  
MAY 20 2015  
SCOTT L. TOLDNESS  
90216PLS  
EXPIRES: 06/30/2026



FY2024	
BOUNDARY LINE SURVEY - RBDO	
DRAWING: 24-033A BLM ROSEBURG ROS	
GLAHE & ASSOCIATES PROFESSIONAL LAND SURVEYORS 303 Church Street Sandpoint, Idaho 83864 208-265-4474	Scale: 1" = 600' Checked By: SLT Drawn By: SWO Plot Date: 2/13/2025 Sheet: 1 of 4

FILED  
Date 2-19-2025 By: SLT  
This survey consists of:  
Map: 185-29 A-D  
Narrative:  
Corner Rpt:  
DOUGLAS COUNTY SURVEYOR