

# RECORD OF SURVEY

FOR  
U.S. DEPT. OF THE INTERIOR  
BUREAU OF LAND MANAGEMENT

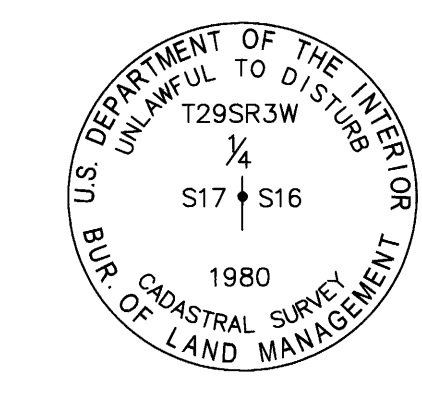
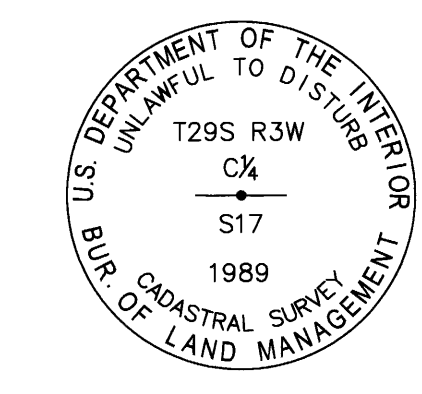
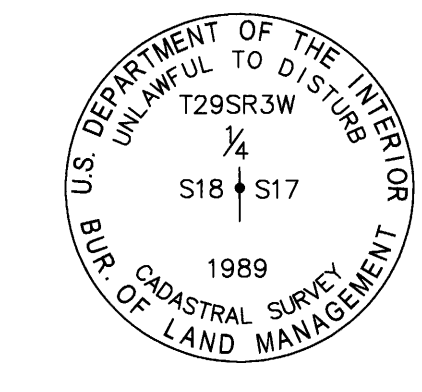
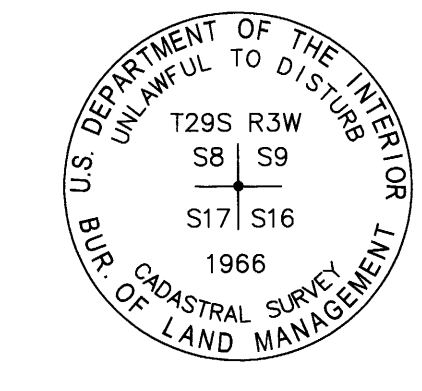
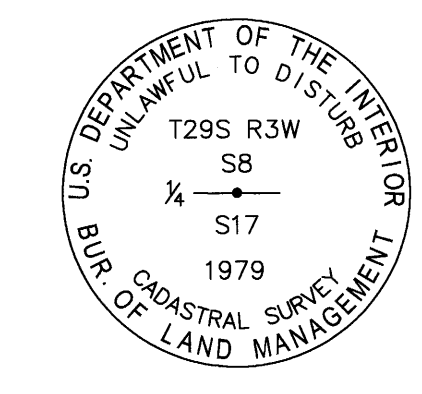
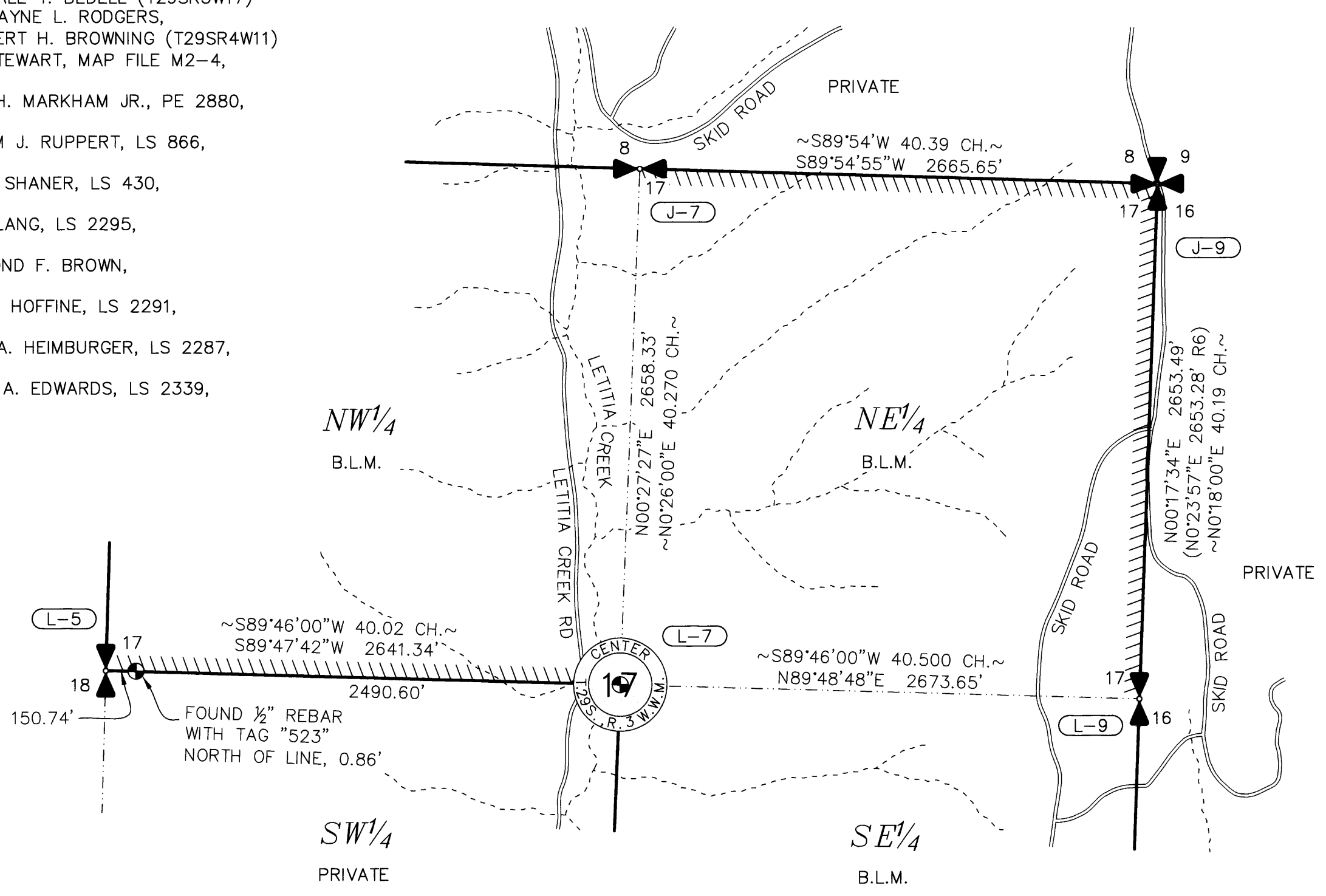
LOCATED IN PORTIONS OF THE S 1/2 OF SEC. 35, T. 28 S., R. 4 W.,  
S 1/2 OF SEC. 31, T. 28 S., R. 3 W.,  
N 1/2 OF SEC. 17, T. 29 S., R. 3 W.,  
SEC. 9, E 1/2 OF SEC. 11, W 1/2 OF SEC. 3, AND THE NE 1/4 OF SEC. 19,  
T. 29 S., R. 4 W., W.M., DOUGLAS COUNTY, OREGON.

## FY2024 BOUNDARY LINE SURVEY - RBDO

### CONTRACT 140L4324C0003

- #### RECORD REFERENCES
- { } 1881 GLO SURVEY BY WILLIAM H. BYARS
  - / / 1964 BLM SURVEY BY DONALD R. BECK
  - [ ] 1967-1977 BLM SURVEY BY LYNN M. ROSEBERRY AND JAMES E. JELLEY
  - | | 1979 BLM SURVEY BY JAMES E. JELLEY AND WAYNE L. ROGERS
  - = = 1987 BLM SURVEY BY BOYD W. PETERSON (T29SR4W19)
  - ~ ~ 1989 BLM SURVEY BY DALE T. BEDELL (T29SR3W17)
  - < > 1992 BLM SURVEY BY WAYNE L. RODGERS, DALE T. BEDELL, & ROBERT H. BROWNING (T29SR4W11)
  - (R1) 1922 SURVEY BY G.G. STEWART, MAP FILE M2-4, VOL. 3, PG. 113-115
  - (R2) 1964 SURVEY BY JOHN H. MARKHAM JR., PE 2880, MAP FILE M28-25
  - (R3) 1976 SURVEY BY WILLIAM J. RUPPERT, LS 866, MAP FILE M60-35
  - (R4) 1981 SURVEY BY BRUCE SHANER, LS 430, ROLL RM 3-54
  - (R5) 1993 SURVEY BY GREG LANG, LS 2295, MAP FILE M18-13
  - (R6) 2000 SURVEY BY RAYMOND F. BROWN, MAP FILE M132-40
  - (R7) 2011 SURVEY BY KEN W. HOFFINE, LS 2291, MAP FILE M157-39
  - (R8) 2011 SURVEY BY MARK A. HEIMBURGER, LS 2287, MAP FILE M157-41
  - (R9) 2024 SURVEY BY DAVID A. EDWARDS, LS 2339, MAP FILE M184-31

### T. 29 S., R. 3 W., SEC. 17



(J-7) (240500)  
PREVIOUS RENEWALS/SURVEYS, ETC.:  
(1857) - DCSO VOL. 15, PG. 6314  
(1881) - DCSO VOL. 15, PG. 6347  
(1991) - DCSO VOL. 43, PG. 16895

SCOTT TOLDNESS, PLS 90216, 2024  
FOUND: (PER 1979) A 3/4" BLM BRASS CAP ON A 2 1/2" DIAM. IRON POST, 0.3 FT. ABOVE GROUND, FROM WHICH:  
(PER 1987) A FIR, 14" DIAM., BEARS S12 1/2 E, 27.2 FT. (41 LKS.) DIST. TO A NAIL, WITH HEALED BLAZE,  
(PER 1987) A FIR, 10" DIAM., BEARS N6 W, 12.2 FT. (18 1/2 LKS.) DIST., TO A NAIL, WITH HEALED BLAZE AND TAG.  
ADDED: PAINT, SNOW BLAZE, NAILS AT RIGHT SIDE CENTER OF BTs, AND LS WASHER 90216, AND NEW TAG TO THE 14" FIR.

(J-9) (300500)  
PREVIOUS RENEWALS/SURVEYS, ETC.:  
(1857) - DCSO VOL. 15, PG. 6307  
(1881) - DCSO VOL. 15, PG. 6345  
(1966) - DCSO VOL. 34, PG. 14044  
(1979-1980) - DCSO VOL. 43, PG. 16887  
(2000) - DCSO M132.40

SCOTT TOLDNESS, PLS 90216, 2024  
FOUND: (PER 1966) A 3/4" BLM BRASS CAP ON 2 1/2" DIAM. IRON POST, 0.4 FT. ABOVE GROUND, WITH 6' T-POST, NORTH, 0.6 FT., FROM WHICH:  
(PER 1966) A FIR, 26" DIAM., BEARS N77 E, 65.3 FT. (99 LKS.) DIST. TO A NAIL IN RIGHT SIDE CENTER, WITH HEALED BLAZE,  
(PER 1966) A MADRONE, 16" DIAM., BEARS S55 E, 73.2 FT. (111 LKS.) DIST. TO A NAIL IN RIGHT SIDE CENTER, WITH OPEN FACE, VISIBLE SCRIBING, AND SNOW BLAZE,  
SET: A FIR, 11" DIAM., BEARS S4 W, 39.2 FT. DIST. TO A NAIL IN LEFT SIDE CENTER, WITH SNOW BLAZE, SCRIBED "T29SR4WS17BT," W/ LS WASHER 90216,  
A MADRONE, 8" DIAM., BEARS N17 1/2 E, 4.14 FT. DIST. TO A NAIL IN RIGHT SIDE, WITH SNOW BLAZE, SCRIBED "T29NR3WS9BT," W/ LS WASHER 90216.  
ADDED PAINT, NAILS (PER ABOVE LOCATIONS), LS WASHER 90216 TO ALL BTs, SNOW BLAZE TO THE 26" FIR,

(L-5) (200440)  
PREVIOUS RENEWALS/SURVEYS, ETC.:  
(1857) - DCSO VOL. 15, PG. 6313-14  
(1881) - DCSO VOL. 15, PG. 6347  
(1951) - DCSO C.S. FILE 40/386-7  
(1962) - DCSO C.S. FILE 52/126-70  
(1989) - DCSO VOL. 50, PG. 18958-59

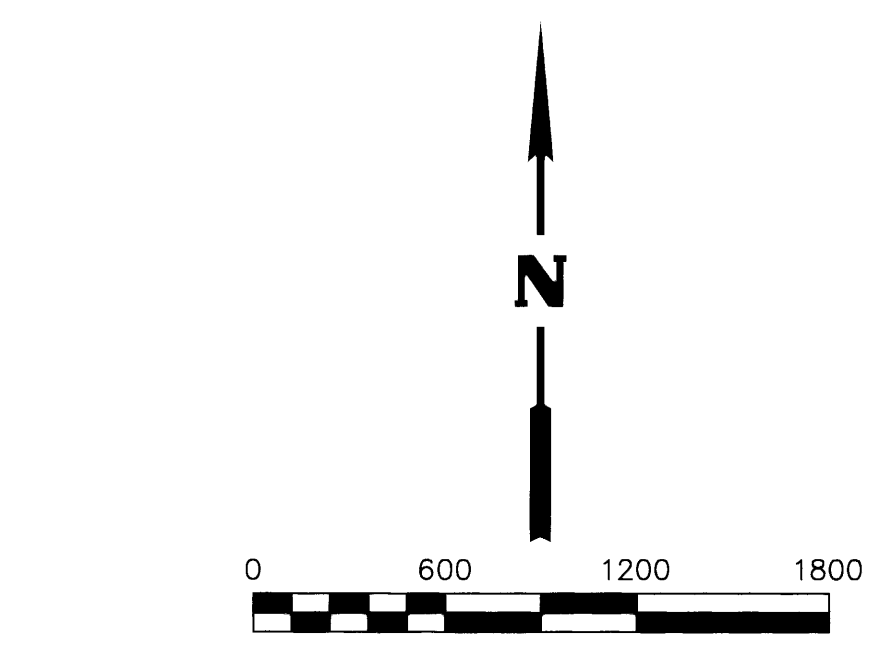
SCOTT TOLDNESS, PLS 90216, 2024  
FOUND: (PER 1989) A 3/4" BLM BRASS CAP ON A 2 1/2" DIAM. STAINLESS STEEL POST, 0.3 FT. ABOVE GROUND, FROM WHICH:  
A CEDAR, 26" DIAM., BEARS S42 E, 19.1 FT. (30 LKS.) DIST. TO A NAIL IN RIGHT SIDE CENTER, WITH HEALED BLAZE,  
(PER 1951) A MADRONE, 20" DIAM., BEARS S50 W, 12.9 FT. (19 1/2 LKS.) DIST. TO A NAIL IN LEFT SIDE CENTER, WITH HEALED BLAZE,  
(PER 1962) A CEDAR, 21" DIAM., BEARS S20 W, 19.1 FT. (29 LKS.) DIST. TO A NAIL IN RIGHT SIDE CENTER, WITH HEALED BLAZE.  
ADDED: PAINT, SNOW BLAZE, NAILS (PER ABOVE LOCATIONS), AND LS WASHER 90216 TO BTs, AND NEW TAG TO THE 21" CEDAR.

(L-7) (240440)  
PREVIOUS RENEWALS/SURVEYS, ETC.:  
(1989) - DCSO VOL. 50, 18961

SCOTT TOLDNESS, PLS 90216, 2024  
FOUND: (PER 1989) A 3/4" BLM BRASS CAP ON A 2 1/2" DIAM. STAINLESS STEEL POST, 0.5 FT. ABOVE GROUND, FROM WHICH:  
(PER 1989) A CEDAR, 23" DIAM., BEARS S26 1/2 E (S26 E), 7.6 FT. (12 LKS.) DIST. TO A NAIL AT LEFT SIDE CENTER, WITH HEALED BLAZE AND ILLEGIBLE TAG,  
(PER 1989) A FIR, 16" DIAM., BEARS N55 1/2 W (N48 W), 11.5 FT. DIST. TO A NAIL AT RIGHT SIDE CENTER, WITH HEALED BLAZE.  
ADDED NAIL (PER ABOVE LOCATIONS) TO BOTH BTs.

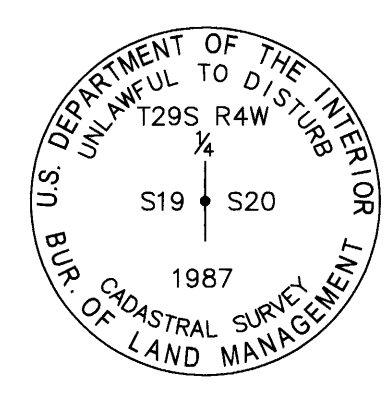
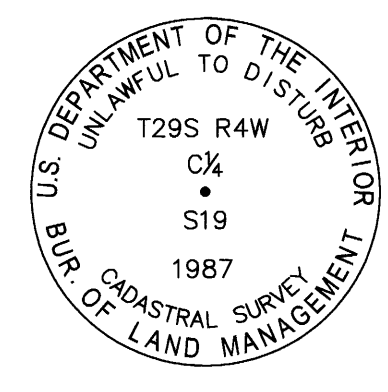
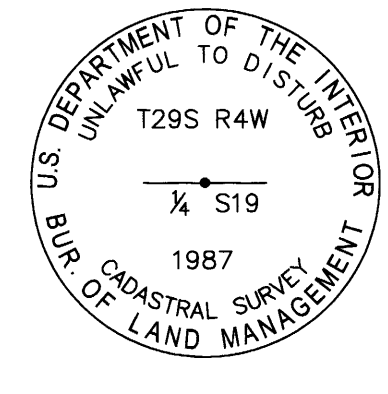
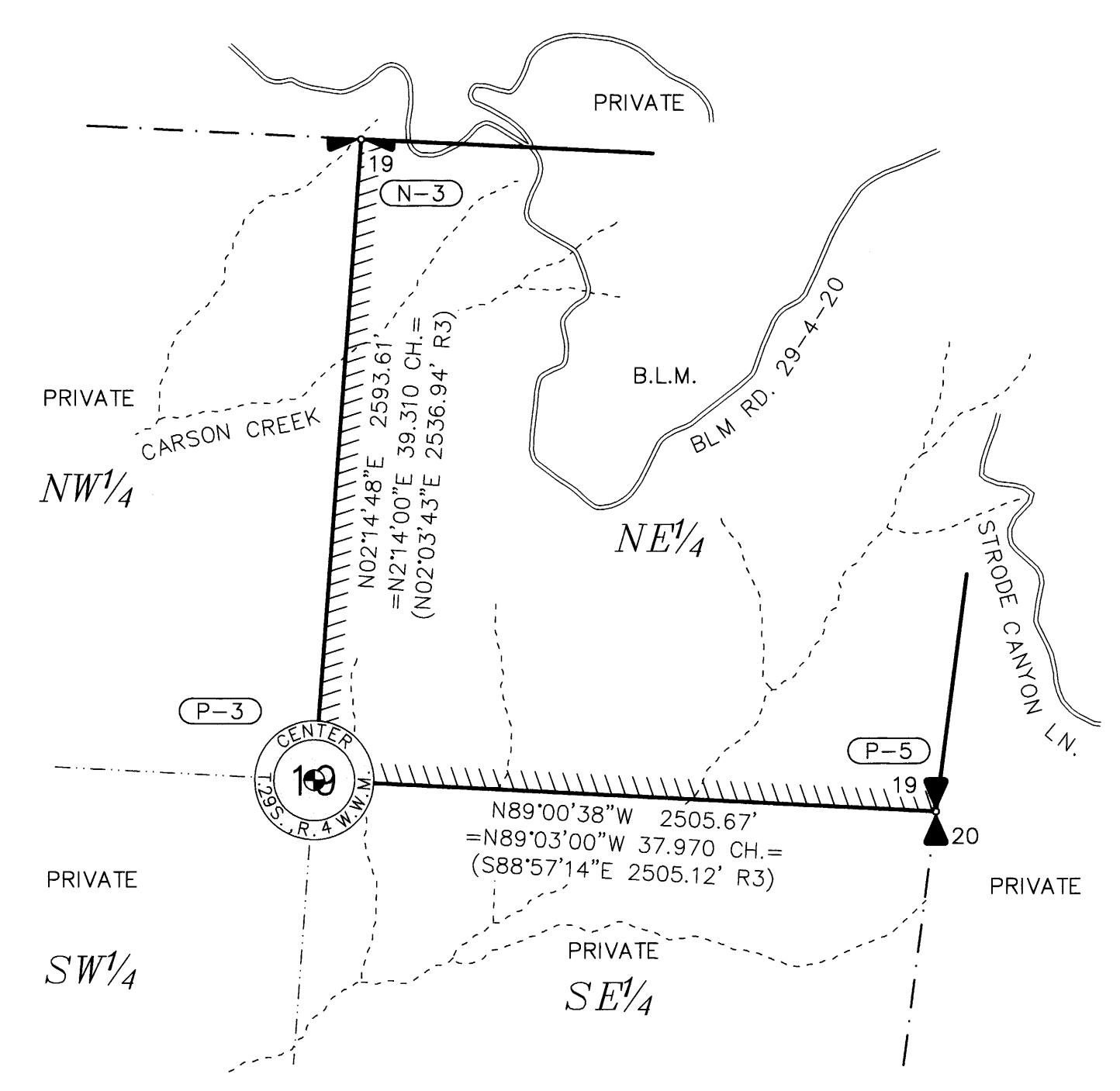
(L-9) (300440)  
PREVIOUS RENEWALS/SURVEYS, ETC.:  
(1857) - DCSO VOL. 15, PG. 6307  
(1980) - DCSO VOL. 43, PG. 16885  
(1989-1990) - DCSO VOL. 50, PG. 18962  
(2000) - DCSO M132-40

SCOTT TOLDNESS, PLS 90216, 2024  
FOUND: (PER 1980) A 3/4" BLM BRASS CAP ON A 2 1/2" DIAM. IRON POST, 0.3 FT. ABOVE GROUND, WITH 6' T-POST, NORTH, 0.3 FT., FROM WHICH:  
(PER 1980) A CEDAR, 23" DIAM., BEARS N25 1/2 E, 139.1 FT. (211 LKS.) DIST. TO A NAIL, WITH BLM TAG,  
(PER 1980) A FIR, 36" DIAM., BEARS S86 W, 47.2 FT. (71 1/2 LKS.) DIST., WITH HEALED BLAZE,  
SET: A FIR, 8" DIAM., BEARS N57 1/2 W, 116.3 FT. DIST. TO A NAIL, SCRIBED "X517BT,"  
A PINE, 9" DIAM., BEARS N35 W, 113.15 FT. TO A NAIL, SCRIBED "X517BT."  
ADDED PAINT, SNOW BLAZES, NAILS IN RIGHT SIDE CENTER, & LS WASHER 90216 TO BTs.  
NO SUITABLE TREES TO THE EAST.



- #### LEGEND
- SECTIONAL CORNER, AS NOTED.
  - FOUND MONUMENTATION, AS NOTED.
  - PROPERTY BOUNDARY MARKED AND POSTED THIS SURVEY
  - CORNER INDEX (TYP.)
  - FENCE LINE
  - APPROXIMATE CREEK CENTERLINE

### T. 29 S., R. 4 W., SEC. 19



(N-3) (140400)  
PREVIOUS RENEWALS/SURVEYS, ETC.:  
(1854) - DCSO VOL. 15, PG. 6382  
(1899) - DCSO VOL. 15, PG. 6417  
(1955) - DCSO C.S. FILE 41/386-2  
(1963) - DCSO C.S. FILE 52/126-132  
(1976) - DCSO M60-35  
(1987) - DCSO VOL. 48, PG. 18514  
(2021) - DCSO M180-11

SCOTT TOLDNESS, PLS 90216, 2024  
FOUND: (PER 1987) A 3/4" BLM BRASS CAP ON 2 1/2" DIAM. IRON POST, 0.2 FT. ABOVE GROUND, FROM WHICH:  
(PER 1987) A FIR, 13" DIAM., BEARS S72 E, 2.6 FT. (4 LKS) DIST. TO A NAIL IN NORTH SIDE CENTER, WITH HEALED BLAZE, SNOW BLAZE, AND TAG BY LONE ROCK TIMBER,  
(PER 1987) A FIR, 14" DIAM., BEARS S30 W, 33.6 FT. (51 LKS.) DIST. TO A NAIL IN EAST SIDE CENTER, WITH HEALED BLAZE, SNOW BLAZE, AND TAG BY LONE ROCK TIMBER.  
ADDED: PAINT, NAILS (PER ABOVE LOCATIONS), & BT TAGS TO BTs.

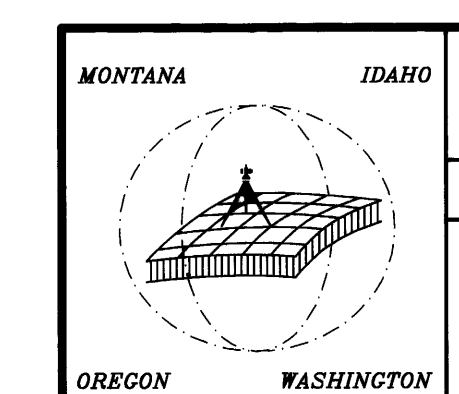
(P-3) (140340)  
PREVIOUS RENEWALS/SURVEYS, ETC.:  
(1976) - DCSO M60-35  
(1987) - DCSO VOL. 48, PG. 18524

SCOTT TOLDNESS, PLS 90216, 2024  
FOUND: (PER 1987) A 3/4" BLM BRASS CAP ON 2 1/2" DIAM. STAINLESS STEEL POST, 0.3 FT. ABOVE GROUND, FROM WHICH:  
(PER 1987) A FIR, 12" DIAM., BEARS S67 1/2 E, 8.9 FT. (13 1/2 LKS.) DIST. TO A NAIL, WITH HEALED BLAZE AND TAG,  
(PER 1987) A FIR, 11" DIAM., BEARS S15 W, 18.5 FT. (28 LKS.) DIST. TO A NAIL, WITH HEALED BLAZE AND TAG.  
ADDED: PAINT, SNOW BLAZE, NAILS, AND LS WASHER 90216 AT LEFT SIDE CENTER OF BTs.

(P-5) (200340)  
PREVIOUS RENEWALS/SURVEYS, ETC.:  
(1854) - DCSO VOL. 15, PG. 6381  
(1976) - DCSO M60-35 (CALCULATED CORNER POSITION SHOWN ONLY)  
(1987) - DCSO VOL. 48, PG. 18511-12

SCOTT TOLDNESS, PLS 90216, 2024  
FOUND: (PER 1987) A 3/4" BLM BRASS CAP ON 2 1/2" DIAM. STAINLESS STEEL POST, 0.3 FT. ABOVE GROUND, AT A W. AND S. FENCE INTERSECTION, FROM WHICH:  
(PER 1987) A FIR, 13" DIAM., BEARS N59 E, 32.0 FT. (48 1/2 LKS.) DIST. TO A NAIL, WITH HEALED BLAZE,  
(PER 1987) A FIR, 10" DIAM., BEARS S68 W, 11.9 FT. (18 LKS.) DIST. TO A NAIL, WITH HEALED BLAZE.  
ADDED: PAINT, SNOW BLAZE, NAILS, AND LS WASHER 90216 AT LEFT SIDE CENTER OF BTs. AND NEW TAG TO THE 10" FIR.

REGISTERED PROFESSIONAL LAND SURVEYOR  
*Scott Toldness*  
OREGON  
MAY 20 2015  
SCOTT L. TOLDNESS  
90216PLS  
EXPIRES: 06/30/2026



MONTANA IDAHO OREGON WASHINGTON

FY2024  
BOUNDARY LINE SURVEY - RBDO  
DRAWING: 24-033A BLM ROSEBURG ROS

GLAHE & ASSOCIATES  
PROFESSIONAL LAND SURVEYORS  
303 Church Street  
Sandpoint, Idaho 83864  
208-265-4474

Scale: 1" = 600'  
Checked By: SLT  
Drawn By: SWO  
Plot Date: 2/13/2025  
Sheet: 1 of 4

FILED  
Date 2-19-2025 By: SLT  
This survey consists of:  
Map: 185-29 A-D  
Narrative:  
Corner Rpt:  
DOUGLAS COUNTY SURVEYOR

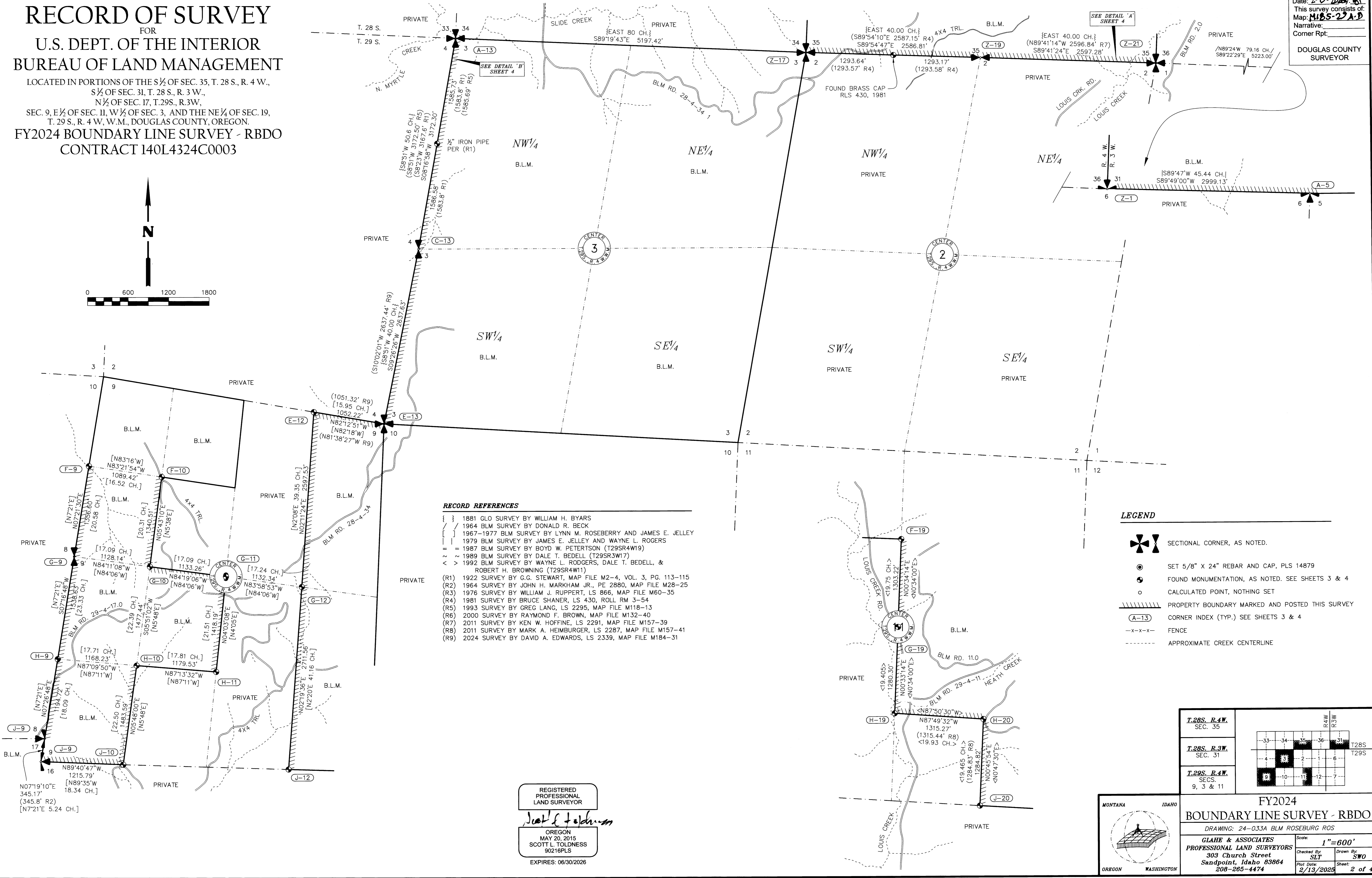
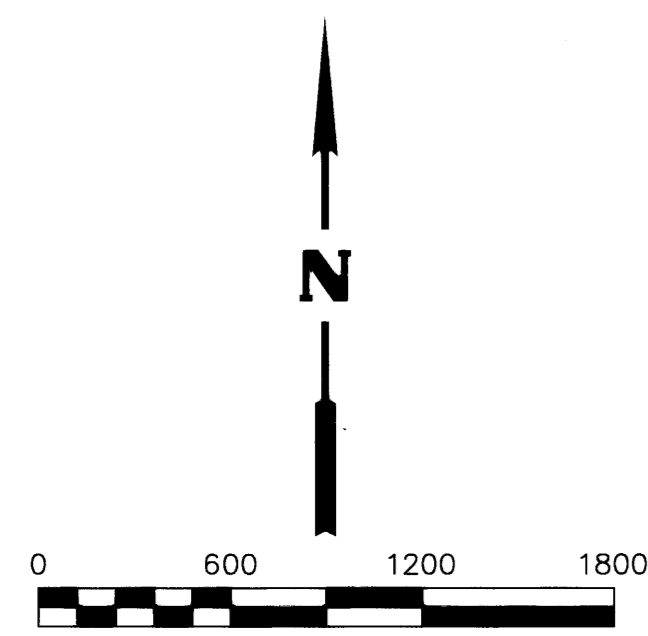
862-5811W

# RECORD OF SURVEY

FOR  
U.S. DEPT. OF THE INTERIOR  
BUREAU OF LAND MANAGEMENT

LOCATED IN PORTIONS OF THE S 1/2 OF SEC. 35, T. 28 S., R. 4 W.,  
S 1/2 OF SEC. 31, T. 28 S., R. 3 W.,  
N 1/2 OF SEC. 17, T. 29 S., R. 3 W.,  
SEC. 9, E 1/2 OF SEC. 11, W 1/2 OF SEC. 3, AND THE NE 1/4 OF SEC. 19,  
T. 29 S., R. 4 W, W.M., DOUGLAS COUNTY, OREGON.  
FY2024 BOUNDARY LINE SURVEY - RBDO  
CONTRACT 140L4324C0003

FILED  
Date: 2-9-2025  
This survey consists of:  
Map: M185-29A-D  
Narrative:  
Corner Rpt:  
DOUGLAS COUNTY  
SURVEYOR

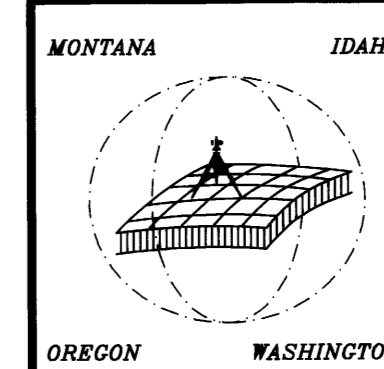


- ### RECORD REFERENCES
- { } 1881 GLO SURVEY BY WILLIAM H. BYARS
  - [ ] 1964 BLM SURVEY BY DONALD R. BECK
  - [ ] 1967-1977 BLM SURVEY BY LYNN M. ROSEBERRY AND JAMES E. JELLEY
  - [ ] 1979 BLM SURVEY BY JAMES E. JELLEY AND WAYNE L. ROGERS
  - [ ] 1987 BLM SURVEY BY BOYD W. PETERSON (T29SR4W19)
  - [ ] 1989 BLM SURVEY BY DALE T. BEDELL (T29SR3W17)
  - [ ] 1992 BLM SURVEY BY WAYNE L. RODGERS, DALE T. BEDELL, & ROBERT H. BROWNING (T29SR4W11)
  - (R1) 1922 SURVEY BY G.G. STEWART, MAP FILE M2-4, VOL. 3, PG. 113-115
  - (R2) 1964 SURVEY BY JOHN H. MARKHAM JR., PE 2880, MAP FILE M28-25
  - (R3) 1976 SURVEY BY WILLIAM J. RUPPERT, LS 866, MAP FILE M60-35
  - (R4) 1981 SURVEY BY BRUCE SHANER, LS 430, ROLL RM 3-54
  - (R5) 1993 SURVEY BY GREG LANG, LS 2295, MAP FILE M118-13
  - (R6) 2000 SURVEY BY RAYMOND F. BROWN, MAP FILE M132-40
  - (R7) 2011 SURVEY BY KEN W. HOFFINE, LS 2291, MAP FILE M157-39
  - (R8) 2011 SURVEY BY MARK A. HEIMBURGER, LS 2287, MAP FILE M157-41
  - (R9) 2024 SURVEY BY DAVID A. EDWARDS, LS 2339, MAP FILE M184-31

- ### LEGEND
- SECTIONAL CORNER, AS NOTED.
  - SET 5/8" X 24" REBAR AND CAP, PLS 14879
  - FOUND MONUMENTATION, AS NOTED. SEE SHEETS 3 & 4
  - CALCULATED POINT, NOTHING SET
  - PROPERTY BOUNDARY MARKED AND POSTED THIS SURVEY
  - CORNER INDEX (TYP.) SEE SHEETS 3 & 4
  - FENCE
  - APPROXIMATE CREEK CENTERLINE

REGISTERED  
PROFESSIONAL  
LAND SURVEYOR  
*Scott L. Toldness*  
OREGON  
MAY 20, 2015  
SCOTT L. TOLDNESS  
90218PLS  
EXPIRES: 06/30/2026

T.28S. R.4W. SEC. 35	RAW R.3W
T.28S. R.3W. SEC. 31	T28S T29S
T.29S. R.4W. SECS. 9, 3 & 11	9 10 11 12 7

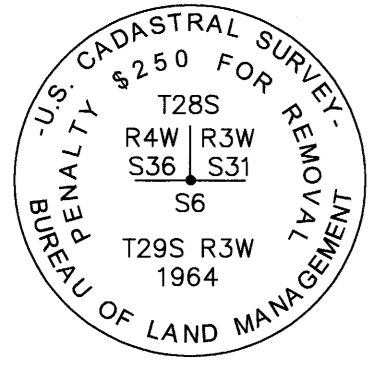


FY2024  
BOUNDARY LINE SURVEY - RBDO  
DRAWING: 24-033A BLM ROSEBURG ROS  
GLAHE & ASSOCIATES  
PROFESSIONAL LAND SURVEYORS  
303 Church Street  
Sandpoint, Idaho 83864  
208-265-4474  
Scale: 1"=600'  
Checked By: SLT  
Drawn By: SWO  
Plot Date: 2/13/2025  
Sheet: 2 of 4

M185-29B

207-58114

T. 28 S., R. 3 W.



Z-1 (100100)

PREVIOUS RENEWALS/SURVEYS, ETC.: (1881) - DCSO VOL. 13, PG. 5615 (1964) - DCSO VOL. 33, PG. 13783-84 (1979) - DCSO VOL. 43, PG. 16878 (1989) - DCSO C.S. FILE 64/1-5 (2016) - DCSO C.S. FILE 65/94-2

SCOTT TOLDNESS, PLS 90216, 2024 FOUND: (PER 1964) A 3/4" BLM BRASS CAP ON A 2 1/2" DIAM. IRON POST, 0.6' ABOVE GROUND, FROM WHICH: (PER 1964) A FIR, 55" DIAM., BEARS N48'E, 56.8 FT. DIST. WITH HEALED BLAZE & BT TAG, (PER 1989) A CEDAR, 17" DIAM., BEARS N69 1/2'E, 45.0 FT. DIST. WITH HEALED BLAZE & TAG, (PER 1989) A FIR, 27" DIAM., BEARS N15 3/4'W, 52.5 FT. DIST WITH HEALED BLAZE & TAG. (PER 1979) A DEAD AND DOWN FIR, 11" DIAM., BEARS N70'W, 15.8 FT. DIST. PAINTED AND ADDED BLANK BT TAG TO BACKS OF BTs. REPLACED TAG ON BT AT N48'E WITH UPDATED DIST.

T. 29 S., R. 3 W.

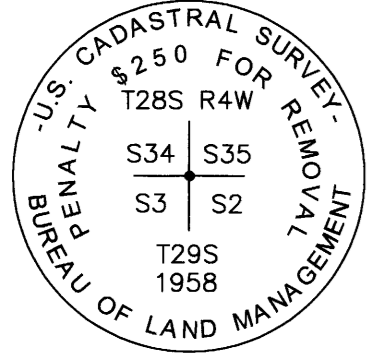


A-5 (200700)

PREVIOUS RENEWALS/SURVEYS, ETC.: (1881) - DCSO VOL. 15, PG. 6327 (1908) - DCSO VOL. 13, PG. 5562 (1976) - DCSO M59-77 (1979) - DCSO VOL. 43, PG. 16877 (2006) - DCSO M150-50

SCOTT TOLDNESS, PLS 90216, 2024 FOUND: (PER 1976) BRASS CAP ON A 1 1/2" DIAM. IRON POST, 0.5" ABOVE GROUND, FROM WHICH: (PER 1979) A CEDAR, 14" DIAM., BEARS S70 1/4'E, 37.3 FT. DIST., WITH HEALED BLAZE & TAG, (PER 2006) A CEDAR, 8" DIAM., BEARS S37 1/2'W, 20.8 FT. DIST., WITH HEALED BLAZE & TAG.

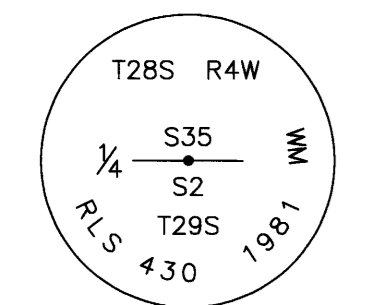
T. 28 S., R. 4 W.



Z-17 (500100)

PREVIOUS RENEWALS/SURVEYS, ETC.: (1854) - DCSO VOL. 13, PG. 5607-5608 (1881) - DCSO VOL. 13, PG. 5614 (1958) - DCSO VOL. 29, PG. 12228 (1981) - DCSO ROLL RM 3-54 (2014) - DCSO VOL. 13, PG. 58, PG. 23194-5

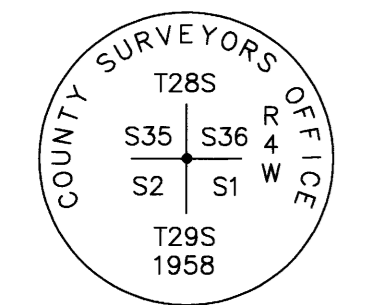
SCOTT TOLDNESS, PLS 90216, 2024 FOUND: (PER 1957) A 3/4" BLM BRASS CAP ON A 2 1/2" DIAM. IRON POST, FLUSH W/ GROUND, FROM WHICH: (PER 1881) A FIR SNAG, 14" DIAM., BEARS S60'W, 27.7 FT. DIST. WITH OLD SCRIBE & BLAZE, (PER 1958) A FIR, 29" DIAM., BEARS N29 1/2'E, 7.9 FT. DIST. WITH HEALED BLAZE & K-TAG, (PER 1958) A CEDAR, 41" DIAM., BEARS S81 1/2'W (S80 1/2'W), 37.3 FT. DIST. WITH HEALED BLAZE & ILLEGIBLE BT TAG, (PER 1958) A FIR STUMP, 29" DIAM., BEARS N66 1/2'W, 42.9 FT. DIST. WITH ILLEGIBLE TAGS (PER 1981) A DEAD RED CEDAR, 15" DIAM., BEARS S26 1/2'E (S27'E), 52.0 FT. DIST. WITH HEALED BLAZE AND BT TAG, (PER 2014) A DEAD & DOWN FIR, 11" DIAM., BEARS N67 1/2'W, 13.4 FT. DIST. WITH SEMI-HEALED BLAZE AND BT TAG. SET: A FIR, 32" DIAM., BEARS S82 1/2'E, 6.9 FT. DIST. TO A NAIL IN LEFT SIDE CENTER, SCRIBED T29SR4WS2BT, WITH BT TAG, LS WASHER 90216, AND MAG NAIL AT BOTTOM OF SCRIBE, A FIR, 27 INS. DIAM., BEARS N87'W, 35.3 FT. DIST. TO A NAIL IN LEFT SIDE CENTER, SCRIBED T28SR4WS34BT, WITH BT TAG, LS WASHER 90216, AND MAG NAIL AT BOTTOM OF SCRIBE. PAINTED BTs AND ADDED DISTANCE TO EXISTING BTs.



Z-19 (540100)

PREVIOUS RENEWALS/SURVEYS, ETC.: (1854) - DCSO VOL. 13, PG. 5608 (1881) - DCSO VOL. 13, PG. 5614 (1981) - DCSO RM 3-54 (2011) - DCSO M157-39

SCOTT TOLDNESS, PLS 90216, 2024 FOUND: (PER 1981) BRASS CAP BY RLS 430, ON A 2" DIAM. IRON PIPE, 0.6 FT. ABOVE GROUND, FROM WHICH: (PER 1981) A FIR, 16" DIAM., BEARS N45'E, 11.2 FT. DIST. TO A NAIL AT LEFT SIDE CENTER, WITH HEALED BLAZE AND BT TAG. (RECORD CALLS N45'E, 10.8 FT. DIST., BT TAG READS S45'W, 11.2 FT. DIST, MATCHING 1981/82 RECORD) (PER 1981) A FIR, 17" DIAM., BEARS S47 3/4'E (S49'E), 11.9 FT. DIST. WITH HEALED BLAZE AND K-TAG, A FIR, 31" DIAM., BEARS N28 1/2'W, 46.3 FT. DIST. TO A NAIL AT RIGHT SIDE CENTER, WITH HEALED BLAZE AND ILLEGIBLE K-TAG, (PER 1881) A ROTTED CEDAR STUMP, 39" DIAM., BEARS S9'W, 27.8 FT. DIST WITH BT TAG. A 2 1/2" DIAM. IRON PIPE (UNRECORDED), BEARS NORTHEAST, 1.4 FT. DIST. ADDED NEW BT TAGS & NAILS (PER ABOVE LOCATIONS) TO BTs.

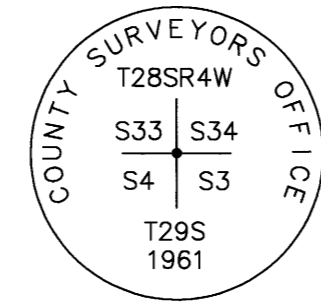


Z-21 (600100)

PREVIOUS RENEWALS/SURVEYS, ETC.: (1854) - DCSO VOL. 13, PG. 5608 (1881) - DCSO VOL. 13, PG. 5615 (1958) - DCSO C.S. FILE NO. 49/67-2 (1964) - DCSO VOL. 33, PG. 13784-85 (2006) - DCSO VOL. 56, PG 22315 & PLAT T29-4 2011-3 (2011) - DCSO M157-39 (2020) - DCSO M177-20

SCOTT TOLDNESS, PLS 90216, 2024 FOUND: (PER 1958) BRASS CAP ON A 1 1/2" DIAM. IRON POST, 1 FT. ABOVE GROUND, FROM WHICH: (PER 1958) A FIR, 45" DIAM., BEARS N4'W, 15.5 FT. DIST WITH HEALED BLAZE AND TAG (PER 1964) A FIR, 20" DIAM., BEARS N61 1/2'E, 64.7 FT. DIST. WITH HEALED BLAZE AND TAG, (PER 1958) A CEDAR, 26" DIAM, BEARS S2'E, 17.2 FT. DIST. WITH HEALED BLAZE AND TAG, (PER 2006) A FIR, 8" DIAM., BEARS S62 1/2'W, 28.0 FT. DIST. W/ HEALED BLAZE & TAG, (PER 1958) AN OLD ROTTED STUMP BEARS N65'E, 7.5 FT. DIST. WITH SEMI-VISIBLE SCRIBE AND ILLEGIBLE BT TAG, A DOWN ROTTED TREE BEARS APPROXIMATELY WEST, 5 FT. DIST., WITH ILLEGIBLE BT TAG.

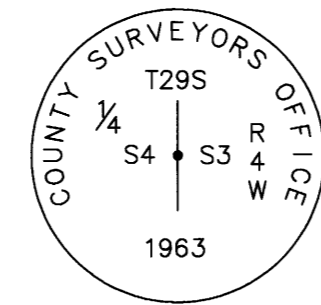
T. 29 S., R. 4 W.



A-13 (400700)

PREVIOUS RENEWALS/SURVEYS, ETC.: (1854) - DCSO VOL. 13, PG. 5607 (1881) - DCSO VOL. 13, PG. 5613-14 (1922) - DCSO M2-4, VOL. 3, PG. 113 (1961) - DCSO C.S. FILE NO. 49/67-21 (1993) - DCSO M118-13 (1999) - DCSO M133-18 A & B (2006) - DCSO 2007-0008 (2007) - DCSO M153-18

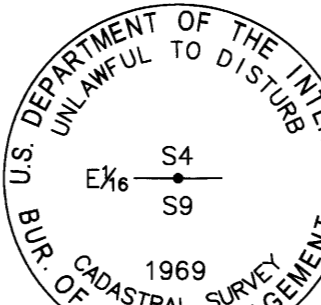
SCOTT TOLDNESS, PLS 90216, 2024 FOUND: (PER 1961) A 2 1/2" BRASS CAP ON A 1 1/2" DIAM. IRON PIPE, 1.0' ABOVE GROUND (A 3/4" DIAM. IRON PIPE, 1 FT. TALL ALONG THE N.E. SIDE LEANS N.E.), FROM WHICH: (PER 1961) A FIR, 19" DIAM., BEARS S85'E (S82 1/2'E), 24.4 FT. DIST. WITH HEALED BLAZE, (PER 1961) A FIR, 42" DIAM., BEARS S51 1/2'E, 30.2 FT. DIST. WITH HEALED BLAZE, TAG "CS 8/61," (PER 1922) A FIR STUMP, 48" DIAM., 4.5 FT. TALL, BEARS S68'W, 18.6 FT. (17.0 FT.) DIST. WITH HEALED BLAZE, TAG "CS 57," SET: A FIR, 7" DIAM., BEARS S44 1/2'W, 36.1 FT. DIST. TO A NAIL IN N.W. FACE, SCRIBED T29SR4WS4BT W/ LS WASHER BELOW, TAG "90216 7/25/24." A MAPLE, 11" DIAM., BEARS N9'E, 7.8 FT. DIST. TO A NAIL IN E. FACE, SCRIBED T28SR4WS34BT W/ LS WASHER BELOW & TAG "90216," A LAUREL, 4" DIAM., BEARS N90'W, 11.4 FT. DIST. TO AN LS WASHER IN N. FACE, SCRIBED "X" AT BREAST HEIGHT, AND TAG "90216." ADDED POST S10'W, 5 FT., & EAST, 5 FT., WITH BOUNDARY SIGNS.



C-13 (400640)

PREVIOUS RENEWALS/SURVEYS, ETC.: (1881) - DCSO VOL. 15, PG. 6395 (1922) - DCSO M2-4, VOL. 3, PG. 115 (1963) - DCSO C.S. FILE 52/126-119 (1993) - DCSO M118-13 (2024) - DCSO M184-31

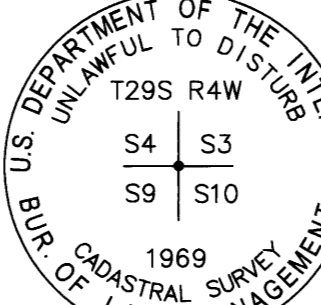
SCOTT TOLDNESS, PLS 90216, 2024 FOUND: (PER 1963) A 2 1/2" BRASS CAP ON A 1 1/2" DIAM. IRON PIPE, 0.9 FT. ABOVE GROUND, FROM WHICH: A STEEL POST BEARS S10'E, 2 FT. DIST., A FIR, 5" DIAM., BEARS S9'E, 5.3 FT. DIST., WITH SCRIBE & TAG "CM BM 6/23 DAVID EDWARDS LAND SURVEYING," (1922) A FIR STUMP, 33" DIAM., BEARS N24 1/2'W, 22.9 FT. DIST., WITH HEALED BLAZE & TAG "K MAC A THOMSON 11/10/54," (PER 1963) A FIR STUMP, 28" DIAM., BEARS S3'E, 28.0 FT. DIST., WITH MOSTLY HEALED FACE. SET: A FIR, 7" DIAM., BEARS N19 1/2'E, 28.4 FT. DIST. TO A NAIL IN N.E. FACE, SCRIBED "1/4S3BT" W/ LS WASHER BELOW TAG BY 90216 7/26/24, A MAPLE, 10" DIAM., BEARS S41 1/2'W, 38.9 FT. DIST. TO A NAIL IN N.W. FACE, SCRIBED "1/4S4BT" W/ LS WASHER BELOW TAG ON FRONT AND BACK BY 90216 7/26/24, A YEW, 20" DIAM., BEARS N41 3/4'W, 4.5 FT. DIST TO A NAIL IN N.E. FACE, SCRIBED "1/4S4BT" W/ LS WASHER BELOW TAGS ON FRONT AND BACK BY 90216 7/26/24. ADDED POST S10'W, 5 FT. AND N10'E, 5 FT. ADDED TAG, NAIL, AND PAINT TO THE 5" FIR.



E-12 (360600)

PREVIOUS RENEWALS/SURVEYS, ETC.: (1959) - DCSO C.S. FILE 42/345-3 (1969) - DCSO VOL. 39, PG. 15890 (2024) - DCSO M184-31

SCOTT TOLDNESS, PLS 90216, 2024 FOUND: (PER 1969) A 3/4" BLM BRASS CAP ON A 2 1/2" DIAM. IRON POST, 0.6 FT. ABOVE GROUND, FROM WHICH: (PER 1959) A CEDAR, 58" DIAM., BEARS N52 1/4'E, 26.4 FT. (40 LKS.) DIST. TO A NAIL AT FRONT RIGHT CENTER, WITH HEALED BLAZE & BURN TAG BY MARKHAM 1959, (PER 1959) A FIR STUMP, 64" DIAM., 4 FT. TALL, BEARS S47'W, 31.0 FT. (47 LKS.) DIST., WITH BLM TAG, (PER 1959) A MAPLE, 19" DIAM., BEARS N54 1/2'W, 15.8 FT. DIST. TO A NAIL AT RIGHT SIDE CENTER, WITH HEALED BLAZE, SET: A FIR, 13" DIAM., BEARS S56 1/4'E, 11.9 FT. DIST. TO A NAIL IN S.W. FACE, SCRIBED "E1/16S9BT" W/ LS WASHER BELOW, TAG BY 90216 8/14/24, ADDED PAINT, TAGS, & NAILS (PER ABOVE LOCATIONS) TO BTs. ADDED PAINT & TAG TO FOUND STUMP. ADDED POST SOUTH, 5 FT., AND S82'E, 5 FT.

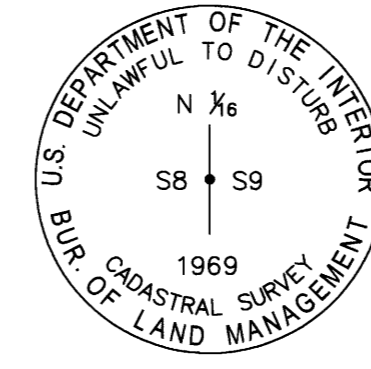


E-13 (400600)

PREVIOUS RENEWALS/SURVEYS, ETC.: (1881) - DCSO VOL. 15, PG. 6394 (1950) - DCSO C.S. FILE 40/252 (1959) - DCSO C.S. FILE 42/345-5 (1969) - DCSO VOL. 39, PG. 15877-78 (2005) - DCSO M147-66 (2024) - DCSO M184-31

SCOTT TOLDNESS, PLS 90216, 2024 FOUND: (PER 1969) A 3/4" BLM BRASS CAP ON A 2 1/2" DIAM. IRON POST, 0.4 FT. ABOVE GROUND WITH AN ALUMINUM POST ALONGSIDE AND A POST 2 FT. NORTH, FROM WHICH: (PER 1881) A FIR, 38" DIAM., BEARS N36'E, 19.8 FT. DIST., WITH HACKED "X BT" AND TAG BY CM BM 6/23, (PER 1959) A DEAD STANDING MADRONE, 11" DIAM., BEARS S73'W, 26.1 FT. (35 1/2 LKS.) DIST., WITH TAG BY CS 4/63, (PER 1969) A FIR, 28" DIAM., BEARS N11'W, 57.7 FT. DIST., WITH HEALED BLAZE AND TAG BY AJG 7/28/69, (PER 1959) A FIR STUMP, 20" DIAM., 4.5 FT. TALL, BEARS S26 1/4'E, 14.5 FT. (22 LKS.) DIST., (PER 1959) A MADRONE STUMP, 22" DIAM., 2 FT. TALL, BEARS N9 1/2'E, 35.9 FT. (54 1/2 LKS.) DIST., (PER 1881) A SHATTERED CEDAR, 2 FT. TALL, BEARS S42'W, 11.2 FT. (17 LKS.) DIST., BURN T PIECES LYING ABOUT. SET: A FIR, 24" DIAM., BEARS S90'E, 96.1 FT. DIST. TO A NAIL IN S. FACE, SCRIBED "T29SR4WS10BT" W/ LS WASHER BELOW, TAGS BY 80216 7/24/24, A FIR, 11" DIAM., BEARS S68 1/2'W, 27.0 FT. DIST. TO A NAIL IN N. FACE, SCRIBED "T29SR4WS9BT" W/ LS WASHER BELOW, TAGS BY 90216 7/24/24, PAINTED EXISTING BTs, REPLACED TAGS, AND ADDED NAILS TO S.E. & E. FACES. PAINTED AND TAGGED STUMPS AND STANDING DEAD MADRONE. ADDED POST WEST, 5 FT., AND N10'E, 5 FT., WITH BOUNDARY SIGNS.

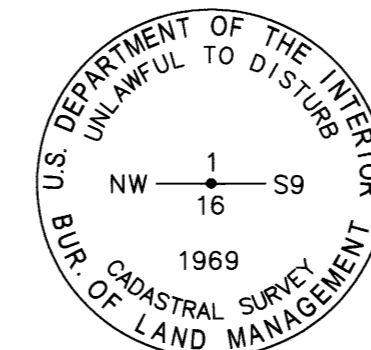
T. 29 S., R. 4 W.



F-9 (300560)

PREVIOUS RENEWALS/SURVEYS, ETC.: (1969) - DCSO VOL. 39, PG. 15888-15889

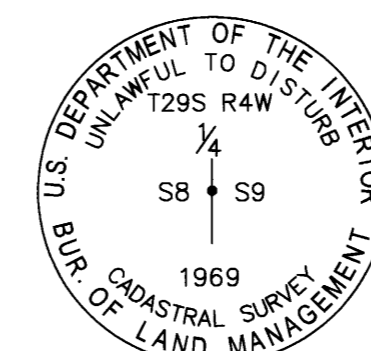
SCOTT TOLDNESS, PLS 90216, 2024 FOUND: (PER 1969) A 3/4" BLM BRASS CAP ON A 2 1/2" DIAM. IRON POST, 3" ABOVE GROUND, WITH 6' T-POST, EAST, 0.3 FT., FROM WHICH: (PER 1969) A HEMLOCK, 22" DIAM., BEARS EAST, 12.9 FT. (19 1/2 LKS) DIST. TO A NAIL AT RIGHT SIDE CENTER, WITH HEALED BLAZE & TAG, (PER 1969) A FIR STUMP, 20" DIAM., BEARS N37'W, 35.4 FT. (55 LKS.) DIST. SET: AN ALDER, 19" DIAM., BEARS N60 1/2'W, 75.0 FT. DIST. TO A NAIL IN E. SIDE CENTER, SCRIBED "N1/16S8BT," A FIR, 23" DIAM., BEARS N39 1/4'W, 64.6 FT. DIST. TO A NAIL IN E. SIDE CENTER, SCRIBED "N1/16S8BT." ADDED TAG, NAILS (PER ABOVE LOCATIONS), AND PAINT TO BTs.



F-10 (320560)

PREVIOUS RENEWALS/SURVEYS, ETC.: (1969) - DCSO VOL. 39, PG. 15906 - 15907

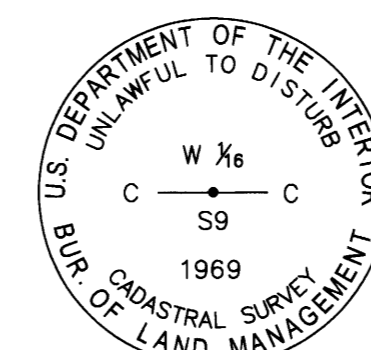
SCOTT TOLDNESS, PLS 90216, 2024 FOUND: (PER 1969) A 3/4" BLM BRASS CAP ON A 2 1/2" DIAM. IRON POST, 0.3 FT. ABOVE GROUND, FROM WHICH: (PER 1969) A FIR, 40" DIAM., BEARS S42 1/4'E (S45'E), 5.3 FT. DIST., WITH HEALED BLAZE & TAG, SET: A FIR, 15" DIAM., BEARS N87 1/2'E, 35.1 FT. DIST. TO A NAIL IN LEFT SIDE, BLAZED AND SCRIBED "NW1/16S9BT," W/ LS WASHER PLS 90216, A FIR, 23" DIAM., BEARS S57 1/4'W, 42.1 FT. DIST. TO A NAIL AT RIGHT SIDE CENTER, BLAZED AND SCRIBED "NW1/16S9BT," W/ LS WASHER PLS 90216.



G-9 (300540)

PREVIOUS RENEWALS/SURVEYS, ETC.: (1881) - DCSO VOL. 15, PG. 6396 (1899) - DCSO VOL. 15, PG. 6414 (1950) - DCSO C.S. FILE 40/252 (1969) - DCSO VOL. 39, PG. 15888

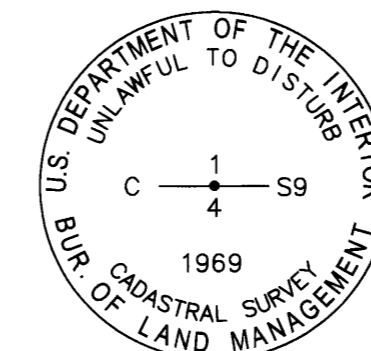
SCOTT TOLDNESS, PLS 90216, 2024 FOUND: (PER 1969) A 3/4" BLM BRASS CAP ON A 2 1/2" DIAM. IRON POST, 0.3 FT. ABOVE GROUND, FROM WHICH: (PER 1969) A CEDAR, 18" DIAM., BEARS N70 1/2'E (N61'E), 15.8 FT. (24 LKS.) DIST. TO A NAIL, WITH HEALED BLAZE, (PER 1969) A CEDAR, 17" DIAM., BEARS S61'W, 7.9 FT. (12 LKS.) DIST. TO A NAIL, WITH HEALED BLAZE. ADDED: PAINT, SNOW BLAZE, NAILS, AND LS WASHER 90216 AT RIGHT SIDE CENTER OF BTs.



G-10 (320540)

PREVIOUS RENEWALS/SURVEYS, ETC.: (1969) - DCSO VOL. 39, PG. 15904-15905

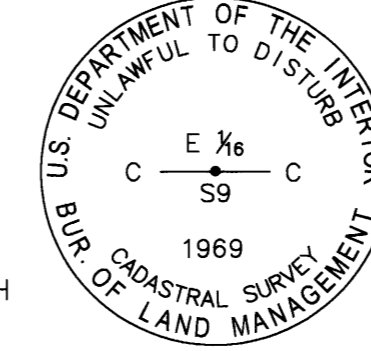
SCOTT TOLDNESS, PLS 90216, 2024 FOUND: (PER 1969) A 3/4" BLM BRASS CAP ON A 2 1/2" DIAM. IRON POST, 0.6 FT. ABOVE GROUND, FROM WHICH: (PER 1969) A MAPLE, 16" DIAM., BEARS N45 1/4'E (N47'E), 50.5 FT. DIST., WITH HEALED BLAZE & ILLEGIBLE BT TAG, (PER 1969) A CEDAR, 28" DIAM., BEARS S0 3/4'W (S1 1/2'W), 22.8 FT DIST., WITH HEALED BLAZE & TAG. ADDED: BT TAGS AND NAILS IN LEFT SIDE CENTER OF BTs.



G-11 (340540)

PREVIOUS RENEWALS/SURVEYS, ETC.: (1969) - DCSO VOL. 39, PG. 15903

SCOTT TOLDNESS, PLS 90216, 2024 FOUND: (PER 1969) A 3/4" BLM BRASS CAP ON A 2 1/2" DIAM. IRON POST, 1.0 FT. ABOVE GROUND, FROM WHICH: (PER 1969) A FIR, 47" DIAM., BEARS S8'W, 73.5 FT. (109 LKS.) DIST., WITH HEALED BLAZE, (PER 1969) A DEAD STANDING YEW, 18" DIAM., BEARS N30'W, 59.5 FT. (93 LKS.) DIST. SET: A FIR, 20" DIAM., BEARS S80'E, 25.7 FT. DIST. TO A NAIL IN RIGHT SIDE CENTER, SCRIBED "C1/4S9BT." A FIR, 27" DIAM., BEARS S66 1/4'W, 35.8 FT. DIST. TO A NAIL IN LEFT SIDE CENTER, SCRIBED "C1/4S9BT." ADDED NAILS (PER ABOVE LOCATIONS) AND LS WASHER 90216 TO BTs.



G-12 (360540)

PREVIOUS RENEWALS/SURVEYS, ETC.: (1969) - DCSO VOL. 39, PG. 15904

SCOTT TOLDNESS, PLS 90216, 2024 FOUND: (PER 1969) A 3/4" BLM BRASS CAP ON A 2 1/2" DIAM. IRON POST, 1.0 FT. ABOVE GROUND, LEANING S., FROM WHICH: (PER 1969) A FIR STUMP, 33" DIAM., 5.5 FT. TALL, BEARS N30'E, 48.2 FT. DIST., WITH TAG BY OC 8/26/69, (PER 1969) A FIR STUMP, 36" DIAM., 5.5 FT. TALL, BEARS S60'E, 69.8 FT. (99 LKS.) DIST., WITH TAG BY OC 8/26/69, SET: A FIR, 14" DIAM., BEARS S65'E, 22.0 FT. DIST. TO A NAIL AT SIDE CENTER, SCRIBED "CE1/16S9BT," W/ LS WASHER BELOW, TAG BY 90216 9/17/24, A CEDAR, 12" DIAM., BEARS N11'W, 24.4 FT. DIST. TO A NAIL, SCRIBED "CE1/16S9BT," W/ LS WASHER BELOW, TAG BY 90216 9/17/24, ADDED POST NORTH, 5 FT., AND SOUTH, 5 FT., WITH BOUNDARY SIGNS.

FILED Date: 1-13-2025 By: S. Sandpoint, Idaho 83864

DOUGLAS COUNTY SURVEYOR

REGISTERED PROFESSIONAL LAND SURVEYOR

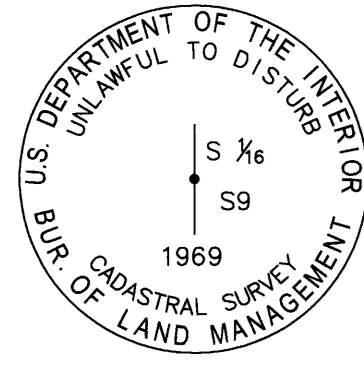
Signature of Scott L. Toldness

EXPIRES: 06/30/2026

FY2024 BOUNDARY LINE SURVEY - RBDO DRAWING: 24-033A BLM ROSEBURG ROS GLAHE & ASSOCIATES PROFESSIONAL LAND SURVEYORS 303 Church Street Sandpoint, Idaho 83864 208-266-4474 Scale: N/A Checked By: SLT Drawn By: SWO Plot Date: 2/13/2025 Sheet: 3 of 4

M185-29C

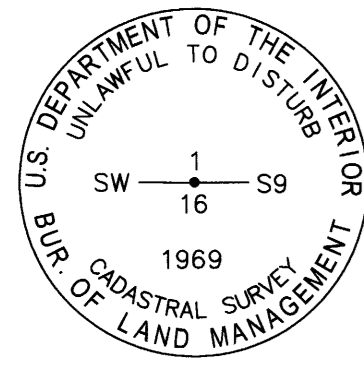
T. 29 S., R. 4 W.



(H-9) (300520)

PREVIOUS RENEWALS/SURVEYS, ETC.: (1969) - DCSO VOL. 39, PG. 15888

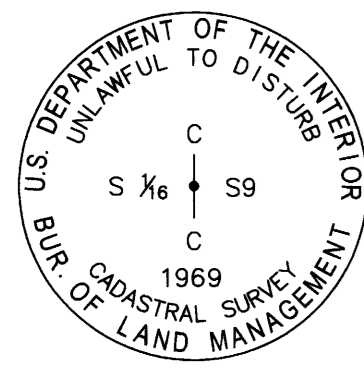
SCOTT TOLDNESS, PLS 90216, 2024 FOUND: (PER 1969) A 3/4" BLM BRASS CAP ON 2 1/2" DIAM. IRON POST, FROM WHICH: (PER 1969) A FIR, 16" DIAM., BEARS N45°E, 45.5 FT. (64 1/2 LKS.) DIST., WITH HEALED BLAZE, (PER 1969) A FIR, 18" DIAM., BEARS S80°E, 15.5 FT. (23 1/2 LKS.) DIST., WITH HEALED BLAZE. ADDED: PAINT, TAGS, NAILS AT RIGHT SIDE CENTER, AND LS WASHER 90216 TO BTs.



(H-10) (320520)

PREVIOUS RENEWALS/SURVEYS, ETC.: (1969) - DCSO VOL. 39, PG. 15905-15906

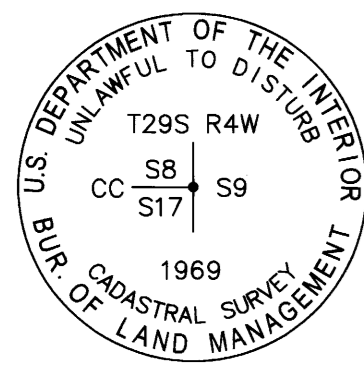
SCOTT TOLDNESS, PLS 90216, 2024 FOUND: (PER 1969) A 3/4" BLM BRASS CAP ON 2 1/2" DIAM. IRON POST, 0.6 FT. ABOVE GROUND, WITH 6" T-POST, N45°W, 0.3 FT., FROM WHICH: (PER 1969) A CEDAR, 29" DIAM., BEARS S61 1/4°E, 23.8 FT. (36 1/2 LKS.) DIST. TO A NAIL IN LEFT SIDE CENTER, WITH HEALED BLAZE, (PER 1969) A CEDAR, 14" DIAM., BEARS N37 3/4°W, 19.8 FT. (30 LKS.) DIST. TO A NAIL IN RIGHT SIDE CENTER, WITH HEALED BLAZE. ADDED: PAINT, SNOW BLAZE, NAILS (PER ABOVE LOCATIONS), TAGS & LS WASHER 90216 TO BTs.



(H-11) (340520)

PREVIOUS RENEWALS/SURVEYS, ETC.: (1969) - DCSO VOL. 39, PG. 15903

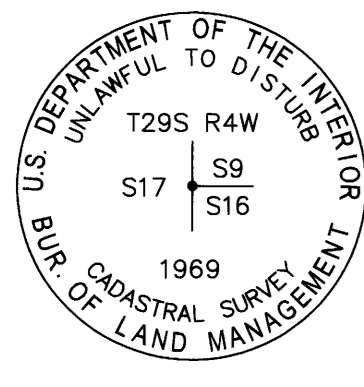
SCOTT TOLDNESS, PLS 90216, 2024 FOUND: (PER 1969) A 3/4" BLM BRASS CAP ON 2 1/2" DIAM. IRON POST, FLUSH WITH GROUND, WITH 6" T-POST, EAST, 3", FROM WHICH: (PER 1969) A FIR STUMP, 14" DIAM., BEARS S62°E, 5.9 FT. (9 LKS.) DIST., WITH HEALED BLAZE & TAG, (PER 1969) A ROTTED FIR STUMP, 19" DIAM., BEARS S89 1/2°W, 35.0 FT. (53 LKS.) DIST., VISIBLE SCRIBE. SET: A FIR, 16" DIAM., BEARS N59 1/4°E, 14.7 FT. DIST. TO A NAIL IN SOUTH SIDE CENTER, SCRIBED "C-S1/16S9BT," W/ LS WASHER 90216, A MADRONE, 16" DIAM., BEARS S5 1/2°W, 9.5 FT. DIST. TO A NAIL IN EAST SIDE CENTER, SCRIBED "C-S1/16S9BT," W/ LS WASHER 90216, A CEDAR, 21" DIAM., BEARS S83 1/2°W, 36.5 FT. DIST. TO A NAIL IN NORTH SIDE CENTER, SCRIBED "C-S1/16S9BT," W/ LS WASHER 90216.



(J-9) (300506) CC SECS. 8 & 17

PREVIOUS RENEWALS/SURVEYS, ETC.: (1899) - DCSO VOL. 15, PG. 6410 (1957) - DCSO C.S. FILE 42/298-1 (1963) - DCSO C.S. FILE 52/126-123 (1973) - DCSO C.S. FILE 59/30 (1977) - DCSO VOL. 39, PG. 15887 (1978) - DCSO C.S. FILE 59/46-57 (1986) - DCSO VOL. 48, PG. 18509-10 (2015) - DCSO M166-38 A-D

SCOTT TOLDNESS, PLS 90216, 2024 FOUND: (PER 1977) A 3/4" BLM BRASS CAP ON 2 1/2" DIAM. IRON POST, FLUSH WITH GROUND, WITH BENT 6" T-POST, EAST, 0.5 FT., FROM WHICH: (PER 1963) A FIR, 36" DIAM., BEARS S12 3/4°W, 46.2 FT. (70 LKS.) DIST. TO A NAIL IN RIGHT SIDE CENTER, WITH HEALED BLAZE & SNOW BLAZE, AND TAG, (PER 1899) A FIR, 38" DIAM., BEARS S29 1/4°W, 21.1 FT. (32 LKS.) DIST. TO A NAIL IN RIGHT SIDE CENTER, WITH HEALED BLAZE & SNOW BLAZE, AND TAG. (PER 1957) A FIR STUMP, 18" DIAM., BEARS N28 1/4°E, 52.8 FT. DIST. WITH TAG, SET: A FIR, 13" DIAM., BEARS N19°W, 17.05 FT. DIST. TO A NAIL IN RIGHT SIDE CENTER, SNOW BLAZED AND SCRIBED "T29SR4WS8BT." ADDED PAINT, NAILS (PER ABOVE LOCATIONS), NEW TAGS AND LS WASHER 90216 TO ALL BTs.

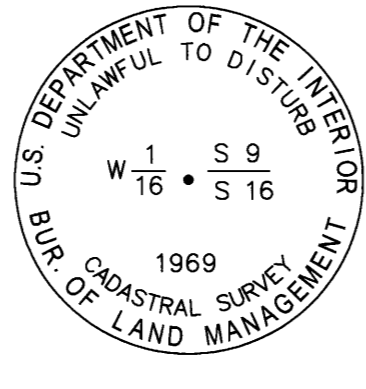


(J-9) (300500) CC SECS. 9 & 16

PREVIOUS RENEWALS/SURVEYS, ETC.: (1854) - DCSO VOL. 15, PG. 6377 (1881) - DCSO VOL. 15, PG. 6395-96 (1899) - DCSO VOL. 15, PG. 6409 (1925) - DCSO VOL. 3, PG. 229 (1950) - DCSO C.S. FILE 40/252 (1957) - DCSO C.S. FILE 42/298-2 (1963) - DCSO C.S. FILE 52/126-123 (1977) - DCSO VOL. 39, PG. 15886-87 (1978) - DCSO C.S. FILE 59/46-58 (1987-1988) - DCSO VOL. 48, PG. 18508-18509

SCOTT TOLDNESS, PLS 90216, 2024 FOUND: (PER 1977) A 3/4" BLM BRASS CAP ON A 2 1/2" DIAM. IRON POST, 0.6 FT. ABOVE GROUND, FROM WHICH: (PER 1978) A FIR, 15" DIAM., BEARS N36°E, 10.8 FT. DIST., WITH HEALED BLAZE AND BT TAG, (PER 1854) A MADRONE STUMP, 15 FT. TALL, BEARS S85°E, 16.5 FT. DIST., WITH HEALED BLAZE AND BT TAG, (PER 1925) A FIR, 24" DIAM., BEARS S43 1/4°E, 28.4 FT. DIST., WITH HEALED BLAZE, BT TAG, & K-TAG, (PER 1925) A FIR, 35" DIAM., BEARS S8 1/2°W, 23.2 FT. DIST., WITH HEALED BLAZE AND BT TAG, (PER 1957) A MADRONE, 30" DIAM., BEARS S14 3/4°W, 91.3 FT. DIST., WITH HEALED BLAZE, (PER 1978) AN IRON ROD, 5/8" DIAM., BEARS S23°E, 60.98 FT. DIST., ADDED: PAINT, NAILS AT SIDE CENTER, AND BT TAGS TO LIVING BTs.

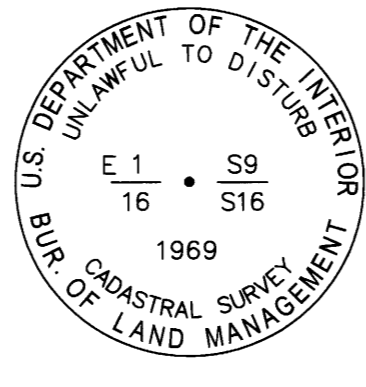
T. 29 S., R. 4 W.



(J-10) (320500)

PREVIOUS RENEWALS/SURVEYS, ETC.: (1925) - DCSO VOL. 3, PG. 229 (1938) - DCSO CS FILE 16/4 AND M3-67 (1969) - DCSO VOL. 39, PG. 15885-15886

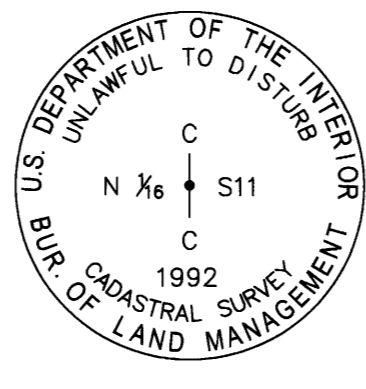
SCOTT TOLDNESS, PLS 90216, 2024 FOUND: (PER 1969) A 3/4" BLM BRASS CAP ON A 2 1/2" DIAM. IRON POST, 0.4 FT. ABOVE GROUND, WITH 6" T-POST, WEST, 0.3 FT., AND 6" U-POST, EAST, 1.0 FEET, FROM WHICH: (PER 1925) A FIR, 56" DIAM., BEARS S8 1/2°E (S13°E 1969), 36.3 FT. (55 LKS.) DIST. TO A NAIL IN LEFT SIDE CENTER, WITH HEALED BLAZE, SET: A CEDAR, 10" DIAM., BEARS N21 1/4°E, 40.0 FT. DIST. TO A NAIL IN RIGHT SIDE CENTER, SCRIBED "W1/16S9BT," A CEDAR, 9" DIAM., BEARS S85 1/4°E, 66.2 FT. DIST. TO A NAIL IN RIGHT SIDE CENTER, SCRIBED "W1/16S16BT." ADDED PAINT, SNOW BLAZE, NAILS (PER ABOVE LOCATIONS), TAGS, AND LS WASHER 90216 TO BTs.



(J-12) (360500)

PREVIOUS RENEWALS/SURVEYS, ETC.: (1938) - DCSO CS FILE 16/4 AND M3-67 (1969) - DCSO VOL. 39, PG. 15884

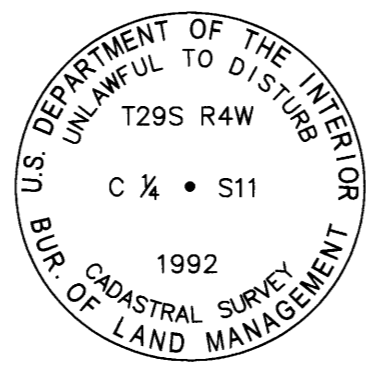
SCOTT TOLDNESS, PLS 90216, 2024 FOUND: (PER 1969) A 3/4" BLM BRASS CAP ON A 2 1/2" DIAM. IRON POST, 0.4 FT. ABOVE GROUND, AT A N. & E. FENCE INTERSECTION, WITH A 3/4" BLM BRASS POST BEARING WEST, 2 FT., FROM WHICH: (PER 1969) A FIR, 29" DIAM., BEARS N29°E, 38.2 FT. (SLOPE) DIST., WITH HEALED BLAZE & TAG BY OBC 8/29/69, (PER 1969) A FIR, 23" DIAM., BEARS SOUTH, 7.3 FT. DIST., WITH HEALED BLAZE & TAG BY OBC 8/29/69. PAINTED BANDS & BLAZES, ADDED NAILS AT SIDE CENTER, AND ADDED BLANK TAG ON REVERSE. ADDED POST NORTH, 5 FT., AND EAST 5 FT., WITH BOUNDARY SIGNS.



(F-19) (540500)

PREVIOUS RENEWALS/SURVEYS, ETC.: (1983) - DCSO M94-61 AND C.S. FILE 58/270 (1992) - DCSO VOL. 52, PG. 19814

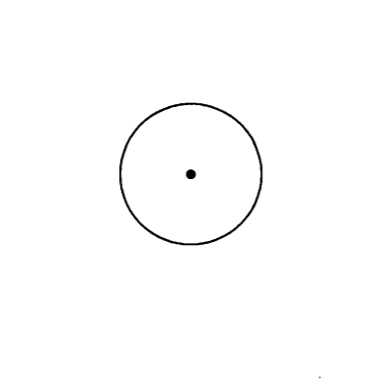
SCOTT TOLDNESS, PLS 90216, 2024 FOUND: (PER 1992) A 3/4" BLM BRASS CAP ON 2 1/2" DIAM. STAINLESS STEEL POST, FROM WHICH: (PER 1992) A FIR, 25" DIAM., BEARS N55 1/2°E, 25.1 FT. DIST., WITH HEALED BLAZE, (PER 1992) A FIR, 24" DIAM., BEARS S82°W, 17.2 FT. DIST., WITH HEALED BLAZE. (PER 1983) A BRASS CAP ON A 1 1/2" DIAM. IRON PIPE MARKED CN 1/16 S11 LS 866 1983, BEARS N85°W 3.65 FT.



(G-19) (540540)

PREVIOUS RENEWALS/SURVEYS, ETC.: (1983) - DCSO M94-61 AND C.S. FILE 58/270 (1992) - DCSO VOL. 52, PG. 19812-19813

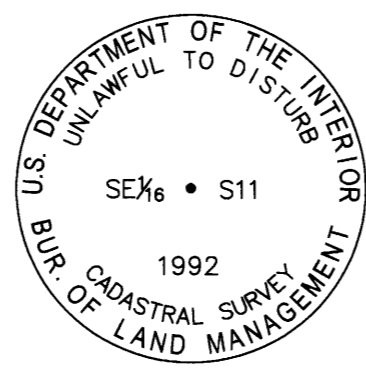
SCOTT TOLDNESS, PLS 90216, 2024 FOUND: (PER 1992) A 3/4" BLM BRASS CAP ON A 2 1/2" DIAM. STAINLESS STEEL POST, 14" BELOW SURFACE OF E. SHOULDER OF LOUIS CREEK RD, FROM WHICH: (PER 1992) A 3/4" BLM BRASS CAP ON A 2 1/2" DIAM. STAINLESS STEEL POST BEARS N45 1/2°E, 13.2 FT. (20 LKS.) DIST., MARKED RM C 1/4 S11 13.20 FT. AND ARROW POINTING TO THE CORNER, (PER 1992) A CEDAR, 23" DIAM., BEARS S81 1/2°E (FROM THE BLM MONUMENT), 50.8 FT. (77 LKS.) DIST., (PER 1983) AN IRON PIPE WITH A BRASS CAP MKD. T29S R4W C 1/4 WC LS866, BEARS S88°41'41"E (FROM THE BLM MONUMENT), 17.95' FT. (38 LKS.) DIST., (PER 1983) AN IRON PIPE WITH AN ILLEGIBLE BRASS CAP, BEARS N10°11'50"W (N1°E) (FROM THE BLM MONUMENT), 36.30 FT. (53 LKS.) DIST.



(H-19) (540520) C-S 1/2 SEC. 11

PREVIOUS RENEWALS/SURVEYS, ETC.: (1992) - DCSO VOL. 52, PG. 19812 (2011) - DCSO M157-41

SCOTT TOLDNESS, PLS 90216, 2024 FOUND: YELLOW PLASTIC CAP MARKED "LANDMARK PLS 2287" ON A 5/8" DIAM. IRON ROD, FROM WHICH: (PER 1992) A FIR STUMP BEARS S67°W, 340.9 FT. (517 LKS.) DIST., (PER 1992) A CEDAR, 36" DIAM., BEARS N68 1/2°W, 294.8 FT. (447 LKS.) DIST. (NO EVIDENCE OF BLM RM BRASS CAP S70°W, 80 LKS.) SET: AN ALUMINUM POST, 5.5 FT. LONG, BEARS S9°W, 2.0 FT. DIST. WITH LINE/BT TAG, A FIR, 12" DIAM., BEARS S88 1/2°E, 188.5 FT. DIST., SCRIBED "CS1/16S11BT" WITH TAG BY 90216.

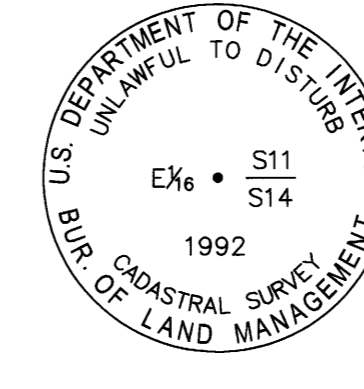


(H-20) (560520)

PREVIOUS RENEWALS/SURVEYS, ETC.: (1992) - DCSO VOL. 52, PG. 19817 (2011) - DCSO M157-41

SCOTT TOLDNESS, PLS 90216, 2024 FOUND: (PER 1992) A 3/4" BLM BRASS CAP ON 2 1/2" DIAM. STAINLESS STEEL POST, FROM WHICH: (PER 1992) A FIR, 19" DIAM., BEARS N17 1/4°E, 17.8 FT. (27 LKS.) DIST. (PER 1992) REMAINS OF A FIR BEAR S82°W, 27.39 FT. (41 1/2 LKS.) DIST. (PER 1992) A T-POST BEARS EAST, 0.2 FT. DIST. SET: A CEDAR, 17" DIAM., BEARS S7 1/4°E, 27.2 FT. DIST., SCRIBED "SE1/16S11BT," WITH TAG BY 90216 10/23/24.

T. 29 S., R. 4 W.



(J-20) (560500)

PREVIOUS RENEWALS/SURVEYS, ETC.: (1992) - DCSO VOL. 52, PG. 19783 (2007) - DCSO M154-15 (2011) - DCSO M157-41

SCOTT TOLDNESS, PLS 90216, 2024 FOUND: (PER 1992) A 3/4" BLM BRASS CAP ON 2 1/2" DIAM. STAINLESS STEEL POST, WITH T-POST ALONGSIDE, FROM WHICH: (PER 1992) A FIR, 20" DIAM., BEARS N23 1/2°W, 4.5 FT. (7 LKS.) DIST., (PER 1992) A FIR STUMP, 18" DIAM., BEARS S42°W, 15.2 FT. (23 LKS.) DIST. SET: A FIR, 6" DIAM., BEARS S30°W, 27.4 FT. DIST., SCRIBED "XBT."

SURVEYOR'S NARRATIVE

PROJECT SCOPE:

TO PROVIDE THE NECESSARY PROFESSIONAL LAND SURVEY SERVICES REQUIRED UNDER THE DEPARTMENT OF INTERIOR, BUREAU OF LAND MANAGEMENT (BLM) CONTRACT NO. 140L43240003, "FY2024 BOUNDARY LINE SURVEY - RBDO". THE PROJECT INVOLVES MARKING AND POSTING A TOTAL OF 15.25 MILES OF BOUNDARY LINE AND THE MAINTENANCE OF 58 CORNERS. THIS PROJECT IS LOCATED IN THE BLM ROSEBURG DISTRICT, DOUGLAS COUNTY, OREGON.

THE SURVEY:

THE BLM PROVIDED CONTRACT SPECIFICATIONS. RESEARCH WAS COMPLETED ON THE BLM AND DOUGLAS COUNTY WEBSITES TO ASSURE RECORDS WERE UP TO DATE AND ACCURATE.

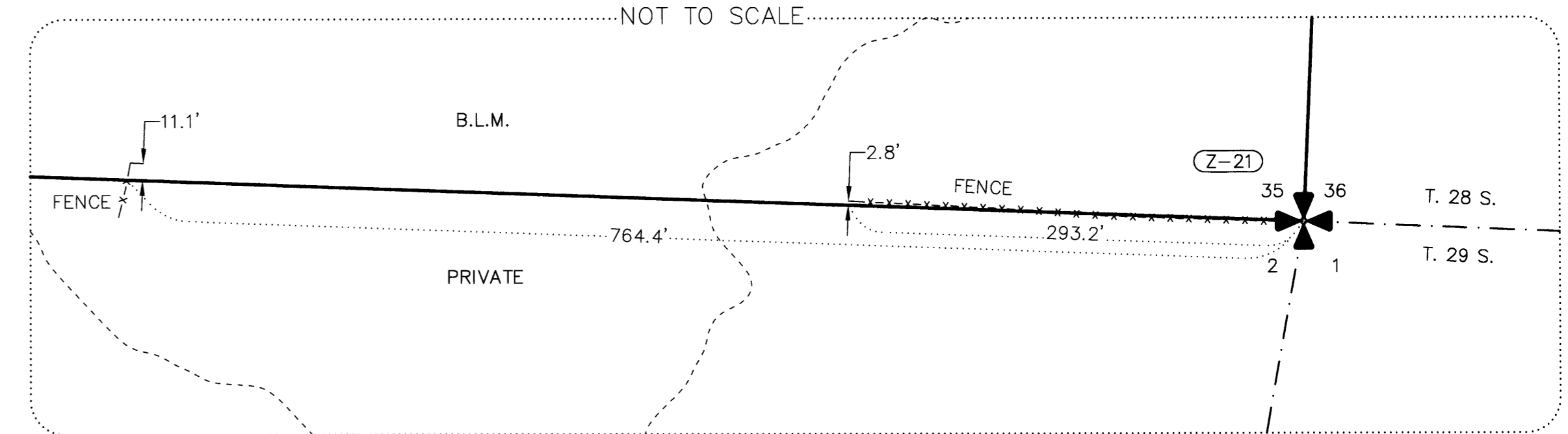
CORNERS WERE MAINTAINED TO THE STANDARDS SET BY THE 2009 B.L.M. MANUAL OF SURVEYING INSTRUCTIONS, OREGON REVISED STATUTES AND CONTRACT SPECIFICATIONS.

LINES WERE MARKED TO CONTRACT SPECIFICATIONS, WITH 5.5 FT. ALUMINUM POSTS OR LINE TREES WITH BLM BOUNDARY SIGNS ATTACHED, AT INTERVALS OF NO MORE THAN 200 FT.

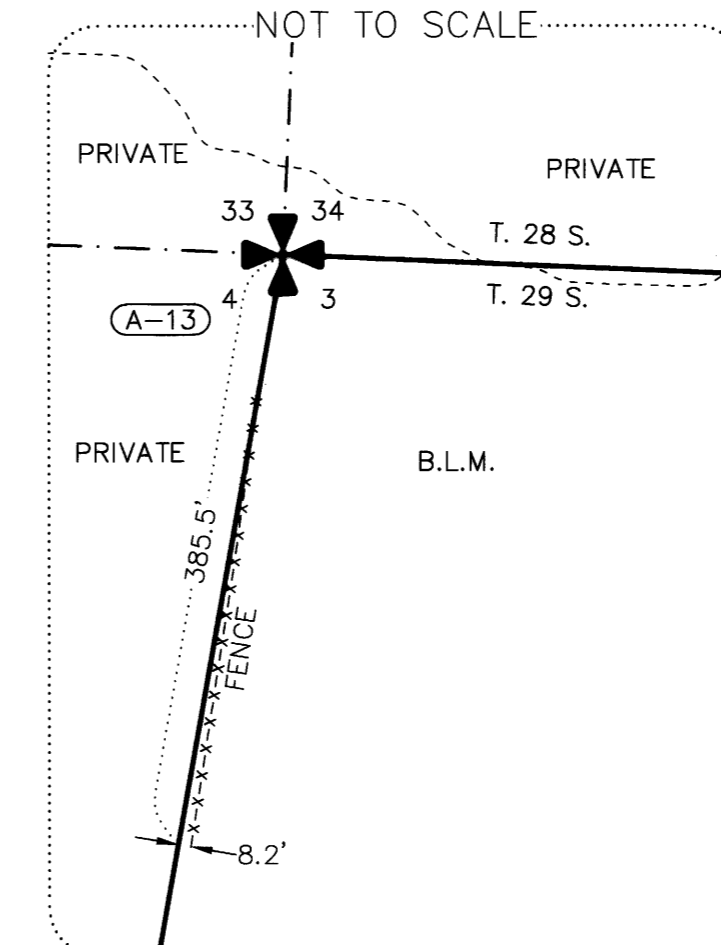
METHODS - EQUIPMENT:

- A. THE CONTROL SURVEY WAS BY GPS STATIC AND RTK OBSERVATIONS, PERFORMED USING TRIMBLE R10 & R12i GPS RECEIVERS AND DATA WAS PROCESSED USING NGS-OPUS AND TRIMBLE BUSINESS CENTER.
B. LAND CORNER TIES AND POSTING PERFORMED USING TRIMBLE R10 & R12i RECEIVERS AND R.T.K. DATA PROCESSED USING TRIMBLE BUSINESS CENTER SOFTWARE.
C. THE BASIS OF BEARING FOR THIS SURVEY IS ON THE TRUE MERIDIAN AS DETERMINED BY GLOBAL POSITIONING SYSTEM (GPS) CONTROL DERIVED FROM N.G.S. O.P.U.S. SOLUTIONS USING A REFERENCE FRAME OF NAD\_83 (2011) (EPOCH: 2010.0000).
D. FIELD SURVEY COMMENCED JULY 2024 AND WAS COMPLETED JANUARY 2025.

DETAIL 'A'



DETAIL 'B'



LEGEND

- SECTIONAL CORNER, AS NOTED.
CORNER INDEX (TYP.)
FENCE LINE
APPROXIMATE CREEK CENTERLINE

FILED Date: 1-19-2025 By: M185-79A-P Narrative: Corner Rpt: DOUGLAS COUNTY SURVEYOR

REGISTERED PROFESSIONAL LAND SURVEYOR Scott L. Toldness MAY 20, 2015 SCOTT L. TOLDNESS 90216PLS EXPIRES: 06/30/2026

Professional surveyor information block including 'FY2024 BOUNDARY LINE SURVEY - RBDO', 'DRAWING: 24-033A BLM ROSEBURG ROS', 'GLAHE & ASSOCIATES PROFESSIONAL LAND SURVEYORS', '303 Church Street Sandpoint, Idaho 83864 208-285-4474', and signature 'Scott L. Toldness'.