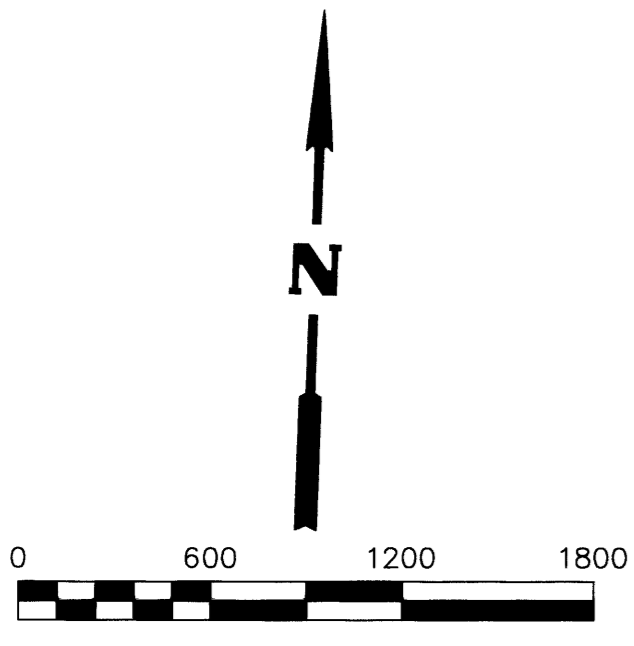


RECORD OF SURVEY

FOR
U.S. DEPT. OF THE INTERIOR
LOCATED IN SEC. 25, T. 30 S., R. 9 W. W.M.,
DOUGLAS COUNTY, OREGON.
FY2024 BOUNDARY LINE SURVEY - RBDO
CONTRACT 140L4324C0003



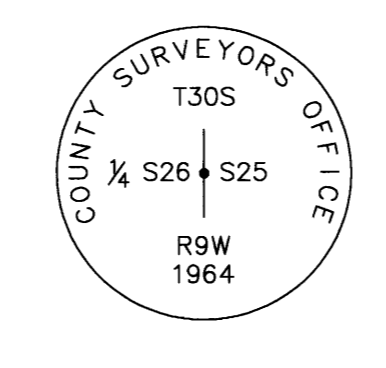
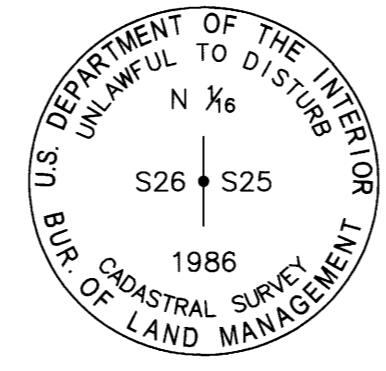
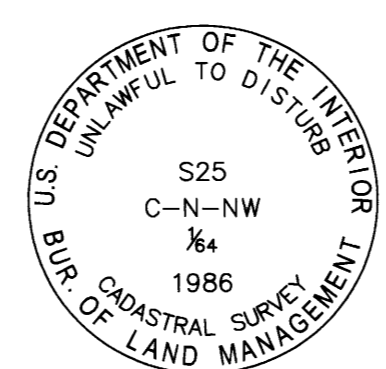
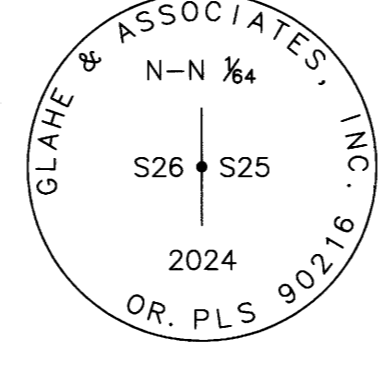
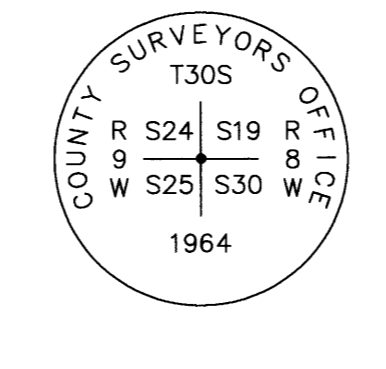
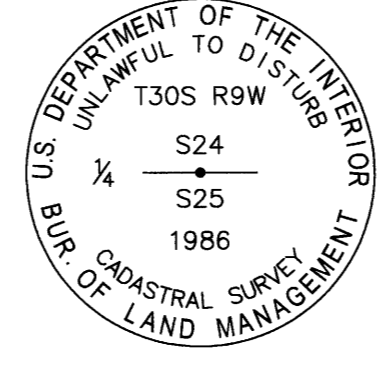
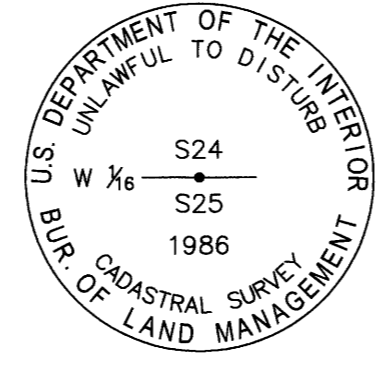
SURVEYOR'S NARRATIVE

PROJECT SCOPE:
TO PROVIDE THE NECESSARY PROFESSIONAL LAND SURVEY SERVICES REQUIRED UNDER THE DEPARTMENT OF INTERIOR, BUREAU OF LAND MANAGEMENT (BLM) CONTRACT NO. 140L4324C0003, "FY2024 BOUNDARY LINE SURVEY - RBDO".
THE PROJECT INVOLVES MARKING AND POSTING A TOTAL OF 15.25 MILES OF BOUNDARY LINE AND THE MAINTENANCE OF 58 CORNERS. THIS PROJECT IS LOCATED IN THE BLM ROSEBURG DISTRICT, DOUGLAS COUNTY, OREGON.

THE SURVEY:
THE BLM PROVIDED CONTRACT SPECIFICATIONS. RESEARCH WAS COMPLETED ON THE BLM AND DOUGLAS COUNTY WEBSITES TO ASSURE RECORDS WERE UP TO DATE AND ACCURATE.
CORNERS WERE MAINTAINED TO THE STANDARDS SET BY THE 2009 B.L.M. MANUAL OF SURVEYING INSTRUCTIONS, OREGON REVISED STATUTES AND CONTRACT SPECIFICATIONS.
LINES WERE MARKED TO CONTRACT SPECIFICATIONS, WITH 5.5 FT. ALUMINUM POSTS OR LINE TREES WITH BLM BOUNDARY SIGNS ATTACHED, AT INTERVALS OF NO MORE THAN 200 FT.

METHODS - EQUIPMENT:

- THE CONTROL SURVEY WAS BY GPS STATIC AND RTK OBSERVATIONS, PERFORMED USING TRIMBLE R10 & R12I GPS RECEIVERS AND DATA WAS PROCESSED USING NGS-OPUS AND TRIMBLE BUSINESS CENTER.
- LAND CORNER TIES AND POSTING PERFORMED USING TRIMBLE R10 & R12I RECEIVERS AND R.T.K. DATA PROCESSED USING TRIMBLE BUSINESS CENTER SOFTWARE.
- THE BASIS OF BEARING FOR THIS SURVEY IS ON THE TRUE MERIDIAN AS DETERMINED BY GLOBAL POSITIONING SYSTEM (GPS) CONTROL DERIVED FROM N.G.S. O.P.U.S. SOLUTIONS USING A REFERENCE FRAME OF NAD_83 (2011) (EPOCH:2010.0000).
- FIELD SURVEY COMMENCED JULY 2024 AND WAS COMPLETED JANUARY 2025.



(R-22) (620300)
PREVIOUS RENEWALS/SURVEYS, ETC.:
(1986) - DCSO VOL. 48, PG. 18362

SCOTT TOLDNESS, PLS 90216, 2024
FOUND: (PER 1986) A 3/4" BLM BRASS CAP ON A 2 1/2" DIAM. STAINLESS STEEL POST, WITH A CHANNEL POST & T-POST ADJACENT, FROM WHICH:
(PER 1986) A FIR, 24" DIAM., BEARS S35°W, 4.3 FT. (6.5 LKS.) DIST., WITH HEALED BLAZE,
(PER 1986) A FIR SNAG, 9" DIAM., BEARS N59°E, 13.2 FT. (20 LKS.) DIST.
SET: A CEDAR, 16" DIAM., BEARS N67 1/4°E, 159.1 FT. DIST., SCRIBED "W1/16S24BT."
ADDED POST SOUTH, 4 FT., AND EAST, 4 FT.

(R-23) (640300)
PREVIOUS RENEWALS/SURVEYS, ETC.:
(1855) - DCSO VOL. 17, PG. 7385
(1986) - DCSO VOL. 48, PG. 18361-2

SCOTT TOLDNESS, PLS 90216, 2024
FOUND: (PER 1986) A 3/4" BLM BRASS CAP ON A 2 1/2" DIAM. STAINLESS STEEL POST, FROM WHICH:
(PER 1986) A FIR, 16" DIAM., BEARS N62 1/2°E, 29.3 FT. (44 1/2 LKS.) DIST., WITH HEALED BLAZE,
(PER 1986) A FIR, 24" DIAM., BEARS S55°E (S55 1/2°E), 24.0 FT. (36 1/2 LKS.) DIST.

(R-25) (700300)
PREVIOUS RENEWALS/SURVEYS, ETC.:
(1855) - DCSO VOL. 17, PG. 7371
(1964) - DCSO C.S. FILE 53/53-61
(1986) - DCSO VOL. 48, PG. 18355-56
(2023) - DCSO M178-74 A-D

SCOTT TOLDNESS, PLS 90216, 2024
FOUND: (PER 1964) A 2 1/2" BRASS CAP ON A 1" DIAM. IRON PIPE, 0.7 FT. ABOVE GROUND, WITH T-POST ALONGSIDE, FROM WHICH:
(PER 1964) A FIR, 24" DIAM., BEARS N45 1/2°E (N35 1/2°E), 9.9 FT. DIST., WITH HEALED BLAZE,
(PER 2023) A FIR, 7" DIAM., BEARS S44°E, 10.3 FT. DIST., WITH VISIBLE SCRIBE,
(PER 1986) A FIR, 19" DIAM., BEARS S36°W, 68.7 FT. DIST., WITH VISIBLE SCRIBE,
(PER 1986) A DEAD FIR, 11" DIAM., BEARS N21°W (N27°W), 56.7 FT. DIST.
(PER 1855) A FIR STUMP BEARS N42°E, 72.6 FT. (110 LKS.) DIST.,
(PER 1855) A FIR STUMP BEARS S66°E, 31.0 FT. (47 LKS.) DIST.,
(PER 1855) A DOWN TREE BEARS S32°W, 17.8 FT. (27 LKS.) DIST.,
(PER 1855) A FIR STUMP BEARS N15°W, 80.5 FT. (122 LKS.) DIST.
SET: A FIR, 17" DIAM., BEARS N21°W, 41.5 FT. DIST., SCRIBED "T30SR9WS24BT."
ADDED POST SOUTH, 4.3 FT., AND WEST, 3.3 FT.

(RS-21) (600270)
PREVIOUS RENEWALS/SURVEYS, ETC.:
(1986) - DCSO VOL. 48, PG. 18360

SCOTT TOLDNESS, PLS 90216, 2024
FOUND: "DEEP-1" MAGNETIC MARKER AND REMAINS OF OBLITERATED ALUMINUM MONUMENT IN ROAD BED, FROM WHICH:
(PER 1986) A FIR, 17" DIAM., BEARS S84 1/4°E, 61.5 FT. (94 LKS.) DIST. TO A NAIL AT LEFT SIDE CENTER, WITH HEALED BLAZE & TAG,
(PER 1986) A FIR, 22" DIAM., BEARS S27°W, 67.8 FT. (104.5 LKS.) DIST. TO A NAIL AT RIGHT SIDE CENTER, WITH HEALED BLAZE & TAG.
SET: A 3/4" ALUMINUM CAP ON A 3/8" X 24" REBAR, 0.8 FT. BELOW ROAD SURFACE, AT FOUND MAGNETIC LOCATOR, WITH OLD ALUMINUM POST ALONGSIDE.
ADDED PAINT, BLAZES, NAILS (PER ABOVE LOCATIONS), REPLACED TAGS AND ADDED TAGS TO REV. OF BTs.
ADDED LOC. POSTER TO POST ON NORTH SIDE OF ROAD.

(RS-22) (620270)
PREVIOUS RENEWALS/SURVEYS, ETC.:
(1986) - DCSO VOL. 48, PG. 18364-65

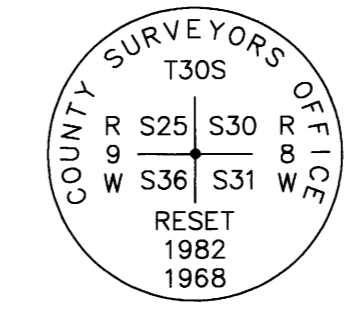
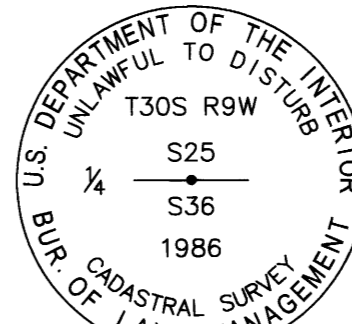
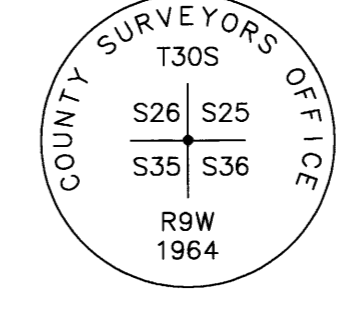
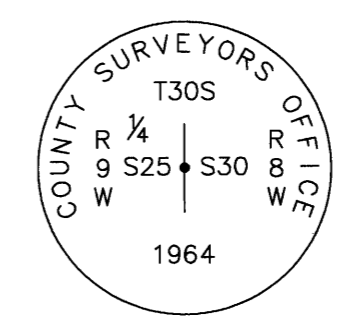
SCOTT TOLDNESS, PLS 90216, 2024
FOUND: (PER 1988) A 3/4" BLM BRASS CAP ON A 2 1/2" DIAM. STAINLESS STEEL POST, LEVEL WITH GROUND, FROM WHICH:
(PER 1986) A FIR, 21" DIAM., BEARS N89°E, 11.9 FT. (18 LKS.) DIST. TO A NAIL, WITH HEALED BLAZE,
(PER 1986) A FIR, 22" DIAM., BEARS S62°W, 7.0 FT. (11.5 LKS.) DIST. TO A NAIL, WITH HEALED BLAZE
REPLACED TAG ON S.W. BT.
ADDED PAINT, BLAZES, AND NAILS AT RIGHT SIDE CENTER OF BTs.
ADDED POST NORTH, 1.5 FT., AND WEST, 1.5 FT.

(S-21) (600260)
PREVIOUS RENEWALS/SURVEYS, ETC.:
(1986) - DCSO VOL. 48, PG. 18359-60

SCOTT TOLDNESS, PLS 90216, 2024
FOUND: (PER 1986) A 3/4" BLM BRASS CAP ON A 2 1/2" DIAM. STAINLESS STEEL POST, LEVEL WITH GROUND, FROM WHICH:
(PER 1986) A YEW, 16" DIAM., BEARS N1°E, 15.8 FT. (24 LKS.) DIST., WITH HEALED BLAZE
(PER 1986) A FIR, 17" DIAM., BEARS S79°W, 32.3 FT. (49 LKS.) DIST., WITH HEALED BLAZE.

(T-21) (600240)
PREVIOUS RENEWALS/SURVEYS, ETC.:
(1855) - DCSO VOL. 17, PG. 7385
(MAY, 1964) - DCSO C.S. FILE 51/163-12
(OCT., 1964) - DCSO C.S. FILE 53/53-63
(1986) - DCSO VOL. 48, PG. 18359

SCOTT TOLDNESS, PLS 90216, 2024
FOUND: (PER OCT., 1964) A 2 1/2" BRASS CAP ON A 2 1/2" DIAM. IRON PIPE, 1 FT. BELOW GROUND, WITH STEEL POST, S.W., 0.5 FT. DIST., FROM WHICH:
(PER 1986) AN ALDER, 16" DIAM., BEARS S60°W, 10.2 FT. (15 1/2 LKS.) DIST. WITH VISIBLE SCRIBING AND TAG BY 2339 1/18,
(PER MAY, 1964) A FIR SNAG, 15" DIAM., BEARS S78°E, 70.6 FT. (107 LKS.) DIST.
SET: A FIR, 20" DIAM., BEARS N18 1/4°E, 136.7 FT. DIST., SCRIBED "Xs25BT," A FLAT BOULDER, 6'X6'X1", BEARS S54 1/4°E, 29.2 FT. DIST. TO A NAIL IN CENTER OF CHISELED "X" ON TOP CENTER, WITH LS WASHER 90216,
A FIR, 11" DIAM., BEARS N66 1/2°W, 20.0 FT. DIST. TO A NAIL AT RIGHT SIDE CENTER, SCRIBED "Xs26BT," WITH LS WASHER AND TAG BY 90216 10/2/24, AND TAG ON REVERSE.
ADDED POST SOUTH, 2.5 FT., AND NORTH 5.0 FT., WITH BOUNDARY SIGNS.



(T-25) (700240)
PREVIOUS RENEWALS/SURVEYS, ETC.:
(1855) - DCSO VOL. 17, PG. 7371
(1964) - DCSO C.S. FILE 53/53-24
(1986) - DCSO VOL. 48, PG. 18354-55

SCOTT TOLDNESS, PLS 90216, 2024
FOUND: (PER 1964) A 2 1/2" BRASS CAP ON A 1 1/2" DIAM. IRON PIPE, 1 FT. ABOVE GROUND, FROM WHICH:
(PER 1986) A FIR, 20" DIAM., BEARS S40 1/4°E, 58.1 FT. (88 LKS.) DIST. TO A NAIL AT LEFT SIDE CENTER, WITH HEALED BLAZE, BLANK TAG ON REV.,
(PER 1855) A FIR SNAG, 15" DIAM., BEARS S3°E, 8.6 FT. (13 LKS.) DIST., WITH BLANK TAG BY HERAK,
(PER 1964) A ROTTED FIR SNAG BEARS S15°E, 6 FT. DIST.,
(PER 1986) A FIR, 18" DIAM., BEARS S82 1/2°W, 39.9 FT. (60 1/2 LKS.) DIST. TO A NAIL IN RIGHT SIDE CENTER, WITH HEALED BLAZE,
(PER 1964) A FIR STUMP, 40" DIAM., 2 FT. TALL, BEARS NORTH, 36.3 FT. DIST., WITH HEALED BLAZE.
ADDED PAINT, BLAZES, NAILS (PER ABOVE LOCATIONS), AND TAGS ON FACE & REV. OF BTs.
ADDED TAG TO THE FIR STUMP.
ADDED BEARING AND DIST. TO TAG ON THE FIR SNAG.

(V-21) (600200)
PREVIOUS RENEWALS/SURVEYS, ETC.:
(1855) - DCSO VOL. 17, PG. 7384
(1893) - DCSO VOL. 17, PG. 7412
(1964) - DCSO C.S. FILE 53/53-44
(1986) - DCSO VOL. 48, PG. 18358-9

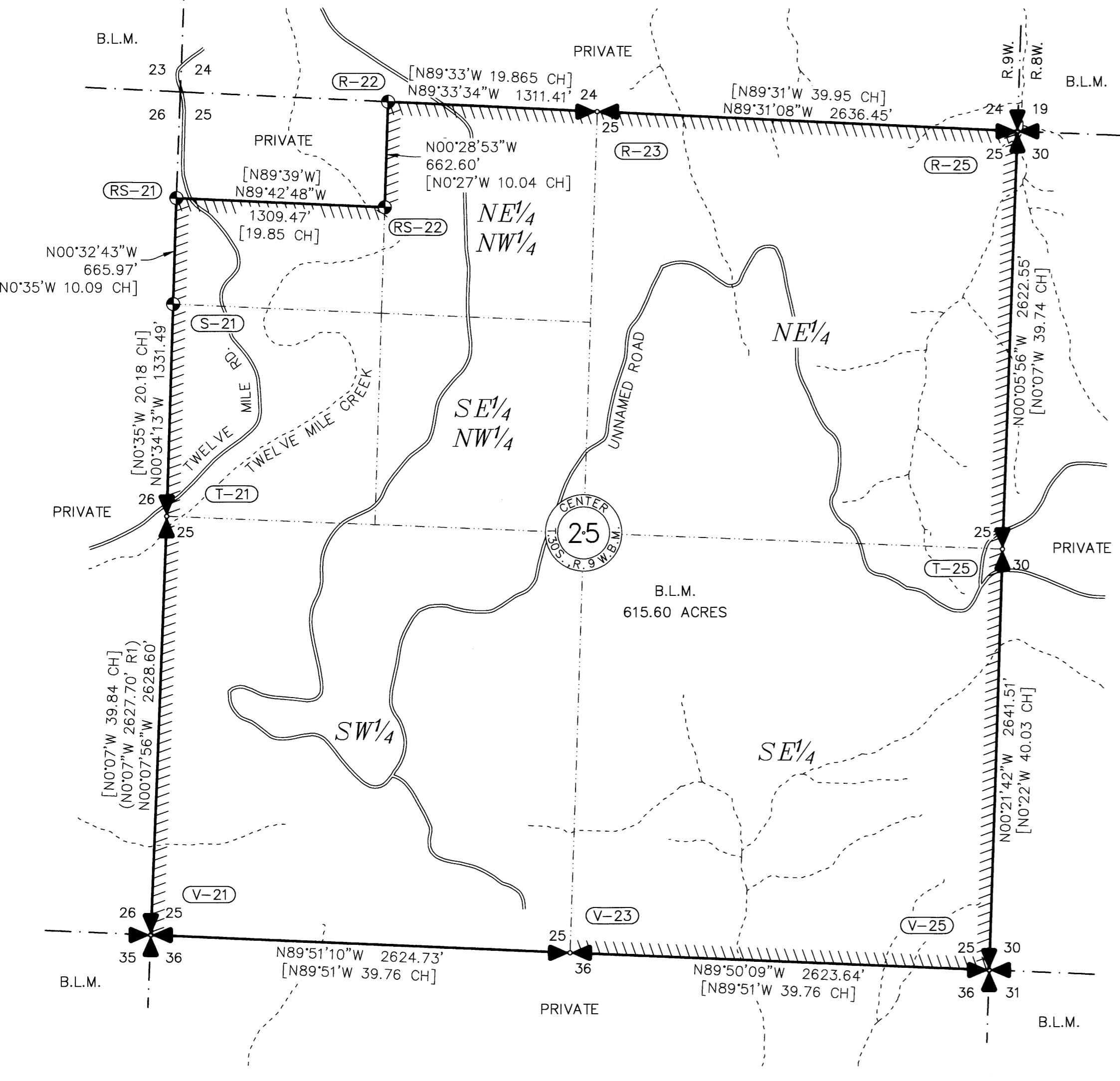
SCOTT TOLDNESS, PLS 90216, 2024
FOUND: (PER 1964) A 2 1/2" BRASS CAP ON A 1 1/2" DIAM. IRON PIPE, 0.8 FT. ABOVE A COVERED MOUND OF STONE, WITH ALUMINUM POST ALONGSIDE, FROM WHICH:
(PER 1893) A FIR, 39" DIAM., BEARS N50°E, 16.6 FT. DIST. TO A NAIL AT LEFT SIDE CENTER, WITH HEALED BLAZE AND ROSEBURG LOC. POSTER,
(PER 1964) A FIR, 14" DIAM., BEARS N70°E, 23.8 FT. DIST. TO A NAIL AT RIGHT SIDE CENTER, WITH HEALED BLAZE AND TAG BY OS 10/64,
(PER 1964) A FIR, 10" DIAM., BEARS SOUTH, 14.2 FT. DIST. TO A NAIL IN RIGHT SIDE CENTER, WITH HEALED BLAZE,
(PER 1964) A FIR SNAG, 14" DIAM., 20 FT. TALL, BEARS N19°W, 20.5 FT. DIST. TO A NAIL IN LEFT SIDE CENTER, WITH HEALED BLAZE AND TAG BY OS 10/64,
(PER 1855) A CEDAR, 52" DIAM., BEARS N1°W, 166.0 FT. (160.6 FT.) DIST. TO A NAIL AT RIGHT SIDE CENTER, WITH HEALED BLAZE AND TAG BY MIKE 10/64,
(PER 1964) A FIR, 11" DIAM., BEARS S45°E, 25.9 FT. DIST. TO A NAIL IN RIGHT SIDE CENTER, WITH HEALED BLAZE AND TAG BY OS 10/64.
ADDED PAINT, BLAZES, NAILS (PER ABOVE LOCATIONS), AND TAGS TO REV. OF BTs.
ADDED POST NORTH, 5 FT., AND EAST, 5 FT., WITH BOUNDARY SIGNS.

(V-23) (640200)
PREVIOUS RENEWALS/SURVEYS, ETC.:
(1855) - DCSO VOL. 17, PG. 7384
(1986) - DCSO VOL. 48, PG. 18358

SCOTT TOLDNESS, PLS 90216, 2024
FOUND: (PER 1986) A 3/4" BLM BRASS CAP ON A BENT 2 1/2" DIAM. STAINLESS STEEL POST, 0.7 FT. ABOVE GROUND, FROM WHICH:
(PER 1986) A FIR, 17" DIAM., BEARS N25 1/2°E, 59.4 FT. (90 LKS.) DIST., WITH HEALED BLAZE,
(PER 1986) A FIR STUMP, 10" DIAM., 6 FT. TALL, BEARS S48 1/2°E, 16.0 FT. (25 LKS.) DIST., WITH HEALED BLAZE AND TAG BY PETE & S 86,
SET: A FIR, 7" DIAM., BEARS S53°E, 5.0 FT. DIST. TO A NAIL, SCRIBED "X BT,"
A FIR, 11" DIAM., BEARS S86 1/4°W, 23.3 FT. DIST. TO A NAIL, SCRIBED "Xs36BT,"
A FIR, 12" DIAM., BEARS N13 1/4°W, 14.0 FT. DIST. TO A NAIL, SCRIBED "Xs25BT."
ADDED LS WASHER & TAG BY 90216 9/30/24 TO NEW BTs.
STRAIGHTENED MON. AND BACKFILLED WITH DIRT TO 0.6 FT. ABOVE GROUND.
ADDED POST WEST, 5 FT., AND EAST, 5 FT., WITH BOUNDARY SIGNS.

(V-25) (700200)
PREVIOUS RENEWALS/SURVEYS, ETC.:
(1855) - DCSO VOL. 17, PG. 7371-72
(1968) - DCSO C.S. FILE 53/67-1
(1968) - DCSO VOL. 48, PG. 18354
(1982) - DCSO C.S. FILE 62/1-34

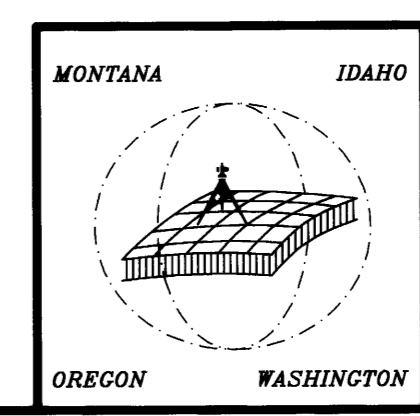
SCOTT TOLDNESS, PLS 90216, 2024
FOUND: (PER 1968) A 2 1/2" BRASS CAP ON A 1 1/2" DIAM. IRON PIPE, 0.6 FT. ABOVE GROUND, FROM WHICH:
(PER 1855) A STUMP, 32" DIAM., 3 FT. TALL, BEARS N25°E, 57.4 FT. (87 LKS.) DIST., WITH PART VISIBLE SCRIBE AND TAG "12/65,"
(PER 1968) A FIR, 17" DIAM., BEARS S52°E, 16.3 FT. (16.2 FT.) TO A NAIL, WITH VISIBLE SCRIBING AND TAG BY CSO 8/15/68,
(PER 1968) A FIR, 19" DIAM., BEARS S80 1/2°W (S82°W), 25.7 FT. (26.6 FT.) DIST TO A NAIL, WITH HEALED BLAZE AND TAG BY CSO 8/15/68,
(PER 1855) A FIR, 26" DIAM., BEARS N45°W (N47°W), 24.4 FT. (37 LKS.) DIST. TO A NAIL, WITH VISIBLE SCRIBING,
(PER 1855) A DEAD AND DOWN FIR, 54" DIAM., BEARS S1 1/2°W, 359.6 FT. (540 LKS.) DIST., WITH HACKED OPEN FACE.
SET: A MADRONE, 12" DIAM., BEARS N52 1/2°E, 31.9 FT. DIST. TO A NAIL, SCRIBED "T30SR8WS30BT," WITH LS WASHER 90216 AND TAG BY ES 24, AND TAG ON REV.
REPLACED TAGS ON THE S.E. AND S.W. BT.
ADDED PAINT, BLAZES, NAILS AT RIGHT SIDE CENTER, AND TAGS TO REV. OF BTs.
ADDED PAINT, BLAZE, AND TAG TO THE DEAD AND DOWN FIR, AND PAINT & TAG TO THE STUMP.



- LEGEND**
- SECTIONAL CORNER, AS NOTED.
 - FOUND MONUMENTATION, AS NOTED.
 - PROPERTY BOUNDARY MARKED AND POSTED THIS SURVEY
 - CORNER INDEX (TYP.)
 - APPROXIMATE CREEK CENTERLINE

- RECORD REFERENCES**
- [] 1986 BLM RESURVEY BY BEDELL, ROGERS, AND PETERSON
 - (R1) 2007 SURVEY BY DAVID A. EDWARDS, LS 2339, MAP FILE M152-35

REGISTERED PROFESSIONAL LAND SURVEYOR
Scott L. Toldness
OREGON
MAY 20, 2015
SCOTT L. TOLDNESS
90216PLS
EXPIRES: 06/30/2026



FY2024
BOUNDARY LINE SURVEY - RBDO
DRAWING: 24-033A BLM ROSEBURG ROS
GLAHE & ASSOCIATES
PROFESSIONAL LAND SURVEYORS
303 Church Street
Sandpoint, Idaho 83864
208-265-4474

Scale: 1"=600'
Checked By: SLT
Drawn By: SWO
Plot Date: 2/13/2025
Sheet: 1 of 1

FILED
Date: 2-13-2025 By: SLT
This survey consists of:
Map: M152-25
Narrative:
Corner Rpt:
DOUGLAS COUNTY SURVEYOR

T.30S. R.9W.
SEC. 25