

RECORD OF SURVEY

FOR

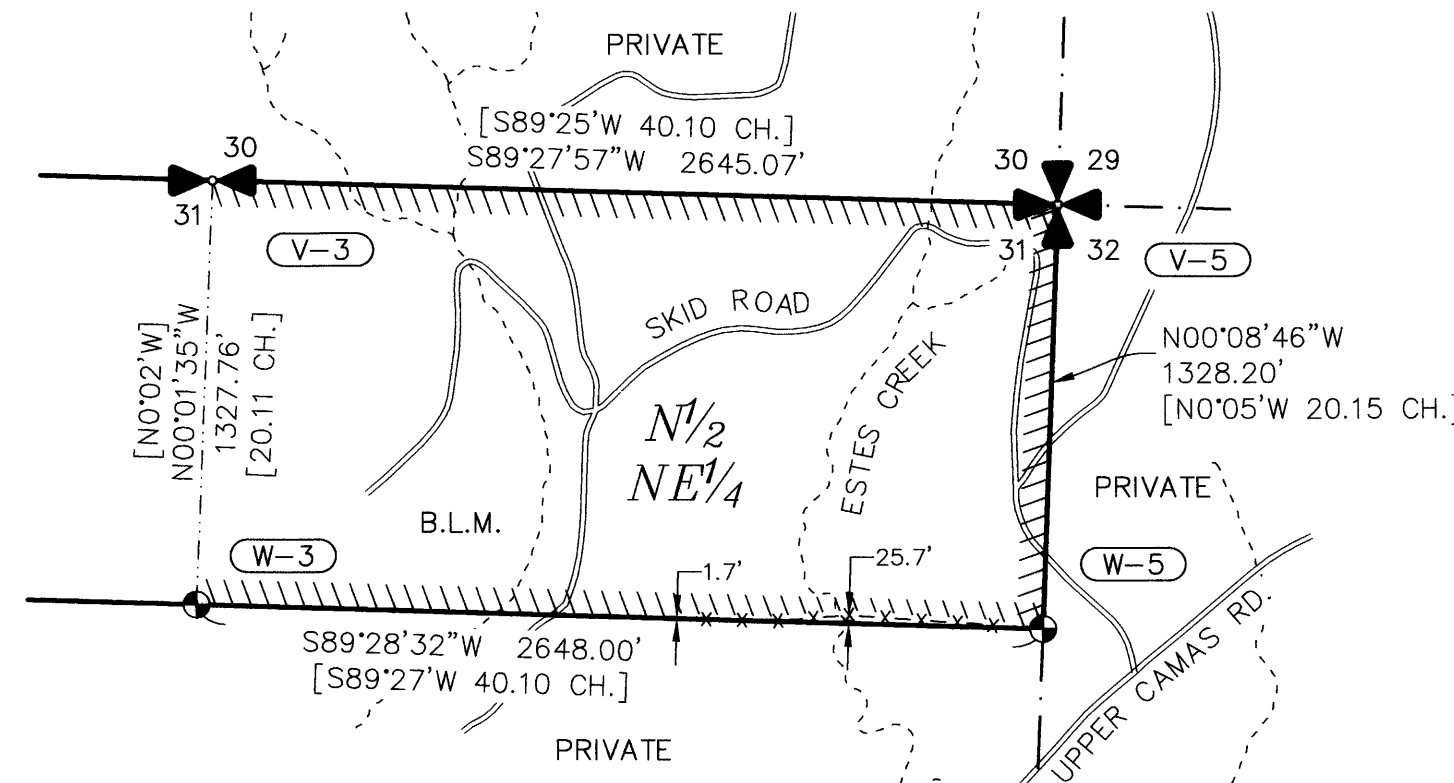
U.S. DEPT. OF THE INTERIOR

LOCATED IN PORTIONS OF THE NE 1/4 OF SEC. 31, T. 28 S., R. 8 W.,
NW 1/4 OF SEC. 7 & SW 1/4 OF SEC. 9, T. 29 S., R. 8 W., W.M.,
DOUGLAS COUNTY, OREGON.

FY2024 BOUNDARY LINE SURVEY - RBDO
CONTRACT 140L4324C0003

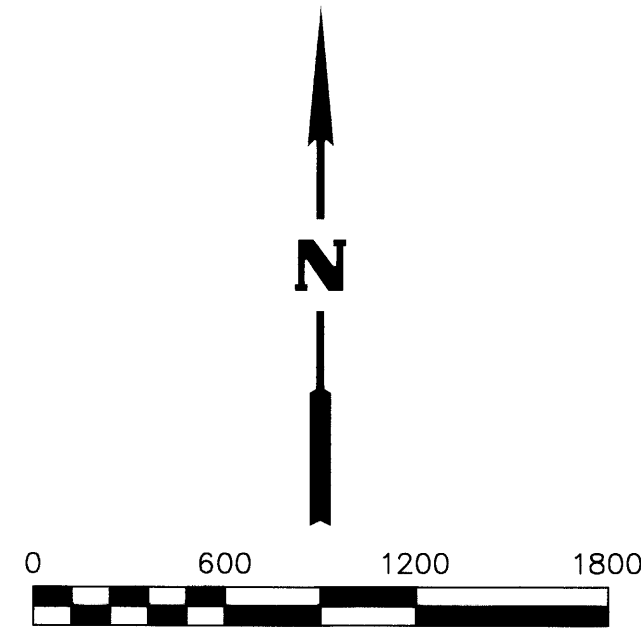
FILED
Date: 2-19-2025 By: [Signature]
This survey consists of:
Map: M185-27A-E-B
Narrative:
Corner Rpt:
DOUGLAS COUNTY
SURVEYOR

T. 28 S., R. 8 W., SEC. 31



RECORD REFERENCES

- [] 1964 BLM SURVEY BY JOHN M. JELLEY (T28SR8W31)
- { } 1973-1976 BLM SURVEY BY CHARLES E. AKIN, JR., JAMES E. JELLEY, AND BRUCE A. SHANER (T29SR8W7)
- // 1980-1982 BLM SURVEY BY JAMES E. JELLEY, WAYNE L. ROGERS (T29SR8W9)
- (R1) 1975 SURVEY BY ROMANSO E. WARE, LS 1005, MAP FILE M56-13
- (R2) 1983 SURVEY BY HERBERT L. NORTHCRAFT, LS 750, MAP FILE M93-56



LEGEND

- SECTIONAL CORNER, AS NOTED. SEE PG. 2
- FOUND MONUMENTATION, AS NOTED. SEE PG. 2
- PROPERTY BOUNDARY MARKED AND POSTED THIS SURVEY
- CORNER INDEX (TYP.) SEE SHEET 2
- FENCE
- APPROXIMATE CREEK CENTERLINE

SURVEYOR'S NARRATIVE

PROJECT SCOPE:

TO PROVIDE THE NECESSARY PROFESSIONAL LAND SURVEY SERVICES REQUIRED UNDER THE DEPARTMENT OF INTERIOR, BUREAU OF LAND MANAGEMENT (BLM) CONTRACT NO. 140L4324C0003, "FY2024 BOUNDARY LINE SURVEY - RBDO". THE PROJECT INVOLVES MARKING AND POSTING A TOTAL OF 15.25 MILES OF BOUNDARY LINE AND THE MAINTENANCE OF 58 CORNERS. THIS PROJECT IS LOCATED IN THE BLM ROSEBURG DISTRICT, DOUGLAS COUNTY, OREGON.

THE SURVEY:

THE BLM PROVIDED CONTRACT SPECIFICATIONS. RESEARCH WAS COMPLETED ON THE BLM AND DOUGLAS COUNTY WEBSITES TO ASSURE RECORDS WERE UP TO DATE AND ACCURATE.

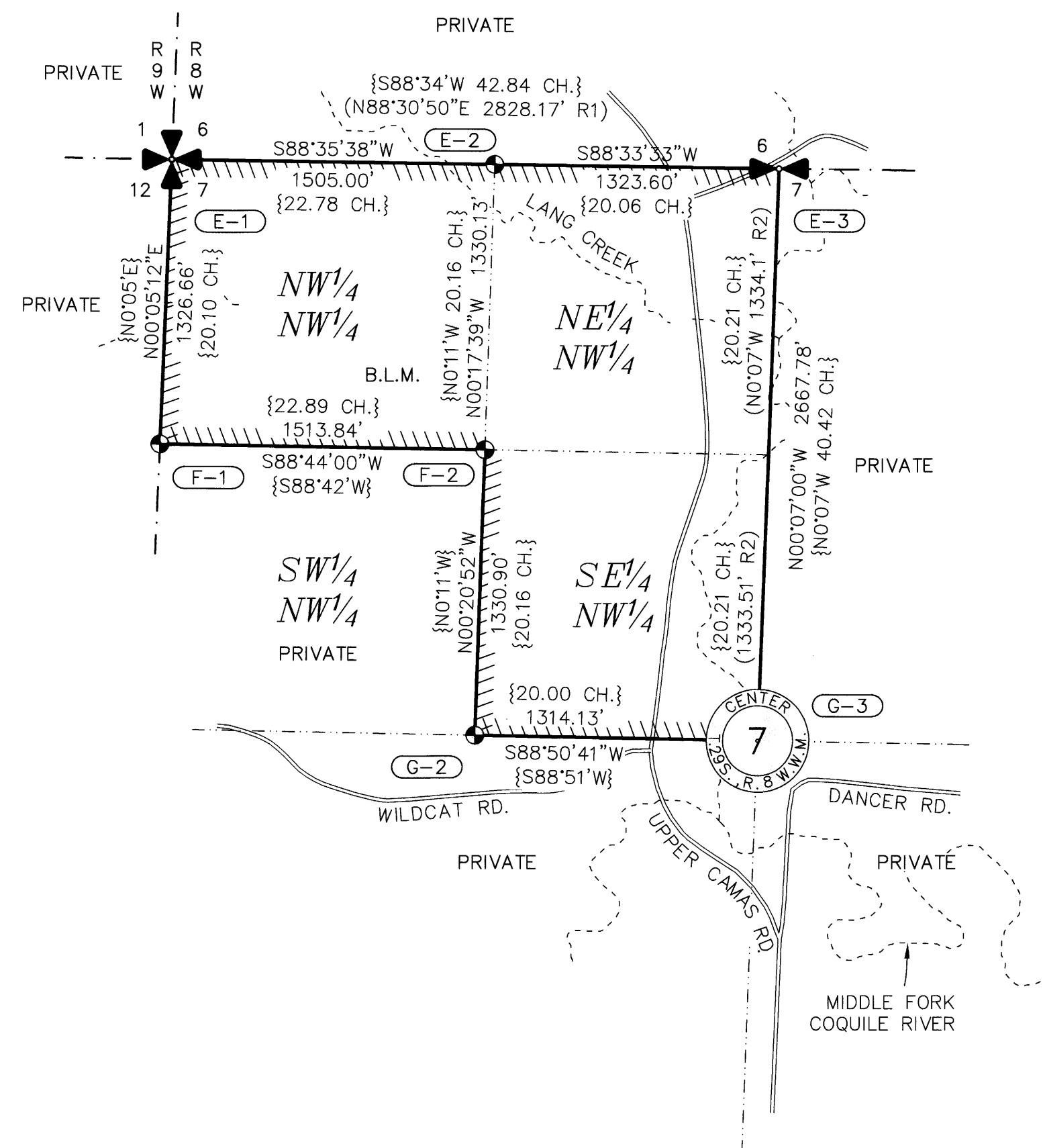
CORNERS WERE MAINTAINED TO THE STANDARDS SET BY THE 2009 B.L.M. MANUAL OF SURVEYING INSTRUCTIONS, OREGON REVISED STATUTES AND CONTRACT SPECIFICATIONS.

LINES WERE MARKED TO CONTRACT SPECIFICATIONS, WITH 5.5 FT. ALUMINUM POSTS OR LINE TREES WITH BLM BOUNDARY SIGNS ATTACHED, AT INTERVALS OF NO MORE THAN 200 FT.

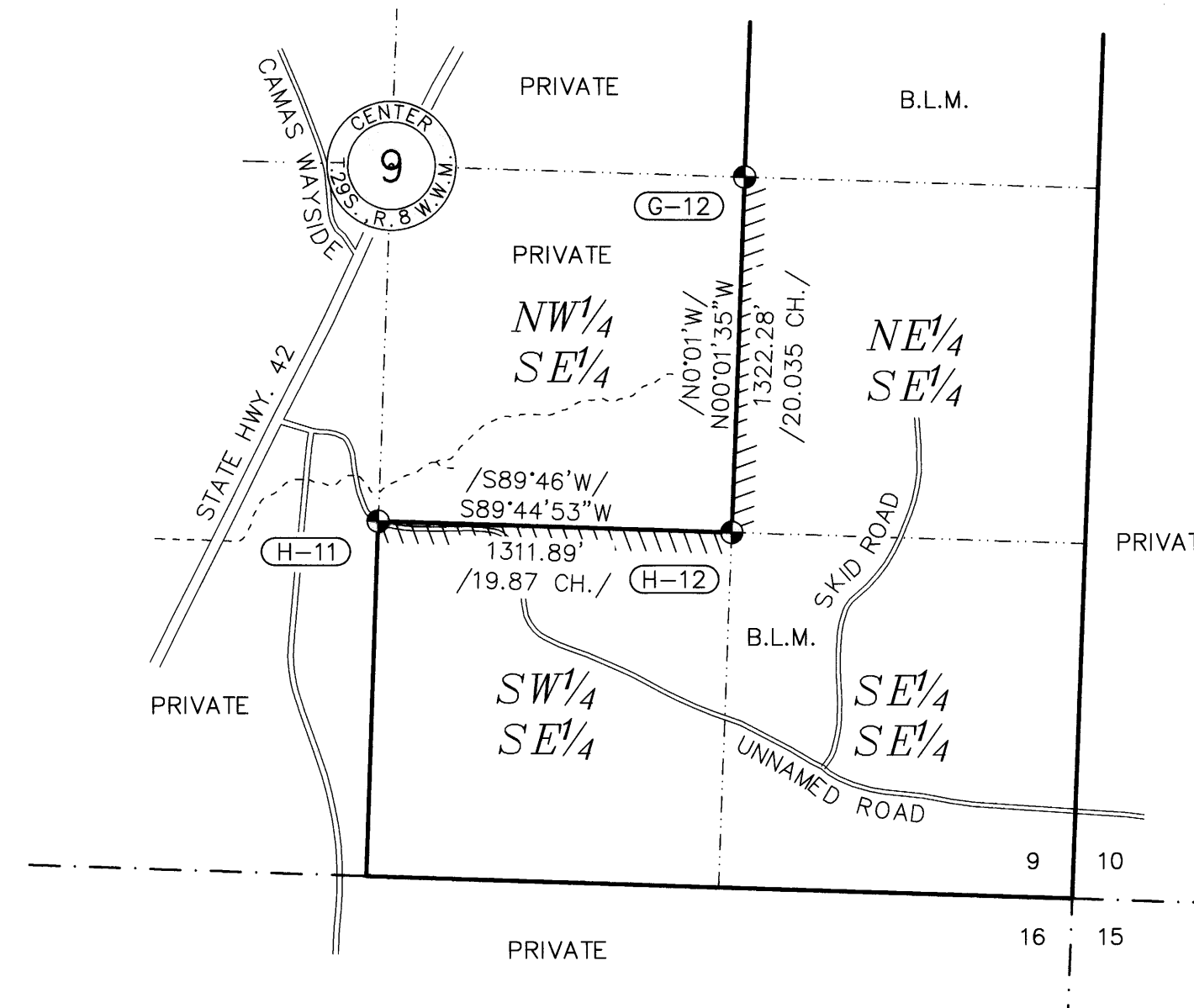
METHODS - EQUIPMENT:

- A. THE CONTROL SURVEY WAS BY GPS STATIC AND RTK OBSERVATIONS, PERFORMED USING TRIMBLE R10 & R12I GPS RECEIVERS AND DATA WAS PROCESSED USING NGS-OPUS AND TRIMBLE BUSINESS CENTER.
- B. LAND CORNER TIES AND POSTING PERFORMED USING TRIMBLE R10 & R12I RECEIVERS AND R.T.K. DATA PROCESSED USING TRIMBLE BUSINESS CENTER SOFTWARE.
- C. THE BASIS OF BEARING FOR THIS SURVEY IS ON THE TRUE MERIDIAN AS DETERMINED BY GLOBAL POSITIONING SYSTEM (GPS) CONTROL DERIVED FROM N.G.S. O.P.U.S. SOLUTIONS USING A REFERENCE FRAME OF NAD_83 (2011) (EPOCH: 2010.0000).
- D. FIELD SURVEY COMMENCED JULY 2024 AND WAS COMPLETED JANUARY 2025.

T. 29 S., R. 8 W., SEC. 7

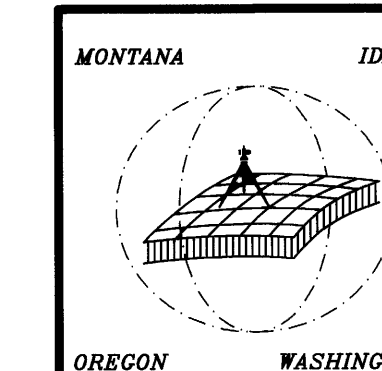


T. 29 S., R. 8 W., SEC. 9



T. 28 S., R. 8 W., SEC. 31	T. 29 S., R. 8 W., SEC. 7	T. 29 S., R. 8 W., SEC. 9

REGISTERED PROFESSIONAL LAND SURVEYOR
Scott L. Toldness
OREGON
MAY 20, 2015
SCOTT L. TOLDNESS
90216PLS
EXPIRES: 06/30/2026



FY2024
BOUNDARY LINE SURVEY - RBDO
DRAWING: 24-033A BLM ROSEBURG ROS
Scale: 1" = 600'
Checked By: SLT Drawn By: SWO
Sandpoint, Idaho 83864
208-265-4474
Plot Date: 2/13/2025 Sheet: 1 of 2

RECORD OF SURVEY

FOR

U.S. DEPT. OF THE INTERIOR

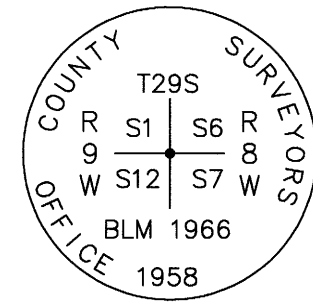
LOCATED IN PORTIONS OF THE NE ¼ OF SEC. 31, T. 28 S., R. 8 W.,
NW ¼ OF SEC. 7 & SW ¼ OF SEC. 9, T. 29 S., R. 8 W., W.M.,
DOUGLAS COUNTY, OREGON.

FY2024 BOUNDARY LINE SURVEY - RBDO CONTRACT 140L4324C0003

T. 29 S., R. 8 W

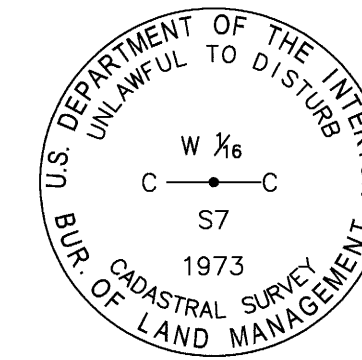
T. 29 S., R. 8 W

FILED
Date: 2-9-2025 By: 9
This survey consists of:
Map: M185-21A-B
Narrative:
Corner Rpt: _____
DOUGLAS COUNTY
SURVEYOR



(E-1) (100600)
PREVIOUS RENEWALS/SURVEYS, ETC.:
(1855) - DCSO VOL. 16, PG. 6572-73
(1958) - DCSO C.S. FILE 49/100-10
(1966) - DCSO VOL. 34, PG. 14002-03
(1973-1976) - DCSO VOL. 39, PG. 15753-15754

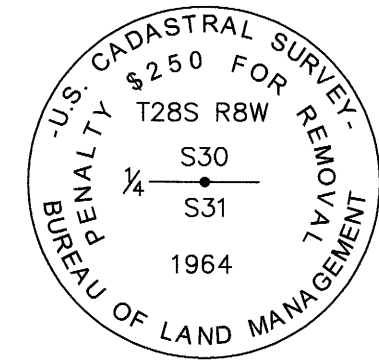
SCOTT TOLDNESS, PLS 90216, 2024
FOUND: (PER 1966) A 2 ½" BLM BRASS CAP ON A 1" DIAM. IRON POST, 0.5 FT. ABOVE GROUND, FROM WHICH:
(PER 1958) A FIR, 40" DIAM., BEARS N75°E, 3.3 FT. (5 LKS.) DIST., WITH HEALED BLAZE
AND LOC. POSTER ON N. FACE,
(PER 1958) A FIR, 32" DIAM., BEARS S30°E, 42.7 FT. DIST. TO A NAIL AT RIGHT SIDE CENTER, WITH HEALED BLAZE
AND LOC. POSTER ON W. FACE,
(PER 1958) A FIR, 25" DIAM., BEARS S57°W, 44.5 FT. DIST. TO A NAIL AT RIGHT SIDE CENTER, WITH HEALED BLAZE
AND LOC. POSTER ON N.W. FACE,
(PER 1958) A FIR, 18" DIAM., BEARS N42°W, 59.2 FT. DIST. TO A NAIL AT LEFT SIDE CENTER, WITH HEALED BLAZE
AND LOC. POSTER ON REV.
(PER 1855) A FIR STUMP, 23" DIAM., 6 FT. TALL, BEARS S67°W, 40.3 FT. (61 LKS.) DIST.
ADDED PAINT, BLAZES, NAILS (PER ABOVE LOCATIONS), AND TAGS TO REV. AND FACE OF BTs.



(G-2) (120540)
PREVIOUS RENEWALS/SURVEYS, ETC.:
(1973-1976) - DCSO VOL. 39, PG. 15776

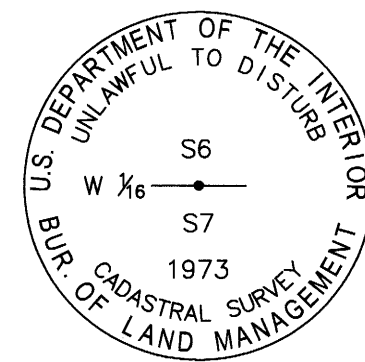
SCOTT TOLDNESS, PLS 90216, 2024
FOUND: (PER 1973) A 3 ¼" BLM BRASS CAP, A 2 ½" DIAM. IRON POST,
0.3 FT. BELOW GROUND, FROM WHICH:
(PER 1973) A FIR, 19" DIAM., BEARS N4 ½°E, 63.5 FT. (98 LKS.) DIST. TO A NAIL IN RIGHT SIDE
CENTER, WITH HEALED BLAZE AND BOUNDARY SIGN ON W. FACE,
SET: A CEDAR, 11" DIAM., BEARS N54 ½°E, 49.7 FT. DIST. TO A NAIL IN LEFT SIDE CENTER,
SCRIBED "CW ½ S7BT," WITH LS WASHER AND TAG 90216 10/10/24,
A POWER POLE BEARS N75°W, 9.0 FT. DIST.
ADDED NAIL (PER ABOVE LOCATION) AND UPDATED TAG ON THE N.E. BT.
ADDED PAINT AND BLAZES TO BTs.
ADDED POST EAST, 5 FT., AND NORTH, 5 FT. WITH BOUNDARY SIGNS.

T. 28 S., R. 8 W.



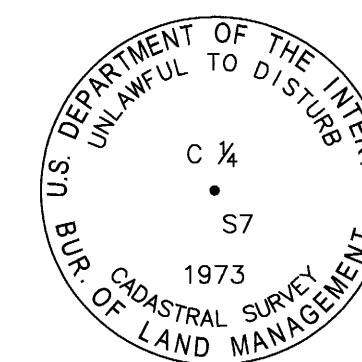
(V-3) (140200)
PREVIOUS RENEWALS/SURVEYS, ETC.:
(1855) - DCSO VOL. 14, PG. 5813
(1964) - DCSO VOL. 32, PG. 13572-73
(1993) - DCSO M112-78 & C.S. 63/153-16
(2013) - DCSO BLM PLAT T28-8W, 2014-1 & VOL. 58, PG. 23053

SCOTT TOLDNESS, PLS 90216, 2024
FOUND: (PER 1964) A 3 ¼" BLM BRASS CAP ON A 2 ½" DIAM. IRON POST, 0.3 FT. ABOVE GROUND, WITH AN
ALUMINUM POST, EAST, 1.0 FT., FROM WHICH:
(UNKNOWN ORIG.) A FIR, 36" DIAM., BEARS S33°E, 68.4 FT. DIST., WITH HEALED BLAZE AND TAG
BY HERAK & MAYER 4/58,
(PER 1993) A FIR, 12" DIAM., BEARS S21 ½°W, 6.4 FT. DIST., WITH HEALED BLAZE AND TAG BY JMT 7/64,
(PER 1964) A FIR, 16" DIAM., BEARS S9 ½°W, 38.6 FT. DIST., WITH HEALED BLAZE AND TAG BY SHANER 7/23/93,
(PER 2013) A FIR, 11" DIAM., BEARS N52°W, 12.6 FT. DIST., WITH HEALED BLAZE AND TAG BY MM 4/13.
ADDED POST EAST, 5 FT. AND WEST, 5 FT. WITH BOUNDARY SIGNS.
ADDED PAINT, BLAZES, AND TAGS TO BTs.
ADDED NAILS AT SIDE CENTER OF THE TWO S.W. BTs.



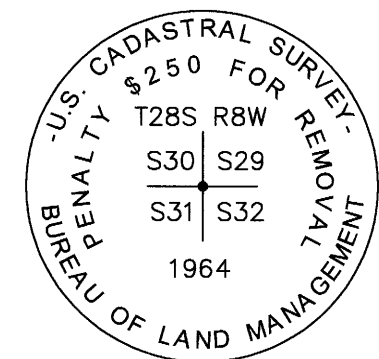
(E-2) (120600)
PREVIOUS RENEWALS/SURVEYS, ETC.:
(1973-1976) - DCSO VOL. 39, PG. 15774

SCOTT TOLDNESS, PLS 90216, 2024
FOUND: (PER 1973) A 3 ¼" BLM BRASS CAP ON A 2 ½" DIAM. IRON POST, 0.4 FT. ABOVE GROUND,
FROM WHICH:
(PER 1973) A FIR, 23" DIAM., BEARS S7 ½°E, 36.6 FT. DIST. TO A NAIL AT RIGHT SIDE CENTER, WITH HEALED BLAZE,
(PER 1973) A FIR STUMP, 20" DIAM., 20" TALL, BEARS N55 ½°W, 12.8 FT. DIST.
SET: A FIR, 12" DIAM., BEARS N79 ¼°E, 42.6 FT. DIST. TO A NAIL AT SIDE CENTER, SCRIBED "W1/16S6BT,"
WITH LS WASHER 90216 BELOW.
ADDED PAINT, BLAZE, AND NAILS (PER ABOVE LOCATIONS) TO THE FOUND 23" FIR, AND TAG TO REV.
ADDED TAG AND PAINT TO THE STUMP.
ADDED POST EAST, 5 FT., AND WEST, 5 FT.



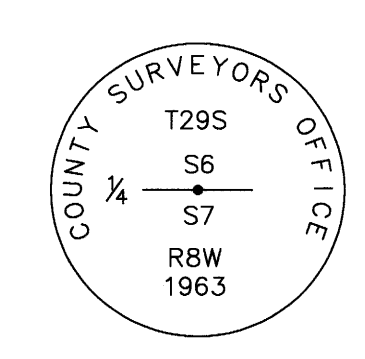
(G-3) (140540)
PREVIOUS RENEWALS/SURVEYS, ETC.:
(1973) - DCSO VOL. 39, PG. 15775

SCOTT TOLDNESS, PLS 90216, 2024
FOUND: (PER 1973) A 3 ¼" BLM BRASS CAP A 2 ½" DIAM. IRON POST, 0.3 FT. ABOVE GROUND,
FROM WHICH:
(PER 1973) A CEDAR, 27" DIAM., BEARS N11 ½°W, 22.44 FT. DIST., WITH HEALED BLAZE
AND TAG BY AKIN 8/73,
SET: A FIR, 8" DIAM., BEARS N30°E, 30.15 FT. DIST. TO A NAIL, SCRIBED "C ½ S7BT,"
WITH LS WASHER AND TAG 90216 10/24,
A FIR, 15" DIAM., BEARS S69 ¼°E, 20.05 FT. DIST. TO A NAIL, SCRIBED "C ½ S7BT,"
WITH LS WASHER AND TAG 90216 10/24,
A FIR, 9" DIAM., BEARS S55°W, 22.45 FT. DIST. TO A NAIL, SCRIBED "XBT,"
WITH LS WASHER AND TAG 90216 10/24.
ADDED POST WEST, 5 FT., AND NORTH, 5 FT. WITH BOUNDARY SIGNS.



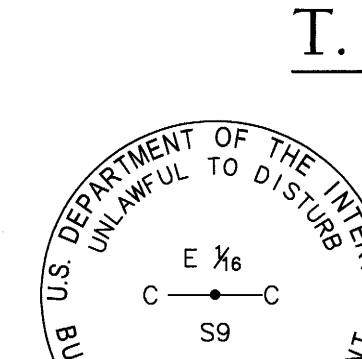
(V-5) (200200)
PREVIOUS RENEWALS/SURVEYS, ETC.:
(1855) - DCSO VOL. 14, PG. 5812
(1924) - DCSO C.S. FILE 8/28 & M8-54
(1964) - DCSO VOL. 32, PG. 13572

SCOTT TOLDNESS, PLS 90216, 2024
FOUND: (PER 1964) A 3 ¼" BLM BRASS CAP ON A 2 ½" DIAM. IRON POST, FLUSH WITH GROUND, WITH A ¾" IRON PIPE
ALONG N.E. FACE AND A POST, NORTH, 0.7 FT., FROM WHICH:
(PER 1964) A FIR, 28" DIAM., BEARS S24 ½°E, 19.8 FT. DIST., WITH HEALED BLAZE AND TAG BY CSO 64,
(PER 1924) A FIR, 22" DIAM., BEARS S8°E, 13.2 FT. DIST., WITH HEALED BLAZE AND TAG BY BM 4/59
(PER 1924) A FIR, 30" DIAM., BEARS S41 ½°W, 8.25 FT. DIST., WITH HEALED BLAZE,
(PER 1924) A FIR, 31" DIAM., BEARS N50°W, 3.2 FT. DIST., WITH TAG BY BM 4/59.
SET: A FIR, 6" DIAM., BEARS N34 ½°E, 38.1 FT. DIST. TO A NAIL AT LEFT SIDE CENTER, SCRIBED "T28SR8WS29BT,"
WITH LS WASHER AND TAG BY 90216 10/24,
ADDED PAINT, BLAZES, TAGS TO REV., AND REPLACED TAGS WITH UPDATED BEARINGS.
ADDED POST SOUTH, 5 FT., AND WEST, 5 FT.



(E-3) (140600)
PREVIOUS RENEWALS/SURVEYS, ETC.:
(1855) - DCSO VOL. 16, PG. 6607
(1963) - DCSO C.S. FILE 49/139-99
(1973) - DCSO VOL. 39, PG. 15773-74
(1983) - DCSO M93-56
(2000) - DCSO M134-30

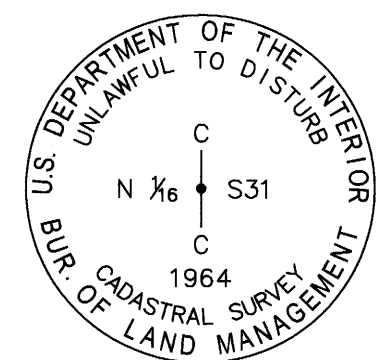
SCOTT TOLDNESS, PLS 90216, 2024
FOUND: (PER 1966) A 2 ½" BRASS CAP ON A 1" DIAM. IRON PIPE, 0.5 FT. ABOVE GROUND,
WITH A POST EAST, 0.4 FT., FROM WHICH:
(PER 1963) A FIR, 42" DIAM., BEARS S16°W, 29.0 FT. DIST. TO A NAIL AT LEFT SIDE CENTER, WITH HEALED BLAZE,
(PER 1973) A YEW, 35" DIAM., BEARS N3°W, 9.2 FT. DIST. TO A NAIL AT RIGHT SIDE CENTER, WITH PARTIALLY
VISIBLE SCRIBE IN OPEN FACE AND TAG BY "WIN 1-11-63."
ADDED PAINT, BLAZES, NAILS (PER ABOVE LOCATIONS), AND TAGS TO FACE AND REV. OF BTs.
ADDED POST SOUTH, 6 FT., AND WEST, 6 FT.



(G-12) (360540)
PREVIOUS RENEWALS/SURVEYS, ETC.:
(1980) - DCSO VOL. 44, PG. 17011
(1986) - DCSO CS FILE 63/9-16
(1993) - DCSO M117-22

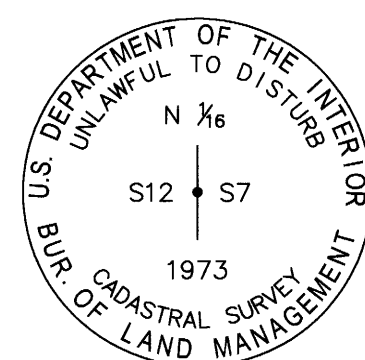
SCOTT TOLDNESS, PLS 90216, 2024
FOUND: (PER 1980) A 3 ¼" BLM BRASS CAP ON A 2 ½" DIAM. IRON POST, 0.4 FT. ABOVE GROUND,
WITH A ½" REBAR ALONG SIDE, FROM WHICH:
(PER 1980) A FIR, 20" DIAM., BEARS N1 ½°E, 31.0 FT. DIST., WITH HEALED BLAZE AND TAG BY JEJ 80,
(PER 1980) A FIR, 24" DIAM., BEARS S3°E, 18.8 FT. DIST., WITH HEALED BLAZE AND
TAG BY J JELLY 7/80.
ADDED PAINT, BLAZES, NAILS AT LEFT SIDE CENTER, AND TAGS TO REV. OF BTs.
ADDED POST NORTH, 5 FT., AND SOUTH, 5 FT., WITH BOUNDARY SIGNS.

T. 29 S., R. 8 W



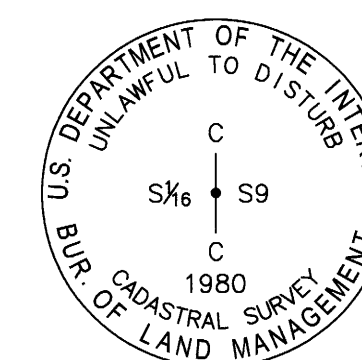
(W-3) (140160)
PREVIOUS RENEWALS/SURVEYS, ETC.:
(1964) - DCSO VOL. 32, PG. 13575

SCOTT TOLDNESS, PLS 90216, 2024
FOUND: (PER 1964) A 3 ¼" BLM BRASS CAP ON A 2 ½" DIAM. IRON POST, 0.3 FT. ABOVE GROUND, FROM WHICH:
(PER 1964) A DEAD STANDING FIR, 16" DIAM., BEARS N26°E (N25°E), 64.7 FT. DIST., WITH HEALED BLAZE AND
PARTIALLY ILLEGIBLE TAG BY JJ 7/64,
(PER 1964) A FIR, 28" DIAM., BEARS N53°W, 44.55 FT. DIST. TO A NAIL AT RIGHT SIDE CENTER,
WITH HEALED BLAZE AND TAG BY JJ 7/64,
(PER 1964) A FIR, 48" DIAM., BEARS N55°W, 44.1 FT. DIST. TO A NAIL AT CENTER, WITH HEALED BLAZE.
SET: A FIR, 10" DIAM., BEARS N81 ½°E, 10.97 FT. DIST. TO A NAIL AT RIGHT SIDE CENTER, SCRIBED "CN1/16S31BT,"
WITH LS WASHER AND TAG BY 90216 1/3/25.
ADDED PAINT, BLAZES, NAILS (PER ABOVE LOCATIONS), TAGS TO REV. OF LIVE BTs.
ADDED POST EAST, 5 FT., AND WEST, 5 FT.



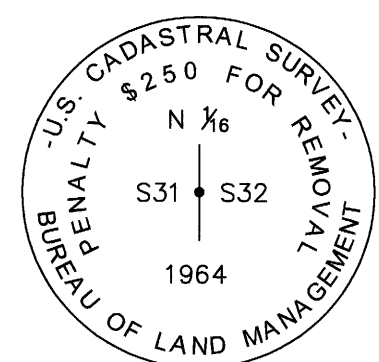
(F-1) (100560)
PREVIOUS RENEWALS/SURVEYS, ETC.:
(1973-1976) - DCSO VOL. 39, PG. 15753

SCOTT TOLDNESS, PLS 90216, 2024
FOUND: (PER 1973) A 3 ¼" BLM BRASS CAP ON A 2 ½" DIAM. IRON POST, 0.6 FT. ABOVE GROUND,
FROM WHICH:
(PER 1973) A FIR, 21" DIAM., BEARS N79 ½°E (S79 ½°W), 33.7 FT. (19 LKS.) DIST. TO A NAIL AT LEFT SIDE CENTER,
WITH HEALED BLAZE AND TAG,
(PER 1973) A FIR, 21" DIAM., BEARS S64 ½°W (N64 ½°E), 12.5 FT. (51 LKS.) DIST. TO A NAIL AT RIGHT SIDE CENTER,
WITH HEALED BLAZE.
ADDED PAINT, BLAZES, NAILS (PER ABOVE LOCATIONS), TAGS TO REV., AND REPLACED TAGS ON BTs.
ADDED POST EAST, 5 FT., AND NORTH, 5 FT., WITH BOUNDARY SIGNS.



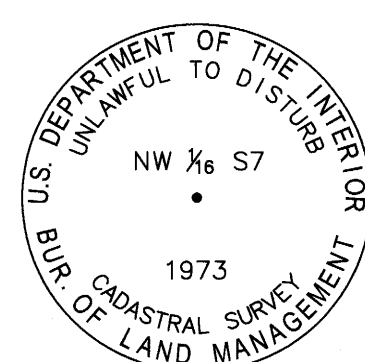
(H-11) (340520)
PREVIOUS RENEWALS/SURVEYS, ETC.:
(1980) - DCSO VOL. 44, PG. 17010
(1986) - DCSO CS FILE 63/9-15

SCOTT TOLDNESS, PLS 90216, 2024
FOUND: (PER 1980) A 3 ¼" BLM BRASS CAP ON A 2 ½" DIAM. IRON POST, 0.4 FT. ABOVE GROUND,
WITH A BENT ¾" (I.D.) IRON PIPE, 2.5 FT. TALL, BEARING S30°W, 1.5 FT. DIST., FROM WHICH:
(PER 1980) A FIR, 24" DIAM., BEARS N58 ½°W, 13.53 FT. DIST., WITH HEALED BLAZE,
(PER 1980) A FIR STUMP, 24" DIAM., 0.6 FT. TALL, BEARS S72 ¼°E, 45.5 FT. (69 LKS.) DIST.
SET: A FIR, 12" DIAM., BEARS S69 ¼°E, 28.1 FT. DIST. TO A NAIL IN LEFT SIDE CENTER,
SCRIBED "CS ½ S9BT," WITH LS WASHER AND TAG BY 90216 10/24,
ADDED POST SOUTH, 5 FT., AND EAST, 5 FT., WITH BOUNDARY SIGNS.



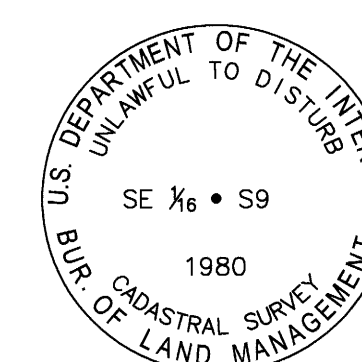
(W-5) (200160)
PREVIOUS RENEWALS/SURVEYS, ETC.:
(1964) - DCSO VOL. 32, PG. 13571

SCOTT TOLDNESS, PLS 90216, 2024
FOUND: (PER 1964) A 3 ¼" BLM BRASS CAP ON A 2 ½" DIAM. IRON POST, 0.2 FT. ABOVE GROUND, WITH A T-POST
BEARS N45°E, 0.4 FT., FROM WHICH:
(PER 1964) A FIR, 48" DIAM., BEARS S77°E, 48.5 FT. DIST. TO A NAIL AT RIGHT SIDE, WITH HEALED BLAZE
AND TAG BY "M 4/59."
(PER 1964) A FIR, 28" DIAM., BEARS N55°W, 44.1 FT. DIST. TO A NAIL AT CENTER, WITH HEALED BLAZE.
ADDED PAINT, BLAZES, NAILS (PER ABOVE LOCATIONS), TAGS TO REV., AND REPLACED TAGS ON BTs.



(F-2) (120560)
PREVIOUS RENEWALS/SURVEYS, ETC.:
(1973-1976) - DCSO VOL. 39, PG. 15776-15777

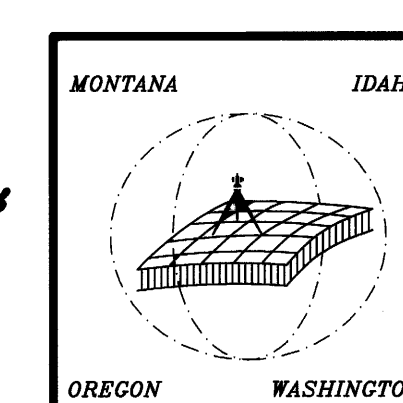
SCOTT TOLDNESS, PLS 90216, 2024
FOUND: (PER 1973) A 3 ¼" BLM BRASS CAP ON A 2 ½" DIAM. IRON POST, 0.5 FT. ABOVE GROUND,
FROM WHICH:
(PER 1973) A CEDAR, 20" DIAM., BEARS N55 ¼°E, 17.16 FT. DIST. TO A NAIL AT LEFT SIDE CENTER,
WITH HEALED BLAZE AND TAG BY AKIN 4/73,
SET: A FIR, 9" DIAM., BEARS S58°E, 10.8 FT. DIST. TO A NAIL AT RIGHT SIDE CENTER,
SCRIBED "NW1/16S7BT," WITH LS WASHER AND TAG "90216 12/19/24."
ADDED PAINT, BLAZE, AND NAIL (PER ABOVE LOCATION) TO THE FOUND CEDAR,
AND BT TAG TO REV.
ADDED POST SOUTH, 5 FT., AND WEST, 5 FT.



(H-12) (360520)
PREVIOUS RENEWALS/SURVEYS, ETC.:
(1980) - DCSO VOL. 44, PG. 17012-17013

SCOTT TOLDNESS, PLS 90216, 2024
FOUND: (PER 1980) A 3 ¼" BLM BRASS CAP ON A 2 ½" DIAM. IRON POST, 0.2 FT. ABOVE GROUND,
FROM WHICH:
(PER 1980) A FIR, 36" DIAM., BEARS N43°E, 14.5 FT. DIST., WITH HEALED BLAZE AND TAG BY ERR 80,
(PER 1980) A FIR, 21" DIAM., BEARS N11°W, 33.0 FT. DIST., WITH HEALED BLAZE AND TAG BY JEJ 80,
ADDED PAINT, NAILS AT LEFT SIDE CENTER, AND TAGS ON REV. OF BTs.
ADDED POST NORTH, 5 FT., AND WEST, 5 FT., WITH BOUNDARY SIGNS.

REGISTERED
PROFESSIONAL
LAND SURVEYOR
Scott L. Toldness
OREGON
MAY 20, 2015
SCOTT L. TOLDNESS
90216PLS
EXPIRES: 06/30/2026



FY2024
BOUNDARY LINE SURVEY - RBDO
DRAWING: 24-033A BLM ROSEBURG ROS
GLAHE & ASSOCIATES
PROFESSIONAL LAND SURVEYORS
303 Church Street
Sandpoint, Idaho 83864
208-265-4474
Scale: N/A
Checked By: SLT
Plot Date: 2/13/2025
Drawn By: SWO
Sheet: 2 of 2