

MAP FILE M184-70A

FILED

Date: 4-10-2025 By: [Signature]
This survey consist of:
Map: M184-70A-D
Narrative:
Corner Rpt: DOUGLAS COUNTY SURVEYOR

SE1/4 & SW1/4 SECTION 16, T.25S., R.5W., W.M. SE1/4 & SW1/4 SECTION 17, T.25S., R5W., W.M.
NW1/4 SECTION 20, T.25S., R5W., W.M. NE1/4 SECTION 19, T.25S., R.5W., W.M.

SHEET INDEX:

- 1 CONTROL NARRATIVE, SHEET LAYOUT, SURVEY NARRATIVE NETWORK DIAGRAM
- 2-3 SURVEY SHEETS
- 4 CONTROL POINT TABLE, RECOVERED MONUMENT TABLE AND LINE LEGEND

CONTROL INFORMATION

SURVEY DATUM- PER OAR 734-005-015 OREGON COORDINATE REFERENCE SYSTEM (OCRS): COTTAGE GROVE - CANYONVILLE ZONE NAD83(2011) EPOCH 2010 (INTERNATIONAL FEET)

EQUIPMENT- THE FIELD WORK FOR THIS PROJECT WAS INITIATED IN MAY OF 2024 AND CARRIED ON INTERMITTENTLY THROUGH OCTOBER OF 2024. EQUIPMENT UTILIZED TO PERFORM THE FIELD WORK INCLUDES: 2 LEICA GS18T GNSS RECEIVER, 1 LEICA TS16 TOTAL STATION, 2 LEICA CS20 DATA COLLECTORS AND 1 LEICA LS15 DIGITAL LEVEL.

PROJECT CONTROL AND BASIS OF BEARINGS:

ALL BEARINGS FOR THIS SURVEY ARE BASED ON THE OREGON COORDINATE REFERENCE SYSTEM (OCRS), COTTAGE GROVE - CANYONVILLE ZONE, NAD83 (2011), EPOCH 2010. ALL COORDINATES ARE IN INTERNATIONAL FEET.

CONTROL WAS ESTABLISHED AT EACH SITE UTILIZING A MINIMUM OF 2 REDUNDANT 60 EPOCH GNSS OBSERVATIONS WHILE CONNECTED TO THE ORGN (OBSERVATIONS WERE SEPARATED BY AT LEAST 30 MINUTES AND IN ACCORDANCE WITH ODOT'S SURVEY POLICY AND PROCEDURES MANUAL); ANGLES WERE THEN TURNED BETWEEN CONTROL POINTS USING THE LEICA TOTAL STATION (IN ACCORDANCE WITH ODOT'S SURVEY POLICY AND PROCEDURES MANUAL) AND LEVELS WERE THEN RUN HOLDING THE NAVD88 ELEVATION (GPS DERIVED - GEOID12A) ON ONE CONTROL POINT PER SITE; CENTRAL AVE. BETWEEN KRUSE ST. AND GRANT ST. (ABBY'S) SITE HELD #801 AND CENTRAL AVE. AT THE INTERSECTION OF MARDONNA ST. (LES SCHWAB'S) SITE HELD #804. A LEAST SQUARE ADJUSTMENT WAS THEN PERFORMED ON THE CONTROL TO COME UP WITH THE ADJUSTED COORDINATE VALUES FOR THE CONTROL POINTS.

CONTROL POINTS FOR THIS SURVEY WERE NOT SET ON AND DO NOT REPRESENT PROPERTY OR RIGHT OF WAY LINES AND ARE INTENDED FOR THE USE BY ODOT IN SUPPORT OF THIS PROJECT. IT IS NOT THE INTENT OF ODOT TO PERPETUATE THESE CONTROL POINT AS MONUMENTS.

SURVEY NARRATIVE:

THIS SURVEY WAS MADE AS A RESULT OF THE OREGON DEPARTMENT OF TRANSPORTATION'S PROJECT NAMED "CENTRAL AVE. PEDESTRIAN IMPROVEMENTS (SUTHERLIN) PROJECT." THE PURPOSE OF THIS SURVEY IS TO RECORD THE POSITIONS OF MONUMENTS OF RECORD, RESOLVE THE EXISTING RIGHT OF WAY (R/W) CENTERLINE AND DEFINE THE EXISTING RIGHT OF WAY LINES AS DIRECTED IN OREGON REVISED STATUTES (ORS) 209.155.

THE SCOPE OF THIS PROJECT IS FOR THE PURPOSE OF PEDESTRIAN IMPROVEMENTS AT TWO SITES ALONG CENTRAL AVE. IN SUTHERLIN. ONE SITE IS ALONG CENTRAL AVE. BETWEEN KRUSE ST. AND GRANT ST. AND THE OTHER SITE IS AT THE INTERSECTION OF CENTRAL AVE. AND MARDONNA ST.

SURVEY NARRATIVE (CONT.):

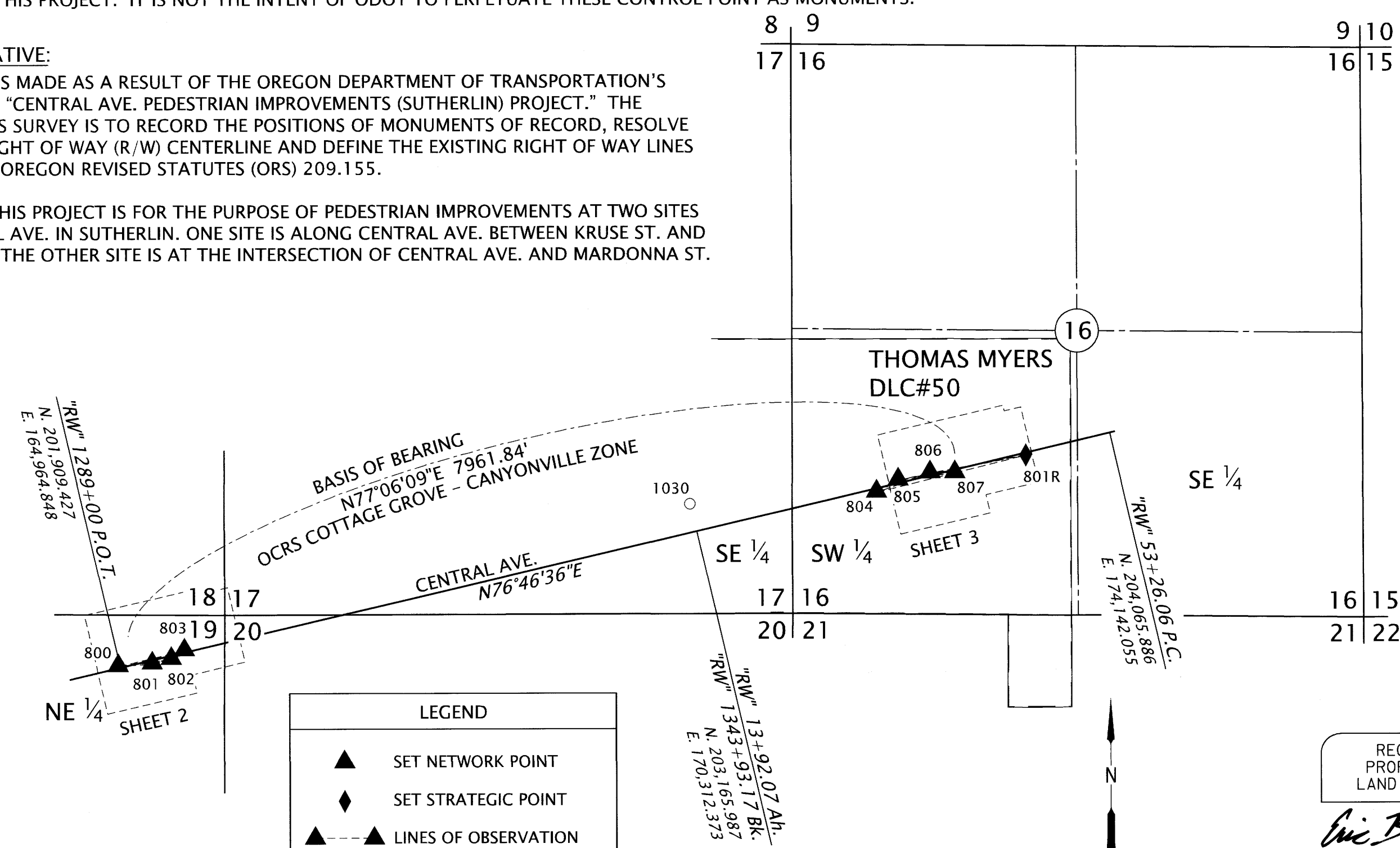
CENTRAL AVENUE RIGHT OF WAY RETRACEMENT:

CENTRAL AVE. WAS ORIGINALLY DEDICATED AS A STREET FOR PUBLIC USE PER SUBDIVISION PLATS AS EVIDENCED BY: VOL.1, PG.59: PLAT -A- SUTHERLIN LAND AND WATER CO. AND VOL.3, PG.20: AMENDED PLAT OF THE TOWNSITE OF SUTHERLIN (TO THE EAST OF THE RAILROAD TRACKS); VOL.4, PG.57: PLAT - O BLOCKS 1, 2, 3, 4, 5, 19 & 20 AND VOL.4, PG.14: AMENDED PLAT OF PLAT - O BLOCKS 6 TO 18 (TO THE WEST OF THE RAILROAD TRACKS) FILED IN THE DOUGLAS COUNTY SURVEYOR'S OFFICE AND RECORDED IN THE DOUGLAS COUNTY CLERKS OFFICE. ADDITIONAL R/W WAS ACQUIRED TO THE EAST ALONG CENTRAL AVE. BETWEEN WILLAMETTE STREET AND ST. JOHN STREET AS EVIDENCED BY THE 1973 DOUGLAS COUNTY ROAD NO.19 MAP NOS. 00190059 AND 00590116 AND THE ASSOCIATED DEEDS FILED IN THE DOUGLAS COUNTY SURVEYOR'S OFFICE AND RECORDED IN THE DOUGLAS COUNTY CLERKS OFFICE. ADDITIONAL R/W WAS ACQUIRED TO THE WEST ALONG CENTRAL AVE. FROM BETWEEN ROBINSON AVE. AND HAWTHORNE ST. TOWARDS INTERSTATE 5 AS EVIDENCED BY ODOT R/W DRG. #7B-12-4 AND ASSOCIATED DEEDS.

A THOROUGH SEARCH WAS MADE FOR ORIGINAL CONTROLLING PLAT CORNERS AS WELL AS MONUMENTS FROM FILED SURVEYS IN THE AREA OF BOTH SITES BUT WITH THE LACK OF GOOD EVIDENCE THE SEARCH AREA WAS EXPANDED TO INCLUDE THE AREA BETWEEN THE TWO SITES AND BEYOND BOTH SITES. THE FOUND MONUMENTS WERE EITHER TIED WITH THE LEICA TOTAL STATION OR THEY WERE TIED UTILIZING A MINIMUM OF 2 REDUNDANT 60 EPOCH GNSS OBSERVATIONS WHILE CONNECTED TO THE ORGN, SEPARATED BY A MINIMUM OF 30 MINUTES (BOTH IN ACCORDANCE WITH ODOT'S SURVEY POLICY AND PROCEDURES MANUAL).

AFTER ANALYZING THE EVIDENCE AVAILABLE IT WAS DETERMINED THAT A SINGLE TANGENT CENTERLINE ALONG CENTRAL AVE., CONNECTING BOTH SITES, APPEARED TO BE THE ORIGINAL INTENT BECAUSE IT FIT THE ROADWAY THE BEST AND BEST FIT THE MAJORITY OF THE FOUND MONUMENTS THROUGHOUT THE LENGTH OF THE TANGENT.

THE RIGHT OF WAY CENTERLINE FOR CENTRAL AVE. WAS RETRACED BY RESOLVING THE TANGENT BETWEEN STATIONS 1289+00 P.O.T. and 53+26.06 P.C. BY HOLDING THE RECORD OFFSET OF 30' AT POINT NO. 1000 AND SPLITTING THE RECORD OFFSETS OF 40' AT POINT NO. 1016 AND 35' AT POINT NO. 1015, AS SHOWN HEREON. BY HOLDING THOSE OFFSETS AND MONUMENTS THE TANGENT ALSO FITS THE RECORD OFFSET OF 260' (TO THE CENTER OF THE RECORD 80' R/W WIDTH) AT POINT NO. 1030 (THE NORTHEAST CORNER OF BLOCK 24 OF RECORD PLAT VOL.3, PG.20) WITHIN 0.02'. FROM THE SAID POINTS THAT WERE HELD, THE ESTABLISHED TANGENT WAS THEN EXTEND IN BOTH DIRECTION TO THE STATIONING STATED ABOVE. STATIONING, BEGINNING AT THE WESTERLY END OF THIS TANGENT, WAS HELD AT THE INTERSECTION OF THE CENTERLINE OF GRANT ST. (WHICH WAS ESTABLISHED BY HOLDING THE RECORD OFFSET OF 25' AT POINT NO. 1004 AND THE RELATIVE RECORD BEARING OF GRANT ST. FROM RECORD PLAT VOL.9, PG.18) AND THE CENTERLINE OF CENTRAL AVE.; WITH THE RECORD STATIONING BEING 1294+58.72 P.O.T. (AS SHOWN ON ODOT DRG. NO. 7B-24-11). A STATION EQUATION WAS PLACED AT 1343+93.17 (BK.) = 13+92.07 P.O.T. (Ah.) TO EQUATE THIS STATIONING WITH THE STATIONING SHOWN ON THE 1973 DOUGLAS COUNTY ROAD NO.19 MAP NOS. 00190059 AND 00590116. THE LOCATION OF THIS EQUATION STATION WAS DETERMINED BY WORKING BACK FROM THE RECORD STATION OF 53+26.06 P.C. BOTH FILED SURVEYS M49-17, M110-1 AND LAND PARTITION PLAT NO. 1995-0080 HAD TIES TO THE MONUMENT ON THE NORTHERN SIDE OF CENTRAL AVE. AT RECORD STATION OF 53+26.06 P.C., SAID STATIONING WAS HELD AT A DISTANCE OF 871.20' FROM POINT NO. 1016 (AS SHOWN ON LAND PARTITION PLAT NO. 1995-0080) THIS MATCHED WELL WITH THE TIE FROM POINT NO. 1017 SHOWN ON FILED SURVEY M110-1.



LEGEND	
▲	SET NETWORK POINT
◆	SET STRATEGIC POINT
▲---▲	LINE OF OBSERVATION
○	FOUND MONUMENT
SEE SHEET 4 FOR CONTROL & MONUMENT TABLE	

REGISTERED PROFESSIONAL LAND SURVEYOR
Eric B. Hibbs
 OREGON NOVEMBER 13, 2018
 ERIC BENJAMIN HIBBS 90437PLS
 RENEWS: 06/30/2025

OREGON DEPARTMENT OF TRANSPORTATION
 HORIZONTAL CONTROL, RECOVERY AND RETRACEMENT MAP
 CENTRAL AVE. PEDESTRIAN IMPROVEMENTS (SUTHERLIN) PROJECT
 CENTRAL AVENUE DOUGLAS COUNTY

ODOT REGION 3 TECH CENTER
 3500 NW STEWART PKWY.
 ROSEBURG, OR 97470 KEY NO. K22889

APRIL 10, 2025
 SCALE: NTS
 SHEET 1 OF 4

1020
NW COR. JOSEPH HOLMAN DLC NO. 37

MAP FILE M184-70A

BASIS OF BEARING, CONTROL NETWORK & SHEET LAYOUT SCHEMATIC
NOT TO SCALE