

MAP OF SURVEY

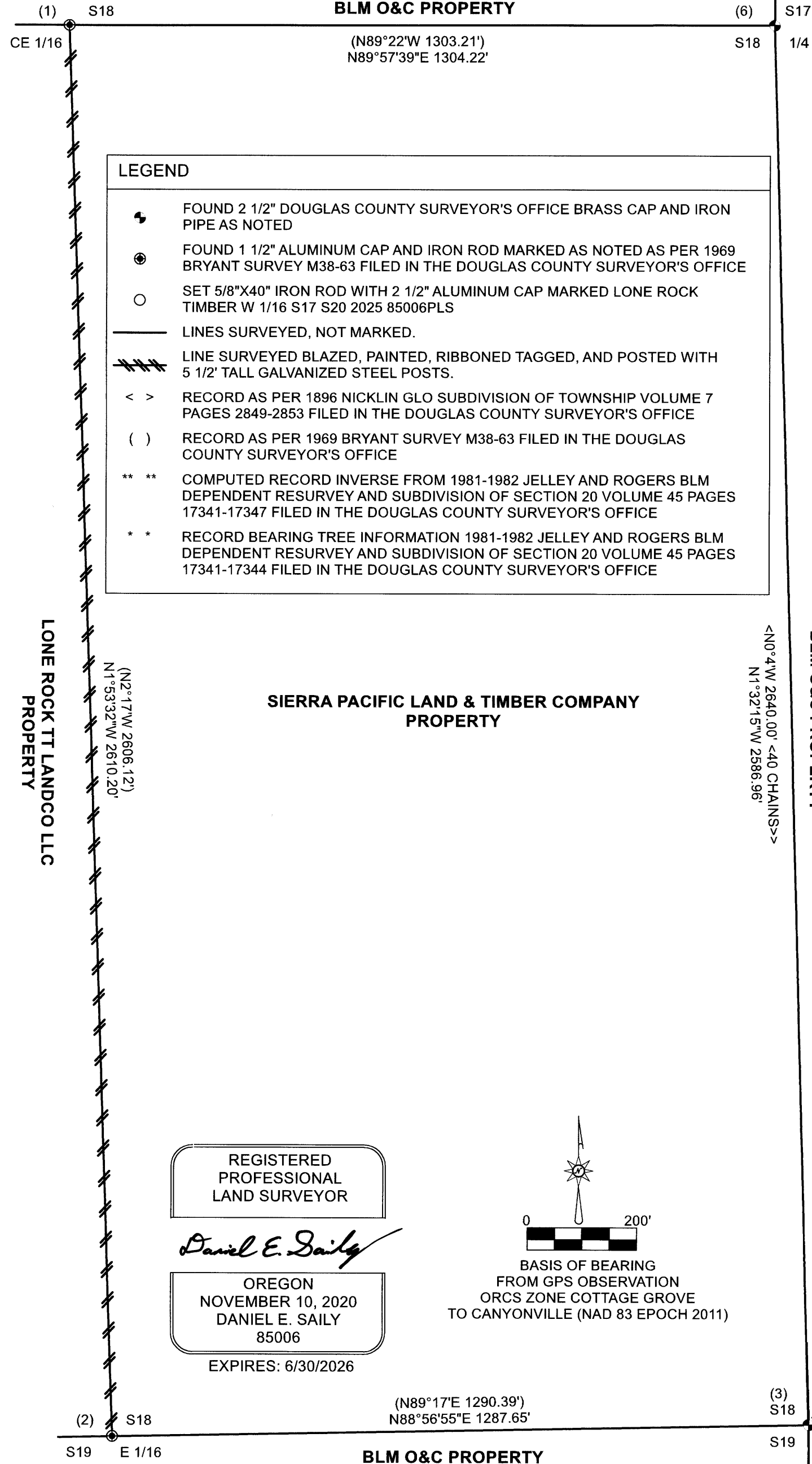
THE EAST HALF OF THE SOUTHEAST QUARTER OF SECTION 18 AND THE NORTH HALF OF THE NORTHWEST QUARTER OF SECTION 20, TOWNSHIP 24 SOUTH, RANGE 1 WEST WILLAMETTE MERIDIAN DOUGLAS COUNTY, OREGON

SURVEY FOR: LONE ROCK TT LANDCO LLC
P.O. BOX 1127 ROSEBURG, OREGON 97470
SURVEY BY: LONE ROCK TIMBER MANAGEMENT LLC
P.O. BOX 1127 ROSEBURG, OREGON 97470

DATE: FEBRUARY 2025 TRACTS: F240118 & F240120

FILED
DATE: 2-13-2025 BY: [Signature]
THIS SURVEY CONSISTS OF:
MAP: M184-56
NARRATIVE:
CORNER RPT:
DOUGLAS COUNTY SURVEYOR

MAP FILE M184-56



NARRATIVE:

THE PURPOSE OF THIS SURVEY IS TO MARK PROPERTY LINES FOR THE LONE ROCK TT LANDCO, LLC. PROPERTY LOCATED IN SECTIONS 18 AND 20, TOWNSHIP 24 SOUTH RANGE 1 WEST W.M., FOR TIMBER MANAGEMENT PURPOSES. WE BEGAN THIS SURVEY BY SEARCHING FOR ALL KNOWN MONUMENTS: (CORNERS 1, 2, 3, 5, AND 6) RELEVANT TO OUR SURVEY. IN 1969, SECTION 18, WAS PROPERLY SUBDIVIDED BY DENNIS BRYANT IN SURVEY M38-63 FILED IN THE DOUGLAS COUNTY SURVEYOR'S OFFICE AND THE COMMON LINE BETWEEN THE SIERRA PACIFIC LAND & TIMBER COMPANY AND LONE ROCK TT LANDCO, LLC PROPERTIES WAS MARKED. THE WEST HALF OF THE SECTION LINE BETWEEN SECTION 17 AND 20 HAS NO RECORD OF BEING SURVEYED OR MARKED AFTER THE ORIGINAL 1896 GLO SURVEY BY CARL NICKLIN. HOWEVER, WE FOUND SCATTERED EXISTING BLAZES ALONG THE LINE BETWEEN SECTIONS 17 AND 20. A 1981-1982 BLM DEPENDENT RESURVEY AND SUBDIVISION OF SECTION 20 TIED AND PERPETUATED BOTH THE SECTION CORNER OF SECTIONS 17, 18, 19 AND 20 (CORNER 3) AND THE QUARTER CORNER OF SECTIONS 17 AND 20 (CORNER 5). WE COMPUTE THE RECORD INVERSE FROM THE 1981-1982 BLM RESURVEY AND SHOW THE RESULT HEREON. CORNERS 3, 5, AND 6 ARE PERPETUATION OF THE ORIGINAL GLO CORNERS, CONDUCTED BY THE DOUGLAS COUNTY SURVEYOR'S OFFICE, AS SHOWN IN THE RECORDS ON THIS MAP.

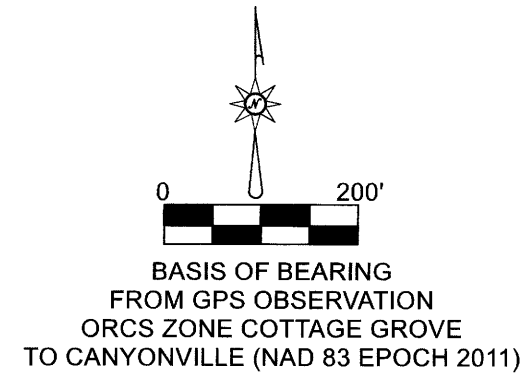
WE BEGAN OUR SURVEY AT A GPS CONTROL BASELINE WITH POINTS LOCATED ON A GRAVEL SURFACE LOGGING ROAD APPROXIMATELY 500' EASTERLY OF THE CENTER EAST 1/16TH OF SECTION 18 (CORNER 1) AND 60' SOUTHWESTERLY OF THE CORNER OF SECTIONS 17, 18, 19 AND 20 (CORNER 3) TO ESTABLISH COMMON CONTROL FOR OUR SURVEY IN BOTH SECTIONS 18 AND 20. WE THEN RAN A RANDOM TRAVERSE FROM THIS GPS CONTROL BASELINE THROUGH THE CENTER EAST 1/16TH OF SECTION 18 (CORNER 1), TO GPS CONTROL ON AND NEAR THE EAST 1/16TH OF SECTIONS 18 AND 19 (CORNER 2), AND CLOSED THIS TRAVERSE TO GPS CONTROL. WE ALSO RAN A RANDOM TRAVERSE FROM OUR ESTABLISHED GPS CONTROL BASELINE, THROUGH THE CORNER OF SECTIONS 17, 18, 19 AND 20 (CORNER 3) AND QUARTER CORNER OF SECTIONS 17 AND 20 (CORNER 5) AND CLOSED THIS TRAVERSE TO GPS CONTROL IN AN OPENING NEAR THE QUARTER CORNER OF SECTIONS 17 AND 20 (CORNER 5). DURING OUR SURVEY WE ALSO PERFORMED GPS OBSERVATIONS IN OPENINGS ON OUR RANDOM TRAVERSE POINTS IN SECTION 18 AND SECTION 20 TO CHECK OUR GPS AND TRAVERSE DATA. WE THEN SITE CALIBRATED OUR GPS DATA TO OUR TRAVERSE DATA IN TRIMBLE BUSINESS CENTER IN ORDER TO CONVERT OUR GPS DATA TO GROUND DISTANCES. WE BALANCED OUR TWO TOTAL STATION TRAVERSES INDEPENDENTLY. WE PROPERLY PROPORTIONED AND SET THE WEST 1/16TH OF SECTIONS 17 AND 20 (CORNER 4) IN ORDER TO MONUMENT THE COMMON LINE BETWEEN SECTIONS 17 AND 20 AND TO FACILITATE FUTURE SURVEYS OF THIS PROPERTY LINE, WHICH IS LOCATED ON VERY STEEP AND RUGGED TERRAIN. DURING THE COURSE OF THIS SURVEY, IT BECAME NECESSARY FOR US TO DETERMINE THE LOCATION OF AN EXISTING ROAD PROPERTY LINE CROSSING IN SECTION 18 BETWEEN THE SIERRA PACIFIC AND BLM O&C PROPERTIES ALONG THE EAST-WEST CENTERLINE OF SECTION 18. WE SEARCHED FOR AND FOUND THE MONUMENT FOR THE QUARTER CORNER OF SECTIONS 17 AND 18 (CORNER 6), BENT, LEANING, AND IN GENERALLY POOR CONDITION. WE CONTACTED THE DOUGLAS COUNTY SURVEYOR'S OFFICE AND THEY PERFORMED A CORNER RESTORATION OF THE QUARTER CORNER OF SECTIONS 17 AND 18 WHILE WE WERE CONDUCTING OUR SURVEY. WE THEN PERFORMED ADDITIONAL GPS OBSERVATIONS ON THE QUARTER CORNER OF SECTIONS 17 AND 18 (CORNER 6), AS RESTORED, AND TIED IT TO OUR EXISTING GPS CONTROL AND TRAVERSE DATA IN SECTIONS 18 AND 20 IN ORDER TO MAP THE LINES EXTENDING FROM THIS QUARTER CORNER FOR FUTURE REFERENCE BY LATER SURVEYS. WE ROTATED THIS SURVEY TO OUR GPS CONTROL BASELINE POINTS, WHICH WE HAD ALSO OBSERVED IN THE OREGON COORDINATE REFERENCE SYSTEM ZONE COTTAGE GROVE TO CANYONVILLE (NAD 83 EPOCH 2011) IN ORDER TO PROVIDE BASIS OF BEARING.

PROPERTY LINES SHOWN HEREON, AS MARKED, WERE QUARTER BLAZED AND PAINTED WITH RED PAINT, RED PROPERTY LINE RIBBON AND FLORESCENT BLUE RIBBON, 5 1/2-FOOT-TALL STEEL GALVANIZED POSTS, AND ALUMINUM PROPERTY LINE TAGS WERE PLACED AT INTERVALS ON TRUE PROPERTY LINE ON THESE LINES. BEARING TREES WERE SCRIBED AT ROOT CROWN WITH DISTANCES MEASURED TO AN ALUMINUM NAIL AT SIDE CENTER AND BEARINGS WERE COMPUTED BY TURNING HORIZONTAL ANGLES FROM TRAVERSE CONTROL POINTS TO AN ALUMINUM NAIL IN FACE CENTER. THIS SURVEY WAS CONDUCTED USING A TRIMBLE C5 TOTAL STATION, TRIMBLE R10 AND TRIMBLE R12I GNSS AND RTK RECEIVERS, UTILIZING A LOCAL BASE CORRECTED TO AN OPUS SOLUTION, AND SITE CALIBRATED WITH TRIMBLE BUSINESS CENTER SOFTWARE TO TOTAL STATION GROUND CONTROL. ALL OTHER COMPUTATIONS, CALCULATIONS AND MAPPING WERE PERFORMED IN TRAVERSE PC. BRETT RAGON, BRODIE MINTER, AND TREVOR CLEMO ASSISTED ME DURING THIS SURVEY.

CORNER NOTES:

- 1) CENTER EAST 1/16 CORNER OF SECTION 18, T24S R1W (PLSS 160440) FOUND 5/8" IRON ROD WITH ALUMINUM CAP MARKED CE 1/16 S18 AS PER SURVEY M38-63 FILED IN THE DOUGLAS COUNTY SURVEYOR'S OFFICE. -- FOUND 26" X 35" TALL SUGAR PINE SNAG BEARS N53°E 23.0' (RECORD N54°25'E 23.1'), WITH A VISIBLE SCRIBE "E 1/16 S18 BT", AND ROSEBURG LUMBER CO. TAG. -- FOUND UN-RECORDED 20" WESTERN HEMLOCK BEARS N8 1/2"E 16.5', TAG READS S12"W 16.5', WITH A WELL HEALED FACE AND ROSEBURG LUMBER CO. TAG. -- FOUND UN-RECORDED 32"X 1.5' TALL DOUGLAS-FIR STUMP BEARS S74 1/4"E 24.4', TAG READS N73"W 24.5', WITH NO VISIBLE FACE AND ROSEBURG LUMBER CO. TAG. -- NEW 8" DOUGLAS-FIR BEARS S34 1/2"W 18.4'. WE SCRIBE CE 1/16 S18 BT AND TAG. -- FOUND RECORD (26" DOUGLAS-FIR) AT RECORD (S82°25'W 6.3') TIPPED OVER AND OUT OF POSITION. CORNER MONUMENT LIES ON GENTLE WEST FACING SLOPE, IN MIXED AGE TIMBER STAND, APPROXIMATELY 250 FEET EAST OF GRAVEL SURFACED BLM LOGGING ROAD. AN OLD DOZER SKID TRAIL RUNNING EAST-WEST BEARS SOUTH APPROXIMATELY 35'. TOP OF MONUMENT IS 0.2' ABOVE GROUND LEVEL. WE PLACE A 5 1/2' TALL GALVANIZED, STEEL U-POST 1.0' NORTH.
2) EAST 1/16 CORNER TO SECTIONS 18 AND 19, T24S R1W (PLSS 160400) FOUND 5/8" IRON ROD WITH ALUMINUM CAP MARKED E 1/16 S18 S19 AS PER SURVEY M38-63 FILED IN THE DOUGLAS COUNTY SURVEYOR'S OFFICE. -- FOUND 27" DOUGLAS-FIR BEARS N49 1/2"W 20.8'. RECORD (N49°37'W 21.25') WITH A HEALED FACE. WE TAG. -- FOUND 30" DOUGLAS-FIR BEARS S74 3/4"E 19.4'. RECORD (S74°53'E 20.28') WITH A HEALED FACE. WE TAG. CORNER MONUMENT LIES ON STEEP, ROCKY WEST FACING SLOPE APPROXIMATELY 200 FEET EAST OF DRAW RUNNING NORTHWEST. TOP OF MONUMENT IS 0.1' ABOVE GROUND LEVEL. WE PLACE A 5 1/2' TALL GALVANIZED, STEEL U-POST 1.0' NORTH.
3) THE CORNER OF SECTIONS 17, 18, 19 AND 20, T24S R1W (PLSS 200400) FOUND 2 1/2" DOUGLAS COUNTY SURVEYOR'S BRASS CAP AND IRON PIPE MARKED COUNTY SURVEYOR'S OFFICE T24S R1W S18, S17, S19, S20 1961 AS PER CS 52/42-9 FILED IN THE DOUGLAS COUNTY SURVEYOR'S OFFICE. -- FOUND 16" WESTERN HEMLOCK BEARS S5 3/4"E 25.8', RECORD *S5 1/2"E 26.4' / 40 LINKS*, WITH A WELL HEALED FACE. WE TAG. -- FOUND 24"x 7" TALL DOUGLAS-FIR STUMP BEARS S63 1/4"E 15.7', RECORD *S63°E 15.84' / 24LINKS*, WITH A WELL HEALED FACE AND BLM TAG. -- FOUND 16" WESTERN HEMLOCK BEARS S49 1/4"W 8.3', RECORD *S49°W 8.58' / 13 LINKS*, WITH A WELL HEALED FACE AND BLM TAG. -- FOUND 16" WESTERN HEMLOCK BEARS N73 1/4"W 28.5', RECORD *N73 1/2"W 28.38' / 43 LINKS*, WITH A WELL HEALED FACE. WE TAG. -- FOUND 25"x 5.5" TALL DOUGLAS-FIR STUMP BEARS N51 1/4"W 9.8', RECORD *N47°W 9.9' / 15 LINKS*, WITH A VISIBLE SCRIBE "S18" AND BLM TAG. -- FOUND 21"x 8" TALL DOUGLAS-FIR STUMP BEARS N70 1/4"E 28.8', RECORD *N70°E 29.04' / 44 LINKS*, WITH A WELL HEALED FACE AND BLM TAG. CORNER MONUMENT LIES ON A STEEP NORTHWEST FACING SLOPE IN MIXED AGE TIMBER STAND, APPROXIMATELY 150' SOUTH OF GRAVEL SURFACED BLM LOGGING ROAD. TOP OF MONUMENT IS 0.7' ABOVE GROUND LEVEL. WE PLACE A 5 1/2' TALL GALVANIZED, STEEL U-POST 1.0' NORTH.
4) WEST 1/16 CORNER OF SECTIONS 17 AND 20 T24S R1W (PLSS 220400) SET 5/8" X 36" IRON ROD WITH 2 1/2" ALUMINUM CAP MARKED LONE ROCK TIMBER W 1/16 S17 S20 2025 85006PLS. -- NEW 22" DOUGLAS-FIR BEARS S21 1/2"E 23.9'. WE SCRIBE W16 S20 BT AND TAG. -- NEW 12" DOUGLAS-FIR BEARS N36 1/4"W 18.5'. WE SCRIBE W16 S17 BT AND TAG. CORNER MONUMENT LIES ON A SOUTH FACING SLOPE IN MIXED AGE TIMBER STAND, 70' NORTH OF CENTERLINE OF GRAVEL SURFACED BLM LOGGING ROAD AND APPROXIMATELY 100' N30°W OF CENTER OF LOGGING LANDING. TOP OF MONUMENT IS 0.8' ABOVE GROUND LEVEL. WE PLACE A MOUND OF STONE AROUND MONUMENT AND A 5 1/2' TALL GALVANIZED, STEEL U-POST 1.0' NORTH.
5) QUARTER CORNER OF SECTIONS 17 AND 20, T24S R1W (PLSS 240400) FOUND 2 1/2" DOUGLAS COUNTY SURVEYOR'S BRASS CAP AND IRON PIPE MARKED COUNTY SURVEYOR'S OFFICE T24S R1W 1/4 S17 S20 1962 AS PER CS 52/42-18 FILED IN THE DOUGLAS COUNTY SURVEYOR'S OFFICE. -- FOUND 12" DOUGLAS-FIR BEARS N8 1/4"E 15.6', RECORD *N8 1/2"E 15.51' / 23 1/2 LINKS* WITH A HEALED FACE. WE TAG. -- FOUND 24"x6" TALL DOUGLAS-FIR STUMP BEARS S21 3/4"W 25.9', RECORD *S22°W 27.06' / 41 LINKS*, WITH A HEALED FACE AND BLM TAG. -- NEW 8" DOUGLAS-FIR BEARS S9°E 41.7'. WE SCRIBE 1/4 S20 BT AND TAG. -- NEW 12" DOUGLAS-FIR BEARS N71 1/4"W 18.5'. WE SCRIBE 1/4 S17 X BT AND TAG. -- NEW 18" DOUGLAS-FIR BEARS S35°W 14.5'. WE SCRIBE 1/4 S20 BT AND TAG. CORNER MONUMENT LIES ON STEEP WEST FACING SLOPE IN MIXED AGE TIMBER STAND APPROXIMATELY 250' EAST OF A CREEK RUNNING NORTH-SOUTH. TOP OF MONUMENT IS 1.1' ABOVE GROUND LEVEL. WE PLACE A 5 1/2' TALL GALVANIZED, STEEL U-POST 1.0' NORTH.
6) QUARTER CORNER OF SECTIONS 17 AND 18, T24S R1W (PLSS 200440) FOUND 2 1/2" DOUGLAS COUNTY SURVEYOR'S OFFICE BRASS CAP AND IRON PIPE MARKED COUNTY SURVEYOR'S OFFICE T24S R1W 1/4 S18 S17 1962 AS PER CS 52/42-20 FILED IN THE DOUGLAS COUNTY SURVEYOR'S OFFICE. --WE FIND THIS CORNER AND IT'S ACCESSORIES AS PER DECEMBER 2024 DOUGLAS COUNTY SURVEYOR'S OFFICE CORNER RESTORATION CS 67/59-27 FILED IN THE DOUGLAS COUNTY SURVEYOR'S OFFICE.

REGISTERED PROFESSIONAL LAND SURVEYOR
Daniel E. Saily
OREGON NOVEMBER 10, 2020 DANIEL E. SAILY 85006
EXPIRES: 6/30/2026



MAP FILE M184-56