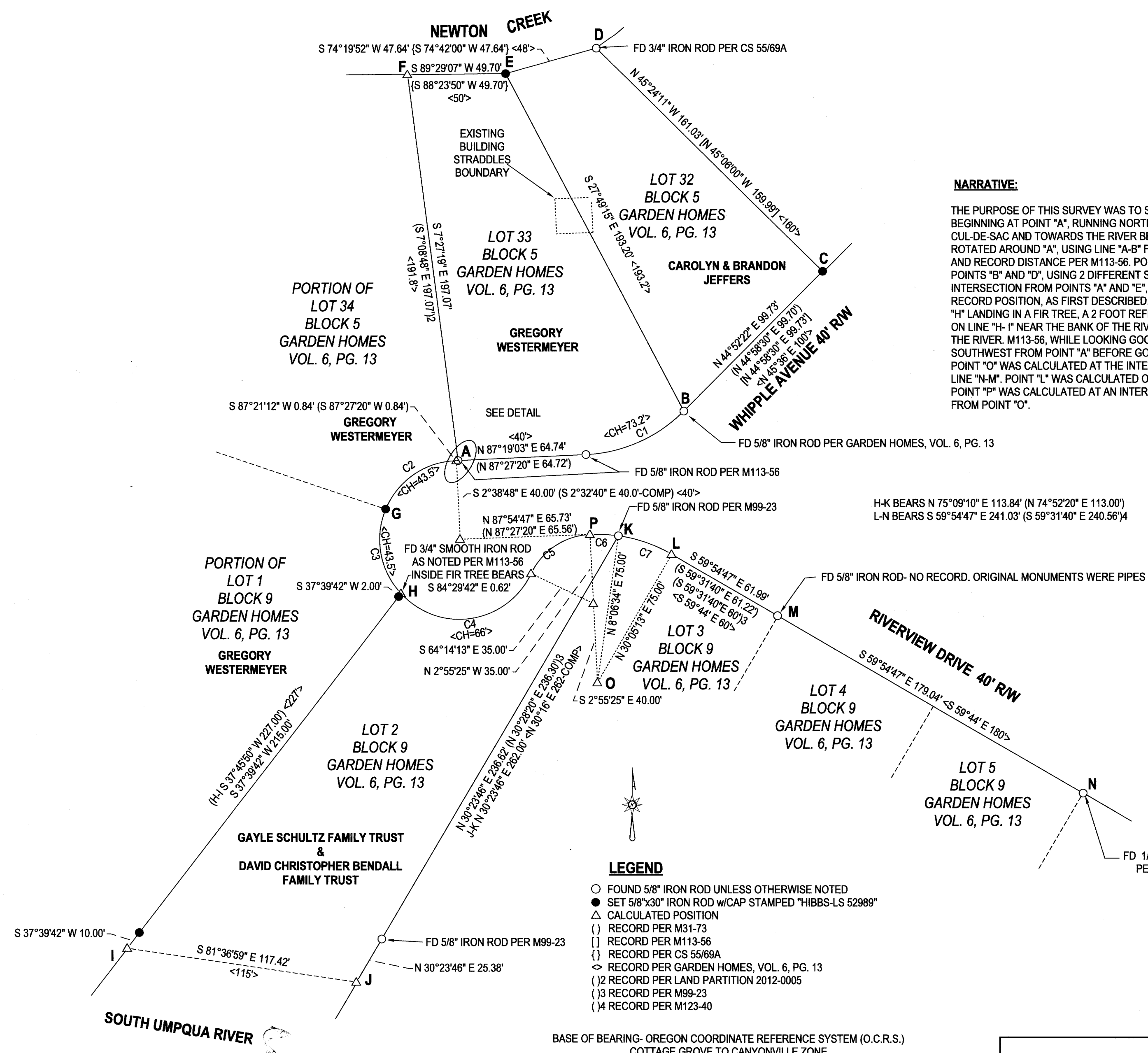


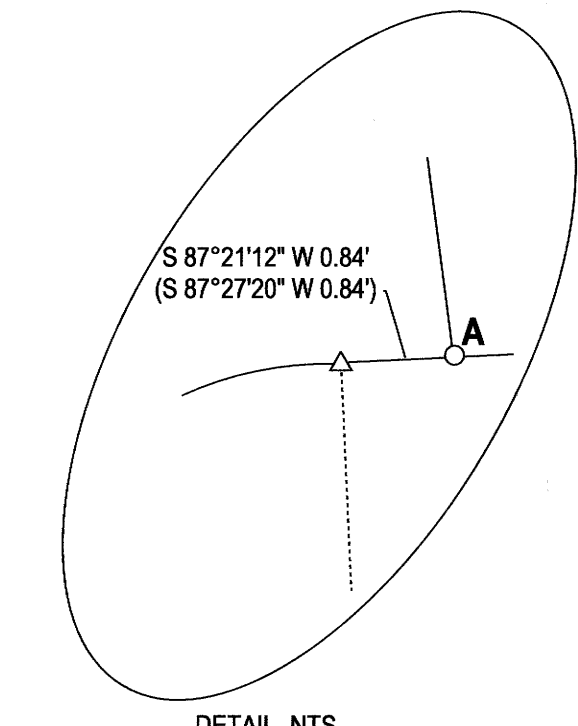
FILED
 Date: 1-28-2025 By: [Signature]
 This survey consists of:
 Map: M184-53
 Narrative:
 Corner Rept.:
 DOUGLAS COUNTY
 SURVEYOR

MAP FILE M184-53



NARRATIVE:

THE PURPOSE OF THIS SURVEY WAS TO SET MONUMENTS THAT WERE MISSING AS SHOWN. M31-73 WAS CALCULATED, BEGINNING AT POINT "A", RUNNING NORTHEASTERLY TO POINT "C", BACK TO POINT "A", COUNTERCLOCKWISE AROUND THE CUL-DE-SAC AND TOWARDS THE RIVER BETWEEN LOTS 1 AND 2 OF GARDEN HOMES. THIS COMPUTED M31-73 WAS THEN ROTATED AROUND "A", USING LINE "A-B" FOR ORIENTATION. POINT "C" WAS SET AT ROTATED RECORD BEARING, AS ABOVE, AND RECORD DISTANCE PER M113-56. POINT "E" WAS SET AT A DISTANCE-DISTANCE INTERSECTION FROM FOUND RODS AT POINTS "B" AND "D", USING 2 DIFFERENT SURVEYS AS NOTED. POINT "F" WAS COMPUTED AT A DISTANCE-DISTANCE INTERSECTION FROM POINTS "A" AND "E", AGAIN USING 2 DIFFERENT SURVEYS AS NOTED. POINT "G" WAS SET AT ROTATED RECORD POSITION, AS FIRST DESCRIBED. POINT "H" WAS CALCULATED AT ROTATED RECORD POSITION PER M31-73. POINT "H" LANDING IN A FIR TREE, A 2 FOOT REFERENCE MONUMENT WAS SET ON LINE "H-I" AND A LINE MONUMENT WAS ALSO SET ON LINE "H-I" NEAR THE BANK OF THE RIVER, THE MONUMENT SET PER M31-73 APPARENTLY HAVING BEEN WASHED OUT BY THE RIVER. M113-56, WHILE LOOKING GOOD FROM "A" TO POINT "C", NEGLECTED TO EXTEND THE TANGENT 0.84 FEET TO THE SOUTHWEST FROM POINT "A" BEFORE GOING INTO THE CUL-DE-SAC PER M31-73 SO THAT PORTION OF M113-56 WAS IGNORED. POINT "O" WAS CALCULATED AT THE INTERSECTION OF A 75.00 FOOT DISTANCE FROM POINT "K" AND A 75.00 FOOT OFFSET FROM LINE "N-M". POINT "L" WAS CALCULATED ON LINE "N-M" ON A BEARING FROM POINT "O" EXTENDED PERPENDICULAR TO LINE "N-M". POINT "P" WAS CALCULATED AT AN INTERSECTION OF THE RECORD 14.44 ARC EXTENDED FROM "K" AND THE 75.00 FOOT DISTANCE FROM POINT "O".



LINE	BEARING	DISTANCE	RADIUS	ARC LENGTH	DELTA
C1	N 66°08'16" E (N 66°13'00" E)	54.26' 54.34'	75.00'	55.52'	42°25'01"
C2	S 55°34'52" W (S 55°41'00" E)	43.50'	40.00'	45.99'	65°52'43"
C3	S 10°18'28" E (S 10°12'20" E)	43.50'	40.00'	45.99'	65°52'43"
C4	S 81°18'09" W	66.66'	40.00'	78.80'	112°52'05"
C5	S 56°25'11" W	35.69'	35.00'	37.45'	61°18'48"
C6	N 87°24'25" W	14.42'	75.00'	14.44'	11°01'59"
C7	S 70°54'06" E (S 70°31'15" E) (S 70°55'13" E)	28.59' 28.60' 28.60'	75.00'	28.77'	21°58'39"

- LEGEND**
- FOUND 5/8" IRON ROD UNLESS OTHERWISE NOTED
 - SET 5/8"x30" IRON ROD w/CAP STAMPED "HIBBS-LS 52989"
 - △ CALCULATED POSITION
 - () RECORD PER M31-73
 - [] RECORD PER M113-56
 - { } RECORD PER CS 55/69A
 - ◇ RECORD PER GARDEN HOMES, VOL. 6, PG. 13
 - (2) RECORD PER LAND PARTITION 2012-0005
 - (3) RECORD PER M99-23
 - (4) RECORD PER M123-40

BASE OF BEARING- OREGON COORDINATE REFERENCE SYSTEM (O.C.R.S.)
 COTTAGE GROVE TO CANYONVILLE ZONE

FIELD CREW: NEIL HIBBS, KADIN BAKER, SAGE BAKER
 EQUIPMENT: TRIMBLE R10 RECEIVER USING ORGN, NIKON NPL-322+2" TOTAL STATION
 OFFICE: NEIL HIBBS
 DRAFTING: NEIL HIBBS

ALSO DONE FOR:
 GREGORY WESTERMEYER
 1296 NW WHIPPLE AVE.
 ROSEBURG, OR. 97470

SURVEY		REGISTERED PROFESSIONAL LAND SURVEYOR OREGON JANUARY 12, 1999 F. NEIL HIBBS 52989 EXPIRATION DATE 6/30/2025
LYING IN THE NW 1/4 OF SEC. 14, T27S, R6W WILLAMETTE MERIDIAN, DOUGLAS COUNTY, OREGON		
CLIENT:	NEIL LAND SURVEYING, INC HIBBS 4739 LOOKINGGLASS RD. ROSEBURG, OR. 97471 phone: 541-957-9303 nelhibbslandsurv@gmail.com	
DWG SCALE: 1"= 40'	JOB NO.: 3117-01	DATE: JANUARY 2025
		PAGE 1 OF 1

MAP FILE M184-53