

MAP OF SURVEY

THE NORTHWEST QUARTER OF SECTION 35, TOWNSHIP 31 SOUTH, RANGE 7 WEST, WILLAMETTE MERIDIAN
DOUGLAS COUNTY, OREGON

SURVEY FOR: LONE ROCK TIMBERLAND LLC
P.O. BOX 1127 ROSEBURG, OREGON 97470
SURVEY BY: LONE ROCK TIMBER MANAGEMENT LLC
P.O. BOX 1127 ROSEBURG, OREGON 97470

DATE: DECEMBER 2024 TRACT: B.A. YOUNG 2

PAGE 1 OF 2

SEE PAGE 2 FOR CORNER INFORMATION

FILED
DATE: 12-4-2024 BY: DV
THIS SURVEY CONSISTS OF:
MAP: M184-40 A&B
NARRATIVE:
CORNER RPT:
DOUGLAS COUNTY SURVEYOR

**CARBON RIVER HOLDINGS LLC
PROPERTY**

BASIS OF BEARING
<N89°21'E 2648.58' <40.13 CHAINS>>
(N89°03'E 2641.98' (40.03 CHAINS))
N89°03'00"E 2643.93'

**LONE ROCK TIMBERLAND LLC
PROPERTY**

NARRATIVE:

THE PURPOSE OF THIS SURVEY IS TO ESTABLISH PROPERTY CORNERS AND MARK PROPERTY LINES FOR THE LONE ROCK TIMBERLAND, LLC. PROPERTY LOCATED IN THE NORTH HALF OF THE NORTHWEST QUARTER OF SECTION 35, TOWNSHIP 31 SOUTH RANGE 7 WEST W.M., FOR TIMBER MANAGEMENT PURPOSES. WE BEGAN THIS SURVEY BY SEARCHING FOR ALL KNOWN MONUMENTS AROUND THE NORTHWEST QUARTER OF SECTION 35 (CORNERS 1, 2, 4, AND 5). WE COULD FIND NO RECORD OF THE NORTHWEST QUARTER OF SECTION 35, EVER BEING OFFICIALLY SUBDIVIDED BY PRIVATE OR BLM SURVEYORS. WE SEARCHED IN THE AREA OF THE CENTER NORTH 1/16TH OF SECTION 35 AND NORTH 1/16TH OF SECTIONS 34 AND 35 (CORNERS 3 AND 6), AND FOUND EVIDENCE OF PREVIOUSLY MARKED PROPERTY LINES AND APPROXIMATE CORNER LOCATION TAGS, BUT DID NOT DISCOVER EVIDENCE OF CORNER MONUMENTS. THE EAST-WEST CENTERLINE OF THE NORTHWEST QUARTER, THE COMMON PROPERTY LINE BETWEEN LONE ROCK TIMBERLAND, LLC AND CARBON RIVER HOLDINGS LLC, APPEARS TO HAVE BEEN MARKED FOR TIMBER MANAGEMENT PURPOSES, AT AN UNDETERMINED DATE PRIOR TO THIS SURVEY, BUT NEITHER CONTROLLING CORNER WAS EVER ESTABLISHED.

WE BEGAN OUR SURVEY AT THE CORNER OF SECTIONS 26, 27, 34, AND 35, (CORNER 1), RAN A RANDOM CLOSED LOOP TRAVERSE THROUGH THE QUARTER CORNER OF SECTIONS 26 AND 35 (CORNER 2), SURVEY CONTROL POINTS NEAR THE CENTER NORTH 1/16TH OF SECTION 35 AND THE NORTH 1/16TH OF SECTIONS 34 AND 35, CLOSED OUR TRAVERSE BACK TO THE CORNER OF SECTIONS 26, 27, 34, AND 35 AND BALANCED THIS TRAVERSE. WE THEN RAN A RANDOM CLOSED LOOP TRAVERSE FROM ESTABLISHED AND BALANCED SURVEY CONTROL POINTS ON THE SOUTH LINE OF OUR INITIAL TRAVERSE THROUGH THE CENTER QUARTER CORNER OF SECTION 35 (CORNER 4), THEN BACK TO THE SAME SURVEY CONTROL POINTS ON OUR INITIAL TRAVERSE AND BALANCED THIS TRAVERSE. WE ALSO RAN A RANDOM CLOSED LOOP TRAVERSE FROM ESTABLISHED AND BALANCED SURVEY CONTROL POINTS ON THE SOUTH LINE OF OUR INITIAL TRAVERSE TO THE QUARTER CORNER OF SECTIONS 34 AND 35 (CORNER 5), THEN BACK TO THE SAME SURVEY CONTROL POINTS ON OUR INITIAL TRAVERSE AND BALANCED THIS TRAVERSE. WE THEN ROTATED OUR SURVEY BETWEEN THE CORNER OF SECTIONS 26, 27, 34, AND 35 (CORNER 1) AND THE QUARTER CORNER OF SECTIONS 26 AND 35 (CORNER 2) TO THE BLM'S 1963-1964 BASIS OF BEARING. WE THEN PROPERLY PROPORTIONED THE CENTER NORTH 1/16TH OF SECTION 35 (CORNER 3), THE NORTH 1/16TH OF SECTIONS 34 AND 35 (CORNER 6), AND SET OUR MONUMENTS USING OUR BALANCED TRAVERSES. THE RECOVERED EXISTING BLAZES TO THE WEST AND EAST OF OUR SET MONUMENTS WERE NOT USED AS EVIDENCE OF THESE CORNERS. HOWEVER, THESE BLAZES GENERALLY ALIGNED WELL WITH OUR MONUMENTS AND PROPERTY LINE MARKING, WITH ONLY A FEW EXCEPTIONS NEAR THE CENTER OF THE NORTHWEST QUARTER AND THE MIDDLE OF THE SECTION LINE BETWEEN CORNERS 1 AND 2.

PROPERTY LINES SHOWN HEREON AS MARKED WERE QUARTER BLAZED AND PAINTED WITH RED PAINT. WE PLACED RED PROPERTY LINE RIBBON, FLORESCENT BLUE RIBBON, 5/ 1/2' TALL STEEL GALVANIZED U-POSTS AND ALUMINUM PROPERTY LINE TAGS WERE PLACED AT INTERVALS ON TRUE LINE BETWEEN THE FOUND AND SET MONUMENTS AS SHOWN. BEARING TREES WERE SCRIBED AT ROOT CROWN WITH DISTANCES MEASURED TO AN ALUMINUM NAIL AT SIDE CENTER AND BEARINGS WERE COMPUTED BY TURNING HORIZONTAL ANGLES FROM TRAVERSE CONTROL POINTS TO AN ALUMINUM NAIL IN FACE CENTER. THIS SURVEY WAS CONDUCTED USING A TRIMBLE C5 TOTAL STATION. BRETT RAGON, BRODIE MINTER, ZACHARY HOLLAND, IGNACIO ROMAN, AND TREVOR CLEMO ASSISTED ME DURING THIS SURVEY.

**CARBON RIVER HOLDINGS LLC
PROPERTY**

**CARBON RIVER HOLDINGS LLC
PROPERTY**

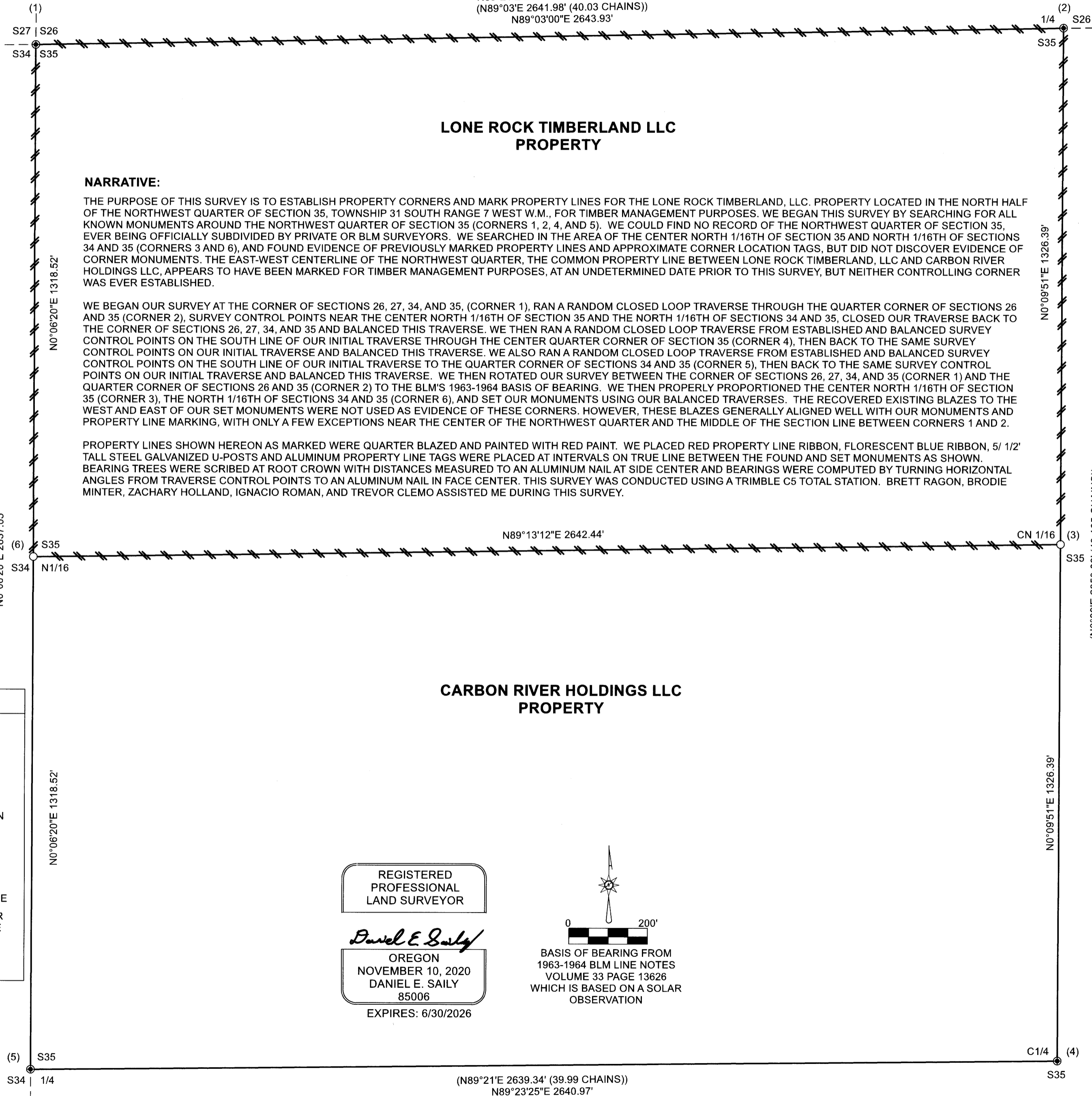
**BLM O&C
PROPERTY**

LEGEND

- FOUND 1964 BLM BRASS CAP AS PER RECORD, SEE CORNER NOTES ON PAGE 2 ATTACHED
- SET 5/8" X 40" IRON ROD WITH 2.5" ALUMINUM CAP MARKED AS NOTED, SEE CORNER NOTES ON PAGE 2 ATTACHED.
- < > RECORD AS PER 1882 GLO SUBDIVISION VOLUME 19 PAGES 8046-8047 FILED IN THE DOUGLAS COUNTY SURVEYOR'S OFFICE
- () RECORD AS PER 1963-1964 BLM DEPENDENT RESURVEY AND SUBDIVISION VOLUME 33 PAGES 13624-13626 AND 13644-13645 FILED IN THE DOUGLAS COUNTY SURVEYOR'S OFFICE
- ++ ++ RECORD CORNER INFORMATION AS PER 1985 JOHNSTONE RENEWAL CS 58/296-1 FILED IN THE DOUGLAS COUNTY SURVEYOR'S OFFICE
- { } RECORD CORNER INFORMATION AS PER 1986 JOHNSTONE CORNER RENEWAL CS 63/26-5 FILED IN THE DOUGLAS COUNTY SURVEYOR'S OFFICE
- // \ RECORD CORNER INFORMATION AS PER 1996 DOUGLAS COUNTY CORNER RENEWAL CS 65/9-7 FILED IN THE DOUGLAS COUNTY SURVEYOR'S OFFICE
- ==== LINES SURVEYED, BLAZED, PAINTED, RIBBONED, TAGGED AND POSTED
- _____ LINES SURVEYED BUT NOT MARKED

REGISTERED
PROFESSIONAL
LAND SURVEYOR
Daniel E. Saily
OREGON
NOVEMBER 10, 2020
DANIEL E. SAILY
85006
EXPIRES: 6/30/2026

0 200'
BASIS OF BEARING FROM
1963-1964 BLM LINE NOTES
VOLUME 33 PAGE 13626
WHICH IS BASED ON A SOLAR
OBSERVATION



MAP FILE M184-40A

MAP FILE M184-40A

MAP OF SURVEY

THE NORTHWEST QUARTER OF SECTION 35, TOWNSHIP 31 SOUTH, RANGE 7 WEST, WILLAMETTE MERIDIAN
DOUGLAS COUNTY, OREGON

SURVEY FOR: LONE ROCK TIMBERLAND LLC
P.O. BOX 1127 ROSEBURG, OREGON 97470
SURVEY BY: LONE ROCK TIMBER MANAGEMENT LLC
P.O. BOX 1127 ROSEBURG, OREGON 97470

DATE: DECEMBER 2024 TRACT: B.A. YOUNG 2

PAGE 2 OF 2

FILED
DATE: 12-4-2024 BY: [Signature]
THIS SURVEY CONSISTS OF:
MAP: 1184-40A&B
NARRATIVE:
CORNER RPT:
DOUGLAS COUNTY SURVEYOR

CORNER INFORMATION:

1) THE CORNER OF SECTIONS 26, 27, 34 AND 35, T31S R7W (PLSS 500200)
FOUND 1964 BLM BRASS CAP AND IRON PIPE MARKED T31S R7W S27, S26, S34, S35 AS PER DOUGLAS COUNTY RENEWAL CS 65/9-7 FILED IN THE DOUGLAS COUNTY SURVEYOR'S OFFICE.
-- FOUND 1" X 0.4' TALL PIPE ALONG NORTHEAST SIDE OF MONUMENT AS PER RECORD.
-- FOUND 10" DOUGLAS-FIR BEARS S7 1/4°W 65.6' // RECORD S 7 1/2°W 65.7" WITH A HEALED FACE AND DOUGLAS COUNTY SURVEYOR'S TAG.
-- FOUND 16"X5' TALL ROTTEN PINE STUMP BEARS S8 1/4°E 20.0' //RECORD S8 1/2°E 20.0" WITH A ROTTEN FACE AND DOUGLAS COUNTY SURVEYOR'S TAG.
-- FOUND 18"X1.3' TALL ROTTEN PINE STUMP BEARS N78 1/4°E 35.2' //RECORD N78°E 35.5" WITH A HEALED FACE AND NO TAG.
-- FOUND 13" TAN OAK BEARS S50 1/4°E 34.2' //RECORD S51°E 34.5" WITH A HEALED FACE AND BLM TAG.
-- FOUND 27" DOUGLAS-FIR BEARS N12 1/4°W 76.6' //RECORD N12°W 73.1" WITH A HEALED FACE. WE RE-TAG.
-- NEW 12" DOUGLAS-FIR BEARS N11 3/4°E 19.0'. WE SCRIBE T31S R7W S26 BT AND TAG.
CORNER MONUMENT LIES ON WEST FACING SLOPE APPROXIMATELY 60' WEST OF A GRAVEL SURFACE LOGGING ROAD. TOP OF MONUMENT IS 0.3' ABOVE GROUND LEVEL. WE PLACE A 5 1/2' TALL STEEL GALVANIZED U-POST 1.0' NORTH.

2) QUARTER CORNER OF SECTION 26 AND 35, T31S R7W, (PLSS 540200)
FOUND 1964 BLM BRASS CAP AND IRON PIPE MARKED T31S R7W 1/4 S26 S35 AS PER VOLUME 33 PAGE 13626 FILED IN THE DOUGLAS COUNTY SURVEYOR'S OFFICE.
-- FOUND 1" X 0.3' TALL PIPE LEANING TO THE SOUTH AND 0.8' SOUTH OF BLM BRASS CAP.
-- FOUND UNRECORDED 26" DOUGLAS-FIR BEARS S68 3/4°E 30.7' WITH A HEALED FACE AND BLM TAG.
-- FOUND 35" PONDEROSA PINE BEARS S29 1/2°E 60.2' (RECORD S29 1/4°E 60.72' (92 LINKS)) WITH A ROSEBURG LUMBER COMPANY TAG AND HEALED FACE.
-- FOUND 20" DOUGLAS-FIR AT (RECORD N66 1/4°W 44.88' (68 LINKS)) WITH A HEALED FACE AND BLM TAG.
-- FOUND 7" X 2' TALL ROTTEN PINE STUMP AT (RECORD N55 3/4°W 17.16' (26 LINKS)) NO TAG OR VISIBLE FACE.
-- FOUND ROTTEN DOUGLAS-FIR STOB AT (RECORD S17 3/4°W 26.4' (40 LINKS)) WITH A VISIBLE "BT" SCRIBE AND BLM TAG.
-- NEW 14" PONDEROSA PINE BEARS S19 1/2°W 23.1'. WE SCRIBE 1/4 S35 BT AND TAG.
-- NEW 23" DOUGLAS-FIR BEARS N21 1/4°W 23.1'. WE SCRIBE 1/4 S26 BT AND TAG.
CORNER MONUMENT LIES ON A GENTLE SOUTH FACING SLOPE IN MATURE TIMBER. TOP OF MONUMENT IS 0.2' ABOVE GROUND LEVEL. WE PLACE A 5 1/2' TALL STEEL GALVANIZED U-POST 1.0' WEST.

3) CENTER NORTH ONE SIXTEENTH CORNER OF SECTION 35, T31S R7W (PLSS 540160)
SET 5/8" X 40" IRON ROD WITH 2.5" ALUMINUM CAP MARKED LONE ROCK TIMBER CN 1/16 S35 2024 85006PLS.
-- NEW 17" DOUGLAS-FIR BEARS N37 3/4°E 16.3'. WE SCRIBE CN 1/16 S35 BT AND TAG.
-- NEW 16" PACIFIC YEW BEARS S63 1/2°W 17.9' WE SCRIBE CN 1/16 S35 BT AND TAG.
CORNER MONUMENT LIES ON FLAT CREEK BENCH IN MATURE TIMBER, APPROXIMATELY 75' EAST AND 160' SOUTH OF MIDDLE CREEK RUNNING SOUTHWEST AND 40' EAST OF THE CENTERLINE OF MIDDLE CREEK GRAVEL SURFACE ROAD. TOP OF MONUMENT IS 0.2' ABOVE GROUND LEVEL. WE PLACE A 5 1/2' TALL STEEL GALVANIZED U-POST 1.0' NORTH.

4) CENTER QUARTER CORNER OF SECTION 35, T31S R7W (PLSS 540140)
FOUND 1964 BLM BRASS CAP AND IRON PIPE MARKED T31S R7W C 1/4 S35 AS PER VOLUME 33 PAGE 13644-13645 FILED IN THE DOUGLAS COUNTY SURVEYOR'S OFFICE.
-- FOUND INDETERMINATE SIZE ROTTEN DOUGLAS-FIR STUMP BEARS N21 1/4°W 28.3' TO A SPIKE IN THE TOP CENTER {RECORD N21°W 28.3'}.
-- FOUND TIN COVERED FIR STUMP BEARS S53 1/2°W 22.8' (RECORD S53°W 16.5') WITH BLM TAG AND SPIKE.
-- NEW 12" DOUGLAS-FIR BEARS N28 1/2°W 28.5'. WE SCRIBE C1/4 S35 BT AND TAG.
-- NEW 9" DOUGLAS-FIR BEARS S43°W 17.2'. WE SCRIBE C1/4 S35 BT AND TAG.
-- NEW 8" DOUGLAS-FIR BEARS S52 3/4°E 23.1'. WE SCRIBE C1/4 S35 BT AND TAG.
-- NEW 8" DOUGLAS-FIR BEARS N33 3/4°E 24.9'. WE SCRIBE C1/4 S35 BT AND TAG.
-- FOUND STEEL POST ALONG NORTH SIDE OF MONUMENT.
CORNER MONUMENT LIES ON STEEP NORTHEAST FACING SLOPE IN EVEN AGED SECOND GROWTH TIMBER STAND. TOP OF MONUMENT IS AT GROUND LEVEL.

5) QUARTER CORNER OF SECTION 34 AND 35, T31S R7W (PLSS 500140)
FOUND 1964 BLM BRASS CAP AND IRON PIPE MARKED T31S R7W 1/4 S34 S35 AS PER VOLUME 33 PAGE 13624
-- FOUND 28" DOUGLAS-FIR BEARS S14 1/4°E 57.4' ++RECORD S14°E 58.1'++ WITH A HEALED FACE AND BLM TAG.
-- FOUND 11" X 6' TALL DOUGLAS-FIR STUMP BEARS S37°W 13.4' ++RECORD S41°W 13.8'++ WITH A HEALED FACE AND ROSEBURG LUMBER COMPANY TAG.
-- SET 5/8"X36" IRON ROD REFERENCE, 0.2' ABOVE GROUND, WITH ORANGE PLASTIC CAP MARKED LONE ROCK TIMBER 85006PLS BEARS N26°28'08"E 31.94'. WE PLACE A 5 1/2' STEEL GALVANIZED U-POST BESIDE AND WIRE TAG TO POST.
-- SET 5/8"X36" IRON ROD REFERENCE, 0.2' ABOVE GROUND, WITH ORANGE PLASTIC CAP MARKED LONE ROCK TIMBER 85006PLS BEARS N54°14'32"W 16.39'. WE PLACE A 5 1/2' STEEL GALVANIZED U-POST BESIDE AND WIRE TAG TO POST.
-- FOUND BENT STEEL POST ALONG NORTH SIDE OF MONUMENT
CORNER MONUMENT LIES ON EAST FACING SLOPE AT SOUTHEAST EDGE OF RECENT CLEAR-CUT, WITH MATURE TIMBER TO THE SOUTHEAST. TOP OF MONUMENT IS AT GROUND LEVEL WITH DOZER TRAIL FILL MATERIAL PERCHED ABOVE TO THE NORTH AND WEST. WE PLACE A 5 1/2' TALL STEEL GALVANIZED U-POST 0.2' NORTH.

6) NORTH ONE SIXTEENTH CORNER OF SECTION 34 AND 35, T31S R7W (PLSS 500160)
SET 5/8" X 40" IRON ROD WITH 2.5" ALUMINUM CAP MARKED LONE ROCK TIMBER N 1/16 S34 S35 2024 85006PLS.
-- NEW 11" CANYON LIVE OAK BEARS N88°E 45.9'. WE SCRIBE N 1/16 S35 BT AND TAG.
-- NEW 11" CANYON LIVE OAK BEARS N40 1/2°W 16.6'. WE SCRIBE N1/16 S34 BT AND TAG.
CORNER MONUMENT LIES ON A STEEP, ROCKY SOUTH FACING SLOPE APPROXIMATELY 150' NORTH OF MIDDLE CREEK. TOP OF MONUMENT IS 0.5' ABOVE GROUND LEVEL. WE PLACE A 5 1/2' TALL STEEL GALVANIZED U-POST 1.0' NORTH.

REGISTERED
PROFESSIONAL
LAND SURVEYOR

Daniel E. Saily

OREGON
NOVEMBER 10, 2020
DANIEL E. SAILY
85006

EXPIRES: 6/30/2026

MAP FILE 1184-40B

MAP FILE 1184-40B