

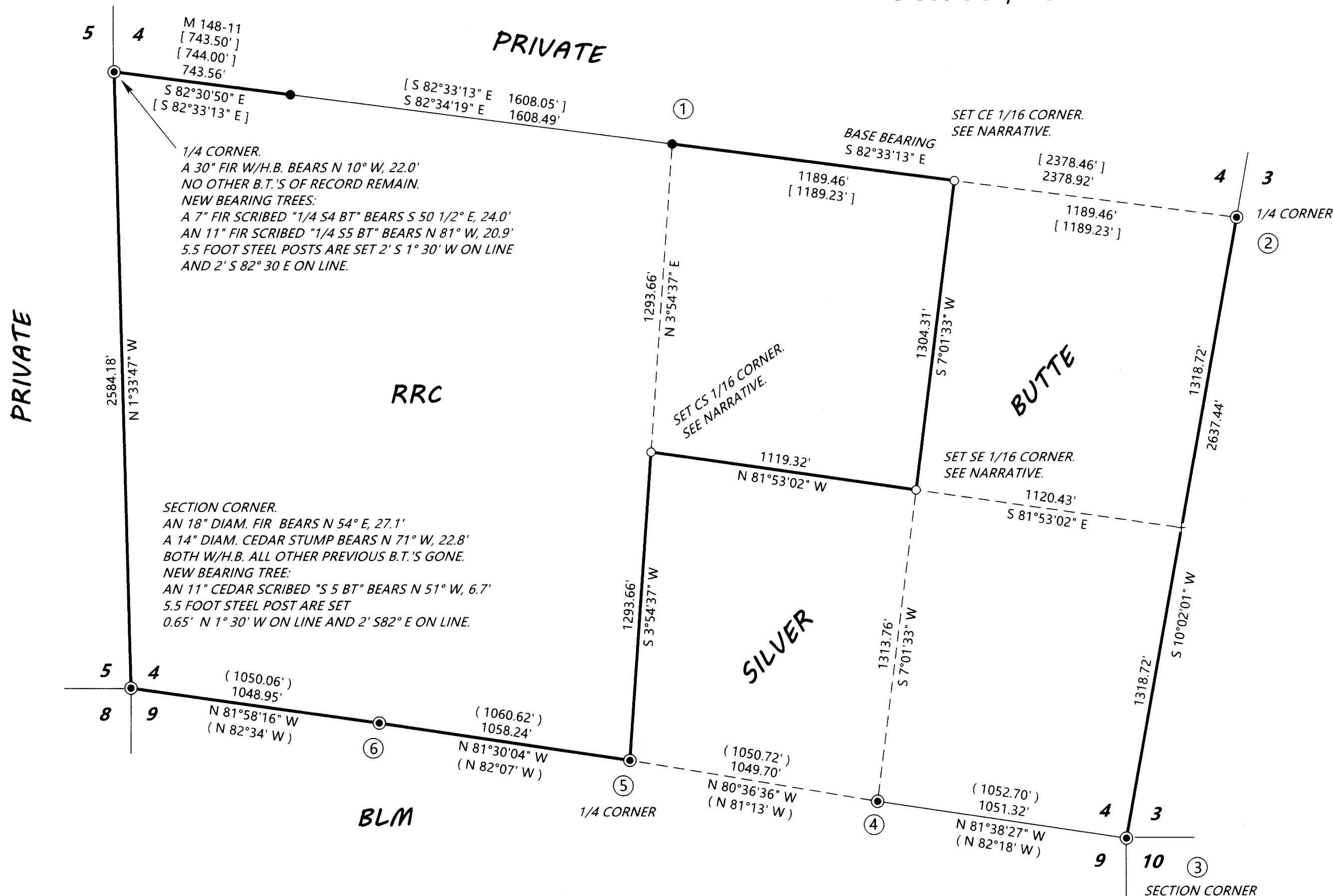
MAP OF SURVEY

LOCATED in the South 1/2 of Section 4, T. 29 S., R. 4 W., W.M.
in Douglas County, Oregon.

October, 2024

FILED
Date: 10-15-2024 By: [Signature]
This survey consists of:
Map: M184-31

MAP FILE M184-31



SURVEYED FOR: ROSEBURG RESOURCES CO.
P.O. BOX 1088
ROSEBURG, OREGON 97470

SURVEYED BY: DAVID EDWARDS LAND SURVEYING
P.O. BOX 361
OAKLAND, OREGON 97462
PHONE: (541) 459-0512



LEGEND

- INDICATES B.L.M. OR D.C.S.O. BRASS CAP FOUND.
 - INDICATES 5/8" DIAM. IRON ROD WITH CAP FOUND PER M 118-13 UNLESS OTHERWISE NOTED.
 - + INDICATES A COMPUTED POINT.
 - INDICATES 5/8" X 30" STEEL REBAR W/ALUM. CAP MKD. AS PER THE 2009 B.L.M. MANUAL AND ALSO MKD. "L.S. 2339" & "ROSEBURG RESOURCES CO." & "2023" SET.
 - [] DENOTES RECORD DATA PER M 118-13 OR M 125-24 UNLESS OTHERWISE NOTED.
 - () INDICATES RECORD DATA PER 1978 B.L.M. RESURVEY.
 - H.B. = HEALED BLAZE.
 - INDICATES LINE POSTED AND BLAZED THIS SURVEY.
- SCALE: 1" = 400'
BASIS OF BEARINGS: M 118-13 AS SHOWN.

NARRATIVE

THE PURPOSE OF THIS SURVEY IS TO LOCATE THOSE BOUNDARIES SHOWN AS BOLD LINES HEREON AND TO SET THE THREE ONE-SIXTEENTH CORNERS AS SHOWN. CONTROLLING MONUMENTS WERE TIED IN AND THE SUBDIVISION OF THE SOUTHEAST QUARTER COMPUTED. RANDOM TRAVERSES WERE RUN NEAR THE DESIRED BOUNDARIES AND OFFSETS WERE MADE TO THE TRUE LINE. THE BOUNDARIES WERE MARKED BY BLAZING TREES ON EACH SIDE OF THE LINE, BY SETTING 5.5 FOOT STEEL POSTS ALONG THE BOUNDARIES AT INTERVALS OF 200 FEET OR LESS AND BY HANGING LIBERAL AMOUNTS OF RED FLAGGING ALONG THE TRUE LINE.

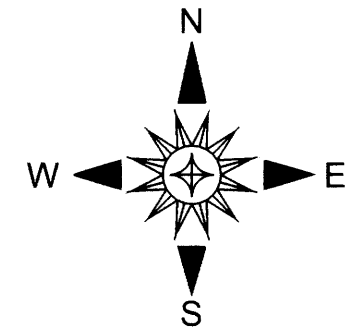
AT THE SET CE 1/16 CORNER: A 13" DIAM. FIR BEARS S 61° E, 16.8'
BOTH SCRIBED "CE 1/16 S4 BT".
A 10 DIAM. CEDAR BEARS S 60° W, 27.7'
A 5.5" STEEL POST IS SET 2 FEET S 7° W ON LINE.

AT THE SET SE 1/16 CORNER: A 16" DIAM. FIR BEARS S 20° W, 31.2'
A 9" DIAM. FIR BEARS N 31° W, 12.5'
BOTH SCRIBED "SE 1/16 S4 BT".
A 5.5" STEEL POST IS SET 2 FEET N 7° E ON LINE.

AT THE SET CS 1/16 CORNER: AN 8" DIAM. FIR BEARS N 82° E, 11.9'
A 9" DIAM. FIR BEARS N 41° W, 2.7'
BOTH SCRIBED "CS 1/16 S4 BT".
A 5.5" STEEL POST IS SET 2' S 4° W ON LINE.

FIELD CREW: BRANT MILLER AND ERIC SPRINKLE.
EQUIPMENT: NIKON TOTAL STATION.
COMPUTATIONS AND DRAFTING: DAVID EDWARDS.

- | CORNER | NOTES |
|-----------------------------------------------------------------------------------------------------------------------------------------------------------------------------------------------------------------------------------------|---------------------------------------------------------------------------------------------------------------------------------------------------------------------------------------------------------------------------------------------------------------------------------------------------------------------------|
| ① CENTER 1/4 CORNER
A 14" FIR BEARS N 6° E, 37.5'
A 10" FIR BEARS S 20° E, 7.0'
A 14" FIR BEARS S 51° W, 7.8'
A 13" FIR BEARS N 46 1/2° W, 49.7'
ALL WITH A HEALED BLAZE.
A 5.5" STEEL POST IS SET 2' S82° E ON LINE. | ③ SE SECTION CORNER
A 36" FIR BEARS N 38 1/2° E, 19.8'
A 14" DEAD MADRONE BEARS S 73 3/4° W, 23.4'
A 25" FIR BEARS N 11° W, 57.8'
THE FIRS HAVE HEALED BLAZE.
5.5" STEEL POST ARE SET 2' N 10° E ON LINE AND 2' N 82° W. |
| ② EAST 1/4 CORNER
A 17" YEW BEARS N 55° W, 6.6'
A 34" FIR BEARS N 21° W, 23.5'
FIR WITH A HEALED BLAZE.
NEW B.T.: A 5" DIAM. FIR SCRIBED "1/4 S3 BT" BEARS S 9° E, 5.3'
A 5.5" STEEL POST IS SET 2 FEET S 10° W ON LINE. | ④ EAST 1/16 CORNER
A 62" CEDAR BEARS N 52 1/4° E, 26.4'
A 64" CEDAR STUMP BEARS S 47° W, 31.0'
A 19" MAPLE BEARS N 54 1/2° W, 15.8'
CEDAR AND MAPLE HAVE HEALED BLAZE.
A NEW B.L.M. BT W/2024 TAG: A 12" FIR BEARS S 56 3/4° E, 11.9' WITH VISIBLE SCRIBING.
ALUMINUM POSTS 5' SE ON LINE AND 5' SOUTH. |
| | ⑤ SOUTH 1/4 CORNER
A 12" FIR BEARS N 10° E, 24.2'
A 24" FIR BEARS S 60° E, 12.0'
BOTH WITH HEALED BLAZE.
2 LAUREL STUMPS EXIST AS PER M 118-13.
A 5.5" STEEL POST IS SET 2' N 4° E ON LINE. |
| | ⑥ WEST 1/16 CORNER
A 13" FIR BEARS S 9° E, 9.2'
A 19" FIR BEARS N 31 1/2° W, 7.3'
BOTH WITH HEALED BLAZE.
A 35" METAL CAPPED FIR STUMP BEARS S 24° W, 23.1'
A 5.5" STEEL POST IS SET 2' S 82° E ON LINE. |



MAP FILE M184-31