

**PROPERTY SURVEY LOCATED IN THE NE 1/4 AND SE 1/4 OF SECTION 24,
TOWNSHIP 20 SOUTH, RANGE 10 WEST, W.M., DOUGLAS COUNTY, OREGON.**

FILED
DATE: 9/4/2024 BY: SC
THIS SURVEY CONSISTS OF:
MAP: 4184-18 2/3
NARRATIVE:
CORNER RPT.:
DOUGLAS COUNTY SURVEYOR

NOTE 1 PLSS 700400

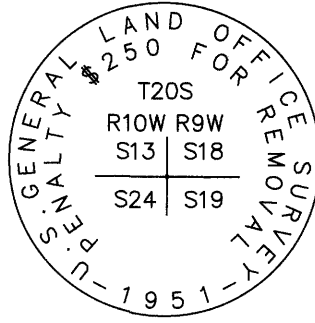
SECTION CORNER COMMON TO SECTIONS 13, 18, 19 AND 24

FOUND MONUMENT:
A 2-1/2" BRASS CAP ON A 2" IRON PIPE AS SET PER DCSO RECORDS VOL. 27, PAGE 11676 AND MARKED AS SHOWN. SET STEEL POST ALONGSIDE MONUMENT.

FOUND BT'S:
A 60" ROTTEN FIR STUMP, WITH NO MARKS BEARS S31°E 22.4' (S31°15'E PER DCSO RECORDS VOL. 27, PAGE 11676).
A 54" ROTTEN FIR STUMP, WITH NO MARKS BEARS S09°E 13.2' (PER DCSO RECORDS VOL. 27, PAGE 11676).
A 48" ROTTEN FIR STUMP, WITH NO MARKS BEARS N75°W 22.4' (PER DCSO RECORDS VOL. 27, PAGE 11676).

NEW BT'S:
A 19" ALDER, BARK SCRIBED "SE S13 BT" WITH X-CHOP AND TAG BEARS N13°W 1.4' TO A SPIKE AT SIDE CENTER.
A 40" CEDAR, FACED & SCRIBED "NW S19 BT" WITH X-CHOP AND TAG BEARS S35°E 22.4' TO A SPIKE AT SIDE CENTER.
A 14" CEDAR, FACED & SCRIBED "NE S24 BT" WITH X-CHOP AND TAG BEARS S05°W 21.7' TO A SPIKE AT SIDE CENTER.
A 13" FIR, FACED & SCRIBED "SE S13 BT" WITH X-CHOP AND TAG BEARS N78°W 17.5' TO A SPIKE AT SIDE CENTER.

LAT. AND LONG. PER GARMIN ETREX HAND HELD GPS:
N:43°49'41.1" W:123°49'36.4".



NOTE 5 PLSS 640340

CENTER 1/4 CORNER OF SECTION 24

SET MONUMENT:
SET 5/8" IRON REBAR WITH A RED CAP MARKED "86454 PLS".
SET STEEL POST ALONGSIDE CORNER.

NEW BT'S:
A 21" HEMLOCK, FACED & SCRIBED "C 1/4 S24 BT" WITH X-CHOP AND TAG BEARS S67°E 7.6' TO A SPIKE AT SIDE CENTER.
A 15" ALDER, BARK SCRIBED "C 1/4 S24 BT" WITH X-CHOP AND TAG BEARS S27°E 24.3' TO A SPIKE AT SIDE CENTER.
A 13" ALDER, BARK SCRIBED "C 1/4 S24 BT" WITH X-CHOP AND TAG BEARS S16°W 19.2' TO A SPIKE AT SIDE CENTER.
AN 11" CEDAR, FACED & SCRIBED "C 1/4 S24 BT" WITH X-CHOP AND TAG BEARS N65°W 35.2' TO A SPIKE AT SIDE CENTER.

LAT. AND LONG. PER GARMIN ETREX HAND HELD GPS:
N:43°49'04.3" W:123°50'18.1".

NOTE 6 PLSS 660340

CENTER-EAST 1/16 CORNER OF SECTION 24

SET MONUMENT:
SET 5/8" IRON REBAR WITH A RED CAP MARKED "86454 PLS".
SET STEEL POST ALONGSIDE CORNER.

NEW BT'S:
A 19" FIR, FACED & SCRIBED "CE 1/16 S24 BT" WITH X-CHOP AND TAG BEARS N80°E 22.4' TO A SPIKE AT SIDE CENTER.
A 23" DOUG FIR, FACED & SCRIBED "CE 1/16 S24 BT" WITH X-CHOP AND TAG BEARS N46°W 12.5' TO A SPIKE AT SIDE CENTER.

LAT. AND LONG. PER GARMIN ETREX HAND HELD GPS:
N:43°49'06.5" W:123°49'59.7".

NOTE 2 PLSS 700340

1/4 CORNER COMMON TO SECTIONS 19 AND 24

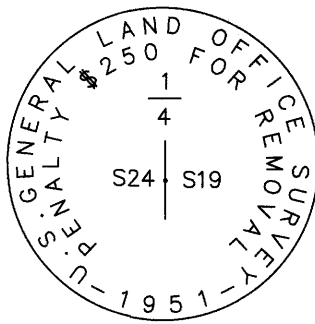
FOUND MONUMENT:
A 2-1/2" BRASS CAP ON A 1" IRON PIPE AS SET PER DCSO RECORDS VOL. 27, PAGE 11675 AND MARKED AS SHOWN.

FOUND BT'S:
A 36" CEDAR STUMP, WITH OPEN FACE BEARS S15°E 41.5' (S14°45'E PER DCSO RECORDS VOL. 27, PAGE 11675). ADDED A NEW TAG.
A 50" CEDAR STUMP, WITH OPEN FACE BEARS S60°30'W 26.4' (PER DCSO RECORDS VOL. 27, PAGE 11675). ADDED A NEW TAG.

NEW BO'S:
A STEEL POST BEARS SOUTH 1.5'.
A STEEL POST BEARS WEST 1.5'.

NEW BT'S:
A 21" ALDER, BARK SCRIBED "W 1/4 S19 BT" WITH X-CHOP AND TAG BEARS S54°E 47.3' TO A SPIKE AT SIDE CENTER.
A 21" ALDER, BARK SCRIBED "E 1/4 S24 BT" WITH X-CHOP AND TAG BEARS S83°W 19.6' TO A SPIKE AT SIDE CENTER.
A 19" CEDAR, FACED & SCRIBED "E 1/4 S24 BT" WITH X-CHOP AND TAG BEARS N42°W 31.4' TO A SPIKE AT SIDE CENTER.

LAT. AND LONG. PER GARMIN ETREX HAND HELD GPS:
N:43°49'10.2" W:123°49'42.0".



NOTE 7 PLSS 660400

E 1/16 CORNER COMMON TO SECTIONS 13 AND 24

SET MONUMENT:
SET 5/8" IRON REBAR WITH A RED CAP MARKED "86454 PLS". CORNER IS SET IN LANDING EAST OF "EAST FORK SPENCER CREEK RD".

NEW BT'S:
A 19" DOUG FIR, FACED & SCRIBED "E 1/16 S24 BT" WITH X-CHOP AND TAG BEARS S58°E 77.1' TO A SPIKE AT SIDE CENTER.
A 26" DOUG FIR, FACED & SCRIBED "E 1/16 S13 BT" WITH X-CHOP AND TAG BEARS S80°W 80.2' TO A SPIKE AT SIDE CENTER.

NEW BO:
A STEEL POST, WITH TAG BEARS N71°E S2.5.

LAT. AND LONG. PER GARMIN ETREX HAND HELD GPS:
N:43°49'36.6" W:123°49'54.5".

NOTE 3 PLSS 700300

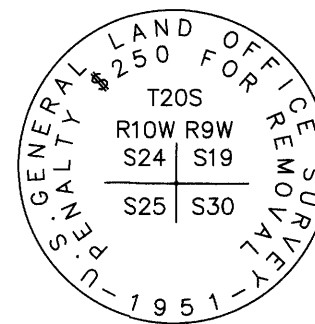
SECTION CORNER COMMON TO SECTIONS 19, 24, 25 AND 30

FOUND MONUMENT:
A 2-1/2" BRASS CAP ON A 2" IRON PIPE AS SET PER DCSO RECORDS VOL. 27, PAGE 11674-11675 AND MARKED AS SHOWN. A 1/2" IRON PIPE 3" TALL SITS ALONGSIDE MONUMENT. SET STEEL POST ALONGSIDE MONUMENT.

RECORD BT'S:
NO RECORD BT'S FOUND FOR THIS CORNER.

NEW BT'S:
A 17" MAPLE, BARK SCRIBED "SW S19 BT" WITH X-CHOP AND TAG BEARS N25°E 21.7' TO A SPIKE AT SIDE CENTER.
A 21" MAPLE, BARK SCRIBED "SW S19 BT" WITH X-CHOP AND TAG BEARS N52°E 31.9' TO A SPIKE AT SIDE CENTER.
A 27" MAPLE, FACED & SCRIBED "NE S25 BT" WITH X-CHOP AND TAG BEARS S06°W 20.7' TO A SPIKE AT SIDE CENTER.
A 12" FIR, FACED & SCRIBED "SE S24 BT" WITH X-CHOP AND TAG BEARS N81°W 12.8' TO A SPIKE AT SIDE CENTER.

LAT. AND LONG. PER GARMIN ETREX HAND HELD GPS:
N:43°48'37.0" W:123°49'47.7".



NOTE 8 PLSS 600400

SECTION CORNER COMMON TO SECTIONS 13, 14, 23 AND 24

FOUND BT'S:
A 60" FIR STUMP, BEARS N79°W 105.60' (N78°W PER DCSO RECORDS VOL. 27, PAGE 11692).
A 40" CEDAR, BEARS N69°E 5.30' (N70°E PER DCSO RECORDS VOL. 27, PAGE 11692).

NOTE 9 PLSS 600300

SECTION CORNER COMMON TO SECTIONS 23, 24, 25 AND 26

FOUND BT'S:
A 40" FIR STUMP, BEARS N55°W 22.40' (N57°15'W PER DCSO RECORDS VOL. 27, PAGE 11689-11690).
A 50" FIR STUMP, BEARS S15°E 64.00' (S13°E PER DCSO RECORDS VOL. 27, PAGE 11689-11690).

GENERAL NOTE:
LAT. AND LONG. ARE FROM A GARMIN ETREX HAND HELD GPS AND DOES NOT PRODUCE SURVEY GRADE COORDINATES.

NOTE 4 PLSS 640300

1/4 CORNER COMMON TO SECTIONS 24 AND 25

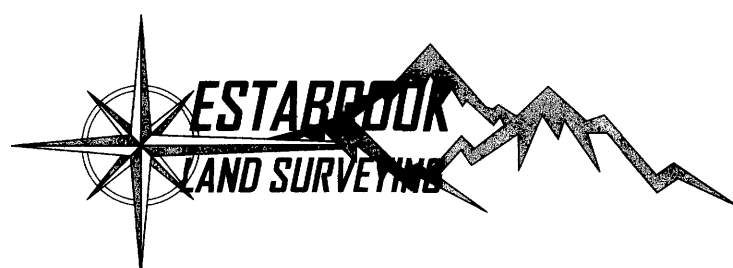
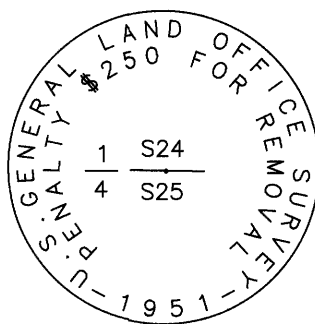
FOUND MONUMENT:
A 2-1/2" BRASS CAP ON A 1" IRON PIPE AS SET PER DCSO RECORDS VOL. 27, PAGE 11690 AND MARKED AS SHOWN.

FOUND BT'S:
A 28" HEMLOCK STUMP, WITH HEALED FACE BEARS S55°E 28.0' (PER DCSO RECORDS VOL. 27, PAGE 11690).
A 64" FIR SNAG, WITH HEALED FACE AND TAG BEARS N73°W 42.2' (PER DCSO RECORDS VOL. 27, PAGE 11690).

NEW BO'S:
A STEEL POST BEARS NORTH 2.0'.
A STEEL POST BEARS EAST 2.0'.

NEW BT'S:
A 13" ALDER, BARK SCRIBED "N 1/4 S25 BT" WITH X-CHOP AND TAG BEARS S40°W 15.2' TO A SPIKE AT SIDE CENTER.
A 20" ALDER, BARK SCRIBED "S 1/4 S24 BT" WITH X-CHOP AND TAG BEARS N70°W 9.0' TO A SPIKE AT SIDE CENTER.

LAT. AND LONG. PER GARMIN ETREX HAND HELD GPS:
N:43°48'36.4" W:123°50'22.1".



PO BOX 778
COOS BAY, OR 97420
541-294-6915
WWW.ESTABROOKLANDSURVEYING.COM

PREPARED FOR:
ROSEBURG RESOURCES CO.
23129 VAUGHN. RD.
VENETA, OREGON 97487

DRAWN BY: BAC
CHECKED BY: SRS
JOB NO.: 2023-098
DATE: 3/19/2024
SHEET: 2 OF 2

REGISTERED
PROFESSIONAL
LAND SURVEYOR
Stephan R. Stys
OREGON
NOVEMBER 6, 2022
STEPHAN R. STYS
86454PLS
EXPIRES 06/30/246