

PROPERTY SURVEY LOCATED IN THE NE 1/4 AND SE 1/4 OF SECTION 24, TOWNSHIP 20 SOUTH, RANGE 10 WEST, W.M., DOUGLAS COUNTY, OREGON.

FILED
DATE: 9-4-2024 BY: JC
THIS SURVEY CONSISTS OF:
MAP: M184-18 A/B
NARRATIVE:
CORNER RPT.:
DOUGLAS COUNTY SURVEYOR

NARRATIVE
THE PURPOSE OF THIS SURVEY WAS TO SET MONUMENTS AND MARK BOUNDARY LINES FOR RESOURCE MANAGEMENT.

THE PROCEDURE WAS TO LOCATE AND TIE RECORD MONUMENTS PER BLM MAP NO. 1398. WE DILIGENTLY SEARCHED FOR THE 1/4 CORNER COMMON TO SECTIONS 23 AND 24, BUT IT APPEARED THAT IT WAS LOST DUE TO A LANDSLIDE. WE WERE ALSO UNSUCCESSFUL IN LOCATING ANY ACCESSORIES TO SAID CORNER. WE THEN SEARCHED FOR THE SECTION CORNERS TO THE NORTH AND SOUTH AND WERE ALSO UNSUCCESSFUL IN LOCATING THE MONUMENT, BUT WE DID LOCATE BEARING TREES AND WERE ABLE TO CALCULATE A POSITION FOR SAID SECTION CORNERS. DUE TO THE POSITIONING OF THE BEARING TREES, I DETERMINED THAT THE MOST ACCURATE WAY TO CALCULATE THE POSITION OF SAID CORNERS WAS BY USING A TRANSIT RULE ADJUSTMENT ON A LINE FORMED BETWEEN THE TWO BEARING TREES AND THE CORNER. I THEN CALCULATED THE LOCATION OF THE CENTER 1/4 CORNER TO BE AT AN INTERSECTION OF THE LINE FORMED BETWEEN THE 1/4 CORNER COMMON TO SECTIONS 23 AND 24 AND THE 1/4 CORNER COMMON TO SECTIONS 19 AND 24 AND THE LINE FORMED BETWEEN THE 1/4 CORNER COMMON TO SECTIONS 13 AND 24 AND THE 1/4 CORNER COMMON TO SECTIONS 24 AND 25; THE LOCATION OF THE C-E 1/16 CORNER TO BE AT A MID POINT BETWEEN THE CENTER 1/4 OF SECTION 24 AND THE 1/4 CORNER COMMON TO SECTIONS 19 AND 24; AND THE LOCATION OF THE EAST 1/16 CORNER COMMON TO SECTIONS 13 AND 24 TO BE AT A MID POINT BETWEEN THE 1/4 CORNER COMMON TO SECTIONS 13 AND 24 AND THE SECTION CORNER COMMON TO SECTIONS 13, 18, 19 AND 24. WE THEN MARKED THE BOUNDARY WITH RED FLAGGING, RED TREE BLAZES AND STEEL POSTS.

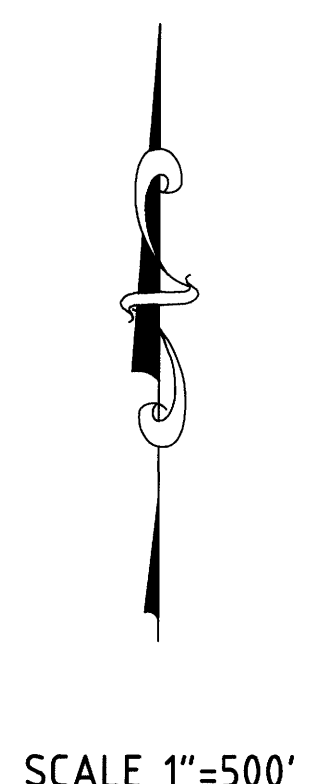
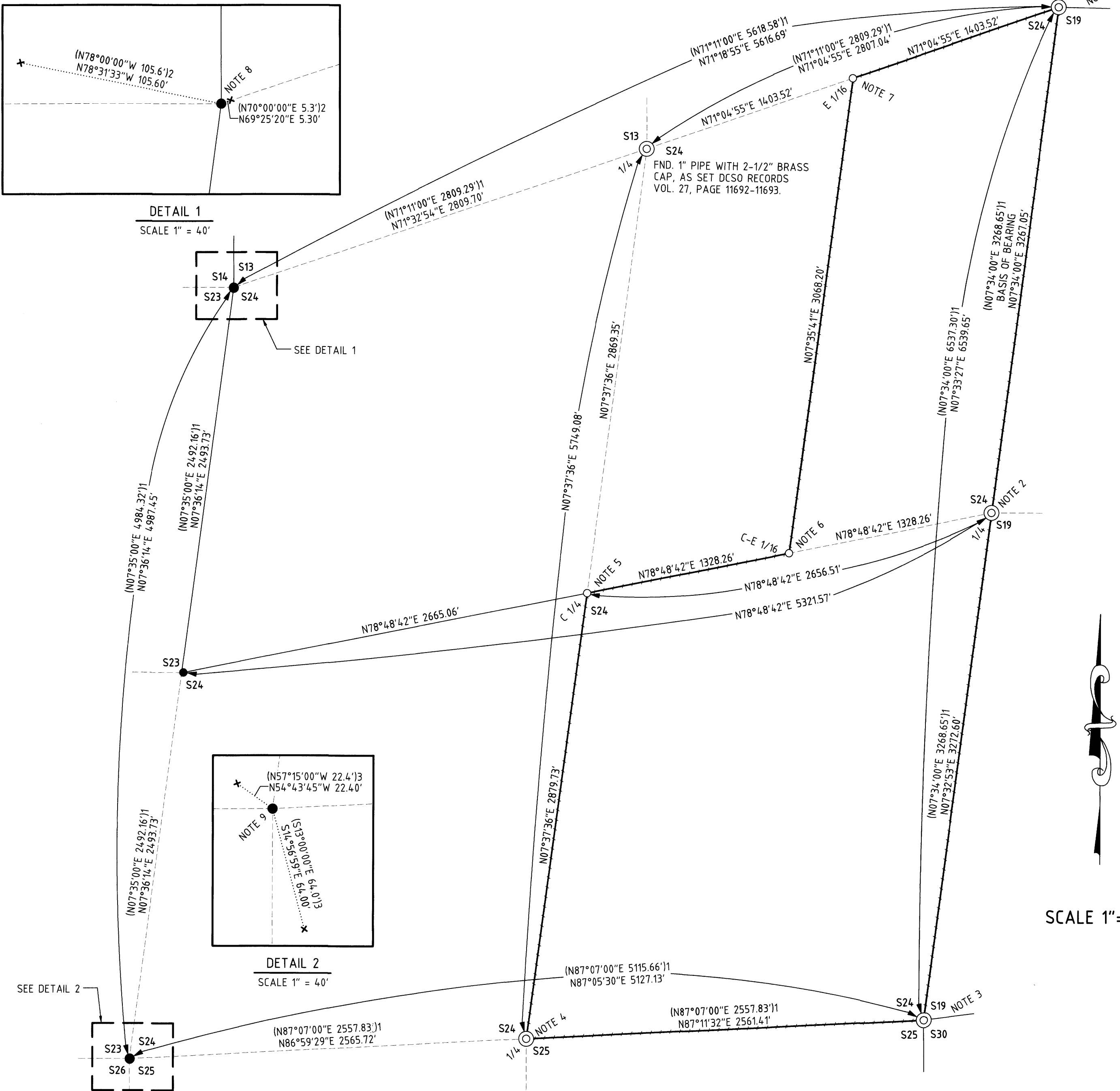
EQUIPMENT USED WAS A NIKON DTM 522 K2 TOTAL STATION WITH TDS RANGER DATA COLLECTOR.

ASSISTING PERSONNEL WERE BLUE JAMES, JACK JARRETT AND XANDER THALHEIMER.

BASIS OF BEARING
THE BASIS OF BEARING IS ASSUMED PER BLM MAP NO. 1398.

RECORD REFERENCE INFORMATION
BLM MAP NO. 1398 BY: THOMAS A. TILLMAN, DATED: MAY 1951 TO OCT. 1952.
DCSO RECORDS VOL. 27, PAGE 11692, BY: THOMAS A. TILLMAN, DATED: MAY 1951 TO OCT. 1952.
DCSO RECORDS VOL. 27, PAGE 11690, BY: THOMAS A. TILLMAN, DATED: MAY 1951 TO OCT. 1952.

- LEGEND**
- FOUND MONUMENT AS NOTED
 - SET 5/8" X 30" IRON ROD WITH PLASTIC CAP MARKED "STYS 86454PLS"
 - POINT CALCULATED
 - x BEARING TREE
 - BOUNDARY LINE MARKED WITH RED FLAGGING, RED TREE BLAZES AND STEEL POSTS
 - - - APPROXIMATE BOUNDARY OF UNSURVEYED PROPERTIES
 - - - APPROXIMATE SECTION, 1/4 AND/OR 16TH SECTION LINE
 - (1) RECORD PER BLM MAP NO. 1398
 - (2) RECORD PER DCSO RECORDS VOL. 27, PAGE 11692
 - (3) RECORD PER DCSO RECORDS VOL. 27, PAGE 11690



ESTABROOK LAND SURVEYING
PO BOX 778
COOS BAY, OR 97420
541-294-6915
WWW.ESTABROOKLANDSURVEYING.COM

PREPARED FOR:
ROSEBURG RESOURCES CO.
23129 VAUGHN RD.
VENETA, OREGON 97487

DRAWN BY: BAC
CHECKED BY: SRS
JOB NO.: 2023-098
DATE: 3/19/2024
SHEET: 1 OF 2

REGISTERED PROFESSIONAL LAND SURVEYOR
Stephan R. Stys
OREGON NOVEMBER 8, 2022
STEPHAN R. STYS
86454PLS
EXPIRES 06/30/2026