

PROPERTY SURVEY LOCATED IN THE NE 1/4 AND SE 1/4 OF SECTION 24, TOWNSHIP 20 SOUTH, RANGE 10 WEST, W.M., DOUGLAS COUNTY, OREGON.

FILED
DATE: 9-4-2024 BY: JC
THIS SURVEY CONSISTS OF:
MAP: M184-18 A/B
NARRATIVE:
CORNER RPT.:
DOUGLAS COUNTY SURVEYOR

NARRATIVE
THE PURPOSE OF THIS SURVEY WAS TO SET MONUMENTS AND MARK BOUNDARY LINES FOR RESOURCE MANAGEMENT.

THE PROCEDURE WAS TO LOCATE AND TIE RECORD MONUMENTS PER BLM MAP NO. 1398. WE DILIGENTLY SEARCHED FOR THE 1/4 CORNER COMMON TO SECTIONS 23 AND 24, BUT IT APPEARED THAT IT WAS LOST DUE TO A LANDSLIDE. WE WERE ALSO UNSUCCESSFUL IN LOCATING ANY ACCESSORIES TO SAID CORNER. WE THEN SEARCHED FOR THE SECTION CORNERS TO THE NORTH AND SOUTH AND WERE ALSO UNSUCCESSFUL IN LOCATING THE MONUMENT, BUT WE DID LOCATE BEARING TREES AND WERE ABLE TO CALCULATE A POSITION FOR SAID SECTION CORNERS. DUE TO THE POSITIONING OF THE BEARING TREES, I DETERMINED THAT THE MOST ACCURATE WAY TO CALCULATE THE POSITION OF SAID CORNERS WAS BY USING A TRANSIT RULE ADJUSTMENT ON A LINE FORMED BETWEEN THE TWO BEARING TREES AND THE CORNER. I THEN CALCULATED THE LOCATION OF THE CENTER 1/4 CORNER TO BE AT AN INTERSECTION OF THE LINE FORMED BETWEEN THE 1/4 CORNER COMMON TO SECTIONS 23 AND 24 AND THE 1/4 CORNER COMMON TO SECTIONS 19 AND 24 AND THE LINE FORMED BETWEEN THE 1/4 CORNER COMMON TO SECTIONS 13 AND 24 AND THE 1/4 CORNER COMMON TO SECTIONS 24 AND 25; THE LOCATION OF THE C-E 1/16 CORNER TO BE AT A MID POINT BETWEEN THE CENTER 1/4 OF SECTION 24 AND THE 1/4 CORNER COMMON TO SECTIONS 19 AND 24; AND THE LOCATION OF THE EAST 1/16 CORNER COMMON TO SECTIONS 13 AND 24 TO BE AT A MID POINT BETWEEN THE 1/4 CORNER COMMON TO SECTIONS 13 AND 24 AND THE SECTION CORNER COMMON TO SECTIONS 13, 18, 19 AND 24. WE THEN MARKED THE BOUNDARY WITH RED FLAGGING, RED TREE BLAZES AND STEEL POSTS.

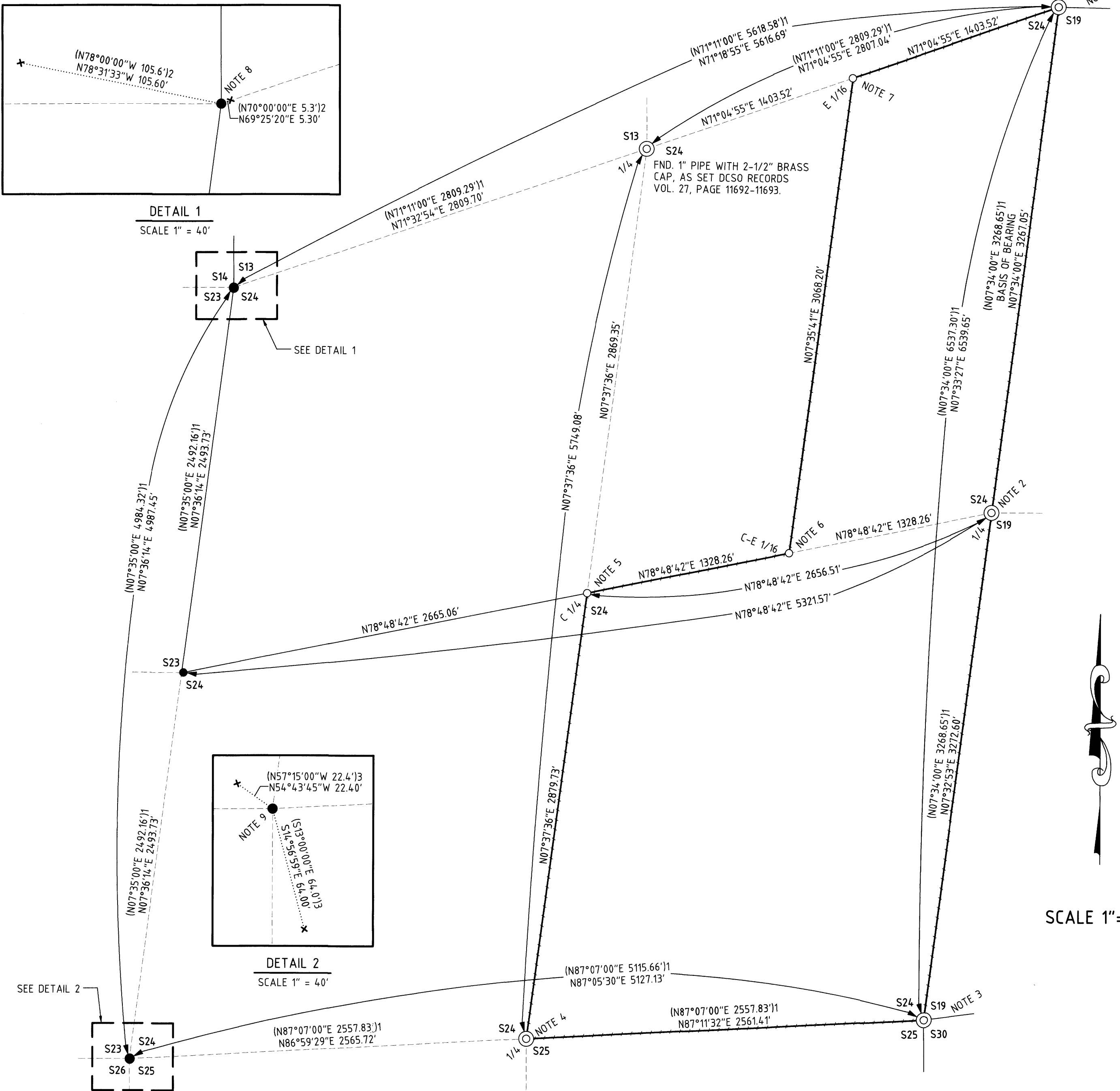
EQUIPMENT USED WAS A NIKON DTM 522 K2 TOTAL STATION WITH TDS RANGER DATA COLLECTOR.

ASSISTING PERSONNEL WERE BLUE JAMES, JACK JARRETT AND XANDER THALHEIMER.

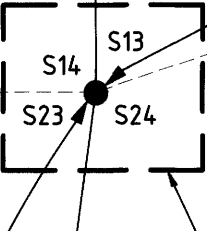
BASIS OF BEARING
THE BASIS OF BEARING IS ASSUMED PER BLM MAP NO. 1398.

RECORD REFERENCE INFORMATION
BLM MAP NO. 1398 BY: THOMAS A. TILLMAN, DATED: MAY 1951 TO OCT. 1952.
DCSO RECORDS VOL. 27, PAGE 11692, BY: THOMAS A. TILLMAN, DATED: MAY 1951 TO OCT. 1952.
DCSO RECORDS VOL. 27, PAGE 11690, BY: THOMAS A. TILLMAN, DATED: MAY 1951 TO OCT. 1952.

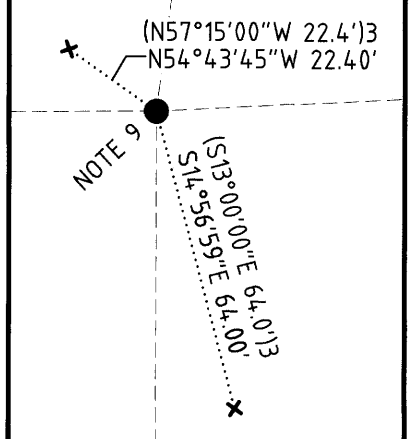
- LEGEND**
- FOUND MONUMENT AS NOTED
 - SET 5/8" X 30" IRON ROD WITH PLASTIC CAP MARKED "STYS 86454PLS"
 - POINT CALCULATED
 - x BEARING TREE
 - BOUNDARY LINE MARKED WITH RED FLAGGING, RED TREE BLAZES AND STEEL POSTS
 - - - APPROXIMATE BOUNDARY OF UNSURVEYED PROPERTIES
 - - - APPROXIMATE SECTION, 1/4 AND/OR 16TH SECTION LINE
 - (1) RECORD PER BLM MAP NO. 1398
 - (2) RECORD PER DCSO RECORDS VOL. 27, PAGE 11692
 - (3) RECORD PER DCSO RECORDS VOL. 27, PAGE 11690



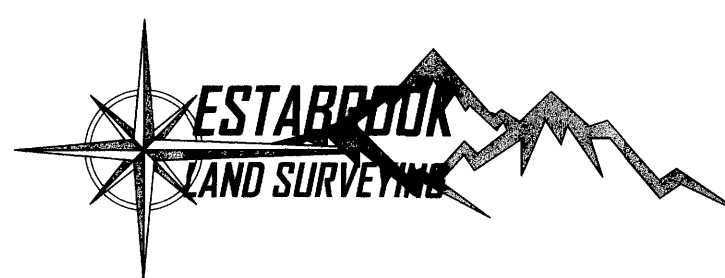
DETAIL 1
SCALE 1" = 40'



DETAIL 2
SCALE 1" = 40'



SCALE 1"=500'



PO BOX 778
COOS BAY, OR 97420
541-294-6915
WWW.ESTABROOKLANDSURVEYING.COM

PREPARED FOR:
ROSEBURG RESOURCES CO.
23129 VAUGHN RD.
VENETA, OREGON 97487

DRAWN BY: BAC
CHECKED BY: SRS
JOB NO.: 2023-098
DATE: 3/19/2024
SHEET: 1 OF 2

REGISTERED PROFESSIONAL LAND SURVEYOR
Stephan R. Stys
OREGON
NOVEMBER 8, 2022
STEPHAN R. STYS
86454PLS
EXPIRES 06/30/2026

**PROPERTY SURVEY LOCATED IN THE NE 1/4 AND SE 1/4 OF SECTION 24,
TOWNSHIP 20 SOUTH, RANGE 10 WEST, W.M., DOUGLAS COUNTY, OREGON.**

FILED
DATE: 9/4/2024 BY: SC
THIS SURVEY CONSISTS OF:
MAP: 4184-18 2/3
NARRATIVE:
CORNER RPT.:
DOUGLAS COUNTY SURVEYOR

NOTE 1 PLSS 700400

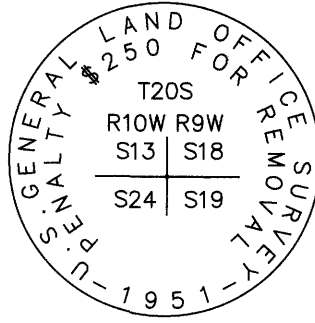
SECTION CORNER COMMON TO SECTIONS 13, 18, 19 AND 24

FOUND MONUMENT:
A 2-1/2" BRASS CAP ON A 2" IRON PIPE AS SET PER DCSO RECORDS VOL. 27, PAGE 11676 AND MARKED AS SHOWN. SET STEEL POST ALONGSIDE MONUMENT.

FOUND BT'S:
A 60" ROTTEN FIR STUMP, WITH NO MARKS BEARS S31°E 22.4' (S31°15'E PER DCSO RECORDS VOL. 27, PAGE 11676).
A 54" ROTTEN FIR STUMP, WITH NO MARKS BEARS S09°E 13.2' (PER DCSO RECORDS VOL. 27, PAGE 11676).
A 48" ROTTEN FIR STUMP, WITH NO MARKS BEARS N75°W 22.4' (PER DCSO RECORDS VOL. 27, PAGE 11676).

NEW BT'S:
A 19" ALDER, BARK SCRIBED "SE S13 BT" WITH X-CHOP AND TAG BEARS N13°W 1.4' TO A SPIKE AT SIDE CENTER.
A 40" CEDAR, FACED & SCRIBED "NW S19 BT" WITH X-CHOP AND TAG BEARS S35°E 22.4' TO A SPIKE AT SIDE CENTER.
A 14" CEDAR, FACED & SCRIBED "NE S24 BT" WITH X-CHOP AND TAG BEARS S05°W 21.7' TO A SPIKE AT SIDE CENTER.
A 13" FIR, FACED & SCRIBED "SE S13 BT" WITH X-CHOP AND TAG BEARS N78°W 17.5' TO A SPIKE AT SIDE CENTER.

LAT. AND LONG. PER GARMIN ETREX HAND HELD GPS:
N:43°49'41.1" W:123°49'36.4".



NOTE 5 PLSS 640340

CENTER 1/4 CORNER OF SECTION 24

SET MONUMENT:
SET 5/8" IRON REBAR WITH A RED CAP MARKED "86454 PLS".
SET STEEL POST ALONGSIDE CORNER.

NEW BT'S:
A 21" HEMLOCK, FACED & SCRIBED "C 1/4 S24 BT" WITH X-CHOP AND TAG BEARS S67°E 7.6' TO A SPIKE AT SIDE CENTER.
A 15" ALDER, BARK SCRIBED "C 1/4 S24 BT" WITH X-CHOP AND TAG BEARS S27°E 24.3' TO A SPIKE AT SIDE CENTER.
A 13" ALDER, BARK SCRIBED "C 1/4 S24 BT" WITH X-CHOP AND TAG BEARS S16°W 19.2' TO A SPIKE AT SIDE CENTER.
AN 11" CEDAR, FACED & SCRIBED "C 1/4 S24 BT" WITH X-CHOP AND TAG BEARS N65°W 35.2' TO A SPIKE AT SIDE CENTER.

LAT. AND LONG. PER GARMIN ETREX HAND HELD GPS:
N:43°49'04.3" W:123°50'18.1".

NOTE 6 PLSS 660340

CENTER-EAST 1/16 CORNER OF SECTION 24

SET MONUMENT:
SET 5/8" IRON REBAR WITH A RED CAP MARKED "86454 PLS".
SET STEEL POST ALONGSIDE CORNER.

NEW BT'S:
A 19" FIR, FACED & SCRIBED "CE 1/16 S24 BT" WITH X-CHOP AND TAG BEARS N80°E 22.4' TO A SPIKE AT SIDE CENTER.
A 23" DOUG FIR, FACED & SCRIBED "CE 1/16 S24 BT" WITH X-CHOP AND TAG BEARS N46°W 12.5' TO A SPIKE AT SIDE CENTER.

LAT. AND LONG. PER GARMIN ETREX HAND HELD GPS:
N:43°49'06.5" W:123°49'59.7".

NOTE 2 PLSS 700340

1/4 CORNER COMMON TO SECTIONS 19 AND 24

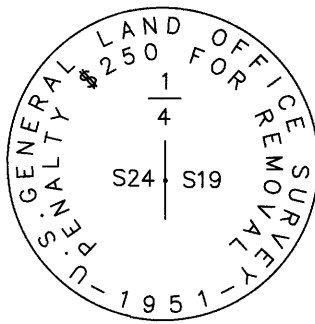
FOUND MONUMENT:
A 2-1/2" BRASS CAP ON A 1" IRON PIPE AS SET PER DCSO RECORDS VOL. 27, PAGE 11675 AND MARKED AS SHOWN.

FOUND BT'S:
A 36" CEDAR STUMP, WITH OPEN FACE BEARS S15°E 41.5' (S14°45'E PER DCSO RECORDS VOL. 27, PAGE 11675). ADDED A NEW TAG.
A 50" CEDAR STUMP, WITH OPEN FACE BEARS S60°30'W 26.4' (PER DCSO RECORDS VOL. 27, PAGE 11675). ADDED A NEW TAG.

NEW BO'S:
A STEEL POST BEARS SOUTH 1.5'.
A STEEL POST BEARS WEST 1.5'.

NEW BT'S:
A 21" ALDER, BARK SCRIBED "W 1/4 S19 BT" WITH X-CHOP AND TAG BEARS S54°E 47.3' TO A SPIKE AT SIDE CENTER.
A 21" ALDER, BARK SCRIBED "E 1/4 S24 BT" WITH X-CHOP AND TAG BEARS S83°W 19.6' TO A SPIKE AT SIDE CENTER.
A 19" CEDAR, FACED & SCRIBED "E 1/4 S24 BT" WITH X-CHOP AND TAG BEARS N42°W 31.4' TO A SPIKE AT SIDE CENTER.

LAT. AND LONG. PER GARMIN ETREX HAND HELD GPS:
N:43°49'10.2" W:123°49'42.0".



NOTE 7 PLSS 660400

E 1/16 CORNER COMMON TO SECTIONS 13 AND 24

SET MONUMENT:
SET 5/8" IRON REBAR WITH A RED CAP MARKED "86454 PLS". CORNER IS SET IN LANDING EAST OF "EAST FORK SPENCER CREEK RD".

NEW BT'S:
A 19" DOUG FIR, FACED & SCRIBED "E 1/16 S24 BT" WITH X-CHOP AND TAG BEARS S58°E 77.1' TO A SPIKE AT SIDE CENTER.
A 26" DOUG FIR, FACED & SCRIBED "E 1/16 S13 BT" WITH X-CHOP AND TAG BEARS S80°W 80.2' TO A SPIKE AT SIDE CENTER.

NEW BO:
A STEEL POST, WITH TAG BEARS N71°E S2.5.

LAT. AND LONG. PER GARMIN ETREX HAND HELD GPS:
N:43°49'36.6" W:123°49'54.5".

NOTE 3 PLSS 700300

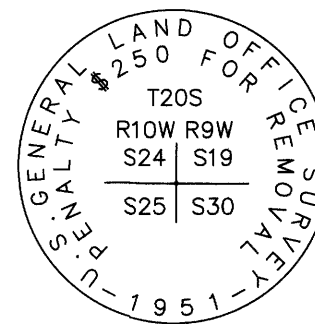
SECTION CORNER COMMON TO SECTIONS 19, 24, 25 AND 30

FOUND MONUMENT:
A 2-1/2" BRASS CAP ON A 2" IRON PIPE AS SET PER DCSO RECORDS VOL. 27, PAGE 11674-11675 AND MARKED AS SHOWN. A 1/2" IRON PIPE 3" TALL SITS ALONGSIDE MONUMENT. SET STEEL POST ALONGSIDE MONUMENT.

RECORD BT'S:
NO RECORD BT'S FOUND FOR THIS CORNER.

NEW BT'S:
A 17" MAPLE, BARK SCRIBED "SW S19 BT" WITH X-CHOP AND TAG BEARS N25°E 21.7' TO A SPIKE AT SIDE CENTER.
A 21" MAPLE, BARK SCRIBED "SW S19 BT" WITH X-CHOP AND TAG BEARS N52°E 31.9' TO A SPIKE AT SIDE CENTER.
A 27" MAPLE, FACED & SCRIBED "NE S25 BT" WITH X-CHOP AND TAG BEARS S06°W 20.7' TO A SPIKE AT SIDE CENTER.
A 12" FIR, FACED & SCRIBED "SE S24 BT" WITH X-CHOP AND TAG BEARS N81°W 12.8' TO A SPIKE AT SIDE CENTER.

LAT. AND LONG. PER GARMIN ETREX HAND HELD GPS:
N:43°48'37.0" W:123°49'47.7".



NOTE 8 PLSS 600400

SECTION CORNER COMMON TO SECTIONS 13, 14, 23 AND 24

FOUND BT'S:
A 60" FIR STUMP, BEARS N79°W 105.60' (N78°W PER DCSO RECORDS VOL. 27, PAGE 11692).
A 40" CEDAR, BEARS N69°E 5.30' (N70°E PER DCSO RECORDS VOL. 27, PAGE 11692).

NOTE 9 PLSS 600300

SECTION CORNER COMMON TO SECTIONS 23, 24, 25 AND 26

FOUND BT'S:
A 40" FIR STUMP, BEARS N55°W 22.40' (N57°15'W PER DCSO RECORDS VOL. 27, PAGE 11689-11690).
A 50" FIR STUMP, BEARS S15°E 64.00' (S13°E PER DCSO RECORDS VOL. 27, PAGE 11689-11690).

GENERAL NOTE:
LAT. AND LONG. ARE FROM A GARMIN ETREX HAND HELD GPS AND DOES NOT PRODUCE SURVEY GRADE COORDINATES.

NOTE 4 PLSS 640300

1/4 CORNER COMMON TO SECTIONS 24 AND 25

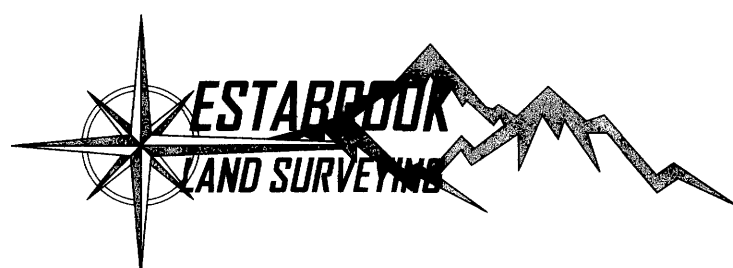
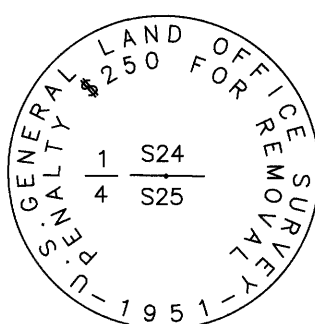
FOUND MONUMENT:
A 2-1/2" BRASS CAP ON A 1" IRON PIPE AS SET PER DCSO RECORDS VOL. 27, PAGE 11690 AND MARKED AS SHOWN.

FOUND BT'S:
A 28" HEMLOCK STUMP, WITH HEALED FACE BEARS S55°E 28.0' (PER DCSO RECORDS VOL. 27, PAGE 11690).
A 64" FIR SNAG, WITH HEALED FACE AND TAG BEARS N73°W 42.2' (PER DCSO RECORDS VOL. 27, PAGE 11690).

NEW BO'S:
A STEEL POST BEARS NORTH 2.0'.
A STEEL POST BEARS EAST 2.0'.

NEW BT'S:
A 13" ALDER, BARK SCRIBED "N 1/4 S25 BT" WITH X-CHOP AND TAG BEARS S40°W 15.2' TO A SPIKE AT SIDE CENTER.
A 20" ALDER, BARK SCRIBED "S 1/4 S24 BT" WITH X-CHOP AND TAG BEARS N70°W 9.0' TO A SPIKE AT SIDE CENTER.

LAT. AND LONG. PER GARMIN ETREX HAND HELD GPS:
N:43°48'36.4" W:123°50'22.1".



PO BOX 778
COOS BAY, OR 97420
541-294-6915
WWW.ESTABROOKLANDSURVEYING.COM

PREPARED FOR:
ROSEBURG RESOURCES CO.
23129 VAUGHN. RD.
VENETA, OREGON 97487

DRAWN BY: BAC
CHECKED BY: SRS
JOB NO.: 2023-098
DATE: 3/19/2024
SHEET: 2 OF 2

REGISTERED
PROFESSIONAL
LAND SURVEYOR
Stephan R. Stys
OREGON
NOVEMBER 6, 2022
STEPHAN R. STYS
86454PLS
EXPIRES 06/30/246