

PROPERTY SURVEY LOCATED IN THE NW 1/4 & SW 1/4 OF SECTION 6, TOWNSHIP 21 SOUTH, RANGE 11 WEST, W.M., DOUGLAS COUNTY, OREGON.

FILED
 DATE: 9-3-2024 BY: DR
 THIS SURVEY CONSISTS OF:
 MAP: M184-17A & B
 NARRATIVE: _____
 CORNER RPT.: _____
 DOUGLAS COUNTY SURVEYOR

NOTE 1

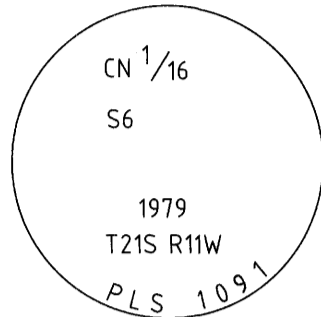
CENTER-NORTH 1/16 CORNER OF SECTION 6.

FOUND MONUMENT:
 A 2-1/2" IRON PIPE W/ 2-1/2" BRASS CAP AS SET PER MAP FILE NO. 78-76.
 SET FIBERGLASS ROD ALONGSIDE.

FOUND BT'S:
 A 14" ROTTEN HEMLOCK STUMP, W/ NO VISIBLE MARKS BEARS N20°30'E 8.71'
 (PER MAP FILE NO. 78-76).
 ROTTEN REMAINS OF A HEMLOCK, BEARS S63°30'E 5.28'
 (PER MAP FILE NO. 78-76).
 A 14" DOUG FIR, W/ X-CHOP AND TAG BEARS S45°E 8.3' TO SPIKE
 (PER CS 65/102-32).
 A 16" DOUG FIR, W/ X-CHOP AND TAG BEARS S50°W 3.5' TO SPIKE
 (PER CS 65/102-32).

NEW BO:
 A STEEL FENCE POST, BEARS WEST 0.5'

LAT. AND LONG. PER GARMIN ETREX HAND HELD GPS:
 N:43°46'45.7" W:124°03'21.9"



NOTE 4

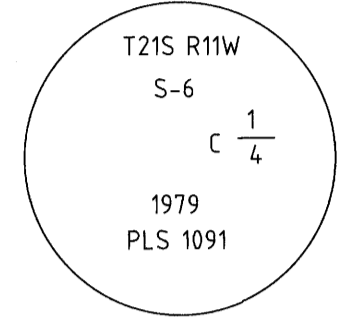
CENTER 1/4 CORNER OF SECTION 6.

FOUND MONUMENT:
 A 2-1/2" IRON PIPE W/ 2-1/2" BRASS CAP AS SET PER MAP FILE NO. 78-76. SET
 FIBERGLASS ROD ALONGSIDE.

FOUND BT'S:
 A 13" DOUG FIR, W/ X-CHOP AND TAG BEARS S01°E 19.8' TO SPIKE
 (PER CS/103-012).
 A 17" DOUG FIR, W/ X-CHOP AND TAG BEARS S51°W 11.5' TO SPIKE
 (PER CS/103-012).
 A 16" DOUG FIR, W/ X-CHOP AND TAG BEARS N19°E 2.5' TO SPIKE
 (N19°W 2.5' PER CS/103-012).

NEW BT:
 A 19" DOUG FIR, FACED & SCRIBED "C 1/4 S6 BT" WITH X-CHOP AND TAG BEARS
 S86°E 12.7' TO A SPIKE AT SIDE CENTER.

LAT. AND LONG. PER GARMIN ETREX HAND HELD GPS:
 N:43°46'33.4" W:124°03'21.2"



NOTE 2

NORTH-WEST 1/16 CORNER OF SECTION 6.

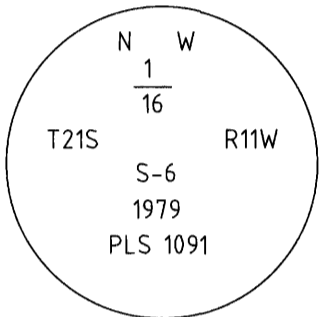
FOUND MONUMENT:
 A 2-1/2" IRON PIPE W/ 2-1/2" BRASS CAP AS SET PER MAP FILE NO. 78-76.
 SET FIBERGLASS ROD ALONGSIDE.

FOUND BT'S:
 A 9" HEMLOCK, W/ TAG BEARS S38°E 1.7' (PER CS 65/102-31).
 A 17" DOUG FIR, W/ HEALED FACE AND TAG BEARS S88°E 11.9'
 (PER CS 63/154-26).

FOUND BO:
 A STEEL FENCE POST, BEARS S01°42'E 12.1' (PER MAP FILE NO. 78-76).

NEW BO'S:
 A U-POST, BEARS EAST 0.4'
 A STEEL FENCE POST, BEARS N64°W 0.9'

LAT. AND LONG. PER GARMIN ETREX HAND HELD GPS:
 N:43°46'46.1" W:124°03'39.6"



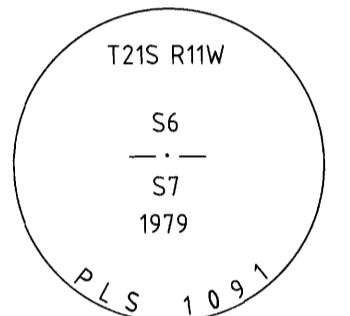
NOTE 5

1/4 CORNER COMMON TO SECTION 6 AND 7.

FOUND MONUMENT:
 A 2-1/2" IRON PIPE W/ 2-1/2" BRASS CAP AS SET PER MAP FILE NO. 78-76. SET
 FIBERGLASS ROD ALONGSIDE.

FOUND BT'S:
 A 11" DOUG FIR, W/ X-CHOP AND TAG BEARS N51°E 11.4' (PER CS 65/89-58).
 A 20"X6.5' TALL DOUG FIR STUMP, W/ HEALED FACE AND TAG BEARS N62°55'W
 25.0' (PER MAP FILE NO. 78-76).
 A 10" DOUG FIR, W/ X-CHOP AND TAG BEARS N59°W 13.95' (PER CS 65/89-58).

LAT. AND LONG. PER GARMIN ETREX HAND HELD GPS:
 N:43°46'08.3" W:124°03'19.7"



GENERAL NOTE:
 LAT. AND LONG. ARE FROM A GARMIN ETREX HAND HELD GPS AND DOES NOT
 PRODUCE SURVEY GRADE COORDINATES.

NOTE 3

WITNESS CORNER TO THE CENTER-WEST 1/16 CORNER OF SECTION 6.

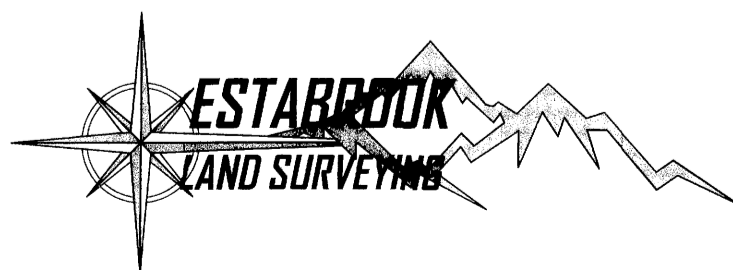
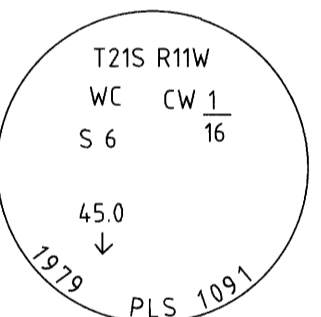
FOUND MONUMENT:
 A 2-1/2" IRON PIPE W/ 2-1/2" BRASS CAP AS SET PER MAP FILE NO. 78-76.
 SET FIBERGLASS ROD ALONGSIDE.

FOUND BT'S:
 A 19" SPRUCE, W/ HEALED FACE AND TAG BEARS N52°30'E 13.3' (PER MAP FILE
 NO. 78-76).
 A 27" ALDER WINDFALL, STILL ALIVE W/ NO VISIBLE MARKS AND TAG BEARS
 S06°E 39.2' (PER MAP FILE NO. 78-76).

NEW BT:
 A 18" SPRUCE, FACED & SCRIBED "X BT" WITH X-CHOP AND TAG BEARS N43°W
 15.8' TO A SPIKE AT SIDE CENTER.

NEW BO:
 A 1" IRON ROD, BEARS S02°E 45.0'

LAT. AND LONG. PER GARMIN ETREX HAND HELD GPS:
 N:43°46'34.2" W:124°03'40.0"



PO BOX 778
 COOS BAY, OR 97420
 541-294-6915
 WWW.ESTABROOKLANDSURVEYING.COM

PREPARED FOR:
 RAYONIER
 2990 BROADWAY AVE.
 NORTH BEND, OR 97459

DRAWN BY: BAC
 CHECKED BY: SRS
 JOB NO.: 2023-055
 DATE: 10/11/2023
 SHEET: 2 OF 2

REGISTERED
 PROFESSIONAL
 LAND SURVEYOR

 OREGON
 NOVEMBER 8, 2022
 STEPHAN R. STYS
 86454PLS
 EXPIRES 06/30/2026