

**MAP OF SURVEY**

THE NORTH HALF OF SECTION 22, TOWNSHIP 32 SOUTH RANGE 6 WEST WILLAMETTE MERIDIAN  
DOUGLAS COUNTY, OREGON

SURVEY FOR: JUNIPER PROPERTIES, LLC  
P.O. BOX 1127 ROSEBURG, OREGON 97470  
SURVEY BY: LONE ROCK TIMBER MANAGEMENT, LLC  
P.O. BOX 1127 ROSEBURG, OREGON 97470

DATE: AUGUST 2024 TRACT: M3206W22

FILED  
DATE: 8-19-2024 BY: [Signature]  
THIS SURVEY CONSISTS OF:  
MAP: M184-12A.B  
NARRATIVE:  
CORNER RPT:  
DOUGLAS COUNTY SURVEYOR

MAP FILE M184-12A

SEE PAGE 2 FOR CORNER INFORMATION

PAGE 1 OF 2

WEYERHAEUSER COMPANY  
PROPERTY

BLM  
PUBLIC DOMAIN  
PROPERTY

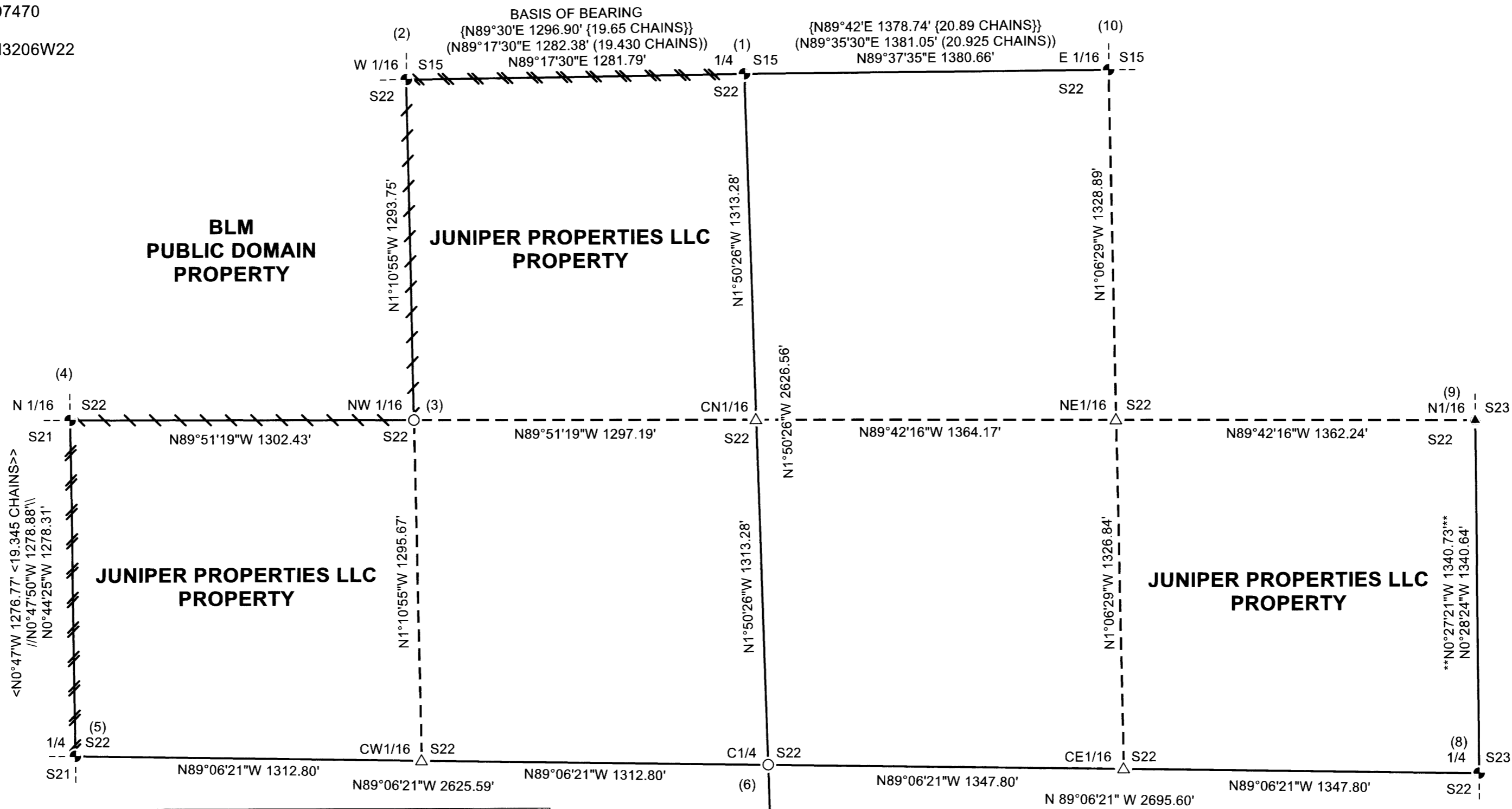
JUNIPER PROPERTIES LLC  
PROPERTY

JUNIPER PROPERTIES LLC  
PROPERTY

JUNIPER PROPERTIES LLC  
PROPERTY

WOODSKOW  
PROPERTY

HTFF OR-T LLC  
PROPERTY



**LEGEND**

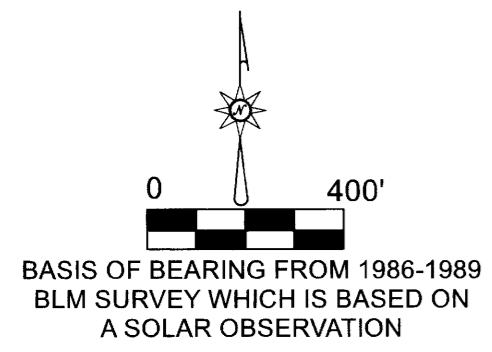
- ◆ FOUND BLM BRASS CAP AS PER RECORD, SEE CORNER NOTES ATTACHED
- ▲ FOUND 1" IRON ROD AS PER 1978 BRANDT SURVEY M69-3 FILED IN THE DOUGLAS COUNTY SURVEYOR'S OFFICE
- SET 5/8" X 40" IRON ROD WITH 2.5" ALUMINUM CAP MARKED AS SHOWN ON CORNER NOTES ATTACHED
- △ COMPUTED POINT
- { } RECORD AS PER 1966-1967 BLM DEPENDENT RESURVEY VOLUME 34 PAGES 13987-13988 FILED IN THE DOUGLAS COUNTY SURVEYOR'S OFFICE
- < > RECORD AS PER 1976 BLM DEPENDENT RESURVEY VOLUME 41 PAGE 16315-16316 FILED IN THE DOUGLAS COUNTY SURVEYOR'S OFFICE
- \*\* \*\* RECORD AS PER 1978 BRANDT SURVEY M69-3 FILED IN THE DOUGLAS COUNTY SURVEYOR'S OFFICE
- ( ) RECORD AS PER 1986-1989 BLM CORRECTIVE DEPENDENT RESURVEY/ DEPENDENT RESURVEY VOLUME 48 PAGES 18573-18574 FILED IN THE DOUGLAS COUNTY SURVEYOR'S OFFICE
- // \ RECORD AS PER 1990 TEMPLIN SURVEY M109-44 FILED IN THE DOUGLAS COUNTY SURVEYOR'S OFFICE
- [ ] RECORD AS PER 2004 HOFFINE CORNER RENEWAL CS 65/49-26 FILED IN THE DOUGLAS COUNTY SURVEYOR'S OFFICE
- ==== LINES SURVEYED, BLAZED, PAINTED, RIBBONED, TAGGED AND POSTED WITH 5 1/2" GALVANIZED STEEL POSTS
- ==== LINES SURVEYED, BLAZED, PAINTED, RIBBONED AND TAGGED
- LINES SURVEYED
- - - LINES COMPUTED

**NARRATIVE:**  
THE PURPOSE OF THIS SURVEY IS TO ESTABLISH PROPERTY CORNERS AND MARK PROPERTY LINES FOR THE JUNIPER PROPERTIES, LLC. PROPERTY LOCATED IN SECTION 22, TOWNSHIP 32 SOUTH RANGE 6 WEST W.M., FOR TIMBER MANAGEMENT PURPOSES. WE BEGAN THIS SURVEY BY SEARCHING FOR ALL KNOWN MONUMENTS; (CORNERS 1, 2, 4, 5, 7, 8, 9, AND 10). WE ALSO SEARCHED IN THE AREA OF CORNER 3, THE NORTHWEST 1/16TH OF SECTION 22, AND FOUND EVIDENCE OF PREVIOUSLY MARKED PROPERTY LINES, BUT DID NOT DISCOVER EVIDENCE OF AN UNRECORDED CORNER MONUMENT. WE COULD FIND NO RECORD OF SECTION 22, TOWNSHIP 32 SOUTH, RANGE 6 WEST, W.M. EVER BEING OFFICIALLY SUBDIVIDED BY PRIVATE OR BLM SURVEYORS. THE COMMON PROPERTY LINES BETWEEN JUNIPER PROPERTIES AND THE BLM PUBLIC DOMAIN PROPERTY WITHIN THE NORTHWEST QUARTER OF SECTION 22, APPEAR TO HAVE BEEN MARKED FOR TIMBER MANAGEMENT PURPOSES, AT AN UNDETERMINED DATE PRIOR TO THIS SURVEY.

WE BEGAN OUR SURVEY AT GPS CONTROL LOCATED ON A DIRT SURFACE LOGGING LANDING NEAR THE EAST 1/16TH OF SECTIONS 15 AND 22 AND RAN A RANDOM TRAVERSE THROUGH THE QUARTER CORNER OF SECTIONS 15 AND 22 (CORNER 1), THE WEST 1/16TH OF SECTIONS 15 AND 22 (CORNER 2), CONTROL NEAR THE NORTHWEST 1/16TH OF SECTION 22, THE NORTH 1/16TH OF SECTIONS 21 AND 22 (CORNER 4), THE QUARTER CORNER OF SECTIONS 21 AND 22 (CORNER 5) AND CLOSED OUR TRAVERSE TO GPS CONTROL IN AN OPENING NEAR THE QUARTER CORNER OF SECTIONS 21 AND 22. WE ALSO RAN A RANDOM TRAVERSE FROM OUR ESTABLISHED GPS CONTROL NEAR THE EAST 1/16TH OF SECTION 15 AND 22 THROUGH THE QUARTER CORNER OF SECTIONS 22 AND 27 (CORNER 7) AND CLOSED OUR TRAVERSE TO GPS CONTROL IN AN EXISTING DIRT SURFACE LOGGING ROAD NEAR THIS CORNER. WE ALSO PERFORMED A GPS SITE CALIBRATION USING TRIMBLE BUSINESS CENTER AND OUR LOCAL TOTAL STATION TRAVERSE DATA, TO TRANSFORM OUR GPS DATA TO GROUND DISTANCE. WE THEN TOOK GPS OBSERVATIONS ON THE QUARTER CORNER OF SECTIONS 22 AND 23 (CORNER 8), THE NORTH 1/16TH CORNER OF SECTIONS 22 AND 23 (CORNER 9), AND THE EAST 1/16TH CORNER OF SECTIONS 15 AND 22 (CORNER 10) IN ORDER TO SUBDIVIDE SECTION 22 AND TO VERIFY OUR GPS OBSERVATIONS WITH RECORD SURVEY INFORMATION. WE THEN ROTATED OUR SURVEY BETWEEN THE QUARTER CORNER OF SECTIONS 15 AND 22 (CORNER 1) AND THE WEST 1/16TH CORNER OF SECTIONS 15 AND 22 (CORNER 2) TO THE BLM'S 1986-1989 BASIS OF BEARING. WE THEN PROPERLY COMPUTED THE POSITION OF THE CENTER QUARTER OF SECTION 22 (CORNER 6) AND SET OUR MONUMENT USING GPS CONTROL AND A TOTAL STATION TRAVERSE. UTILIZING OUR COMPUTED AND SET CENTER QUARTER POSITION, WE THEN PROPERLY COMPUTED THE PROPORTIONED POSITIONS OF THE CENTER NORTH 1/16TH AND THE CENTER WEST 1/16TH. WE THEN UTILIZED THESE COMPUTED POSITIONS AND THE FOUND MONUMENTS AT THE WEST 1/16TH CORNER OF SECTIONS 15 AND 22 (CORNER 2) AND THE NORTH 1/16TH CORNER OF SECTIONS 21 AND 22 (CORNER 4) TO PROPERLY SUBDIVIDE THE NORTHWEST QUARTER OF SECTION 22 AND SET OUR MONUMENT AT THE NORTHWEST 1/16TH CORNER OF SECTION 22. RECOVERED EXISTING BLAZES AND OTHER EVIDENCE TO THE NORTH AND WEST OF THE NORTHWEST 1/16TH CORNER (CORNER 3), WERE NOT USED AS EVIDENCE OF THE CORNER, BUT MATCH VERY WELL WITH THE MONUMENT WE CALCULATED AND SET. WE ALSO PERFORMED A COMPUTATIONAL SUBDIVISION OF THE NORTHEAST QUARTER OF SECTION 22, IN ORDER TO SHOW TIES BETWEEN OUR FOUND AND COMPUTED CORNER POSITIONS.

PROPERTY LINES SHOWN HEREON AS MARKED WERE QUARTER BLAZED AND PAINTED WITH RED PAINT, RED PROPERTY LINE RIBBON AND FLORESCENT BLUE RIBBON WERE PLACED ON TRUE PROPERTY LINE AND ALUMINUM PROPERTY LINE TAGS WERE PLACED AT INTERVALS ALONG THE LINES. 5 1/2-FOOT-TALL STEEL GALVANIZED POSTS WERE PLACED ON TRUE LINE BETWEEN THE WEYERHAEUSER, HTFF OR-T, AND JUNIPER PROPERTIES (CORNER 1 TO CORNER 2 AND CORNER 4 TO CORNER 5), BEARING TREES WERE SCRIBED AT ROOT CROWN WITH DISTANCES MEASURED TO AN ALUMINUM NAIL AT SIDE CENTER AND BEARINGS WERE COMPUTED BY TURNING HORIZONTAL ANGLES FROM TRAVERSE CONTROL POINTS TO AN ALUMINUM NAIL IN FACE CENTER. THIS SURVEY WAS CONDUCTED USING A TOPCON ES62 AND A TRIMBLE C5 TOTAL STATIONS. TRIMBLE R10 AND TRIMBLE R12I GNSS AND RTK RECEIVERS WERE ALSO EMPLOYED, UTILIZING A LOCAL BASE AND SITE CALIBRATED WITH TRIMBLE BUSINESS CENTER SOFTWARE TO TERRESTRIAL TOTAL STATION CONTROL. BRETT RAGON, IGNACIO ROMAN, AND TREVOR CLEMO ASSISTED ME DURING THIS SURVEY.

MAP FILE M184-12A



REGISTERED PROFESSIONAL LAND SURVEYOR  
*Daniel E. Saily*  
OREGON  
NOVEMBER 10, 2020  
DANIEL E. SAILY  
85006  
EXPIRES: 6/30/2026