

MAP OF SURVEY

THE NORTH HALF OF SECTION 22, TOWNSHIP 32 SOUTH RANGE 6 WEST WILLAMETTE MERIDIAN
DOUGLAS COUNTY, OREGON

SURVEY FOR: JUNIPER PROPERTIES, LLC
P.O. BOX 1127 ROSEBURG, OREGON 97470
SURVEY BY: LONE ROCK TIMBER MANAGEMENT, LLC
P.O. BOX 1127 ROSEBURG, OREGON 97470

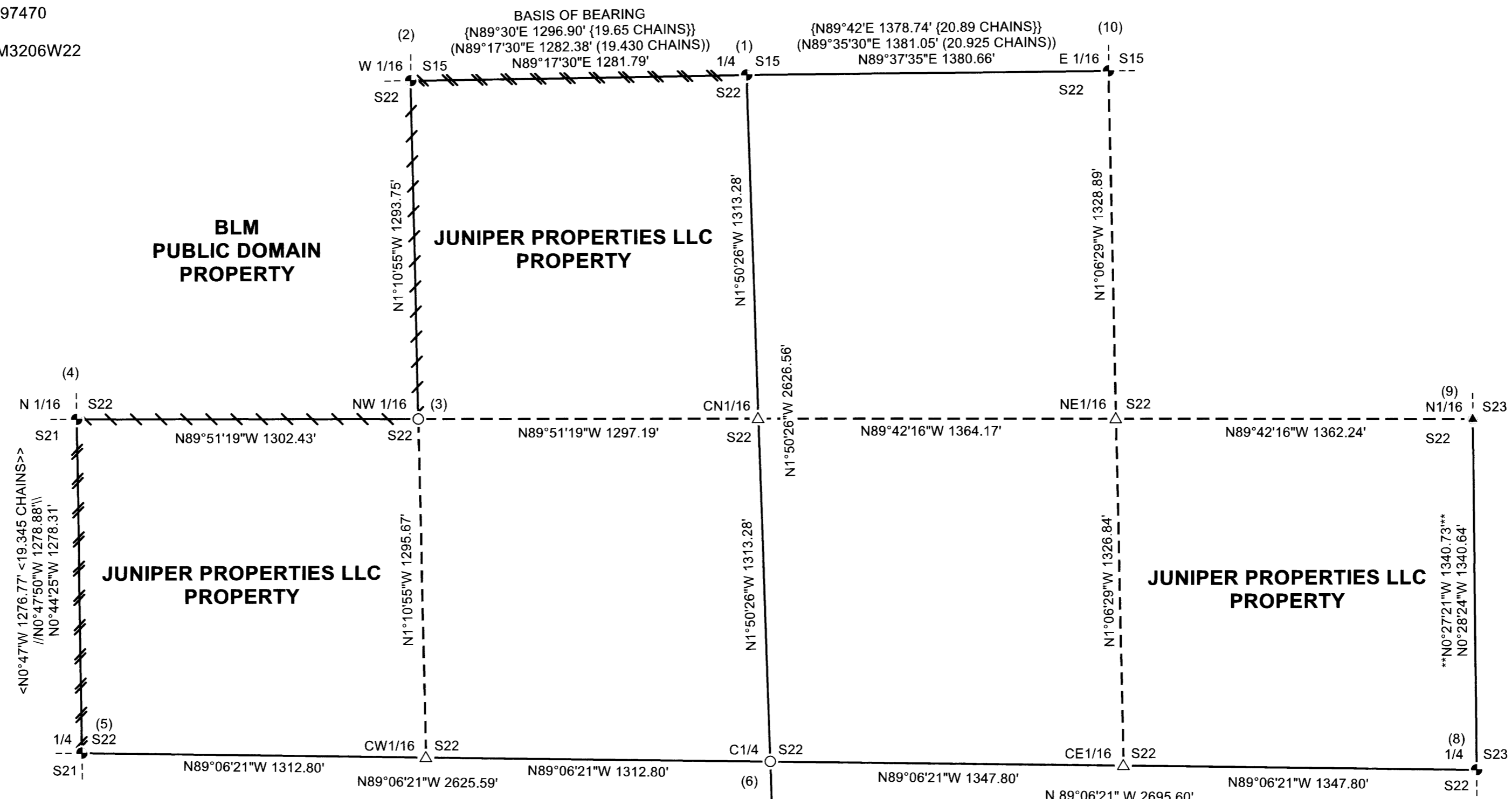
DATE: AUGUST 2024 TRACT: M3206W22

FILED
DATE: 8-19-2024 BY: [Signature]
THIS SURVEY CONSISTS OF:
MAP: M184-12A.B
NARRATIVE:
CORNER RPT:
DOUGLAS COUNTY SURVEYOR

MAP FILE M184-12A

SEE PAGE 2 FOR CORNER INFORMATION

PAGE 1 OF 2



LEGEND

- ◆ FOUND BLM BRASS CAP AS PER RECORD, SEE CORNER NOTES ATTACHED
- ▲ FOUND 1" IRON ROD AS PER 1978 BRANDT SURVEY M69-3 FILED IN THE DOUGLAS COUNTY SURVEYOR'S OFFICE
- SET 5/8" X 40" IRON ROD WITH 2.5" ALUMINUM CAP MARKED AS SHOWN ON CORNER NOTES ATTACHED
- △ COMPUTED POINT
- { } RECORD AS PER 1966-1967 BLM DEPENDENT RESURVEY VOLUME 34 PAGES 13987-13988 FILED IN THE DOUGLAS COUNTY SURVEYOR'S OFFICE
- < > RECORD AS PER 1976 BLM DEPENDENT RESURVEY VOLUME 41 PAGE 16315-16316 FILED IN THE DOUGLAS COUNTY SURVEYOR'S OFFICE
- ** ** RECORD AS PER 1978 BRANDT SURVEY M69-3 FILED IN THE DOUGLAS COUNTY SURVEYOR'S OFFICE
- () RECORD AS PER 1986-1989 BLM CORRECTIVE DEPENDENT RESURVEY/ DEPENDENT RESURVEY VOLUME 48 PAGES 18573-18574 FILED IN THE DOUGLAS COUNTY SURVEYOR'S OFFICE
- // \\ RECORD AS PER 1990 TEMPLIN SURVEY M109-44 FILED IN THE DOUGLAS COUNTY SURVEYOR'S OFFICE
- [] RECORD AS PER 2004 HOFFINE CORNER RENEWAL CS 65/49-26 FILED IN THE DOUGLAS COUNTY SURVEYOR'S OFFICE
- ==== LINES SURVEYED, BLAZED, PAINTED, RIBBONED, TAGGED AND POSTED WITH 5 1/2" GALVANIZED STEEL POSTS
- ==== LINES SURVEYED, BLAZED, PAINTED, RIBBONED AND TAGGED
- LINES SURVEYED
- - - LINES COMPUTED

0 400'

BASIS OF BEARING FROM 1986-1989 BLM SURVEY WHICH IS BASED ON A SOLAR OBSERVATION

REGISTERED PROFESSIONAL LAND SURVEYOR

Daniel E. Saily

OREGON
NOVEMBER 10, 2020
DANIEL E. SAILY
85006
EXPIRES: 6/30/2026

NARRATIVE:

THE PURPOSE OF THIS SURVEY IS TO ESTABLISH PROPERTY CORNERS AND MARK PROPERTY LINES FOR THE JUNIPER PROPERTIES, LLC. PROPERTY LOCATED IN SECTION 22, TOWNSHIP 32 SOUTH RANGE 6 WEST W.M., FOR TIMBER MANAGEMENT PURPOSES. WE BEGAN THIS SURVEY BY SEARCHING FOR ALL KNOWN MONUMENTS; (CORNERS 1, 2, 4, 5, 7, 8, 9, AND 10). WE ALSO SEARCHED IN THE AREA OF CORNER 3, THE NORTHWEST 1/16TH OF SECTION 22, AND FOUND EVIDENCE OF PREVIOUSLY MARKED PROPERTY LINES, BUT DID NOT DISCOVER EVIDENCE OF AN UNRECORDED CORNER MONUMENT. WE COULD FIND NO RECORD OF SECTION 22, TOWNSHIP 32 SOUTH, RANGE 6 WEST, W.M. EVER BEING OFFICIALLY SUBDIVIDED BY PRIVATE OR BLM SURVEYORS. THE COMMON PROPERTY LINES BETWEEN JUNIPER PROPERTIES AND THE BLM PUBLIC DOMAIN PROPERTY WITHIN THE NORTHWEST QUARTER OF SECTION 22, APPEAR TO HAVE BEEN MARKED FOR TIMBER MANAGEMENT PURPOSES, AT AN UNDETERMINED DATE PRIOR TO THIS SURVEY.

WE BEGAN OUR SURVEY AT GPS CONTROL LOCATED ON A DIRT SURFACE LOGGING LANDING NEAR THE EAST 1/16TH OF SECTIONS 15 AND 22 AND RAN A RANDOM TRAVERSE THROUGH THE QUARTER CORNER OF SECTIONS 15 AND 22 (CORNER 1), THE WEST 1/16TH OF SECTIONS 15 AND 22 (CORNER 2), CONTROL NEAR THE NORTHWEST 1/16TH OF SECTION 22, THE NORTH 1/16TH OF SECTIONS 21 AND 22 (CORNER 4), THE QUARTER CORNER OF SECTIONS 21 AND 22 (CORNER 5) AND CLOSED OUR TRAVERSE TO GPS CONTROL IN AN OPENING NEAR THE QUARTER CORNER OF SECTIONS 21 AND 22. WE ALSO RAN A RANDOM TRAVERSE FROM OUR ESTABLISHED GPS CONTROL NEAR THE EAST 1/16TH OF SECTION 15 AND 22 THROUGH THE QUARTER CORNER OF SECTIONS 22 AND 27 (CORNER 7) AND CLOSED OUR TRAVERSE TO GPS CONTROL IN AN EXISTING DIRT SURFACE LOGGING ROAD NEAR THIS CORNER. WE ALSO PERFORMED A GPS SITE CALIBRATION USING TRIMBLE BUSINESS CENTER AND OUR LOCAL TOTAL STATION TRAVERSE DATA, TO TRANSFORM OUR GPS DATA TO GROUND DISTANCE. WE THEN TOOK GPS OBSERVATIONS ON THE QUARTER CORNER OF SECTIONS 22 AND 23 (CORNER 8), THE NORTH 1/16TH CORNER OF SECTIONS 22 AND 23 (CORNER 9), AND THE EAST 1/16TH CORNER OF SECTIONS 15 AND 22 (CORNER 10) IN ORDER TO SUBDIVIDE SECTION 22 AND TO VERIFY OUR GPS OBSERVATIONS WITH RECORD SURVEY INFORMATION. WE THEN ROTATED OUR SURVEY BETWEEN THE QUARTER CORNER OF SECTIONS 15 AND 22 (CORNER 1) AND THE WEST 1/16TH CORNER OF SECTIONS 15 AND 22 (CORNER 2) TO THE BLM'S 1986-1989 BASIS OF BEARING. WE THEN PROPERLY COMPUTED THE POSITION OF THE CENTER QUARTER OF SECTION 22 (CORNER 6) AND SET OUR MONUMENT USING GPS CONTROL AND A TOTAL STATION TRAVERSE. UTILIZING OUR COMPUTED AND SET CENTER QUARTER POSITION, WE THEN PROPERLY COMPUTED THE PROPORTIONED POSITIONS OF THE CENTER NORTH 1/16TH AND THE CENTER WEST 1/16TH. WE THEN UTILIZED THESE COMPUTED POSITIONS AND THE FOUND MONUMENTS AT THE WEST 1/16TH CORNER OF SECTIONS 15 AND 22 (CORNER 2) AND THE NORTH 1/16TH CORNER OF SECTIONS 21 AND 22 (CORNER 4) TO PROPERLY SUBDIVIDE THE NORTHWEST QUARTER OF SECTION 22 AND SET OUR MONUMENT AT THE NORTHWEST 1/16TH CORNER OF SECTION 22. RECOVERED EXISTING BLAZES AND OTHER EVIDENCE TO THE NORTH AND WEST OF THE NORTHWEST 1/16TH CORNER (CORNER 3), WERE NOT USED AS EVIDENCE OF THE CORNER, BUT MATCH VERY WELL WITH THE MONUMENT WE CALCULATED AND SET. WE ALSO PERFORMED A COMPUTATIONAL SUBDIVISION OF THE NORTHEAST QUARTER OF SECTION 22, IN ORDER TO SHOW TIES BETWEEN OUR FOUND AND COMPUTED CORNER POSITIONS.

PROPERTY LINES SHOWN HEREON AS MARKED WERE QUARTER BLAZED AND PAINTED WITH RED PAINT, RED PROPERTY LINE RIBBON AND FLORESCENT BLUE RIBBON WERE PLACED ON TRUE PROPERTY LINE AND ALUMINUM PROPERTY LINE TAGS WERE PLACED AT INTERVALS ALONG THE LINES. 5 1/2-FOOT-TALL STEEL GALVANIZED POSTS WERE PLACED ON TRUE LINE BETWEEN THE WYERHAEUSER, HTFF OR-T, AND JUNIPER PROPERTIES (CORNER 1 TO CORNER 2 AND CORNER 4 TO CORNER 5), BEARING TREES WERE SCRIBED AT ROOT CROWN WITH DISTANCES MEASURED TO AN ALUMINUM NAIL AT SIDE CENTER AND BEARINGS WERE COMPUTED BY TURNING HORIZONTAL ANGLES FROM TRAVERSE CONTROL POINTS TO AN ALUMINUM NAIL IN FACE CENTER. THIS SURVEY WAS CONDUCTED USING A TOPCON ES62 AND A TRIMBLE C5 TOTAL STATIONS. TRIMBLE R10 AND TRIMBLE R12I GNSS AND RTK RECEIVERS WERE ALSO EMPLOYED, UTILIZING A LOCAL BASE AND SITE CALIBRATED WITH TRIMBLE BUSINESS CENTER SOFTWARE TO TERRESTRIAL TOTAL STATION CONTROL. BRETT RAGON, IGNACIO ROMAN, AND TREVOR CLEMO ASSISTED ME DURING THIS SURVEY.

MAP FILE M184-12A

MAP OF SURVEY

THE NORTH HALF OF SECTION 22, TOWNSHIP 32 SOUTH RANGE 6
WEST WILLAMETTE MERIDIAN
DOUGLAS COUNTY, OREGON

SURVEY FOR: JUNIPER PROPERTIES, LLC
P.O. BOX 1127 ROSEBURG, OREGON 97470
SURVEY BY: LONE ROCK TIMBER MANAGEMENT, LLC
DATE: AUGUST 2024 TRACT: M3206W22

FILED	
DATE: 8-19-2024	BY: DS
THIS SURVEY CONSISTS OF:	
MAP: M184-12 A&B	
NARRATIVE:	
CORNER RPT:	
DOUGLAS COUNTY SURVEYOR	

CORNER INFORMATION:

- 1) QUARTER CORNER OF SECTIONS 15 AND 22, T32S R6W, (PLSS 440400)
FOUND 1966 BLM BRASS CAP AND IRON PIPE MARKED T32S R6W 1/4 S15 S22 AS PER VOLUME 34 PAGES 13987-13988 FILED IN THE DOUGLAS COUNTY SURVEYOR'S OFFICE.
-- FOUND INDETERMINATE SIZE YEW STUMP BEARS S0 1/2"E 14.3' (RECORD SOUTH 15.18' (23 LINKS)) WITH A BLM TAG, NO VISIBLE FACE.
-- FOUND 19" DOUGLAS-FIR BEARS S53 1/4"W 17.9' (RECORD S55"W 17.82' (27 LINKS)) WITH A BLM TAG AND HEALED FACE.
-- FOUND 20" DOUGLAS-FIR BEARS N0 1/2"W 43.9' (RECORD N0 3/4"W 44.22' (67LINKS)) WITH NO TAG AND NO VISIBLE FACE.
WE OPEN A NEW FACE, SCRIBE X 1/4 BT, AND TAG.
-- NEW 16" INCENSE CEDAR BEARS S1 1/4"E 23.0' WE SCRIBE T32S R6W S22 1/4 BT AND TAG.
-- NEW 20" DOUGLAS-FIR BEARS N51"W 56.4'. WE SCRIBE T32S R6W S15 1/4 BT AND TAG.
-- COULD NOT LOCATE STUMP HOLE AT RECORD (N18"W 45 LINKS)
CORNER MONUMENT LIES ON A GENTLE EAST FACING SLOPE IN MATURE TIMBER, APPROXIMATELY 150' WEST OF A DIRT SURFACE LOGGING ROAD. TOP OF MONUMENT IS 0.5' ABOVE GROUND LEVEL. WE PLACE A 5 1/2' TALL STEEL GALVANIZED U-POST 1.0' EAST, ON LINE.
- 2) WEST ONE SIXTEENTH CORNER OF SECTIONS 15 AND 22, T32S R6W (PLSS 420400)
FOUND 1966 BLM BRASS CAP AND IRON PIPE MARKED W 1/16 S15 S22 AS PER VOLUME 34 PAGE 13988 FILED IN THE DOUGLAS COUNTY SURVEYOR'S OFFICE.
-- FOUND 21" DOUGLAS-FIR BEARS S53 1/4"E 11.7' RECORD (S53"E 12.54' (19 LINKS)) WITH A HEALED FACE AND BLM TAG.
-- FOUND 31" DOUGLAS-FIR BEARS N10 1/2"E 29.5' RECORD (N11"E 29.7' (45 LINKS)) WITH A HEALED FACE AND BLM TAG. CORNER MONUMENT LIES ON MODERATE EAST FACING SLOPE IN MATURE TIMBER. TOP OF MONUMENT IS 0.6' ABOVE GROUND LEVEL. WE PLACE A 5 1/2' TALL STEEL GALVANIZED U-POST 1.0' NORTH.
- 3) NORTHWEST ONE SIXTEENTH CORNER OF SECTION 22, T32S R6W (PLSS 420360)
SET 5/8"x40" IRON ROD WITH 2 1/2" ALUMINUM CAP MARKED LONE ROCK TIMBER NW 1/16 S22 2024 85006PLS.
-- NEW 12" INCENSE CEDAR BEARS S5 1/4"W 32.4' WE SCRIBE NW 1/16 S22 BT AND TAG
-- NEW 10" DOUGLAS-FIR BEARS N27 1/4"E 34.6' WE SCRIBE NW 1/16 S22 BT AND TAG
CORNER MONUMENT LIES ON A STEEP SOUTH FACING SLOPE, APPROXIMATELY 20' NORTH OF A DRY CREEK BED RUNNING WEST-EAST AND APPROXIMATELY 100 FEET NORTH OF A RECENTLY CONSTRUCTED DIRT SURFACE LOGGING LANDING. TOP OF MONUMENT IS 0.4' ABOVE GROUND LEVEL. WE PLACE A 5 1/2' TALL STEEL GALVANIZED U-POST 1.0' FEET NORTH.
- 4) NORTH ONE SIXTEENTH CORNER OF SECTIONS 21 AND 22, T32S R6W (PLSS 400360)
FOUND 1976 BLM BRASS CAP AND IRON PIPE MARKED N 1/16 S21 S22 AS PER VOLUME 41 PAGE 16316 FILED IN THE DOUGLAS COUNTY SURVEYOR'S OFFICE.
-- FOUND 37" DOUGLAS-FIR BEARS S30 3/4"W 27.3' RECORD <S33"W 27.7"> WITH A HEALED FACE AND BLM TAG.
-- FOUND 20" DOUGLAS-FIR BEARS S54"E 28.1' RECORD <S52"E 27.7"> WITH A HEALED FACE AND BLM TAG. CORNER MONUMENT LIES ON STEEP EAST FACING SLOPE. A 1" IRON PIPE BEARS S39"W 1.2'. TOP OF MONUMENT IS 0.4' ABOVE GROUND LEVEL. WE PLACE A 5 1/2' TALL STEEL GALVANIZED U-POST 1.0' NORTH.
- 5) QUARTER CORNER OF SECTIONS 21 AND 22, T32S R6W (PLSS 400340)
FOUND 1976 BLM BRASS CAP AND IRON PIPE MARKED T32S R6W 1/4 S21 S22 AS PER VOLUME 41 PAGE 16315-16316 FILED IN THE DOUGLAS COUNTY SURVEYOR'S OFFICE.
-- FOUND 35" DOUGLAS-FIR BEARS N82 1/4"E 12.1' RECORD <N80"E 11.88"> WITH A HEALED FACE AND BLM TAG.
-- FOUND 27" DOUGLAS-FIR SNAG BEARS S77"W 9.5' RECORD <S80"E 9.9' <15 LINKS>> WITH A HEALED FACE AND BLM TAG.
-- FOUND 55" DOUGLAS-FIR BEARS N75 1/2"W 47.4' RECORD <N75"W 47.52' <72 LINKS>> WITH A HEALED FACE AND BLM TAG.
-- FOUND UN-RECORDED 28" DOUGLAS-FIR BEARS N51 1/2"E 9.4' TAG READS S50"W 9.8' WITH A BLM TAG. NO VISIBLE FACE OR SCAR.
-- NEW 10" DOUGLAS-FIR BEARS S14 3/4"W 20.5' WE SCRIBE T32S R6W S21 BT AND TAG.
-- COULD NOT LOCATE FIR STUMP AT RECORD <N35"E 43 LINKS>.
CORNER MONUMENT LIES ON A SOUTH-EAST FACING SLOPE IN MIXED AGE TIMBER STAND. A 1" IRON PIPE BEARS S82"W 0.6'. TOP OF MONUMENT IS 0.2' ABOVE GROUND LEVEL. AN ALUMINUM POST WITH A BLM LINE TAG LIES WEST 1.3'.
- 6) CENTER QUARTER CORNER OF SECTIONS 22, T32S R6W (PLSS 440340)
SET 5/8"x40" IRON ROD WITH 2 1/2" ALUMINUM CAP MARKED LONE ROCK TIMBER T32S R6W C 1/4 S22 2024 85006PLS.
-- SET 5/8"x40" IRON ROD REFERENCE, 0.4' ABOVE GROUND, WITH ORANGE PLASTIC CAP MARKED LONE ROCK TIMBER 85006PLS BEARS N15°37'44"E 21.79' WE PLACE A 5 1/2' STEEL GALVANIZED U-POST BESIDE AND WIRE TAG TO POST.
-- SET 5/8"x40" IRON ROD REFERENCE, 0.4' ABOVE GROUND, WITH ORANGE PLASTIC CAP MARKED LONE ROCK TIMBER 85006PLS BEARS N52°05'27"W 25.71' WE PLACE A 5 1/2' STEEL GALVANIZED U-POST BESIDE AND WIRE TAG TO POST.
-- SET 5/8"x40" IRON ROD REFERENCE, 0.7' ABOVE GROUND, WITH ORANGE PLASTIC CAP MARKED LONE ROCK TIMBER 85006PLS BEARS S71°55'52"W 24.93' WE PLACE A 5 1/2' STEEL GALVANIZED U-POST BESIDE AND WIRE TAG TO POST.
-- SET 5/8"x40" IRON ROD REFERENCE, 0.5' ABOVE GROUND, WITH ORANGE PLASTIC CAP MARKED LONE ROCK TIMBER 85006PLS BEARS S11°39'09"E 18.19' WE PLACE A 5 1/2' STEEL GALVANIZED U-POST BESIDE AND WIRE TAG TO POST.
-- NO SUITABLE TREES IN THE VICINITY OF THIS CORNER.
CORNER MONUMENT LIES ON GENTLE EAST FACING SLOPE APPROXIMATELY 120 FEET SOUTHEAST OF A DIRT SURFACE LOGGING ROAD. TOP OF MONUMENT IS 0.6' ABOVE GROUND LEVEL. WE PLACE A 5 1/2' TALL STEEL GALVANIZED U-POST 1.0' NORTH.

- 7) QUARTER CORNER OF SECTIONS 22 AND 27, T32S R6W (PLSS 440300)
FOUND 1976 BLM BRASS CAP AND IRON PIPE MARKED T32S R6W 1/4 S22 S27 AS PER VOLUME 41 PAGE 16314
-- FOUND 22" INCENSE CEDAR BEARS N3 1/2"E 18.6' RECORD <N4"E 18.48' <28 LINKS>> WITH A HEALED FACE AND BLM TAG.
-- NEW 6"x6"x5' TALL FENCE CORNER POST BEARS N65 1/4"E 0.9' TO TOP CENTER. WE TAG.
-- NEW 10" DOUGLAS-FIR BEARS N19 1/4"W 49.5' WE SCRIBE 1/4 S22 BT AND TAG.
-- NEW 10" DOUGLAS-FIR BEARS N77"W 12.5' WE SCRIBE X BT AND TAG.
-- COULD NOT LOCATE WHITE OAK AT RECORD <S38 1/2"E 69.63' <105 1/2 LINKS>>.
-- NO SUITABLE TREES WITHIN A REASONABLE DISTANCE IN SECTION 27.
CORNER MONUMENT LIES ON NORTH SIDE OF FENCE LINE RUNNING WEST AND NORTHEAST FROM THE CORNER, APPROXIMATELY 250' SOUTH OF A DIRT SURFACE LOGGING ROAD. TOP OF MONUMENT IS 0.3' ABOVE GROUND LEVEL.
- 8) QUARTER CORNER OF SECTIONS 22 AND 23, T32S R6W (PLSS 500340)
FOUND 2007 BLM BRASS CAP AND STEEL PIPE MARKED T32S R6W 1/4 S22 S23 AS PER VOLUME 55 PAGE 21481-21482 FILED IN THE DOUGLAS COUNTY SURVEYOR'S OFFICE.
-- FOUND 12" X 4" TALL DOUGLAS-FIR STUMP AT RECORD [N49"E 26.8'] WITH A HEALED FACE. TAG IS MISSING.
-- FOUND 18" X 4" TALL PACIFIC MADRONE STUMP AT RECORD [S76 1/4"E 9.0'] WITH A HEALED SCRIBE AND LONE ROCK TIMBER TAG.
-- FOUND 18" DOUGLAS-FIR AT RECORD [S51"W 17.1'] WITH A HEALED FACE AND LONE ROCK TIMBER TAG.
-- FOUND 20" DOUGLAS-FIR AT RECORD [N41 3/4"W 17.1'] WITH A HEALED FACE AND LONE ROCK TIMBER TAG.
CORNER MONUMENT LIES ON THE EAST EDGE OF A RIDGETOP WITH THE RIDGE RUNNING SOUTH, IN A MOUND OF STONES, APPROXIMATELY 50' SOUTH OF A DECOMMISSIONED DIRT SURFACE LOGGING LANDING. TOP OF MONUMENT IS 0.1' ABOVE THE MOUND OF STONES.
- 9) NORTH ONE SIXTEENTH CORNER OF SECTIONS 22 AND 23, T32S R6W (PLSS 500360)
FOUND 1" IRON ROD AS PER SURVEY M69-3 FILED IN THE DOUGLAS COUNTY SURVEYOR'S OFFICE.
-- FOUND 34" DOUGLAS-FIR AT RECORD **N88"E 40.67' ** WITH A HEALED FACE. WE RE-TAG.
-- FOUND ANGLE IRON BENT OVER NEAR THE BASE. MEASUREMENT TO BASE IS CONSISTENT WITH RECORD **N49"W 6.33' **.
-- FOUND UNRECORDED 16" DOUGLAS-FIR BEARS S45"E 6.4' WITH A HEALED FACE. WE TAG.
-- COULD NOT LOCATE BLACK OAK AT RECORD **N77"W 11.84' **.
CORNER MONUMENT LIES ON WEST FACING SLOPE AT THE EAST EDGE OF A YOUNG REPRODUCTION TIMBER STAND, APPROXIMATELY 40' EAST OF A DIRT SURFACE LOGGING ROAD. TOP OF MONUMENT IS 0.3' ABOVE GROUND LEVEL.
- 10) EAST ONE SIXTEENTH CORNER OF SECTIONS 15 AND 22, T32S R6W (PLSS 460400)
FOUND 1966 BLM BRASS CAP AND IRON PIPE MARKED E1/16 S15 S22 AS PER VOLUME 34 PAGES 13987 FILED IN THE DOUGLAS COUNTY SURVEYOR'S OFFICE.
-- FOUND 41" DOUGLAS-FIR AT RECORD (N13"E 11.88'(18 LINKS)) WITH A HEALED FACE AND BLM TAG.
-- FOUND 21" X 4" TALL GOLDEN CHINQUAPIN STUMP AT RECORD (S45"W 13.86'(21 LINKS)) WITH A WELL HEALED FACE. TAG IS MISSING.
CORNER MONUMENT LIES ON STEEP NORTHWEST FACING SLOPE ON NORTH EDGE OF YOUNG REPRODUCTION TIMBER STAND. TOP OF MONUMENT IS 0.4' ABOVE GROUND LEVEL.

REGISTERED
PROFESSIONAL
LAND SURVEYOR

Daniel E. Saily

OREGON
NOVEMBER 10, 2020
DANIEL E. SAILY
85006
EXPIRES: 6/30/2026