

MAP OF SURVEY

SURVEY FOR: LONE ROCK TIMBERLAND LLC
 P.O. BOX 1127 ROSEBURG, OREGON 97470
 SURVEY BY: LONE ROCK TIMBER MANAGEMENT LLC
 P.O. BOX 1127 ROSEBURG, OREGON 97470

THE NORTH HALF OF SECTION 26, TOWNSHIP 26 SOUTH, RANGE 8 WEST
 WILLAMETTE MERIDIAN, DOUGLAS COUNTY, OREGON

TRACT: CALLAHAN COMPLEX

DATE: JULY 2024

CORNER INFORMATION:

1) THE CORNER OF SECTIONS 22, 23, 26 AND 27, T26S R8W. (PLSS 500300)
 FOUND 1" CAR JACK SHAFT AS PER 1955 JOHNSON SURVEY CS42/195
 -- FOUND 23"x 5" TALL DOUGLAS-FIR STUMP AT **RECORD S59°E 15.5' ** AS PER CS65/110-008.
 -- FOUND 14"x 5" TALL DOUGLAS-FIR STUMP AT **RECORD S50 1/4°E 14.2' ** AS PER CS65/110-008.
 -- FOUND 10" X 6.5" TALL DOUGLAS-FIR STUMP AT **RECORD N53 3/4°E 12.9' ** AS PER CS65/110-008
 -- FOUND 15"x 6" TALL DOUGLAS-FIR STUMP AT **RECORD N43°E 11.5' ** AS PER CS65/110-008
 -- FOUND 25"x 4" TALL DOUGLAS-FIR STUMP AT **RECORD N38 1/4°W 14.6' ** AS PER CS65/110-008
 -- FOUND 22"x 4" TALL DOUGLAS-FIR STUMP AT **RECORD S66°W 29.7' ** AS PER CS65/110-008
 -- FOUND 11"x 7" TALL DOUGLAS-FIR STUMP AT **RECORD S55°W 35.2' ** AS PER CS65/110-008
 -- FOUND 11" DOUGLAS-FIR AT **RECORD N17°W 30.8' ** AS PER CS65/110-008
 CORNER LIES ON FLAT GROUND APPROXIMATELY 20 FEET NORTHWEST OF THE GRAVEL SURFACE LOGGING ROAD JUNCTION WITH ROADS EXTENDING NORTH WEST AND EAST FROM JUNCTION. TOP OF JACK IS 0.2 FEET ABOVE GROUND LEVEL. WE PLACE A 5 1/2" TALL STEEL GALVANIZED U-POST 1.0 FEET NORTH.

2) THE WEST 1/16TH CORNER OF SECTIONS 23 AND 26 (PLSS 520300)
 FOUND 3/4" IRON PIPE AS PER 1975 ADAMEK SURVEY M57-74
 -- FOUND 32"x 3" TALL DOUGLAS-FIR STUMP AT RECORD N9°W. WE MEASURE 26.3' TO FACE AND 27.5' TO SIDE CENTER. (RECORD N9°W 26.9'). HEALED FACE AND NO TAG.
 -- FOUND 38" DOUGLAS-FIR AT RECORD N24°E. WE MEASURE 1.7' TO FACE AND 3.4' TO SIDE CENTER. (RECORD N24°E 2.2'). HEALED FACE, WE TAG.
 -- FOUND 15" DOUGLAS-FIR AT RECORD S5°31'E. WE MEASURE 17.0' TO SIDE CENTER. <RECORD S5°31' E 17.07>. HEALED FACE AND LRT TAG.
 CORNER LIES ON STEEP EAST FACING SLOPE AT SOUTHEAST CORNER OF 15 YEAR OLD REPRODUCTION TIMBER STAND. TOP OF PIPE IS 0.4 FEET ABOVE GROUND LEVEL.

3) THE QUARTER CORNER OF SECTIONS 23 AND 26 (PLSS 540300)
 SET 5/8"x 60" IRON ROD WITH 2 1/2" ALUMINUM CAP MARKED LONE ROCK TIMBER T26S R8W 1/4 S23 S26 2024 85006PLS.
 -- FOUND 36"x 1" TALL ROTTEN, PARTIALLY BURIED, DOUGLAS-FIR STUMP BEARS N31°E 12.5' TO THE APPROXIMATE CENTER AND N31°E 10.0' TO COMPUTED "W" NAIL IN FACE AS PER CS65/20-002. ROTTEN FACE AND NO TAG.
 -- FOUND 10" PACIFIC YEW SNAG BEARS S15 1/4°E 106.7' TO CENTER AND S15 1/4°E 105.9' TO FOUND SPIKE IN FACE. //RECORD COMPUTATION AS PER CS65/20-002 S16°30'E 103.1' TO SPIKE IN FACE. PARTIALLY HEALED SCRIBE. WE TAG.
 -- FOUND 51" WESTERN RED CEDAR BEARS N70°E 81.5' TO CENTER AND N70°E 78.9' TO FOUND SPIKE IN FACE. //RECORD COMPUTATION AS PER CS65/20-002 N67°E 79.0' TO SPIKE IN FACE. PARTIALLY HEALED SCRIBE. WE TAG.
 -- FOUND 23"x 3" TALL ROTTEN DOUGLAS-FIR STUMP BEARS S12 1/4°W 80.0' TO CENTER AND S12 1/4°W 78.9' TO "W" NAIL LYING ON AN AXE MARK AT THE BOTTOM OF A ROTTEN FACE //RECORD COMPUTATION AS PER CS65-20/002 S7°W 81.9' TO "W" NAIL IN FACE. ROTTEN FACE, NO TAG. "W" NAIL WAS FOUND LYING ON TOP OF AN AXE MARK AT WHAT APPEARS TO BE THE BOTTOM OF A CHOPPED FACE.
 -- SET 5/8"x 40" IRON ROD WITH ORANGE PLASTIC CAP MARKED LONE ROCK TIMBER 85006PLS BEARS S88°37'21"W 63.52'. WE PLACE A 5 1/2" TALL STEEL GALVANIZED U-POST 1.0' NORTH.
 -- SET 5/8"x 40" IRON ROD WITH ORANGE PLASTIC CAP MARKED LONE ROCK TIMBER 85006PLS BEARS S0°48'28"E 113.36'. WE PLACE A 5 1/2" TALL STEEL GALVANIZED U-POST 1.0' SOUTH.
 CORNER LIES IN THE FILL SLOPE OF AN LIGHTLY GRAVELED LOGGING ROAD 9' EAST OF CENTERLINE AND 25' NORTH OF CREEK BEARING NORTHEASTERLY. THE CORNER IS NEAR A LARGE, FAILING CULVERT IN THE LOGGING ROAD. THE FILL SLOPE OF THE LOGGING ROAD HAS ALSO BEEN FAILING OVER THE PAST SEVERAL YEARS. THE TOP OF THE ALUMINUM CAP IS 0.25' ABOVE GROUND LEVEL. WE PLACE A 5 1/2" TALL STEEL GALVANIZED U-POST 1.0' NORTH.

4) THE CORNER OF SECTIONS 23, 24, 25 AND 26 T26S R8W (PLSS 600300)
 FOUND 1971 BLM BRASS CAP ON IRON PIPE MARKED T26S R8W S23 S24 S25 S26 1971 AS PER VOLUME 37 PAGE 15209-15210.
 -- FOUND 17"x 6" TALL CEDAR STUMP BEARS S72 1/2°W 70.7' ++RECORD S72°W 71.3' / 108 LINKS++ ROTTEN FACE AND BLM TAG.
 -- FOUND 27" DOUGLAS-FIR BEARS N68 3/4°E 9.6' ++RECORD N68°E 9.2' / 14 LINKS++ HEALED FACE AND BLM TAG.
 -- FOUND 21" DOUGLAS-FIR BEARS S41°E 17.7' ++RECORD S40°E 17.8' / 27 LINKS++ HEALED FACE AND BLM TAG.
 -- NEW 21" DOUGLAS-FIR BEARS N50 3/4°W 20.5'. WE SCRIBE T26S R8W S23 BT AND TAG.
 -- NEW 13" DOUGLAS-FIR BEAR S80 1/4°W 27.4'. WE SCRIBE T26S R8W S26 BT AND TAG.
 -- FOUND ROTTEN REMAINS OF STUMPS AT N49°W AND N14°W BUT WE DID NOT TIE.
 CORNER LIES ON FLAT GROUND APPROXIMATELY 60' WEST OF ROCK CLIFF FACE IN OPEN MATURE TIMBER STAND. TOP OF BRASS CAP IS 0.6' ABOVE GROUND LEVEL. WE PLACE A 5 1/2" TALL STEEL GALVANIZED U-POST 1.0' NORTH.

NARRATIVE:

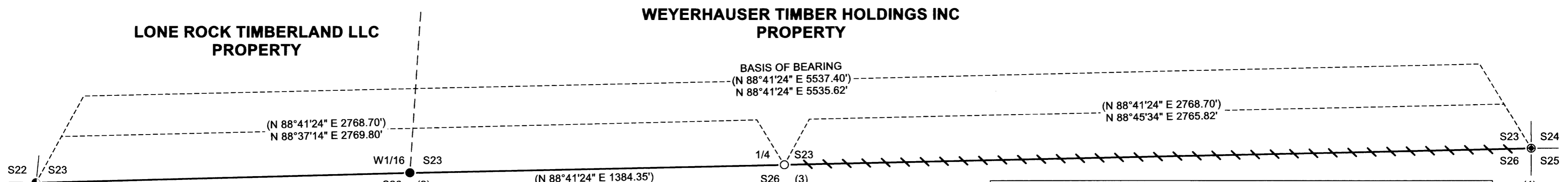
THE PURPOSE OF THIS SURVEY IS TO RE-ESTABLISH THE QUARTER CORNER OF SECTION 23 AND 26 AND MARK PROPERTY LINES FOR THE LONE ROCK TIMBERLAND LLC. PROPERTY IN THE SOUTHWEST QUARTER OF THE SOUTHWEST QUARTER OF SECTION 23 AND SECTION 26 OF TOWNSHIP 26 SOUTH RANGE 8 WEST W.M., FOR TIMBER MANAGEMENT PURPOSES. WE BEGAN THIS SURVEY BY SEARCHING FOR ALL KNOWN MONUMENTS; (CORNERS 1-4). WE MADE A DILIGENT SEARCH BUT FOUND NO EVIDENCE OF THE IRON PIPE CORNER MONUMENT SET BY ADAMEK IN SURVEY M57-74, AT THE QUARTER CORNER OF SECTIONS 23 AND 26. HOSTETTER, IN 1995 CORNER RENEWAL CS65/20-002, ALSO NOTES HE COULD NOT FIND ADAMEK'S IRON PIPE AND MADE 2 BEARING TREES TO REFERENCE THE ONE REMAINING BEARING TREE FROM ADAMEK'S SURVEY. DUE TO THE LOCATION OF THE QUARTER CORNER OF SECTIONS 23 AND 26, WE BELIEVE THAT ADAMEK'S MONUMENT AT THE QUARTER CORNER OF SECTIONS 23 AND 26 WAS DESTROYED BY FOR ROAD CONSTRUCTION ACTIVITIES, OR THE SUBSEQUENT FAILURE OF ROAD FILL SLOPES AT SOME TIME BEFORE HOSTETTER VISITED THE SITE IN 1995.

WE BEGAN OUR SURVEY OF THE COMMON SECTION LINE OF SECTIONS 23 AND 26 AT THE CORNER OF SECTIONS 22, 23, 26 AND 27 (CORNER 1) AND RAN A RANDOM TRAVERSE TO THE CORNER OF SECTIONS 23, 24, 25 AND 26 (CORNER 4) AND CLOSED IT WITH GPS. WE ALSO TIED THE WEST 1/16TH OF SECTION 23 AND 26 (CORNER 2) WITH GPS OBSERVATIONS. WE THEN RAN A RANDOM TRAVERSE ALONG THE SECTION LINE FROM THE CORNER OF SECTIONS 23, 24, 25 AND 26 (CORNER 4) THROUGH THE APPROXIMATE LOCATION OF THE QUARTER CORNER OF SECTIONS 23 AND 26 AND CLOSED IT WITH GPS. WE THEN ROTATED OUR SURVEY BETWEEN SECTION CORNERS (CORNER 1 AND 4) TO ADAMEK'S BASIS OF BEARING. USING OUR TRAVERSE CONTROL ESTABLISHED AT THE APPROXIMATE LOCATION OF THE QUARTER CORNER OF SECTIONS 23 AND 26, WE RECOVERED AND TIED HOSTETTER'S EXISTING REFERENCES, 6 INCH SPIKES IN THE FACE OF A YEW AND A CEDAR, TO THE "W" NAIL IN THE FACE OF ADAMEK'S ONE REMAINING BEARING TREE. WE ALSO RECOVERED ADAMEK'S ONE REMAINING BEARING TREE, A PARTIALLY BURIED STUMP, IN POOR CONDITION, WITHOUT THE "W" NAIL OR OTHER EVIDENCE OF MARKS ON THE FACE. WE INTERSECTED HOSTETTER'S RECORD MEASUREMENTS FROM THE TWO SPIKES HE SET IN CS65/20-002 TO COMPUTE THE RECORD POSITION OF THE "W" NAIL HE FOUND IN THE FACE OF ADAMEK'S REMAINING BEARING TREE. WE THEN USED ADAMEK'S RECORD BEARING AND DISTANCE FROM THE COMPUTED "W" NAIL POSITION TO RE-ESTABLISH THE QUARTER CORNER OF SECTIONS 23 AND 26 (CORNER 3). WE FOUND THIS POSITION OF THE QUARTER CORNER TO MATCH BETTER WITH THE EXISTING STUMP WE FOUND, THAN RE-PROPORTIONING THE CORNER OR USING HOSTETTER'S COMPUTATIONAL POSITION FROM CS65/20-002, FOR THE CORNER. WE RECOVERED EXISTING BLAZES AND TAGS TO THE EAST OF THE RE-ESTABLISHED QUARTER CORNER (CORNER 3) ALONG THE SECTION LINE THAT ALSO MATCH WELL WITH THE POSITION OF THE MONUMENT WE CALCULATED AND SET.

PROPERTY LINES SHOWN HEREON AS MARKED WERE QUARTER BLAZED AND PAINTED WITH RED PAINT, RED PROPERTY LINE RIBBON AND FLORESCENT BLUE RIBBON WERE PLACED ON TRUE PROPERTY LINE AND ALUMINUM PROPERTY LINE TAGS WERE PLACED AT INTERVALS ALONG THE LINES. 5 1/2-FOOT-TALL STEEL GALVANIZED POST WERE PLACED ON TRUE LINE BETWEEN THE WEYERHAEUSER AND LONE ROCK PROPERTIES (CORNER 3 TO CORNER 4). BEARING TREES WERE SCRIBED AT ROOT CROWN WITH DISTANCES MEASURED TO AN ALUMINUM NAIL AT SIDE CENTER AND BEARINGS WERE COMPUTED BY TURNING HORIZONTAL ANGLES FROM TRAVERSE CONTROL POINTS TO AN ALUMINUM NAIL IN FACE CENTER. THIS SURVEY WAS CONDUCTED USING TRIMBLE C5 TOTAL STATION. TRIMBLE R10 AND TRIMBLE R12I GNSS AND RTK RECEIVERS WERE ALSO EMPLOYED, UTILIZING A LOCAL BASE AND SITE CALIBRATED WITH TRIMBLE BUSINESS CENTER SOFTWARE TO TERRESTRIAL TOTAL STATION CONTROL. BRETT RAGON, IGNACIO ROMAN, AND TREVOR CLEMO ASSISTED ME DURING THIS SURVEY.

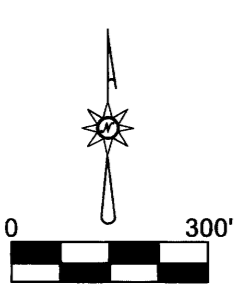
FILED
 DATE: 1-3-2024 BY: [Signature]
 THIS SURVEY CONSISTS OF:
 MAP: M183-17
 NARRATIVE:
 CORNER RPT:
 DOUGLAS COUNTY SURVEYOR

MAP FILE M183-17



LEGEND

- FOUND 1" CAR JACK SHAFT AS PER 1955 JOHNSON SURVEY CS42/195 FILED IN THE DOUGLAS COUNTY SURVEYOR'S OFFICE
- ⊙ FOUND BLM BRASS CAP AND IRON PIPE AS PER VOLUME 37 PAGE 15209-15210 FILED IN THE DOUGLAS COUNTY SURVEYOR'S OFFICE
- FOUND 3/4" IRON PIPE AS PER 1975 ADAMEK SURVEY M57-74 FILED IN THE DOUGLAS COUNTY SURVEYOR'S OFFICE
- SET 5/8" X 60" IRON ROD WITH 2 1/2" ALUMINUM CAP MARKED LONE ROCK TIMBER T26S R8W 1/4 S23 S26 2024 85006PLS
- ▬ LINES SURVEYED AND MARKED BY BLAZING, PAINTING, RIBBONING, POSTING AND TAGGING
- ▬ LINES SURVEYED
- - - - - APPROXIMATE TAXLOT LINES
- () RECORD AS PER 1975 ADAMEK SURVEY M57-74 FILED IN THE DOUGLAS COUNTY SURVEYOR'S OFFICE
- < > RECORD AS PER 2007 HOFFINE CORNER RENEWAL CS65/52-22 FILED IN THE DOUGLAS COUNTY SURVEYOR'S OFFICE
- // \\ RECORD AS PER 1997 HOSTETTER RENEWAL CS65/20-002 FILED IN THE DOUGLAS COUNTY SURVEYOR'S OFFICE
- ** ** RECORD AS PER 2022 SAILY SURVEY CS65/110-008 FILED IN THE DOUGLAS COUNTY SURVEYOR'S OFFICE
- ++ ++ RECORD AS PER BLM LINE NOTES VOLUME 37 PAGE 15209-15210 FILED IN THE DOUGLAS COUNTY SURVEYOR'S OFFICE



REGISTERED PROFESSIONAL LAND SURVEYOR
Daniel E. Saily
 OREGON
 NOVEMBER 10, 2020
 DANIEL E. SAILY
 85006
 EXPIRES: 6/30/2026

BASIS OF BEARING FROM M57-74 WHICH IS BASED ON A SOLAR OBSERVATION

MAP FILE M183-17