

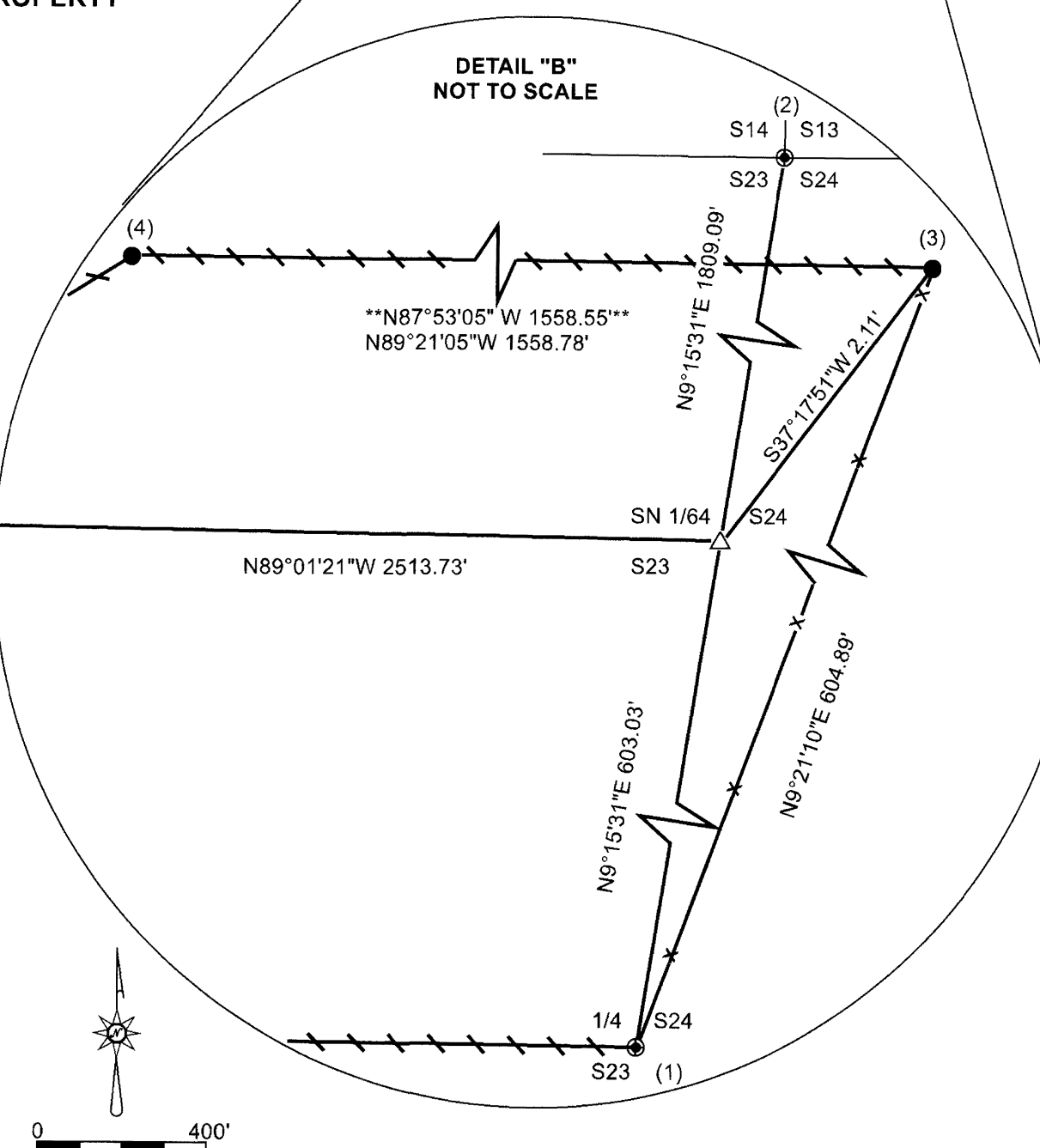
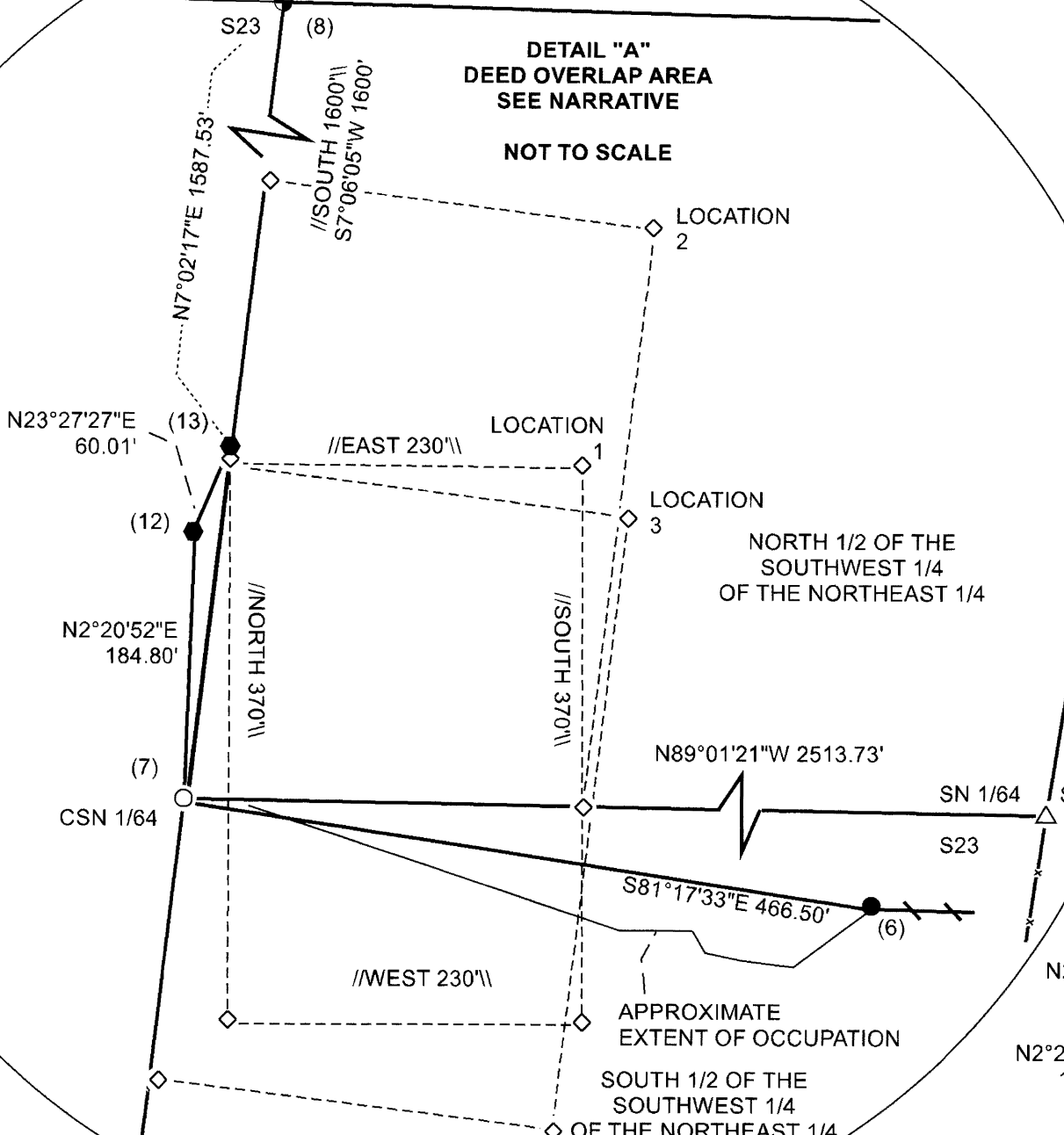
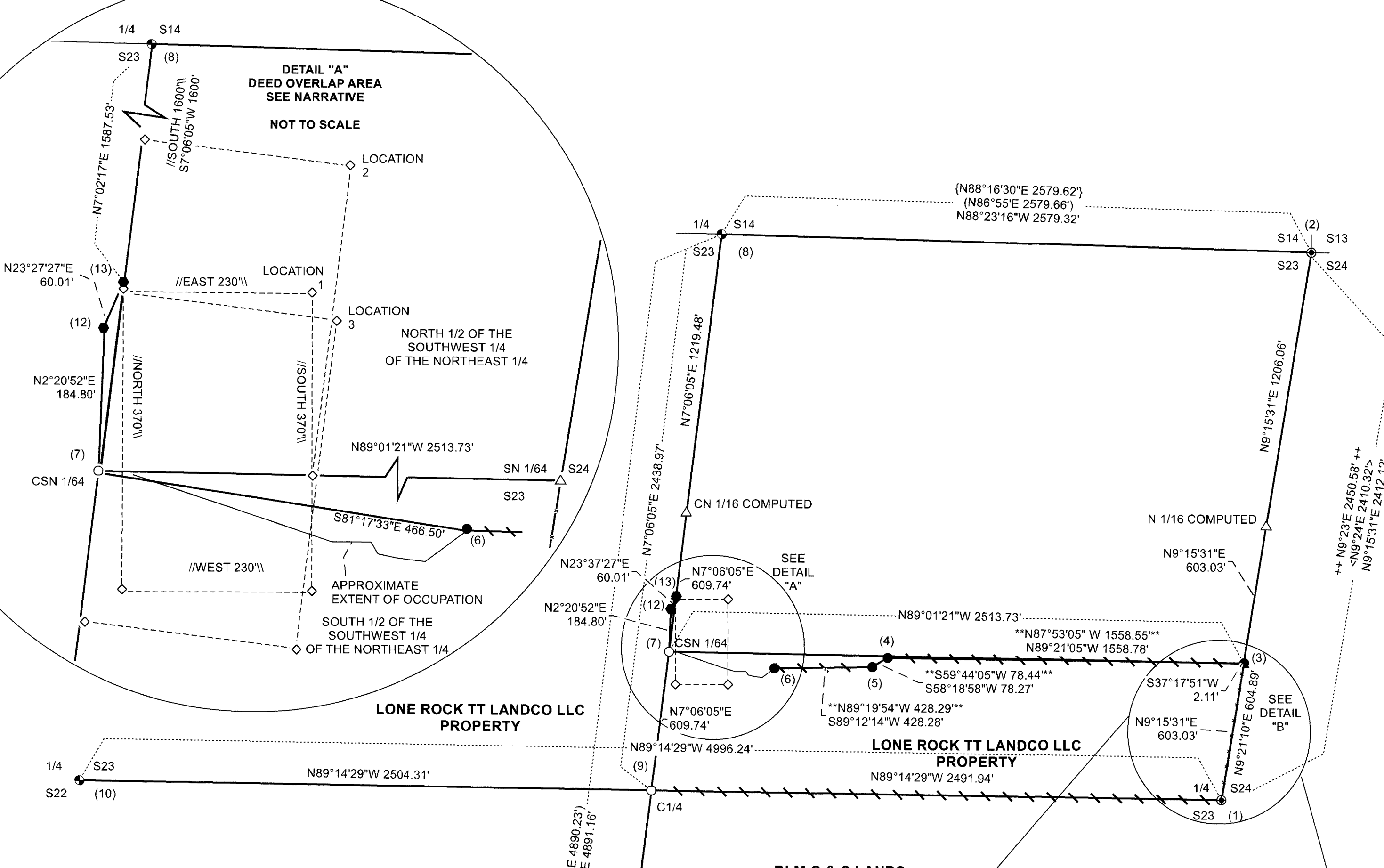
MAP OF SURVEY

SURVEY FOR: LONE ROCK TT LANDCO, LLC
P.O. BOX 1127 ROSEBURG, OR 97470
SURVEY BY: LONE ROCK TIMBER MANAGEMENT CO.
P.O. BOX 1127 ROSEBURG, OR 97470
SECTION 23, TOWNSHIP 29 SOUTH RANGE 4 WEST W.M.
DOUGLAS COUNTY, OREGON
TRACT: BMH7219/GUIDO DATE: DECEMBER 2023

NARRATIVE

THE PURPOSE OF THIS SURVEY IS TO SET THE CENTER 1/4 AND THE CENTER SOUTH NORTH 1/64 OF SECTION OF SECTION 23, TOWNSHIP 29 SOUTH RANGE 4 WEST AND MARK PROPERTY LINES FOR TIMBER MANAGEMENT ACTIVITIES. WE BEGAN THIS SURVEY BY TAKING DIRECT GPS AND RTK OBSERVATIONS ON THE EAST 1/4 CORNER (CORNER 1), THE NORTHEAST SECTION CORNER (CORNER 2), THE NORTH 1/4 CORNER (CORNER 8), THE WEST 1/4 CORNER (CORNER 9) AND ON AND NEAR THE SOUTH 1/4 CORNER (CORNER 10) OF SECTION 23. ALL GPS OBSERVATIONS WERE POST PROCESSED USING A LOCAL BASE WITH AN NGS OPUS SOLUTION. ALL RTK OBSERVATIONS WERE TAKEN SIMULTANEOUSLY WITH THE GPS OBSERVATIONS UTILIZING THE SAME LOCAL BASE. WE INITIATED OUR TRAVERSE AT THE EAST 1/4 CORNER OF SECTION 23 (CORNER 1) AND RAN A RANDOM TRAVERSE WEST AND NORTH TO GPS AND RTK CONTROL NEAR THE CENTER SOUTH NORTH 1/64 (CORNER 7). WE ALSO RAN A RANDOM TRAVERSE NORTH AND WEST FROM THE EAST 1/4 CORNER OF SECTION 23 (CORNER 1) THROUGH FOUND CORNERS (3), (4), (5) AND (6) TO GPS AND RTK CONTROL NEAR THE CENTER NORTH SOUTH 1/164 (CORNER 7). WE FOUND CORNERS (3), (4), (5) AND (6) IN GOOD CONDITION AND AS PER PARTITION PLAT 1994-0080. WE ALSO RAN A RANDOM CLOSED LOOP TRAVERSE FROM GPS AND RTK CONTROL ON A RIDGE NEAR THE SOUTH 1/4 CORNER THROUGH THE SOUTH 1/4 CORNER AND CLOSED BACK ON OUR GPS AND RTK CONTROL TO VERIFY OUR GPS AND RTK POSITION ON THE SOUTH 1/4 CORNER. WE RAN AN ADDITIONAL TRAVERSE NORTH FROM GPS AND RTK CONTROL NEAR THE CENTER SOUTH NORTH 1/64 THROUGH COUNTY RIGHT OF WAY MONUMENTS (CORNERS 11 AND 12) TO THE NORTH 1/4 CORNER (CORNER 8) TO CHECK OUR GPS AND RTK POSITIONS ON THESE MONUMENTS. WE ALSO OBSERVED SEVERAL CONTROL POINTS ON OUR RANDOM TRAVERSES AS AN ADDITIONAL CHECK. ALL GPS, RTK AND TRAVERSE OBSERVATIONS CHECKED WITH EACH OTHER VERY WELL. THE NORTH LINE OF THE LONE ROCK PROPERTY FROM FOUND CORNERS 3 TO 6 WAS PREVIOUSLY AGREED TO BY LONE ROCK AND WESTRUP IN PROPERTY LINE AGREEMENT DOCUMENTS 94-19744 AND 94-19745 AND SHOWN ON PARTITION PLAT 1994-0080. HOWEVER, FOUND CORNER 3 WAS ONLY INTENDED TO "DETERMINE THE DIRECTION, AND NOT THE END, FOR THE EAST-WEST PROPERTY LINE BETWEEN WESTRUP AND LONE ROCK TIMBER CO.", AS NOTED ON PARTITION PLAT 1994-0080. THEREFORE WE FELT IT IMPORTANT TO NOTE THAT FOUND CORNER 3 BEARS N37°17'51"E 2.11 FEET FROM OUR CALCULATED POSITION OF THE SOUTH NORTH 1/64 CORNER BETWEEN SECTION 23 AND 24 (SEE DETAIL "B"). HOWEVER, GIVEN THAT CORNER 3 IS VERY CLOSE TO THE PROPER POSITION OF THE SOUTH NORTH 1/64, AND THAT IT LIES WITHIN AN EXISTING, LONG STANDING FENCE LINE, WE FEEL THAT IT WOULD NOT BE UNREASONABLE TO UTILIZE THIS FOUND CORNER AS THE SOUTH NORTH 1/64. LONE ROCK PLANS TO DISCUSS THIS WITH THEIR NEIGHBORS TO THE EAST. DURING OUR RESEARCH FOR THIS SURVEY, WE DISCOVERED A POTENTIAL LARGE DEED OVERLAP (SEE DETAIL "A") NEAR THE CENTER SOUTH NORTH 1/64 CORNER. BOTH LONE ROCK'S AND THE NEIGHBOR'S DEEDS CALL TO THE 1/64 LINE BETWEEN THE NORTH 1/2 AND THE SOUTH 1/2 OF THE SOUTHWEST 1/4 OF THE NORTHEAST 1/4. HOWEVER, THE DISTANCES AND DIRECTION OF THE METES AND BOUNDS DESCRIPTION OF THE PARCEL DESCRIBED IN DEED 1983-9961 POTENTIALLY EXTEND SOUTHERLY PAST THE 1/64 LINE. OCCUPATION AND IMPROVEMENTS HAVE ALSO BEEN MADE SOUTH OF THE 1/64 LINE BY THE NEIGHBOR. WE HAVE DEPICTED, IN DETAIL "A", THREE POSSIBLE LOCATIONS FOR THE PARCEL DESCRIBED IN 1983-9961. LONE ROCK PLANS TO ENTER NEGOTIATIONS WITH THE NEIGHBOR IN THE NEAR FUTURE TO RESOLVE THIS MATTER. THEREFORE, WE DID NOT MARK DEED PROPERTY LINES ALONG THIS PORTION OF THE SURVEY. LINES SHOWN AS MARKED HEREON, WERE 1/4 BLAZED AND PAINTED WITH RED PAINT, FLAGGED WITH RED "PROPERTY LINE" AND BLUE RIBBON, TAGGED WITH LONE ROCK TIMBER ALUMINUM TAGS AND 5 1/2 FT TALL STEEL GALVANIZED POSTS WERE PLACED ON LINE BETWEEN THE LONE ROCK AND WESTRUP PROPERTIES. BEARING TREE DISTANCES WERE MEASURED TO AN ALUMINUM NAIL AT THE SIDE CENTER, AND BEARINGS WERE COMPUTED FROM HORIZONTAL ANGLES MEASURED FROM TRAVERSE CONTROL POINTS TO AN ALUMINUM NAIL IN THE CENTER FACE OF THE TREE (EXCEPT AS NOTED). BEARING TREES WERE SCRIBED AT THE ROOT CROWN AND THE FACES WERE PAINTED WITH RED PAINT. THIS SURVEY WAS CONDUCTED USING A TRIMBLE C5 TOTAL STATION AND TRIMBLE R10 AND R12I GPS AND RTK RECEIVERS UTILIZING RTK AND STATIC OBSERVATIONS FROM A LOCAL BASE CORRECTED TO AN NGS OPUS SOLUTION, WITH BRETT RAGON, WESTON ADDINGTON AND IGNACIO ROMAN ASSISTING ME.

FILED
DATE: 1-16-2024 BY: [Signature]
THIS SURVEY CONSISTS OF:
MAP: M183-28 A & B
NARRATIVE:
CORNER RPT:
DOUGLAS COUNTY SURVEYOR



SEE PAGE 2 FOR CORNER INFORMATION

LEGEND table with symbols and descriptions:
- Triangle: COMPUTED CORNER NO MONUMENT SET
- Diamond: COMPUTED POSSIBLE DEED RECORD POINTS PER 1983-9961
- Circle: SET 5/8" X 40" IRON ROD WITH ALUMINUM CAP AS NOTED
- Solid circle: FOUND 5/8" IRON ROD AS PER RUPPERT PARTITION PLAT 1994-0080 AS NOTED
- Circle with dot: FOUND BLM BRASS CAP AS NOTED
- Circle with cross: FOUND DOUGLAS COUNTY BRASS CAP AS NOTED
- ++ ++: RECORD PER GERMOND SURVEY M1-33 FILED IN THE DOUGLAS COUNTY SURVEYOR'S OFFICE
- (): RECORD PER MARTIN SURVEY M33-65 FILED IN THE DOUGLAS COUNTY SURVEYOR'S OFFICE
- { }: RECORD PER MARTIN SURVEY M39-21 FILED IN THE DOUGLAS COUNTY SURVEYOR'S OFFICE
- < >: RECORD PER BLM 1978 SURVEY LINES NOTES PAGE 15864 FILED IN THE DOUGLAS COUNTY SURVEYOR'S OFFICE
- ** **: RECORD PER RUPPERT PARTITION PLAT 1994-0080 FILED IN THE DOUGLAS COUNTY SURVEYOR'S OFFICE
- // \/: RECORD PER DEED 1983-9961 FILED IN THE DOUGLAS COUNTY CLERK'S OFFICE
- Solid line: LINES SURVEYED
- Dashed line: LINES SURVEYED BLAZED, PAINTED, FLAGGED AND TAGGED
- X: FENCE LINE
- Dotted line: POSSIBLE DEED LINES PER 1983-9961 FILED IN THE DOUGLAS COUNTY CLERK'S OFFICE
- Circle with dot: FOUND COUNTY RIGHT OF WAY MONUMENT 3/4" IRON ROD WITH WHITE CEDAR POST BESIDE

REGISTERED PROFESSIONAL LAND SURVEYOR
Daniel E. Saily
OREGON NOVEMBER 10, 2020
DANIEL E. SAILY 85006
EXPIRES: 6/30/2024

BASIS OF BEARING FROM GPS OBSERVATION
OCRS ZONE COTTAGE GROVE TO CANYONVILLE (NAD 83)