

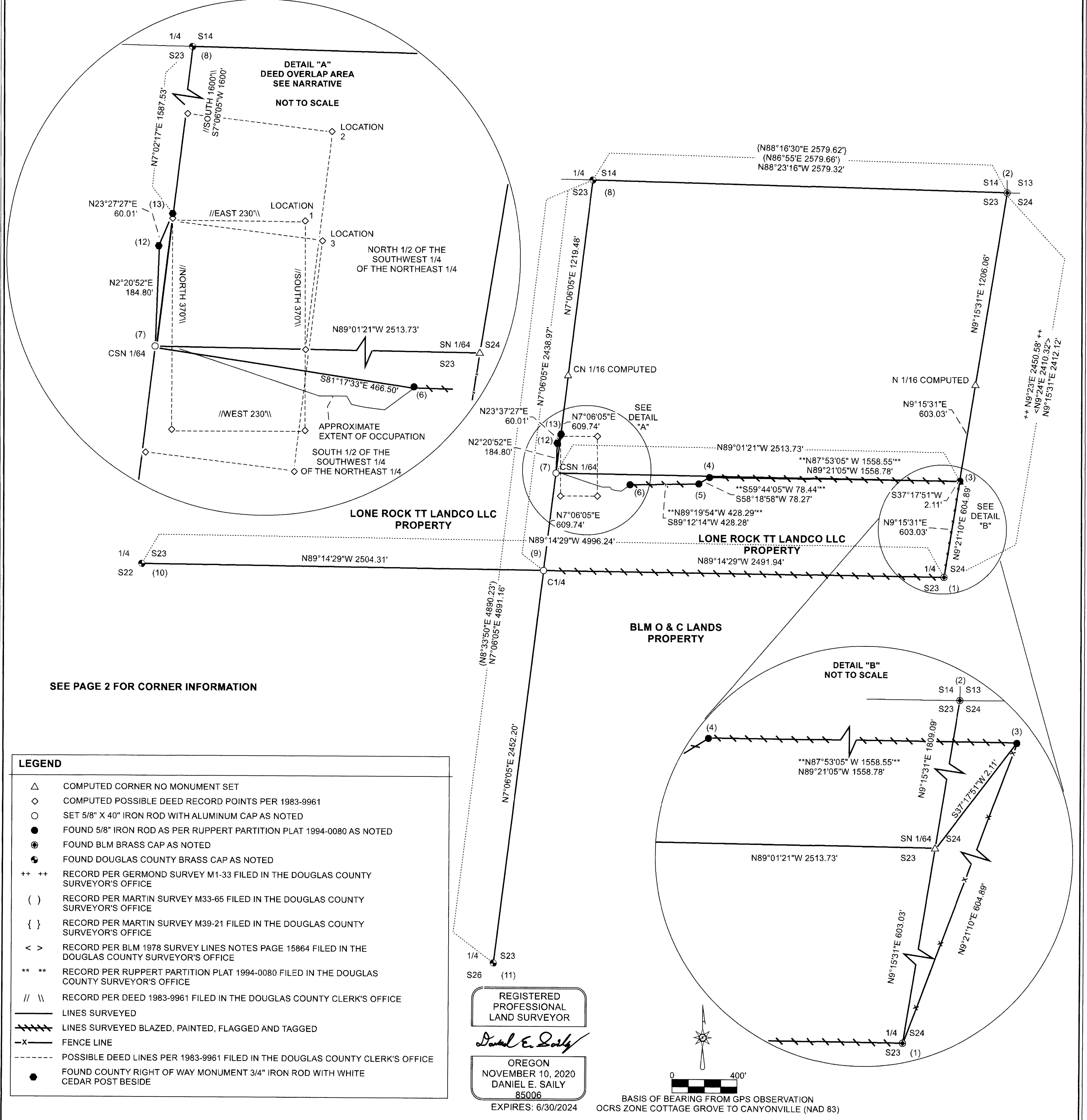
MAP OF SURVEY

SURVEY FOR: LONE ROCK TT LANDCO, LLC
P.O. BOX 1127 ROSEBURG, OR 97470
SURVEY BY: LONE ROCK TIMBER MANAGEMENT CO.
P.O. BOX 1127 ROSEBURG, OR 97470
SECTION 23, TOWNSHIP 29 SOUTH RANGE 4 WEST W.M.
DOUGLAS COUNTY, OREGON
TRACT: BMH7219/GUIDO DATE: DECEMBER 2023

NARRATIVE

THE PURPOSE OF THIS SURVEY IS TO SET THE CENTER 1/4 AND THE CENTER SOUTH NORTH 1/64 OF SECTION OF SECTION 23, TOWNSHIP 29 SOUTH RANGE 4 WEST AND MARK PROPERTY LINES FOR TIMBER MANAGEMENT ACTIVITIES. WE BEGAN THIS SURVEY BY TAKING DIRECT GPS AND RTK OBSERVATIONS ON THE EAST 1/4 CORNER (CORNER 1), THE NORTHEAST SECTION CORNER (CORNER 2), THE NORTH 1/4 CORNER (CORNER 8), THE WEST 1/4 CORNER (CORNER 9) AND ON AND NEAR THE SOUTH 1/4 CORNER (CORNER 10) OF SECTION 23. ALL GPS OBSERVATIONS WERE POST PROCESSED USING A LOCAL BASE WITH AN NGS OPUS SOLUTION. ALL RTK OBSERVATIONS WERE TAKEN SIMULTANEOUSLY WITH THE GPS OBSERVATIONS UTILIZING THE SAME LOCAL BASE. WE INITIATED OUR TRAVERSE AT THE EAST 1/4 CORNER OF SECTION 23 (CORNER 1) AND RAN A RANDOM TRAVERSE WEST AND NORTH TO GPS AND RTK CONTROL NEAR THE CENTER SOUTH NORTH 1/64 (CORNER 7). WE ALSO RAN A RANDOM TRAVERSE NORTH AND WEST FROM THE EAST 1/4 CORNER OF SECTION 23 (CORNER 1) THROUGH FOUND CORNERS (3), (4), (5) AND (6) TO GPS AND RTK CONTROL NEAR THE CENTER NORTH SOUTH 1/164 (CORNER 7). WE FOUND CORNERS (3), (4), (5) AND (6) IN GOOD CONDITION AND AS PER PARTITION PLAT 1994-0080. WE ALSO RAN A RANDOM CLOSED LOOP TRAVERSE FROM GPS AND RTK CONTROL ON A RIDGE NEAR THE SOUTH 1/4 CORNER THROUGH THE SOUTH 1/4 CORNER AND CLOSED BACK ON OUR GPS AND RTK CONTROL TO VERIFY OUR GPS AND RTK POSITION ON THE SOUTH 1/4 CORNER. WE RAN AN ADDITIONAL TRAVERSE NORTH FROM GPS AND RTK CONTROL NEAR THE CENTER SOUTH NORTH 1/64 THROUGH COUNTY RIGHT OF WAY MONUMENTS (CORNERS 11 AND 12) TO THE NORTH 1/4 CORNER (CORNER 8) TO CHECK OUR GPS AND RTK POSITIONS ON THESE MONUMENTS. WE ALSO OBSERVED SEVERAL CONTROL POINTS ON OUR RANDOM TRAVERSES AS AN ADDITIONAL CHECK. ALL GPS, RTK AND TRAVERSE OBSERVATIONS CHECKED WITH EACH OTHER VERY WELL. THE NORTH LINE OF THE LONE ROCK PROPERTY FROM FOUND CORNERS 3 TO 6 WAS PREVIOUSLY AGREED TO BY LONE ROCK AND WESTRUP IN PROPERTY LINE AGREEMENT DOCUMENTS 94-19744 AND 94-19745 AND SHOWN ON PARTITION PLAT 1994-0080. HOWEVER, FOUND CORNER 3 WAS ONLY INTENDED TO "DETERMINE THE DIRECTION, AND NOT THE END, FOR THE EAST-WEST PROPERTY LINE BETWEEN WESTRUP AND LONE ROCK TIMBER CO.", AS NOTED ON PARTITION PLAT 1994-0080. THEREFORE WE FELT IT IMPORTANT TO NOTE THAT FOUND CORNER 3 BEARS N37°17'51"E 2.11 FEET FROM OUR CALCULATED POSITION OF THE SOUTH NORTH 1/64 CORNER BETWEEN SECTION 23 AND 24 (SEE DETAIL "B"). HOWEVER, GIVEN THAT CORNER 3 IS VERY CLOSE TO THE PROPER POSITION OF THE SOUTH NORTH 1/64, AND THAT IT LIES WITHIN AN EXISTING, LONG STANDING FENCE LINE, WE FEEL THAT IT WOULD NOT BE UNREASONABLE TO UTILIZE THIS FOUND CORNER AS THE SOUTH NORTH 1/64. LONE ROCK PLANS TO DISCUSS THIS WITH THEIR NEIGHBORS TO THE EAST. DURING OUR RESEARCH FOR THIS SURVEY, WE DISCOVERED A POTENTIAL LARGE DEED OVERLAP (SEE DETAIL "A") NEAR THE CENTER SOUTH NORTH 1/64 CORNER. BOTH LONE ROCK'S AND THE NEIGHBOR'S DEEDS CALL TO THE 1/64 LINE BETWEEN THE NORTH 1/2 AND THE SOUTH 1/2 OF THE SOUTHWEST 1/4 OF THE NORTHEAST 1/4. HOWEVER, THE DISTANCES AND DIRECTION OF THE METES AND BOUNDS DESCRIPTION OF THE PARCEL DESCRIBED IN DEED 1983-9961 POTENTIALLY EXTEND SOUTHERLY PAST THE 1/64 LINE. OCCUPATION AND IMPROVEMENTS HAVE ALSO BEEN MADE SOUTH OF THE 1/64 LINE BY THE NEIGHBOR. WE HAVE DEPICTED, IN DETAIL "A", THREE POSSIBLE LOCATIONS FOR THE PARCEL DESCRIBED IN 1983-9961. LONE ROCK PLANS TO ENTER NEGOTIATIONS WITH THE NEIGHBOR IN THE NEAR FUTURE TO RESOLVE THIS MATTER. THEREFORE, WE DID NOT MARK DEED PROPERTY LINES ALONG THIS PORTION OF THE SURVEY. LINES SHOWN AS MARKED HEREON, WERE 1/4 BLAZED AND PAINTED WITH RED PAINT, FLAGGED WITH RED "PROPERTY LINE" AND BLUE RIBBON, TAGGED WITH LONE ROCK TIMBER ALUMINUM TAGS AND 5 1/2 FT TALL STEEL GALVANIZED POSTS WERE PLACED ON LINE BETWEEN THE LONE ROCK AND WESTRUP PROPERTIES. BEARING TREE DISTANCES WERE MEASURED TO AN ALUMINUM NAIL AT THE SIDE CENTER, AND BEARINGS WERE COMPUTED FROM HORIZONTAL ANGLES MEASURED FROM TRAVERSE CONTROL POINTS TO AN ALUMINUM NAIL IN THE CENTER FACE OF THE TREE (EXCEPT AS NOTED). BEARING TREES WERE SCRIBED AT THE ROOT CROWN AND THE FACES WERE PAINTED WITH RED PAINT. THIS SURVEY WAS CONDUCTED USING A TRIMBLE C5 TOTAL STATION AND TRIMBLE R10 AND R12I GPS AND RTK RECEIVERS UTILIZING RTK AND STATIC OBSERVATIONS FROM A LOCAL BASE CORRECTED TO AN NGS OPUS SOLUTION, WITH BRETT RAGON, WESTON ADDINGTON AND IGNACIO ROMAN ASSISTING ME.

FILED
DATE: 1-16-2024 BY: [Signature]
THIS SURVEY CONSISTS OF:
MAP: M183-28 A & B
NARRATIVE:
CORNER RPT:
DOUGLAS COUNTY SURVEYOR



SEE PAGE 2 FOR CORNER INFORMATION

LEGEND
- Triangle: COMPUTED CORNER NO MONUMENT SET
- Diamond: COMPUTED POSSIBLE DEED RECORD POINTS PER 1983-9961
- Circle: SET 5/8" X 40" IRON ROD WITH ALUMINUM CAP AS NOTED
- Solid circle: FOUND 5/8" IRON ROD AS PER RUPPERT PARTITION PLAT 1994-0080 AS NOTED
- Circle with dot: FOUND BLM BRASS CAP AS NOTED
- Circle with cross: FOUND DOUGLAS COUNTY BRASS CAP AS NOTED
- ++ ++: RECORD PER GERMOND SURVEY M1-33 FILED IN THE DOUGLAS COUNTY SURVEYOR'S OFFICE
- (): RECORD PER MARTIN SURVEY M33-65 FILED IN THE DOUGLAS COUNTY SURVEYOR'S OFFICE
- { }: RECORD PER MARTIN SURVEY M39-21 FILED IN THE DOUGLAS COUNTY SURVEYOR'S OFFICE
- < >: RECORD PER BLM 1978 SURVEY LINES NOTES PAGE 15864 FILED IN THE DOUGLAS COUNTY SURVEYOR'S OFFICE
- ** **: RECORD PER RUPPERT PARTITION PLAT 1994-0080 FILED IN THE DOUGLAS COUNTY SURVEYOR'S OFFICE
- // \/: RECORD PER DEED 1983-9961 FILED IN THE DOUGLAS COUNTY CLERK'S OFFICE
- Solid line: LINES SURVEYED
- Dashed line: LINES SURVEYED BLAZED, PAINTED, FLAGGED AND TAGGED
- X: FENCE LINE
- Dotted line: POSSIBLE DEED LINES PER 1983-9961 FILED IN THE DOUGLAS COUNTY CLERK'S OFFICE
- Circle with dot: FOUND COUNTY RIGHT OF WAY MONUMENT 3/4" IRON ROD WITH WHITE CEDAR POST BESIDE

REGISTERED PROFESSIONAL LAND SURVEYOR
Daniel E. Saily
OREGON NOVEMBER 10, 2020
DANIEL E. SAILY 85006
EXPIRES: 6/30/2024

0 400'
BASIS OF BEARING FROM GPS OBSERVATION
OCRS ZONE COTTAGE GROVE TO CANYONVILLE (NAD 83)

MAP FILE M183-28

MAP OF SURVEY

SURVEY FOR: LONE ROCK TIMBERLAND TT LANDCO, LLC
P.O. BOX 1127 ROSEBURG, OR 97470
SURVEY BY: LONE ROCK TIMBER MANAGEMENT CO.
P.O. BOX 1127 ROSEBURG, OR 97470
SECTION 23, TOWNSHIP 29 SOUTH RANGE 4 WEST W.M.
DOUGLAS COUNTY, OREGON

TRACT: BMH7219/GUIDO DATE: DECEMBER 2023

FILED	
DATE: 1-1-2024	BY: [Signature]
THIS SURVEY CONSISTS OF:	
MAP: M183-28 A&B	
NARRATIVE:	
CORNER RPT:	
DOUGLAS COUNTY SURVEYOR	

PAGE 2 OF 2

- 1) THE QUARTER CORNER BETWEEN SECTION 23 AND 24, T29S R4W (PLSS 600340)
FOUND 1967 BLM BRASS CAP AND PIPE AS PER BLM RE-SURVEY VOL.39 PAGES 15863-64.
-- 32" ROTTEN DOUGLAS-FIR STUMP BEARS N70°W 8.4 FT. (N721/4°W 8.91 FT). BLM TAG AND PARTIALLY VISIBLE SCRIBE
-- ROTTEN DOUGLAS-FIR STUMP BEARS S55 1/4°E 14.3 FT. (S52 1/2°E 13.86 FT). NO TAG OR VISIBLE SCRIBE
-- 22" DOUGLAS-FIR BEARS S80°W 10.2 FT. (BLM TAG READS N79 1/2°E 16 LINKS). BLM TAG AND WELL HEALED FACE
-- 21" GRAND FIR FOUND AT RECORD S65°E 17.16 FT (26LINKS). BLM TAG AND WELL HEALED FACE
-- NEW 20" WESTERN RED CEDAR BEARS S37 1/4°E 69.2 FT. WE SCRIBE S24 BT AND TAG.
-- NEW 7" GRAND FIR BEARS N74°E 5.5 FT. (TAPE AND COMPASS MEASUREMENT) WE SCRIBE X BT AND TAG
-- NEW 7" DOUGLAS-FIR BEARS N11°W 5.5 FT. (TAPE AND COMPASS MEASUREMENT) WE SCRIBE X BT AND TAG
CORNER LIES ON GENTLE NORTH FACING SLOPE IN MIXED TIMBER, 4 FEET WEST OF AN EXISTING BARB WIRE FENCE. TOP OF MONUMENT IS 0.5 FEET ABOVE GROUND LEVEL.
- 2) THE SECTION CORNER OF SECTIONS 14, 13, 23 AND 24 T29S R4W (PLSS 600400)
FOUND 1967 BLM BRASS CAP AND PIPE AS PER BLM DEPENDENT RE-SURVEY VOL. 52 PAGE 19941.
-- BEARING TREES FOUND AS PER 1995 BLM LINE NOTES VOLUME 52 PAGE 19941
- 3) PROPERTY CORNER
FOUND 5/8" IRON ROD AS PER RUPPERT PARTITION PLAT 1994-0080.
-- NEW 8" DOUGLAS-FIR BEARS S63°W 10.9 FT. (TAPE AND COMPASS MEASUREMENT) WE TAG AND SCRIBE BT.
CORNER LINES IN A BARB WIRE FENCE RUNNING APPROXIMATELY NORTHEAST-SOUTHWEST. TOP OF CORNER MONUMENT IS 1 FOOT ABOVE GROUND LEVEL.
- 4) PROPERTY CORNER
FOUND 5/8" IRON ROD WITH YELLOW PLASTIC CAP AS PER RUPPERT PARTITION PLAT 1994-0080.
-- NEW 35" INCENSE CEDAR BEARS S43 1/2°W 34.2 FT. WE TAG AND SCRIBE BT
-- NEW 14" COTTON WOOD BEARS N3°E 30.2 FT. WE TAG AND SCRIBE BT.
CORNER LIES APPROXIMATELY 25 FT. SOUTHEAST OF MOWED LAWN EDGE. TOP OF CORNER MONUMENT IS 0.6 FT ABOVE GROUND LEVEL. WE PLACE A 5 1/2 FT. TALL STEEL U-POST 1.0 FT. NORTH.
- 5) PROPERTY CORNER
FOUND 5/8" IRON ROD WITH YELLOW PLASTIC CAP AS PER RUPPERT PARTITION PLAT 1994-0080.
-- NEW 19" GRAND FIR BEARS N62°W 1.0 FT. (TAPE AND COMPASS MEASUREMENT) WE SCRIBE BT AND TAG.
CORNER LIES APPROXIMATELY 50 FT. SOUTH OF MOWED LAWN EDGE. WE PLACE A 5 1/2 FT. TALL STEEL U-POST 1.0 FT. NORTH.
- 6) PROPERTY CORNER
FOUND 5/8" IRON ROD WITH YELLOW PLASTIC CAP AS PER RUPPERT PARTITION PLAT 1994-0080.
-- NEW 22" OREGON ASH BEARS N7 1/4°E 21.3 FT. WE TAG.
CORNER LIES BESIDE A COLLAPSED OUTBUILDING. AN EXISTING T-POST LIES SOUTH 3.8 FT.
- 7) CENTER-SOUTH-NORTH 1/64 OF SECTION 23.
SET 5/8" X 40" IRON ROD WITH 2 1/2" ALUMINUM CAP MARKED LONE ROCK TIMBER CSN 1/64 S23 2023 85006PLS
-- NEW 15" DOUGLAS-FIR BEARS N77°W 14.9 FT. WE SCRIBE CSN 1/64 BT AND TAG.
-- NEW 7" BIGLEAF MAPLE BEARS S52°E 5.8 FT. WE SCRIBE BT AND TAG.
CORNER LIES AT BOTTOM OF STEEP NORTH FACING SLOPE. TOP OF MONUMENT IS AT GROUND LEVEL.
- 8) THE QUARTER CORNER BETWEEN SECTION 14 AND 23, T29S R4W (PLSS 540400)
FOUND 2" ALUMINUM CAP AS PER DEGROOT CS 65/78-42, AS CORRECTED
-- 27" WHITE OAK FOUND PER RECORD S43°30'W 28.5 FT. BEARING TREE TAG AND WELL HEALED FACE.
-- 18" WHITE OAK FOUND PER RECORD S70°45'E 66.0 FT. BEARING TREE TAG AND WELL HEALED FACE.
-- 5/8" IRON ROD FOUND PER RECORD S24°52'54"W 2.81 FT.
-- TREATED RAIL ROAD TIE POST FOUND PER RECORD N62°30'W 1.25 FT.
CORNER LIES 9 FT SOUTH OF CENTER OF PRIVATE GRAVEL DRIVEWAY APPROXIMATELY 600 FEET EAST OF JUNCTION WITH LOUIS CREEK COUNTY ROAD #176. TOP OF CORNER MONUMENT IS AT GROUND LEVEL.
- 9) THE CENTER QUARTER CORNER OF SECTION 23, T29S R4W (PLSS 540340)
SET 5/8" X 40" IRON ROD WITH 2 1/2" ALUMINUM CAP MARKED LONE ROCK TIMBER T29S R4W C1/4 S23 2023 85006PLS.
-- NEW 22" DOUGLAS-FIR BEARS N76 1/4°W 28.4 FT. WE TAG AND SCRIBE C1/4 S23 BT.
-- NEW 17" DOUGLAS-FIR BEARS N81 1/2°50.2 FT. WE TAG AND SCRIBE X BT * N 81 1/2° E
-- NEW 19" DOUGLAS-FIR BEARS S72 1/4°E 33.7 FT. WE TAG AND SCRIBE C1/4 S23 BT.
-- NEW 14" DOUGLAS-FIR BEARS S30 1/2°W 31.7 FT. WE TAG AND SCRIBE X BT.
CORNER LIES ON A STEEP NORTH SLOPE APPROXIMATELY 125 FT NORTH OF RIDGE BEARING EAST-WEST. TOP OF CORNER MONUMENT IS 1.1 FT. ABOVE GROUND LEVEL.
WE PLACE A SMALL MOUND OF STONE AROUND THE CORNER, AND PLACE A 5 1/2 FT TALL U-POST 1.0 FT. NORTH.
- 10) THE QUARTER CORNER BETWEEN SECTIONS 22 AND 23 T29S R4W (PLSS 500340)
FOUND DOUGLAS COUNTY SURVEYOR'S BRASS CAP AS PER CS 67/51-28.
-- 22" APPLE FOUND AS PER RECORD
-- NE CORNER OF BARN FOUND AS PER RECORD
-- 6"X6" TREATED POST FOUND PER RECORD
-- EAST END OF CONCRETE BLOCK WALL FOUND PER RECORD
-- WEST END OF CONCRETE BLOCK WAS FOUND PER RECORD
CORNER LIES IN AN OPEN PASTURE. TOP OF CORNER MONUMENT IS 0.5 FT. BELOW GROUND LEVEL. CRUSHED ROCK WAS PLACED OVER TOP OF THE CORNER.
- 11) THE QUARTER CORNER BETWEEN SECTIONS 23 AND 26 T29S R4W (PLSS 540300)
FOUND DOUGLAS COUNTY SURVEYOR'S BRASS CAP AS PER CS47/101
-- NEW 10" INCENSE CEDAR BEARS S20°E 15.0 FT
-- NEW 17" DOUGLAS-FIR BEARS S47 3/4°W 21.4 FT
-- NEW 15" INCENSE CEDAR BEARS N26 1/2°W 25.4 FT
-- NEW 20" INCENSE CEDAR BEARS N16 1/2°E 27.4 FT.
NO REMAINING EVIDENCE OF 1956 BYRON BEARING TREES. CORNER LIES ON WEST FACING SLOPE APPROXIMATELY 150 FEET EAST OF WIDE DRAW RUNNING SOUTH, IN MIXED TIMBER. TOP OF CORNER MONUMENT IS 1.1 FEET ABOVE GROUND LEVEL.
- 12) COUNTY ROAD RIGHT OF WAY MONUMENT
FOUND 3/4" IRON ROD AS PER 1960 COUNTY ROAD MAP 08540912
MONUMENT LIES ON TOP OF CUT SLOPE WITH A 4" X 4" CEDAR POST BESIDE. TOP OF MONUMENT IS 0.1 FEET ABOVE GROUND LEVEL.
- 13) COUNTY ROAD RIGHT OF WAY MONUMENT
FOUND 3/4" IRON ROD AS PER 1960 COUNTY ROAD MAP 08540912
MONUMENT LIES ON TOP OF STEEP CUT SLOPE WITH A 4" X 4" CEDAR POST BESIDE. TOP OF MONUMENT IS 0.2 FEET ABOVE GROUND LEVEL.

REGISTERED
PROFESSIONAL
LAND SURVEYOR

Daniel E. Saily

OREGON
NOVEMBER 10, 2020
DANIEL E. SAILY
85006
EXPIRES: 6/30/2024