

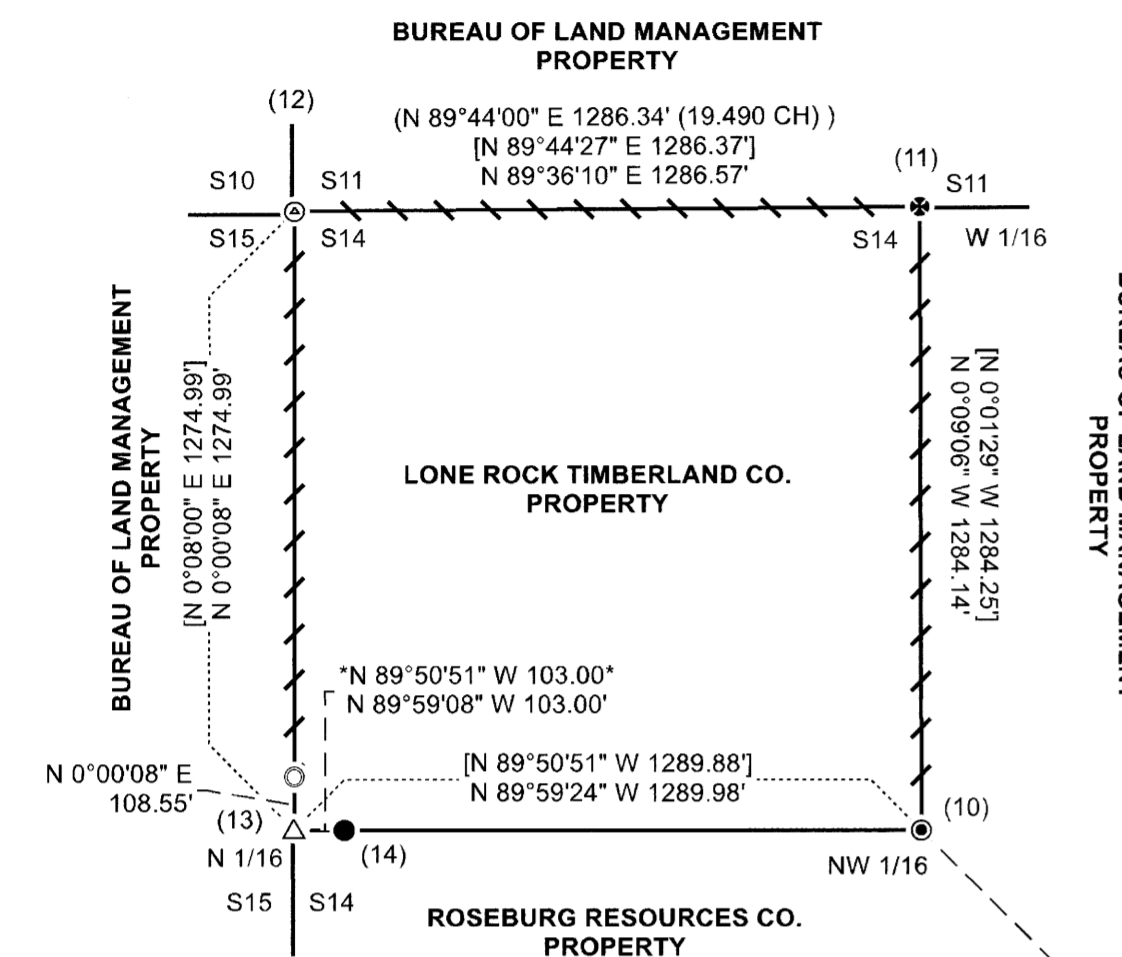
# MAP OF SURVEY

SURVEY FOR: LONE ROCK TIMBERLAND CO.  
 P.O. BOX 1127 ROSEBURG, OREGON 97470  
 SURVEY BY: LONE ROCK TIMBER MANAGEMENT COMPANY  
 P.O. BOX 1127 ROSEBURG, OREGON 97470

FILED  
 DATE: 1-10-2024 BY: *DS*  
 THIS SURVEY CONSISTS OF:  
 MAP: M183-27A&B  
 NARRATIVE:  
 CORNER RPT.  
 DOUGLAS COUNTY  
 SURVEYOR

SOUTHEAST QUARTER AND THE NORTHWEST QUARTER OF THE NORTH WEST QUARTER OF SECTION 14,  
 TOWNSHIP 28 SOUTH RANGE 4 WEST WILLAMETTE MERIDIAN, DOUGLAS COUNTY, OREGON

DATE: DECEMBER 2023 TRACT: BMH 7207



## NARRATIVE:

THE PURPOSE OF THIS SURVEY IS TO SET PROPERTY CORNERS AND MARK PROPERTY LINES FOR THE LONE ROCK TIMBERLAND CO. PROPERTY IN THE SOUTH HALF AND NORTHEAST QUARTER OF THE SOUTHEAST QUARTER AND THE NORTHWEST QUARTER OF SECTION 14, TOWNSHIP 28 SOUTH RANGE 4 WEST W.M., FOR TIMBER MANAGEMENT PURPOSES. WE BEGAN THIS SURVEY BY SEARCHING FOR ALL KNOWN MONUMENTS; (CORNERS 1-5) AND (CORNERS 9-14), AT THE NORTH 1/16TH CORNER OF SECTIONS 14 AND 15 (CORNER 13) WE FOUND NO EVIDENCE OF THE CORNER MONUMENT SET BY EDWARDS, DUE TO THE CONSTRUCTION OF A LOGGING LANDING. HOWEVER, WE DID LOCATE EDWARDS WITNESS MONUMENT AS PER CS 65-069-022. ALL OTHER MONUMENTS FOR THE NORTHWEST QUARTER OF THE NORTHWEST QUARTER WERE FOUND IN GOOD CONDITION. DURING OUR INITIAL SEARCH FOR MONUMENTS IN THE SOUTHEAST QUARTER, WE FOUND UNRECORDED IRON RODS NEAR THE CENTER EAST 1/16TH, THE SOUTHEAST 1/16TH, AND THE CENTER SOUTH 1/16TH. DURING OUR SEARCH, WE ALSO FOUND UNRECORDED HALF INCH IRON RODS PLACED AT INTERVISIBLE INTERVALS ALONG AND NEAR THE SOUTH SECTION LINE BETWEEN THE SOUTH QUARTER CORNER OF SECTION 14 (CORNER 1) AND THE SOUTHEAST SECTION CORNER OF SECTION 14 (CORNER 2).

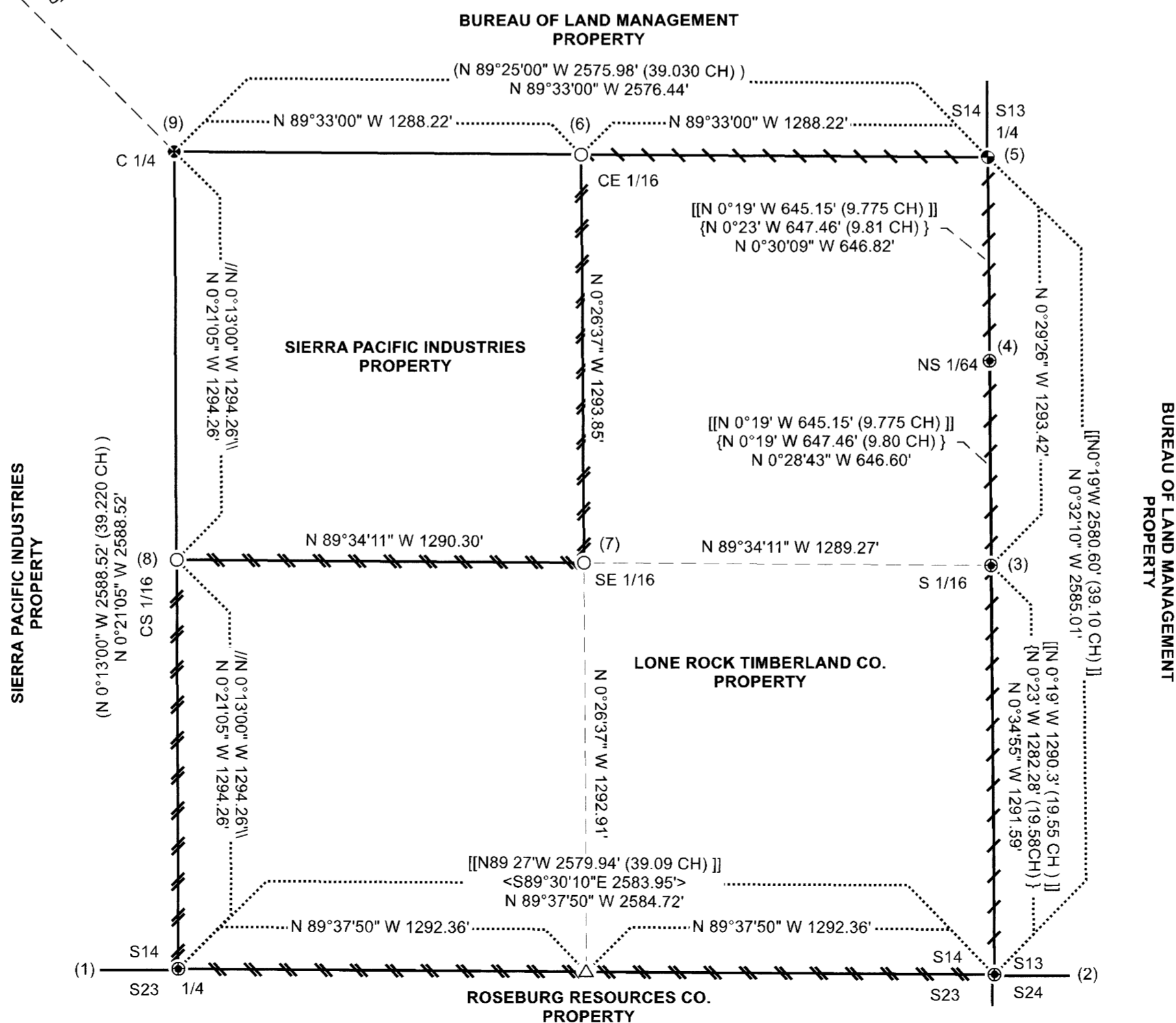
WE BEGAN OUR SURVEY OF THE SOUTHEAST QUARTER OF SECTION 14 AT THE QUARTER CORNER BETWEEN SECTIONS 14 AND 23 (CORNER 1) AND RAN A RANDOM CLOSED LOOP TRAVERSE THROUGH THE SOUTHEAST SECTION CORNER (CORNER 2), THE SOUTH 1/16TH CORNER (CORNER 3), THE NORTH SOUTH 1/64TH CORNER (CORNER 4), THE QUARTER CORNER BETWEEN SECTIONS 13 AND 14 (CORNER 5), THE FOUND UNRECORDED IRON RODS NEAR THE CENTER EAST 1/16TH, SOUTHEAST 1/16TH, AND THE CENTER SOUTH 1/16TH AND CLOSED BACK ON THE QUARTER CORNER BETWEEN SECTIONS 14 AND 23. WE ALSO PERFORMED A RANDOM CROSS THE TRAVERSE FROM TRAVERSE AND GPS CONTROL ON A ROAD NEAR THE SOUTHEAST 1/16TH, TO TRAVERSE AND GPS CONTROL ON THE SOUTH SECTION LINE NEAR THE SOUTHEAST SECTION CORNER. WE THEN RAN A RANDOM TRAVERSE FROM TRAVERSE AND GPS CONTROL ON A ROAD NEAR THE CENTER SOUTH 1/16TH CORNER, NORTHERLY ALONG EXISTING ROADS, THROUGH SEVERAL GPS CONTROL POINTS, AND CLOSED IT TO GPS CONTROL ON AND NEAR THE CENTER 1/4 OF SECTION 14. WE THEN PROPERLY SUBDIVIDED THE SOUTHEAST QUARTER OF SECTION 14 BY PROPORTIONING AND SETTING THE CENTER EAST 1/16TH (CORNER 6), AND THE CENTER SOUTH 1/16TH (CORNER 8) BETWEEN THE FOUND QUARTER CORNER OF SECTIONS 13 AND 14, THE FOUND CENTER QUARTER OF SECTION 14 AND THE FOUND QUARTER CORNER OF SECTIONS 14 AND 23. WE THEN COMPUTED THE EAST 1/16TH BETWEEN SECTIONS 14 AND 23 AT PROPER PROPORTION AND COMPUTED AND SET THE SOUTHEAST 1/16TH (CORNER 7) BY INTERSECTION OF BEARINGS BETWEEN THE 1/16TH CORNERS. WE FOUND THAT ALL THREE UNRECORDED IRON RODS NEAR THE CENTER EAST 1/16TH, THE SOUTHEAST 1/16TH, AND THE CENTER SOUTH 1/16TH, ALTHOUGH RELATIVELY CLOSE, DID NOT FIT OUR PROPERLY PROPORTIONED AND SET POSITIONS. THE FOUND INTERVISIBLE IRON RODS ALONG AND NEAR THE SOUTH LINE OF SECTION 14 WERE TIED AND FOUND TO BE GENERALLY CLOSE TO LINE, WITH SOME BEING NEARLY ONLINE AND OTHERS BEING OVER ONE FOOT OFF LINE.

WE THEN PERFORMED AN INDEPENDENT RANDOM CLOSED LOOP TRAVERSE AROUND THE NORTHWEST QUARTER OF THE NORTHWEST QUARTER OF SECTION 14 AND TRANSLATED AND ROTATED IT TO OUR SURVEY OF THE SOUTHEAST QUARTER OF SECTION 14 WITH MULTIPLE GPS OBSERVATIONS ON SURVEY CONTROL POINTS AND FOUND CORNERS. WE BEGAN THIS SURVEY AT THE WITNESS MONUMENT (CORNER 14) TO THE NORTH 1/16TH (CORNER 13) OF SECTIONS 14 AND 15. WE THEN TRAVERSED THROUGH THE NORTHWEST SECTION CORNER (CORNER 12), THE WEST 1/16TH (CORNER 11), THE NORTHWEST 1/16TH (CORNER 10), AND CLOSED IT BACK TO THE WITNESS MONUMENT. PRIOR TO TRANSLATING AND ROTATING OUR SURVEY AROUND THE NORTHWEST QUARTER OF THE NORTHWEST QUARTER, WE COMPUTED THE NORTH 1/16TH BETWEEN SECTIONS 14 AND 15 BY UTILIZING EDWARDS M158-30 SURVEY AS A BASIS OF BEARING AND THEN MAKING A DISTANCE AND BEARING OFFSET FROM EDWARDS CS 65-069-022 (M158-30 BASIS OF BEARING) FROM THE FOUND WITNESS MONUMENT. ADDITIONALLY, OUR DISTANCE FROM THE COMPUTED NORTH 1/16TH CORNER AND THE NORTHWEST SECTION CORNER MATCHED VERY WELL WITH EDWARDS M158-30 RECORD. WE SET AN ADDITIONAL REFERENCE MONUMENT ON THE SECTION LINE TO THE NORTH OF THE NORTH 1/16TH CORNER POSITION, AS SHOWN HEREON.

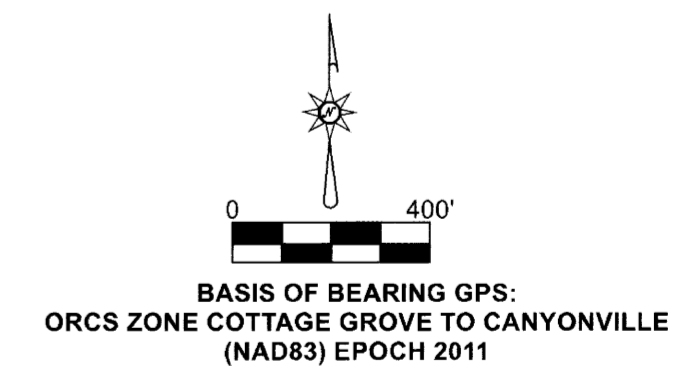
PROPERTY LINES SHOWN HEREON AS MARKED WERE QUARTER BLAZED AND PAINTED WITH RED PAINT, RED PROPERTY LINE RIBBON AND FLORESCENT BLUE RIBBON WERE PLACED ON TRUE PROPERTY LINE AND ALUMINUM PROPERTY LINE TAGS WERE PLACED AT INTERVALS ALONG THE LINES. 5 1/2-FOOT-TALL STEEL GALVANIZED POST WERE PLACED ON TRUE LINE BETWEEN THE ROSEBURG RESOURCES AND LONE ROCK PROPERTIES (CORNER 1 TO CORNER 2) AND BETWEEN SIERRA PACIFIC INDUSTRIES AND LONE ROCK PROPERTIES (CORNERS 6 AND 7, 7 AND 8, 8 AND 1). BEARING TREES WERE SCRIBED AT ROOT CROWN WITH DISTANCES MEASURED TO AN ALUMINUM NAIL AT SIDE CENTER AND BEARINGS WERE COMPUTED BY TURNING HORIZONTAL ANGLES FROM TRAVERSE CONTROL POINTS TO AN ALUMINUM NAIL IN FACE CENTER. THIS SURVEY WAS CONDUCTED USING TRIMBLE C5 AND TOPCON ES 62 TOTAL STATIONS, TRIMBLE R10 AND TRIMBLE R12I GNSS AND RTK RECEIVERS UTILIZING A LOCAL BASE, WITH BRETT RAGON, IGNACIO ROMAN, AND TREVOR CLEMO ASSISTING ME.

SEE PAGE 2 FOR CORNER INFORMATION

LEGEND	
	FOUND 1958 BLM BRASS CAP AND IRON PIPE
	FOUND 1961 DOUGLAS COUNTY BRASS CAP AND IRON PIPE
	FOUND 1965 BLM BRASS CAP AND IRON PIPE
	FOUND 1987 BLM BRASS CAP AND IRON PIPE
	FOUND 2008 EDWARDS ALUMINUM CAP M158-30
	FOUND 2010 EDWARDS ALUMINUM CAP WITNESS MONUMENT CS 65/69-22
	SET 5/8" X 40" IRON ROD WITH 2.5" ALUMINUM CAP MARKED AS NOTED
	SET 5/8" X 40" IRON ROD WITH ORANGE PLASTIC CAP MARKED LONE ROCK TIMBER 85006PLS
	CALCULATED POSITION, NOT SET OR FOUND
	LINES SURVEYED, BLAZE, PAINTED, RIBBONED, TAGGED AND POSTED
	LINES SURVEYED BLAZED, PAINTED, RIBBONED, AND TAGGED
	LINES SURVEYED BUT NOT MARKED
	PROJECTED LINES
	1967 BLM SURVEY
	1973 HAINES SURVEY HEN10
	1977 RUPERT SURVEY M65-46
	1991 BLM SURVEY
	2002 WARD SURVEY M140-26
	2008 EDWARDS SURVEY M158-30
	2010 EDWARDS CORNER REPORT CS65/69-22
	COMPUTED INVERSE FROM 2008 EDWARDS SURVEY M158-30



REGISTERED  
 PROFESSIONAL  
 LAND SURVEYOR  
*Daniel E Saily*  
 OREGON  
 NOVEMBER 10, 2020  
 DANIEL E. SAILY  
 85006  
 EXPIRES: 6/30/2024



MAP FILE M183-27A&B