

RECORD OF SURVEY
 LOCATED IN THE NORTHEAST, NORTHWEST, SOUTHEAST, AND SOUTHWEST QUARTERS OF SECTION 24,
 TOWNSHIP 30 SOUTH, RANGE 7 WEST, WILLAMETTE MERIDIAN,
 DOUGLAS COUNTY, OREGON
 AUGUST 2, 2023

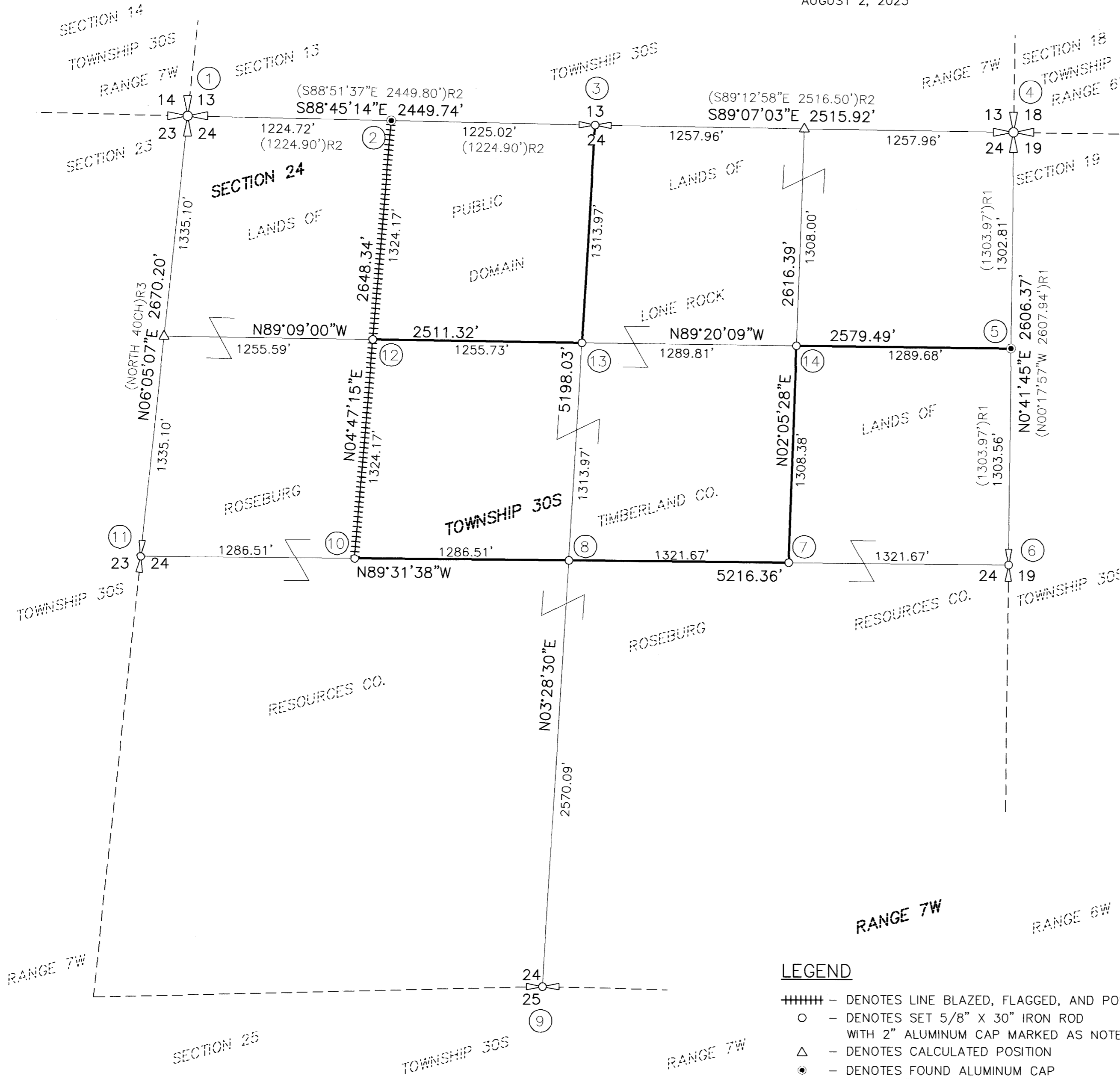
FILED
 Date: 8-3-2023 By: [Signature]
 This survey consists of:
 Map: M182-53 A&B
 Narrative:
 Corner Rpt:
 DOUGLAS COUNTY
 SURVEYOR

MAP FILE M182-53A

NARRATIVE

THE PURPOSE OF THIS SURVEY WAS TO MARK THE NORTH-SOUTH CENTER LINE OF THE NORTHWEST QUARTER OF SECTION 24, TOWNSHIP 30 SOUTH, RANGE 7 WEST, WILLAMETTE MERIDIAN, DOUGLAS COUNTY OREGON, AND SET THE UNESTABLISHED CORNERS BETWEEN THE LANDS OF ROSEBURG RESOURCES CO. AND LONE ROCK TIMBERLANDS CO. BEING THE CENTER QUARTER CORNER, THE NORTHEAST AND NORTHWEST SIXTEENTH CORNERS, THE CENTER-EAST SIXTEENTH CORNER, THE CENTER-WEST SIXTEENTH CORNER, AND THE CENTER-NORTH SIXTEENTH CORNER OF SAID SECTION 24. THE PROCEDURE WAS AS FOLLOWS:

MONUMENTS OF RECORD WERE TIED AND HELD AS SHOWN. A HAND DRAWN SKETCH OF SECTION 24 FROM MAY 10, 1976 WAS PROVIDED BY LONE ROCK TIMBERLANDS CO. SHOWING SEVERAL MONUMENTS BEING SET AT THE ABOVE DESCRIBED CORNERS. THERE IS NO MAP OF RECORD FOR THIS SURVEY AND NO NARRATIVE THAT ACCOMPANIES THIS SKETCH TO PROVIDE INFORMATION OF THE METHODS USED TO ESTABLISH THESE CORNERS. THOSE MONUMENTS RECOVERED ARE DESCRIBED ON SHEET 2 OF THIS MAP AND WERE NOT HELD AS THE TRUE CORNERS. THE CENTER QUARTER CORNER WAS ESTABLISHED AT THE INTERSECTION BETWEEN THE FOUND NORTH, SOUTH, EAST, AND WEST QUARTER CORNERS OF SAID SECTION 24. A SEARCH FOR THE ORIGINAL CORNER POST AND BEARING TREES OF THE WEST QUARTER CORNER WAS PERFORMED. NOTHING WAS FOUND AND THE MONUMENT SET PER THE 1953 SURVEY BY CLAUDE KERR WAS HELD FOR WEST QUARTER CORNER OF SAID SECTION 24. A MONUMENT WAS SET TO DELINEATE CENTER QUARTER CORNER AS SHOWN. THE CENTER-NORTH SIXTEENTH CORNER WAS ESTABLISHED AT MIDPOINT BETWEEN THE ESTABLISHED CENTER QUARTER CORNER AND THE FOUND NORTH QUARTER CORNER OF SAID SECTION 24. A MONUMENT WAS SET TO DELINEATE THIS LOCATION AS SHOWN. THE CENTER-WEST SIXTEENTH CORNER WAS SET AT MIDPOINT BETWEEN THE ESTABLISHED CENTER QUARTER CORNER AND THE FOUND WEST QUARTER CORNER OF SAID SECTION 24. A MONUMENT WAS SET TO DELINEATE THIS LOCATION AS SHOWN. THE NORTH SIXTEENTH CORNER BETWEEN SAID SECTION 24 AND SECTION 23 WAS CALCULATED AT THE MIDPOINT BETWEEN THE FOUND WEST QUARTER CORNER AND THE FOUND NORTHWEST SECTION CORNER OF SAID SECTION 24. NO MONUMENT WAS SET AT THIS POSITION. THE NORTHWEST SIXTEENTH CORNER WAS ESTABLISHED AT THE INTERSECTION OF THAT LINE CREATED BETWEEN THE FOUND WEST SIXTEENTH CORNER BETWEEN SECTION 13, SAID TOWNSHIP 30 SOUTH, SAID RANGE 7 WEST, AND SAID SECTION 24 AND THE ESTABLISHED CENTER-WEST SIXTEENTH CORNER AND THAT LINE CREATED BETWEEN THE ESTABLISHED CENTER-NORTH SIXTEENTH CORNER AND SAID CALCULATED NORTH SIXTEENTH CORNER BETWEEN SAID SECTIONS 23 AND 24. A MONUMENT WAS SET TO DELINEATE THIS LOCATION AS SHOWN. THE CENTER-EAST SIXTEENTH CORNER WAS ESTABLISHED AT MIDPOINT BETWEEN THE ESTABLISHED CENTER QUARTER CORNER AND THE FOUND EAST QUARTER CORNER OF SAID SECTION 24. A MONUMENT WAS SET TO DELINEATE THIS LOCATION AS SHOWN. THE EAST SIXTEENTH BETWEEN SAID SECTIONS 13 AND 24 WAS CALCULATED AT THE MIDPOINT BETWEEN THE FOUND NORTH QUARTER CORNER AND FOUND NORTHEAST SECTION CORNER OF SAID SECTION 24. NO MONUMENT WAS SET AT THIS LOCATION. THE NORTHEAST SIXTEENTH CORNER WAS ESTABLISHED AT THE INTERSECTION OF THAT LINE CREATED BY SAID ESTABLISHED CENTER-EAST SIXTEENTH CORNER AND SAID CALCULATED SIXTEENTH CORNER BETWEEN SAID SECTIONS 13 AND 24 AND THAT LINE CREATED BETWEEN SAID CENTER-NORTH SIXTEENTH CORNER AND THE FOUND NORTH SIXTEENTH CORNER BETWEEN SAID SECTION 24, TOWNSHIP 30 SOUTH, RANGE 7 WEST, AND SECTION 19, TOWNSHIP 30 SOUTH, RANGE 6 WEST. A MONUMENT WAS SET TO DELINEATE THIS LOCATION AS SHOWN. LINES DENOTED AS MARKED WERE MARKED BY BLAZING TREES ON EACH SIDE OF THE BOUNDARY, SETTING STEEL POSTS EVERY 200 FEET, AND HANGING RED FLAGGING ALONG THE LINE.



BASIS OF BEARING

BASIS: O.C.R.S. (OREGON COORDINATE REFERENCE SYSTEM)
 METHOD: O.R.G.N. (OREGON REAL-TIME GNSS NETWORK)
 ZONE: COTTAGE GROVE - CANYONVILLE
 UNITS: INTERNATIONAL FEET
 DATUM: NAD 83 (2011)
 EPOCH: 2010

LEGEND

- ##### - DENOTES LINE BLAZED, FLAGGED, AND POSTED
- - DENOTES SET 5/8" X 30" IRON ROD WITH 2" ALUMINUM CAP MARKED AS NOTED
- △ - DENOTES CALCULATED POSITION
- - DENOTES FOUND ALUMINUM CAP MARKED "LS2354 1999" PER M129-43
- ⊕ - DENOTES QUARTER CORNER AS NOTED
- ⊗ - DENOTES SECTION CORNER AS NOTED
- ()R1 - DENOTES RECORD PER M129-43
- ()R2 - DENOTES RECORD PER 2008 BLM DEPENDENT RESURVEY
- ()R3 - DENOTES RECORD PER GLO SURVEY, OCT. 1ST, 1872

REGISTERED PROFESSIONAL LAND SURVEYOR

OREGON
 NOVEMBER 10, 2010
 BRENT H. KNAPP
 81116

EXPIRES: 6/30/2025

i.e.
 ENGINEERING

SCALE: 1"=500'
 SHEET 1 OF 2
 JOB NO. 1851-20 1123

CLIENT:
 ROSEBURG RESOURCES CO.
 SPRINGFIELD, OR 97477

809 SE Pine Street
 Roseburg, Oregon 97470
 PHONE (541) 673-0166
 FAX (541) 440-9392
 iemail@ieengineering.com

MAP FILE M182-53A