

PROPERTY SURVEY LOCATED IN THE NE 1/4 OF SECTION 1, TOWNSHIP 21 SOUTH, RANGE 12 WEST, W.M., DOUGLAS COUNTY, OREGON.

FILED
DATE: 8-1-2023 BY: [Signature]
THIS SURVEY CONSISTS OF:
MAP: M182-51
NARRATIVE:
CORNER RPT.:
DOUGLAS COUNTY SURVEYOR

NARRATIVE

THE PURPOSE OF THIS SURVEY WAS TO MARK BOUNDARY LINES FOR RESOURCE MANAGEMENT.
THE PROCEDURE WAS TO LOCATE AND TIE RECORD MONUMENTS PER MAP FILE M79-30 AND M121-68 AND MARKED THE BOUNDARY WITH GLO ORANGE FLAGGING, ORANGE TREE BLAZES AND FIBERGLASS POSTS.
EQUIPMENT USED WAS A NIKON K2 TOTAL STATION WITH TDS RANGER DATA COLLECTOR.
ASSISTING PERSONNEL WERE PATRICK COY, JOHN RONDEAU, AND WILL-B HYATT.

BASIS OF BEARING

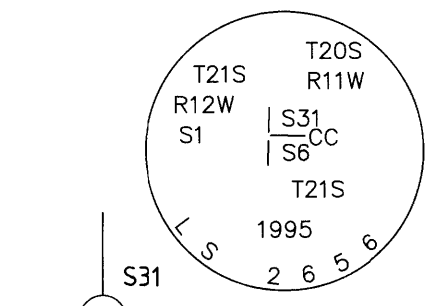
THE BASIS OF BEARING IS ASSUMED PER MAP FILE M121-68

RECORD REFERENCE INFORMATION

MAP FILE M121-68, BY: JOHN C. BENTLEY, DATED: FEBRUARY, 1995.
MAP FILE M78-76, BY: ROBERT B. WARD, DATED: AUGUST, 1979.

LEGEND

- BOUNDARY LINE MARKED WITH GLO ORANGE FLAGGING, ORANGE TREE BLAZES AND FIBER GLASS RODS
- FOUND MONUMENT AS NOTED
- BOUNDARY OF PROPERTY SURVEYED
- APPROXIMATE BOUNDARY OF UNSURVEYED PROPERTIES
- () 1 RECORD PER MAP FILE M121-68
- () 2 RECORD PER MAP FILE M78-76



S1

S6

1995 AMENDED CLOSING CORNER FOR SECTIONS 6 AND 31
FOUND MONUMENT:
A 2" BRASS CAP ON A 2" IRON PIPE WITH CAP MARKED AS SHOWN AND SET PER MAP FILE M121-68.

FOUND B0'S:
A BRASS CAP BEARS N89°29'E 4.97' (MAP FILE M121-68.)

FOUND BT'S:
AN 11" ALDER STUMP, WITH TAG BEARS N71°E 27.7' (MAP FILE M121-68).
A 34" HEMLOCK STUMP, WITH HEALED FACE AND TAG BEARS S39°W 45.3' (MAP FILE M121-68).
A 13" SPRUCE STUMP 4' TALL, WITH NO VISIBLE MARKS BEARS N84°W 28.3' (MAP FILE M121-68).

LAT. AND LONG. PER GARMIN ETREX HAND HELD GPS:
N:43°46'56.9" W:124°03'55.4"

(N00°04'08"E 2364.0211 BASIS OF BEARING
(N00°04'43"E 2364.0812
(N00°04'08"E 2364.40)

S6

S1

1/4 CORNER COMMON TO SECTIONS 1 AND 6
FOUND MONUMENT:
A 2-1/2" BRASS CAP MARKED, 1/4, S1 S6, PLS 497 1979, ON 2" IRON PIPE AS SET PER MAP FILE M79-30. SET FIBERGLASS ROD ALONGSIDE.

FOUND BT'S:
A 20" HEMLOCK STUMP, 3.5' TALL WITH NO VISIBLE MARKS BEARS N59°E 11.7' (N61°E 11.8' PER MAP FILE M141-23).
A 19" FIR STUMP 4.5' TALL WITH HEALED FACE AND TAG BEARS S27°E 27.9' (MAP FILE M141-23).
AN 18" FIR STUMP 6' LONG LAID OVER BEARS S61°W 11.8' (MAP FILE M141-23).
A 16" FIR STUMP 5' TALL WITH HEALED FACE AND TAG BEARS N23°W 11.1' (MAP FILE M141-23).

LAT. AND LONG. PER GARMIN ETREX HAND HELD GPS:
N:43°46'33.5" W:124°03'55.0"



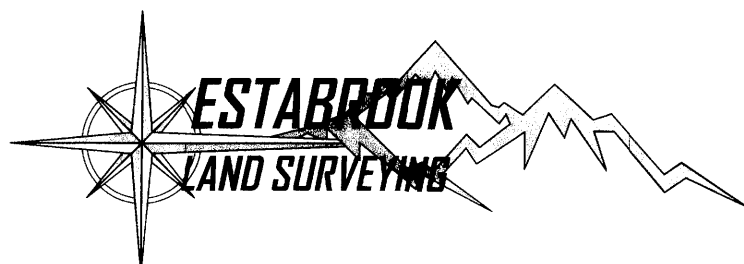
SCALE 1"=400'

REGISTERED
PROFESSIONAL
LAND SURVEYOR

Stephan Stys
OREGON
NOVEMBER 6, 2022
STEPHAN R. STYS
86454PLS

EXPIRES 06/30/24

GENERAL NOTE:
LAT. AND LONG. ARE FROM A GARMIN ETREX HAND HELD
GPS AND DOES NOT PRODUCE SURVEY GRADE COORDINATES.



PO BOX 778
COOS BAY, OR 97420
541-294-6915
WWW.ESTABROOKLANDSURVEYING.COM

PREPARED FOR:
RAYONIER
2990 BROADWAY AVE.
NORTH BEND, OR 97459

DRAWN BY: BAC
CHECKED BY: SRS
JOB NO.: 2023-056
DATE: 7/7/2023
SHEET: 1 OF 1