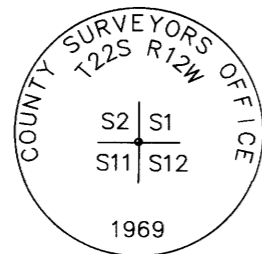


PROPERTY SURVEY LOCATED IN THE NE 1/4, NW 1/4, SW 1/4 AND SE 1/4 OF SECTION 2 AND THE SW 1/4 OF SECTION 1, TOWNSHIP 22 SOUTH, RANGE 12 WEST, W.M., DOUGLAS COUNTY, OREGON.

FILED  
 DATE: 8-1-2023 BY: Dv  
 THIS SURVEY CONSISTS OF:  
 MAP: M182-49A, B  
 NARRATIVE:  
 CORNER RPT.:  
 DOUGLAS COUNTY  
 SURVEYOR

MAP FILE M182-49B



NOTE 1 - PLSS 600600

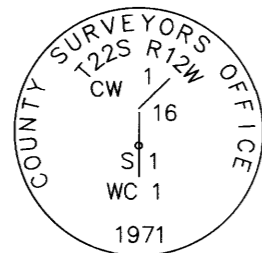
CORNER COMMON TO SECTIONS 1, 2, 11, AND 12

FOUND MONUMENT:  
 A 2 1/2" BRASS CAP ON A 1" IRON PIPE, MARKED AS SHOWN, AS SET PER CS NO. 54/46-1. SET STEEL POST ALONGSIDE CORNER.

FOUND BT:  
 A 33" HEMLOCK, WITH HEALED FACE AND TAG BEARS N68°W 6.5'.  
 (CS NO. 54/46-1)  
 A 31" CEDAR, WITH HEALED FACE AND TAG BEARS S81°E 15.2'.  
 (CS NO. 54/46-1)

NEW BT'S:  
 A 10" HEMLOCK, FACED & SCRIBED "SE S2 BT" WITH X-CHOP AND TAG BEARS N16°W 20.2' TO A SPIKE AT SIDE CENTER.  
 A 21" HEMLOCK, FACED & SCRIBED "SW S1 BT" WITH X-CHOP AND TAG BEARS N3°E 28.8' TO A SPIKE AT SIDE CENTER.

LAT. AND LONG. PER GARMIN ETREX HAND HELD GPS:  
 N: 43°40'58.9" W: 124°05'02.2"



NOTE 2 - PLSS 620631

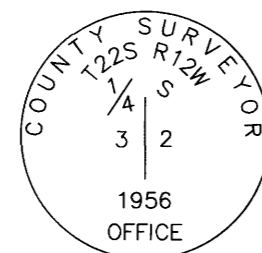
WITNESS CORNER TO THE CENTER WEST 1/16 OF SECTION 1

FOUND MONUMENT:  
 A 2 1/2" BRASS CAP ON A 1" IRON PIPE, MARKED AS SHOWN, AS SET PER MAP FILE M42-27. SET STEEL POST ALONGSIDE WITNESS CORNER. CORNER BEARS NORTH OF RAILROAD TRACKS 26'.

FOUND BO:  
 5/8" IRON ROD BEARS SOUTH 40.3'  
 (MAP FILE M42-27)

NEW BT'S:  
 A 25" FIR, FACED & SCRIBED "XBT" WITH X-CHOP AND TAG BEARS N7°E 19.6' TO A SPIKE AT SIDE CENTER.

LAT. AND LONG. PER GARMIN ETREX HAND HELD GPS:  
 N: 43°41'17.5" W: 124°04'44.9"



NOTE 3 - PLSS 500640

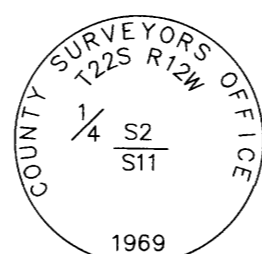
1/4 CORNER COMMON TO SECTIONS 2 AND 3

FOUND MONUMENT:  
 A 2 1/2" BRASS CAP SET ON A 1 1/2" IRON PIPE, MARKED AS SHOWN, AS SET PER MAP FILE M1-17P. SET STEEL POST ALONGSIDE CORNER MONUMENT.

FOUND BT:  
 24" ROTTEN HEMLOCK STUMP, NO VIS MARKS, BEARS S48°E 10.6'  
 (M1-17P)

NEW BT'S:  
 A 17" HEMLOCK, FACED & SCRIBED "E 1/4 S3 BT" WITH X-CHOP AND TAG BEARS N2°W 17.5' TO A SPIKE AT SIDE CENTER.  
 A 14" HEMLOCK, FACED & SCRIBED "W 1/4 S2 BT" WITH X-CHOP AND TAG BEARS N30°E 12.3' TO A SPIKE AT SIDE CENTER.  
 A 11" HEMLOCK, FACED & SCRIBED "W 1/4 S2 BT" WITH X-CHOP AND TAG BEARS S53°E 7.7' TO A SPIKE AT SIDE CENTER.  
 A 8" HEMLOCK, FACED & SCRIBED "E 1/4 S3 BT" WITH X-CHOP AND TAG BEARS S40°W 4.7' TO A SPIKE AT SIDE CENTER.

LAT. AND LONG. PER GARMIN ETREX HAND HELD GPS:  
 N: 43°41'23.9" W: 124°06'13.5"



NOTE 4 - PLSS 540600

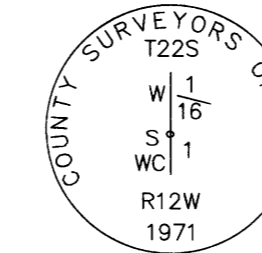
1/4 CORNER COMMON TO SECTIONS 2 AND 11

FOUND MONUMENT:  
 A 2-1/2" BRASS CAP ON A 1" IRON PIPE, MARKED AS SHOWN, AS SET PER MAP FILE M22-71

FOUND BT'S:  
 36" HEMLOCK, WITH A TAG AND HEALED FACE BEARS N76°30'W 19.3'  
 (MAP FILE M22-71)

NEW BT'S:  
 A 21" ALDER, BARK SCRIBED "S 1/4 S2 BT" WITH X-CHOP AND TAG BEARS N24°E 32.6' TO A SPIKE AT SIDE CENTER.  
 A 15" FIR, FACED & SCRIBED "N 1/4 S11 BT" WITH X-CHOP AND TAG BEARS S74°E 43.5' TO A SPIKE AT SIDE CENTER.  
 A 8" ALDER, BARK SCRIBED "N 1/4 S11 BT" WITH X-CHOP AND TAG BEARS S30°W 14.1' TO A SPIKE AT SIDE CENTER.

LAT. AND LONG. PER GARMIN ETREX HAND HELD GPS:  
 N: 43°40'58.4" W: 124°05'37.4"



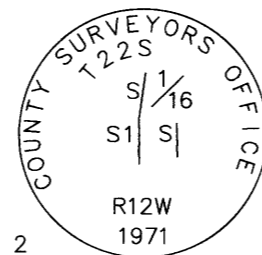
NOTE 5 - PLSS 620604

WITNESS CORNER TO THE WEST 1/16 COMMON TO SECTIONS 1 AND 12

FOUND MONUMENT:  
 A 2 1/2" BRASS CAP ON A 1" IRON PIPE, MARKED AS SHOWN, AS SET PER MAP FILE M42-27. SET STEEL POST ALONGSIDE WITNESS CORNER.

NEW BT'S:  
 A 31" SPRUCE, FACED & SCRIBED "XBT" WITH X-CHOP AND TAG BEARS N59°W 8.1' TO A SPIKE AT SIDE CENTER.  
 A 28" HEMLOCK, FACED & SCRIBED "XBT" WITH X-CHOP AND TAG BEARS S28°W 29.6' TO A SPIKE AT SIDE CENTER.

LAT. AND LONG. PER GARMIN ETREX HAND HELD GPS:  
 N: 43°41'02.2" W: 124°04'44.3"



NOTE 6 - PLSS 600620

SOUTH 1/16 CORNER COMMON TO SECTIONS 1 AND 2

FOUND MONUMENT:  
 A 2 1/2" BRASS CAP ON A 1" IRON PIPE, MARKED AS SHOWN, AS SET PER MAP FILE M42-27. SET STEEL POST ALONGSIDE MONUMENT.

NEW BT'S:  
 A 12" HEMLOCK, FACED & SCRIBED "S 1/16 S1 BT" WITH X-CHOP AND TAG BEARS N83°E 7.3' TO A SPIKE AT SIDE CENTER.  
 A 13" HEMLOCK, FACED & SCRIBED "S 1/16 S2 BT" WITH X-CHOP AND TAG BEARS S16°W 8.6' TO A SPIKE AT SIDE CENTER.

LAT. AND LONG. PER GARMIN ETREX HAND HELD GPS:  
 N: 43°41'12.1" W: 124°05'01.5"

MARKED AS SHOWN



NOTE 7 - PLSS 500600

CORNER COMMON TO SECTIONS 2, 3, 10 AND 11

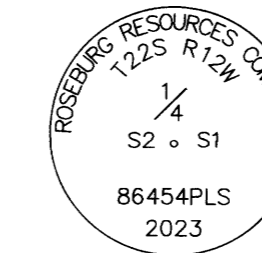
SET MONUMENT:  
 A 2-1/2" ALUMINUM CAP ON A 5/8"x40" IRON ROD, MARKED AS SHOWN. IT APPEARED THAT A LANDSLIDE TOOK OUT THE 1-1/2" IRON PIPE AND BRASS CAP AS SET PER MAP FILE M1-17.

FOUND BT:  
 WE DID NOT FIND ANY ORIGINAL BT'S  
 A ROTTED 32" HEMLOCK STUMP, NO VIS MARKS, BEARS N38°W 48.5'.  
 (MAP FILE M22-71) (NOT COMPLETELY CONVINCED THIS WAS THE BT).  
 A 38" CEDAR SNAG, WITH OPEN FACE BEARS S14°E 83.2'.  
 (MAP FILE M22-71)

NEW BT'S:  
 A 6" FIR, FACED & SCRIBED "SE S3 BT" WITH X-CHOP AND TAG BEARS N24°W 10.1' TO A SPIKE AT SIDE CENTER.  
 A 6" FIR, FACED & SCRIBED "NW S11 BT" WITH X-CHOP AND TAG BEARS S30°E 8.8' TO A SPIKE AT SIDE CENTER.  
 A 6" FIR, FACED & SCRIBED "NE S10 BT" WITH X-CHOP AND TAG BEARS S52°W 2.4' TO A SPIKE AT SIDE CENTER.

NEW BO:  
 SET STEEL POST BEARS EAST 1.5'

LAT. AND LONG. PER GARMIN ETREX HAND HELD GPS:  
 N: 43°40'58.9" W: 124°06'12.8"



NOTE 8 - PLSS 600640

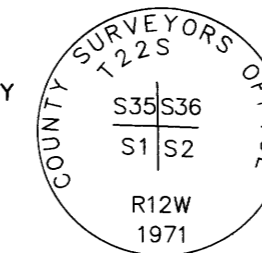
1/4 CORNER COMMON TO SECTIONS 2 AND 1

SET MONUMENT:  
 A 2-1/2" ALUMINUM CAP ON A 5/8"x40" IRON ROD, MARKED AS SHOWN. AFTER A DILIGENT SEARCH, WE COULD NOT FIND THE 1/2" IRON PIPE AS SET PER MAP FILE M-22/71. I USED THE BEARING AND DISTANCES FROM THE BT TAGS ON THE BT'S WITH AN UNKNOWN RECORD.

FOUND BT:  
 A 38" FIR STUMP, NO VIS MARKS, BEARS S46°E 21.4' (S45°E 19.3' PER CS 54/46-2).  
 A 38" SPRUCE, WITH HEALED FACE BEARS S68°E 32.6' (UNKNOWN RECORD).  
 A 30" HEMLOCK, WITH HEALED FACE BEARS N20°E 10.8' (UNKNOWN RECORD).

NEW BT'S:  
 A 28" HEMLOCK, FACED & SCRIBED "E 1/4 S2 BT" WITH X-CHOP AND TAG BEARS S80°W 5.6' TO A SPIKE AT SIDE CENTER.  
 AN 18" HEMLOCK, FACED & SCRIBED "W 1/4 S1 BT" WITH X-CHOP AND TAG BEARS N55°E 44.3' TO A SPIKE AT SIDE CENTER.

MARKED INCORRECTLY



NOTE 9 - PLSS 600700

CORNER COMMON TO SECTIONS 1, 2, 35, AND 36

FOUND MONUMENT:  
 A 2 1/2" BRASS CAP ON A 1" IRON PIPE, MARKED AS SHOWN, AS SET PER MAP FILE M42-27

FOUND BT:  
 A 26" FIR STUMP, WITH NO VISIBLE MARKS AND TAG BEARS N35°W 30.3'.  
 (MAP FILE M42-27)  
 A 48" CEDAR STUMP, W/ HEALED FACE AND TAG BEARS S66°E 47.6'.  
 (MAP FILE M42-27)



STEPHAN R. STYS  
 86454PLS

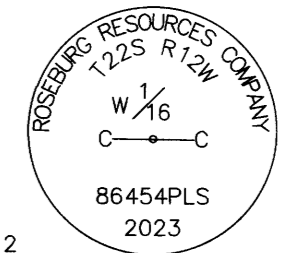
EXPIRES 06/30/24

NOTE 10 - PLSS 520640

CENTER WEST 1/16 CORNER OF SECTION 2

SET 2 1/2" ALUMINUM CAP ON 5/8" IRON ROD, MARKED AS SHOWN

NEW BO:  
 1" IRON PIPE BEARS N62°E 7.0'



NOTE 11

SET 5/8" X 30" IRON ROD ON EDGE OF MARSH, WITH PLASTIC CAP MARKED "STYS 86454PLS"

NEW BO:  
 A 1" IRON ROD BEARS N59°43'09"W 3.4'

NOTE 12

FND. 2 EA 5/8" IRON ROD, AS NOTED PER. PARTITION PLAT NO. 1996-0080.

NOTE 13

FND. 2 1/2" BRASS CAP ON 1" IRON PIPE, AS NOTED PER. MAP FILE NO. M42-27.

NOTE 14

SET 5/8" X 30" IRON ROD, WITH PLASTIC CAP MARKED "STYS 86454PLS"

NEW BT:  
 A 15" ALDER, BARK SCRIBED "PL BT" WITH X-CHOP AND TAG BEARS S81°W 25.5' TO A SPIKE AT SIDE CENTER.

NEW BO:  
 A STEEL U-POST BEARS SOUTH 1.5'

NOTE 15

SET 5/8" X 30" IRON ROD, WITH PLASTIC CAP MARKED "STYS 86454PLS"

NEW BT:  
 A 10" HEMLOCK, FACED & SCRIBED "PL BT" WITH X-CHOP AND TAG BEARS S53°E 12.9' TO A SPIKE AT SIDE CENTER.  
 A 17" FIR, FACED & SCRIBED "PL BT" WITH X-CHOP AND TAG BEARS S65°W 9.5' TO A SPIKE AT SIDE CENTER.

GENERAL NOTE:  
 LAT. AND LONG. ARE FROM A GARMIN ETREX HAND HELD GPS AND DOES NOT PRODUCE SURVEY GRADE COORDINATES.

ALUMINUM BEARING TREE TAGS WERE USED.

DRAWN BY: BAC	DATE: 5/26/2023
CHECKED BY: SRS	DRAWING NO.: SCHOSCOTT
JOB NO.: 2022-103	SHEET 2 OF 2

MAP FILE M182-49B