

PROPERTY SURVEY LOCATED IN THE NE 1/4, NW 1/4, SW 1/4 AND SE 1/4 OF SECTION 2 AND THE SW 1/4 OF SECTION 1, TOWNSHIP 22 SOUTH, RANGE 12 WEST, W.M., DOUGLAS COUNTY, OREGON.

FILED
 DATE: 8-1-2023 BY: DS
 THIS SURVEY CONSISTS OF:
 MAP: M182-103 A&B
 NARRATIVE:
 CORNER RPT.:
 DOUGLAS COUNTY
 SURVEYOR

NARRATIVE

THE PURPOSE OF THIS SURVEY WAS TO LOCATE AND MARK BOUNDARY LINES FOR RESOURCE MANAGEMENT PURPOSES.

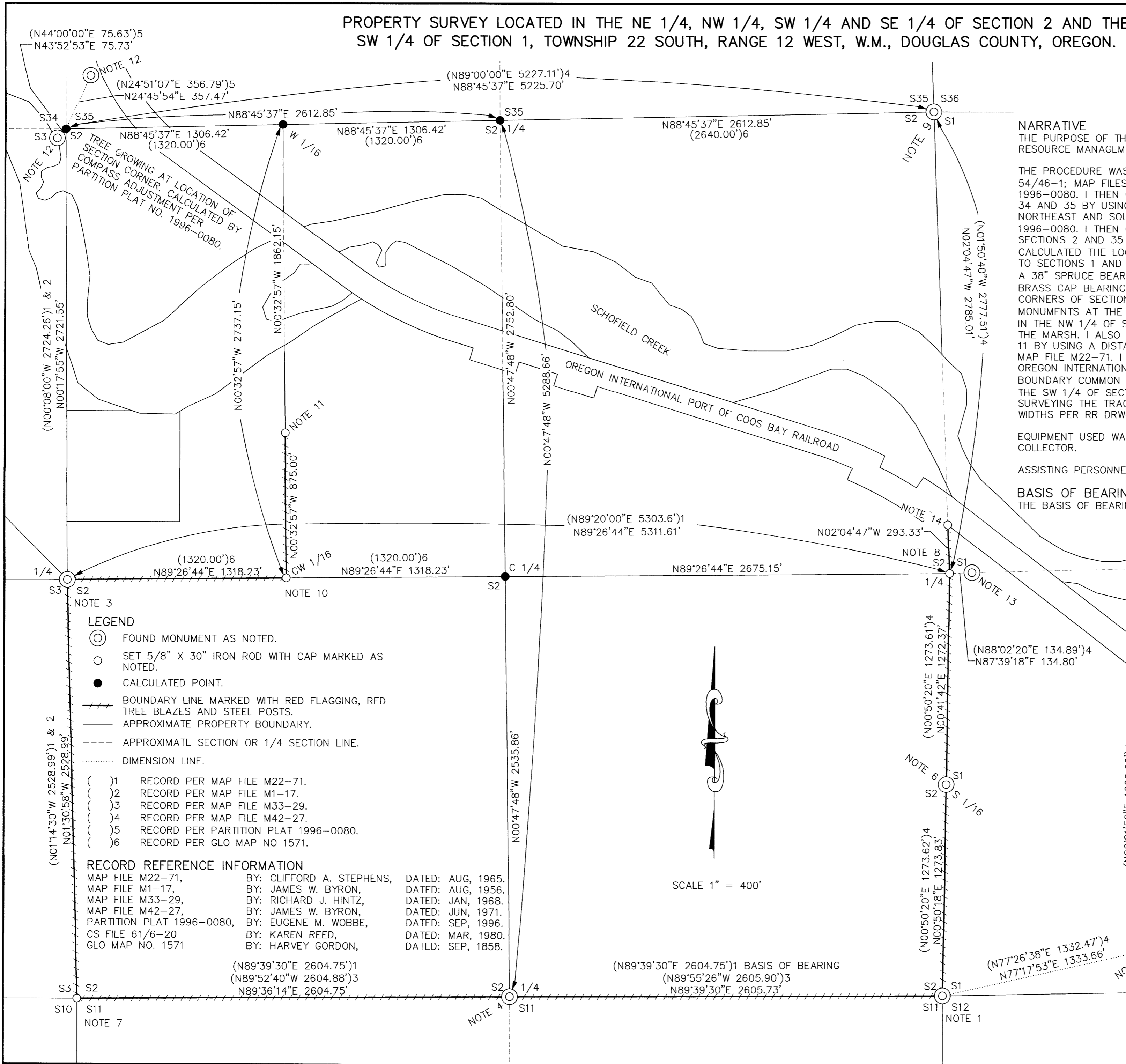
THE PROCEDURE WAS TO LOCATE AND TIE RECORD MONUMENTS PER CS FILE 54/46-1; MAP FILES M1-17, M22-71 AND M42-27 AND PARTITION PLAT 1996-0080. I THEN CALCULATED THE SECTION CORNER COMMON TO SECTIONS 2, 3, 34 AND 35 BY USING A COMPASS ADJUSTMENT WITH TWO CORNERS FOUND TO THE NORTHEAST AND SOUTHEAST OF THE SECTION CORNER PER PARTITION PLAT 1996-0080. I THEN CALCULATED THE LOCATION OF THE 1/4 CORNER COMMON TO SECTIONS 2 AND 35 AT A MIDPOINT BETWEEN THE SECTION CORNERS. I THEN CALCULATED THE LOCATION AND SET A MONUMENT AT THE 1/4 CORNER COMMON TO SECTIONS 1 AND 2 BY BALANCING THE RECORD BEARINGS AND DISTANCES FROM A 38" SPRUCE BEARING S68°E 32.6', 30" HEMLOCK BEARING N20°E 10.8' AND A BRASS CAP BEARING N88°02'20"E 134.89 PER MAP FILE 42-27. WITH THE 1/4 CORNERS OF SECTION 2 KNOWN, I WAS ABLE TO SUBDIVIDE THE SECTION AND SET MONUMENTS AT THE THE CW 1/16 CORNER AND ON THE NORTH-SOUTH 1/16 LINE IN THE NW 1/4 OF SECTION 2. THE POINT ONLINE WAS SET NEAR THE EDGE OF THE MARSH. I ALSO SET THE SECTION CORNER COMMON TO SECTIONS 2, 3, 10 AND 11 BY USING A DISTANCE-DISTANCE INTERSECT HOLDING RECORD DISTANCES PER MAP FILE M22-71. I ALSO SET MONUMENTS ON THE SOUTHERLY BOUNDARY OF THE OREGON INTERNATIONAL PORT OF COOS BAY RAILROAD WHERE IT INTERSECTS THE BOUNDARY COMMON TO SECTIONS 1 AND 2 AND THE NORTH-SOUTH 1/16 LINE IN THE SW 1/4 OF SECTION 1. THE BOUNDARY OF THE RAILROAD WAS DETERMINED BY SURVEYING THE TRACKS, CALCULATING THE CENTERLINE AND HOLDING RAILROAD WIDTHS PER RR DRWG 2-25.

EQUIPMENT USED WAS A NIKON K2 TOTAL STATION WITH TDS RANGER DATA COLLECTOR.

ASSISTING PERSONNEL WERE BLUE JAMES, JACK JARRETT AND DANIEL TIEMISSEN.

BASIS OF BEARING

THE BASIS OF BEARING IS ASSUMED PER MAP FILE M22-71.



LEGEND

- FOUND MONUMENT AS NOTED.
- SET 5/8" X 30" IRON ROD WITH CAP MARKED AS NOTED.
- CALCULATED POINT.
- BOUNDARY LINE MARKED WITH RED FLAGGING, RED TREE BLAZES AND STEEL POSTS.
- APPROXIMATE PROPERTY BOUNDARY.
- APPROXIMATE SECTION OR 1/4 SECTION LINE.
- DIMENSION LINE.

- () 1 RECORD PER MAP FILE M22-71.
- () 2 RECORD PER MAP FILE M1-17.
- () 3 RECORD PER MAP FILE M33-29.
- () 4 RECORD PER MAP FILE M42-27.
- () 5 RECORD PER PARTITION PLAT 1996-0080.
- () 6 RECORD PER GLO MAP NO 1571.

RECORD REFERENCE INFORMATION

MAP FILE M22-71, BY: CLIFFORD A. STEPHENS, DATED: AUG, 1965.
 MAP FILE M1-17, BY: JAMES W. BYRON, DATED: AUG, 1956.
 MAP FILE M33-29, BY: RICHARD J. HINTZ, DATED: JAN, 1968.
 MAP FILE M42-27, BY: JAMES W. BYRON, DATED: JUN, 1971.
 PARTITION PLAT 1996-0080, BY: EUGENE M. WOBBE, DATED: SEP, 1996.
 CS FILE 61/6-20, BY: KAREN REED, DATED: MAR, 1980.
 GLO MAP NO. 1571, BY: HARVEY GORDON, DATED: SEP, 1858.

(N89°39'30"E 2604.75')1
 (N89°52'40"W 2604.88')3
 (N89°36'14"E 2604.75')
 (N89°39'30"E 2604.75')1 BASIS OF BEARING
 (N89°55'26"W 2605.90')3
 (N89°39'30"E 2605.73')

SCALE 1" = 400'

SURVEY FOR: ROSEBURG RESOURCES CO.
 PO BOX 1088
 ROSEBURG, OR 97470
 SURVEY BY: ESTABROOK LAND SURVEYING INC.
 PO BOX 778
 COOS BAY, OR 97420

REGISTERED
 PROFESSIONAL
 LAND SURVEYOR

Stephan R. Stys
 OREGON
 NOVEMBER 8, 2002
 STEPHAN R. STYS
 86454PLS

EXPIRES 06/30/24

DRAWN BY: BAC	DATE: 5/26/2023
CHECKED BY: SRS	DRAWING NO.: SCHOSCOTT
JOB NO.: 2022-103	SHEET 1 OF 2

MAP FILE M182-103 A

MAP FILE M182-103 A