

**NARRATIVE:**

THE PURPOSE OF THIS SURVEY IS TO MARK PROPERTY LINES FOR THE LONE ROCK TIMBERLAND CO. FOREST LAND TRACT IN SECTION 23, TOWNSHIP 28 SOUTH RANGE 8 WEST W.M. FOR TIMBER MANAGEMENT PURPOSES. WE BEGAN THIS SURVEY BY SEARCHING FOR BAUGHMAN'S QUARTER CORNER FOR SECTIONS 23 AND 26 AND ITS BEARING TREES FROM BAUGHMAN'S SURVEY M70-6 AND BLM BEARING TREES FROM BLM LINE NOTES PAGE 17388-17389 FILED IN THE DOUGLAS COUNTY SURVEYORS OFFICE. WE LOCATED BAUGHMAN'S IRON PIPE AND BRASS CAP LEANING SIGNIFICANTLY TO THE NORTHWEST IN A LANDSLIDE AREA NEAR AN OLD LOGGING SKID ROAD. WE MADE A DILIGENT SEARCH FOR THE RECORD BEARING TREES IN THE VICINITY OF BAUGHMAN'S QUARTER CORNER AND LOCATED ONE BEARING TREE TAG LYING NEAR A BADLY ROTTED DOUGLAS-FIR SNAG. WE OPENED THE SNAG BUT COULD FIND NO EVIDENCE OF SCRIBING. WE SEARCHED FOR BUT DID NOT FIND ANY OTHER EVIDENCE OF THE OTHER BEARING TREES FROM EITHER THE BAUGHMAN SURVEY OR THE BLM LINE NOTES. WE MADE A DILIGENT SEARCH FOR HOLT'S CENTER NORTH SOUTH 1/64TH AND FOUND BOTH BEARING TREES AS PER M70-9 BUT COULD NOT LOCATE THE MONUMENT. WE ALSO LOCATED A 5/8 INCH IRON ROD WITH NO CAP (CORNER 4) AND 2 BEARING TREES AT OR NEAR THE HOLT CENTER SOUTH 1/16TH CORNER. WE THEN COMMENCED A RANDOM TRAVERSE FROM GPS AND RTK CONTROL POINTS IN A ROAD NEAR THE FOUND BAUGHMAN QUARTER CORNER MONUMENT, NORTH THROUGH THE FOUND 5/8 INCH IRON ROD (CORNER 4), TO THE CENTER QUARTER OF SECTION 23 (CORNER 5), AN ALUMINUM CAP AND PIPE SET IN THE 1984 APPROVED BLM DEPENDENT RESURVEY AND SUBDIVISION OF SECTIONS 21 AND 23. WE THEN CLOSED THIS TRAVERSE WITH A DIRECT GPS AND RTK OBSERVATION ON THE CENTER QUARTER MONUMENT. WE THEN RAN A RANDOM TRAVERSE FROM OUR GPS AND RTK CONTROL NEAR THE FOUND BAUGHMAN QUARTER CORNER MONUMENT, EASTERLY TO THE SECTION CORNER OF SECTIONS 23, 24, 25, AND 26 (CORNER 1) AND CLOSED IT WITH GPS AND RTK OBSERVATIONS. WE THEN RAN A RANDOM TRAVERSE ALONG AN EXISTING ROAD SOUTHERLY AND WESTERLY FROM OUR GPS AND RTK CONTROL NEAR THE FOUND BAUGHMAN QUARTER CORNER MONUMENT THROUGH THE SECTION CORNER OF SECTIONS 22, 23, 26, AND 27 (CORNER 3) AND CLOSED IT WITH GPS AND RTK OBSERVATIONS IN A ROAD JUNCTION NEAR THE SECTION CORNER. WE ALSO MADE GPS AND RTK OBSERVATIONS ON SEVERAL OF OUR RANDOM TRAVERSE POINTS ON THESE TRAVERSES. WE THEN PERFORMED A LEAST SQUARES NETWORK ADJUSTMENT OF OUR GPS AND RTK OBSERVATIONS AND TOTAL STATION TRAVERSES IN TRIMBLE BUSINESS CENTER. FINALLY, WE COMPUTED A PROPER PROPORTION OF THE QUARTER CORNER OF SECTIONS 23 AND 26, BETWEEN THE TWO FOUND SECTION CORNERS. WE FOUND THAT BAUGHMAN'S MONUMENT AT THE QUARTER CORNER BETWEEN SECTIONS 23 AND 26 LIES NORTHWESTERLY IN EXCESS OF 20 FEET, FROM OUR COMPUTED PROPORTIONED POSITION OF THE QUARTER CORNER. THIS INFORMATION COMBINED WITH OUR TIES TO THE BLM'S CENTER QUARTER AND SECTION CORNERS, THE LACK OF BEARING TREE EVIDENCE NEAR THE FOUND BAUGHMAN QUARTER CORNER MONUMENT, AND OUR OBSERVATIONS OF THE AREA IN WHICH THE FOUND MONUMENT LIES, INDICATE THAT THE FOUND BAUGHMAN QUARTER CORNER MONUMENT AND ITS ACCESSORY BEARING TREES SEEM TO HAVE MOVED OR BEEN DESTROYED BY BOTH THE LOGGING SKID TRAIL CONSTRUCTION AND A SLOW MOVING LANDSLIDE. THEREFORE, WE SET A NEW QUARTER CORNER MONUMENT (CORNER 2) AT PROPER PROPORTIONED DISTANCE BETWEEN THE TWO FOUND SECTION CORNERS (CORNER 1 AND CORNER 3). OUR MEASURED DISTANCE TO THE FOUND IRON ROD (CORNER 4) AT OR NEAR THE HOLT CENTER SOUTH 1/16TH CORNER DOES NOT MATCH THE M70-9 RECORD DISTANCE BY OVER 4 FEET FROM OUR PROPORTIONED QUARTER CORNER. WE ALSO COMPUTED THE CENTER NORTH SOUTH 1/64TH CORNER USING RECORD DISTANCE INTERSECTION OF HOLT'S M70-9 RECORD BEARING TREES AND FOUND THE DISTANCE BETWEEN THE COMPUTED CENTER NORTH SOUTH 1/64TH AND THE FOUND IRON ROD WOULD BE OVER 3.5 FEET DIFFERENT THAN HOLT'S RECORD IN M70-9. WE FOUND THE 5/8 INCH IRON ROD AS PER M70-9 BUT HOLT'S ALUMINUM CAP IS MISSING. THESE OBSERVATIONS INDICATE TO US THAT HOLT'S CENTER SOUTH 1/16TH MAY ALSO HAVE MOVED OVER TIME. ADDITIONALLY, THE BLM RESET THE CENTER QUARTER OF SECTION 23 IN THE 1984 APPROVED DEPENDENT RESURVEY (NOW AN ACCEPTED AND UTILIZED CORNER, DCSO FILED SURVEYS M138-50 AND M179-49) AT A DIFFERENT LOCATION THAN BAUGHMAN'S CENTER QUARTER WHICH WAS USED BY HOLT IN SURVEY M70-9 TO ESTABLISH THE CENTER SOUTH 1/16TH. THE SOUTH HALF OF THE NORTH-SOUTH CENTERLINE OF SECTION 23 IS A PROPERTY LINE BETWEEN FEDERAL INTEREST LANDS AND PRIVATE LANDS AND THIS COMBINED WITH THE PREVIOUS OBSERVATIONS LEAD US TO NOT UTILIZE THE FOUND 5/8 INCH IRON ROD TO CONTROL THE PROPERTY LINE BETWEEN LONE ROCK TIMBERLAND CO. AND FEDERAL INTEREST BLM PROPERTY. THEREFORE, WE MARK THE PROPERTY LINE BETWEEN OUR PROPORTIONED QUARTER CORNER OF SECTION 23 AND 26 AND THE FOUND BLM CENTER QUARTER OF SECTION 23. PROPERTY LINES SHOWN HEREON AS MARKED WERE QUARTER BLAZED AND PAINTED WITH RED PAINT, RED PROPERTY LINE RIBBON AND FLORESCENT BLUE RIBBON WERE PLACED ON TRUE PROPERTY LINE AND ALUMINUM PROPERTY LINE TAGS WERE PLACED AT INTERVALS ALONG THE LINES. 5 1/2 FOOT TALL STEEL GALVANIZED POST WERE PLACED ON TRUE LINE BETWEEN THE ROSEBURG RESOURCES AND LONE ROCK PROPERTIES (CORNER 1 TO CORNER 2). BEARING TREES WERE SCRIBED AT ROOT CROWN WITH DISTANCES MEASURED TO AN ALUMINUM NAIL AT SIDE CENTER AND BEARINGS WERE COMPUTED BY TURNING HORIZONTAL ANGLES FROM TRAVERSE CONTROL POINTS TO AN ALUMINUM NAIL IN FACE CENTER. THIS SURVEY WAS CONDUCTED USING A TRIMBLE C5 TOTAL STATION, TRIMBLE R10 AND TRIMBLE R12I GPS AND RTK RECEIVERS WITH BRETT RAGON, IGNACIO ROMAN, TREVOR CLEMO, AND WESTON ADDINGTON ASSISTING ME.

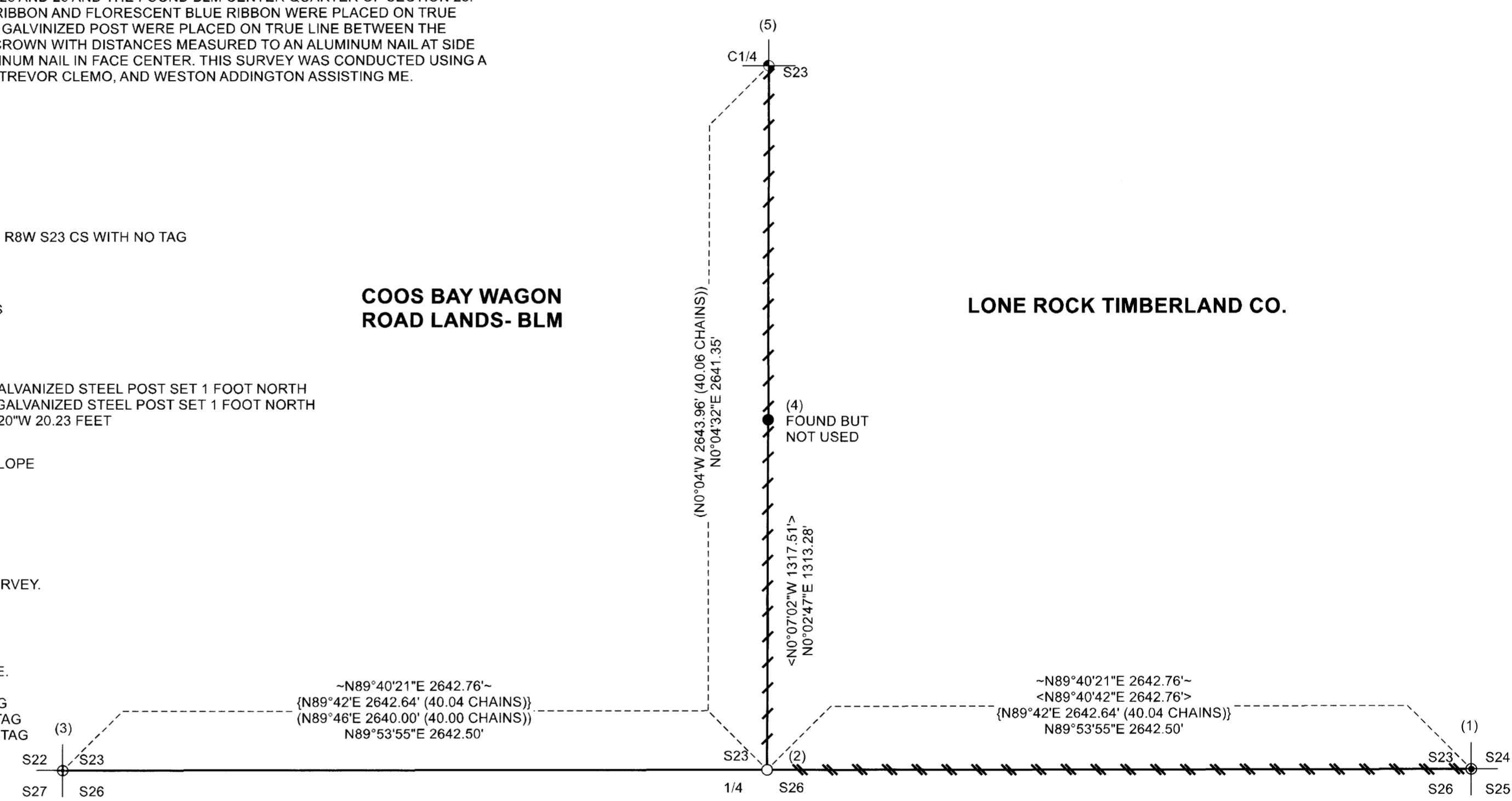
**CORNER INFORMATION**

- SECTION CORNER OF SECTION 23, 24, 25, AND 26, T28S R8W (PLSS 600300)  
FOUND 1924 GLO BRASS CAP MARKED T28S R8W S23, S24, S25, S26 AS PER BLM RESURVEY JELLEY 1975 VOL. 38 PAGE 15566  
THE TOP OF THE MONUMENT IS FLUSH WITH GROUND AND WE SET A GALVANIZED STEEL POST 1 FOOT NORTH  
--34" DOUGLAS-FIR BEARS S45 3/4"E 13.9 FEET (RECORD S51 1/2"E 22 LKS) WITH WELL HEALED FACE AND TAG  
--34" WHITE FIR BEARS S35"E 22.5 FEET (RECORD S31 3/4" 34 1/2 LKS) WITH WELL HEALED FACE AND BLM TAG  
--34" WHITE FIR BEARS S37"W 36.8 FEET (RECORD S39"W 56 LKS) WITH WELL HEALED FACE AND BLM TAG  
--19" X 6" TALL DOUGLAS-FIR ROTTEN STUMP BEARS N52"W 28.3 FEET (RECORD N49 3/4"W 43 LKS). VISABLE SCRIBE READS T28S R8W S23 CS WITH NO TAG  
--NEW 12" DOUGLAS-FIR BEARS N33 1/4"W 11.6 FEET SCRIBED S23 BT AND TAGGED  
--NEW 14" WHITE FIR BEARS N70 1/2"E 13.0 FEET SCRIBED S24 BT AND TAGGED
- QUARTER CORNER BETWEEN SECTION 23 AND 26 (PLSS 540300)  
WE SET THE QUARTER CORNER BETWEEN SECTIONS 23 AND 26. THE 2 1/2" ALUMINUM CAP IS MARKED LONE ROCK TIMBER T28S R8W S23 S26 1/4 2023 85006PLS ON A 5/8" X 60" IRON ROD. THE TOP OF THE CAP IS 0.25 FEET ABOVE GROUND. WE SET A GALVANIZED IRON POST 1 FOOT NORTH.  
--NEW 14" DOUGLAS-FIR BEARS S47"W 26.1 FEET SCRIBED 1/4 S26 BT AND TAGGED  
--NEW 13" DOUGLAS-FIR BEARS N86 1/4"E 18.9 FEET SCRIBED 1/4 S23 BT AND TAGGED  
--5/8" X 40" IRON ROD WITH ORANGE PLASTIC CAP MARKED LONE ROCK TIMBER 85006PLS BEARS S6°01'55"W 41.93 FEET WITH GALVANIZED STEEL POST SET 1 FOOT NORTH  
--5/8" X 40" IRON ROD WITH ORANGE PLASTIC CAP MARKED LONE ROCK TIMBER 85006PLS BEARS N61°32'17"W 47.29 FEET WITH GALVANIZED STEEL POST SET 1 FOOT NORTH  
--FOUND BAUGHMAN'S BRASS CAP AND IRON PIPE LEANING OUT OF POSITION. WE STRAIGHTENED AT POSITION. BEARS N31°08'20"W 20.23 FEET
- SECTION CORNER FOR SECTIONS 22, 23, 26, AND 27 (PLSS 500300)  
WE FOUND 1957 DCSO BRASS CAP AND IRON PIPE. THE TOP OF THE CAP IS 1.2 FEET ABOVE GROUND ON STEEP EAST FACING SLOPE  
WE SET GALVANIZED STEEL POST 1 FOOT NORTH  
--34" CEDAR BEARS N18 1/4"E 17.9 FEET (RECORD N18"E 26 LKS) WELL HEALED FACE AND BLM TAG  
--NEW 35" DOUGLAS-FIR BEARS S31 1/2"E 16.9 FEET SCRIBED T28S R8W S26 BT AND TAGGED  
--36" DOUGLAS-FIR BEARS S89 1/2"W 45.4 FEET (RECORD N89 1/2"W 69 LKS) WELL HEALED FACE AND BLM TAG  
--33" DOUGLAS-FIR BEARS S54 1/4"W 36.4 FEET (RECORD S55"W 55 LKS) WELL HEALED FACE AND BLM TAG
- HOLT CENTER SOUTH SIXTEENTH (PLSS 500320)  
FOUND HOLT'S 5/8" IRON ROD WITH THE CAP REMOVED. THE CORNER WAS FOUND OUT OF POSITION AND NOT USED IN THIS SURVEY.  
THE TOP OF THE ROD IS 0.3 FEET ABOVE GROUND. WE SET A GALVANIZED STEEL POST EAST 0.7 FEET ON TRUE LINE.  
--19" INCENSE CEDAR BEARS S22 1/4"W 23.7 FEET <RECORD S21"W 24.6"> WITH WELL HEALED FACE AND TAG  
--22" DOUGLAS-FIR BEARS N26 1/2"E 24.4 FEET <RECORD N28"E 23.9"> WITH WELL HEALED FACE AND BLM TAG
- CENTER QUARTER OF SECTION 23 (PLSS 540340)  
FOUND 1983 BLM 2 1/2" ALUMINUM CAP. THE TOP OF THE CAP IS 0.15 FEET ABOVE GROUND ON THE SOUTH EDGE OF FENCE LINE.  
--16" WHITE FIR SNAG FOUND AS PER SMALLLEY'S RECORD \*\*N38 1/4"W 13.2 FEET\*\* WITH WELL HEALED FACE AND BLM TAG  
--13" X 10" TALL WHITE FIR SNAG FOUND AS PER SMALLLEY'S RECORD \*\*N15"W 11.1 FEET\*\* WITH WELL HEALED FACE AND BLM TAG  
--18" X 5" TALL DOUGLAS-FIR STUMP FOUND AS PER SMALLLEY'S RECORD \*\*S8"E 16.2 FEET\*\* WITH WELL HEALED FACE AND BLM TAG  
--16" X 5" TALL WHITE FIR STUMP FOUND AS PER SMALLLEY'S RECORD \*\*S35 1/2"E 22.8 FEET\*\* WITH WELL HEALED FACE AND BLM TAG

**MAP OF SURVEY**

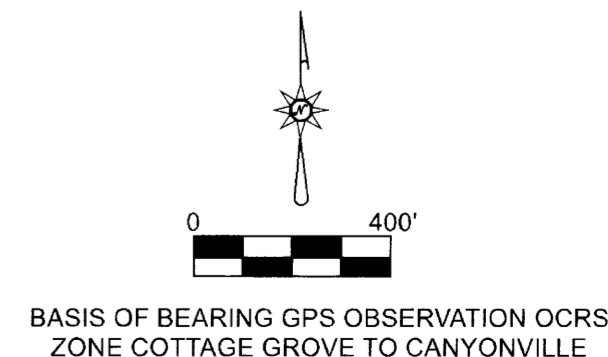
SOUTH 1/2 OF SECTION 23, TOWNSHP 28 SOUTH, RANGE 8 WEST W.M.  
SURVEY FOR: LONE ROCK TIMBERLAND CO.  
P.O. BOX 1127 ROSEBURG, OREGON 97470  
SURVEY BY: LONE ROCK TIMBER MANAGEMENT COMPANY  
P.O. BOX 1127 ROSEBURG, OREGON 97470  
APRIL 2023 TRACT: MELIUS

FILED  
Date: 5-15-2023 By: DN  
This survey consists of:  
Map: M182-25  
Narrative: \_\_\_\_\_  
Corner Ref: \_\_\_\_\_  
DOUGLAS COUNTY  
SURVEYOR



LEGEND	
●	FOUND 1924 GLO BRASS CAP AS NOTED
⊕	FOUND 1957 DOUGLAS COUNTY SURVEYOR BRASS CAP AS NOTED
⊙	FOUND 1983 BLM ALUMINUM CAP AS NOTED
●	FOUND 5/8" IRON ROD AS PER 1978 HOLT SURVEY M70-9 (FOUND BUT NOT USED)
○	SET 5/8" X 60" IRON ROD WITH 2 1/2" ALUMINUM CAP MARKED LONE ROCK TIMBER T28S R8W 1/4 S23 S26 2023 85006 PLS
=====	PROPERTY LINE SURVEYED, BLAZED, PAINTED, TAGGED, POSTED WITH 5 1/2 FOOT TALL GALVANIZED STEEL POSTS AND FLAGGED WITH RED PROPERTY LINE AND FLOURESCENT BLUE RIBBON
-----	PROPERTY LINE SURVEYED, BLAZED, PAINTED, TAGGED, AND FLAGGED WITH RED PROPERTY LINE AND FLOURESCENT BLUE RIBBON
---	LINES SURVEYED BUT NOT MARKED
~ ~	RECORD PER BAUGHMAN REVISED 1978 SURVEY M70-6 FILED IN THE DOUGLAS COUNTY SURVEYOR'S OFFICE
< >	RECORD PER HOLT 1978 SURVEY M70-9 FILED IN THE DOUGLAS COUNTY SURVEYOR'S OFFICE
{ }	RECORD PER BLM 1978 SURVEY
( )	RECORD PER BLM 1984 DEPENDENT RESURVEY AND SUBDIVISION OF SECTION 21 AND 23
++ ++	RECORD PER 1875 ORIGINAL GLO SURVEY
** **	RECORD PER SMALLLEY 2001 M138-50 FILED IN DOUGLAS COUNTY SURVEYOR'S OFFICE FOR BLM CENTER 1/4 BEARING TREES ONLY

REGISTERED  
PROFESSIONAL  
LAND SURVEYOR  
*Daniel E. Saily*  
OREGON  
NOVEMBER 10, 2020  
DANIEL E. SAILY  
85006  
EXPIRES: 6/30/2024



MAP FILE M182-25

MAP FILE M182-25