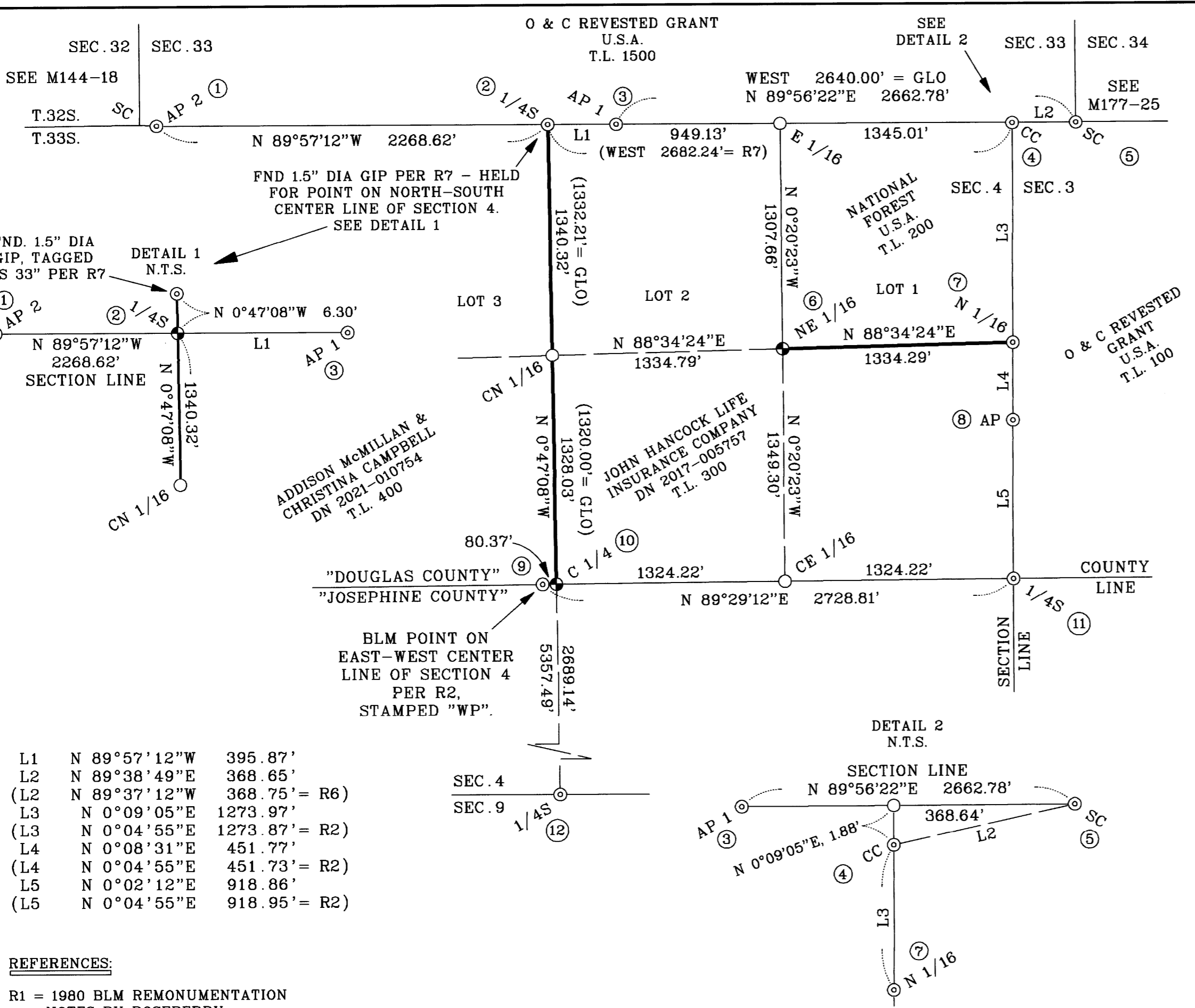


MAP FILE M181-58

FILED  
Date: 1-3-2023 By: [Signature]  
This survey consists of:  
Map: M181-58  
Narrative:  
Corner Rpt:  
DOUGLAS COUNTY SURVEYOR



L1	N 89°57'12"W	395.87'
L2	N 89°38'49"E	368.65'
(L2)	N 89°37'12"W	368.75' = R6)
L3	N 0°09'05"E	1273.97'
(L3)	N 0°04'55"E	1273.87' = R2)
L4	N 0°08'31"E	451.77'
(L4)	N 0°04'55"E	451.73' = R2)
L5	N 0°02'12"E	918.86'
(L5)	N 0°04'55"E	918.95' = R2)

**REFERENCES:**

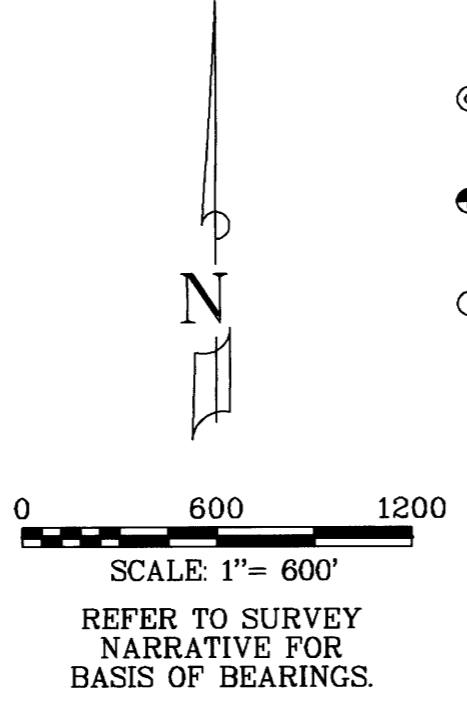
- R1 = 1980 BLM REMONUMENTATION NOTES BY ROSEBERRY
- R2 = 2021 UNOFFICIAL SURVEY BY BLM
- R3 = M144-18 (DOUGLAS COUNTY)
- R4 = C.S. BOOK 11, PAGE 277 ALLEN 2014 (JOSEPHINE COUNTY)
- R5 = GLO NOTES AND PLAT 1894
- R6 = M177-25 (DOUGLAS COUNTY)
- R7 = C.S. BOOK 41, PAGE 184 PRICE 1953 (DOUGLAS COUNTY)

**ABBREVIATIONS USED**

- |                                 |                        |
|---------------------------------|------------------------|
| BLM = BUREAU OF LAND MANAGEMENT | DF = DOUGLAS FIR       |
| GLO = GENERAL LAND OFFICE       | WF = WHITE FIR         |
| GIP = GALVANIZED IRON PIPE      | MD = MADRONE           |
| SSP = STAINLESS STEEL PIPE      | TO = TAN OAK           |
| BC = BRASS CAP                  | LO = LIVE OAK          |
| AC = ALUMINUM CAP               | NO. = NUMBER           |
| FND = FOUND                     | DN = DOCUMENT NUMBER   |
| DIA = DIAMETER                  | C.S. = COUNTY SURVEYOR |
| LKS = LINKS                     | T.L. = TAX LOT         |
| FWB = FROM WHICH BEARS          | WP = WITNESS POINT     |
| WHB = WITH HEALED BLAZE         | AP = ANGLE POINT       |
| VSC = VISIBLE SCRIBING          | N.T.S. = NOT TO SCALE  |
| RM = REFERENCE MONUMENT         | SEC. = SECTION         |
|                                 | SC = STANDARD CORNER   |
|                                 | CC = CLOSING CORNER    |

**NOTES**

- STANDARD BLM MONUMENT IS A 2" DIA GIP, WITH 3.25" DIA BC IF SET PRIOR TO 2021.
- STANDARD BLM MONUMENT SET IN 2021 IS A 2" DIA SSP, WITH 3.25" DIA BC.
- DIAMETERS OF GIP'S & SSP'S ARE INSIDE PIPE DIAMETERS.
- ( ) INDICATES RECORD DATA PER REFERENCES SHOWN.



**LEGEND OF SYMBOLS**

- ⊙ FND MONUMENT AS DESCRIBED IN CORNER NOTES, OR AS NOTED.
- ⊕ SET 5/8" DIA REBAR, 30" LONG, 24" IN THE GROUND, WITH 2.5" AC STAMPED "PLS 77662".
- CALCULATED POSITION, NOTHING FND OR TIED.

**SURVEY NARRATIVE:**

THE PURPOSE OF THIS SURVEY IS TO POST AND BLAZE THE LINES SHOWN IN BOLD HEREON. LINE TREES AND TREES ON BOTH SIDES OF THE BOLD LINES WERE BLAZED PER THIS SURVEY.

USING FOUND MONUMENTS AS SHOWN, I RETRACED THE NORTH-SOUTH CENTER LINE, A PORTION OF THE EAST-WEST CENTER LINE, THE NORTH ONE-HALF OF THE EAST LINE, AND A PORTION OF THE NORTH LINE OF SECTION 4, AND ALSO A PORTION OF THE SOUTH LINE OF SECTION 33, TIEING THE CONTROLLING CORNERS. THIS ALLOWED THE DETERMINATION OF THE NORTH-SOUTH AND EAST-WEST CENTER LINES, AND THE SUBDIVISION OF THE NORTHEAST ONE-QUARTER OF SECTION 4, AND THE LINES SHOWN IN BOLD AS DESCRIBED PER DN 2017-005757.

THIS SURVEY WAS CONDUCTED USING A TOPCON GPT 3003W TOTAL STATION AND TOPCON HIPER AND GR3 GNSS RECEIVERS. THE FIELD SURVEY COMMENCED NOVEMBER 17, 2022 AND WAS COMPLETED DECEMBER 23, 2022.

BEARINGS FOR THIS SURVEY ARE GEODETIC, CALCULATED BY USING DIFFERENTIAL LATITUDE AND LONGITUDE VALUES OF POINTS ALONG THE NORTH-SOUTH CENTER LINE OF SECTION 4. THESE VALUES WERE FIELD DETERMINED BY DIFFERENTIAL STATIC GPS OBSERVATIONS.

**CORNER NOTES**

- CORNER NO. 1. ANGLE POINT NO. 2, T.32S, T.33S.  
FND STANDARD BLM MONUMENT SET IN 1980 PER R1, FWB:  
1. 62" DIA DF STUMP, 15' HEIGHT, VSC, S 55°45'W, 50.0'  
(S 51°W, 72 LKS = R1)  
2. 10" DIA WF, VSC, N 33°55'W, 16.8'  
(N 25 1/2°W, 27 LKS = R1)
- CORNER NO. 2. NORTH 1/4 CORNER OF SECTION 4 ONLY  
SET NO. 5 REBAR WITH 2.5 INCH DIAMETER ALUMINUM CAP  
STAMPED "PLS 77662" BY INTERSECTION, FWB:  
1. 1.5" DIA GIP, TAGGED "RS 33", PER R7, N 0°47'08"W, 6.30'  
2. 24" DIA DF, ROTTED STUMP, S 26°19'W, 22.9'  
3. 28" DIA DF, WHB, S 63°44'E, 32.9'  
4. 11" DIA DF, S 54°35'W, 42.1' - NEW BT PER THIS SURVEY  
5. 10" DIA DF, S 7°36'W, 21.8' - NEW BT PER THIS SURVEY  
6. 10" DIA MD, N 55°19'W, 33.0' - NEW BT PER THIS SURVEY
- CORNER NO. 3. ANGLE POINT NO. 1, T.32S, T.33S.  
SAME AS SOUTH 1/4 CORNER OF SECTION 33 ONLY, T.32S.  
FND STANDARD BLM MONUMENT SET IN 1980 PER R1, FWB:  
1. 33" DIA DF, WHB, N 83°00'E, 82.4'  
(N 84 1/2°E, 122.5 LKS = R1)  
2. 33" DIA DF, WHB, S 17°41'W, 82.0'  
(S 17 1/2°W, 125 LKS = R1)  
3. 24" DIA MD, ROTTED STUMP, N 33°48'E, 32.6'  
(N 37°E, 50 LKS = R1)
- CORNER NO. 4. ORIGINAL CLOSING CORNER SECTIONS 4, 3  
FND STANDARD BLM MONUMENT SET IN 2021 PER R2, FWB:  
1. 35" DIA DF, VSC, N 31°52'E, 6.8'  
2. 28" DIA DF, VSC, N 11°58'W, 38.1'  
3. 12" DIA DF, VSC, S 7°27'W, 12.0'  
4. 20" DIA FIR, ROTTED STUMP, S 12°29'E, 17.1'  
5. 20" DIA FIR, ROTTED STUMP, S 28°39'W, 11.8'  
6. 22" DIA FIR SNAG, VSC, S 42°10'W, 47.6'  
7. 9" DIA TO, VSC, S 45°31'W, 28.2'
- CORNER NO. 5. STANDARD CORNER SECTIONS 33, 34  
FND 1.5" DIA GIP, TAGGED "RS 33" PER R7, FWB:  
1. 60" DIA DF, WHB, S 17°05'W, 20.1' (S 16°30'W, 20.1' = R6)  
2. 13" DIA DF, WHB, N 70°27'W, 5.6' (N 71°45'W, 5.6' = R6)  
3. 18" DIA DF, VSC, N 44°46'E, 18.7' (N 44°45'E, 19.7' = R6)  
4. 18" DIA DF, VSC, S 73°18'E, 16.8' (S 73°45'E, 16.8' = R6)  
5. 5' HIGH MD STUB, N 20°27'E, 15.0' (N 21°E, 15.7' = R6)
- CORNER NO. 6. NE 1/16 CORNER SECTION 4  
SET NO. 5 REBAR WITH 2.5 INCH DIAMETER ALUMINUM CAP  
STAMPED "PLS 77662" BY INTERSECTION, FWB:  
1. 43" DIA DF, WHB, S 4°39'W, 40.0'  
2. 4" DIA WF, S 78°47'E, 33.5' - NEW BT PER THIS SURVEY  
3. 9" DIA DF, N 72°50'W, 17.2' - NEW BT PER THIS SURVEY
- CORNER NO. 7. N 1/16 CORNER SECTIONS 4, 3  
FND STANDARD BLM MONUMENT SET IN 2021 PER R2, FWB:  
1. 7" DIA DF, VSC, N 51°33'W, 21.5' (N 51°15'W, 21.5' = R2)  
2. 7" DIA DF, VSC, N 84°18'E, 14.7' (N 84°30'E, 14.7' = R2)
- CORNER NO. 8. ANGLE POINT SECTIONS 4, 3  
FND 60" DIA DF, GLO LINE TREE, PER R2, FWB:  
1. RM, A 5/8" DIA IRON ROD WITH 2" DIA AC SET IN 2021  
PER R2, S 80°15'49"E, 16.10' - FIELD = R2  
2. RM, A 5/8" DIA IRON ROD WITH 2" DIA AC SET IN 2021  
PER R2, S 19°17'49"W, 16.10' - FIELD = R2

**CORNER NOTES (CONTINUED)**

- CORNER NO. 9. WITNESS POINT ON EAST-WEST CENTER LINE  
OF SECTION 4  
FND STANDARD BLM MONUMENT SET IN 2021 PER R2, FWB:  
1. 15" DIA DF, VSC, S 41°E, 27.6'  
2. 7" DIA DF, S 51°W, 17.4'  
TIES MADE WITH COMPASS AND TAPE.
- CORNER NO. 10. CENTER 1/4 CORNER SECTION 4  
SET NO. 5 REBAR WITH 2.5 INCH DIAMETER ALUMINUM CAP  
STAMPED "PLS 77662" BY INTERSECTION, FWB:  
1. STANDARD BLM MONUMENT SET IN 2021 PER R2,  
S 89°29'12" W, 80.37'  
NOTE: THIS IS A POINT ON THE EAST-WEST CENTER LINE  
OF SECTION 4 SET BY BLM PER R2 IN 2021.  
2. 13" DIA LO, N 32°10'W, 25.4' - NEW BT PER THIS SURVEY  
3. 8" DIA DF, S 44°05'E, 16.1' - NEW BT PER THIS SURVEY  
4. 10" DIA DF, S 58°20'W, 19.7' - NEW BT PER THIS SURVEY  
5. 9" DIA DF, N 12°11'E, 7.1' - NEW BT PER THIS SURVEY
- CORNER NO. 11. 1/4 CORNER SECTIONS 4, 3  
FND STANDARD BLM MONUMENT SET IN 2021 PER R2, FWB:  
1. 8" DIA LO, VSC, N 19°15'E, 30.6' - FIELD = R2  
2. 8" DIA LO, VSC, S 33°45'W, 30.6' - FIELD = R2
- CORNER NO. 12. 1/4 CORNER SECTIONS 4, 9  
FND STANDARD BLM MONUMENT SET IN 1980 PER R1, FWB:  
1. 58" DIA DF, WHB, N 46°51'E, 5.1' (N 45°E, 5 LKS = R1)  
2. 15" DIA MD, WHB, N 69°45'W, 23.7' (N 70°W, 41 LKS = R1)  
3. 14" DIA MD, WHB, S 3°49'E, 13.6' (S 4°W, 21 LKS = R1)
- NOTE: NEW BT'S PER THIS SURVEY ARE SCRIBED "XBT".

DOUGLAS COUNTY ASSESSOR'S MAP 33 5 TAX LOT 300

REGISTERED PROFESSIONAL LAND SURVEYOR

[Signature]  
OREGON  
JULY 11, 2006  
GREGG ARNOLD NEITSCH  
77662LS

EXPIRES: 12/31/2024

**MAP OF SURVEY**

FOR

JOHN HANCOCK LIFE INSURANCE COMPANY

LOCATED IN THE NORTHEAST 1/4 OF SECTION 4, T. 33 S., R. 5 W., W.M., IN DOUGLAS COUNTY, OREGON

NORTH STATE LAND SURVEYING  
4631 NORTH OLD STAGE ROAD  
MOUNT SHASTA, CA 96067

DECEMBER 2022 SCALE: 1" = 600' SHEET 1 OF 1  
RIPGEOD.ASC RIPPLE.MSGXD JOB NO. 811 DB: AM

MAP FILE M181-58