

PROPERTY SURVEY LOCATED IN THE NE1/4 OF SECTION 36,
TOWNSHIP 19 SOUTH, RANGE 9 WEST, W.M., DOUGLAS COUNTY, OREGON.

FILED
Date: 5/5/2022 By: JC
This survey consists of:
Map: M180-74
Narrative:
Corner Rpt: CS 63/109-S8
576.5
DOUGLAS COUNTY
SURVEYOR

SURVEY FOR: ROSEBURG RESOURCES CO.
PO BOX 1088, ROSEBURG, OR 97470
SURVEY BY: ESTABROOK LAND SURVEYING, INC.
PO BOX 574, LAKESIDE, OR 97449

NARRATIVE

THE PURPOSE OF THIS SURVEY WAS TO MARK BOUNDARY LINES FOR RESOURCE MANAGEMENT PURPOSES.
THE PROCEDURE WAS TO TRAVERSE BETWEEN EXISTING RECORD MONUMENTS AS SHOWN HEREON. I THEN MARKED THE BOUNDARY LINES WITH RED FLAGGING, BLAZES PAINTED RED AND STEEL POSTS. EQUIPMENT USED WAS A NIKON NIVO 5.0 TOTAL STATION WITH TDS DATA COLLECTION. ASSISTING PERSONNEL WERE BLUE JAMES, JACK JARRETT AND BRANDON CAMPBELL.
NOTE: WGS84 LATITUDE AND LONGITUDE ARE PER GARMIN ETREX HAND HELD GPS. THESE POSITIONS ARE NOT SURVEY GRADE AND SHOULD NOT BE USED TO ESTABLISH BOUNDARIES, BUT ARE PROVIDED TO ASSIST IN RESOURCE MANAGEMENT.

BASIS OF BEARING

BASIS OF BEARING IS ASSUMED PER BLM PLAT #1245.

RECORD REFERENCE INFORMATION

GLO PLAT #1242, DATED FEB. 12, 1901.
BLM PLAT #1245, DATED JAN. 7, 1963.
BLM PLAT #5602, DATED NOV. 16, 1977.
BLM ADMINISTRATIVE SURVEY, DATED 1977.

E1/16 CORNER SECTIONS 25 & 36
FOUND MONUMENT:
A 2 1/2" IRON PIPE WITH 3" BRASS CAP MARKED
"E1/16 S25 S36 1957" RECORD SHOWS MARKED 1958,
PER BLM PLAT #1245. SET STEEL POST ALONGSIDE.
FOUND BT'S:
A 56" FIR WITH HEALED FACE BEARS S08°W 25.7,
RECORD (S08°E)2. PLACED NEW TAG ON BT.
A 41" HEMLOCK WITH HEALED FACE BEARS N22°W 27.72'.
PLACED NEW TAG ON BT.
LAT AND LONG PER GARMIN ETREX HAND HELD GPS:
N: 43°53'06.4" W: 123°42'46.9"

1/16 80 CORNER SECTIONS 25 & 36
FOUND MONUMENT:
A 2 1/2" IRON PIPE WITH 3" BRASS CAP MARKED
"1/6 80 S25 S36 1958" PER BLM PLAT #1245. SET
STEEL POST ALONGSIDE.
FOUND BT:
A 55" CEDAR SNAG WITH VISIBLE SCRIBING IN FACE AND
TAG BEARS N61°45'W 26.40'.
NEW BT'S MARKED:
A 32" CEDAR, FACE SCRIBED "NE LOT 2 S36 BT" WITH X-CHOP
AND TAG BEARS SOUTH 20.1' TO A SPIKE AT SIDE CENTER.
A 17" MAPLE, BARK SCRIBED "SE LOT 11 S25 BT" WITH X-CHOP
AND TAG BEARS N08°W 6.0' TO A SPIKE AT SIDE CENTER.
LAT AND LONG PER GARMIN ETREX HAND HELD GPS:
N: 43°53'06.2" W: 123°42'29.5"

SCALE 1" = 200'

1/4 CORNER SECTIONS 25 & 36, POINT IDENTIFIER #640200
FOUND MONUMENT:
A 2 1/2" IRON PIPE WITH 3 1/4" BRASS CAP MARKED
"1/4 S25 S36 T19S R9W 1958" PER DCSO RECORDS
VOL. 31 PAGES 13039-13040. WITH STEEL POST ALONGSIDE.
FOUND BT'S:
A 22" FIR WITH HEALED FACE AND TAG BEARS N54°W 18.1'.
AN 11" FIR WITH HEALED FACE AND TAG BEARS N11°E 25.8'.
A 14" FIR WITH HEALED FACE AND TAG BEARS N83°E 39.2'.
A 16" RED CEDAR WITH HEALED FACE AND TAG BEARS S30°W 20.0'.
LAT AND LONG PER GARMIN ETREX HAND HELD GPS:
N: 43°53'06.7" W: 123°43'04.7"

LEGEND

- ⊙ FOUND MONUMENT AS NOTED
- BOUNDARY LINE MARKED WITH RED FLAGGING, RED TREE BLAZES AND STEEL POSTS.
- ()1 RECORD PER GLO PLAT #1242
- ()2 RECORD PER BLM PLAT #1245
- ()3 RECORD PER BLM PLAT #5602
- ()4 RECORD PER BLM ADMINISTRATIVE SURVEY

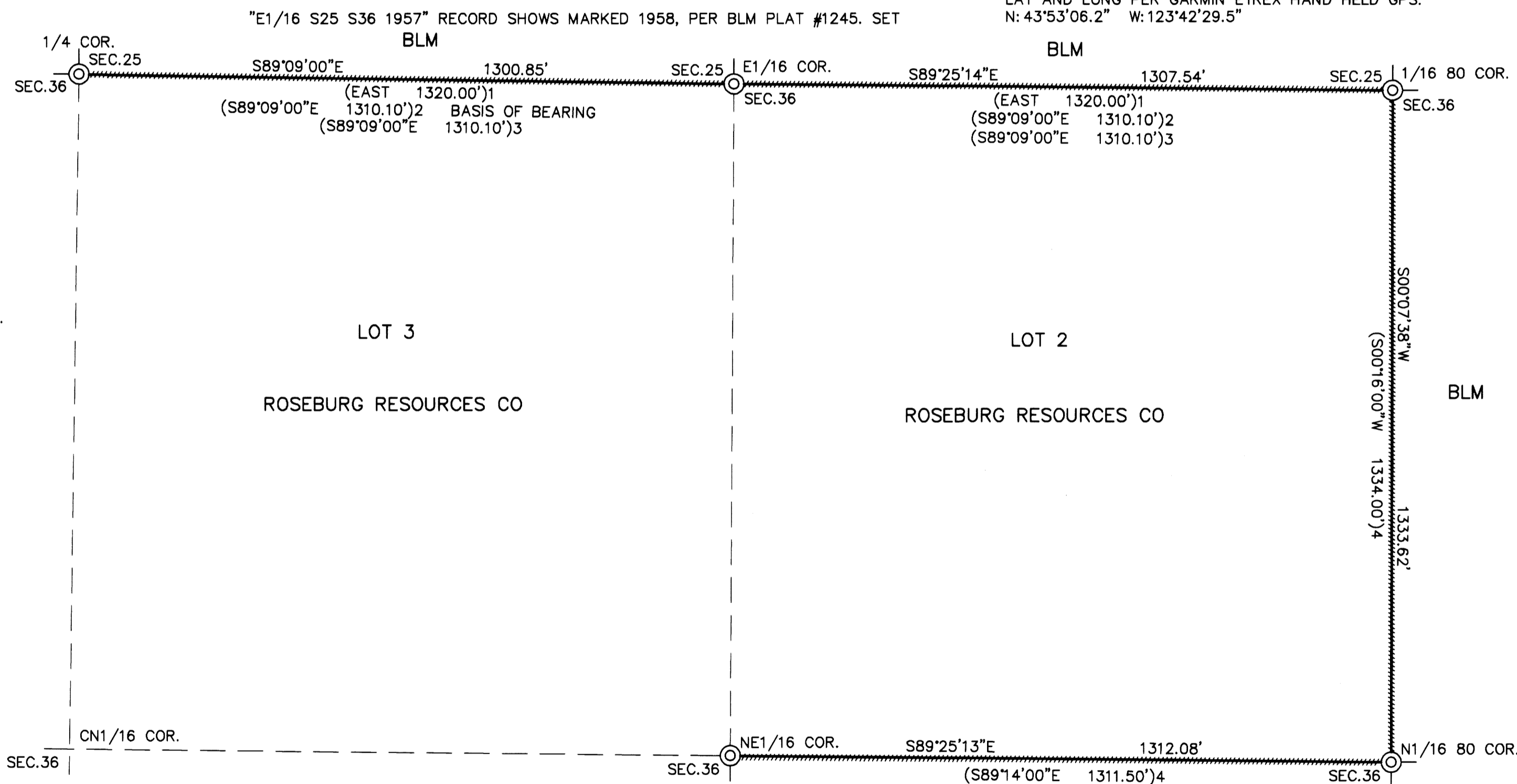
REGISTERED
PROFESSIONAL
LAND SURVEYOR

Jerry Lee Estabrook

OREGON
JUNE 30, 1985
JERRY LEE ESTABROOK
2703

EXPIRES 12/31/23

DRAWN BY: JLE	DATE: 4/6/2022
CHECKED BY: TJE	DRAWING NO.: NEGOLD
JOB NO.: 2022-16	SHEET 1 OF 1



NE1/16 CORNER SECTION 36
FOUND MONUMENT:
A 5/8" IRON ROD PER 1977 BLM ADMINISTRATIVE SURVEY.
WITH STEEL POST ALONGSIDE.
FOUND MONUMENT:
A 25" HEMLOCK STUMP WITH AXE MARKS BEARS S76°15'E 20.8'.
A 50" FIR STUMP WITH SPIKE IN FACE BEARS S04°30'W 51.3'.
A 16" FIR WITH HEALED FACE AND TAG BEARS S07°E 9.4'.
A 14" FIR WITH HEALED FACE AND TAG BEARS S71°W 25.1'.
LAT AND LONG PER GARMIN ETREX HAND HELD GPS:
N: 43°52'52.9" W: 123°42'47.3"

N1/16 80 CORNER SECTION 36
FOUND MONUMENT:
A 5/8" IRON ROD PER 1977 BLM ADMINISTRATIVE SURVEY.
SET STEEL POST ALONGSIDE.
FOUND BT'S:
A 39" HEMLOCK WITH HEALED FACE AND TAG BEARS S87°30'E 42.7'.
A 41" FIR WITH HEALED FACE AND TAG BEARS S19°E 45.0'.
LAT AND LONG PER GARMIN ETREX HAND HELD GPS:
N: 43°52'52.9" W: 123°42'29.6"

MAP FILE M180-74

MAP FILE M180-74

SEC. 36, T. 19S, R. 9W, W.M.

CORNER INFORMATION

- ① $\frac{1}{4}$ COR $\frac{25}{36}$; B.C. (U.S.B.L.M., 1958) FROM WHICH
MAPLE STUMP, RECORD BRG. $\dot{\epsilon}$ DIST $S67^{\circ}E$, 16 LKS
- ② $E\frac{1}{16}$ $\frac{25}{36}$; B.C. (U.S.B.L.M., 1958) FROM WHICH
FIR, 39" DIA, BRG $S8^{\circ}W$ (RECORD $S8^{\circ}E$), 26.3' WITH HEALED OVER BLAZE
HEMLOCK, 20" DIA BRG $N23^{\circ}W$, 28.5' WITH PARTLY HEALED BLAZE
- ③ $\frac{1}{16}$ 80 $\frac{25}{36}$; B.C. (U.S.B.L.M., 1958) $\dot{\epsilon}$ 2 B.T.S OF RECORD
- ④ C- $N\frac{1}{16}$; DROVE $\frac{5}{8}$ " x 30" REBAR FROM WHICH
FIR, 4" DIA, BRG $N54\frac{3}{4}^{\circ}E$, 2.2' WITH TAG $\dot{\epsilon}$ 5" STEEL SPIKE
FIR, 7" DIA, BRG $S11\frac{1}{4}^{\circ}E$, 24.0' " " " " " "
- ⑤ $NE\frac{1}{16}$; DROVE $\frac{5}{8}$ " x 30" REBAR FROM WHICH
FIR, 50" DIA, BRG $S4\frac{1}{2}^{\circ}W$, 51.3' WITH TAG $\dot{\epsilon}$ 5" STEEL SPIKE
HEMLOCK, 25" DIA, BRG $S76\frac{1}{4}^{\circ}E$, 20.8' " " " " " "
- ⑥ $N\frac{1}{16}$ 80; DROVE $\frac{5}{8}$ " x 30" REBAR FROM WHICH
FIR, 32" DIA, BRG $S19^{\circ}E$, 45.0' WITH TAG $\dot{\epsilon}$ 5" STEEL SPIKE
HEMLOCK, 23" DIA, BRG $S87\frac{1}{2}^{\circ}E$, 42.7' " " " " " "
- ⑦ $N\frac{1}{16}$ 36; B.C. (U.S.B.L.M., 1957) $\dot{\epsilon}$ 2 B.T.S OF RECORD
- ⑧ $\frac{1}{4}$ COR $\frac{35}{36}$; B.C. (U.S.B.L.M., 1957) FROM WHICH
FIR STUMP, 47" DIA, BRG $N86^{\circ}W$, 53.4' (RECORD 84 LKS) WITH
" $\frac{1}{4}$ S 35 BT" SCRIBED ON PARTIALLY HEALED $\dot{\epsilon}$ BURNED FACE
FIR, (RECORD $N86^{\circ}E$, 47 LKS) IS BLOWN DOWN
- ⑨ C- $\frac{1}{4}$ COR; DROVE $\frac{5}{8}$ " x 30" REBAR FROM WHICH
FIR, 3" DIA, BRG $S87^{\circ}W$, 30.9', WITH TAG $\dot{\epsilon}$ 5" STEEL SPIKE
FIR, 3" DIA, BRG $S26\frac{1}{4}^{\circ}E$, 17.8' " " " " " "
- ⑩ C- $E\frac{1}{16}$; POINT FOR COR IS OCCUPIED BY LARGE SNAG
FROM COR. POINT

- FIR, 56" DIA, BRS N80 $\frac{1}{4}$ °W, 39.4' WITH TAG & 5" STEEL SPIKE
 R.M. DROVE $\frac{5}{8}$ " X 30" REBAR, BRS N33 $\frac{1}{2}$ °W, 4.5'
- ⑪ C $\frac{1}{16}$ 80; DROVE $\frac{5}{8}$ " X 30" REBAR FROM WHICH
 FIR, 40" DIA, BRS S 12°W, 40.6' WITH TAG & 5" STEEL SPIKE
 FIR, 59" DIA, BRS N 84 $\frac{1}{2}$ °W, 41.7' " " " " " "
- ⑫ E $\frac{1}{4}$ COR $\frac{36}{}$; B.C. (U.S. B.L.M., 1957) & 2 B.T.S OF RECORD
- ⑬ C-S $\frac{1}{16}$; DROVE $\frac{5}{8}$ " X 30" REBAR FROM WHICH
 FIR, 5" DIA, BRS N43°E, 15.4' WITH TAG & 5" STEEL SPIKE
 FIR, 5" DIA, BRS N83°W, 26.4' " " " " " "
- ⑭ S $\frac{1}{4}$ COR $\frac{36}{}$; B.C. (U.S. B.L.M., 1953) FROM WHICH
 FIR, (RECORD; S37°E, 12 LKS)
 CEDAR, (RECORD; N26 $\frac{1}{2}$ °E, 11 LKS)
- ⑮ N $\frac{1}{4}$ COR $\frac{36}{}$; B.C. (U.S. B.L.M., 1953) FROM WHICH
 FIR, (RECORD; S13 $\frac{1}{2}$ °E, 10 LKS)
 FIR STUMP, (RECORD N29°W, 29 LKS)
 FIR STUMP, (RECORD S55 $\frac{1}{4}$ °E, 59 LKS)
 FIR STUMP, (RECORD S69°W, 42 LKS)
- ⑯ E $\frac{1}{16}$ $\frac{36}{}$; DROVE $\frac{5}{8}$ " X 30" REBAR FROM WHICH
 MAPLE, 14" DIA, BRS N66°W, 19.4' WITH TAG & 5" STEEL SPIKE
 FIR, 60" DIA, BRS N31 $\frac{1}{4}$ °E, 44.0' " " " " " "
 COR. SET BY RICHARD HINTZ, L.S. #497, IN 1972, A $\frac{5}{8}$ " REBAR
 BRS S78 $\frac{1}{2}$ °W, 2.7'
- ⑰ $\frac{1}{16}$ 80 COR $\frac{36}{}$; DROVE $\frac{5}{8}$ " X 30" REBAR FROM WHICH
 FIR, 45" DIA, BRS N73 $\frac{3}{4}$ °W, 37.9' WITH TAG & 5" STEEL SPIKE
 FIR STUMP, 32" DIA, BRS S54 $\frac{1}{2}$ °W, 12.9' " " " " " "

COR. SET BY RICHARD HINTZ, L.S. # 497, IN 1972, A $\frac{5}{8}$ " REBAR
BRS. S85°W, 4.8'

(B) C.C. $\frac{36}{11}$; B.C. (U.S. BLM., 1953) FROM WHICH
FIR, (RECORD; N7°W, 86 LKS)

C.S. FILE 65/109-58
415

SEC. 36, T. 19S., R. 9W., W.M.

SUBDIVISION

THIS SURVEY WAS DONE IN JULY & AUGUST USING A GURLEY TRANSIT (#TLO222) AND A 200' K&E DREADNAUGHT WIDEBAND TAPE. PORTIONS OF THE LINES WERE MEASURED WITH A K&E MICRO RANGER E.D.M. SYSTEM (#08B 10617). THE FIELD AND OFFICE WORK WAS DONE BY F.S. MUNRO, J.P. FARNSWORTH AND G.L. FREER.

C.S. FILE 65/109-58
5/5