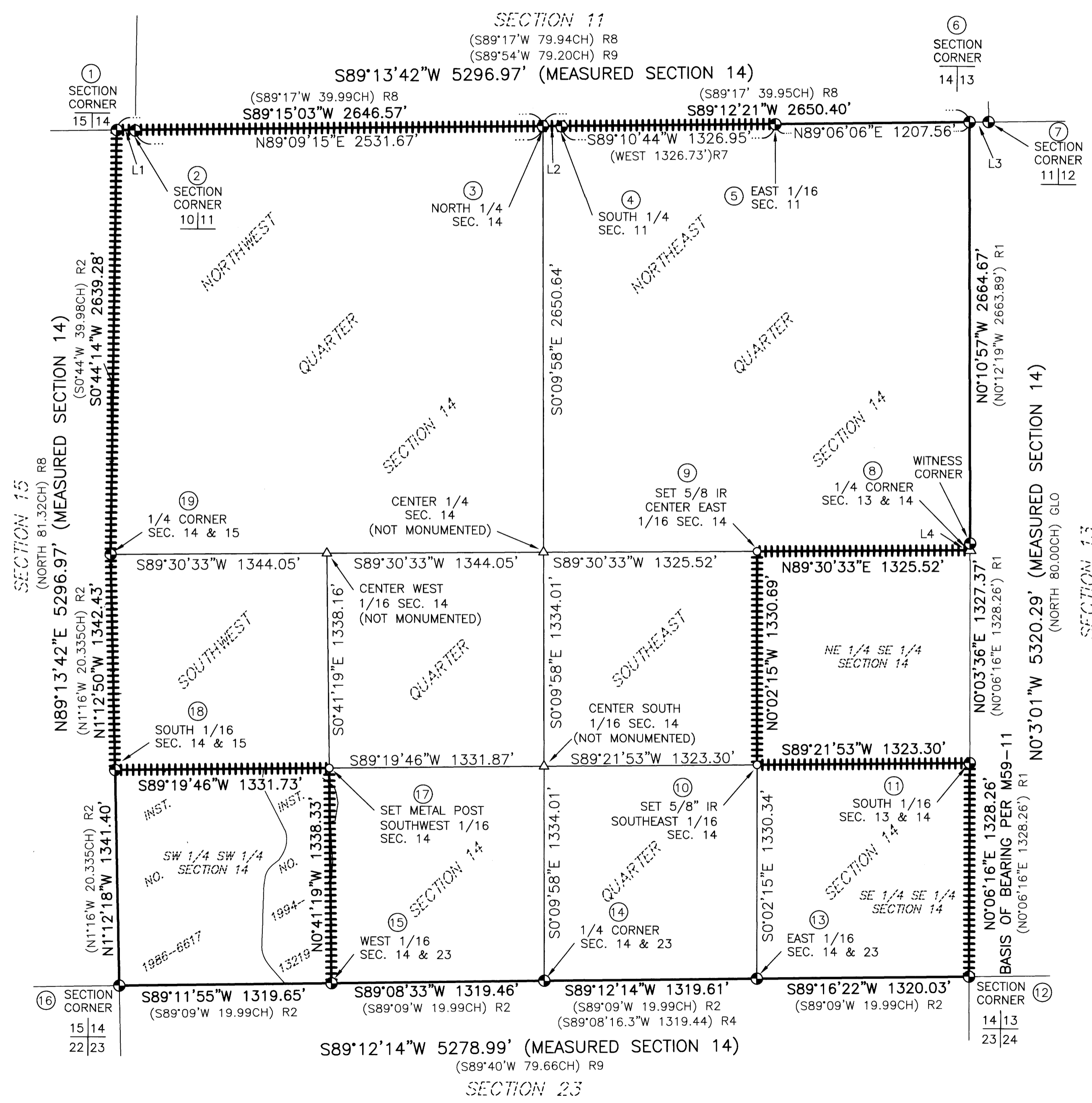


RECORD OF SURVEY
 LOCATED IN THE NORTHWEST, SOUTHWEST, NORTHEAST, AND SOUTHEAST QUARTERS OF SECTION 14,
 TOWNSHIP 30 SOUTH, RANGE 2 WEST, WILLAMETTE MERIDIAN,
 DOUGLAS COUNTY, OREGON
 FEBRUARY 10, 2022

FILED
 Date 4-26-2022 By: DR
 This survey consists of:
 Map: M180-72A+B
 Narrative: _____
 Corner Rpt: _____
DOUGLAS COUNTY
SURVEYOR

MAP FILE M180-72A



NARRATIVE

THE PURPOSE OF THIS SURVEY IS TO BLAZE, FLAG, AND POST THE SUBDIVISIONAL LINES AS SHOWN AND MONUMENT THE CENTER EAST 1/16 AND THE SOUTHEAST 1/16 OF SECTION 14, TOWNSHIP 30 SOUTH, RANGE 2 WEST, WILLAMETTE MERIDIAN. THE PROCEDURE WAS AS FOLLOWS:

MONUMENTS OF RECORD WERE FOUND AND HELD AS SHOWN. THE CENTER QUARTER CORNER OF SAID SECTION 14 WAS CALCULATED BY BEARING-BEARING INTERSECTION BETWEEN THE FOUND EAST AND WEST QUARTER CORNERS AND THE FOUND NORTH AND SOUTH QUARTER CORNERS OF SAID SECTION 14. THE CENTER EAST 1/16 CORNER WAS SET AT THE MID POINT BETWEEN SAID CALCULATED CENTER QUARTER CORNER AND SAID FOUND EAST QUARTER CORNER. THE CENTER SOUTH 1/16 CORNER WAS CALCULATED AT THE MIDPOINT BETWEEN SAID CALCULATED CENTER QUARTER CORNER AND THE FOUND SOUTH QUARTER CORNER OF SAID SECTION 14. THE SOUTHEAST 1/16 CORNER WAS SET BY BEARING-BEARING INTERSECTION OF SAID CENTER SOUTH 1/16 CORNER AND THE FOUND SOUTH 1/16 CORNER BETWEEN SAID SECTION 14 AND SECTION 23, SAID TOWNSHIP 30 SOUTH, RANGE 2 WEST. THE CENTER WEST 1/16 CORNER WAS CALCULATED AT THE MID POINT BETWEEN THE AFOREMENTIONED CALCULATED CENTER QUARTER CORNER AND THE FOUND WEST QUARTER CORNER OF SAID SECTION 14. THE SOUTHWEST 1/16 CORNER WAS SET BY BEARING-BEARING INTERSECTION BETWEEN SAID CALCULATED CENTER WEST 1/16 CORNER AND THE FOUND WEST 1/16 CORNER BETWEEN SAID SECTION 14 AND SECTION 23, SAID TOWNSHIP 30 SOUTH, RANGE 2 WEST, AND THE AFOREMENTIONED CALCULATED CENTER SOUTH 1/16 CORNER AND THE FOUND SOUTH 1/16 CORNER BETWEEN SAID SECTION 14 AND SECTION 15, SAID TOWNSHIP 30 SOUTH, RANGE 2 WEST. THE DESCRIBED NEW MONUMENTS WERE SET IN ACCORDANCE WITH THE BUREAU OF LAND MANAGEMENT (BLM) 2009 MANUAL OF SURVEYING INSTRUCTIONS.

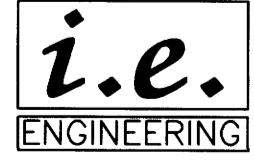
LEGEND

- - DENOTES FOUND BRASS CAP AS NOTED
- - DENOTES SET 5/8" X 30" IRON ROD WITH ALUMINUM CAP MARKED "ROSEBURG RESOURCES COMPANY"
- △ - DENOTES CALCULATED POSITION, NOTHING FOUND OR SET
- +++ - DENOTES BLAZED, FLAGGED AND POSTED LINE
- ()R1 - DENOTES RECORD PER DOUGLAS COUNTY SURVEY M59-11
- ()R2 - DENOTES RECORD PER BLM DEPENDENT RESURVEY DATED NOVEMBER 10, 1964
- ()R3 - DENOTES RECORD PER BLM 2011 DEPENDENT RESURVEY & SUBDIVISION OF SEC. 11
- ()R4 - DENOTES RECORD PER DOUGLAS COUNTY SURVEY RM3-33
- ()R5 - DENOTES RECORD PER DOUGLAS COUNTY SURVEY M162-29
- ()R6 - DENOTES RECORD PER DOUGLAS COUNTY SURVEY FILE CS 54/73-37
- ()R7 - DENOTES RECORD PER DOUGLAS COUNTY SURVEY M173-14
- ()R8 - DENOTES RECORD PER GLO PLAT DATED OCTOBER 14, 1910
- ()R9 - DENOTES RECORD PER GLO PLAT DATED SEPTEMBER 9, 1935

LINE	COURSE
L1	S88°37'13"E 114.99' (S88°36'E 1.74CH) R2 (S88°40'01"E 114.92') R3 (S88°41'26"E 114.98') R5
L2	N89°24'07"W 115.92' (N89°24'49"W 116.03') R3
L3	N89°52'12"E 118.83' (118.95') R1
L4	S00°10'57"E 5.00' (5' SOUTH) R6

REGISTERED
PROFESSIONAL
LAND SURVEYOR

OREGON
 NOVEMBER 10, 2010
BRENT H. KNAPP
8116
 EXPIRES: 6/30/2023



SCALE: 1"=500'
 SHEET 1 OF 2
 JOB NO. 1851-20 T109
 CLIENT:
 ROSEBURG RESOURCES CO.
 P.O. BOX 1088
 ROSEBURG, OR 97470
 809 SE Pine Street
 Roseburg, Oregon 97470
 PHONE (541) 673-0166
 FAX (541) 440-9392
 iemail@ieengineering.com

MAP FILE M180-72A



RECORD OF SURVEY

LOCATED IN THE NORTHWEST, SOUTHWEST, NORTHEAST, AND SOUTHEAST QUARTERS OF SECTION 14, TOWNSHIP 30 SOUTH, RANGE 2 WEST, WILLAMETTE MERIDIAN, DOUGLAS COUNTY, OREGON

FEBRUARY 10, 2022

FILED Date: 4-26-2022 By: [Signature] This survey consists of: Map: M190-72A&B Narrative: Corner Rpt: DOUGLAS COUNTY SURVEYOR

NOTES

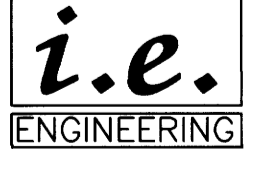
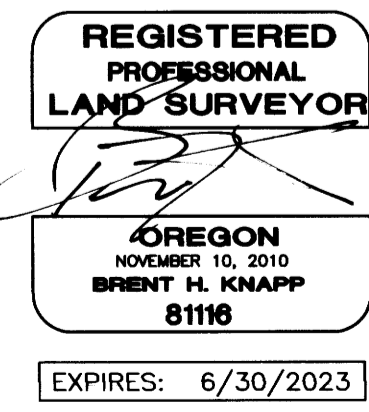
- 1 SECTION CORNER S15/S14 FOUND 3" BRASS CAP & ACCESSORIES PER DOUGLAS COUNTY SURVEYOR'S OFFICE PLSS CORNER RENEWAL NOTES (478500) DATED 4/2011 FOUND ACCESSORIES: 3" BRASS CAP (SECTION CORNER 10,11 ONLY) BEARS S88°37'13"E, 114.99' 37" SAWED PINE STUMP, S74°W, 18.5', NO MARKS 28" SAWED FIR STUMP, S47½°E, 56.1' 23" FIR, N65½°E, 13.2', HEALED DOUBLE BLAZE 19" MADRONE, S59½°E, 31.7', NO MARKS 21" MAPLE, S55°W, 57.4', PARTIALLY OPEN SCAR, NO MARKS 21" FIR, S64½°E, 24.4', HEALED BLAZE
2 SECTION CORNER S10/S11 FOUND 2.5" BRASS CAP & ACCESSORIES PER DOUGLAS COUNTY SURVEYOR'S OFFICE PLSS CORNER RENEWAL NOTES (500500) DATED 4/2011 FOUND ACCESSORIES: 3" BRASS CAP (SECTION CORNER 14,15 ONLY) BEARS N88°37'13"W, 114.99' 33" FIR, N14½°W, 50.2', HEALED DOUBLE BLAZE 11" FIR SNAG, S55°E, 25.1' 22" FIR, N29¼°E, 12.5' 12" MADRONE, N45°W, 19.8, NO VISIBLE MARKS NEW ACCESSORIES: 5' STEEL POST, SET 4' EAST
3 NORTH 1/4 CORNER S14 ONLY FOUND 2.5" BRASS CAP & ACCESSORIES PER DOUGLAS COUNTY SURVEYOR'S OFFICE PLSS CORNER RENEWAL NOTES (538500) DATED 4/2009 FOUND ACCESSORIES: 49" FIR (NO RECORD), N11°W, 20.5', ILLEGIBLE TREE TAG, NO SCAR 17" MADRONE, S15¾°E, 34.6', NO VISIBLE MARKS, METAL TAG 9" FIR, N47°W, 16.9', HEALED SCAR, METAL TAG NEW ACCESSORIES: 14" D. FIR, S07°E, 18.0', SCRIBED "1/4 S14 BT" 12" D. FIR, S45°W, 15.5', SCRIBED "1/4 S14 BT"
4 SOUTH 1/4 CORNER S11 ONLY FOUND 2.5" BRASS CAP & ACCESSORIES PER DOUGLAS COUNTY SURVEYOR'S OFFICE PLSS CORNER RENEWAL NOTES (540500) DATED 3/2017 FOUND ACCESSORIES: 15" FIR, N40°E, 5.6', HEALED BLAZE 19" FIR, S27½°W 21.2, HEALED BLAZE 5'X28" FIR SNAG, N50°W, 37.0', PARTIALLY HEALED BLAZE 19" MADRONE, N51¾°W, 50.5', HEALED DOUBLE BLAZE & TAG NEW ACCESSORIES: 16" D. FIR, N73°W, 12.6', SCRIBED "1/4 S11 BT"
5 EAST 1/16 CORNER S11 FOUND 2.5" ALUMINUM CAP PER DOUGLAS COUNTY SURVEY M173-14 FOUND ACCESSORIES: 7" FIR, N70°E, 10.4', HEALED SCAR & TAG 8" FIR, N46°W, 26.0, HEALED SCAR & TAG 3/4" IRON PIPE, S27°E 5.03' 6' STEEL POST, 2.0' NORTH
6 SECTION CORNER S14/S13 FOUND 2.5" BRASS CAP & ACCESSORIES PER DOUGLAS COUNTY SURVEYOR'S OFFICE PLSS CORNER RENEWAL NOTES (578500) DATED 11/2017 FOUND ACCESSORIES: 22" FIR N33°E, 9.3', GOOD SCAR 36" FIR STUMP, S24°E, 21.2', PARTIALLY VISIBLE SCRIBE 22" FIR, SOUTH 15°W, 30.8', GOOD SCAR T POST WITH SIGN, 2.0' SOUTH
7 SECTION CORNER S11/S12 FOUND 2.5" BRASS CAP & ACCESSORIES PER DOUGLAS COUNTY SURVEYOR'S OFFICE PLSS CORNER RENEWAL NOTES (600500) DATED 3/2017 FOUND ACCESSORIES: 12" FIR, N73°E, 35.6' HEALED BLAZE 13" FIR, N43°W, 41.7', HEALED BLAZE T POST WITH SIGN, 1.1' EAST
8 WITNESS CORNER TO SECTION CORNER S14/S13 FOUND 2.5" BRASS CAP (5' WITNESS CORNER) PER DOUGLAS COUNTY SURVEYOR'S OFFICE PLSS CORNER RENEWAL NOTES (600440) DATED 11/2017 FOUND ACCESSORIES: 24" CEDAR, N60°W, 18.1', GOOD SCAR 22" D. FIR, S43°E, 19.6' T POST, 2' NORTH T POST, 3' WEST

- 9 CENTER EAST 1/16 CORNER S14 SET 5/8"X30" IRON ROD WITH ALUMINUM CAP MARKED "ROSEBURG RESOURCES COMPANY T30S R2W CE1/16 S14 LS81116 2021" SET ACCESSORIES: METAL T POST, N89°30'33"E, 5.0' METAL T POST, S00°02'15"E, 10.0'
10 SOUTHEAST 1/16 CORNER S14 SET 5/8"X30" IRON ROD WITH ALUMINUM CAP MARKED "ROSEBURG RESOURCES COMPANY T30S R2W SE1/16 S14 LS81116 2021" SET ACCESSORIES: 22" FIR, N65°E, 11.2', SCRIBED "SE 1/16 S14 BT" 7" FIR, S72°W. 5.8', SCRIBED "SE 1/16 S14 BT"
11 SOUTH 1/16 CORNER S14/S13 FOUND 3" BRASS CAP & ACCESSORIES PER DOUGLAS COUNTY SURVEY M59-11 FOUND ACCESSORIES: 21" FIR, N10°36'E, 50.6', HEALED SCAR 22" FIR, S16°20'W, 19.0', HEALED SCAR
12 SECTION CORNER S14/S13/S24/S23 FOUND 3" BRASS CAP & ACCESSORIES PER DOUGLAS COUNTY SURVEYOR'S OFFICE PLSS CORNER RENEWAL NOTES (600400) DATED 10/23/2000 FOUND ACCESSORIES: FOUND BRASS CAP IN STONE MOUND 22" W. OAK, N52°W 99.7', HEALED DOUBLE BLAZE 18" W. OAK, N04°E, 46.9', FULLY HEALED DOUBLE BLAZE 3' STUMP REMNANT, N13°30'E, 90.2' 17" D. FIR, S57°W, 100.0', HEALED DOUBLE BLAZE
13 EAST 1/16 CORNER S14/S23 FOUND 3" BRASS CAP & ACCESSORIES PER BLM DEPENDENT RESURVEY DATED NOVEMBER 10, 1964 (CORNER RECORD PER VOL. 32, PG. 13414, DCSO RECORDS) FOUND ACCESSORIES: FOUND BRASS CAP IN STONE MOUND 19" FIR, N73½°W, 8.6', HEALED BLAZE 31" YELLOW PINE, S0¾°W, 53.5', HEALED BLAZE
14 1/4 CORNER S14/S23 FOUND 3" BRASS CAP & ACCESSORIES PER DOUGLAS COUNTY SURVEYOR'S OFFICE PLSS CORNER RENEWAL NOTES (540400) DATED 2/2001 FOUND ACCESSORIES: FOUND BRASS CAP IN STONE MOUND 46" FIR, N62¼°E, 72.6', HEALED BLAZE 33" FIR, S39½°E, 33.7', HEALED BLAZE
15 WEST 1/16 S14/S23 FOUND 3" BRASS CAP & ACCESSORIES PER BLM DEPENDENT RESURVEY DATED NOVEMBER 10, 1964 (CORNER RECORD PER VOL. 32, PG. 13415, DCSO RECORDS) FOUND ACCESSORIES: FOUND BRASS CAP IN STONE MOUND 27" FIR, N29¼°W, 46.2', HEALED SCAR 23" YELLOW PINE, S71¼°E, 29.0', POOR SCAR SHOWING, BARK PEELED, FITS RECORD BEARING AND DISTANCE FROM CORNER.
16 SECTION CORNER 15/14/23/22 FOUND 3" BRASS CAP & ACCESSORIES PER DOUGLAS COUNTY SURVEYOR'S OFFICE PLSS CORNER RENEWAL NOTES (500400) DATED 10/1996 FOUND ACCESSORIES: NW CORNER OF ROCK LEDGE, 11'X9'X7', ABOVE GROUND & MARKED "BX0" BEARS S70°30'E,15.2' NE CORNER OF ROCK LEDGE, 36'X21'X7', ABOVE GROUND & MARKED "BX0" BEARS S44°30'W, 42.2'
17 SOUTHWEST 1/16 CORNER S15/S14 SET METAL POST AT CORNER LOCATION (CORNER FALLS IN LARGE DOWN TREE OVER ROCK) SET ACCESSORIES: 5/8-INCH IRON ROD W/ALUMINUM CAP MARKED "ROSEBURG RESOURCES COMPANY T30S R2W WC SW1/16 S14 LS81116 2021," S89°19'32"W, 10.0' METAL POST - N00°41'19"W, 5.0' METAL POST - S00°41'34"E, 63.6'
18 SOUTH 1/16 CORNER S15/S14 FOUND 3" BRASS CAP & ACCESSORIES PER BLM DEPENDENT RESURVEY DATED NOVEMBER 10, 1964 (CORNER RECORD PER VOL. 32, PG. 13416, DCSO RECORDS) FOUND ACCESSORIES: 18" FIR, S67¼°W, 11.9', HEALED SCAR WITH TAG NEW ACCESSORIES: 10" FIR, S71°E, 24.9', SCRIBED "S 1/16 S14 BT"

- 19 1/4 CORNER S15/S14 FOUND 3" BRASS CAP & ACCESSORIES PER DOUGLAS COUNTY SURVEYOR'S OFFICE PLSS CORNER RENEWAL NOTES (500440) DATED OCTOBER 27, 1994 FOUND ACCESSORIES: ROTTEN MADRONE STUMP, INDETERMINATE SIZE, S49°W, 21.1' 19" D. FIR, S19°E, 23.8', HEALED DOUBLE BLAZE WITH TAG 18" D. FIR, S74½°E, 19.4', HEALED SCAR 10" D. FIR, S60°W, 9.4', HEALED SCAR 5/8-INCH IRON ROD WITH DCSO ALUMINUM CAP MARKED "BO 1 1995", S08½°E, 6.4'

MAP FILE M190-72B

MAP FILE M190-72B



SHEET 2 OF 2 JOB NO. 1851-20 T109 CLIENT: ROSEBURG RESOURCES CO. P.O. BOX 1088 ROSEBURG, OR 97470 809 SE Pine Street Roseburg, Oregon 97470 PHONE (541) 673-0166 FAX (541) 440-9392 iemail@ieengineering.com