

**MAP OF SURVEY**

LOCATED IN: SOUTHWEST 1/4, SECTION 22, TOWNSHIP 23 SOUTH, RANGE 06 WEST W.M. DOUGLAS COUNTY, OREGON  
 SURVEY FOR: JUNIPER PROPERTIES, LLC  
 SURVEY BY: P.O. BOX 1127 ROSEBURG, OREGON 97470  
 LONE ROCK TIMBER MANAGEMENT CO.  
 P.O. BOX 1127 ROSEBURG, OREGON 97470  
 TRACT: J230622 DATE: FEBRUARY 2022

**SURVEY NARRATIVE**

THE PURPOSE OF THIS SURVEY IS TO MARK PROPERTY LINES BETWEEN JUNIPER PROPERTIES, LLC AND THE BUREAU OF LAND MANAGEMENT FOR TIMBER MANAGEMENT PURPOSES FOR A TRACT LOCATED IN THE SOUTHWEST QUARTER OF SECTION 22, TOWNSHIP 23 SOUTH, RANGE 06 WEST W.M. IN 1957 THE BLM ESTABLISHED THE SOUTH 1/4, THE EAST 1/4, AND NORTH 1/4 CORNERS OF SECTION 22 BY PROPORTIONAL METHODS (BLM RESURVEY 822). THE WEST 1/4 CORNER OF SECTION 22 WAS RE-ESTABLISHED FROM ORIGINAL EVIDENCE. IN 1961 HAINES ESTABLISHED THE CENTER 1/4 AND THE CENTERWEST 1/16 CORNERS (M20-29). HAINES CORNERS WITHIN THE INTERIOR OF SECTION 22 WERE SET UTILIZING THE EXISTING (AND AT THAT TIME ACCEPTED) 1957 BLM MONUMENTS LOCATED ON THE EXTERIOR OF SECTION 22. SUBSEQUENT SURVEY LINES TO HAINES CENTER 1/4 AND CENTERWEST 1/16 CORNERS OF SECTION 22 HAVE BEEN USED FOR TIMBER MANAGEMENT PURPOSES IN EXCESS OF 60 YEARS BY BOTH ADJACENT LANDOWNERS. WE CONSULTED WITH THE BLM AND WE DECIDED TO ACCEPT THAT THE HAINES CENTER 1/4 AND CENTERWEST 1/16 CORNERS WERE PROPERLY SET BY HAINES USING THE BEST INFORMATION AVAILABLE IN 1961. WE THEREFORE UTILIZED THE CENTER 1/4 AND CENTERWEST 1/16 CORNERS, ESTABLISHED BY HAINES, FOR CONTROL OF PROPERTY LINES WITHIN THE INTERIOR OF SECTION 22. THE SOUTHWEST SECTION CORNER, SOUTH 1/4 CORNER, AND SOUTHEAST SECTION CORNER ON THE SOUTH LINE OF SECTION 22, ESTABLISHED BY THE BLM IN 1957, WERE FOUND TO BE ERRONEOUSLY SET BY THE BLM IN 1994 AND WERE RE-ESTABLISHED BY THE BLM IN 1994 (BLM RESURVEY 6686). THE MAGNITUDE OF CHANGE IN THESE RE-ESTABLISHMENTS BY THE BLM ON THE SOUTH LINE HAVE ERRORS RANGING FROM 19 TO 36 FEET. WE ALSO CONSULTED WITH THE BLM AND DETERMINED TO UTILIZE THE BLM 1994 CORNER RE-ESTABLISHMENTS FOR CONTROL OF THE EXTERIOR OF SECTION 22.

WE INITIATED OUR SURVEY BY RUNNING A CLOSED LOOP TRAVERSE BETWEEN THE WEST 1/4 CORNER AND THE CENTERWEST 1/16 CORNER UTILIZING GPS CONTROL POINTS WE ESTABLISHED IN OUR TRAVERSE. WE THEN RAN A TRAVERSE, BEGINNING AT HAINES CENTERWEST 1/16 CORNER, SOUTHERLY APPROXIMATELY 700 FEET TOWARD THE WEST 1/16 CORNER OF SECTIONS 22 AND 27 TO GPS CONTROL POINTS WE ESTABLISHED ON A ROADWAY. WE CONTINUED THIS TRAVERSE EASTERLY ALONG A ROAD TO THE HAINES CENTER 1/4 AND CLOSED THE TRAVERSE TO GPS POINTS ON THE ROADWAY. WE ALSO RAN A TRAVERSE FROM GPS CONTROL POINTS NEAR THE WEST 1/16 OF SECTIONS 22 AND 27 AND THE SOUTH 1/4 AND CLOSED TO GPS CONTROL POINTS SET NEAR THE CORNER MONUMENTS. WE THEN TIED IN THE SOUTHWEST SECTION CORNER OF SECTION 22 WITH DIRECT GPS OBSERVATION. WITH THIS CONTROL, WE THEN COMPUTED OUR SURVEY AND MARKED LINES BETWEEN THE WEST 1/4 AND THE CENTERWEST 1/16 AND ALSO MARKED THE NORTHERLY 700 FEET OF THE LINE BETWEEN THE CENTERWEST 1/16 AND THE WEST 1/16 CORNERS. THE PROPERTY LINES, AS SHOWN ON THIS MAP, WERE BLAZED AND PAINTED WITH FLUORESCENT RED/ORANGE PAINT. ALUMINUM TAGS MARKED "LONE ROCK TIMBER" WERE INSTALLED ON TREES ALONG PROPERTY LINES AND THE LINE WAS MARKED WITH BLUE AND RED PROPERTY LINE RIBBON. BEARING TREES WERE SCRIBED AT THE ROOT COLLAR WITH DISTANCES MEASURED TO A NAIL ON THE SIDE CENTER OF THE TREE. THIS SURVEY MAP WAS DRAFTED BY WESTON ADDINGTON. THIS SURVEY WAS PERFORMED WITH A TOPCON ES62 TOTAL STATION AND TRIMBLE 6000 XH CENTIMETER GRADE GPS WITH KEN HOFFINE, BRETT RAGON, AND IGNACIO ROMAN ASSISTING ME.

FILED DATE: 3-2-2022 BY: [Signature]  
 THIS SURVEY CONSISTS OF:  
 MAP: M180-53  
 NARRATIVE:  
 CORNER REPORT:  
 DOUGLAS COUNTY  
 SURVEYOR:

REGISTERED  
 PROFESSIONAL  
 LAND SURVEYOR

[Signature]  
 OREGON  
 NOVEMBER 10, 2020  
 DANIEL E. SAILY  
 85006

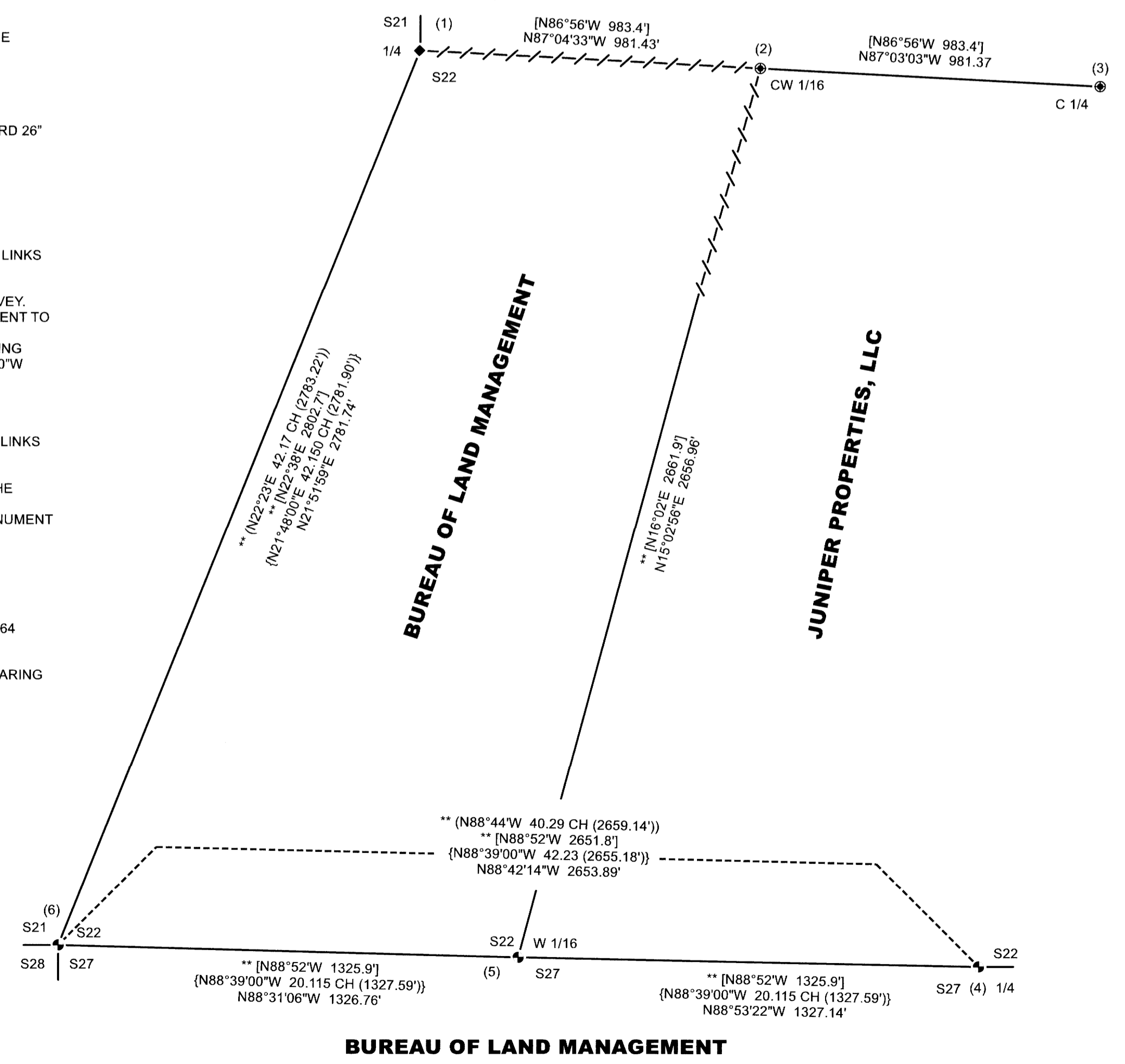
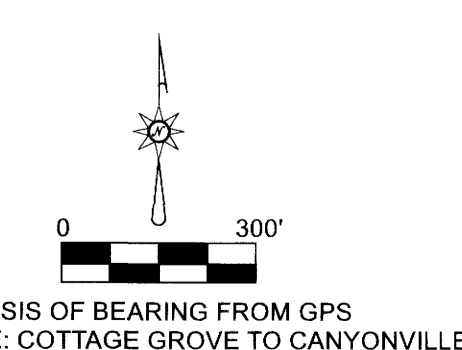
EXPIRES: 6/30/2022

**CORNER INFORMATION**

- 1) 1/4 CORNER OF SECTIONS 21 & 22, T23S, R06W (PLSS 400340)  
 FOUND 2 1/2" BLM BRASS CAP MARKED "T23S R6W 1/4 S21 S22 1957"  
 -- 49" DOUGLAS-FIR 3-FOOT-TALL STUMP BEARS N38 1/4"E 32.5 FEET WITH BLM TAG BUT NO VISIBLE FACE. (RECORD 48" N40"E 49 LINKS (32.34 FEET))  
 -- 29" HEMLOCK WITH A HEALED FACE BEARS N14 1/2"E 76.3 FEET (RECORD 20" N14 1/2"E 116 LINKS (76.56 FEET))  
 -- 23" WESTERN RED CEDAR WITH A WELL HEALED FACE BEARS N26 1/2"W 44.6 FEET (RECORD 14" N26 1/2"W 67 LINKS (44.22))  
 TOP OF CORNER MONUMENT IS 0.6 FEET ABOVE GROUND LEVEL. THE CAP IS LEANING SLIGHTLY SOUTHEAST 0.2 FEET OUT OF PLUMB. MONUMENT IS ON A STEEP EAST FACING SLOPE, APPROX. 150 FEET WEST OF A CREEK BOTTOM IN A SECOND GROWTH MIXED STAND AND NEAR THE EDGE OF AN OLD GROWTH TIMBER STAND TO THE NORTHWEST.
- 2) CENTERWEST 1/16 OF SECTION 22, T23S, R06W (PLSS 420340)  
 FOUND 1" T-IRON SET BY HAINES IN 1961 AS DESCRIBED IN COUNTY SURVEY MAP M20-29  
 -- ROTTEN STUMP BEARS N51 1/4"W 29.6 FEET. (RECORD 16" FIR N50"W 29.7 FEET)  
 -- 50" DOUGLAS-FIR WITH WELL HEALED FACE AND TAG BEARS S86"E 59.2 FEET (RECORD 24" FIR S85"E 59.8 FEET)  
 -- 14" DOUGLAS-FIR BEARS S64"W 15.4 FEET. WE SCRIBE "CW 1/16 S22 BT" AND TAG.  
 TOP OF CORNER MONUMENT IS 0.5 FEET ABOVE GROUND LEVEL. CORNER LIES 36 FEET WEST OF CENTERLINE OF A GRAVEL LOGGING SPUR ROAD WHICH RUNS NORTHWEST. A 5 1/2-FOOT-TALL U-POST IS 1.0 FEET NORTH. THE MONUMENT LIES ON A BREAK ON TOP OF A WEST SLOPE, 100 FEET WEST OF THE TOP OF THE RIDGE WHICH RUNS NORTH/SOUTH.
- 3) CENTER 1/4 OF SECTION 22, T23S, R06W (PLSS 440340)  
 FOUND 1" T-IRON SET BY HAINES 1.8 FEET BELOW GROUND.  
 -- 18"x4" REMAINS OF A ROTTEN STUMP BEARS N61"E 10.6 FEET. NO EVIDENCE OF A SCRIBE. (RECORD 22" FIR N57"E 10.5 FEET)  
 -- 27" DOUGLAS-FIR 4-FOOT-TALL STUMP PARTIALLY COVERED BY TIN AND VISIBLE BARK SCRIBE "C 1/4 S22" AND HAINES WASHER BEARS S27 1/2"E 15.8 FEET. (RECORD 26" FIR S27"E 16.5 FEET)  
 -- 13" DOUGLAS-FIR BEARS S89 1/2"W 10.3 FEET. WE SCRIBE "C 1/4 S22 BT" AND TAG.  
 -- 16" DOUGLAS-FIR BEARS S 72 1/4"E 21.7 FEET. WE SCRIBE "C 1/4 S22 BT" AND TAG.  
 CORNER LIES ON A STEEP NORTH SLOPE APPROX. 50 FEET NORTH OF A GRAVEL ROAD. WE PLACE 5 1/2-FOOT-TALL U-POST 1.0 FEET NORTH.
- 4) 1/4 CORNER OF SECTIONS 22 & 27, T23S, R06W (PLSS 440300)  
 FOUND 2 1/2" BLM BRASS CAP MARKED " 1/4 S22 S27 1994"  
 -- 22" DOUGLAS-FIR WITH A HEALED FACE AND BLM TAG, WHICH IS TWISTED AND NOT FACING THE CORNER, BEARS N58 3/4"W 65.10 FEET (RECORD 15" FIR N60"W 98 LINKS (64.7 FEET))  
 -- 12" DOUGLAS-FIR WITH A WELL HEALED FACE AND BLM TAG BEARS S40 1/4"E 47.5 FEET (RECORD 4" FIR S40 1/4"E 72 LINKS (47.52 FEET))  
 -- 28" DOUGLAS-FIR WITH BLM TAG, BUT NO FACE, BEARS N75 1/2"W 16.6 FEET. THIS BEARING TREE WAS MENTIONED, BUT NOT MEASURED, IN THE 1994 BLM RESURVEY. THE RECORD MEASUREMENT FROM C.S. FILE 57/39-51 UTILIZED THIS BEARING TREE TO RESET THE DISTURBED 1957 BLM CAP IN 1975 AND ITS RECORD MEASUREMENT TO THE 1957 CAP IS AN 8" DOUGLAS-FIR BEARING S65"E 19.8 FEET.  
 TOP OF CORNER MONUMENT IS 0.1 FEET ABOVE GROUND LEVEL. MONUMENT LIES ON WEST EDGE OF ROCK ROAD, 6.0 FEET FROM ROAD CENTERLINE. NO REMAINING EVIDENCE OF THE 1957 BLM BRASS CAP WHICH WAS REPORTED BY THE BLM TO BE INVERTED AND BURIED IN 1994 DURING THE BLM RESURVEY (BEARING N70°17'30"W 0.554 CHAINS (36.56 FEET)). IT IS ASSUMED THE 1957 MONUMENT HAS BEEN REMOVED.
- 5) WEST 1/16 OF SECTIONS 22 & 27, T23S, R06W (PLSS 420300)  
 FOUND 2 1/2" BLM BRASS CAP MARKED "W 1/16 S22 S27 1994"  
 -- 72" DOUGLAS-FIR WITH HAINES WASHER AND VISIBLE BARK SCRIBE "W 1/16 S22 BT", VISIBLE "X", AND BLM TAG BEARS N54"W 57.2 FEET (RECORD 60" FIR N54"W 85 LINKS (56.1 FEET))  
 -- 16" WESTERN RED CEDAR WITH WELL HEALED FACE AND BLM TAG BEARS S1 3/4"E 45.1 FEET (RECORD 10" CEDAR S2"E 68 LINKS (44.88 FEET))  
 -- HAINES T-IRON BEARS N88°04'41"W 31.85 FEET. (RECORD N87°58'30"W 0.481 CH (31.75 FEET)); HAINES T-IRON WAS BENT DOWN TO THE NORTH, WE STRAIGHTENED. THE STRAIGHTENED T-IRON IS 1.4 FT. TALL.  
 TOP OF CORNER MONUMENT IS 0.4 FEET ABOVE GROUND LEVEL. CORNER LIES ON A NORTHWEST SLOPE AND ON EAST SIDE OF CREEK RUNNING NORTHEAST. MONUMENT IS IN HEAVY TIMBER AND BRUSH.
- 6) SECTION CORNER FOR SECTIONS 21, 22, 27, & 28 T23S, R06W (PLSS 400300)  
 FOUND BLM BRASS CAP MARKED "T23S R6W S21 S22 S28 S27 1994"  
 -- 39" DOUGLAS-FIR WITH HEALED FACE AND BLM TAG (RECORD 35" FIR BEARS S83°W 137 LINKS (90.42 FEET)). FOUND NOT MEASURED.  
 -- 36" DOUGLAS-FIR WITH HEALED FACE AND BLM TAG (RECORD 30" FIR BEARS N67°W 62 LINKS (40.92 FEET)). FOUND NOT MEASURED.  
 -- 14" DOUGLAS-FIR WITH HEALED FACE AND "X" AT BREAST HEIGHT. WE PLACE NEW TAG WITH RECORD BEARING AND DISTANCE. (5" FIR BEARS N65°E 104 LINKS (68.64 FEET)). FOUND NOT MEASURED.  
 -- 15" DOUGLAS-FIR WITH HEALED FACE AND BLM TAG (RECORD 9" FIR S33°E 119 LINKS (78.54 FEET)). FOUND NOT MEASURED.  
 NO REMAINING EVIDENCE OF THE 1957 BLM BRASS CAP WHICH WAS REPORTED BY THE BLM TO BE INVERTED AND BURIED IN 1994 DURING THE BLM RESURVEY (BEARING S70°19'30"W 0.481 CHAINS (31.75 FEET)). IT IS ASSUMED THE 1957 MONUMENT HAS BEEN REMOVED.

**LEGEND**

- ◆ FOUND 1957 BLM BRASS CAP AS PER BLM RESURVEY PLAT 822 FIELD NOTES VOLUME 30 PAGE 12682-12684 FILED IN THE DOUGLAS COUNTY SURVEYOR'S OFFICE
- ⊙ FOUND 1961 T-IRON AS PER SURVEY MAP M20-29 SET BY PROPORTION & FILED WITH DOUGLAS COUNTY SURVEYOR'S OFFICE
- ⊙ FOUND 1994 BLM BRASS CAP AS PER BLM RESURVEY PLAT 6686 FIELD NOTES VOLUME 51 PAGE 19486-19488 FILED IN THE DOUGLAS COUNTY SURVEYOR'S OFFICE.
- - - PROPERTY LINES BLAZED, PAINTED, & RIBBONED
- LINES SURVEYED BY TRAVERSE AND/OR GPS
- ( ) 1957 BLM RESURVEY PLAT 822 RECORD
- [ ] 1961 HAINES SURVEY RECORD FROM MAP M20-29
- { } 1994 BLM RESURVEY PLAT 6686 RECORD
- \*\* RECORD DISTANCE BETWEEN BLM 1957 AND/OR HAINES 1961 MONUMENTS



MAP FILE M180-53

MAP FILE M180-53