

PROPERTY SURVEY LOCATED IN THE NE1/4, NW1/4, SW1/4 & SE1/4 OF SECTION 1, T. 21 S., R. 10 W.
AND THE SW1/4 OF SECTION 6, T. 21 S., R. 9 W., W.M., DOUGLAS COUNTY, OREGON.

FILED
Date: 2-24-2022 By: DJ
This survey consists of:
Map: M180-48A & B
Narrative:
Corner Rpt.:

DOUGLAS COUNTY
SURVEYOR



SCALE 1" = 400'

SURVEY FOR: ROSEBURG RESOURCES CO.
PO BOX 1088
ROSEBURG, OR 97470

SURVEY BY: ESTABROOK LAND SURVEYING, INC.
PO BOX 574
LAKESIDE, OR 97449

LEGEND

- ⊙ FOUND MONUMENT AS NOTED
- SET MONUMENT AS NOTED
- CALCULATED PER GLO PLAT #1400
- BOUNDARY LINE MARKED WITH RED FLAGGING, RED TREE BLAZES AND STEEL POSTS.
- ()1 RECORD PER GLO PLAT #1400
- ()2 RECORD PER BLM PLAT #5413A
- ()3 RECORD PER M61-31
- ()2 RECORD PER M92-74

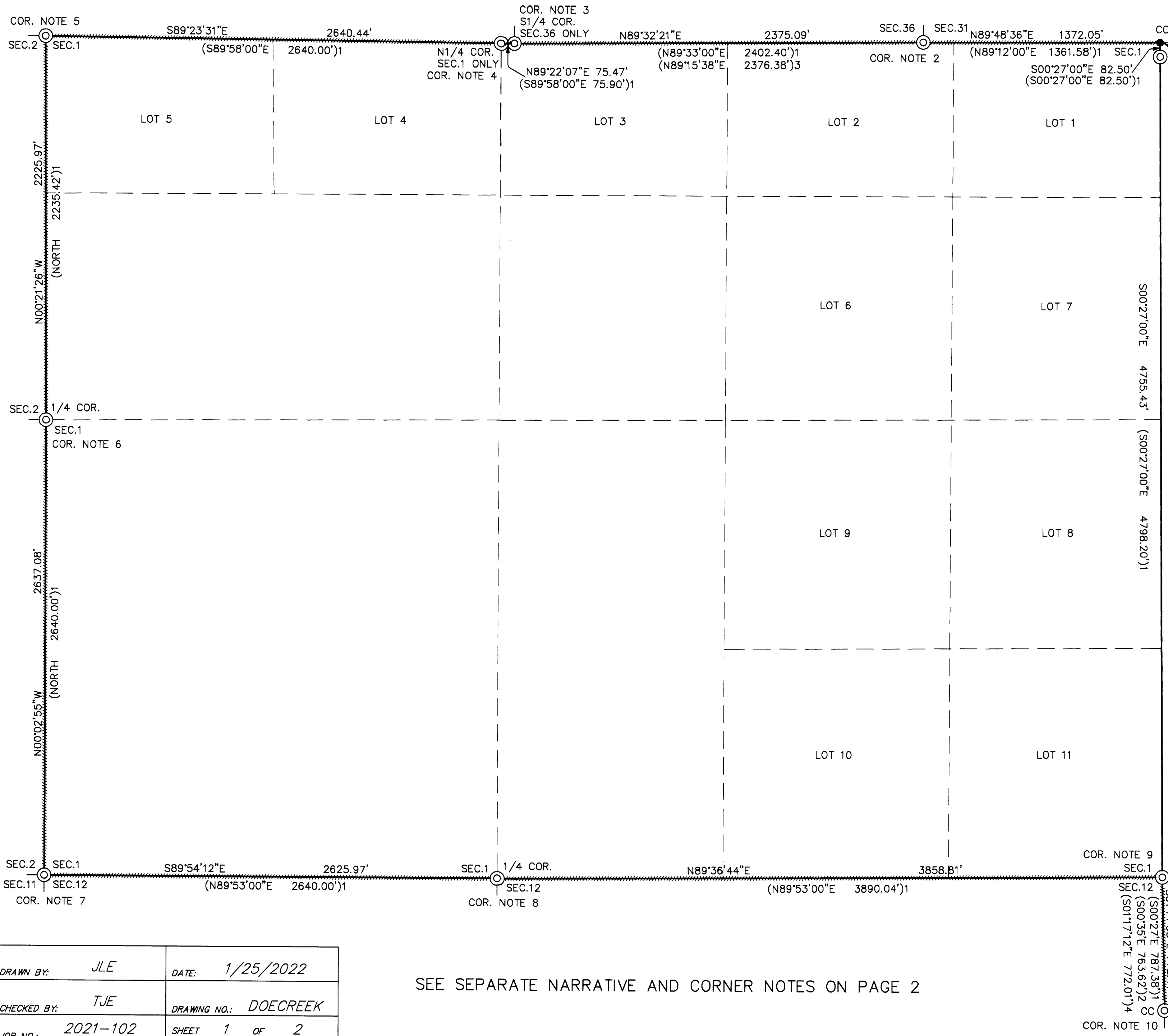
REGISTERED
PROFESSIONAL
LAND SURVEYOR

Jerry Lee Estabrook

OREGON
JUNE 30, 1995
JERRY LEE ESTABROOK
2703

EXPIRES 12/31/23

NOTE: THE RECORD MONUMENT FOR THE S1/4 CORNER OF SECTION 6 ONLY COULD NOT BE FOUND DUE TO A LAND SLIDE AT THE CORNER LOCATION, LEAVING AN EXPOSED ROCK FACE AT THE CORNER POSITION. I THEREFORE RESET THE CORNER MONUMENT AT A DISTANCE/DISTANCE INTERSECTION FROM THE RECORD BT'S HOLDING THE RECORD DISTANCES FROM THE BT'S.



SEE SEPARATE NARRATIVE AND CORNER NOTES ON PAGE 2

DRAWN BY: JLE	DATE: 1/25/2022
CHECKED BY: TJE	DRAWING NO.: DOECREEK
JOB NO.: 2021-102	SHEET 1 OF 2

MAP FILE M180-48A

MAP FILE M180-48A