

PROPERTY SURVEY LOCATED IN THE NE1/4, NW1/4, SW1/4 & SE1/4 OF SECTION 1, T. 21 S., R. 10 W.  
AND THE SW1/4 OF SECTION 6, T. 21 S., R. 9 W., W.M., DOUGLAS COUNTY, OREGON.

FILED  
Date: 2-24-2022 By: DJ  
This survey consists of:  
Map: M180-48A & B  
Narrative:  
Corner Rpt.:

DOUGLAS COUNTY  
SURVEYOR



SCALE 1" = 400'

SURVEY FOR: ROSEBURG RESOURCES CO.  
PO BOX 1088  
ROSEBURG, OR 97470

SURVEY BY: ESTABROOK LAND SURVEYING, INC.  
PO BOX 574  
LAKESIDE, OR 97449

LEGEND

- ⊙ FOUND MONUMENT AS NOTED
- SET MONUMENT AS NOTED
- CALCULATED PER GLO PLAT #1400
- BOUNDARY LINE MARKED WITH RED FLAGGING, RED TREE BLAZES AND STEEL POSTS.
- ( )1 RECORD PER GLO PLAT #1400
- ( )2 RECORD PER BLM PLAT #5413A
- ( )3 RECORD PER M61-31
- ( )2 RECORD PER M92-74

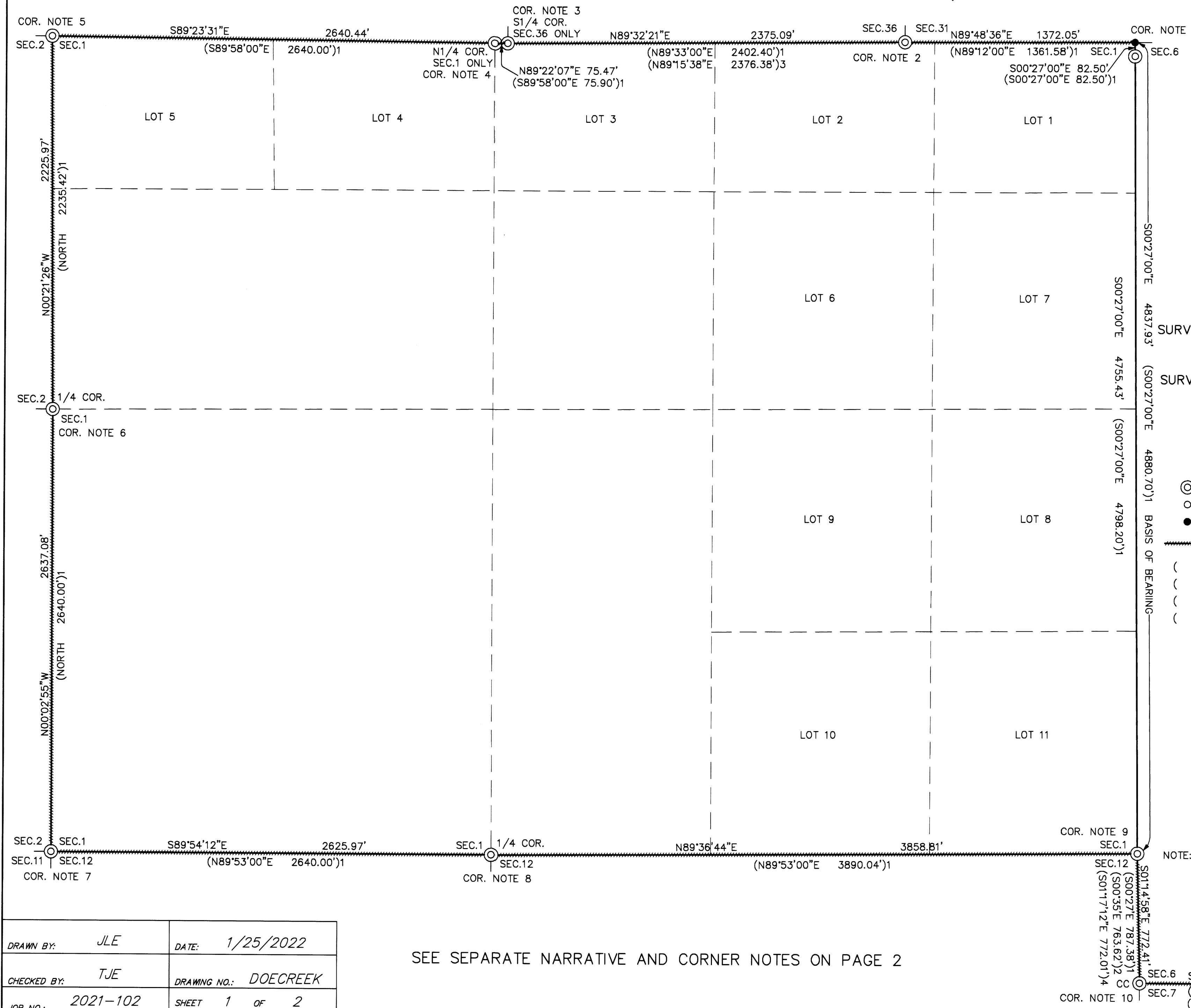
REGISTERED  
PROFESSIONAL  
LAND SURVEYOR

*Jerry Lee Estabrook*

OREGON  
JUNE 30, 1995  
JERRY LEE ESTABROOK  
2703

EXPIRES 12/31/23

NOTE: THE RECORD MONUMENT FOR THE S1/4 CORNER OF SECTION 6 ONLY COULD NOT BE FOUND DUE TO A LAND SLIDE AT THE CORNER LOCATION, LEAVING AN EXPOSED ROCK FACE AT THE CORNER POSITION. I THEREFORE RESET THE CORNER MONUMENT AT A DISTANCE/DISTANCE INTERSECTION FROM THE RECORD BT'S HOLDING THE RECORD DISTANCES FROM THE BT'S.



SEE SEPARATE NARRATIVE AND CORNER NOTES ON PAGE 2

DRAWN BY: JLE	DATE: 1/25/2022
CHECKED BY: TJE	DRAWING NO.: DOECREEK
JOB NO.: 2021-102	SHEET 1 OF 2

MAP FILE M180-48A

MAP FILE M180-48A

PROPERTY SURVEY LOCATED IN THE NE1/4, NW1/4, SW1/4 & SE1/4 OF SECTION 1, T. 21 S., R. 10 W.  
AND THE SW1/4 OF SECTION 6, T. 21 S., R. 9 W., W.M., DOUGLAS COUNTY, OREGON.

NARRATIVE

THE PURPOSE OF THIS SURVEY WAS TO MARK BOUNDARY LINES FOR RESOURCE MANAGEMENT PURPOSES.  
THE PROCEDURE WAS TO TRAVERSE BETWEEN EXISTING RECORD CORNERS AS SHOWN HEREON. I THEN MARKED THE BOUNDARY LINES WITH RED FLAGGING, BLAZES PAINTED RED AND STEEL POSTS. EQUIPMENT USED WAS A NIKON NIVO 5.0 TOTAL STATION WITH TDS DATA COLLECTION. ASSISTING PERSONNEL WERE BLUE JAMES, JACK JARRETT AND BRANDON CAMPBELL.  
NOTE: WGS84 LATITUDE AND LONGITUDE ARE PER GARMIN ETREX HAND HELD GPS. THESE POSITIONS ARE NOT SURVEY GRADE AND SHOULD NOT BE USED TO ESTABLISH BOUNDARIES, BUT ARE PROVIDED TO ASSIST IN RESOURCE MANAGEMENT.

BASIS OF BEARING

BASIS OF BEARING IS ASSUMED PER GLO PLAT #1400.

RECORD REFERENCE INFORMATION

GLO PLAT #1400, DATED MARCH 10, 1920.  
BLM PLAT #5413A, DATED FEBRUARY 1970.  
M61-31, BY FORREST HALES, DATED AUGUST 25, 1976.  
M92-74, BY RICHARD J. HINTZ, DATED AUGUST 1982.

CORNER NOTE 1

CLOSING CORNER SECTIONS 1 & 6, POINT IDENTIFIER 700700  
FOUND WITNESS CORNER MONUMENT:  
A 1" IRON PIPE WITH 2 1/2" BRASS CAP MARKED "T20S R9W CC S1 R10 S6 R9 WC T21S 1975" PER CS FILE 57/39-4.  
FOUND BT'S:  
A 65" CEDAR WITH HEALED FACE BEARS S42°E 44.5'. PLACED NEW TAG ON BT.  
A 55" CEDAR STUMP WITH NO VISIBLE MARKS BEARS N38°W 21.8'.  
FOUND BO:  
A STEEL POST BEARS N10°E 1.2'.  
NEW BO SET:  
A STEEL POST BEARS SOUTH 3.0'.  
A STEEL POST BEARS WEST 3.0'.  
LAT AND LONG PER GARMIN ETREX HAND HELD GPS:  
N: 43°46'57.0" W: 123°49'28.7"

CORNER NOTE 2

SECTION CORNER SECTIONS 31 & 36 ONLY, POINT IDENTIFIER 671700  
FOUND MONUMENT:  
A 3" IRON PIPE WITH 3 1/2" BRASS CAP MARKED "T20S R10W R9W S36 S31 T21S R10W S1 1951" PER DCSO RECORDS VOL. 27 PAGES 11663-11664. SET STEEL POST ALONGSIDE.  
FOUND BT'S:  
A 42" CEDAR WITH HEALED FACE AND TAG BEARS N66°30'E 17.16'.  
A 41" CEDAR WITH HEALED FACE AND TAG BEARS N57°W 34.32'.  
NEW BT'S MARKED:  
A 13" FIR, FACE SCRIBED "X BT" WITH X-CHOP AND TAG BEARS S70°E 69.5' TO A SPIKE AT SIDE CENTER.  
AN 18" MAPLE, BARK SCRIBED "X BT" WITH X-CHOP AND TAG BEARS S42°E 32.8' TO A SPIKE AT SIDE CENTER.  
LAT AND LONG PER GARMIN ETREX HAND HELD GPS:  
N: 43°46'57.7" W: 123°49'47.5"

CORNER NOTE 3

S1/4 CORNER SECTION 36 ONLY POINT IDENTIFIER 641700  
FOUND MONUMENT:  
A 1" IRON PIPE WITH 2 1/2" BRASS CAP MARKED "1/4 S36 1951" PER DCSO RECORDS VOL. 27 PAGES 11664-11665. SET STEEL POST ALONGSIDE.  
FOUND BT'S:  
A 40" CEDAR SNAG WITH OPEN FACE AND NO VISIBLE MARKS BEARS N57°15'E 62.04'.  
A ROTTEN 36" HEMLOCK STUMP WITH NO VISIBLE MARKS BEARS N30°W 21.12'.  
NEW BT'S MARKED:  
A 22" FIR, FACE SCRIBED "X BT" WITH X-CHOP AND TAG BEARS S40°E 8.8' TO A SPIKE AT SIDE CENTER.  
AN 18" FIR, FACE SCRIBED "X BT" WITH X-CHOP AND TAG BEARS S53°W 20.1' TO A SPIKE AT SIDE CENTER.  
A 13" FIR, FACE SCRIBED "X BT" WITH X-CHOP AND TAG BEARS S85°W 19.2' TO A SPIKE AT SIDE CENTER.  
NEW BO TIED:  
A 1" IRON PIPE WITH 2 1/2" BRASS CAP MARKED "1/4 S1 1951" BEARS S89°22'07"W 75.47'.  
LAT AND LONG PER GARMIN ETREX HAND HELD GPS:  
N: 43°46'57.2" W: 123°50'19.3"

CORNER NOTE 4

N1/4 CORNER SECTION 1 ONLY, POINT IDENTIFIER 640700  
FOUND MONUMENT:  
A 1" IRON PIPE WITH 2 1/2" BRASS CAP MARKED "1/4 S1 1951" PER DCSO RECORDS VOL. 27 PAGE 11665. SET STEEL POST ALONGSIDE.  
FOUND BT:  
A ROTTEN 70" FIR STUMP WITH NO VISIBLE MARKS BEARS S74°E 19.14'.  
NEW BT'S MARKED:  
A 15" HEMLOCK, FACE SCRIBED "X BT" WITH X-CHOP AND TAG BEARS N08°E 30.5' TO A SPIKE AT SIDE CENTER.  
A 10" HEMLOCK, FACE SCRIBED "N1/4 S1 BT" WITH X-CHOP AND TAG BEARS S58°E 15.2' TO A SPIKE AT SIDE CENTER.  
AN 11" HEMLOCK, FACE SCRIBED "N1/4 S1 BT" WITH X-CHOP AND TAG BEARS S82°W 23.2' TO A SPIKE AT SIDE CENTER.  
NEW BO TIED:  
A 1" IRON PIPE WITH 2 1/2" BRASS CAP MARKED "1/4 S36 1951" BEARS N89°22'07"E 75.47'.  
LAT AND LONG PER GARMIN ETREX HAND HELD GPS:  
N: 43°46'57.3" W: 123°50'20.6"

SURVEY FOR: ROSEBURG RESOURCES CO.  
PO BOX 1088  
ROSEBURG, OR 97470

SURVEY BY: ESTABROOK LAND SURVEYING, INC.  
PO BOX 574  
LAKESIDE, OR 97449

REGISTERED  
PROFESSIONAL  
LAND SURVEYOR

OREGON  
JUNE 30, 1995  
JERRY LEE ESTABROOK  
2703

EXPIRES 12/31/23

FILED  
Date: 2-24-2022 By: JLE  
This survey consists of:  
Map: M180-48 A&B  
Narrative:  
Corner Rpt:  
DOUGLAS COUNTY  
SURVEYOR

CORNER NOTE 5

SECTION CORNER SECTIONS 1 & 2 ONLY, POINT IDENTIFIER 600700  
FOUND MONUMENT:  
A 2" IRON PIPE WITH 2 1/2" BRASS CAP MARKED "S36 T20S R10W S1 S2 T21S R10W 1951" PER DCSO RECORDS VOL. 27 PAGE 11666 AND RESET PER CS FILE 57/39-7. SET STEEL POST ALONGSIDE.  
FOUND BT'S:  
A 28" HEMLOCK WITH NO VISIBLE MARKS BEARS S53°E 41.7'.  
A 17" FIR STUMP WITH HEALED FACE BEARS S22°W 35.2'.  
NEW BT'S MARKED:  
A 15" HEMLOCK, FACE SCRIBED "NW S1 BT" WITH X-CHOP AND TAG BEARS S82°E 15.1' TO A SPIKE AT SIDE CENTER.  
A 13" HEMLOCK, FACE SCRIBED "NW S1 BT" WITH X-CHOP AND TAG BEARS S32°E 17.1' TO A SPIKE AT SIDE CENTER.  
A 9" HEMLOCK, FACE SCRIBED "X BT" WITH X-CHOP AND TAG BEARS N85°W 9.7' TO A SPIKE AT SIDE CENTER.  
AN 11" HEMLOCK, FACE SCRIBED "X BT" WITH X-CHOP AND TAG BEARS N48°W 25.2' TO A SPIKE AT SIDE CENTER.  
LAT AND LONG PER GARMIN ETREX HAND HELD GPS:  
N: 43°46'57.4" W: 123°50'56.9"

CORNER NOTE 6

1/4 CORNER SECTIONS 1 & 2, POINT IDENTIFIER 600640  
FOUND MONUMENT:  
A 1 1/2" IRON PIPE WITH 2 1/2" BRASS CAP MARKED "T21S R10W 1/4 S1 S2 1975" PER CS FILE 57/39-9. WITH 1919 GLO 1" IRON PIPE BEARING SOUTH 0.3'. SET STEEL POST ALONGSIDE.  
FOUND BT'S:  
A 38" HEMLOCK WITH HEALED FACE AND TAG BEARS S76°W 47.2'.  
A 29" ALDER WITH HEALED FACE AND TAG BEARS N24°W 23.7'.  
NEW BT'S MARKED:  
AN 18" FIR, FACE SCRIBED "W1/4 S1 BT" WITH X-CHOP AND TAG BEARS N50°E 22.9' TO A SPIKE AT SIDE CENTER.  
A 14" FIR, FACE SCRIBED "E1/4 S2 BT" WITH X-CHOP AND TAG BEARS S02°W 10.2' TO A SPIKE AT SIDE CENTER.  
LAT AND LONG PER GARMIN ETREX HAND HELD GPS:  
N: 43°46'35.6" W: 123°50'56.5"

CORNER NOTE 7

SECTION CORNER SECTIONS 1, 2, 11 & 12, POINT IDENTIFIER 600600  
FOUND MONUMENT:  
A 1" IRON PIPE WITH 2 1/2" BRASS CAP MARKED "T21S S1 S2 S11 S12 R10W 1967" PER CS FILE 54/1-37.  
SET STEEL POST ALONGSIDE.  
FOUND BT'S:  
A 19" FIR WITH HEALED FACE AND TAG BEARS N09°E 15.6'.  
A 26" FIR WITH HEALED FACE AND TAG BEARS S76°45'W 8.1', NO RECORD.  
FOUND BO'S:  
A STEEL FENCE POST BEARS NORTH 5.0'.  
A STEEL FENCE POST BEARS WEST 1.0'.  
NEW BT'S MARKED:  
A 17" FIR, FACE SCRIBED "NW S12 BT" WITH X-CHOP AND TAG BEARS S73°E 22.2' TO A SPIKE AT SIDE CENTER.  
A 20" FIR, FACE SCRIBED "SW S2 BT" WITH X-CHOP AND TAG BEARS N38°W 37.5' TO A SPIKE AT SIDE CENTER.  
LAT AND LONG PER GARMIN ETREX HAND HELD GPS:  
N: 43°46'09.5" W: 123°50'56.6"

CORNER NOTE 8

1/4 CORNER SECTIONS 1 & 12, POINT IDENTIFIER 640600  
FOUND MONUMENT:  
A 1" IRON ROD WITH 2 1/2" BRASS CAP MARKED "T21S 1/4 S1 S12 R10W 1981" PER CS FILE 61/19-26. SET STEEL POST ALONGSIDE.  
FOUND BT'S:  
A ORIGINAL 32" CEDAR WITH HEALED FACE BEARS S80°W 19.8'.  
PLACED NEW TAG ON BT.  
A 72" FIR STUMP WITH HEALED FACE AND TAG BEARS N63°E 40.3'.  
A 22" HEMLOCK WITH HEALED FACE BEARS S62°30'E 28.1'.  
PLACED NEW TAG ON BT.  
NEW BT'S MARKED:  
A 15" ALDER, BARK SCRIBED "S1/4 S1 BT" WITH X-CHOP AND TAG BEARS N38°E 25.6' TO A SPIKE AT SIDE CENTER.  
A 9" ALDER, BARK SCRIBED "S1/4 S1 BT" WITH X-CHOP AND TAG BEARS N19°W 15.7' TO A SPIKE AT SIDE CENTER.  
LAT AND LONG PER GARMIN ETREX HAND HELD GPS:  
N: 43°46'09.4" W: 123°50'20.3"

CORNER NOTE 9

CLOSING CORNER SECTIONS 1 & 12 ONLY EAST, POINT IDENTIFIER 700600  
FOUND MONUMENT:  
A 1" IRON PIPE WITH 2 1/2" BRASS CAP MARKED "T21S R10W S1 S12 T9W 1982" PER CS FILE 61/30-11.  
SET STEEL POST ALONGSIDE.  
FOUND BT'S:  
A ROTTEN 36" FIR STUMP BEARS N10°W 28.4'.  
A ROTTEN 30" FIR STUMP WITH R.R. SPIKE BEARS N03°E 56.9'.  
FOUND BO'S:  
A 5/8" IRON ROD WITH 1 1/2" ALUMINUM CAP MARKED "BO 1" BEARS S60°E 102.52'.  
A SPIKE IN ROCK MARKED "BO 2" BEARS S57°30'W 172.08'.  
NEW BT'S MARKED:  
A 16" FIR, FACE SCRIBED "X BT" WITH X-CHOP AND TAG BEARS N20°E 31.5' TO A SPIKE AT SIDE CENTER.  
A 23" FIR, FACE SCRIBED "NE S12 BT" WITH X-CHOP AND TAG BEARS S20°W 17.8' TO A SPIKE AT SIDE CENTER.  
LAT AND LONG PER GARMIN ETREX HAND HELD GPS:  
N: 43°46'10.1" W: 123°49'28.0"

CORNER NOTE 10

CLOSING CORNER SECTIONS 6 & 7 ONLY WEST, POINT IDENTIFIER 100600  
FOUND MONUMENT:  
A 1" IRON PIPE WITH 2 1/2" BRASS CAP MARKED "T21S R10W CC S6 S7 R9W 1982" PER CS FILE 61/30-12. 1 3/4" IRON PIPE ALONGSIDE.  
FOUND BT'S:  
A 69" FIR STUMP WITH HEALED FACE AND TAG BEARS N35°30'E 69.4'.  
A 24" FIR STUMP WITH VISIBLE SCRIBE IN FACE BEARS N85°E 27.8'.  
A 10" CEDAR STUMP WITH HEALED FACE AND TAG BEARS S86°E 48.1'.  
A 67" ROTTEN FIR STUMP WITH NO VISIBLE MARKS BEARS S52°E 118.7'.  
FOUND BO:  
A RAILROAD SPIKE STAMPED "BO" IN 24" FIR STUMP BEARS S55°30'E 53.6'.  
NEW BT'S MARKED:  
A 12" FIR, FACE SCRIBED "X BT" WITH X-CHOP AND TAG BEARS S23°W 4.5' TO A SPIKE AT SIDE CENTER.  
A 16" FIR, FACE SCRIBED "SW S6 BT" WITH X-CHOP AND TAG BEARS N25°E 11.0' TO A SPIKE AT SIDE CENTER.  
NEW BO SET:  
A STEEL POST BEARS WEST 1.5'.  
LAT AND LONG PER GARMIN ETREX HAND HELD GPS:  
N: 43°46'01.5" W: 123°49'28.4"

CORNER NOTE 11

S1/4 CORNER SECTION 6 ONLY SOUTH, POINT IDENTIFIER 140600  
MONUMENT SET:  
A 5/8" X 6" IRON ROD WITH PLASTIC CAP MARKED "ESTABROOK LS2703" IN ROCK FACE.  
FOUND BT'S:  
A 42" FIR WITH HEALED FACE BEARS N52°E 117.5'.  
PLACED NEW TAG ON BT.  
A 36" FIR WITH HEALED FACE BEARS N72°W 47.4'.  
PLACED NEW TAG ON BT.  
NEW BT'S MARKED:  
A 26" FIR, FACE SCRIBED "X BT" WITH X-CHOP AND TAG BEARS S42°E 82.2' TO A SPIKE AT SIDE CENTER.  
A 16" ALDER, BARK SCRIBED "X BT" WITH X-CHOP AND TAG BEARS S04°W 55.7' TO A SPIKE AT SIDE CENTER.  
BO SET:  
A STEEL FENCE POST BEARS WEST 7.0'.  
LAT AND LONG PER GARMIN ETREX HAND HELD GPS:  
N: 43°46'02.3" W: 123°49'09.5"

DRAWN BY:	JLE	DATE:	1/25/2022
CHECKED BY:	TJE	DRAWING NO.:	DOECRK2
JOB NO.:	2021-102	SHEET	2 OF 2

MAP FILE M180-48B

MAP FILE M180-48B