

PROPERTY SURVEY LOCATED IN THE NW1/4 & SW1/4 OF SECTION 7,  
TOWNSHIP 20 SOUTH, RANGE 9 WEST, W.M., DOUGLAS COUNTY, OREGON.

SURVEY FOR: ROSEBURG RESOURCES CO.  
PO BOX 1088, ROSEBURG, OR 97470

SURVEY BY: ESTABROOK LAND SURVEYING, INC.  
PO BOX 574, LAKESIDE, OR 97449

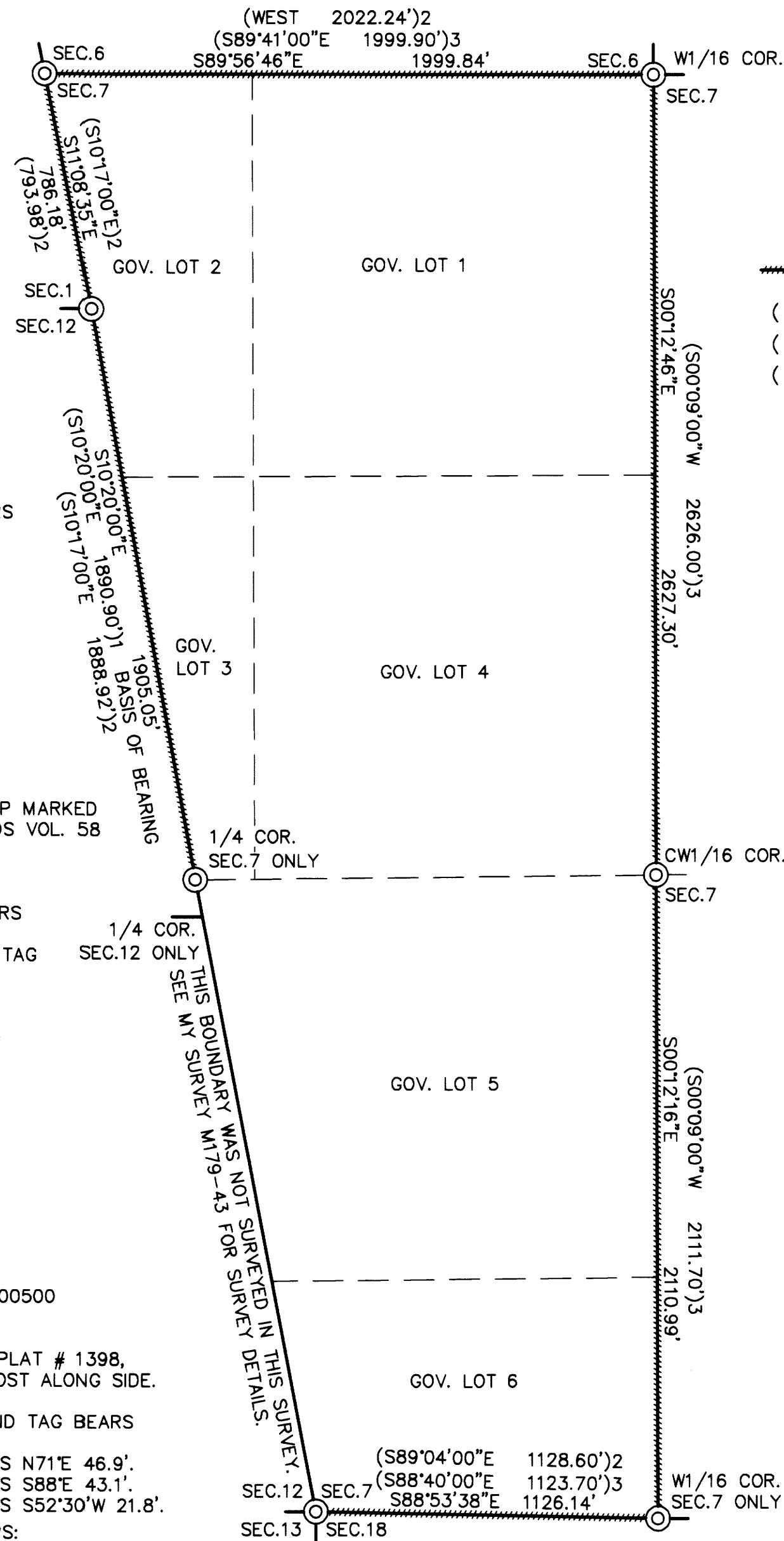
FILED  
Date: 1-11-2022 By: JC  
This survey consists of:  
Map: M 180-35  
Narrative: C.S. 65/110-1  
Corner Rpt.:  
DOUGLAS COUNTY  
SURVEYOR

CLOSING CORNER SECTIONS 6 & 7, PLSS 100600  
FOUND MONUMENT:  
A 2" IRON PIPE WITH BRASS CAP MARKED "T20S R9W R10W  
S6 S7 1968" PER CS FILE 53/66-68.  
FOUND BT'S:  
AN ORIGINAL 43" CEDAR WITH HEALED FACE AND TAG BEARS N37°E 34.3'.  
AN ORIGINAL 40" CEDAR STUMP WITH TAG BEARS S82°30'E 61.4'.  
NEW BT MARKED:  
A 30" MAPLE, BARK SCRIBED "X BT" WITH X-CHOP AND TAG BEARS  
N72°W 36.1' TO A SPIKE AT SIDE CENTER.  
NEW BO'S SET:  
A STEEL POST BEARS NORTH 1.5'.  
A STEEL POST BEARS EAST 1.5'.  
LAT. AND LONG. PER GARMIN ETREX HAND HELD GPS:  
N: 43°51'22.2" W: 123°49'38.6"

SECTION CORNER SECTIONS 1 & 12, PLSS 100568  
FOUND MONUMENT:  
2" IRON PIPE PER DCSO RECORDS VOL. 1 PAGE 267.  
THE RECORD BRASS CAP IS NOW BROKEN OFF.  
FOUND BT'S:  
A 51" FIR WITH HEALED FACE BEARS S31°W 27.7'. PLACED  
NEW TAG ON BT.  
A 44" CEDAR WITH ROTTEN FACE BEARS N65°W 7.2'. PLACED  
NEW TAG ON BT.  
NEW BT MARKED:  
A 10" FIR, FACE SCRIBED "X BT" WITH X-CHOP AND TAG BEARS  
S31°E 12.9' TO A SPIKE AT SIDE CENTER.  
NEW BO SET:  
A STEEL POST BEARS NORTH 1.0'.  
LAT. AND LONG. PER GARMIN ETREX HAND HELD GPS:  
N: 43°51'12.1" W: 123°49'46.9"

1/4 CORNER SECTION 7 ONLY, PLSS 100540  
FOUND MONUMENT:  
A 2 1/2" STAINLESS STEEL PIPE WITH 3 1/2" BRASS CAP MARKED  
"T20S R10W T20S R9W 1/4 S7 2006" PER DCSO RECORDS VOL. 58  
PAGES 23084-23085. SET STEEL POST ALONG SIDE.  
FOUND BT'S:  
AN 18" FIR WITH HEALED FACE AND TAG N26°E 16.9'.  
A 6" MAPLE WITH VISIBLE SCRIBE IN FACE AND TAG BEARS  
S48°30'E 26.0'.  
A 26" MAPLE, FACE SCRIBED "X BT" WITH X-CHOP AND TAG  
BEARS S16°W 20.1' TO A SPIKE AT SIDE CENTER.  
LAT. AND LONG. PER GARMIN ETREX HAND HELD GPS:  
N: 43°50'53.7" W: 123°49'41.7"

SECTION CORNER SECTIONS 7, 12, 13 & 18, PLSS 100500  
FOUND MONUMENT:  
A 2" IRON PIPE WITH 2 1/2" BRASS CAP MARKED  
"T20S R10W R9W S7 S12 S13 S18 1952" PER BLM PLAT # 1398,  
DCSO RECORDS VOL. 27 PAGE 11678. SET STEEL POST ALONG SIDE.  
FOUND BT'S:  
AN ORIGINAL 63" FIR WITH VISIBLE BARK SCRIBE AND TAG BEARS  
N30°W 29.7'.  
A 30" HEMLOCK WITH HEALED FACE AND TAG BEARS N71°E 46.9'.  
A 24" HEMLOCK WITH HEALED FACE AND TAG BEARS S88°E 43.1'.  
A 32" HEMLOCK WITH HEALED FACE AND TAG BEARS S52°30'W 21.8'.  
LAT. AND LONG. PER GARMIN ETREX HAND HELD GPS:  
N: 43°50'33.0" W: 123°49'35.9"



W1/16 COR. SECTIONS 6 & 7  
FOUND MONUMENT:  
A 1" IRON PIPE PER BLM / IP ADMINISTRATIVE SURVEY, DATED MARCH 31, 1965.  
THE RECORD SURVEY SHOWS A 3/4" IRON PIPE. SET STEEL POST ALONGSIDE.  
FOUND BT'S:  
A 95" CEDAR WITH ROTTEN FACE AND TAG BEARS N23°E 25.1'.  
A 37" MAPLE WITH HEALED FACE AND TAG BEARS N89°W 25.4'.  
LAT. AND LONG. PER GARMIN ETREX HAND HELD GPS:  
N: 43°51'20.7" W: 123°49'21.4"

- LEGEND
- ⊙ FOUND MONUMENT AS NOTED
  - BOUNDARY LINE MARKED WITH RED FLAGGING, RED TREE BLAZES AND STEEL POSTS.
  - ( ) 1 RECORD PER BLM PLAT #1398
  - ( ) 2 RECORD PER GLO PLAT #1248
  - ( ) 3 RECORD PER BLM / IP ADMINISTRATIVE SURVEY

REGISTERED  
PROFESSIONAL  
LAND SURVEYOR  
*Jerry Lee Estabrook*  
OREGON  
JUNE 30, 1995  
JERRY LEE ESTABROOK  
2703  
EXPIRES 12/31/23

SCALE 1" = 400'

NARRATIVE

THE PURPOSE OF THIS SURVEY WAS TO MARK BOUNDARY LINES FOR RESOURCE MANAGEMENT PURPOSES.  
THE PROCEDURE WAS TO TRAVERSE BETWEEN EXISTING RECORD MONUMENTS AS SHOWN HEREON. I THEN MARKED THE BOUNDARY LINES WITH RED FLAGGING, BLAZES PAINTED RED AND STEEL POSTS. EQUIPMENT USED WAS A NIKON NIVO 5.C TOTAL STATION WITH ONBOARD TDS DATA COLLECTOR. ASSISTING PERSONNEL WERE BLUE JAMES, JACK JARRETT AND BRANDON CAMPBELL.  
NOTE: WGS84 LATITUDE AND LONGITUDE ARE PER GARMIN ETREX HAND HELD GPS. THESE POSITIONS ARE NOT SURVEY GRADE AND SHOULD NOT BE USED TO ESTABLISH BOUNDARIES, BUT ARE PROVIDED TO ASSIST IN RESOURCE MANAGEMENT.

BASIS OF BEARING

BASIS OF BEARING IS ASSUMED PER BLM PLAT #1398.

RECORD REFERENCE INFORMATION

BLM PLAT #1398, DATED MARCH 18, 1954.  
GLO PLAT #1248, DATED JUNE 30, 1922.  
BLM / IP ADMINISTRATIVE SURVEY DATED MARCH 31, 1965.

CW1/16 CORNER SECTION 7  
FOUND MONUMENT:  
A 1" IRON PIPE PER BLM / IP ADMINISTRATIVE SURVEY DATED MARCH 31, 1965.  
THE RECORD SURVEY SHOWS A 3/4" IRON PIPE. SET STEEL POST ALONGSIDE.  
NEW BT'S MARKED:  
A 20" MAPLE, BARK SCRIBED "CW1/16 S7 BT" WITH X-CHOP AND TAG BEARS  
S77°E 9.7' TO A SPIKE AT SIDE CENTER.  
A 13" ALDER, BARK SCRIBED "CW1/16 S7 BT" WITH X-CHOP AND TAG BEARS  
N36°W 25.3' TO A SPIKE AT SIDE CENTER.  
LAT. AND LONG. PER GARMIN ETREX HAND HELD GPS:  
N: 43°50'54.5" W: 123°49'20.5"

W1/16 CORNER SECTION 7 ONLY  
FOUND MONUMENT:  
A 1" IRON PIPE PER BLM / IP ADMINISTRATIVE SURVEY, DATED MARCH 31, 1965.  
THE RECORD SURVEY SHOWS A 3/4" IRON PIPE. SET STEEL POST ALONGSIDE.  
FOUND BT:  
A 58" CEDAR WITH TAG BEARS N23°W 13.4'.  
NEW BT MARKED:  
A 13" HEMLOCK, FACE SCRIBED "W1/16 BT" WITH X-CHOP AND TAG BEARS  
S64°W 25.3' TO A SPIKE AT SIDE CENTER.  
LAT. AND LONG. PER GARMIN ETREX HAND HELD GPS:  
N: 43°50'33.1" W: 123°49'20.7"

DRAWN BY: JLE	DATE: 12/13/2021
CHECKED BY: TJE	DRAWING NO.: COON7A
JOB NO.: 2021-53	SHEET 1 of 1

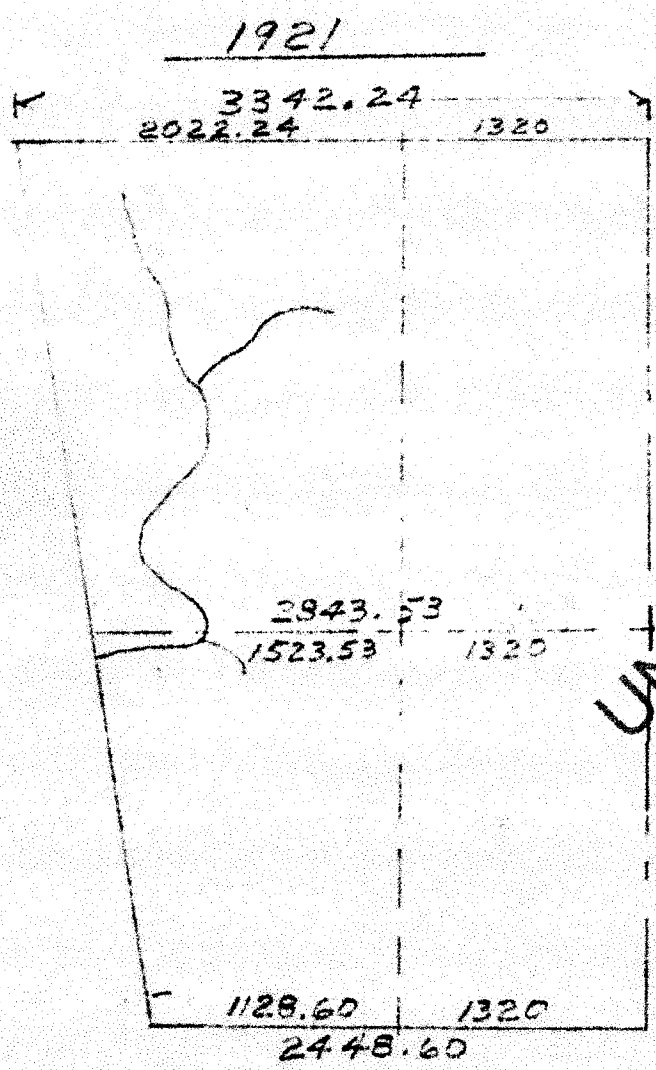
C.S. FILE 65/110-1  
MAP FILE M 180-35

C.S. FILE 65/110-1  
MAP FILE M 180-35

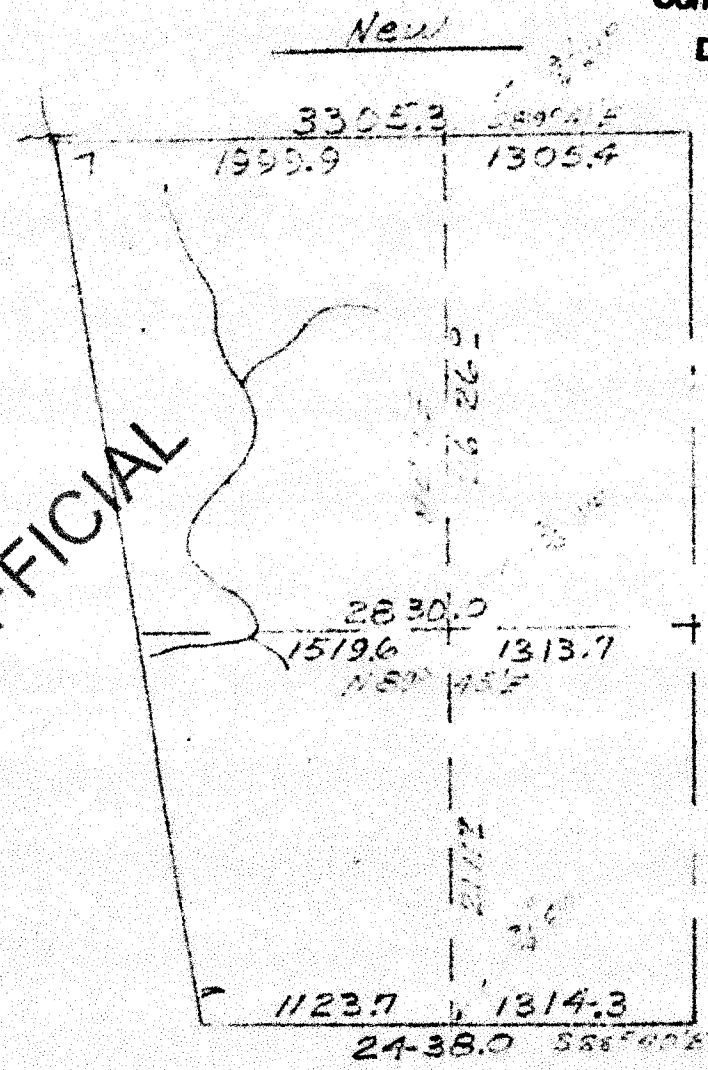
West 1/2 Section 7 T205 R9W

FILED  
Date: 1-11-2022 By: X  
This survey consists of:  
Map: A180-35  
Narrative: CS 65/110-1  
Corner Rpt:

DOUGLAS COUNTY  
SURVEYOR



UNOFFICIAL



1/4 20°30'E

C.S. FILE 65/110-1 11/5

Page 1

Sub Division Spot 7

Begin at the corner <sup>12/7</sup>

T20S R9W ± 10W

Hemlock 8' dia. N71°E 71LKS

" 12 dia. S56°W 33LKS

.04 BTs

Dead Alder 16 Dia N61½°E 37LKS

Alder 16" Dia S69°E 58LKS

Dead Fir 36" Dia S90°E 39LKS

Fir 55" N30°W 45LKS

March 31 1965

Adams 1P

Carson Sit 21°30' Fracture 1P

Sub Mulligan RMC

Mrs. Klein 21E

Cloudy

Va 20°30E

J. L. DANLON CORP.  
THEOMA, WASH. D.C. No. 316

45-56-500  
MAY 1965

Page 3

UNOFFICIAL

270 center line

15+69 center line

126.5'

J. L. DANLON CORP.  
THEOMA, WASH. D.C. No. 316

45-56-500  
MAY 1965

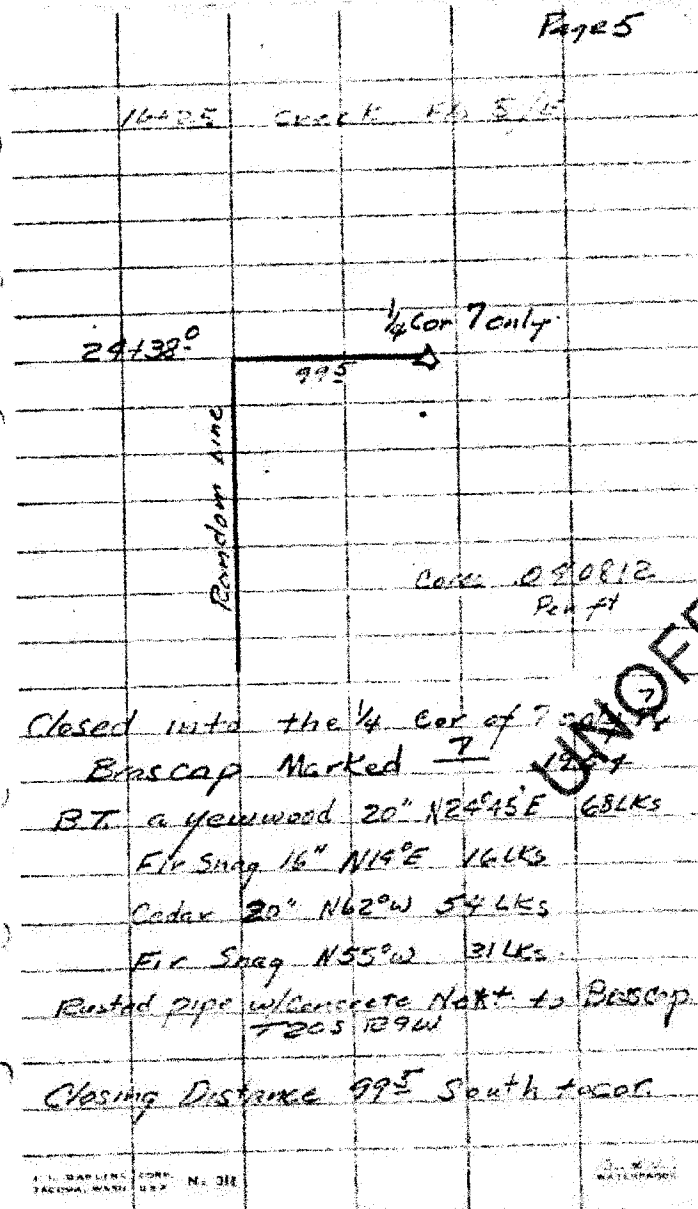
C.S. FILE 65/110-1  
215

Page 2				
	157°	-10%	156°	
1+56°				2x
	146°	-39%	136°	
2+92°				
	156°	-23%	152°	
4+45°				-1
	177°	-16%	174°	
6+20°				
	47°	-24%	45°	
6+65°				
	178°	-82%	131°	
8+03°				
	200°	-43%	183°	
986° 987°				
	200°	-17%	197°	
1188° 1184°				
	92°	-27%	88°	
1273°				
	52°	-45%	47°	
13+20°				
	168°	-61%	143°	
14+63°				
	156°	+45%	142°	
16+06°	-1605°			

Error of 10 Sub Tract

UNOFFICIAL

Page 4				
16+06°	-1605°			
	103°	+91%	150°	
17+57°				
	54°	+78%	42°	
17+99°				
	112°	+66%	93°	
18+93°				
	101°	+59%	87°	
19+80°				
	50°	+57%	43°	
20+23°				
			97°	
21+20°				
	86°	+10%	85°	
22+06°				
	76°	+15%	75°	
22+81°				
	132°	+81%	102°	
23+84°				
	4°	+80%	21°	
2405°				
	45°	+91%	33°	
24+38°				
	(102°	+84%	97°)	Closing Dist. South to car



U.S. MAPLING CORP. FEDERAL MAPS U.S. No. 318

U.S. MAPLING CORP. FEDERAL MAPS U.S. No. 318

Range at corner set by UFS  
CC 647-T205 R29W

Ran East

Came back Found Brass Cap

32 East 04 North

Corrected Dist 33.05

Fall dist 186

Va 20°30E

UNOFFICIAL

April 1, 1965

Adamo IR

Freeze IR

Bob Holliman BLM

Mike Klein UFS

U.S. MAPLING CORP. FEDERAL MAPS U.S. No. 318

U.S. MAPLING CORP. FEDERAL MAPS U.S. No. 318



		Page 9		
11+412 <del>4+412</del>	200°	-38%	1320	✓
13+272	492	+28%	471	✓
12+75 <sup>8</sup> 601			1112	
14+86 <sup>8</sup> 601	392	-36%	362	✓
15+222	1182	-60%	1012	✓
16+232	1202	-22%	1172	✓
17+44 <sup>1</sup>	202	-21%	1952	✓
19+372	592	+56%	515	✓
19+472	1172	+59%	1002	✓
20+88 <sup>5</sup>	1992	+37	1842	✓
22+73 <sup>3</sup>			292	✓
23+02 <sup>3</sup>	862	+47%	775	✓
23+504	23+81?			

UNOFFICIAL

Page 10

12+82	Creek	SE		
18+283	Creek	NE		
10+252	Creek	N		
22+01	Point	Sprink.		



Subdivision of  
Sec 7 T20S R9W

Proportionate West 1/2 Cor South  
Bdy sec 7.

1921 Survey shows the west 1/2 of

South Bdy sec 7 to be 2448°

1954 shows it to be 2436°

We make it 2438°

Per instruction of State-1 note

We use 1921 Survey.  $\text{Egn} = 2448^\circ - 2438^\circ$

Old - New	Orig	X
2448° : 2438°	1320°	13142°
	1128°	11237°
	2448°	2438°

11232 East of Cor <sup>12/17</sup> 13/13 we  
establish west 1/2 cor. (45.56 S. 100)

RP Alum Tag 34" Cedar N23°30'W 12' 1/2

RP Alum Tag 16" Cedar S35°E 32' 1/2

3/4 G.P. 30" pipe April 5 1915  
22 in in ground

Run North V 20°30'E

3+45 Dist

487 Creek SE

UNOFFICIAL

Page 14				
	74°	-5%	73°	✓
0+73°				
	184°	-37%	172°	✓
2+46°				
	65°	-5%	64°	
3+11°				
	84°	-42%	77°	✓
3+88°				
	27°	-16%	26°	✓
4+15°				
	170°	-38%	158°	✓
5+74°				
	152°	+5%	152°	✓
7+27°				
	130°	+39%	121°	✓
8+49°				
	115°	+58%	99°	✓
9+48°				
	52°	+25%	50°	✓
9+49°				
			90°	✓
10+87°				
	200°	-33%	189°	✓
12+77°				

Page 16				
	77°			
12+124°				
	124°	34°		✓
13+14°				
	12°	200°	+6%	179°
15+13°				
	1656°	148°	+32%	144°
16+58°				
	190°	+14%	188°	✓
18+45°				
	118°	+18%	116°	✓
19+11°				
	77°	+16%	77°	✓
21+38°				
				177°
22+153°				
	124°	+75%	99°	✓
23+14°				
	130°	+74%	104°	✓
24+19°				
	44°	+33%	41°	✓
24+21°				
	50°	+18%	49°	✓
25+10°				
	118°	+47%	106°	✓
26+16°				

UNOFFICIAL

132 48 Creek to E to S

15000 10000

along Creek

20+38<sup>3</sup> N S 1/4 line = 15+17<sup>3</sup> R/LR E/W

21+44 Creek at Point to SE

along top of Spar

36+60 Creek

3150 PLine = 36+17<sup>5</sup> N 1/4 Cor 3/5 Point

3+56 PLine = 36+152 Corrected line  
(N&S 1/4 line)

UNOFFICIAL

Page 18

26+168 <sup>0</sup>			
	200°	+66%	166 <sup>0</sup>
27+83 <sup>0</sup>			
	60°	+42%	55 <sup>0</sup>
28+39 <sup>0</sup>			
	184°	+26%	198 <sup>0</sup>
30+17 <sup>0</sup>			
	49°	+72%	39 <sup>0</sup>
30+58 <sup>0</sup>			
	48°	+30%	46 <sup>0</sup>
31+04 <sup>0</sup>			
			32 <sup>0</sup>
31+36 <sup>0</sup>			
	94°	-47%	85 <sup>0</sup>
32+21 <sup>0</sup>			
	67°	-7%	62 <sup>0</sup>
32+28 <sup>0</sup>			
	200°	+29%	172 <sup>0</sup>
34+80 <sup>0</sup>			
	87°	+81%	67 <sup>0</sup>
35+49 <sup>0</sup>			
	86°	+76%	69 <sup>0</sup>
36+17 <sup>0</sup>			
	30°	-73%	24 <sup>0</sup>
36+41 <sup>0</sup>			

Page 20

36+91 <sup>0</sup>			
			29 <sup>0</sup>
36+70 <sup>0</sup>			
	83°	-66%	114 <sup>0</sup>
37+85 <sup>0</sup>			
	200°	-80%	156 <sup>0</sup>
37+44 <sup>0</sup>			
	75°	-48%	136 <sup>0</sup>
40+77 <sup>0</sup>			
	90°	-47%	81 <sup>0</sup>
41+58 <sup>0</sup>			
	146°	-44%	57 <sup>0</sup>
42+16 <sup>0</sup>			
	59°	-44%	144 <sup>0</sup>
43+61 <sup>0</sup>			
	25°	-19%	65 <sup>0</sup>
44+26 <sup>0</sup>			
			120 <sup>0</sup>
45+46 <sup>0</sup>			
	26°	+5%	81 <sup>0</sup>
46+20 <sup>0</sup>			
			70 <sup>0</sup>
46+91 <sup>0</sup>			
	35°	-59%	112 <sup>0</sup>
47+40 <sup>0</sup>			

UNOFFICIAL

36+60 Top of Ridge

43+62 Creek Fl<sup>o</sup> NW

WEST  
Set 1/4 Cor. Sec 647 T205 R9W

Old	New	Old	New
3342.24	3305.3	1320	1305.4
		2022.24	1999.2
		3342.24	3305.3

over

Begin of 1/4 Sec 7 T209 R9W  
on West Boundary  
Run East S88°30'E to 20°30'E  
to 19°E  
Brass Cor. 1/4 Sec 7 - 1924

April 7 1965  
Glass 1E  
Fence 1E  
Bull. McLean 2E  
Mike McLean 1965

UNOFFICIAL

Page 22

From Sta 19499? East from  
 C.Cor.  $\frac{6}{7}$  T205 R9W offset South  
 12 $\frac{1}{2}$  stab  $\frac{1}{16}$  Cor.

Closing distance on N/S  $\frac{1}{16}$  line  
 132 East to  $\frac{1}{16}$  Cor.

Page 24

	200°	-35%	187° ✓
1+87°			150? ✓
3+17 $\frac{1}{2}$	200°	-36%	186° ✓
5+05 $\frac{1}{2}$			20?
5+26 $\frac{1}{2}$	200°	-83%	153° ✓
6+80 $\frac{1}{2}$	76°	-42%	70° ✓
7+30 $\frac{1}{2}$	184°	-5%	183° ✓
9+45 $\frac{1}{2}$	27°	-5%	24° ✓
9+58 $\frac{1}{2}$	76°	-73%	6 $\frac{1}{2}$ ✓
10+19 $\frac{1}{2}$	101°	-76%	80 $\frac{1}{2}$ ✓
11+00 $\frac{1}{2}$	154°	-70%	124° ✓
12+26 $\frac{1}{2}$	57°	-81%	55° ✓
12+52 $\frac{1}{2}$			

UNOFFICIAL

Page 25

4170 & Rd

9739E Top Spur

12200 Draw NE

L. L. DARLING CORP. No. 318  
TACOMA, WASH. ORA

UNOFFICIAL

Page 27

Old 13220 <sup>2100</sup> x 13137

Old 2843.53 New 2830.52

15137 Eudem tie

59 offset Correction

15190 West

13137 = Proportions

3104 = East

23 = West to  $\frac{1}{16}$  Cor., NE Cor. lots SE Cor. lot 9

$\frac{3}{4}$  in Gas pipe

R.P. Trees

16" diam 503°W 46°E

48" diam N 89°E 88°E

L. L. DARLING CORP. No. 318  
TACOMA, WASH. ORA

C.S. FILE 65/110-1

14/15

829

Page 26

~~1244~~

20° 142° -25° 137.7 ✓

~~14724~~

137 1022 -65° 93.7 ✓

~~15442~~

15+137 E = 2065 E N

From Note furnished By B.L.M.  
 Surveyed by Dawson, F., Sartiz, C.  
 Baughman, S.

Miscel 1/4 Cor Sec 7 & 8 3017 ft  
 intersection of Random Line  
 on North/South & 20138.3 N 15417.3 E  
 would give a fall dist. 83.4 North  
 on Random Line or 21112

Running on BLM Cal. Bear 589° 30' East

East West 1/2 tie to Random N.

15+137 E = 2065 E N. By PLM Line  
 Tie to 1/4 Cor.

46.3 North and proportionate dist  
 of 582 East to Straight Line  
 Between 1/4 Coris

Page 27

619 1320.0 EWT x 1313.2

618 2843.53 " " New 2830.12

15137 Random tie

59 offset Correction

15196 West

13127 = Proportionate

13104 = East

23 = West to 1/4 Cor. NE Cor LOTS

3/4 in GI pipe

RP Trees

16" Alder S 03° W 46.3

48" Hem N 89° E 88.2

F. & C. CARLSON ENGINEERS  
 TACOMA, WASH. No. 218

1917-1918  
 1919-1920

C.S. FILE 65/1104  
 15/15