

MAP OF SURVEY

SURVEY FOR: LONE ROCK TIMBERLAND CO.
 P.O. BOX 1127 ROSEBURG, OREGON 97470
 SURVEY BY: LONE ROCK TIMBER MANAGEMENT COMPANY
 P.O. BOX 1127 ROSEBURG, OREGON 97470

SOUTH 1/2 OF SECTION 18, TOWNSHIP 29 SOUTH, RANGE 4 WEST W.M.

TRACT: BMH7204

DATE: SEPTEMBER 2021

NARRATIVE

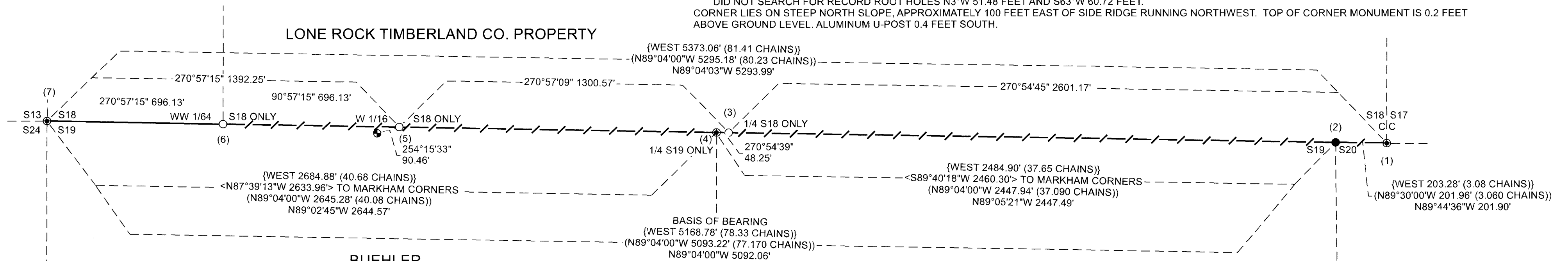
THE PURPOSE OF THIS SURVEY IS TO SET CORNER MONUMENTS AND MARK PROPERTY LINES FOR THE SOUTH PROPERTY LINE OF THE LONE ROCK TIMBERLAND CO. PROPERTY LOCATED IN PORTIONS OF THE SOUTHEAST 1/4 AND SOUTHWEST 1/4 (GOVERNMENT LOTS 3,4,5 AND 6) OF SECTION 18, TOWNSHIP 29 SOUTH, RANGE 4 WEST W.M. AS DESCRIBED IN DEED NUMBER 1984-4074 FILED IN THE DOUGLAS COUNTY RECORDS, FOR TIMBER MANAGEMENT PURPOSES. IN 1959 (CS42/270) MARKHAM IMPROPERLY SUBDIVIDED SECTION 18 AND SET MONUMENTS FOR BOTH THE SOUTH 1/4 OF SECTION 18 AND THE NORTH 1/4 OF SECTION 19. SUBSEQUENT SURVEYS AND PROPERTY MANAGEMENT WERE CONDUCTED USING MARKHAM'S CORNERS UNTIL THE ERRORS WERE DISCOVERED BY THE BLM IN THEIR 1990 DEPENDENT RESURVEY (6316) OF SECTIONS 17, 18 AND 19. WE INITIATED OUR SURVEY AT THE CLOSING CORNER OF SECTIONS 17 AND 18 (CORNER 1) AND RAN A RANDOM CLOSED LOOP TRAVERSE THROUGH THE STANDARD NORTHEAST SECTION CORNER OF SECTION 19 (CORNER 2) TO THE NORTH 1/4 CORNER OF SECTION 19 (CORNER 4). WE THEN RAN A RANDOM CLOSED LOOP TRAVERSE FROM THE NORTH 1/4 OF SECTION 19 THROUGH THE PREVIOUSLY SET WEST 1/16 CORNER (M60-35) OF SECTION 19 TO THE SOUTHWEST CORNER OF SECTION 18 (CORNER 7). WE FOUND THE NORTH 1/4 CORNER OF SECTION 19 TO BE APPROXIMATELY 1 FOOT OFF LINE BETWEEN THE STANDARD NORTHEAST CORNER OF SECTION 19 AND THE SOUTHWEST CORNER OF SECTION 18. WE CONSULTED WITH THE BLM STATE OFFICE AND DETERMINED THAT ALTHOUGH THE NORTH 1/4 CORNER OF SECTION 19 WAS NOT ON THE SECTION LINE, THE 1990 BLM SURVEY WAS A CAREFUL RETRACEMENT OF THE SECTION LINE AND THEREFORE THE MONUMENT IN PLACE CONTROLS THE SECTION LINE OF BOTH SECTIONS. WE ALSO CONSULTED WITH THE BLM STATE OFFICE CONCERNING THE PLACEMENT OF THE SOUTH 1/4 CORNER OF SECTION 18 DUE TO CONCERNS OVER THE GLO 1899 LINE NOTES AND THE GLO 1899 PLAT OF SECTION 18. WILLIAM F. BRIGGS RESURVEYED THE SECTION LINE BETWEEN SECTIONS 18 AND 19 IN 1899 AND RE-ESTABLISHED THE 1/4 CORNER AS COMMON AT THE TIME OF HIS SURVEY. THE SUBSEQUENT PLAT OF SECTION 18 FROM BRIGGS' SURVEY MADE SEPARATE 1/4 CORNERS FOR SECTIONS 18 AND 19 AND LOTTED SECTION 18 FOR DISPOSAL. WE CONTACTED THE BLM STATE OFFICE FOR CLARIFICATION AS TO THE PROPER POSITION OF THE SOUTH 1/4 CORNER OF SECTION 18 AND DETERMINED THAT THE PROPER PROCEDURE FOR ESTABLISHING THE SOUTH 1/4 CORNER OF SECTION 18 ONLY IS TO PROPORTION THE 1/4 CORNER BASED ON THE RECORD LOTTED DISTANCES ALONG THE SOUTH LINE OF SECTION 18, WHILE HOLDING THE FOUND BLM ACCEPTED MONUMENTS FOR CONTROL OF THE SECTION LINE (SEE CS 63/166 FOR CORRESPONDENCE). THEREFORE, WE PLACE OUR SOUTH 1/4 CORNER OF SECTION 18 (CORNER 3) ON LINE BETWEEN FOUND MONUMENTS AT PROPER PROPORTION. WE THEN PROPERLY PROPORTIONED THE WEST 1/16 (CORNER 5) AND THE WEST WEST 1/64 (CORNER 6), OF SECTION 18, ON LINE BETWEEN FOUND MONUMENTS. DURING THE COURSE OF OUR SURVEY WE FOUND RUPPERT'S 5/8" IRON ROD AT THE WEST 1/16 OF SECTION 19 (SET IN SURVEY M60-35) NEAR A FENCE LINE IN VARIOUS STATES OF DISREPAIR, TO BE 26 FEET SOUTH OF THE TRUE SECTION LINE. RUPPERT'S WEST 1/16 WAS SET UTILIZING MARKHAM'S NORTH 1/4 OF SECTION 19 WHICH THE BLM DETERMINED TO BE IN ERROR. THEREFORE, WE CHOOSE NOT TO ACCEPT RUPPERT'S WEST 1/16TH MONUMENT FOR CONTROL OF THE SECTION LINE. THE PROPERTY LINES SHOWN AS MARKED ON THIS MAP WERE POSTED WITH ALUMINUM LONE ROCK TIMBER TAGS, 5 1/2 FOOT TALL GALVANIZED STEEL U-POSTS, BLAZED AND PAINTED TREES WITH FLUORESCENT RED ORANGE PAINT AND RIBBONED WITH RED "PROPERTY LINE" AND FLUORESCENT BLUE RIBBON. BEARING TREES WERE FACED AND SCRIBED AT THE ROOT COLLAR, AND BEARING TREE TAGS PLACED FACING THE CORNER MONUMENT. BEARING TREE DISTANCES ARE TO AN ALUMINUM NAIL IN THE SIDE CENTER AND BEARINGS WERE DERIVED FROM ANGULAR MEASUREMENTS TO AN ALUMINUM NAIL IN THE FACE OF THE TREE. THIS SURVEY WAS CONDUCTED USING A TOPCON ES65 TOTAL STATION WITH JAKE FURGERSON, WESTON ADDINGTON, AND IGNACIO ROMAN ASSISTING ME.

FILED
 DATE: 10/28/2021 BY: DJ
 THIS SURVEY CONSISTS OF:
 MAP: M180-11
 NARRATIVE:
 CORNER RPT:
 DOUGLAS COUNTY
 SURVEYOR

CORNER NOTES

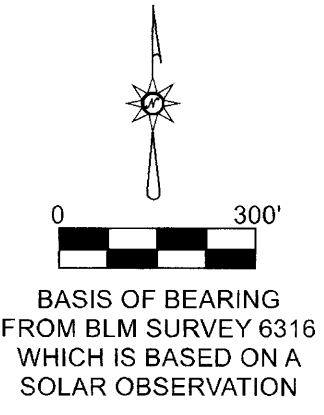
- CLOSING CORNER OF SECTION 17 AND 18 T29S R4W GCDB 203400
 FOUND 1988 BLM BRASS CAP MARKED T29S R4W CC S18 S17 S20.
 - 24" DOUGLAS-FIR BEARS N16 1/4"E 36.6 FEET (RECORD N15"E 36.3 FEET) WELL HEALED FACE AND BLM TAG.
 - 26" DOUGLAS-FIR BEARS N73 1/2"W 35.5 FEET (RECORD N73"W 35.97 FEET) WELL HEALED FACE AND BLM TAG.
 - COUNTY SURVEYORS OFFICE BRASS CAP MARKED T29S R4W S18 S17 BEARS NORTH 1.15 FEET. TOP OF CORNER MONUMENT IS 1.25 FEET ABOVE GROUND LEVEL.
 BEARING TREES FOR COUNTY BRASS CAP
 - 13" X 5' TALL DOUGLAS-FIR STUMP FOUND AT RECORD N55"W 50.16 FEET. PARTIALLY VISIBLE SCRIBE AND BLM TAG.
 - 24" DOUGLAS-FIR BEARS N42 1/2"E 21.7 FEET (RECORD N42 1/2"E 21.78 FEET) WELL HEALED FACE AND BLM TAG.
 - 22" X 4' TALL DOUGLAS-FIR STUMP FOUND AT RECORD N66 1/4"W 19.8 FEET. OPEN BURNED FACE WITH NO VISIBLE SCRIBING.
 CORNER LIES AT NORTH EDGE OF RECENT CLEAR CUT ON SOUTH FACING SLOPE APPROXIMATELY 150 FEET SOUTH OF GRAVEL BLM ROAD # 29-4-20.0. TOP OF BLM CORNER MONUMENT IS 0.3 FEET ABOVE GROUND LEVEL. WE PLACE 5 1/2 FT. TALL STEEL U-POST 0.4 FEET EAST.
- NORTHEAST SECTION CORNER OF SECTION 19 GCDB 200400
 FOUND COUNTY SURVEYORS OFFICE BRASS CAP MARKED T29S R4W S18 S19 S20
 - 22" DOUGLAS-FIR BEARS S69 3/4"E 30.5 FEET (RECORD S69"E 31.02 FEET) NO VISIBLE FACE FOUND, HAS BLM TAG
 - 14" X 7' TALL FIR STUMP BEARS S40"W 33.1 FEET (RECORD S40"W 33.66 FEET) NO VISIBLE FACE, HAS BLM TAG.
 - BADLY ROTTEN REMAINS OF OAK STUMP FOUND AT RECORD N44"W 16.5 FEET. NO REMAINING EVIDENCE OF SCRIBE.
 CORNER LIES AT NORTHWEST CORNER OF RECENT CLEAR CUT ON EAST FACING SLOPE, 260 FEET EAST OF GRAVEL BLM ROAD # 29-4-20.0. TOP OF CORNER MONUMENT IS 1.4 FEET ABOVE GROUND LEVEL. STEEL T-POST BEARS WEST 0.8 FEET. WE PLACE 5 1/2 FT. TALL STEEL U-POST 0.3 FEET EAST.
- SOUTH QUARTER CORNER OF SECTION 18 GCDB 141400
 SET 5/8" X 40" IRON ROD WITH ALUMINUM CAP MARKED LONE ROCK TIMBER T29S R4W 1/4 S18 2021 85006 PLS
 - 13" DOUGLAS-FIR BEARS N29 3/4"E 9.9 FEET. WE SCRIBE 1/4 S18 BT AND TAG.
 - 16" DOUGLAS-FIR BEARS N23 1/2"W 27.0 FEET. WE SCRIBE 1/4 X BT AND TAG.
 - 14" DOUGLAS-FIR BEARS S21"E 18.0 FEET. WE SCRIBE X BT AND TAG. WE MARKED THIS TREE IN SECTION 19 BECAUSE THE BEARING TREES IN SECTION 18 WILL LIKELY BE CUT IN THE NEXT 3-5 YEARS.
 - FOUND MARKHAM IRON PIPE BADLY BENT TO THE WEST BEARS S1°09'18"E 57.29 FEET TO WHERE THE PIPE ENTERS THE GROUND.
 BEARING TREES FOR MARKHAM IRON PIPE
 - 26" X 6' TALL DOUGLAS-FIR STUMP FOUND AT RECORD N52"E 8.0 FEET. VISIBLE "BT" BARK SCRIBE AND BLM TAG
 - 30 X 6' TALL DOUGLAS-FIR STUMP FOUND AT RECORD N43"W 21.6 FEET. NO VISIBLE BARK SCRIBING, HAS BLM TAG
 SOUTH 1/4 CORNER LIES ON WEST FACING SLOPE APPROXIMATELY 100 FEET WEST OF GRAVEL ROAD. TOP OF SOUTH 1/4 CORNER MONUMENT IS 0.1 FEET ABOVE GROUND LEVEL. WE PLACE 5 1/2 FT. TALL STEEL U-POST 1.0 FEET EAST.

- NORTH QUARTER CORNER OF SECTION 19 GCDB 140400
 FOUND 1987 BLM BRASS CAP MARKED T29S R4W 1/4 S19
 - 17" DOUGLAS-FIR BEARS S27 1/2"W 32.8 FEET (RECORD S30"W 33.66 FEET) WELL HEALED FACE AND LRT LOCATION TAG
 - 14" DOUGLAS-FIR FOUND AT RECORD S72"E 2.64 FEET. WELL HEALED FACE AND LRT LOCATION TAG
 - FOUND MARKHAM IRON PIPE BEARS S12°46'59"W 57.62 FEET. TOP OF MONUMENT IS 0.4 FEET ABOVE GROUND LEVEL.
 BEARING TREES FOR MARKHAM IRON PIPE
 - 28" DOUGLAS-FIR FOUND AT RECORD S30"E 16.5 FEET. WELL HEALED FACE AND BLM TAG.
 - 20" DOUGLAS-FIR FOUND AT RECORD N45"E 14.5 FEET. HEALED FACE AND BLM TAG.
 CORNER LIES AT BOTTOM OF WEST SLOPE ON EAST EDGE OF DRY DRAW RUNNING NORTH-SOUTH. TOP OF CORNER MONUMENT IS 0.2 FEET ABOVE GROUND LEVEL. WE PLACE 5 1/2 FT. TALL STEEL U-POST 1.0 FEET NORTH.
- WEST 1/16TH CORNER OF SECTION 18 GCDB 121400
 SET 5/8" X 40" IRON ROD WITH ALUMINUM CAP MARKED LONE ROCK TIMBER WEST 1/16 S18 2021 85006 PLS
 NO SUITABLE TREES IN SECTION 18 NEAR THE CORNER MONUMENT. WE MARK THE FOLLOWING TREES IN SECTION 19.
 - 15" DOUGLAS-FIR BEARS S 5 1/2" E 36.9 FEET. WE SCRIBE BT AND TAG.
 - 16" DOUGLAS-FIR BEARS S 38" W 30.5 FEET. WE SCRIBE X BT AND TAG.
 - FOUND RUPPERT (M60-35) 5/8" IRON ROD BEARS S74°15'33" W 90.46 FEET.
 CORNER LIES IN SOUTH EDGE OF RECENTLY CONSTRUCTED RIDGETOP LANDING. TOP OF CORNER MONUMENT IS 0.2 FEET ABOVE GROUND LEVEL. WE PLACE 5 1/2 FT. TALL STEEL U-POST 1.0 FEET NORTH.
- WEST-WEST 1/64TH CORNER OF SECTION 18 GCDB 110400
 SET 5/8" X 40" IRON ROD WITH ALUMINUM CAP MARKED LONE ROCK TIMBER WW 1/64 S18 2021 85006 PLS
 - 18" DOUGLAS-FIR BEARS N 3/4" E 47.9 FEET. WE SCRIBE "WW 1/64 S18 BT" AND TAG
 NO OTHER SUITABLE TREES IN SECTION 18 NEAR THE CORNER MONUMENT. WE MARK THE FOLLOWING TREES IN SECTION 19.
 - 14" DOUGLAS-FIR BEARS S37"W 28.3 FEET. WE SCRIBE "BT" AND TAG
 CORNER LIES ON WEST FACING SLOPE ON EAST EDGE OF OLD CAT ROAD RUNNING NORTH-SOUTH, ON SMALL FLAT. TOP OF CORNER MONUMENT IS 0.2 FEET ABOVE GROUND LEVEL. WE PLACE 5 1/2 FT. TALL STEEL U-POST 1.0 FEET NORTH.
- SECTION CORNER OF SECTIONS 13, 18, 19 AND 24 GCDB100400
 FOUND 1957 BLM BRASS CAP MARKED T29S R5W S13, S24 R4W S18, S19
 - 24" DOUGLAS-FIR BEARS S 45 1/2"W 44.0 FEET (RECORD S45"W 44.88 FEET) WELL HEALED FACE AND BLM TAG
 - 25" DOUGLAS-FIR BEARS S12"E 26.7 FEET (RECORD S11 1/2"E 25.74 FEET) WELL HEALED FACE AND COUNTY TAG
 - 26" DOUGLAS-FIR BEARS FOUND AT RECORD N58 1/2"E 101.31 FEET WELL HEALED FACE AND BLM TAG (DID NOT MEASURE).
 - MARKHAM 1.5 FT TALL IRON PIPE FOUND AT RECORD, WITH ALUMINUM POST BESIDE.
 - 23" DOUGLAS-FIR BEARS S 27 1/2"W 24.0 FEET (RECORD BEARING TREE FOR MARKHAM PIPE) WELL HEALED FACE AND BLM TAG.
 DID NOT SEARCH FOR RECORD ROOT HOLES N3"W 51.48 FEET AND S63"W 60.72 FEET.
 CORNER LIES ON STEEP NORTH SLOPE, APPROXIMATELY 100 FEET EAST OF SIDE RIDGE RUNNING NORTHWEST. TOP OF CORNER MONUMENT IS 0.2 FEET ABOVE GROUND LEVEL. ALUMINUM U-POST 0.4 FEET SOUTH.



LEGEND	
○	SET 5/8" X 40" IRON ROD WITH 2 1/2" ALUMINUM CAP MARKED LONE ROCK TIMBER 85006 PLS AS NOTED
●	FOUND BLM BRASS CAP AS NOTED
●	FOUND DOUGLAS COUNTY SURVEYOR'S OFFICE BRASS CAP AS NOTED
●	FOUND UN-CAPPED 5/8" IRON ROD AS PER RUPPERT SURVEY M60-35 FILED IN THE DOUGLAS COUNTY SURVEYOR'S OFFICE
- - - - -	LINE SURVEYED BLAZED, PAINTED, RIBBONED, TAG AND POSTED
— — — — —	LINES SURVEYED
- - - - -	PROJECTED LINES NOT SURVEYED
{ }	GLO 1899 PLAT 553 FILED IN THE DOUGLAS COUNTY SURVEYOR'S OFFICE
()	BLM 1990 PLAT 6316 AND LINE NOTES PAGES 18514 - 18515 FILED IN THE DOUGLAS COUNTY SURVEYOR'S OFFICE.
< >	RUPPERT 1976 SURVEY M60-35 FILED IN THE DOUGLAS COUNTY SURVEYOR'S OFFICE

REGISTERED
 PROFESSIONAL
 LAND SURVEYOR
Daniel E. Saily
 OREGON
 NOVEMBER 10, 2020
 DANIEL E. SAILY
 85006
 EXPIRES: 6/30/2022



MAP FILE M180-11

MAP FILE M180-11