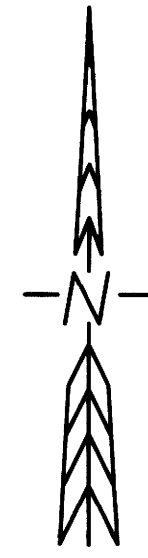


RECORD OF SURVEY

LOCATED IN THE SE 1/4 OF
SECTION 32, T.24S., R.1W., W.M.
DOUGLAS COUNTY, OREGON

FILED
Date: 3-8-2021 By: [Signature]
This Survey Consists of:
Map: M179-9
Narrative: _____
Corner Rpt.: _____
DOUGLAS COUNTY
SURVEYOR



B.T.S.
BASIS OF BEARINGS:
21-004 SENECA LDP

NARRATIVE:

THE PURPOSE OF THIS SURVEY IS TO MARK A PORTION OF THE BOUNDARY OF SENECA CO. PROPERTY LOCATED IN THE SOUTHEAST 1/4 OF SECTION 32, TOWNSHIP 24 SOUTH, RANGE 1 WEST, W.M., FOR TIMBER MANAGEMENT PURPOSES.

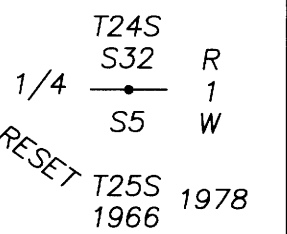
I ACCEPT THE MONUMENTS AS FOUND, UNLESS OTHERWISE NOTED THEN POST AND MARK THE BOUNDARY AS SHOWN WITH 5 1/2' STEEL POST PAINTED RED WITH RED FLAGGING, AND QUARTER BLAZE TREES WITHIN 3-5 FEET OF LINE, BLAZES PAINTED RED.

THIS SURVEY WAS PERFORMED IN THE FIELD FROM JANUARY 25, 2021 TO MARCH 1, 2021 BY RUSSELL BADGLEY, ISAAC JACOBSEN, AND ALLYN STONGE, WITH COMPUTATIONS AND DRAFTING BY ADAM DEGROOT AND RUSSELL BADGLEY.

CORNER DESCRIPTIONS:

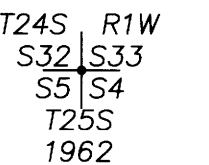
ALL NEW BEARING TREES HAVE DOUBLE BLAZED FACES WITH A BRASS WASHER STAMPED "BADGLEY PLS70716" NAILED INTO THE LOWER BLAZE. BEARINGS ARE TAKEN TO THE CENTER OF THE TREE AT THE ROOT CROWN AND DISTANCES ARE MEASURED TO A NAIL IN THE ROOT CROWN AT THE SIDE AND CENTER OF THE TREE WITH A TOTAL STATION. EXISTING BEARING TREES THAT WERE BURNED AND KILLED BY FIRE HAVE BEEN HIGH STUMPED AT ±4' ABOVE THE GROUND AND DISTANCES ARE MEASURED TO A NAIL DRIVEN INTO THE TOP CENTER OF THE STUMP. ALL BEARING TREES HAVE A 6" RED BAND PAINTED AROUND THE TREE AND THE BLAZED FACE PAINTED RED AND BEARING TREE SIGNS NAILED TO THE TREE.

- ①. 1/4 S32/S5(T25S) PLSS ID NO. 240100
A 1" IRON POST BY TRACY WITH THE DCSO IN 1966 PER CS FILE 52/30-57 AND RESET BY LANGLITZ IN 1978, FIRMLY SET AND PROJECTING 2" ABOVE THE GROUND, WITH A 2 1/2" BRASS CAP MARKED:



- FROM WHICH A BEARING TREE BY TRACY WITH THE DCSO IN 1966:
A SPLIT STUMP HEMLOCK BEARS (S46°E., 32.6')R3
AND BEARING TREES BY LANGLITZ WITH THE DCSO IN 1978:
A 51" SUGAR PINE STUMP WITH A 1/2" SQUARE IRON SPIKE IN THE TOP NEAR CENTER BEAR (S.86°30'W., 32.4')R3
AND BEARING TREES BY SAVELAND WITH THE BLM IN 2011:
A 10" D. FIR BEARS S.27°15'E., 33.6 FT W/VISIBLE SCRIBE (S.27°E., 33.7')R3
A 14" HEMLOCK BEARS N.85°00'W., 21.7 FT W/VISIBLE SCRIBE (N.85°15'W., 21.7 FT)R3
AND NEW BEARING TREES:
A 15" D. FIR BEARS S.72°45'E., 36.4 FT SCRIBED "1/4 S5 BT" ON DOUBLE BLAZE
A 15" HEMLOCK BEARS N.42°40'W., 15.6 FT SCRIBED "1/4 S32 BT" ON DOUBLE BLAZE

- ②. S32/S33/S4/S5(T25S) PLSS ID NO. 300100
FD. A 1" IRON POST BY GODFREY WITH THE DCSO IN 1962 PER CS FILE 52/42-33, FIRMLY SET AND PROJECTING 5" ABOVE THE GROUND, WITH A 2 1/2" BRASS CAP MARKED:



- FROM WHICH BEARING TREES BY GODFREY IN 1962:
A 19" D. FIR BEARS S.23°00'W., 22.7 FT W/HEALED BLAZE (S.24°W., 22.9')R6
A 19" D. FIR BEARS N.20°15'W., 14.4 FT W/HEALED BLAZE (N.20°W., 14.7')R6
A HEMLOCK SNAG (D.FIR)R6 BEARS N.48°30'E., 24.0 FT W/HEALED BLAZE (N.45°E., 23.2')R6
AND NEW BEARING TREES:
A 17" CEDAR BEARS N.69°45'W., 34.8 FT SCRIBED "T24S R1W S32 BT" ON DOUBLE BLAZE
A 20" D. FIR BEARS N.88°45'E., 14.1 FT SCRIBED "T24S R1W S33 BT" ON DOUBLE BLAZE

- ③. 1/4 S32/S33 PLSS ID NO. 300140
A 1" IRON POST BY GODFREY WITH THE DCSO IN 1961 PER CS FILE 52/42-5, FIRMLY SET AND PROJECTING 2" ABOVE THE GROUND, WITH A 2 1/2" BRASS CAP MARKED PER THE RECORD. ACCESSORIES PER M172-62 BY NYGREN IN 2016 IN GOOD CONDITION.

- ④. C1/4 S32 PLSS ID NO. 240140
A 5/8" IRON ROD BY NYGREN IN 2016 PER M172-62, FIRMLY SET AND PROJECTING 2" ABOVE THE GROUND, WITH A YELLOW PLASTIC CAP PER THE RECORD. ACCESSORIES IN GOOD CONDITION.

SURVEY CONTROL PROCEDURE:

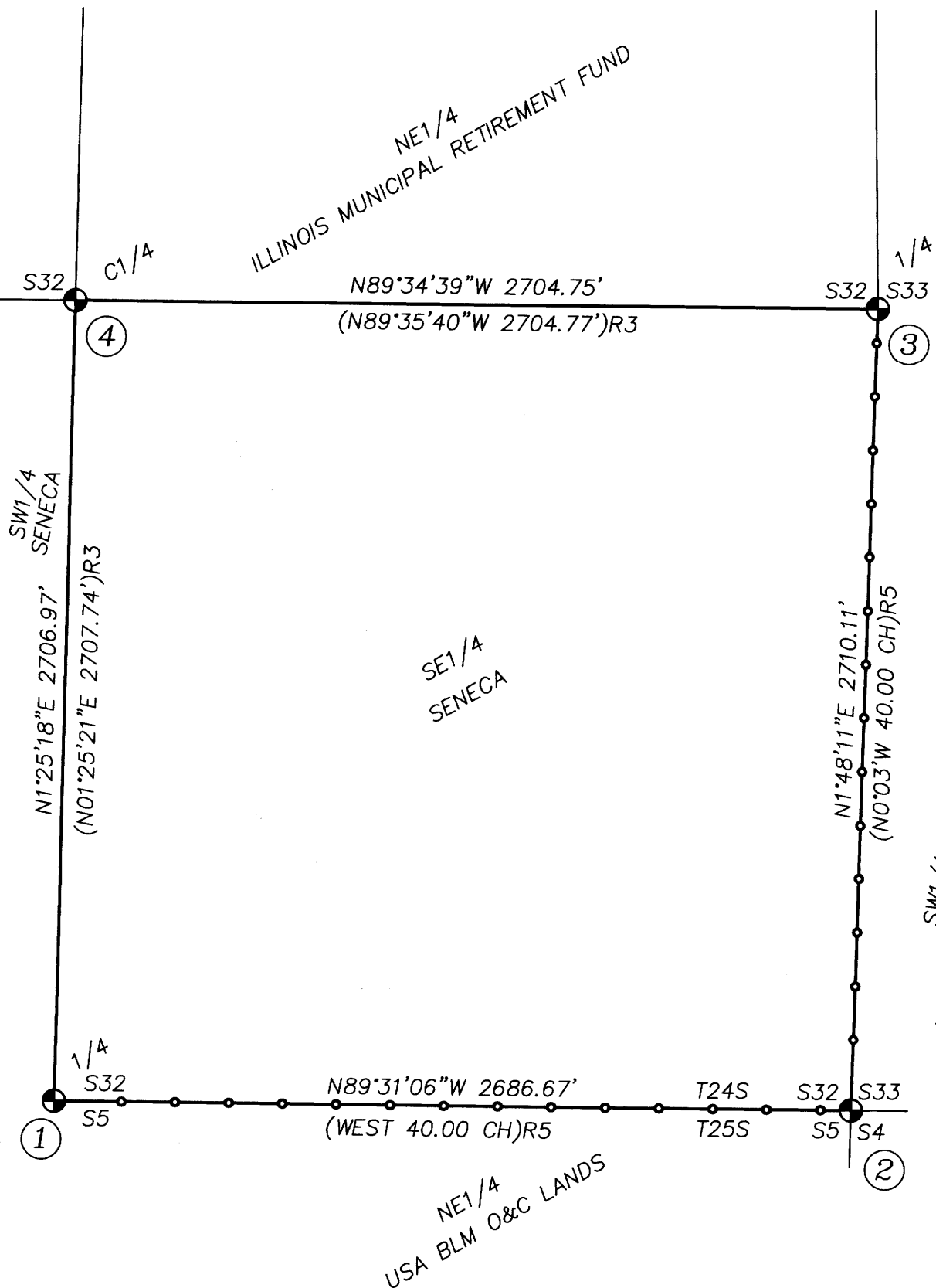
A STATIC GPS NETWORK SURVEY WAS PERFORMED UTILIZING LEICA GS15 GPS RECEIVERS, AND CONTROLLED BY THE OREGON REAL-TIME GEODETIC NETWORK (ORGN) SOLUTION ON PROJECT CONTROL POINTS. THE RESULTING GEODETIC COORDINATES WERE PROJECTED INTO THE BELOW DEFINED COORDINATE SYSTEM. POSTED LINES AND CONTROLLING CORNERS WERE TIED BY CONVENTIONAL TRAVERSE WITH A LEICA TCR1203 TOTAL STATION FROM THE STATIC OR RTK GPS CONTROL POINTS, AND ADJUSTED IN LEICA GEO OFFICE BY THE METHOD OF LEAST SQUARES.

COORDINATE SYSTEM NAME: 21-004 SENECA LDP
PROJECTION: TRANSVERSE MERCATOR
REFERENCE DATUM: NAD 83 (2011) (EPOCH 2010.00)
ELLIPSOID: GRS 1980
LATITUDE OF GRID ORIGIN: 43° 25' 00"N.
CENTRAL MERIDIAN: 122° 49' 30"W.
FALSE NORTHING: 50,000.00 IFT
FALSE EASTING: 150,000.00 IFT
CENTRAL MERIDIAN SCALE: 1.000174000

CORNER NO.	LATITUDE	LONGITUDE
1 - 240100	43°26'15.12543"N	122°49'50.40543"W
2 - 300100	43°26'14.90257"N	122°49'13.99970"W
3 - 300140	43°26'41.65076"N	122°49'12.84212"W
4 - 240140	43°26'41.84766"N	122°49'49.49763"W

RECORDS:

- R1 = BLM RETRACEMENT SURVEY, GROUP NO. 2500 - 2010
PLAT NO. 7689 - 2012
R2 = M32-62 ~ THOMAS SHRUM - 1966
R3 = M172-62 ~ GERALD NYGREN, BARNES & ASSOCIATES INC. - 2016
R4 = BLM DEPENDANT RESURVEY, GROUP NO. 1347 - 1986
PLAT NO. 6302 - 1990 (SECTION 4, T25S R1W)
R5 = ORIGINAL GLO SURVEY BY CARL NICKLIN, CONTRACT #664 - 1896
R6 = DCSO CORNER NOTES



LEGEND:

- = FOUND PLSS MONUMENT AS NOTED IN THE CORNER DESCRIPTIONS
- ()R# = DIMENSION PER RECORD REFERENCE NUMBER
- # = CORNER NOTE REFERENCE NUMBER
- = POSTED BOUNDARY LINE WITH 5 1/2' STEEL POSTS
- = MEASURED BOUNDARY LINE NOT POSTED



BTS SURVEYING, INC.
348 SE JACKSON ST., ROSEBURG, OR 97470
(541) 673-0966 adam@btssurveying.com

SCALE: 1" = 500'
DATE: MARCH 1, 2021

FOR: SENECA JONES TIMBER COMPANY
EAST FORK 32 SURVEY

JOB #: 21-004
FILE: 21-004_ROS.DWG
SHEET 1 OF 1

MAP FILE M179-9

MAP FILE M179-9